

V&V Reference Report

L2 ASCDS Version : 7.6.10

Observation 61407 - L2 Version 001
Chandra X-Ray Center

L2 Processing Date : Jan 12 2007

Contents

1	Front	2
2	OBI	3
2.1	OBI	3
2.1.1	Images	3
2.1.2	Bias	3
2.1.3	Parameters	4
2.1.4	Events	4
2.2	Compared Parameters	5
2.3	Star Slots	6
2.4	FID Slots	6
A	Summary	7
A.1	Status	7
A.2	Comments	7

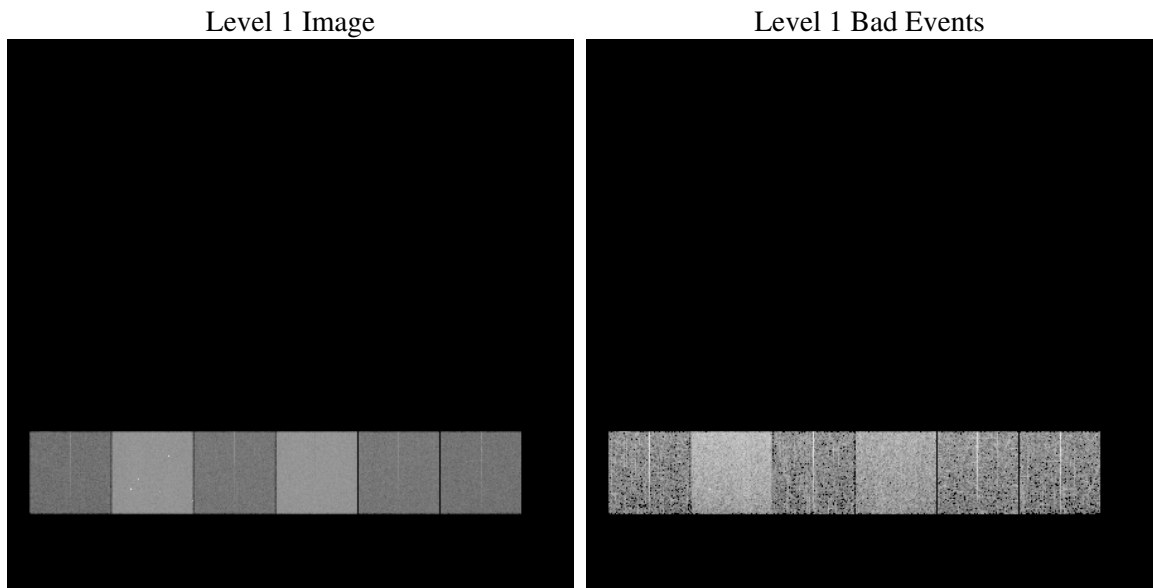
1 Front

seq_num	
obs_id	61407
title	ACIS-456789 diagnostics
observer	CHANDRA engineering request/realtime commanding
object	
dtcycle	0
cycle	P
ra_targ	0.0
dec_targ	0.0
ra_nom	332.02238128892
dec_nom	-21.019563459662
roll_nom	284.0840421087
revision	2
ontime	6060.4642901272
livetime	5983.7230421121
ontime4	2271.7450853288
ontime5	6497.9936551601
ontime6	2485.6535652131
ontime7	6060.4642901272
ontime8	2561.7787541002
ontime9	2399.5217239112
l2events	1210969

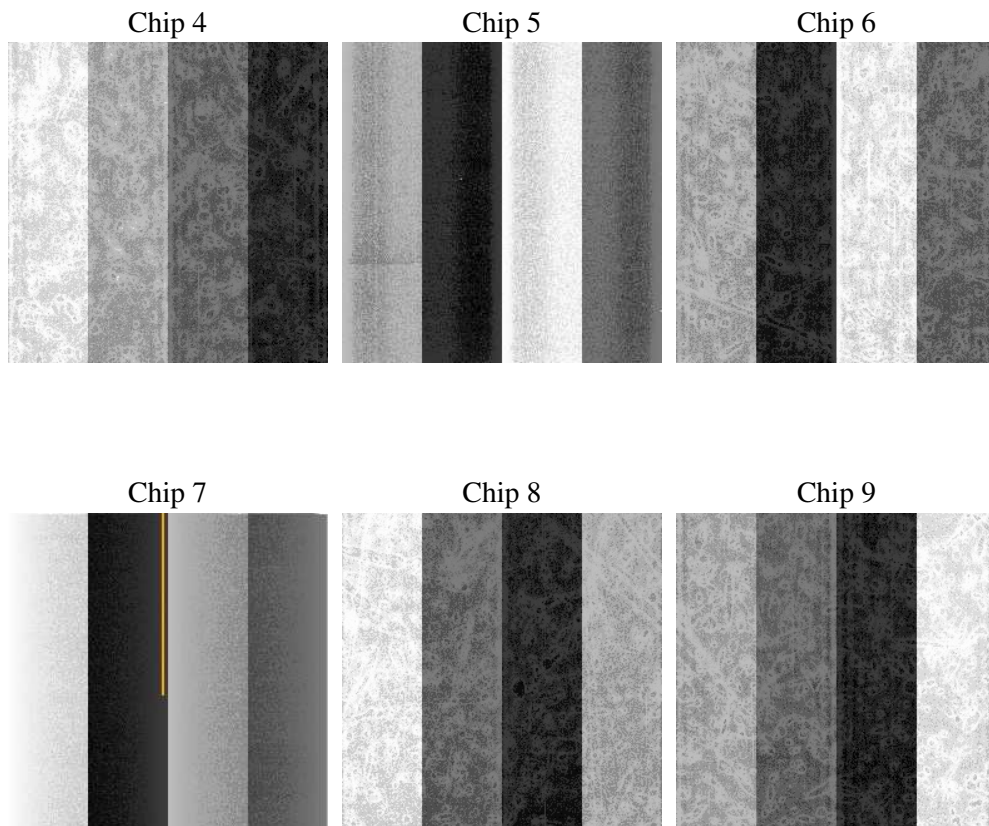
2 OBI

2.1 OBI

2.1.1 Images



2.1.2 Bias



2.1.3 Parameters

obi_num	1
ascdsver	7.6.10
caldsver	3.3.0
date	2007-01-12T13:01:50
revision	2

sched_exp_time	0.0
ontime	6060.4642901272
ontime4	2271.7450853288
ontime5	6497.9936551601
ontime6	2485.6535652131
ontime7	6060.4642901272
ontime8	2561.7787541002
ontime9	2399.5217239112
l1events	1422353

2.1.4 Events

	ccd 4	ccd 5	ccd 6	ccd 7	ccd 8	ccd 9
level 1 events	144389	385596	169337	392169	174545	156317
rejected events	19245	45226	19898	32490	21014	19174
rejected %	13%	11%	11%	8%	12%	12%

	ccd 4	ccd 5	ccd 6	ccd 7	ccd 8	ccd 9
grade 0 events	70676	87604	81934	92084	84804	75504
	48%	22%	48%	23%	48%	48%
grade 1 events	382	322	434	230	415	400
	0%	0%	0%	0%	0%	0%
grade 2 events	22277	117362	25805	80023	26758	24146
	15%	30%	15%	20%	15%	15%
grade 3 events	7719	22767	9296	36676	9848	8495
	5%	5%	5%	9%	5%	5%
grade 4 events	7725	22577	9245	36042	9873	8563
	5%	5%	5%	9%	5%	5%
grade 5 events	1250	8563	1491	6775	1606	1455
	0%	2%	0%	1%	0%	0%
grade 6 events	16923	90245	23343	115028	22428	20610
	11%	23%	13%	29%	12%	13%
grade 7 events	17437	36156	17789	25311	18813	17144
	12%	9%	10%	6%	10%	10%

2.2 Compared Parameters

Parameter	Planned	Actual	Parameter	Planned	Actual
Instrument	ACIS	ACIS	Obspar format version number	6	6
Detector	ACIS-456789	ACIS-456789	Obspar file type	PREDICTED	ACTUAL
Grating	NONE	NONE	Obspar update status	NONE	UPDATED
Data mode	FAINT	FAINT	On-chip summing requested	N	N
Observation mode	SECONDARY	SECONDARY	Subarray requested	NONE	NONE
Pointing RA	0	332.0223812889217	Alternating exposures requested	N	N
Pointing Dec	0	-21.01956345966154	Primary exposure time	3.2	3.2
Pointing Roll	0.0	284.0840421087033			
SIM focus pos (mm)	-0.684267	-0.6828225247311905			
SIM defocus (mm)	0	0.8505141146731063			
SIM translation stage pos (mm)	-190.132523	250.466033080201			
SIM translation stage offset (mm)	0	-0.01005468664627074			
Observation start time	122447848.391358	122447847.62286			
Observation start date	2001-11-18T05:17:28	2001-11-18T05:17:27			
Observation end time	122475014.992449	122475014.22395			
Observation end date	2001-11-18T12:50:15	2001-11-18T12:50:14			
Read mode	TIMED	TIMED			

2.3 Star Slots

2.4 FID Slots

A Summary

A.1 Status

V&V Scientist	Beth Sundheim
V&V Date (YYYY-MM-DD)	2007.01.12
V&V Edition	1
V&V Disposition and Status	OK
V&V Charge Time	6.06046429

A.2 Comments