

V&V Reference Report

L2 ASCDS Version : 8.4.5

Observation 61297 - L2 Version 3
Chandra X-Ray Center

L2 Processing Date : Oct 3 2012

Contents

1	Front	2
2	OBI	3
2.1	OBI	3
2.1.1	Images	3
2.1.2	Bias	3
2.1.3	Parameters	4
2.1.4	Events	4
2.2	Compared Parameters	5
2.3	Star Slots	6
2.4	FID Slots	6
A	Summary	7
A.1	Status	7
A.2	Comments	7

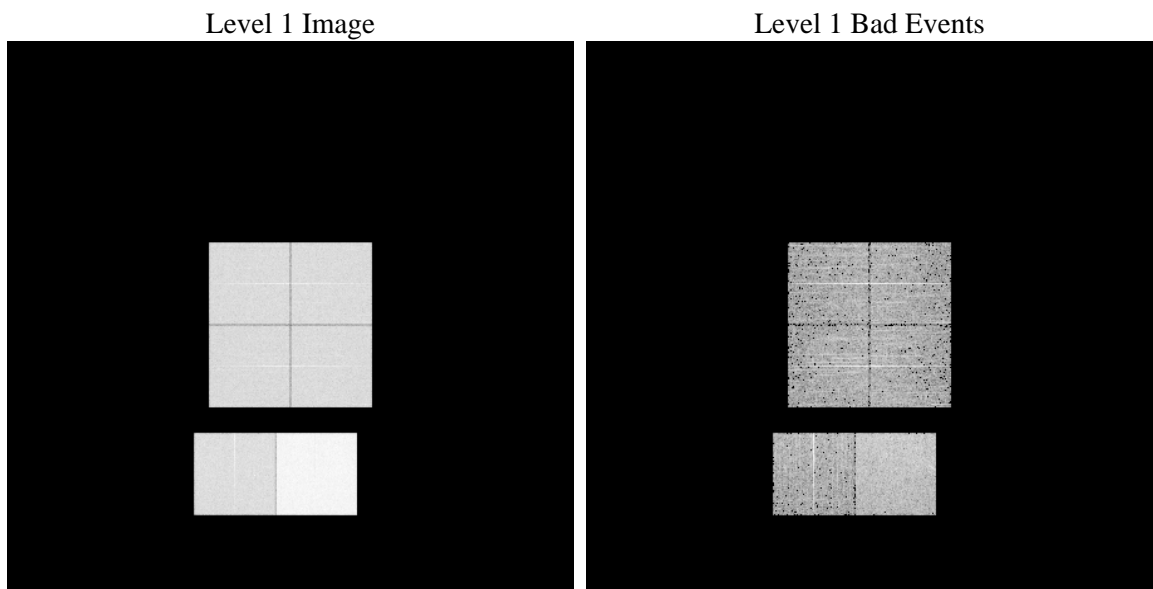
1 Front

seq_num	 	Sequence number
obs_id	61297	Observation id
title	ACIS-012367 diagnostics	Proposal title
observer	CHANDRA engineering request/realtime commanding	Principal investig
object	 	Source name
dtcycle	0	
cycle	P	events from which exps? Prim/Second/Both
ra_targ	0.0	Observer's specified target RA [deg]
dec_targ	0.0	Observer's specified target Dec [deg]
ra_nom	330.03028197899	Nominal RA [deg]
dec_nom	45.018939496144	Nominal Dec [deg]
roll_nom	8.6391834968569	Nominal Roll [deg]
revision	3	Processing version of data
ontime	7792.000007242	Sum of GTIs [s]
livetime	7693.3330113711	Livetime [s]
ontime0	3132.9216414243	Sum of GTIs [s]
ontime1	3170.3792019039	Sum of GTIs [s]
ontime2	2988.8823083192	Sum of GTIs [s]
ontime3	3061.5374192297	Sum of GTIs [s]
ontime6	3290.2967542559	Sum of GTIs [s]
ontime7	7792.000007242	Sum of GTIs [s]
l2events	1226402	Number of level 2 events

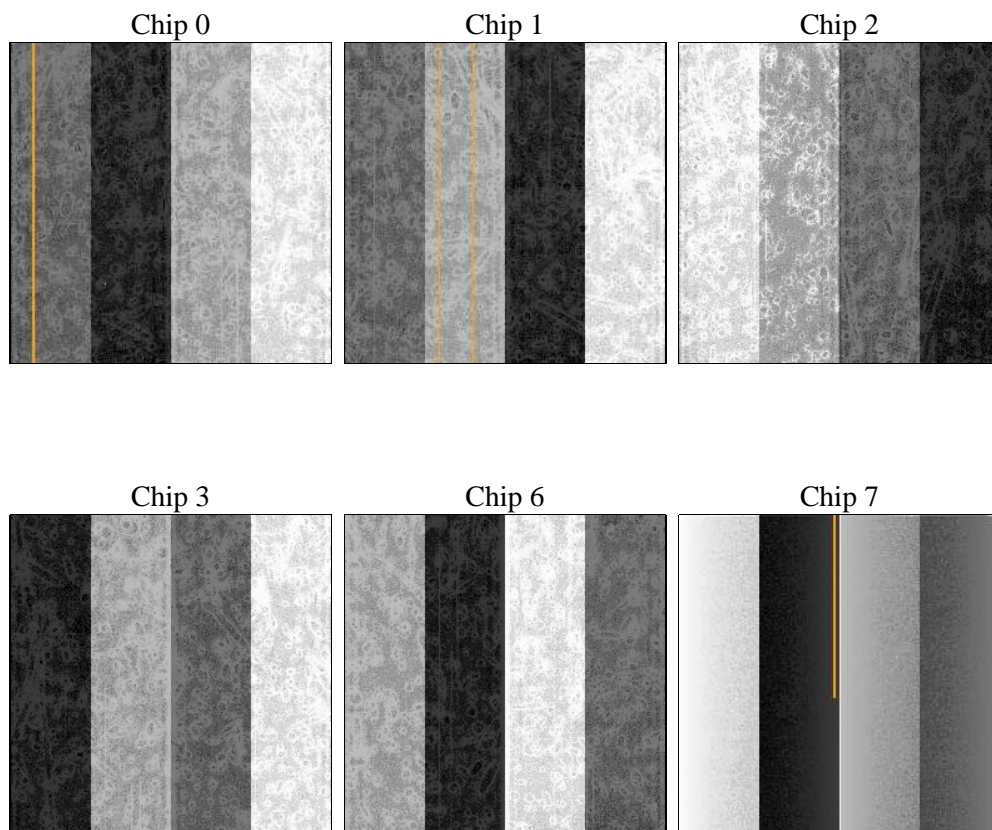
2 OBI

2.1 OBI

2.1.1 Images



2.1.2 Bias



2.1.3 Parameters

obi_num	0	Obi number	sched_exp_time	0.0	[s] Scheduled observation exposure time
ascdsver	8.4.5	Processing system revision	ontime	7792.000007242	Sum of GTIs [s]
caldsver	4.5.2	 	ontime0	3132.9216414243	Sum of GTIs [s]
date	2012-10-03T03:07:27	Date and time of file creation	ontime1	3170.3792019039	Sum of GTIs [s]
revision	3	Processing version of data	ontime2	2988.8823083192	Sum of GTIs [s]
			ontime3	3061.5374192297	Sum of GTIs [s]
			ontime6	3290.2967542559	Sum of GTIs [s]
			ontime7	7792.000007242	Sum of GTIs [s]
			l1events	1443211	Number of level 1 events

2.1.4 Events

	ccd 0	ccd 1	ccd 2	ccd 3	ccd 6	ccd 7		ccd 0	ccd 1	ccd 2	ccd 3	ccd 6	ccd 7
level 1 events	189810	192318	184749	189271	209976	477087	grade 0 events	91414	93035	89213	92005	100489	109663
rejected events	23281	23612	24502	24608	26046	43297		48%	48%	48%	48%	47%	22%
rejected %	12%	12%	13%	13%	12%	9%	grade 1 events	498	480	435	483	445	293
								0%	0%	0%	0%	0%	0%
							grade 2 events	29726	29864	28192	28856	31655	96123
								15%	15%	15%	15%	15%	20%
							grade 3 events	10485	10591	10038	10315	11046	43762
								5%	5%	5%	5%	5%	9%
							grade 4 events	10594	10616	10025	10391	11343	43528
								5%	5%	5%	5%	5%	9%
							grade 5 events	1600	1642	1567	1687	1972	8807
								0%	0%	0%	0%	0%	1%
							grade 6 events	24310	24600	22779	23096	29397	140714
								12%	12%	12%	12%	14%	29%
							grade 7 events	21183	21490	22500	22438	23629	34197
								11%	11%	12%	11%	11%	7%

2.2 Compared Parameters

Parameter	Planned	Actual	Parameter	Planned	Actual
Instrument	ACIS	ACIS	Obspar format version number	7	7
Detector	ACIS-012367	ACIS-012367	Obspar file type	PREDICTED	ACTUAL
Grating	NONE	NONE	Obspar update status	NONE	UPDATED
Data mode	FAINT	FAINT	On-chip summing requested	N	N
Observation mode	SECONDARY	SECONDARY	Subarray requested	NONE	NONE
[deg] Pointing RA	0	330.0302819789868	Alternating exposures requested	N	N
[deg] Pointing Dec	0	45.01893949614363	[s] Primary exposure time	0.000000	3.2
[deg] Pointing Roll	0.0	8.6391834968569			
[mm] SIM focus pos	-0.782348	-1.038866356238299			
[mm] SIM defocus	0	0.4944702831659975			
[mm] SIM translation stage pos	-233.592463	250.466033080201			
[mm] SIM translation stage offset	0	-0.01005468664627074			
[s] Observation start time (MET)	130906566.931	130906566.16274			
Observation start date	2002-02-24T02:56:07	2002-02-24T02:56:06			
[s] Observation end time (MET)	130918305.232	130918304.46322			
Observation end date	2002-02-24T06:11:45	2002-02-24T06:11:44			
Read mode	TIMED	TIMED			

2.3 Star Slots

2.4 FID Slots

A Summary

A.1 Status

V&V Scientist	Beth Sundheim
V&V Date (YYYY-MM-DD)	2012.10.04
V&V Edition	1
V&V Disposition and Status	OK
V&V Charge Time	7.792000007242

A.2 Comments