

V&V Reference Report

L2 ASCDS Version : 7.6.8.1

Observation 61227 - L2 Version 001
Chandra X-Ray Center

L2 Processing Date : Sep 11 2006

Contents

1	Front	2
2	OBI	3
2.1	OBI	3
2.1.1	Images	3
2.1.2	Bias	3
2.1.3	Parameters	4
2.1.4	Events	4
2.2	Compared Parameters	5
2.3	Aspect	6
2.4	Star Slots	8
2.5	FID Slots	8
A	Summary	9
A.1	Status	9
A.2	Comments	9

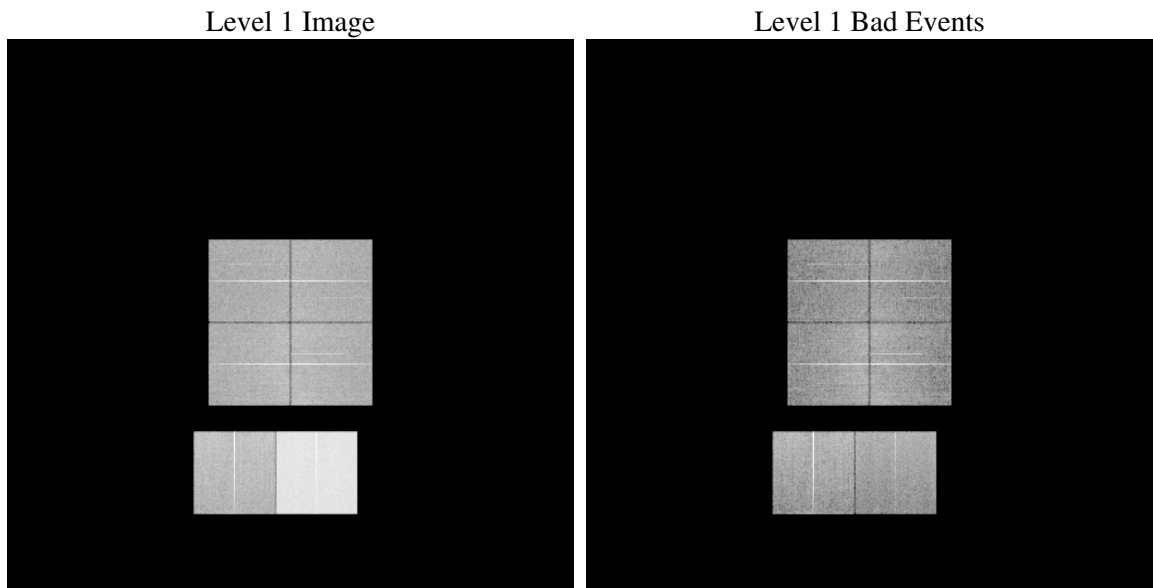
1 Front

seq_num	
obs_id	61227
title	ACIS-012367 diagnostics
observer	CHANDRA engineering request/realtime commanding
object	
dtcycle	0
cycle	P
ra_targ	0.0
dec_targ	0.0
ra_nom	285.97935529599
dec_nom	-37.976458736903
roll_nom	91.844217251756
revision	2
ontime	8434.4425377846
livetime	8327.6405477596
ontime0	1858.520775646
ontime1	1926.6236853898
ontime2	1865.0850552917
ontime3	1936.2237152755
ontime6	2224.8813947439
ontime7	8434.4425377846
l2events	914757

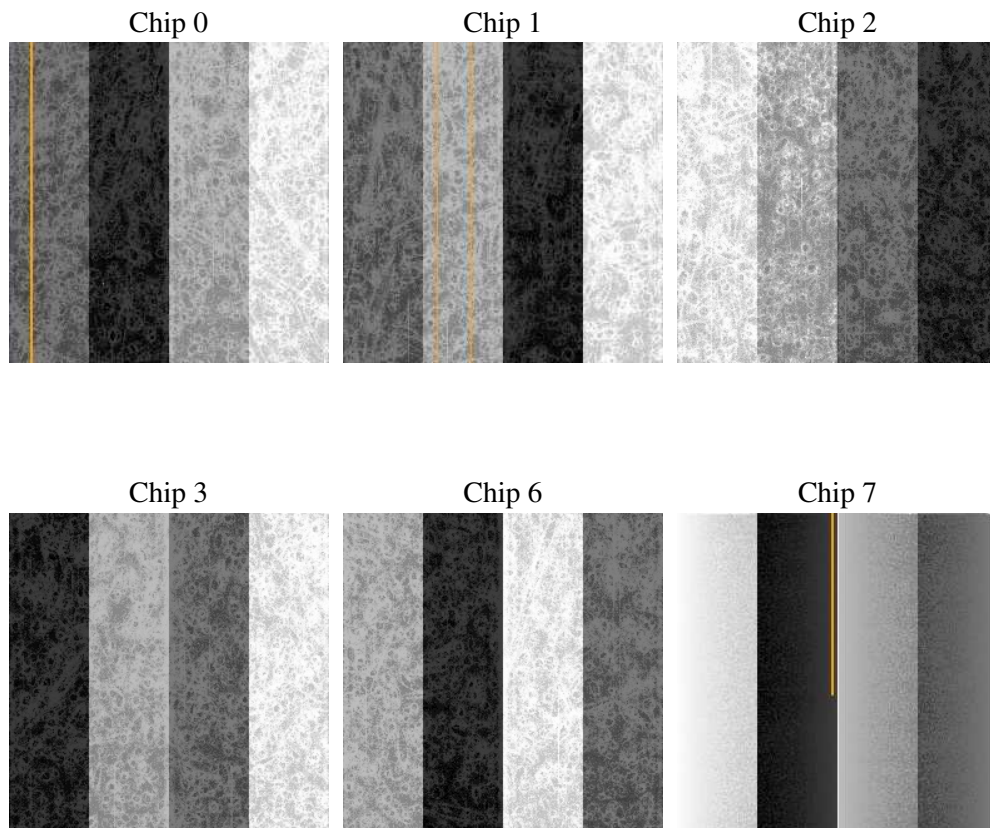
2 OBI

2.1 OBI

2.1.1 Images



2.1.2 Bias



2.1.3 Parameters

obi_num	2
ascdsver	7.6.8.1
caldbver	3.2.3
date	2006-09-11T12:33:28
revision	2

sched_exp_time	0.0
ontime	8436.3177231252
ontime0	1860.3549209833
ontime1	1928.4167907238
ontime2	1866.8371206224
ontime3	1938.1399406195
ontime6	2226.5924201012
ontime7	8436.3177231252
l1events	1565105

2.1.4 Events

	ccd 0	ccd 1	ccd 2	ccd 3	ccd 6	ccd 7
level 1 events	158343	166660	181284	185983	229106	643729
rejected events	81696	85933	103821	104993	130799	105775
rejected %	51%	51%	57%	56%	57%	16%

	ccd 0	ccd 1	ccd 2	ccd 3	ccd 6	ccd 7
grade 0 events	40801	42886	41210	43449	51270	87666
	25%	25%	22%	23%	22%	13%
grade 1 events	1237	1206	1248	1381	1543	702
	0%	0%	0%	0%	0%	0%
grade 2 events	13619	14197	14025	14364	17240	165316
	8%	8%	7%	7%	7%	25%
grade 3 events	5242	5544	5015	5480	6463	38809
	3%	3%	2%	2%	2%	6%
grade 4 events	5131	5372	5196	5453	6525	37830
	3%	3%	2%	2%	2%	5%
grade 5 events	1830	1928	1934	2029	2274	12820
	1%	1%	1%	1%	0%	1%
grade 6 events	11998	12864	12173	12426	16978	208500
	7%	7%	6%	6%	7%	32%
grade 7 events	78485	82663	100483	101401	126813	92086
	49%	49%	55%	54%	55%	14%

2.2 Compared Parameters

Parameter	Planned	Actual	Parameter	Planned	Actual
Instrument	ACIS	ACIS	Obspar format version number	6	6
Detector	ACIS-012367	ACIS-012367	Obspar file type	PREDICTED	ACTUAL
Grating	NONE	NONE	Obspar update status	NONE	UPDATED
Data mode	FAINT	FAINT	On-chip summing requested	N	N
Observation mode	SECONDARY	SECONDARY	Subarray requested	NONE	NONE
Pointing RA	0	285.9793552959864	Alternating exposures requested	N	N
Pointing Dec	0	-37.97645873690254	Primary exposure time	0.000000	3.2
Pointing Roll	0.0	91.84421725175636			
SIM focus pos (mm)	-0.782348	-0.7809083437167272			
SIM defocus (mm)	0	0.7524282956875696			
SIM translation stage pos (mm)	-233.592463	250.466033080201			
SIM translation stage offset (mm)	0	-0.01005468664627074			
Observation start time	135712037.982	135712036.95755			
Observation start date	2002-04-20T17:47:18	2002-04-20T17:47:16			
Observation end time	135751951.484	135751950.45917			
Observation end date	2002-04-21T04:52:31	2002-04-21T04:52:30			
Read mode	TIMED	TIMED			

2.3 Aspect

2.4 Star Slots

2.5 FID Slots

A Summary

A.1 Status

V&V Scientist	Jen Lauer
V&V Date (YYYY-MM-DD)	2006.09.11
V&V Edition	1
V&V Disposition and Status	OK
V&V Charge Time	8.43444253

A.2 Comments