

# V&V Reference Report

## L2 ASCDS Version : 7.6.9

Observation 60927 - L2 Version 001  
Chandra X-Ray Center

L2 Processing Date : Oct 15 2006

## Contents

<b>1</b>	<b>Front</b>	<b>2</b>
<b>2</b>	<b>OBI</b>	<b>3</b>
2.1	OBI . . . . .	3
2.1.1	Images . . . . .	3
2.1.2	Bias . . . . .	3
2.1.3	Parameters . . . . .	4
2.1.4	Events . . . . .	4
2.2	Compared Parameters . . . . .	5
2.3	Aspect . . . . .	6
2.4	Star Slots . . . . .	8
2.5	FID Slots . . . . .	8
<b>A</b>	<b>Summary</b>	<b>9</b>
A.1	Status . . . . .	9
A.2	Comments . . . . .	9

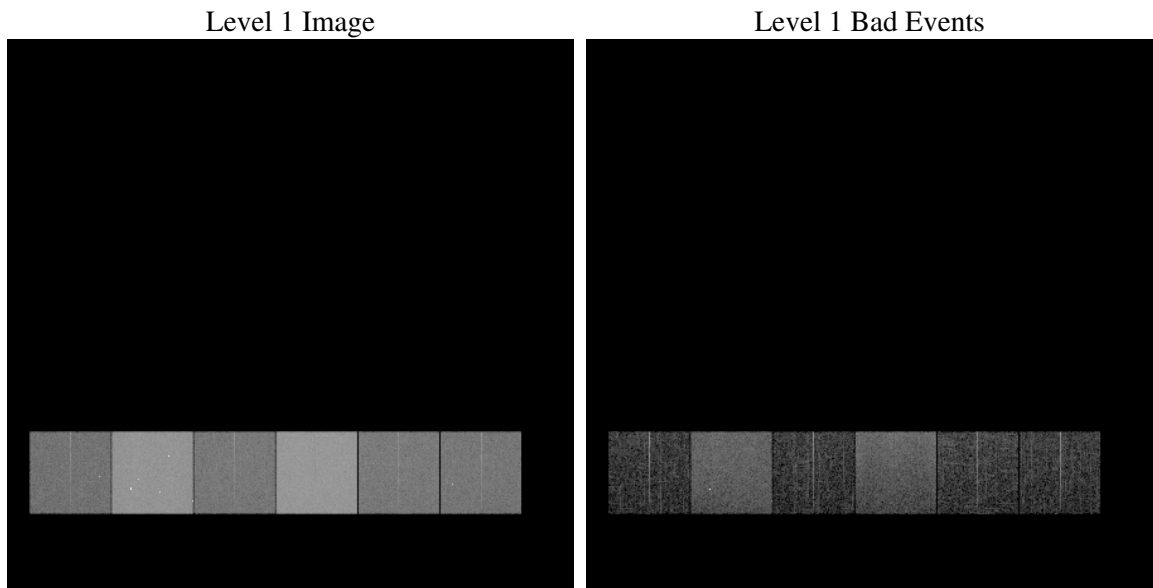
# 1 Front

seq_num	&#160
obs_id	60927
title	ACIS-456789 diagnostics
observer	CHANDRA engineering request/realtime commanding
object	&#160
dtcycle	0
cycle	P
ra_targ	0.0
dec_targ	0.0
ra_nom	125.99826725459
dec_nom	-3.1714739883153
roll_nom	60.59660905876
revision	3
ontime	8441.5999685526
livetime	8334.7073468295
ontime4	3129.6273442209
ontime5	8441.5999685526
ontime6	3429.4338823259
ontime7	8441.5999685526
ontime8	3547.7183249295
ontime9	3388.9093574286
l2events	1258118

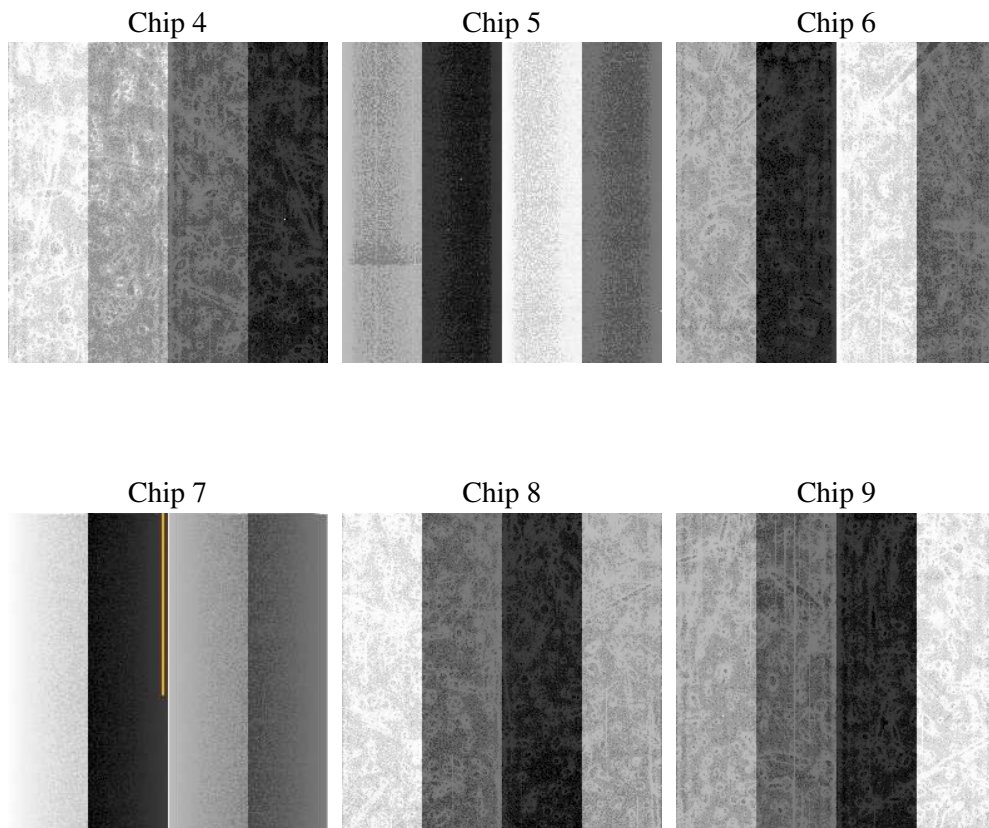
## 2 OBI

### 2.1 OBI

#### 2.1.1 Images



#### 2.1.2 Bias



### 2.1.3 Parameters

obi_num	0
ascdsver	7.6.9
caldbver	3.2.3
date	2006-10-15T07:30:09
revision	3

sched_exp_time	0.0
ontime	8462.2591428757
ontime4	3137.3225378394
ontime5	8462.2591428757
ontime6	3441.9787233472
ontime7	8462.2591428757
ontime8	3558.6545585394
ontime9	3399.8455412388
l1events	1546434

### 2.1.4 Events

	ccd 4	ccd 5	ccd 6	ccd 7	ccd 8	ccd 9
level 1 events	157656	402802	183572	434843	191972	175589
rejected events	23907	67051	24737	58957	28015	25141
rejected %	15%	16%	13%	13%	14%	14%

	ccd 4	ccd 5	ccd 6	ccd 7	ccd 8	ccd 9
grade 0 events	77872	41636	86703	68690	90819	83643
	49%	10%	47%	15%	47%	47%
grade 1 events	571	124	447	161	445	464
	0%	0%	0%	0%	0%	0%
grade 2 events	21332	160066	27425	113621	28675	25774
	13%	39%	14%	26%	14%	14%
grade 3 events	8941	11059	9798	28105	10591	9452
	5%	2%	5%	6%	5%	5%
grade 4 events	8950	10725	9868	27787	10377	9717
	5%	2%	5%	6%	5%	5%
grade 5 events	1528	7525	1720	7680	2099	1809
	0%	1%	0%	1%	1%	1%
grade 6 events	17055	113002	25623	138521	24063	22306
	10%	28%	13%	31%	12%	12%
grade 7 events	21407	58665	21988	50278	24903	22424
	13%	14%	11%	11%	12%	12%

## 2.2 Compared Parameters

Parameter	Planned	Actual	Parameter	Planned	Actual
Instrument	ACIS	ACIS	Obspar format version number	6	6
Detector	ACIS-456789	ACIS-456789	Obspar file type	PREDICTED	ACTUAL
Grating	NONE	NONE	Obspar update status	NONE	UPDATED
Data mode	FAINT	FAINT	On-chip summing requested	N	N
Observation mode	SECONDARY	SECONDARY	Subarray requested	NONE	NONE
Pointing RA	0	125.9982672545914	Alternating exposures requested	N	N
Pointing Dec	0	-3.17147398831529	Primary exposure time	0.000000	3.2
Pointing Roll	0.0	60.59660905875998			
SIM focus pos (mm)	-0.684267	-0.7809083437167272			
SIM defocus (mm)	0	0.7524282956875696			
SIM translation stage pos (mm)	-190.132523	250.466033080201			
SIM translation stage offset (mm)	0	-0.01005468664627074			
Observation start time	155608918.551935	155608917.52722			
Observation start date	2002-12-07T00:41:59	2002-12-07T00:41:57			
Observation end time	155632702.652928	155632701.62821			
Observation end date	2002-12-07T07:18:23	2002-12-07T07:18:21			
Read mode	TIMED	TIMED			

## 2.3 Aspect



## **2.4 Star Slots**

## **2.5 FID Slots**



## A Summary

### A.1 Status

V&V Scientist	Beth Sundheim
V&V Date (YYYY-MM-DD)	2006.10.15
V&V Edition	1
V&V Disposition and Status	OK
V&V Charge Time	8.44159996

### A.2 Comments