

V&V Reference Report

L2 ASCDS Version : 7.6.7.2

Observation 60337 - L2 Version 001
Chandra X-Ray Center

L2 Processing Date : May 29 2006

Contents

1	Front	2
2	OBI	3
2.1	OBI	3
2.1.1	Images	3
2.1.2	Bias	3
2.1.3	Parameters	4
2.1.4	Events	4
2.2	Compared Parameters	5
2.3	Aspect	6
2.4	Star Slots	8
2.5	FID Slots	8
A	Summary	9
A.1	Status	9
A.2	Comments	9

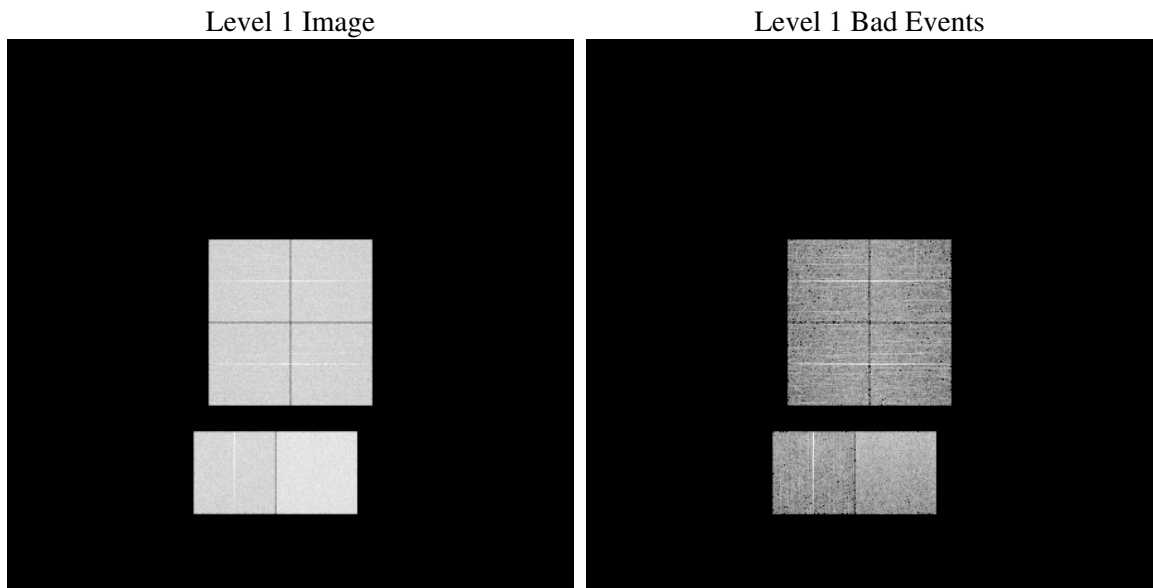
1 Front

seq_num	
obs_id	60337
title	ACIS-012367 diagnostics
observer	CHANDRA engineering request/realtime commanding
object	
dtcycle	0
cycle	P
ra_targ	0.0
dec_targ	0.0
ra_nom	180.97095804138
dec_nom	20.990972736873
roll_nom	165.56341181177
revision	2
ontime	7801.5999709368
livetime	7702.8114145452
ontime0	5351.4272648692
ontime1	5517.6983273327
ontime2	5156.9693271816
ontime3	5270.4029574692
ontime6	5600.9823234975
ontime7	7801.5999709368
l2events	1118754

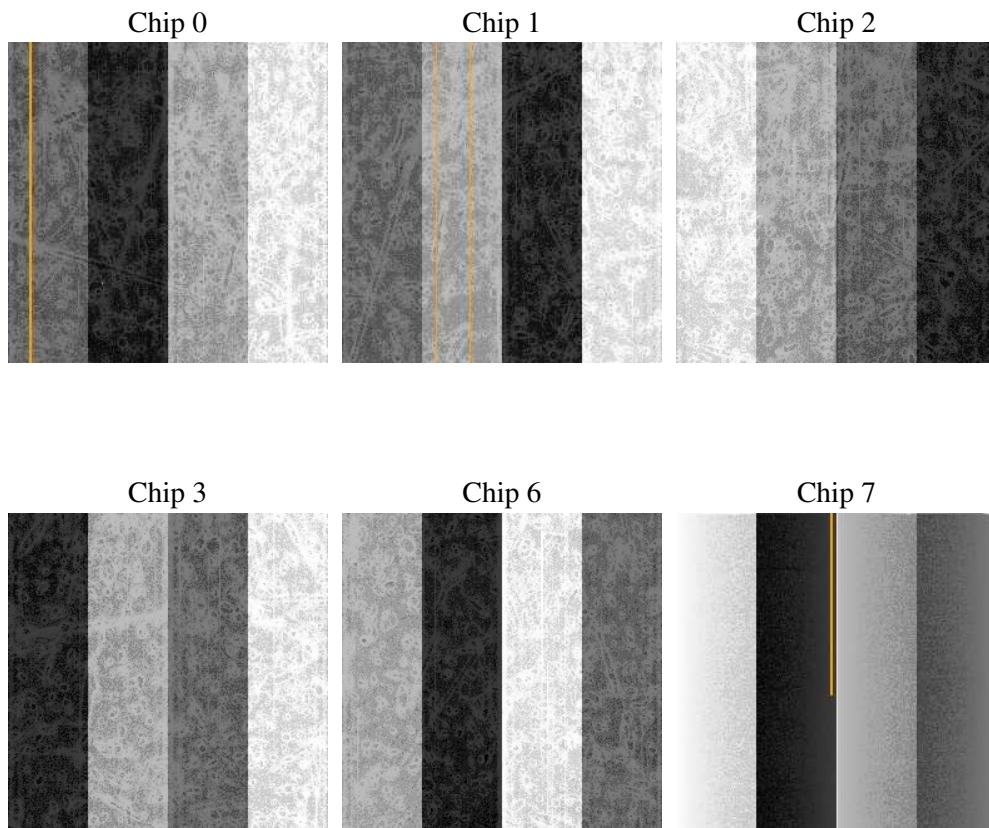
2 OBI

2.1 OBI

2.1.1 Images



2.1.2 Bias



2.1.3 Parameters

obi_num	0
ascdsver	7.6.7.2
caldbver	3.2.2
date	2006-05-29T21:06:44
revision	2

sched_exp_time	0.0
ontime	7804.3326822519
ontime0	5354.1599761844
ontime1	5519.4498771429
ontime2	5159.7020384967
ontime3	5273.1356687844
ontime6	5603.7150348127
ontime7	7804.3326822519
l1events	1418192

2.1.4 Events

	ccd 0	ccd 1	ccd 2	ccd 3	ccd 6	ccd 7
level 1 events	214342	219964	209390	216231	234570	323695
rejected events	36916	37554	37262	38951	39966	54751
rejected %	17%	17%	17%	18%	17%	16%

	ccd 0	ccd 1	ccd 2	ccd 3	ccd 6	ccd 7
grade 0 events	97153	99780	96357	99172	104993	48056
	45%	45%	46%	45%	44%	14%
grade 1 events	518	507	574	593	561	125
	0%	0%	0%	0%	0%	0%
grade 2 events	31130	32096	29218	30366	33583	81164
	14%	14%	13%	14%	14%	25%
grade 3 events	11509	11546	11141	11581	11927	19531
	5%	5%	5%	5%	5%	6%
grade 4 events	11556	11653	11165	11454	12152	19596
	5%	5%	5%	5%	5%	6%
grade 5 events	2490	2424	2319	2494	2645	6821
	1%	1%	1%	1%	1%	2%
grade 6 events	26170	27457	24342	24821	32042	100699
	12%	12%	11%	11%	13%	31%
grade 7 events	33816	34501	34274	35750	36667	47703
	15%	15%	16%	16%	15%	14%

2.2 Compared Parameters

Parameter	Planned	Actual	Parameter	Planned	Actual
Instrument	ACIS	ACIS	Obspar format version number	6	6
Detector	ACIS-012367	ACIS-012367	Obspar file type	PREDICTED	ACTUAL
Grating	NONE	NONE	Obspar update status	NONE	UPDATED
Data mode	FAINT	FAINT	On-chip summing requested	N	N
Observation mode	SECONDARY	SECONDARY	Subarray requested	NONE	NONE
Pointing RA	0	180.9709580413806	Alternating exposures requested	N	N
Pointing Dec	0	20.99097273687253	Primary exposure time	0.000000	3.2
Pointing Roll	0.0	165.5634118117697			
SIM focus pos (mm)	-0.782348	-1.038866356238299			
SIM defocus (mm)	0	0.4944702831659975			
SIM translation stage pos (mm)	-233.592463	250.466033080201			
SIM translation stage offset (mm)	0	-0.01005468664627074			
Observation start time	195786472.568843	195786471.54384			
Observation start date	2004-03-16T01:07:53	2004-03-16T01:07:51			
Observation end time	195801007.069481	195801006.04447			
Observation end date	2004-03-16T05:10:07	2004-03-16T05:10:06			
Read mode	TIMED	TIMED			

2.3 Aspect

2.4 Star Slots

2.5 FID Slots

A Summary

A.1 Status

V&V Scientist	Beth Sundheim
V&V Date (YYYY-MM-DD)	2006.05.30
V&V Edition	1
V&V Disposition and Status	OK
V&V Charge Time	7.80159997

A.2 Comments