

V&V Reference Report

L2 ASCDS Version : 7.6.7.2

Observation 60257 - L2 Version 001
Chandra X-Ray Center

L2 Processing Date : May 20 2006

Contents

1	Front	2
2	OBI	3
2.1	OBI	3
2.1.1	Images	3
2.1.2	Bias	3
2.1.3	Parameters	4
2.1.4	Events	4
2.2	Compared Parameters	5
2.3	Aspect	6
2.4	Star Slots	8
2.5	FID Slots	8
A	Summary	9
A.1	Status	9
A.2	Comments	9

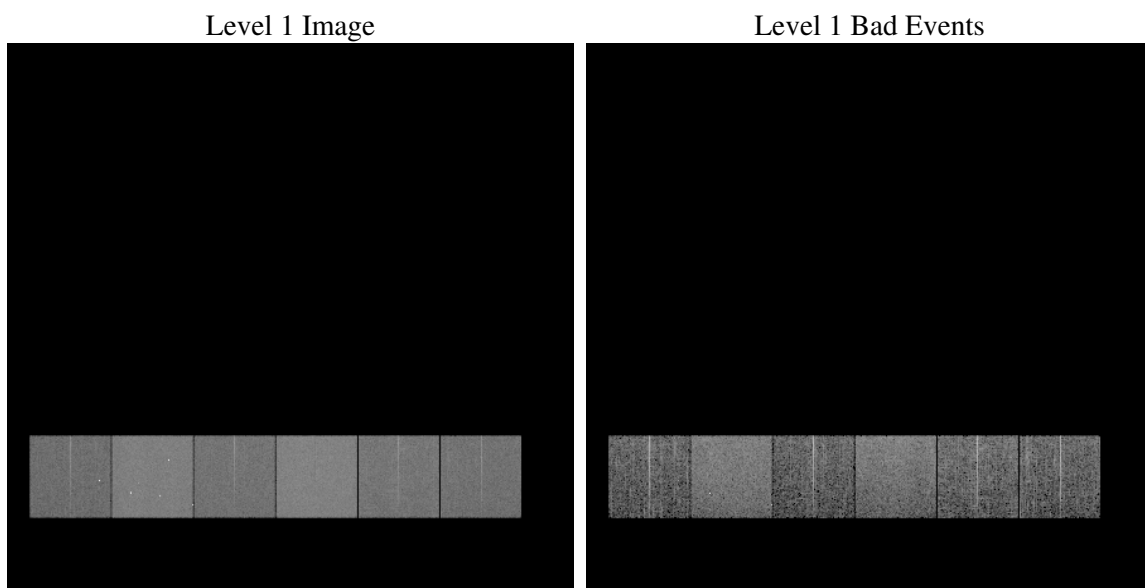
1 Front

seq_num	
obs_id	60257
title	ACIS-456789 diagnostics
observer	CHANDRA engineering request/realtime commanding
object	
dtcycle	0
cycle	P
ra_targ	0.0
dec_targ	0.0
ra_nom	261.97464094782
dec_nom	9.0138215333391
roll_nom	118.09817448982
revision	2
ontime	6639.9999752641
livetime	6555.9202974493
ontime4	4070.6631452739
ontime5	6639.9999752641
ontime6	4498.4311376512
ontime7	6639.9999752641
ontime8	4628.1520384252
ontime9	4345.9816772938
l2events	921707

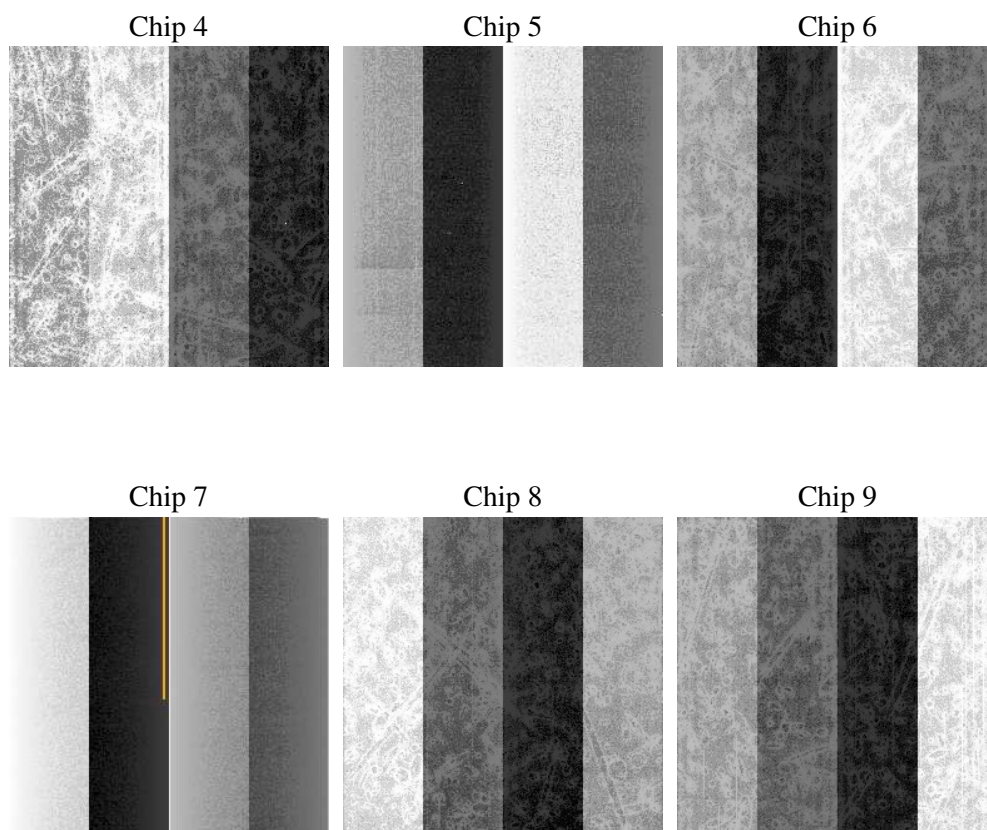
2 OBI

2.1 OBI

2.1.1 Images



2.1.2 Bias



2.1.3 Parameters

obi_num	0
ascdsver	7.6.7.2
caldbver	3.2.2
date	2006-05-20T16:56:06
revision	2

sched_exp_time	0.0
ontime	6640.8126426339
ontime4	4070.7225719094
ontime5	6640.8126426339
ontime6	4498.53160429
ontime7	6640.8126426339
ontime8	4628.1704250872
ontime9	4346.2052639425
l1events	1207395

2.1.4 Events

	ccd 4	ccd 5	ccd 6	ccd 7	ccd 8	ccd 9
level 1 events	155249	248375	177842	264322	191088	170519
rejected events	31446	51409	30757	46858	36937	33154
rejected %	20%	20%	17%	17%	19%	19%

	ccd 4	ccd 5	ccd 6	ccd 7	ccd 8	ccd 9
grade 0 events	72033	24377	79764	38401	83807	75311
	46%	9%	44%	14%	43%	44%
grade 1 events	522	209	422	111	497	429
	0%	0%	0%	0%	0%	0%
grade 2 events	19645	91720	25501	65315	27088	23677
	12%	36%	14%	24%	14%	13%
grade 3 events	8257	6417	8983	16120	9963	8838
	5%	2%	5%	6%	5%	5%
grade 4 events	8019	6162	9163	15689	9909	8653
	5%	2%	5%	5%	5%	5%
grade 5 events	1872	5440	2199	5820	2685	2336
	1%	2%	1%	2%	1%	1%
grade 6 events	15849	68290	23674	81939	23384	20886
	10%	27%	13%	30%	12%	12%
grade 7 events	29052	45760	28136	40927	33755	30389
	18%	18%	15%	15%	17%	17%

2.2 Compared Parameters

Parameter	Planned	Actual	Parameter	Planned	Actual
Instrument	ACIS	ACIS	Obspar format version number	6	6
Detector	ACIS-456789	ACIS-456789	Obspar file type	PREDICTED	ACTUAL
Grating	NONE	NONE	Obspar update status	NONE	UPDATED
Data mode	FAINT	FAINT	On-chip summing requested	N	N
Observation mode	SECONDARY	SECONDARY	Subarray requested	NONE	NONE
Pointing RA	0	261.974640947825	Alternating exposures requested	N	N
Pointing Dec	0	9.013821533339135	Primary exposure time	0.000000	3.2
Pointing Roll	0.0	118.0981744898153			
SIM focus pos (mm)	-0.684267	-0.6828225247311905			
SIM defocus (mm)	0	0.8505141146731063			
SIM translation stage pos (mm)	-190.132523	250.466033080201			
SIM translation stage offset (mm)	0	-0.01005468664627074			
Observation start time	199671476.939734	199671475.91474			
Observation start date	2004-04-30T00:17:57	2004-04-30T00:17:55			
Observation end time	199684191.040294	199684190.0153			
Observation end date	2004-04-30T03:49:51	2004-04-30T03:49:50			
Read mode	TIMED	TIMED			

2.3 Aspect

2.4 Star Slots

2.5 FID Slots

A Summary

A.1 Status

V&V Scientist	Beth Sundheim
V&V Date (YYYY-MM-DD)	2006.05.21
V&V Edition	1
V&V Disposition and Status	OK
V&V Charge Time	6.63999997

A.2 Comments