

V&V Reference Report

L2 ASCDS Version : 7.6.7.2

Observation 60187 - L2 Version 001
Chandra X-Ray Center

L2 Processing Date : May 23 2006

Contents

1	Front	2
2	OBI	3
2.1	OBI	3
2.1.1	Images	3
2.1.2	Bias	3
2.1.3	Parameters	4
2.1.4	Events	4
2.2	Compared Parameters	5
2.3	Aspect	6
2.4	Star Slots	8
2.5	FID Slots	8
A	Summary	9
A.1	Status	9
A.2	Comments	9

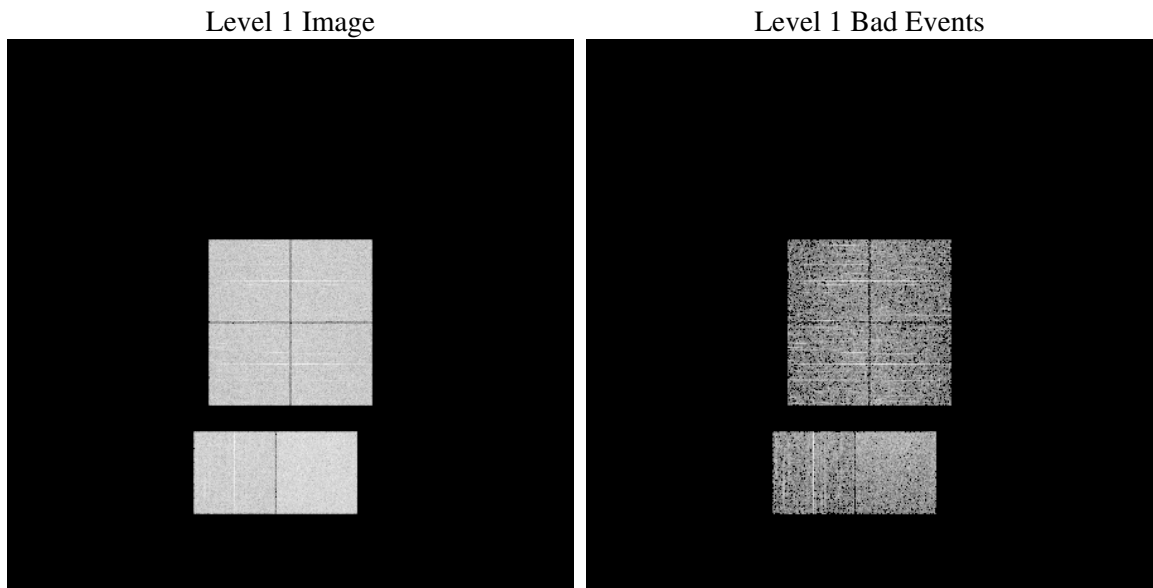
1 Front

seq_num	
obs_id	60187
title	ACIS-012367 diagnostics
observer	CHANDRA engineering request/realtime commanding
object	
dtcycle	0
cycle	P
ra_targ	0.0
dec_targ	0.0
ra_nom	257.0189523229
dec_nom	-26.020798414275
roll_nom	282.08964456637
revision	2
ontime	2772.9848271012
livetime	2737.8716235295
ontime0	2134.5528817177
ontime1	2231.8236985803
ontime2	2053.6102457941
ontime3	2134.4709013999
ontime6	2290.2430751026
ontime7	2772.9848271012
l2events	400654

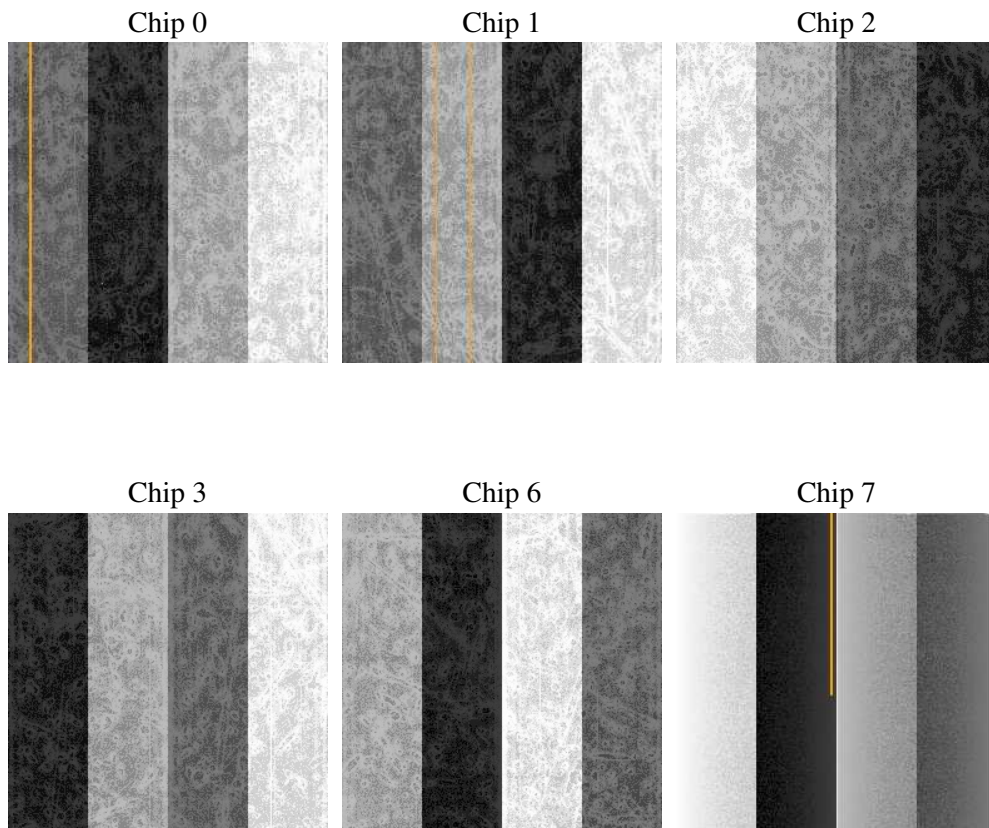
2 OBI

2.1 OBI

2.1.1 Images



2.1.2 Bias



2.1.3 Parameters

obi_num	0
ascdsver	7.6.7.2
caldbver	3.2.2
date	2006-05-24T01:41:13
revision	2

sched_exp_time	0.0
ontime	2774.3031726182
ontime0	2135.8301872313
ontime1	2233.0599640906
ontime2	2054.8054713011
ontime3	2135.8302869201
ontime6	2291.3972606361
ontime7	2774.3031726182
l1events	519749

2.1.4 Events

	ccd 0	ccd 1	ccd 2	ccd 3	ccd 6	ccd 7
level 1 events	79510	81759	79082	80909	90173	108316
rejected events	15259	14686	16388	15542	17083	20295
rejected %	19%	17%	20%	19%	18%	18%

	ccd 0	ccd 1	ccd 2	ccd 3	ccd 6	ccd 7
grade 0 events	35245	36776	35055	36870	39792	15233
	44%	44%	44%	45%	44%	14%
grade 1 events	208	169	239	227	167	36
	0%	0%	0%	0%	0%	0%
grade 2 events	11315	11820	10562	11059	12569	26511
	14%	14%	13%	13%	13%	24%
grade 3 events	4177	4284	3968	4259	4562	6361
	5%	5%	5%	5%	5%	5%
grade 4 events	4094	4163	4247	4192	4523	6255
	5%	5%	5%	5%	5%	5%
grade 5 events	947	1044	918	1068	1093	2366
	1%	1%	1%	1%	1%	2%
grade 6 events	9420	10030	8862	8987	11644	33661
	11%	12%	11%	11%	12%	31%
grade 7 events	14104	13473	15231	14247	15823	17893
	17%	16%	19%	17%	17%	16%

2.2 Compared Parameters

Parameter	Planned	Actual	Parameter	Planned	Actual
Instrument	ACIS	ACIS	Obspar format version number	6	6
Detector	ACIS-012367	ACIS-012367	Obspar file type	PREDICTED	ACTUAL
Grating	NONE	NONE	Obspar update status	NONE	UPDATED
Data mode	FAINT	FAINT	On-chip summing requested	N	N
Observation mode	SECONDARY	SECONDARY	Subarray requested	NONE	NONE
Pointing RA	0	257.0189523229039	Alternating exposures requested	N	N
Pointing Dec	0	-26.02079841427507	Primary exposure time	0.000000	3.2
Pointing Roll	0.0	282.0896445663676			
SIM focus pos (mm)	-0.782348	-0.7809083437167272			
SIM defocus (mm)	0	0.7524282956875696			
SIM translation stage pos (mm)	-233.592463	250.466033080201			
SIM translation stage offset (mm)	0	-0.01005468664627074			
Observation start time	204010839.231449	204010838.20642			
Observation start date	2004-06-19T05:40:39	2004-06-19T05:40:38			
Observation end time	204025482.382098	204025481.35707			
Observation end date	2004-06-19T09:44:42	2004-06-19T09:44:41			
Read mode	TIMED	TIMED			

2.3 Aspect

2.4 Star Slots

2.5 FID Slots

A Summary

A.1 Status

V&V Scientist	Jen Lauer
V&V Date (YYYY-MM-DD)	2006.05.24
V&V Edition	1
V&V Disposition and Status	OK
V&V Charge Time	2.77298482

A.2 Comments