

# V&V Reference Report

## L2 ASCDS Version : 7.6.7.1

Observation 60007 - L2 Version 001  
Chandra X-Ray Center

L2 Processing Date : Apr 15 2006

## Contents

<b>1</b>	<b>Front</b>	<b>2</b>
<b>2</b>	<b>OBI</b>	<b>3</b>
2.1	OBI . . . . .	3
2.1.1	Images . . . . .	3
2.1.2	Bias . . . . .	3
2.1.3	Parameters . . . . .	4
2.1.4	Events . . . . .	4
2.2	Compared Parameters . . . . .	5
2.3	Aspect . . . . .	6
2.4	Star Slots . . . . .	8
2.5	FID Slots . . . . .	8
<b>A</b>	<b>Summary</b>	<b>9</b>
A.1	Status . . . . .	9
A.2	Comments . . . . .	9

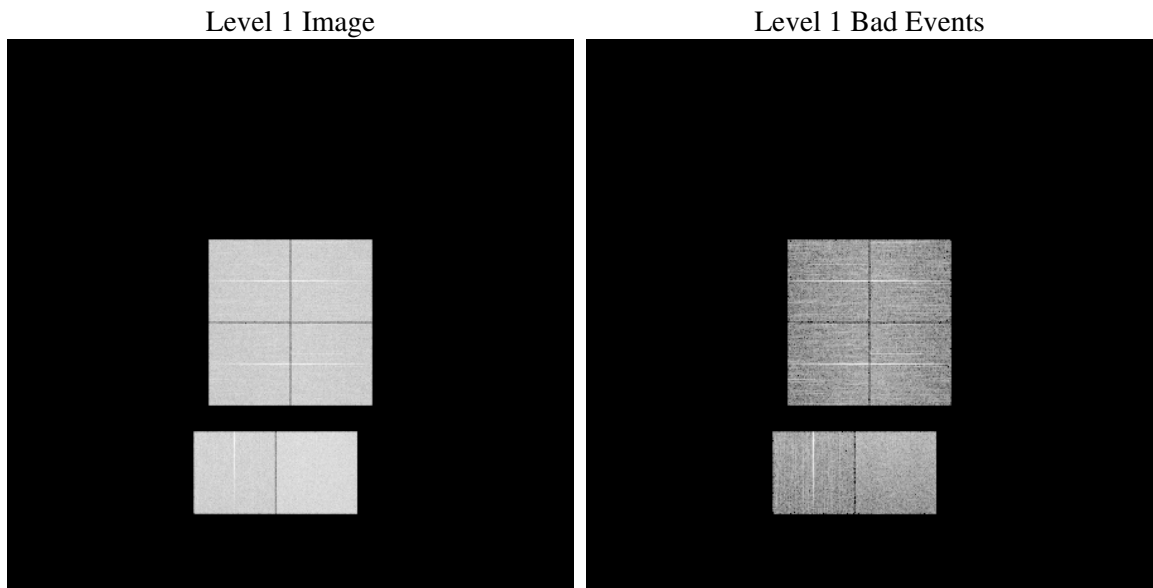
# 1 Front

seq_num	&#160
obs_id	60007
title	ACIS-012367 diagnostics
observer	CHANDRA engineering request/realtime commanding
object	&#160
dtcycle	0
cycle	P
ra_targ	0.0
dec_targ	0.0
ra_nom	13.028684780558
dec_nom	1.0005118137475
roll_nom	327.95787787041
revision	2
ontime	8278.3999691606
livetime	8173.573884097
ontime0	6589.8536087275
ontime1	6774.7213673294
ontime2	6307.8888052702
ontime3	6586.6126092374
ontime6	7027.3849772215
ontime7	8278.3999691606
l2events	1122056

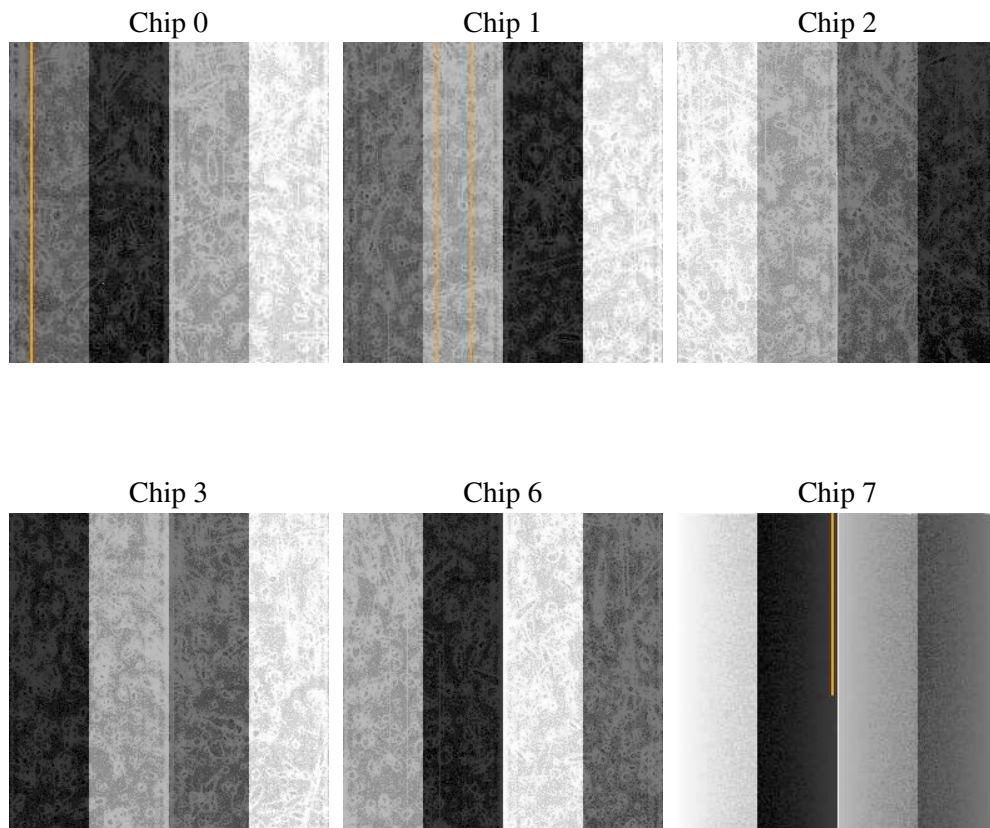
## 2 OBI

### 2.1 OBI

#### 2.1.1 Images



#### 2.1.2 Bias



### 2.1.3 Parameters

obi_num	0
ascdsver	7.6.7.1
caldbver	3.2.1
date	2006-04-15T14:58:18
revision	2

sched_exp_time	0.0
ontime	8287.2486403883
ontime0	6595.4612598419
ontime1	6783.4378063679
ontime2	6313.4964563847
ontime3	6595.4612804651
ontime6	7036.2336484492
ontime7	8287.2486403883
l1events	1498685

### 2.1.4 Events

	ccd 0	ccd 1	ccd 2	ccd 3	ccd 6	ccd 7
level 1 events	230992	238800	225707	235755	257805	309626
rejected events	48879	51601	49960	51941	54049	63922
rejected %	21%	21%	22%	22%	20%	20%

	ccd 0	ccd 1	ccd 2	ccd 3	ccd 6	ccd 7
grade 0 events	100148	102362	98343	103142	110679	42007
	43%	42%	43%	43%	42%	13%
grade 1 events	626	544	641	635	588	122
	0%	0%	0%	0%	0%	0%
grade 2 events	32221	33196	29836	31377	35454	74486
	13%	13%	13%	13%	13%	24%
grade 3 events	11730	12240	11551	12086	12846	17344
	5%	5%	5%	5%	4%	5%
grade 4 events	11732	11964	11333	11974	12527	17205
	5%	5%	5%	5%	4%	5%
grade 5 events	3134	3218	2779	3226	3477	7583
	1%	1%	1%	1%	1%	2%
grade 6 events	26465	27731	24883	25502	32531	94995
	11%	11%	11%	10%	12%	30%
grade 7 events	44936	47545	46341	47813	49703	55884
	19%	19%	20%	20%	19%	18%

## 2.2 Compared Parameters

Parameter	Planned	Actual	Parameter	Planned	Actual
Instrument	ACIS	ACIS	Obspar format version number	6	6
Detector	ACIS-012367	ACIS-012367	Obspar file type	PREDICTED	ACTUAL
Grating	NONE	NONE	Obspar update status	NONE	UPDATED
Data mode	FAINT	FAINT	On-chip summing requested	N	N
Observation mode	SECONDARY	SECONDARY	Subarray requested	NONE	NONE
Pointing RA	0	13.02868478055786	Alternating exposures requested	N	N
Pointing Dec	0	1.000511813747491	Primary exposure time	3.2	3.2
Pointing Roll	0.0	327.9578778704146			
SIM focus pos (mm)	-0.782348	-0.6828225247311905			
SIM defocus (mm)	0	0.8505141146731063			
SIM translation stage pos (mm)	-233.592463	250.4635187648994			
SIM translation stage offset (mm)	0	-0.007540371344731511			
Observation start time	213869299.920174	213869298.8952			
Observation start date	2004-10-11T08:08:20	2004-10-11T08:08:18			
Observation end time	213891790.471178	213891789.44621			
Observation end date	2004-10-11T14:23:10	2004-10-11T14:23:09			
Read mode	TIMED	TIMED			

## 2.3 Aspect



## 2.4 Star Slots

## 2.5 FID Slots



## A Summary

### A.1 Status

V&V Scientist	Beth Sundheim
V&V Date (YYYY-MM-DD)	2006.04.16
V&V Edition	1
V&V Disposition and Status	OK
V&V Charge Time	8.27839996

### A.2 Comments