

# V&V Reference Report

## L2 ASCDS Version : 7.6.7.1

Observation 59927 - L2 Version 002  
Chandra X-Ray Center

L2 Processing Date : Apr 8 2006

## Contents

<b>1</b>	<b>Front</b>	<b>2</b>
<b>2</b>	<b>OBI</b>	<b>3</b>
2.1	OBI . . . . .	3
2.1.1	Images . . . . .	3
2.1.2	Bias . . . . .	3
2.1.3	Parameters . . . . .	4
2.1.4	Events . . . . .	4
2.2	Compared Parameters . . . . .	5
2.3	Aspect . . . . .	6
2.4	Star Slots . . . . .	8
2.5	FID Slots . . . . .	8
<b>A</b>	<b>Summary</b>	<b>9</b>
A.1	Status . . . . .	9
A.2	Comments . . . . .	9

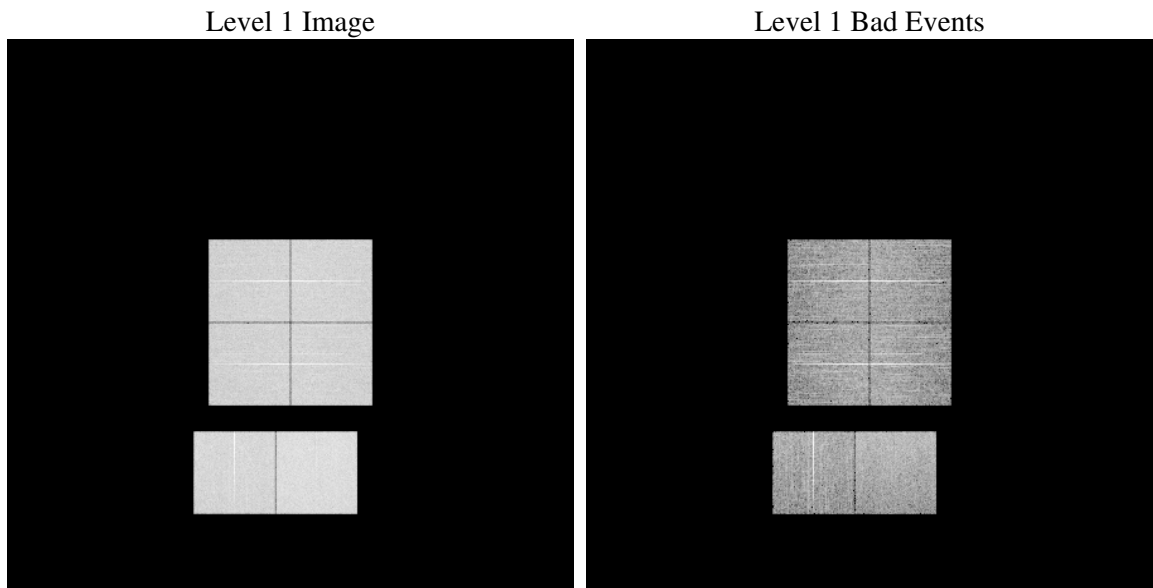
# 1 Front

seq_num	&#160
obs_id	59927
title	ACIS-012367 diagnostics
observer	CHANDRA engineering request/realtime commanding
object	&#160
dtcycle	0
cycle	P
ra_targ	0.0
dec_targ	0.0
ra_nom	105.00236773014
dec_nom	5.028496055472
roll_nom	52.373389248608
revision	2
ontime	8284.7999691367
livetime	8179.8928434199
ontime0	6900.9016449153
ontime1	7212.0357828736
ontime2	6648.4559596777
ontime3	6832.8411986232
ontime6	7306.024172008
ontime7	8284.7999691367
l2events	1119632

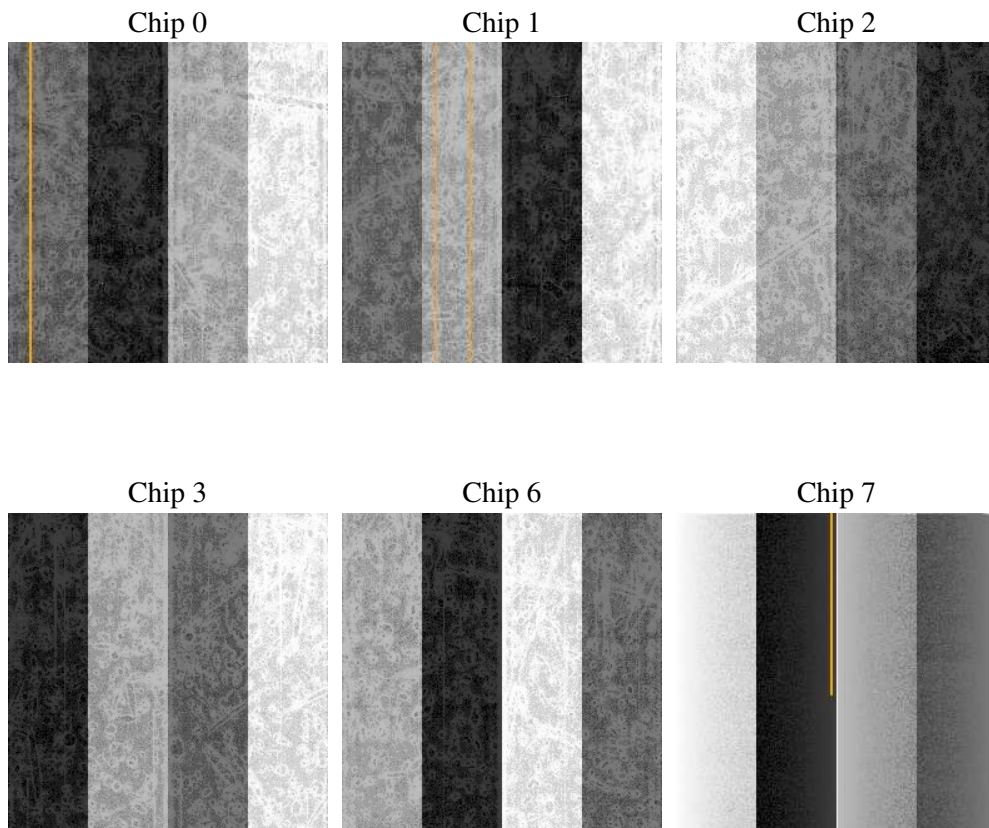
## 2 OBI

### 2.1 OBI

#### 2.1.1 Images



#### 2.1.2 Bias



### 2.1.3 Parameters

obi_num	0
ascdsver	7.6.7.1
caldbver	3.2.1
date	2006-04-09T00:39:11
revision	2

sched_exp_time	0.0
ontime	8287.2592127323
ontime0	6903.3608885109
ontime1	7214.4950264692
ontime2	6650.5641384721
ontime3	6835.3004422188
ontime6	7308.4834156036
ontime7	8287.2592127323
l1events	1496316

### 2.1.4 Events

	ccd 0	ccd 1	ccd 2	ccd 3	ccd 6	ccd 7
level 1 events	232057	243118	228842	236127	258434	297738
rejected events	49414	50713	51030	52383	54110	62202
rejected %	21%	20%	22%	22%	20%	20%

	ccd 0	ccd 1	ccd 2	ccd 3	ccd 6	ccd 7
grade 0 events	100374	104891	99412	103030	110612	39343
	43%	43%	43%	43%	42%	13%
grade 1 events	680	529	618	679	601	134
	0%	0%	0%	0%	0%	0%
grade 2 events	31683	34513	29999	31303	35252	71208
	13%	14%	13%	13%	13%	23%
grade 3 events	12087	12369	11577	12118	12865	16750
	5%	5%	5%	5%	4%	5%
grade 4 events	11781	12380	11679	12003	12752	16270
	5%	5%	5%	5%	4%	5%
grade 5 events	3070	3157	2840	3208	3555	7187
	1%	1%	1%	1%	1%	2%
grade 6 events	26805	28321	25224	25387	32930	92055
	11%	11%	11%	10%	12%	30%
grade 7 events	45577	46958	47493	48399	49867	54791
	19%	19%	20%	20%	19%	18%

## 2.2 Compared Parameters

Parameter	Planned	Actual	Parameter	Planned	Actual
Instrument	ACIS	ACIS	Obspar format version number	6	6
Detector	ACIS-012367	ACIS-012367	Obspar file type	PREDICTED	ACTUAL
Grating	NONE	NONE	Obspar update status	NONE	UPDATED
Data mode	FAINT	FAINT	On-chip summing requested	N	N
Observation mode	SECONDARY	SECONDARY	Subarray requested	NONE	NONE
Pointing RA	0	105.0023677301436	Alternating exposures requested	N	N
Pointing Dec	0	5.028496055472041	Primary exposure time	3.2	3.2
Pointing Roll	0.0	52.37338924860758			
SIM focus pos (mm)	-0.782348	-0.6828225247311905			
SIM defocus (mm)	0	0.8505141146731063			
SIM translation stage pos (mm)	-233.592463	250.4635187648994			
SIM translation stage offset (mm)	0	-0.007540371344731511			
Observation start time	219125426.355961	219125425.33097			
Observation start date	2004-12-11T04:10:26	2004-12-11T04:10:25			
Observation end time	219146736.106919	219146735.08192			
Observation end date	2004-12-11T10:05:36	2004-12-11T10:05:35			
Read mode	TIMED	TIMED			

## 2.3 Aspect



## **2.4 Star Slots**

## **2.5 FID Slots**



## A Summary

### A.1 Status

V&V Scientist	Jen Lauer
V&V Date (YYYY-MM-DD)	2006.04.10
V&V Edition	1
V&V Disposition and Status	OK
V&V Charge Time	8.28479996

### A.2 Comments