

V&V Reference Report

L2 ASCDS Version : 8.5.1.1

Observation 5987 - L2 Version 4
Chandra X-Ray Center

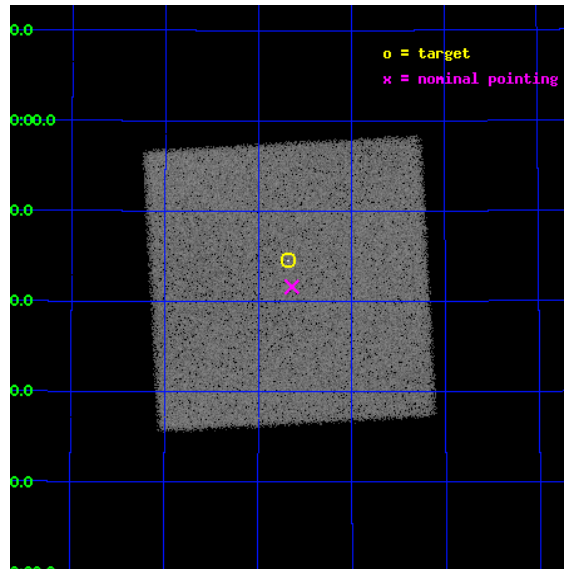
L2 Processing Date : Dec 29 2012

Contents

1	Front	2
2	OBI	3
2.1	OBI	3
2.1.1	Images	3
2.1.2	Parameters	4
2.1.3	Events	4
2.2	Compared Parameters	5
2.3	Aspect	6
2.4	Star Slots	9
2.4.1	Slot 3	9
2.4.2	Slot 4	10
2.4.3	Slot 5	11
2.4.4	Slot 6	12
2.4.5	Slot 7	13
2.5	FID Slots	14
2.5.1	Slot 0	14
2.5.2	Slot 1	15
2.5.3	Slot 2	16
A	Summary	17
A.1	Status	17
A.2	Comments	17

1 Front

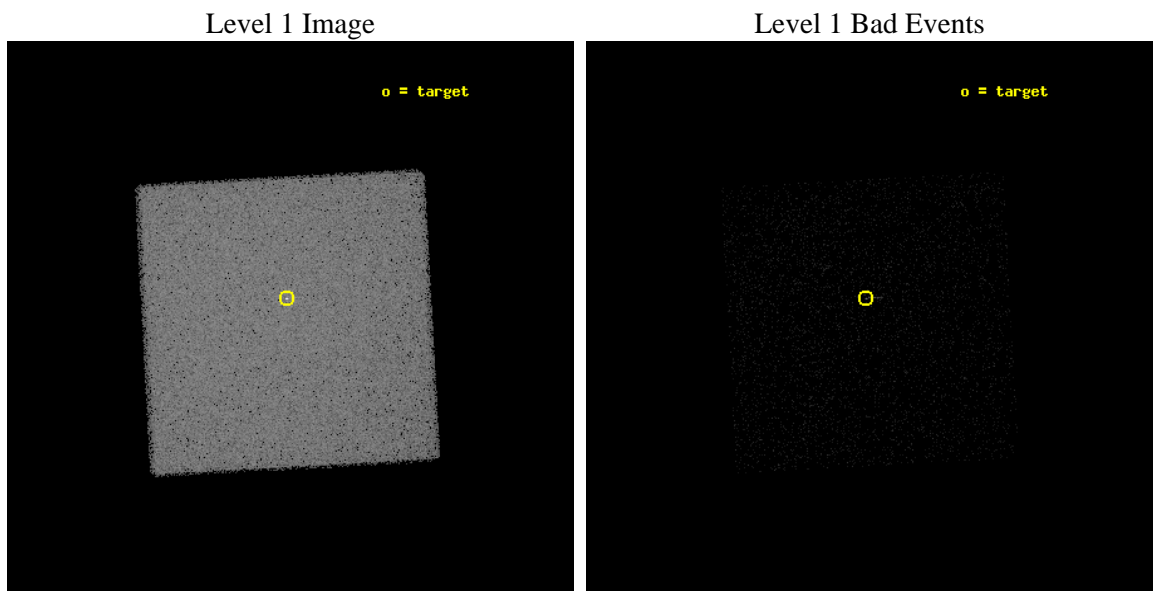
seq_num	290479	Sequence number
obs_id	5987	Observation id
title	AO6 Calibration Observations to Monitor the Spatial Variations in the HRC-I Gain	Proposal title
observer	Dr. CXC Calibration	Principal investigator
object	ArLac	Source name
ra_targ	332.17	Observer's specified target RA [deg]
dec_targ	45.742306	Observer's specified target Dec [deg]
ra_nom	332.15991488548	Nominal RA [deg]
dec_nom	45.693891222851	Nominal Dec [deg]
roll_nom	221.88138802939	Nominal Roll [deg]
revision	4	Processing version of data
ontime	1177.9813041687	[s]
livetime	226.44247481826	Ontime multiplied by DTCOR
l2events	168814	Number of level 2 events



2 OBI

2.1 OBI

2.1.1 Images



2.1.2 Parameters

obi_num	0	Obi number	sched_exp_time	1000.000000	[s] Scheduled observation exposure time
ascdsver	8.5.1.1	Processing system revision	ontime	1177.9813041687	[s]
caldbver	4.5.5	 	l1events	278208	Number of level 1 events
date	2012-12-29T12:59:20	Date and time of file creation			
revision	4	Processing version of data			

2.1.3 Events

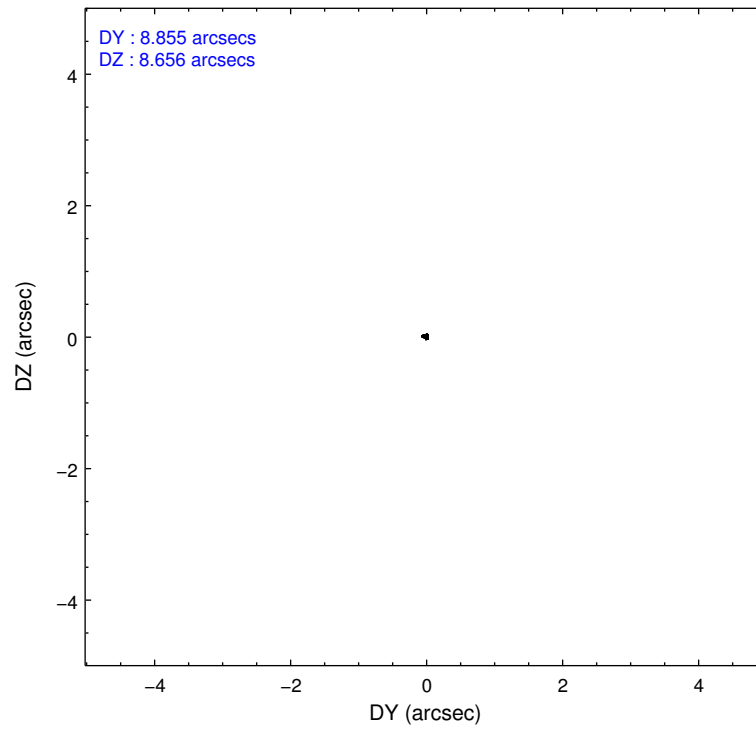
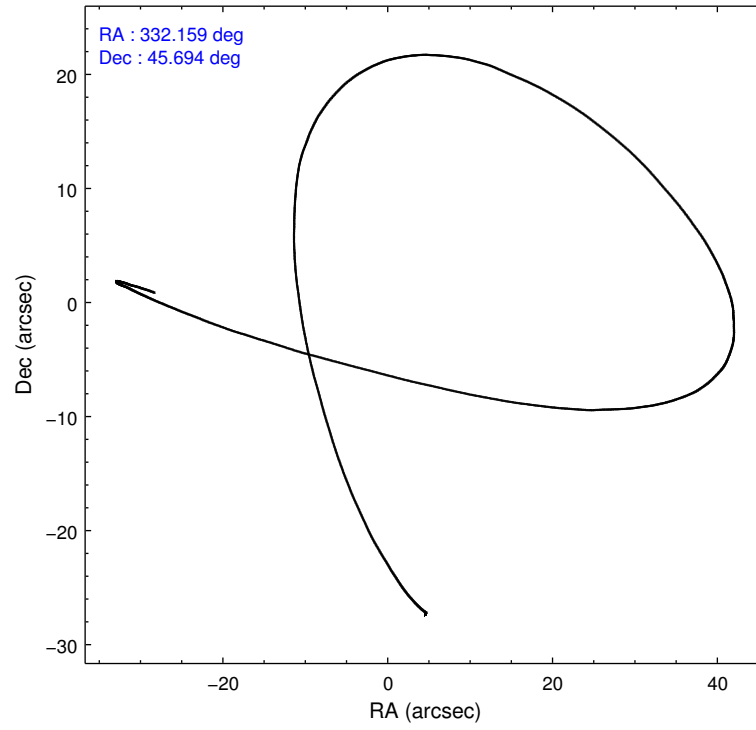
Level 1 Events

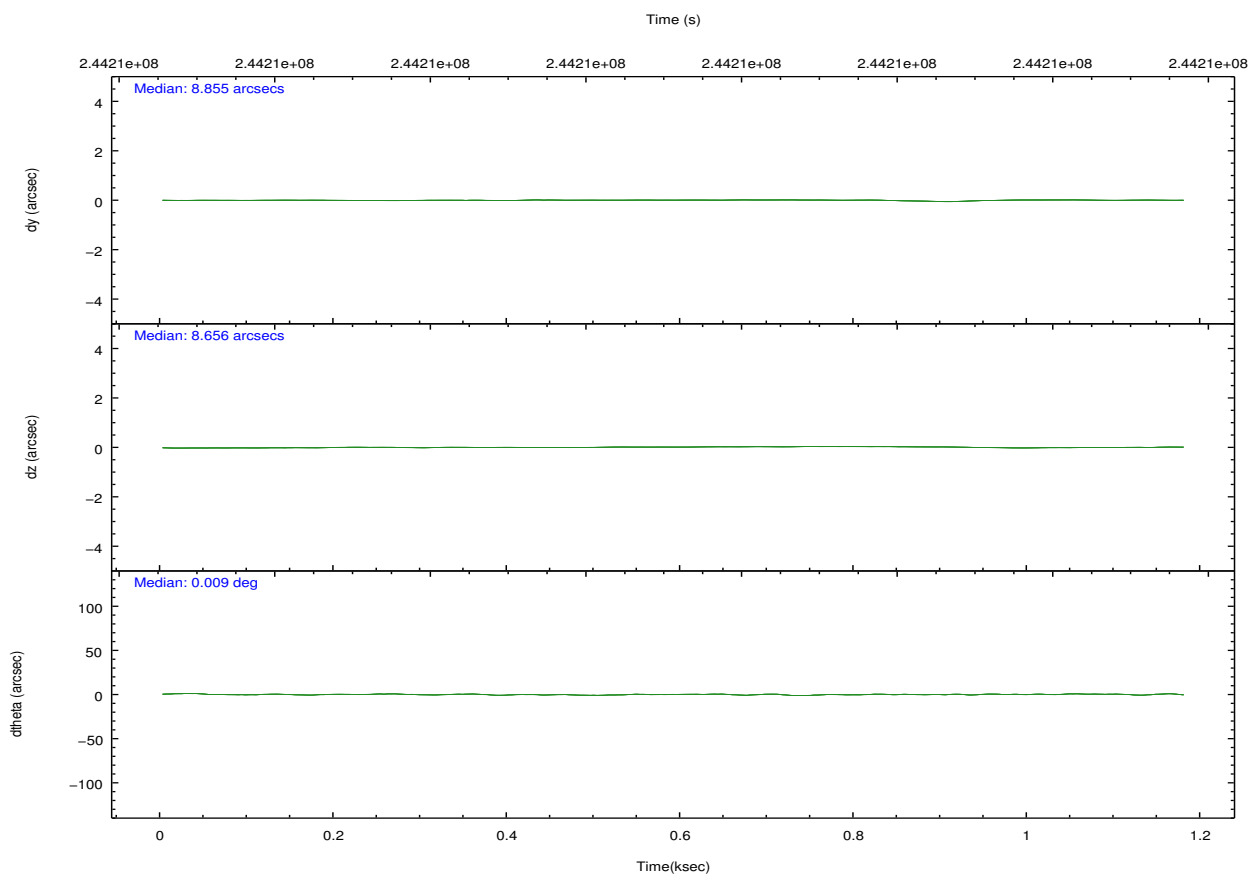
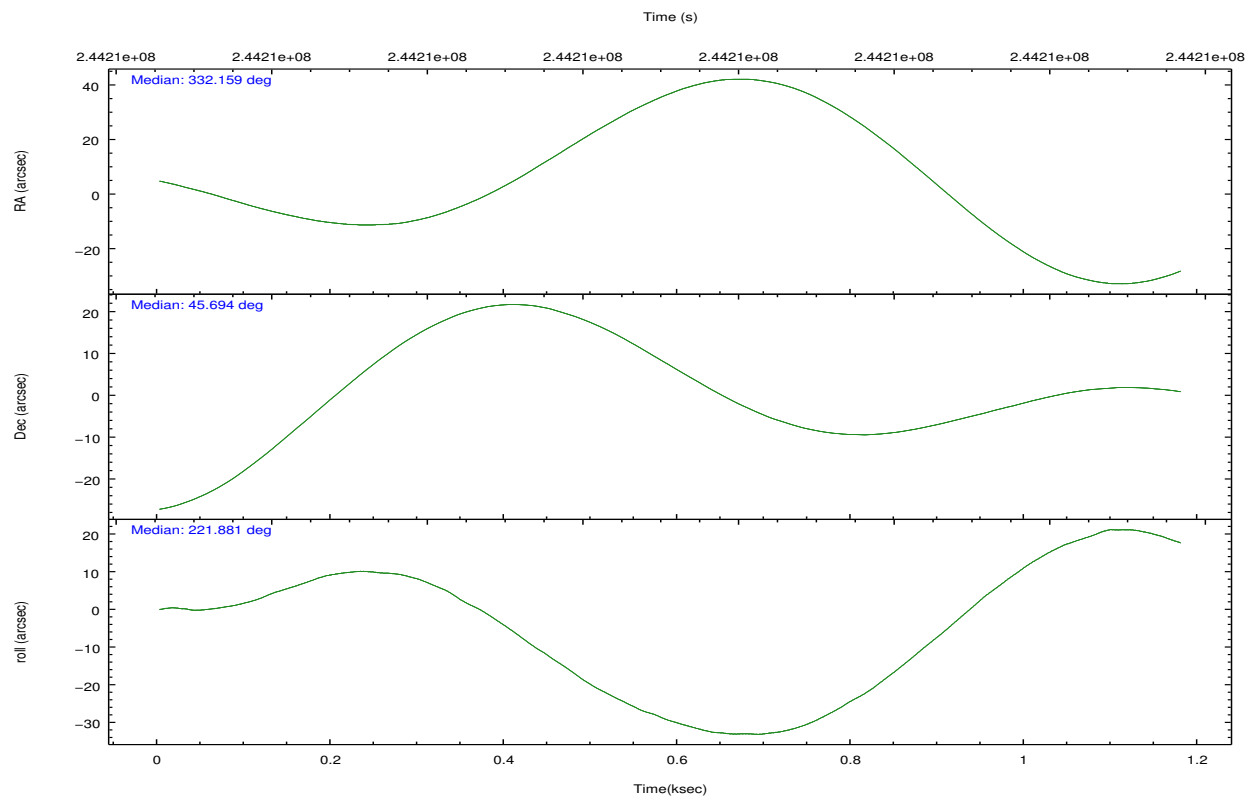
	segment 0
level 1 events	278208
rejected events	60906
rejected %	21%

2.2 Compared Parameters

Parameter	Planned	Actual	Parameter	Planned	Actual
Instrument	HRC	HRC	Obspar format version number	7	7
Detector	HRC-I	HRC-I	Obspar file type	PREDICTED	ACTUAL
Grating	NONE	NONE	Obspar update status	NONE	UPDATED
Data mode	OBSERVING	OBSERVING			
Observation mode	POINTING	POINTING			
[deg] Pointing RA	332.172015	332.159914885478			
[deg] Pointing Dec	45.719811	45.69389122285148			
[deg] Pointing Roll	221.968156	221.8813880293925			
[mm] SIM focus pos	-1.040293	-1.038866356238299			
[mm] SIM defocus	0	0.001426264420575141			
[mm] SIM translation stage pos	126.985494	126.9829799899862			
[mm] SIM translation stage offset	0	0.002508901615314585			
[s] Observation start time (MET)	244211302.184000	244210926.43514			
Observation start date	2005-09-27T12:27:18	2005-09-27T12:22:06			
[s] Observation end time (MET)	244212302.184000	244212436.26021			
Observation end date	2005-09-27T12:43:58	2005-09-27T12:47:16			

2.3 Aspect



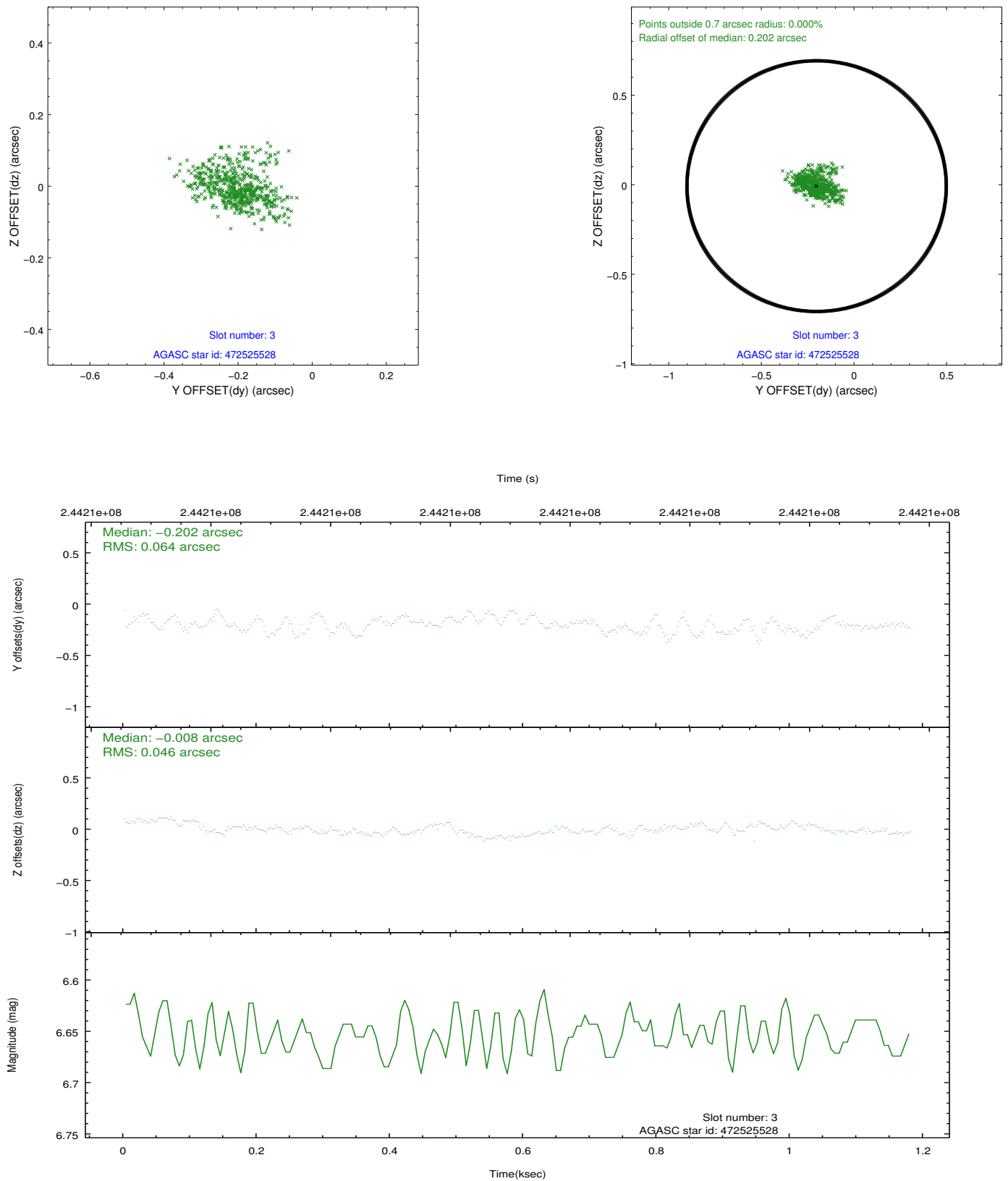


Slot Statistics

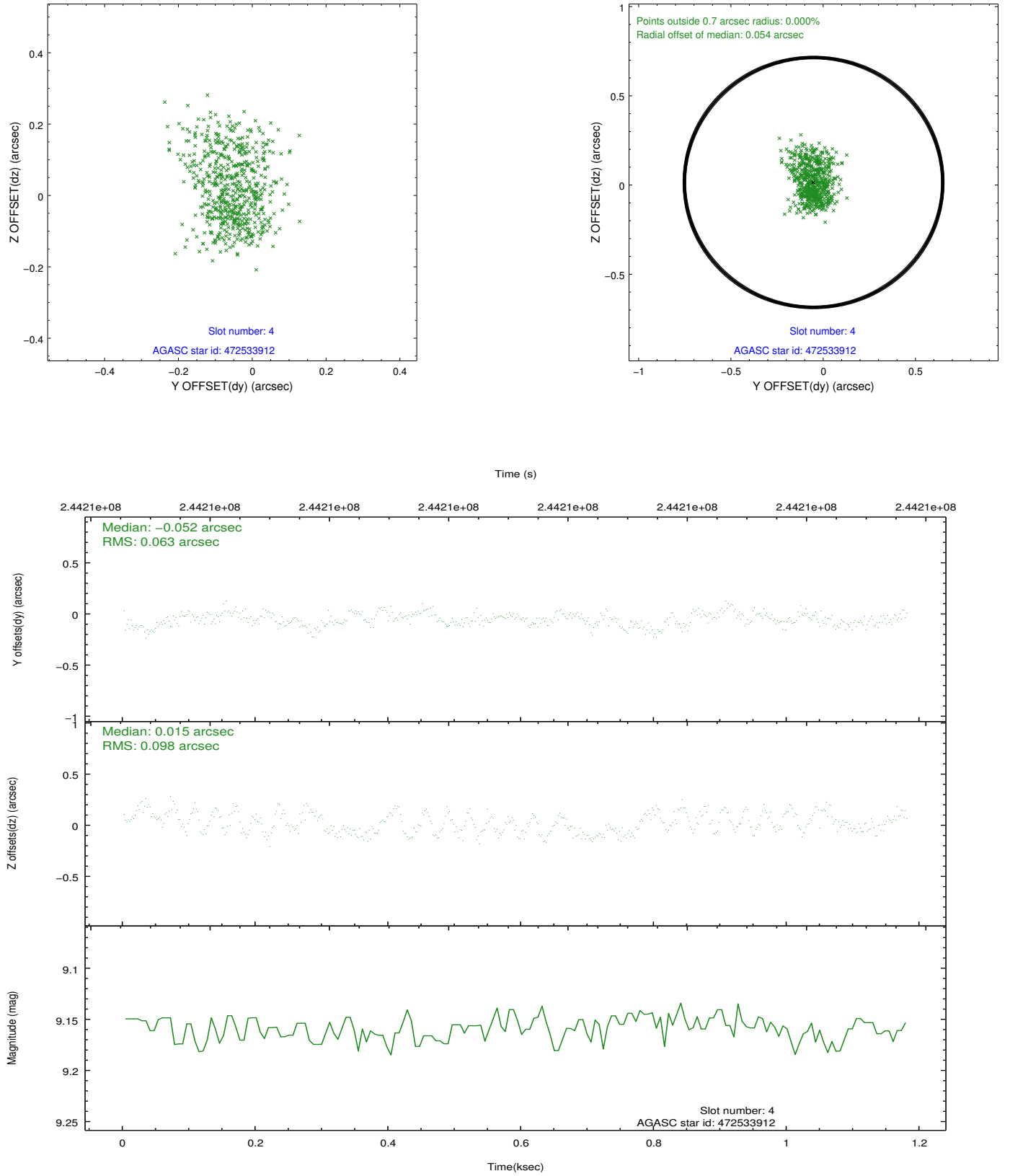
slot	status	id	mag	n_pts	med_dy	med_dz	dr1	dr2	ra	dec	mean_y	mean_z
0	FID	HRC-I-1	6.98	288	-0.018	0.063	0.008	0.013	0.000000	0.000000	-764.51	-1296.49
1	FID	HRC-I-2	7.02	288	0.164	-0.125	0.006	0.013	0.000000	0.000000	845.65	-1302.75
2	FID	HRC-I-3	7.07	288	-0.027	-0.026	0.006	0.013	0.000000	0.000000	-1190.06	1003.47
3	GUIDE	472525528	6.65	576	-0.202	-0.008	0.086	0.136	331.551102	45.248694	2298.74	206.08
4	GUIDE	472533912	9.16	576	-0.052	0.015	0.127	0.195	331.791136	46.368695	-857.39	-2369.01
5	GUIDE	472655152	9.43	576	-0.016	-0.100	0.125	0.359	332.504239	45.862991	-967.82	170.11
6	GUIDE	472661712	10.01	576	0.220	-0.019	0.132	0.254	331.914954	46.059715	-344.15	-1337.86
7	GUIDE	472665256	9.01	575	0.061	0.134	0.082	0.128	332.808125	46.195041	-2328.59	-217.14

2.4 Star Slots

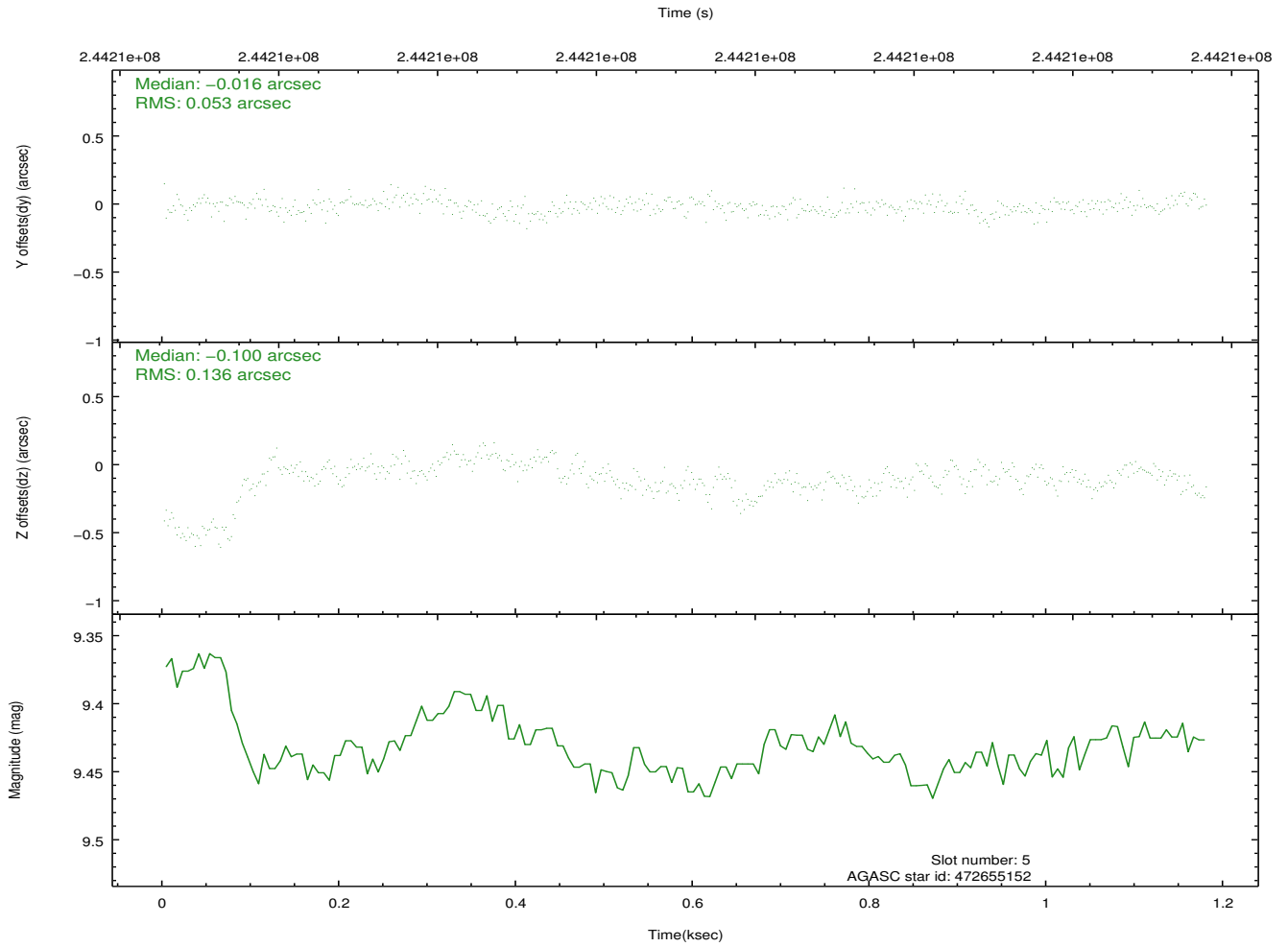
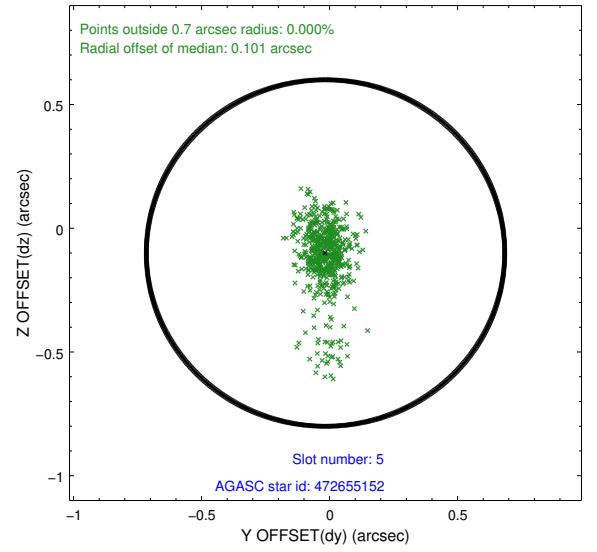
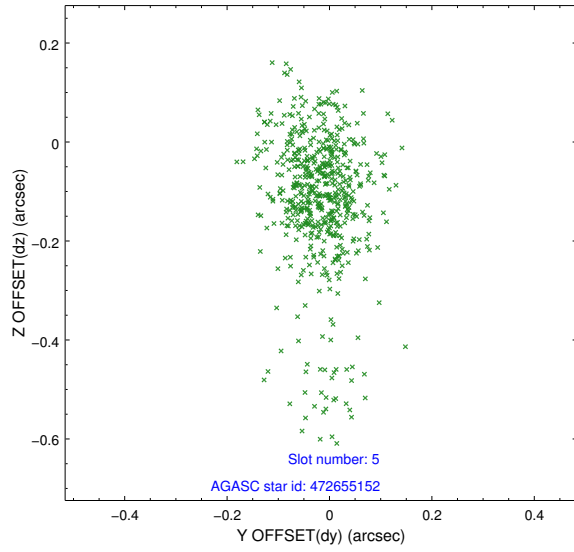
2.4.1 Slot 3



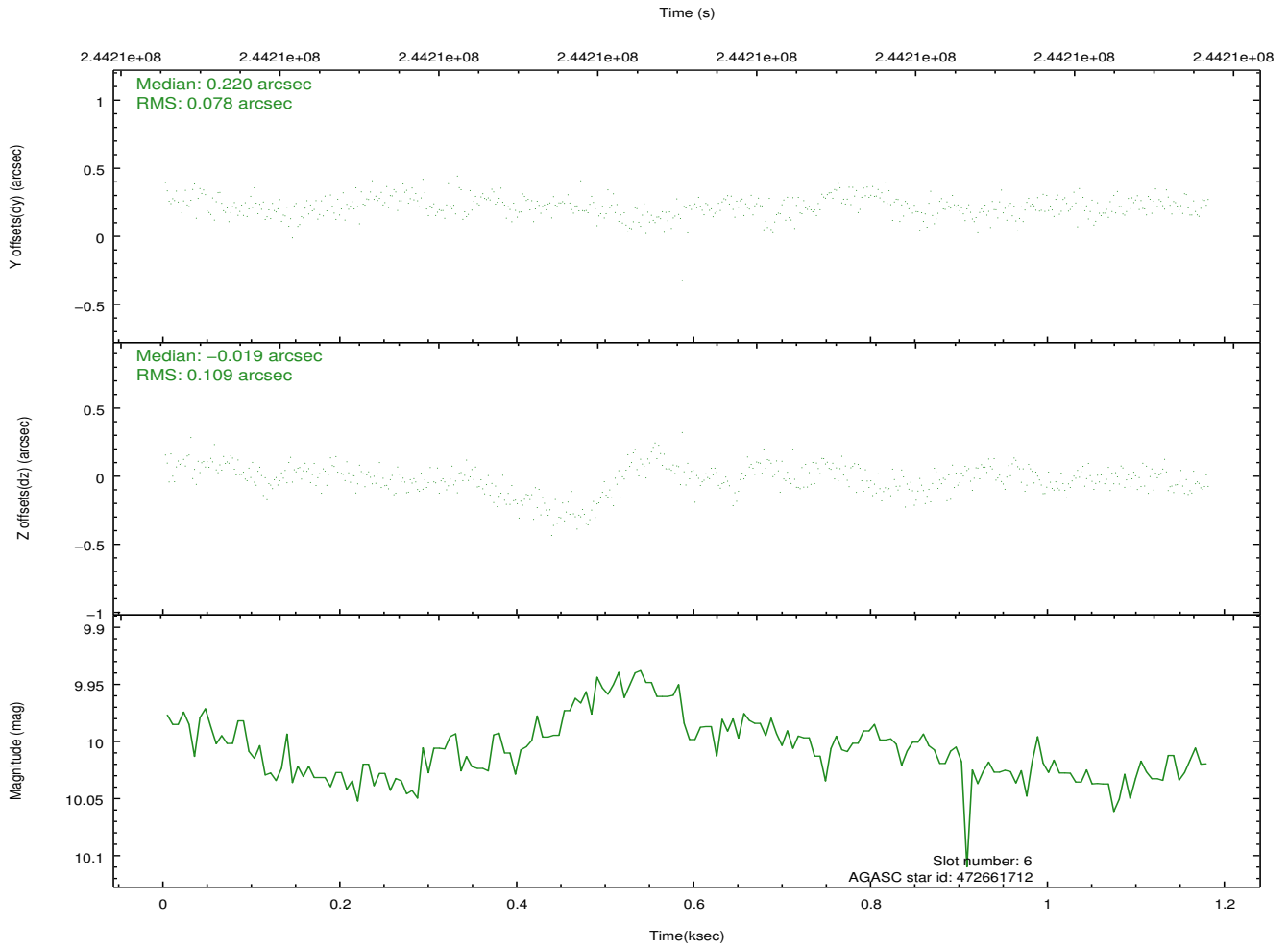
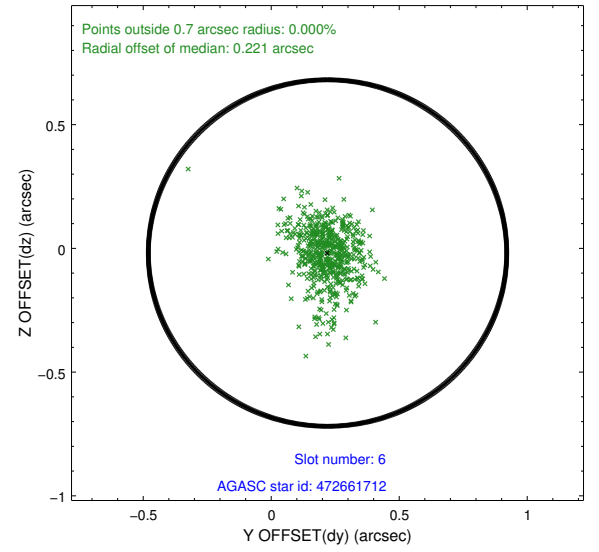
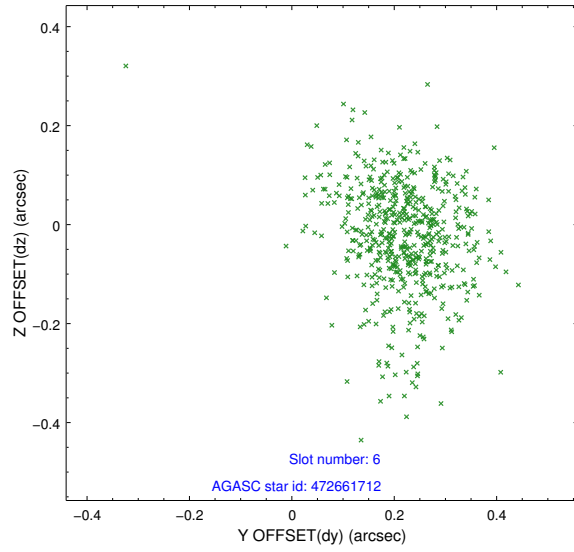
2.4.2 Slot 4



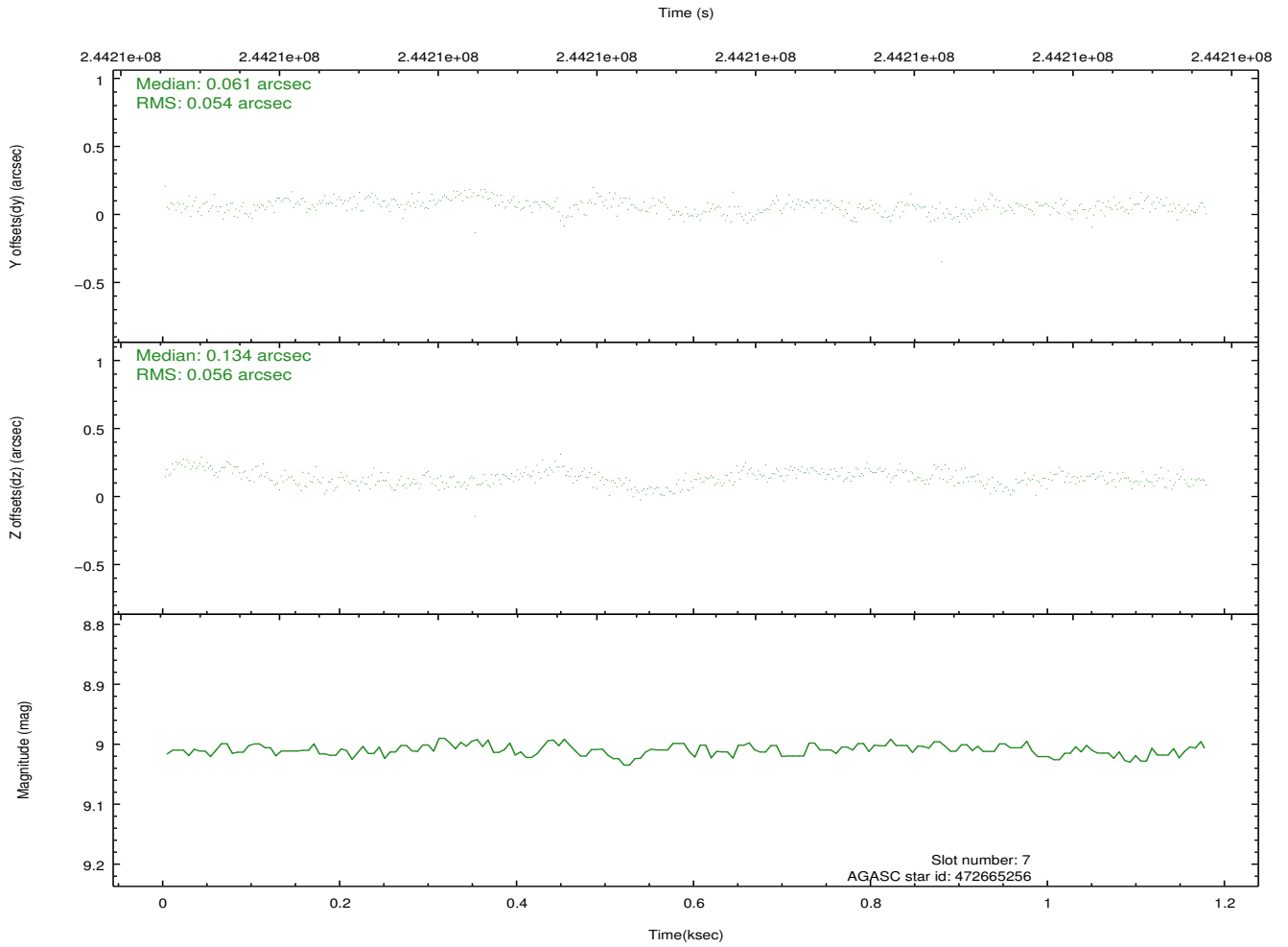
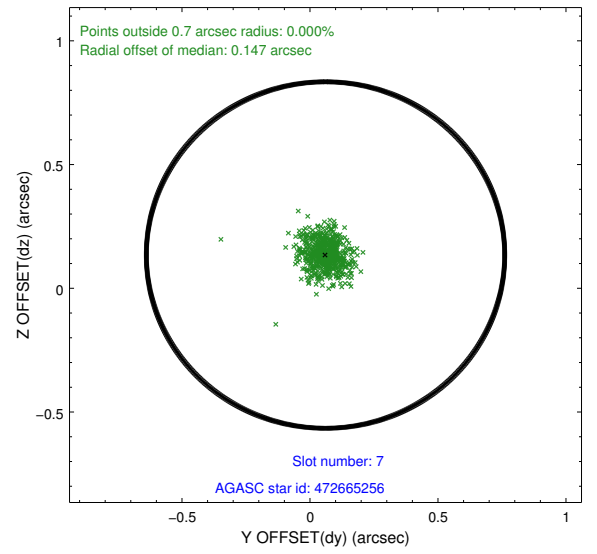
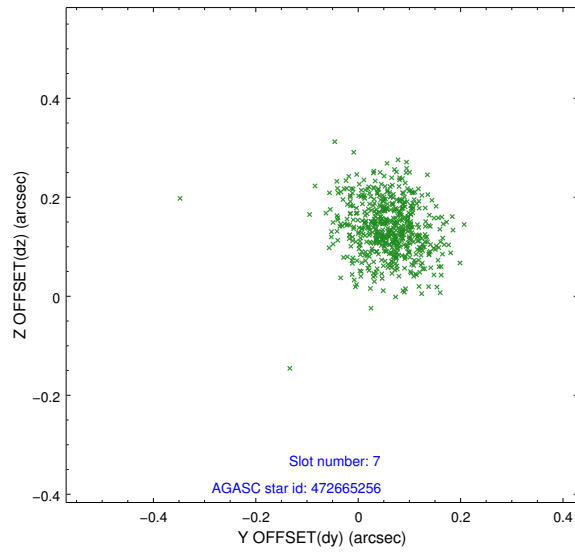
2.4.3 Slot 5



2.4.4 Slot 6

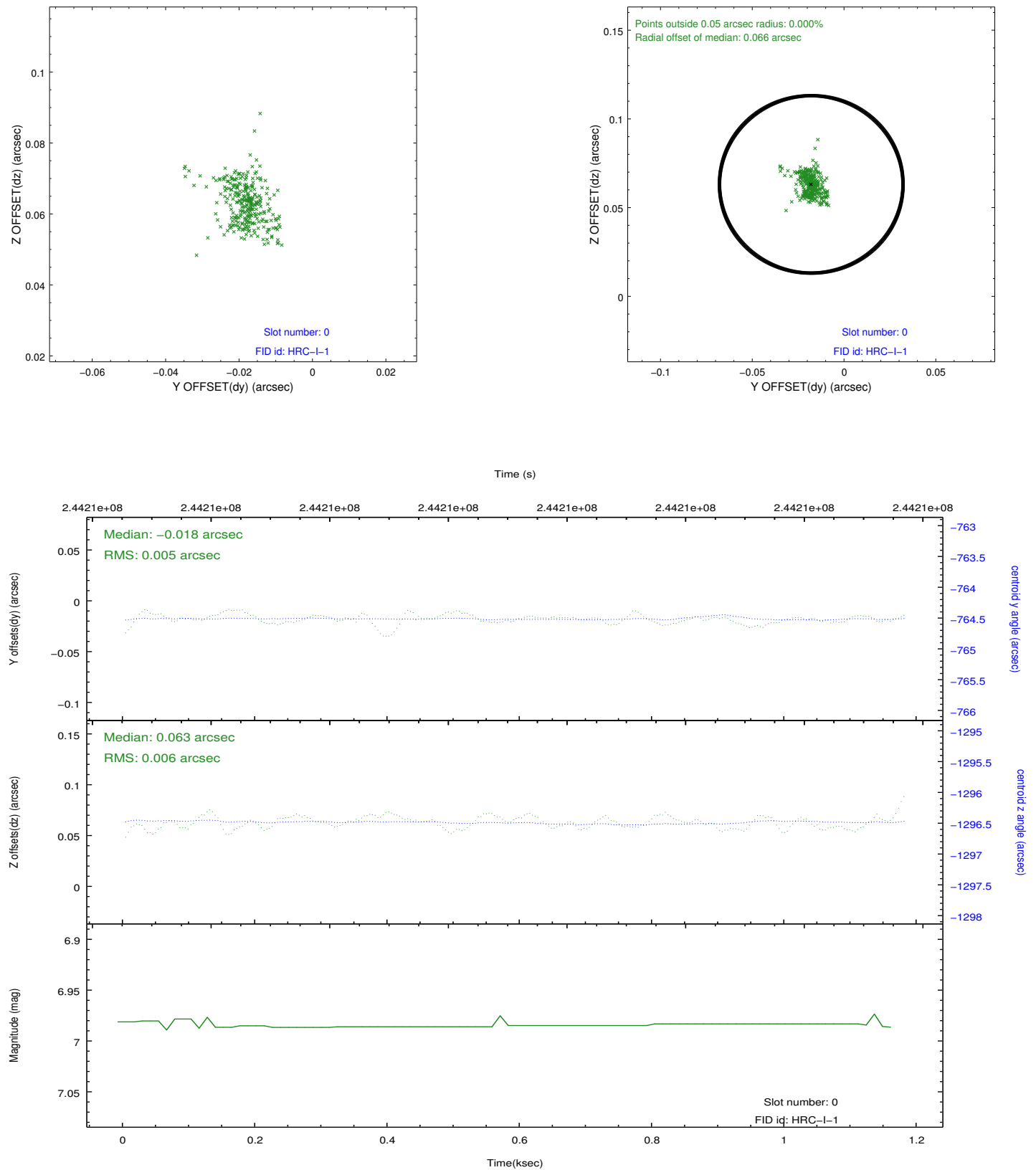


2.4.5 Slot 7

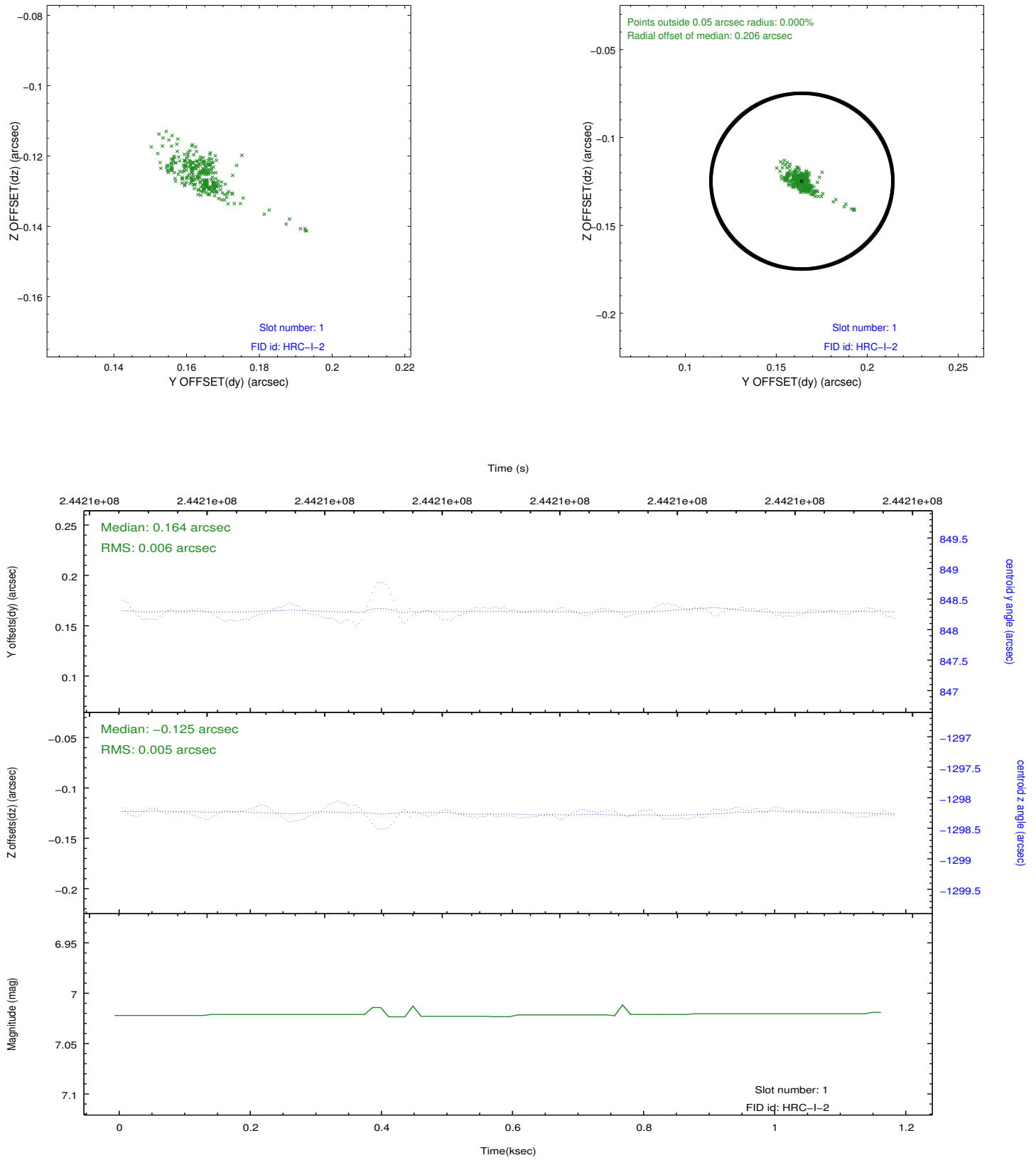


2.5 FID Slots

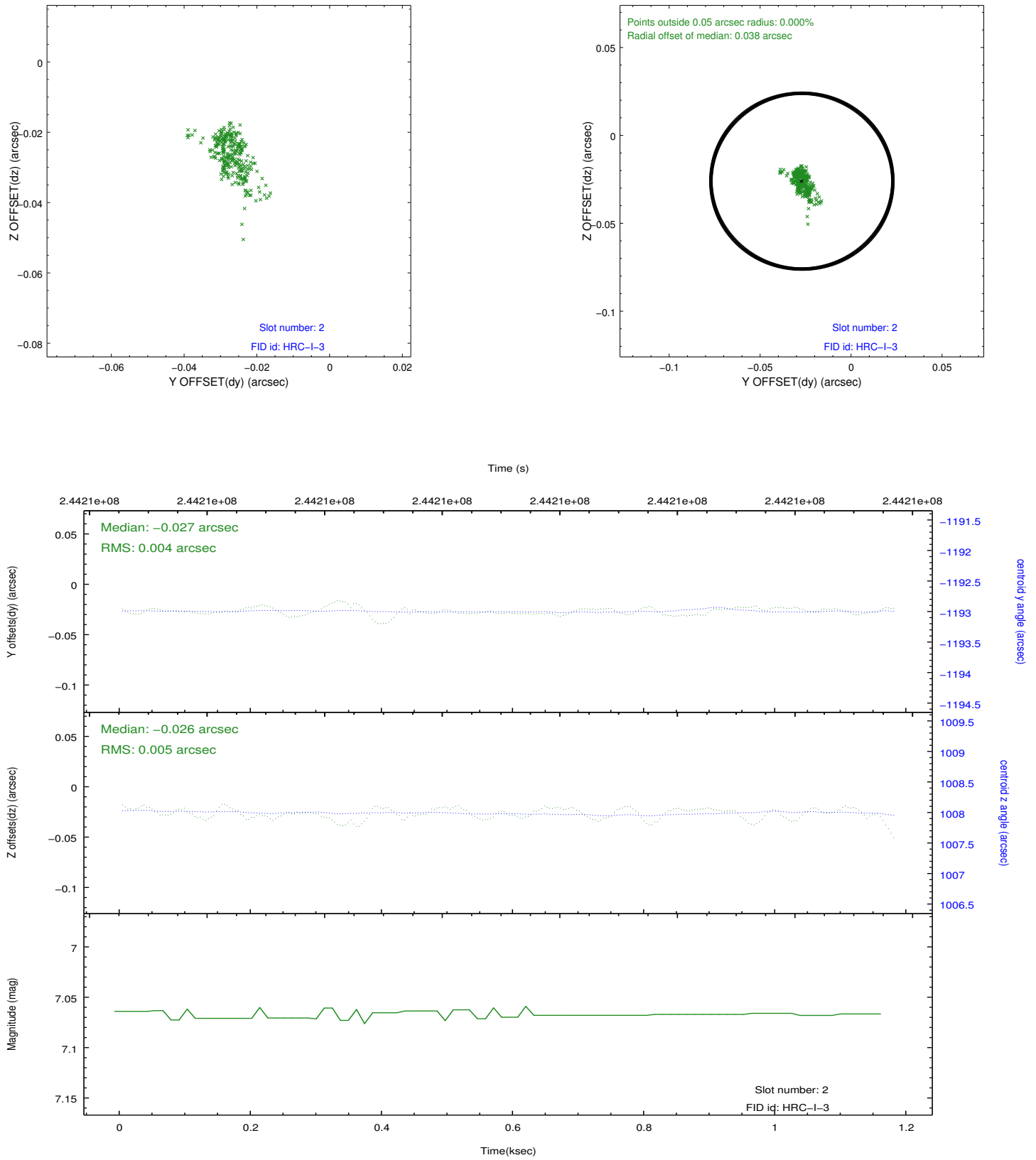
2.5.1 Slot 0



2.5.2 Slot 1



2.5.3 Slot 2



A Summary

A.1 Status

V&V Scientist	Beth Sundheim
V&V Date (YYYY-MM-DD)	2013.01.27
V&V Edition	1
V&V Disposition and Status	OK
V&V Charge Time	1.177725

A.2 Comments