

V&V Reference Report

L2 ASCDS Version : 7.6.7

Observation 59827 - L2 Version 002
Chandra X-Ray Center

L2 Processing Date: Feb 19 2006

Contents

1	Front	2
2	OBI	3
2.1	OBI	3
2.1.1	Images	3
2.1.2	Bias	3
2.1.3	Parameters	4
2.1.4	Events	4
2.2	Compared Parameters	5
2.3	Aspect	6
2.4	Star Slots	8
2.5	FID Slots	8
A	Summary	9
A.1	Status	9
A.2	Comments	9

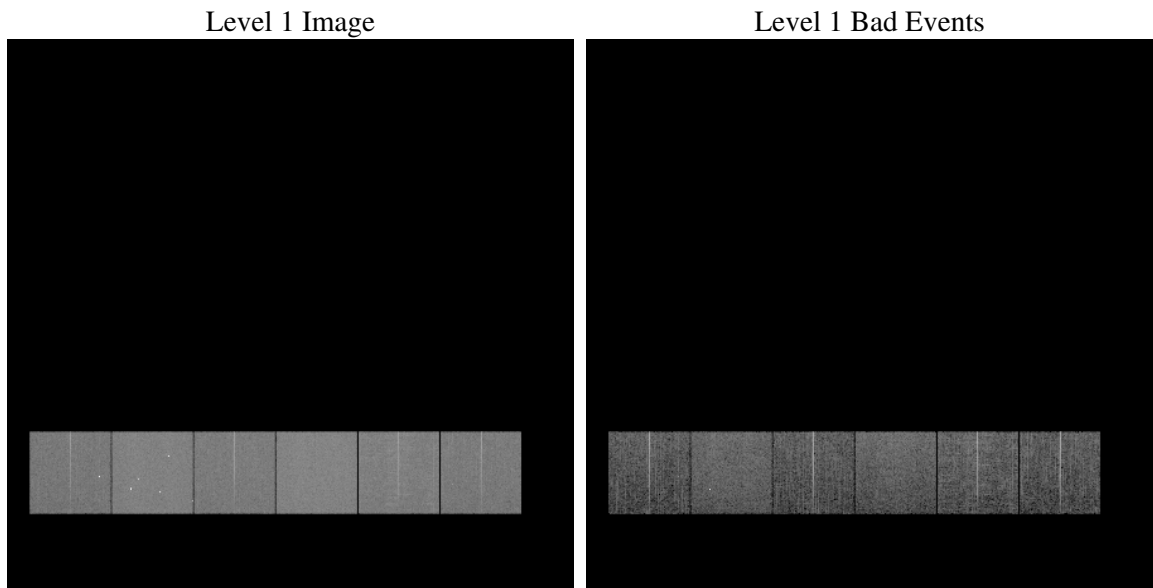
1 Front

seq_num	
obs_id	59827
title	ACIS-456789 diagnostics
observer	CHANDRA engineering request/realtime commanding
object	
dtcycle	0
cycle	P
ra_targ	0.0
dec_targ	0.0
ra_nom	125.97903324455
dec_nom	30.977753125006
roll_nom	198.15894815085
revision	2
ontime	8265.5999692082
livetime	8160.9359654513
ontime4	6466.8577796221
ontime5	8265.5999692082
ontime6	6829.8477684259
ontime7	8265.5999692082
ontime8	7176.6316524148
ontime9	6752.0639032423
l2events	1088211

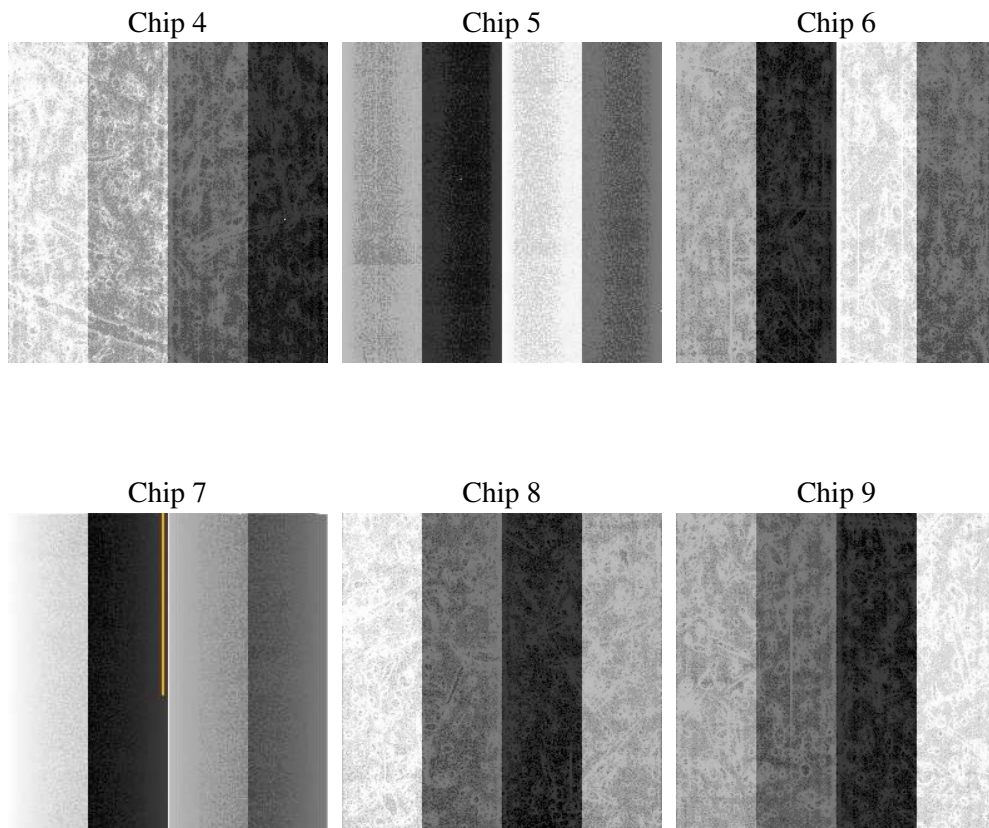
2 OBI

2.1 OBI

2.1.1 Images



2.1.2 Bias



2.1.3 Parameters

obi_num	1
ascdsver	7.6.7
caldbver	3.2.1
date	2006-02-19T22:53:54
revision	2

sched_exp_time	0.0
ontime	8267.8088036478
ontime4	6469.0666140616
ontime5	8267.8088036478
ontime6	6832.0566028655
ontime7	8267.8088036478
ontime8	7178.8404868543
ontime9	6754.2727376819
l1events	1490798

2.1.4 Events

	ccd 4	ccd 5	ccd 6	ccd 7	ccd 8	ccd 9
level 1 events	213003	274485	233963	286278	258001	225068
rejected events	49050	64220	50217	58734	57324	49430
rejected %	23%	23%	21%	20%	22%	21%

	ccd 4	ccd 5	ccd 6	ccd 7	ccd 8	ccd 9
grade 0 events	95613	25213	99699	38424	108638	96616
	44%	9%	42%	13%	42%	42%
grade 1 events	711	129	492	107	553	543
	0%	0%	0%	0%	0%	0%
grade 2 events	26040	97602	31777	68626	35159	30092
	12%	35%	13%	23%	13%	13%
grade 3 events	10870	6310	11463	16248	13050	11401
	5%	2%	4%	5%	5%	5%
grade 4 events	10841	6244	11458	15978	13173	11281
	5%	2%	4%	5%	5%	5%
grade 5 events	2915	6293	3150	6818	4016	3412
	1%	2%	1%	2%	1%	1%
grade 6 events	20682	74982	29448	88354	30741	26348
	9%	27%	12%	30%	11%	11%
grade 7 events	45331	57712	46476	51723	52671	45375
	21%	21%	19%	18%	20%	20%

2.2 Compared Parameters

Parameter	Planned	Actual	Parameter	Planned	Actual
Instrument	ACIS	ACIS	Obspar format version number	6	6
Detector	ACIS-456789	ACIS-456789	Obspar file type	PREDICTED	ACTUAL
Grating	NONE	NONE	Obspar update status	NONE	UPDATED
Data mode	FAINT	FAINT	On-chip summing requested	N	N
Observation mode	SECONDARY	SECONDARY	Subarray requested	NONE	NONE
Pointing RA	0	125.9790332445469	Alternating exposures requested	N	N
Pointing Dec	0	30.97775312500626	Primary exposure time	3.2	3.2
Pointing Roll	0.0	198.1589481508544			
SIM focus pos (mm)	-0.684267	-0.6828225247311905			
SIM defocus (mm)	0	0.8505141146731063			
SIM translation stage pos (mm)	-190.132523	250.4635187648994			
SIM translation stage offset (mm)	0	-0.007540371344731511			
Observation start time	223239100.04132	223239099.01638			
Observation start date	2005-01-27T18:51:40	2005-01-27T18:51:39			
Observation end time	223262238.392362	223262237.36742			
Observation end date	2005-01-28T01:17:18	2005-01-28T01:17:17			
Read mode	TIMED	TIMED			

2.3 Aspect

2.4 Star Slots

2.5 FID Slots

A Summary

A.1 Status

V&V Scientist	Beth Sundheim
V&V Date (YYYY-MM-DD)	2006.02.21
V&V Edition	1
V&V Disposition and Status	OK
V&V Charge Time	8.26559996

A.2 Comments