

# V&V Reference Report

## L2 ASCDS Version : 8.5.1.1

Observation 59637 - L2 Version 3  
Chandra X-Ray Center

L2 Processing Date : Dec 24 2012

## Contents

<b>1</b>	<b>Front</b>	<b>2</b>
<b>2</b>	<b>OBI</b>	<b>3</b>
2.1	OBI . . . . .	3
2.1.1	Images . . . . .	3
2.1.2	Bias . . . . .	3
2.1.3	Parameters . . . . .	4
2.1.4	Events . . . . .	4
2.2	Compared Parameters . . . . .	5
2.3	Star Slots . . . . .	6
2.4	FID Slots . . . . .	6
<b>A</b>	<b>Summary</b>	<b>7</b>
A.1	Status . . . . .	7
A.2	Comments . . . . .	7

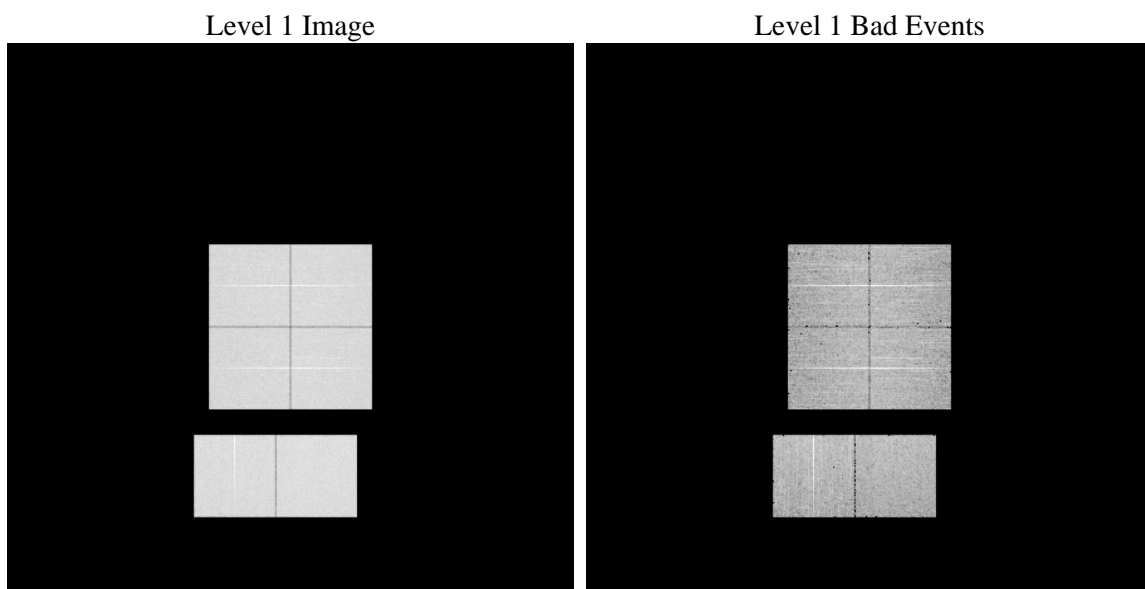
# 1 Front

seq_num	&#160	Sequence number
obs_id	59637	Observation id
title	ACIS-012367 diagnostics	Proposal title
observer	CHANDRA engineering request/realtime commanding	Principal investig
object	&#160	Source name
dtcycle	0	&#160
cycle	P	events from which exps? Prim/Second/Both
ra_targ	0.0	Observer's specified target RA [deg]
dec_targ	0.0	Observer's specified target Dec [deg]
ra_nom	238.98340142393	Nominal RA [deg]
dec_nom	2.1765725769972	Nominal Dec [deg]
roll_nom	201.56115861991	Nominal Roll [deg]
revision	3	Processing version of data
ontime	8280.4899468124	Sum of GTIs [s]
livetime	8175.6373971934	Livetime [s]
ontime0	7717.6700576842	Sum of GTIs [s]
ontime1	7873.2369515598	Sum of GTIs [s]
ontime2	7374.1264562309	Sum of GTIs [s]
ontime3	7674.3864211142	Sum of GTIs [s]
ontime6	8096.8643420935	Sum of GTIs [s]
ontime7	8280.4899468124	Sum of GTIs [s]
l2events	1105598	Number of level 2 events

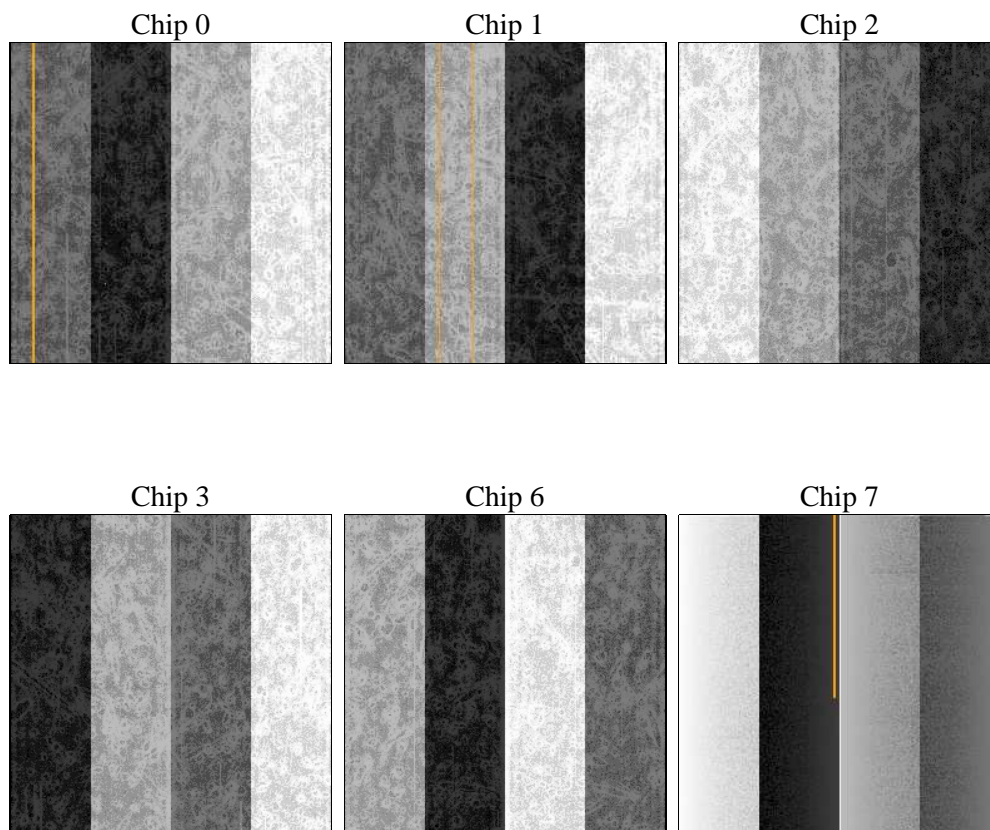
## 2 OBI

### 2.1 OBI

#### 2.1.1 Images



#### 2.1.2 Bias



### 2.1.3 Parameters

obi_num	0	Obi number	sched_exp_time	0.0	[s] Scheduled observation exposure time
ascdsver	8.5.1.1	Processing system revision	ontime	8280.4899468124	Sum of GTIs [s]
caldsver	4.5.5	&#160	ontime0	7717.6700576842	Sum of GTIs [s]
date	2012-12-24T11:51:19	Date and time of file creation	ontime1	7873.2369515598	Sum of GTIs [s]
revision	3	Processing version of data	ontime2	7374.1264562309	Sum of GTIs [s]
			ontime3	7674.3864211142	Sum of GTIs [s]
			ontime6	8096.8643420935	Sum of GTIs [s]
			ontime7	8280.4899468124	Sum of GTIs [s]
			l1events	1488713	Number of level 1 events

### 2.1.4 Events

	ccd 0	ccd 1	ccd 2	ccd 3	ccd 6	ccd 7		ccd 0	ccd 1	ccd 2	ccd 3	ccd 6	ccd 7
level 1 events	238374	242394	229832	241758	262547	273808	grade 0 events	102366	102363	100213	104373	109559	52128
rejected events	53203	53912	51887	56578	59896	51062		42%	42%	43%	43%	41%	19%
rejected %	22%	22%	22%	23%	22%	18%	grade 1 events	577	537	605	637	535	191
								0%	0%	0%	0%	0%	0%
							grade 2 events	32165	34062	29431	31077	35025	49033
								13%	14%	12%	12%	13%	17%
							grade 3 events	11934	11917	11741	12067	12667	21537
								5%	4%	5%	4%	4%	7%
							grade 4 events	11636	11968	11519	12145	12471	21675
								4%	4%	5%	5%	4%	7%
							grade 5 events	3253	3565	3062	3565	3743	8745
								1%	1%	1%	1%	1%	3%
							grade 6 events	27146	28245	25122	25518	33014	78373
								11%	11%	10%	10%	12%	28%
							grade 7 events	49297	49737	48139	52376	55533	42126
								20%	20%	20%	21%	21%	15%

## 2.2 Compared Parameters

Parameter	Planned	Actual	Parameter	Planned	Actual
Instrument	ACIS	ACIS	Obspar format version number	7	7
Detector	ACIS-012367	ACIS-012367	Obspar file type	PREDICTED	ACTUAL
Grating	NONE	NONE	Obspar update status	NONE	UPDATED
Data mode	FAINT	FAINT	On-chip summing requested	N	N
Observation mode	SECONDARY	SECONDARY	Subarray requested	NONE	NONE
[deg] Pointing RA	0	238.9834014239293	Alternating exposures requested	N	N
[deg] Pointing Dec	0	2.176572576997234	[s] Primary exposure time	3.2	3.2
[deg] Pointing Roll	0.0	201.5611586199127			
[mm] SIM focus pos	-0.782348	-0.6828225247311905			
[mm] SIM defocus	0	0.8505141146731063			
[mm] SIM translation stage pos	-233.592463	250.466033080201			
[mm] SIM translation stage offset	0	-0.01005468664627074			
[s] Observation start time (MET)	233978792.228959	233978791.20397			
Observation start date	2005-06-01T02:06:32	2005-06-01T02:06:31			
[s] Observation end time (MET)	234001042.929973	234001041.90498			
Observation end date	2005-06-01T08:17:23	2005-06-01T08:17:21			
Read mode	TIMED	TIMED			

## **2.3 Star Slots**

## **2.4 FID Slots**

## A Summary

### A.1 Status

V&V Scientist	Jen Lauer
V&V Date (YYYY-MM-DD)	2013.01.16
V&V Edition	1
V&V Disposition and Status	OK
V&V Charge Time	8.2804899468124

### A.2 Comments