

# V&V Reference Report

## L2 ASCDS Version : 7.6.7.1

Observation 59547 - L2 Version 002  
Chandra X-Ray Center

L2 Processing Date : Mar 14 2006

## Contents

<b>1</b>	<b>Front</b>	<b>2</b>
<b>2</b>	<b>OBI</b>	<b>3</b>
2.1	OBI . . . . .	3
2.1.1	Images . . . . .	3
2.1.2	Bias . . . . .	3
2.1.3	Parameters . . . . .	4
2.1.4	Events . . . . .	4
2.2	Compared Parameters . . . . .	5
2.3	Aspect . . . . .	6
2.4	Star Slots . . . . .	8
2.5	FID Slots . . . . .	8
<b>A</b>	<b>Summary</b>	<b>9</b>
A.1	Status . . . . .	9
A.2	Comments . . . . .	9

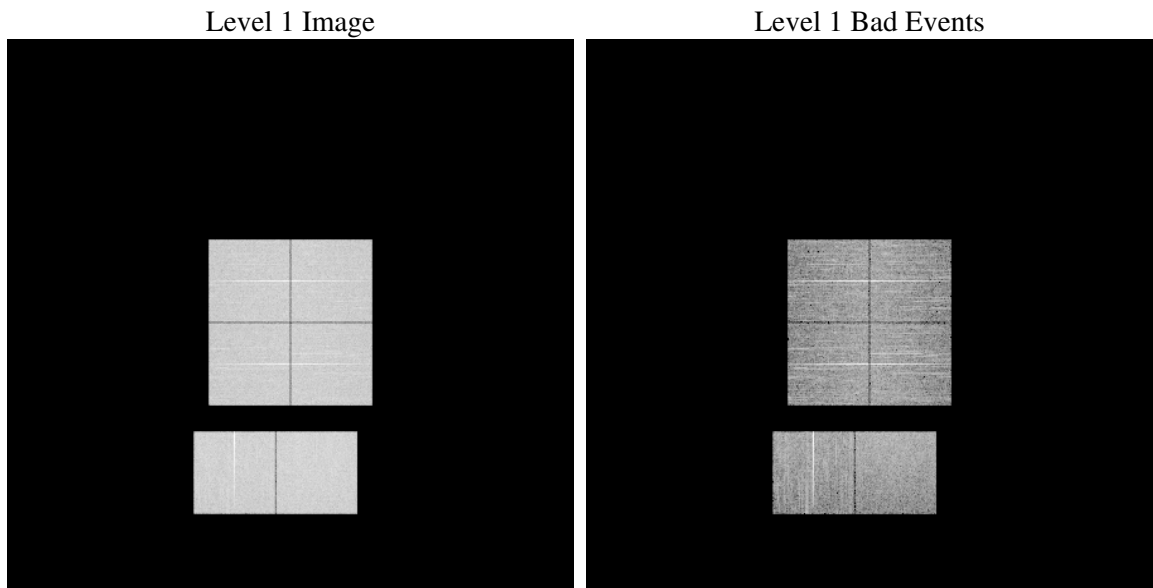
# 1 Front

seq_num	&#160
obs_id	59547
title	ACIS-012367 diagnostics
observer	CHANDRA engineering request/realtime commanding
object	&#160
dtcycle	0
cycle	P
ra_targ	0.0
dec_targ	0.0
ra_nom	297.03584410673
dec_nom	-49.580428590532
roll_nom	3.1937390966966
revision	2
ontime	8284.7999691367
livetime	8179.8928434199
ontime0	7957.4611890018
ontime1	8061.1725381315
ontime2	7795.4121742547
ontime3	7840.7855506241
ontime6	8236.1853245497
ontime7	8284.7999691367
l2events	1077788

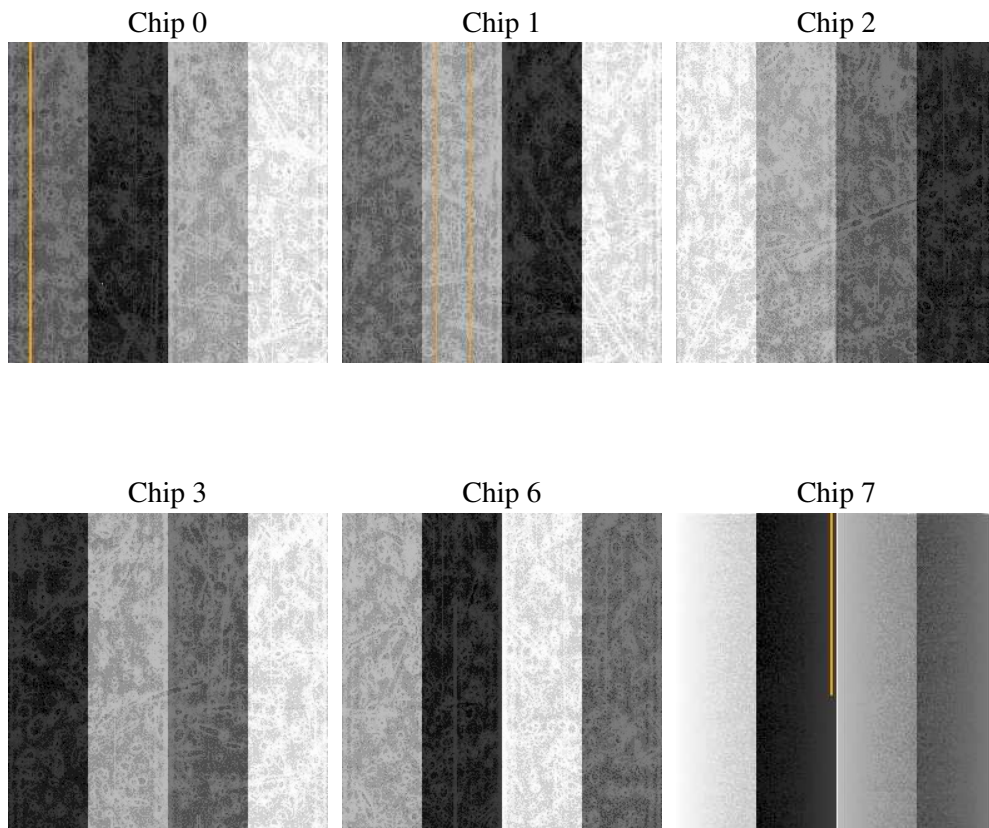
## 2 OBI

### 2.1 OBI

#### 2.1.1 Images



#### 2.1.2 Bias



### 2.1.3 Parameters

obi_num	1
ascdsver	7.6.7.1
caldbver	3.2.1
date	2006-03-14T23:32:04
revision	2

sched_exp_time	0.0
ontime	8287.2574391961
ontime0	7959.9186590612
ontime1	8063.6300081909
ontime2	7797.8696443141
ontime3	7843.2430206835
ontime6	8238.6427946091
ontime7	8287.2574391961
l1events	1486956

### 2.1.4 Events

	ccd 0	ccd 1	ccd 2	ccd 3	ccd 6	ccd 7
level 1 events	238546	241461	238136	242067	259323	267423
rejected events	55797	56384	57886	60426	61321	61178
rejected %	23%	23%	24%	24%	23%	22%

	ccd 0	ccd 1	ccd 2	ccd 3	ccd 6	ccd 7
grade 0 events	100578	100885	100832	101965	106783	33187
	42%	41%	42%	42%	41%	12%
grade 1 events	624	519	670	624	542	98
	0%	0%	0%	0%	0%	0%
grade 2 events	31831	33365	30311	30650	34603	63565
	13%	13%	12%	12%	13%	23%
grade 3 events	11999	11668	12057	11809	12269	14137
	5%	4%	5%	4%	4%	5%
grade 4 events	11684	11680	11648	11851	12200	13859
	4%	4%	4%	4%	4%	5%
grade 5 events	3453	3497	3167	3669	3830	6845
	1%	1%	1%	1%	1%	2%
grade 6 events	26725	27479	25402	25430	32147	81585
	11%	11%	10%	10%	12%	30%
grade 7 events	51652	52368	54049	56069	56949	54147
	21%	21%	22%	23%	21%	20%

## 2.2 Compared Parameters

Parameter	Planned	Actual	Parameter	Planned	Actual
Instrument	ACIS	ACIS	Obspar format version number	6	6
Detector	ACIS-012367	ACIS-012367	Obspar file type	PREDICTED	ACTUAL
Grating	NONE	NONE	Obspar update status	NONE	UPDATED
Data mode	FAINT	FAINT	On-chip summing requested	N	N
Observation mode	SECONDARY	SECONDARY	Subarray requested	NONE	NONE
Pointing RA	0	297.0358441067299	Alternating exposures requested	N	N
Pointing Dec	0	-49.58042859053158	Primary exposure time	3.2	3.2
Pointing Roll	0.0	3.193739096696639			
SIM focus pos (mm)	-0.782348	-0.6828225247311905			
SIM defocus (mm)	0	0.8505141146731063			
SIM translation stage pos (mm)	-233.592463	250.466033080201			
SIM translation stage offset (mm)	0	-0.01005468664627074			
Observation start time	237861810.156355	237861809.13137			
Observation start date	2005-07-16T00:43:30	2005-07-16T00:43:29			
Observation end time	237885752.10745	237885751.08246			
Observation end date	2005-07-16T07:22:32	2005-07-16T07:22:31			
Read mode	TIMED	TIMED			

## 2.3 Aspect



## **2.4 Star Slots**

## **2.5 FID Slots**

## A Summary

### A.1 Status

V&V Scientist	Jen Lauer
V&V Date (YYYY-MM-DD)	2006.03.15
V&V Edition	1
V&V Disposition and Status	OK
V&V Charge Time	8.28479996

### A.2 Comments