

V&V Reference Report

L2 ASCDS Version : 7.6.7.1

Observation 5947 - L2 Version 002
Chandra X-Ray Center

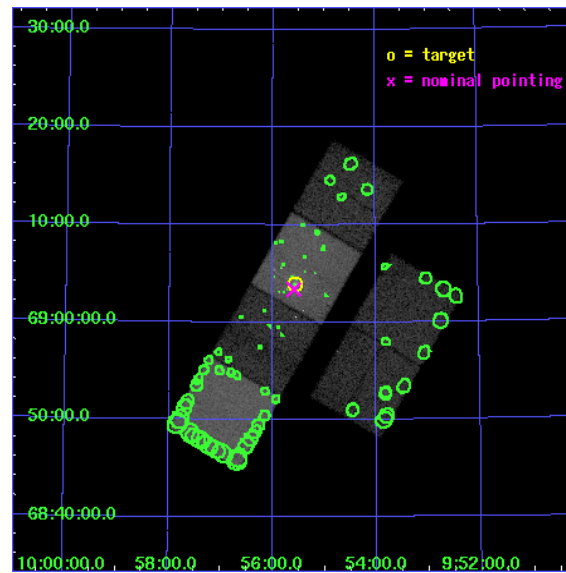
L2 Processing Date : Mar 11 2006

Contents

1	Front	2
2	OBI	3
2.1	OBI	3
2.1.1	Images	3
2.1.2	Bias	3
2.1.3	Parameters	4
2.1.4	Events	4
2.2	Compared Parameters	5
2.3	Aspect	6
2.4	Star Slots	9
2.4.1	Slot 3	9
2.4.2	Slot 4	10
2.4.3	Slot 5	11
2.4.4	Slot 6	12
2.4.5	Slot 7	13
2.5	FID Slots	14
2.5.1	Slot 0	14
2.5.2	Slot 1	15
2.5.3	Slot 2	16
3	Point Sources	17
A	Summary	18
A.1	Status	18
A.2	Comments	18

1 Front

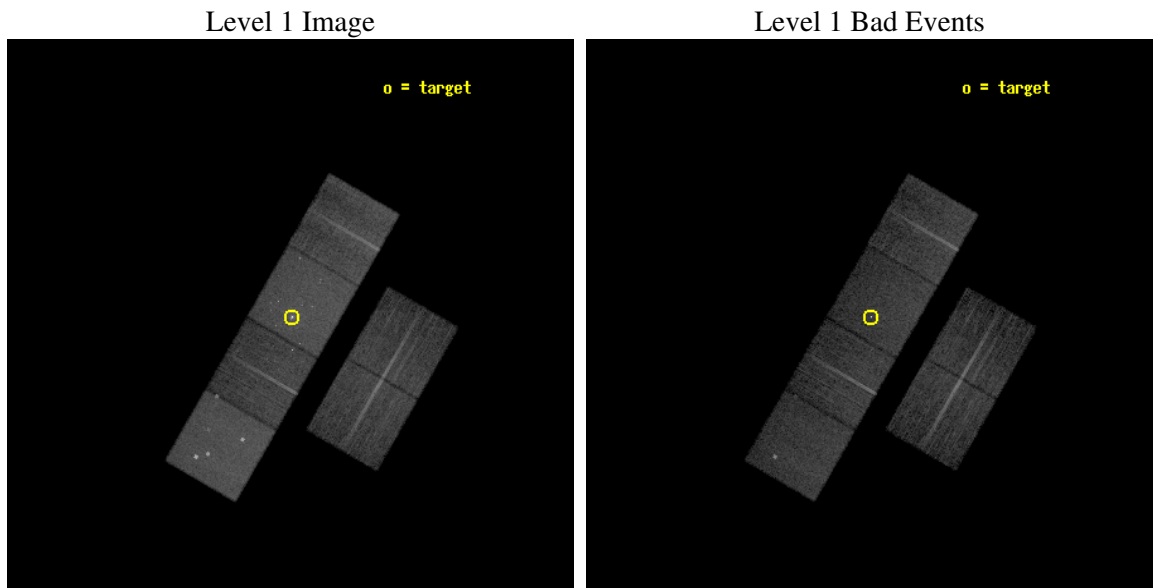
seq_num	600466
obs_id	5947
title	An Unprecedented View of a Galaxy's Dynamic X-ray Source Population
observer	Dr. David Pooley
object	M81
dtcycle	0
cycle	P
ra_targ	148.888333
dec_targ	69.065306
ra_nom	148.89757985261
dec_nom	69.056201910083
roll_nom	300.03657779558
revision	2
ontime	10835.199959636
livetime	10697.998133573
ontime2	10835.199959636
ontime3	10835.199959636
ontime5	10835.199959636
ontime6	10835.199959636
ontime7	10835.199959636
ontime8	10831.958969355
l2events	207991



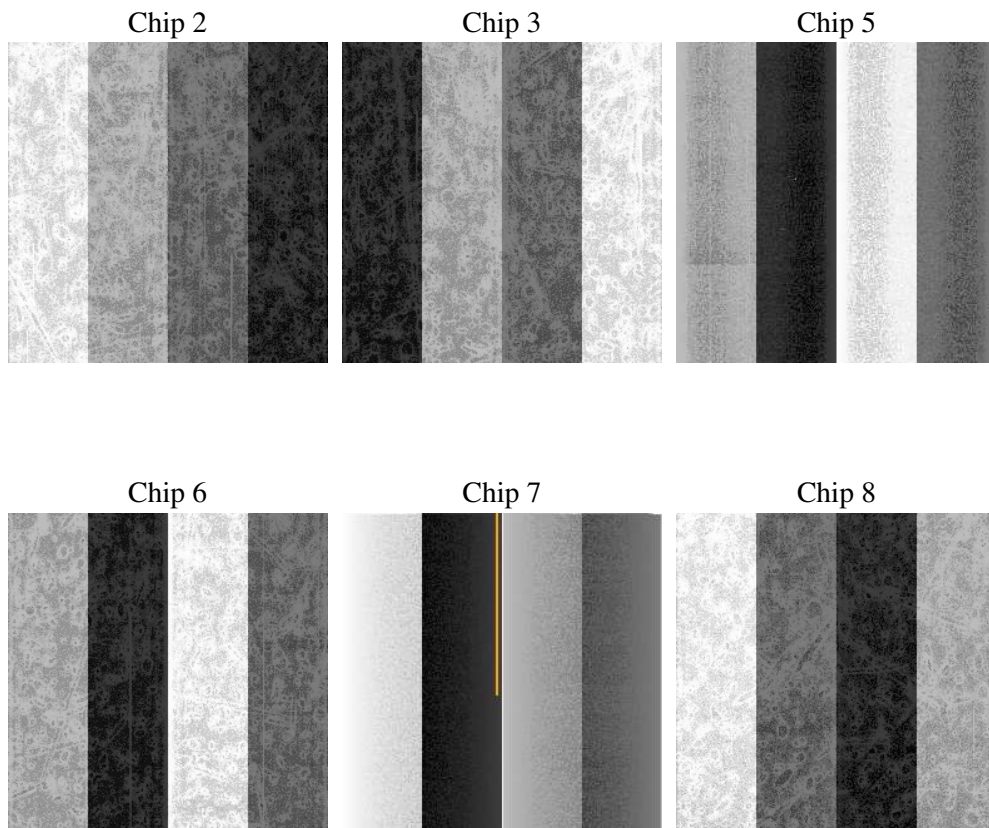
2 OBI

2.1 OBI

2.1.1 Images



2.1.2 Bias



2.1.3 Parameters

obi_num	0
ascdsver	7.6.7.1
caldbver	3.2.1
date	2006-03-11T23:16:43
revision	2

sched_exp_time	11081.997000
ontime	10841.156835407
ontime2	10841.156855315
ontime3	10841.156855315
ontime5	10841.156835407
ontime6	10841.156855315
ontime7	10841.156835407
ontime8	10837.915775508
l1events	705593

2.1.4 Events

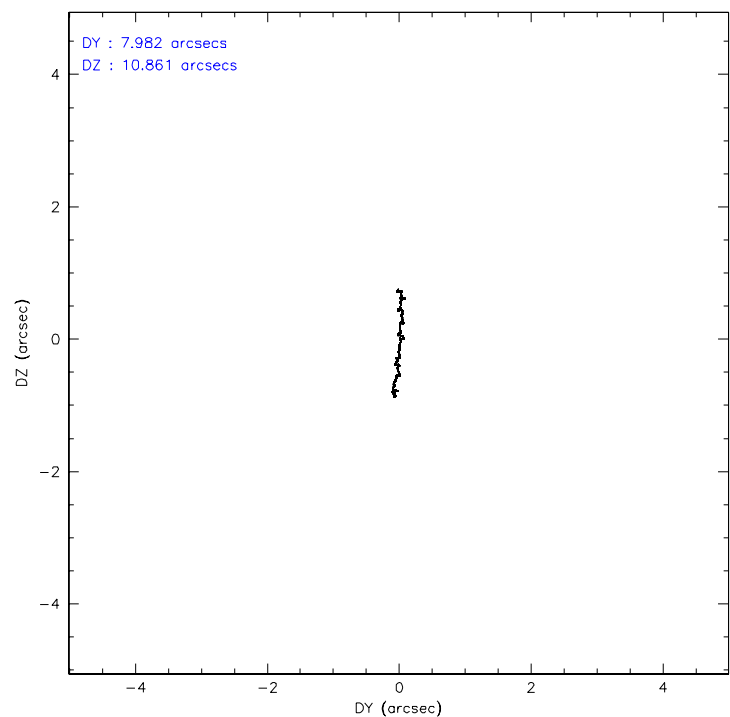
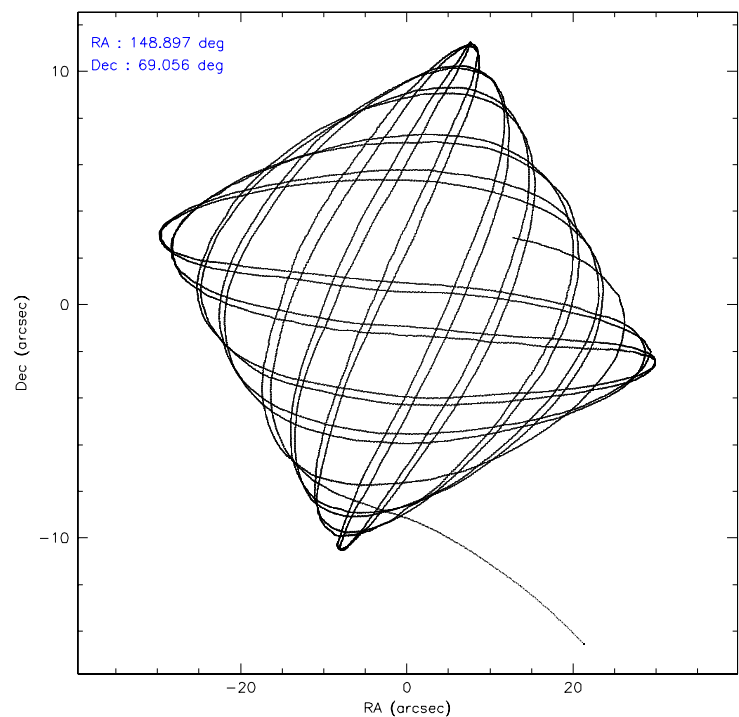
	ccd 2	ccd 3	ccd 5	ccd 6	ccd 7	ccd 8
level 1 events	95960	90082	152022	98946	147962	120621
rejected events	77270	71802	75301	77868	78748	88048
rejected %	80%	79%	49%	78%	53%	72%

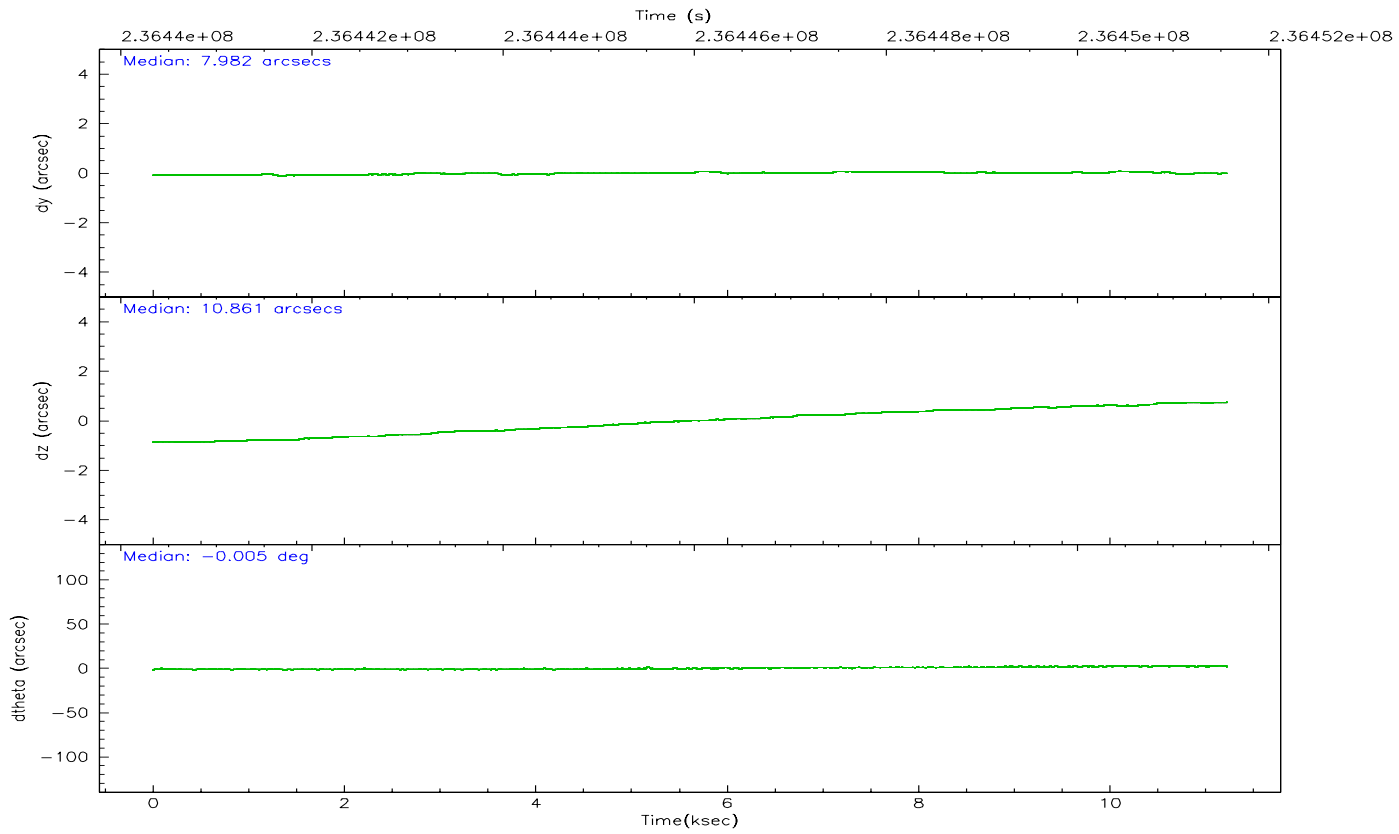
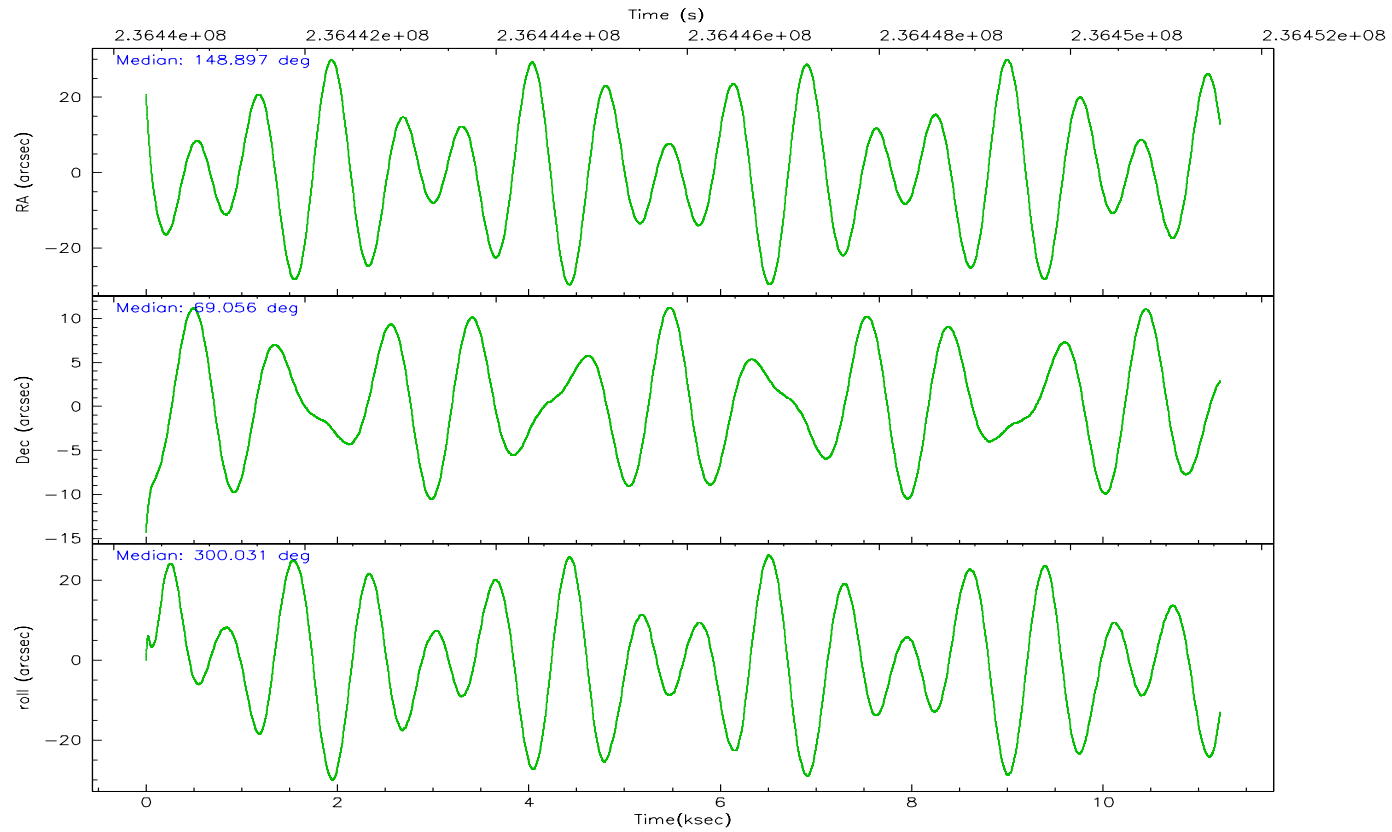
	ccd 2	ccd 3	ccd 5	ccd 6	ccd 7	ccd 8
grade 0 events	11463	11113	9035	12593	5737	14878
	11%	12%	5%	12%	3%	12%
grade 1 events	106	111	246	92	122	113
	0%	0%	0%	0%	0%	0%
grade 2 events	2911	2717	23700	3347	16404	5862
	3%	3%	15%	3%	11%	4%
grade 3 events	1186	1208	1709	1364	3664	2851
	1%	1%	1%	1%	2%	2%
grade 4 events	1210	1216	1599	1330	3653	2727
	1%	1%	1%	1%	2%	2%
grade 5 events	3448	3798	6508	4091	7874	5138
	3%	4%	4%	4%	5%	4%
grade 6 events	1927	2029	40705	2450	39772	6259
	2%	2%	26%	2%	26%	5%
grade 7 events	73709	67890	68520	73679	70736	82793
	76%	75%	45%	74%	47%	68%

2.2 Compared Parameters

Parameter	Planned	Actual	Parameter	Planned	Actual
Instrument	ACIS	ACIS	Obspar format version number	6	6
Detector	ACIS-235678	ACIS-235678	Obspar file type	PREDICTED	ACTUAL
Grating	NONE	NONE	Obspar update status	NONE	UPDATED
Data mode	FAINT	FAINT	On-chip summing requested	N	N
Observation mode	POINTING	POINTING	Subarray requested	NONE	NONE
Pointing RA	148.831014	148.8975798526083	Alternating exposures requested	N	N
Pointing Dec	69.069461	69.05620191008342	Primary exposure time	0.000000	3.2
Pointing Roll	299.942099	300.0365777955778			
SIM focus pos (mm)	-0.684267	-0.6828225247311905			
SIM defocus (mm)	0	0.001444936568705701			
SIM translation stage pos (mm)	-190.132523	-190.1425803651734			
SIM translation stage offset (mm)	0	0.01005778216563158			
Observation start time	236440480.184000	236439281.2663			
Observation start date	2005-06-29T13:53:36	2005-06-29T13:34:41			
Observation end time	236451562.184000	236451788.82937			
Observation end date	2005-06-29T16:58:18	2005-06-29T17:03:08			
Read mode	TIMED	TIMED			

2.3 Aspect



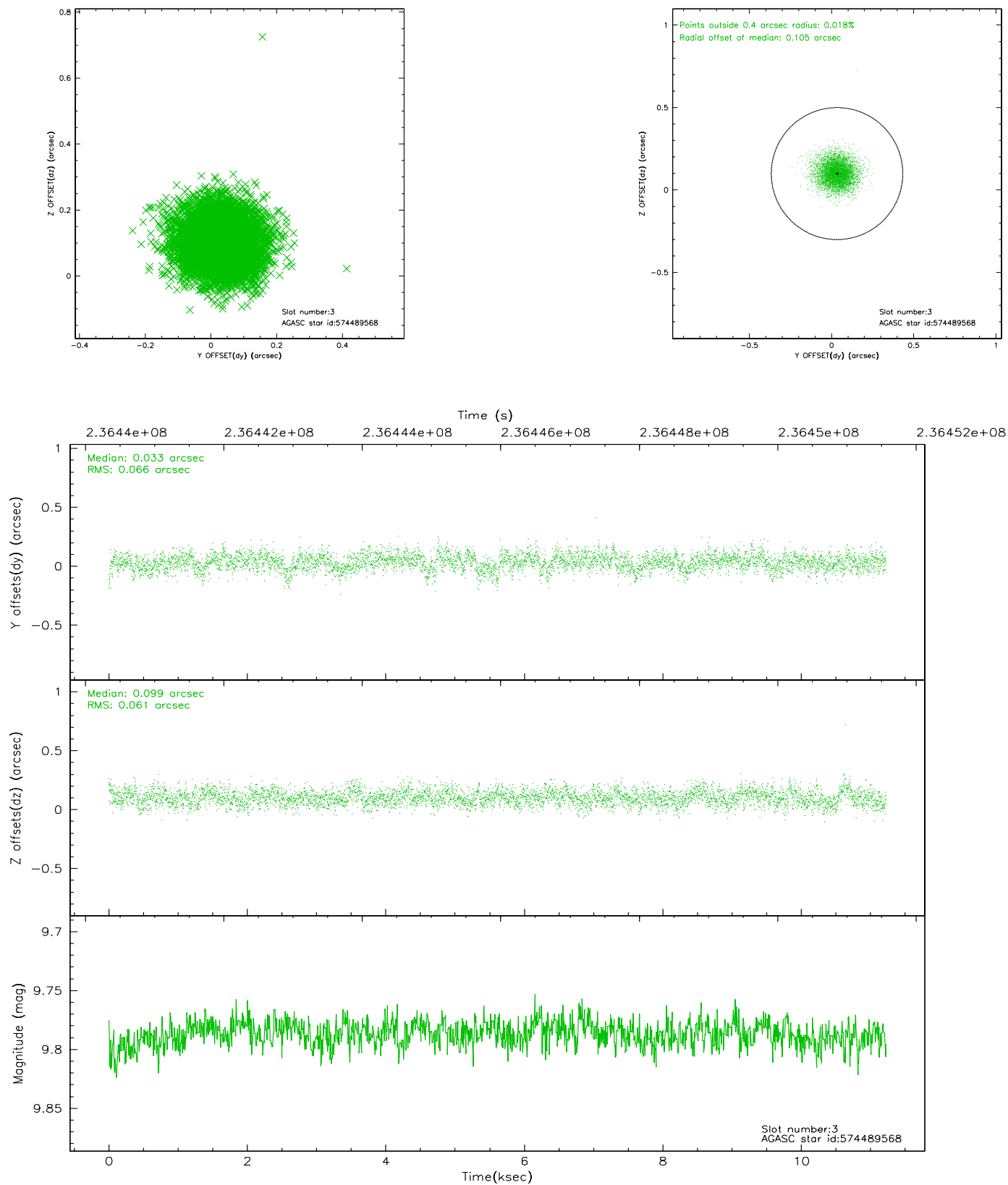


Slot Statistics

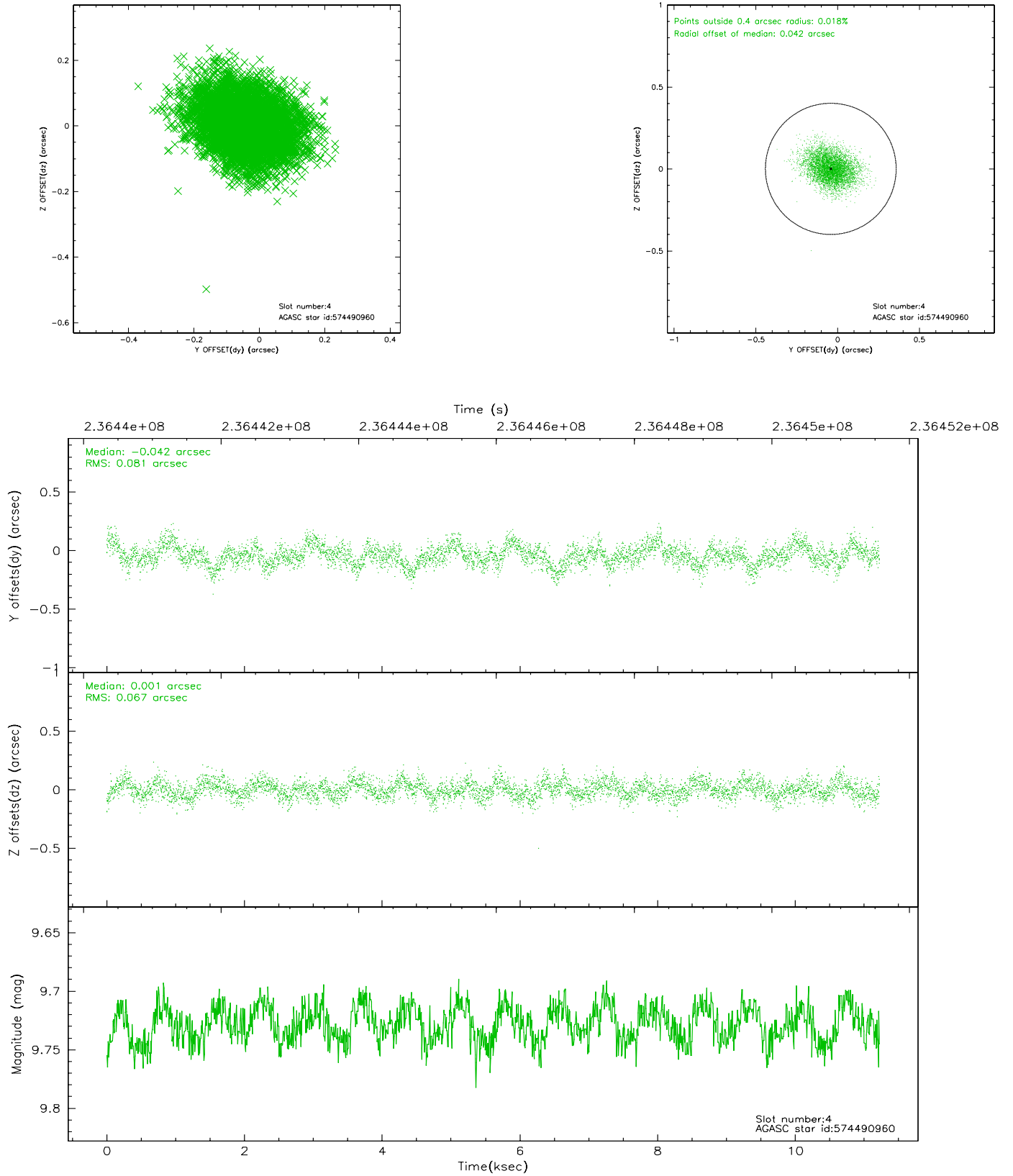
slot	status	id	mag	n_pts	med_dy	med_dz	dr1	dr2	ra	dec	mean_y	mean_z
0	FID	ACIS-S-1	7.19	2738	0.010	-0.049	0.022	0.039	0.000000	0.000000	935.29	-1727.71
1	FID	ACIS-S-4	7.21	2738	0.052	0.033	0.016	0.026	0.000000	0.000000	2152.99	176.06
2	FID	ACIS-S-5	7.23	2738	-0.090	0.028	0.011	0.016	0.000000	0.000000	-1813.10	170.15
3	GUIDE	574489568	9.79	5468	0.033	0.099	0.095	0.156	147.223974	69.438157	-2186.84	-1084.37
4	GUIDE	574490960	9.73	5470	-0.042	0.001	0.112	0.184	148.185918	69.658768	-2245.04	361.43
5	GUIDE	574491280	9.34	5407	-0.021	-0.045	0.096	0.153	148.611567	69.450135	-1326.37	443.46
6	GUIDE	574497600	10.45	5470	0.093	-0.085	0.161	0.265	147.824120	68.451903	1252.99	-2257.33
7	GUIDE	574491184	9.06	5474	-0.066	0.026	0.085	0.135	148.582453	69.768699	-2335.94	988.54

2.4 Star Slots

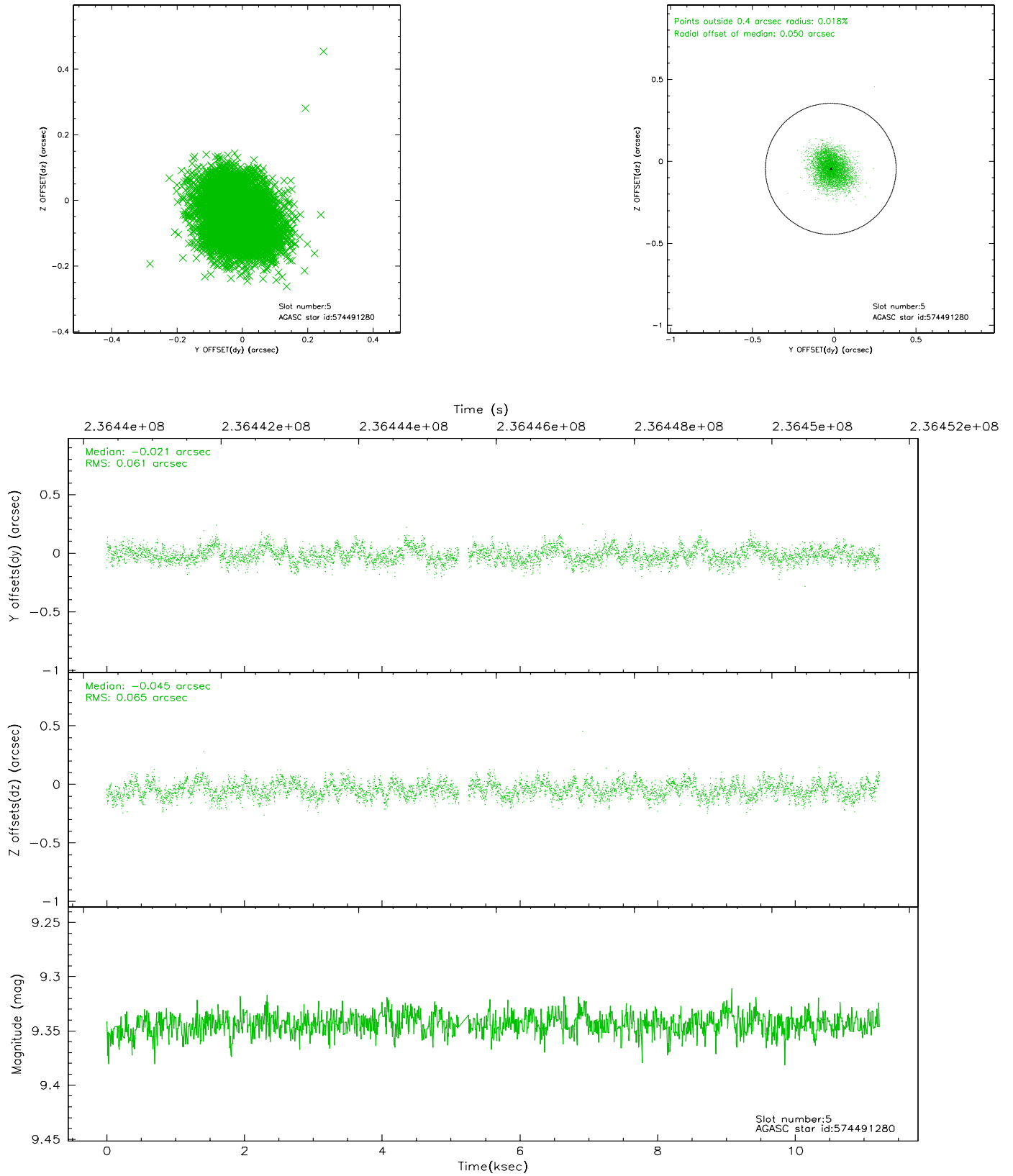
2.4.1 Slot 3



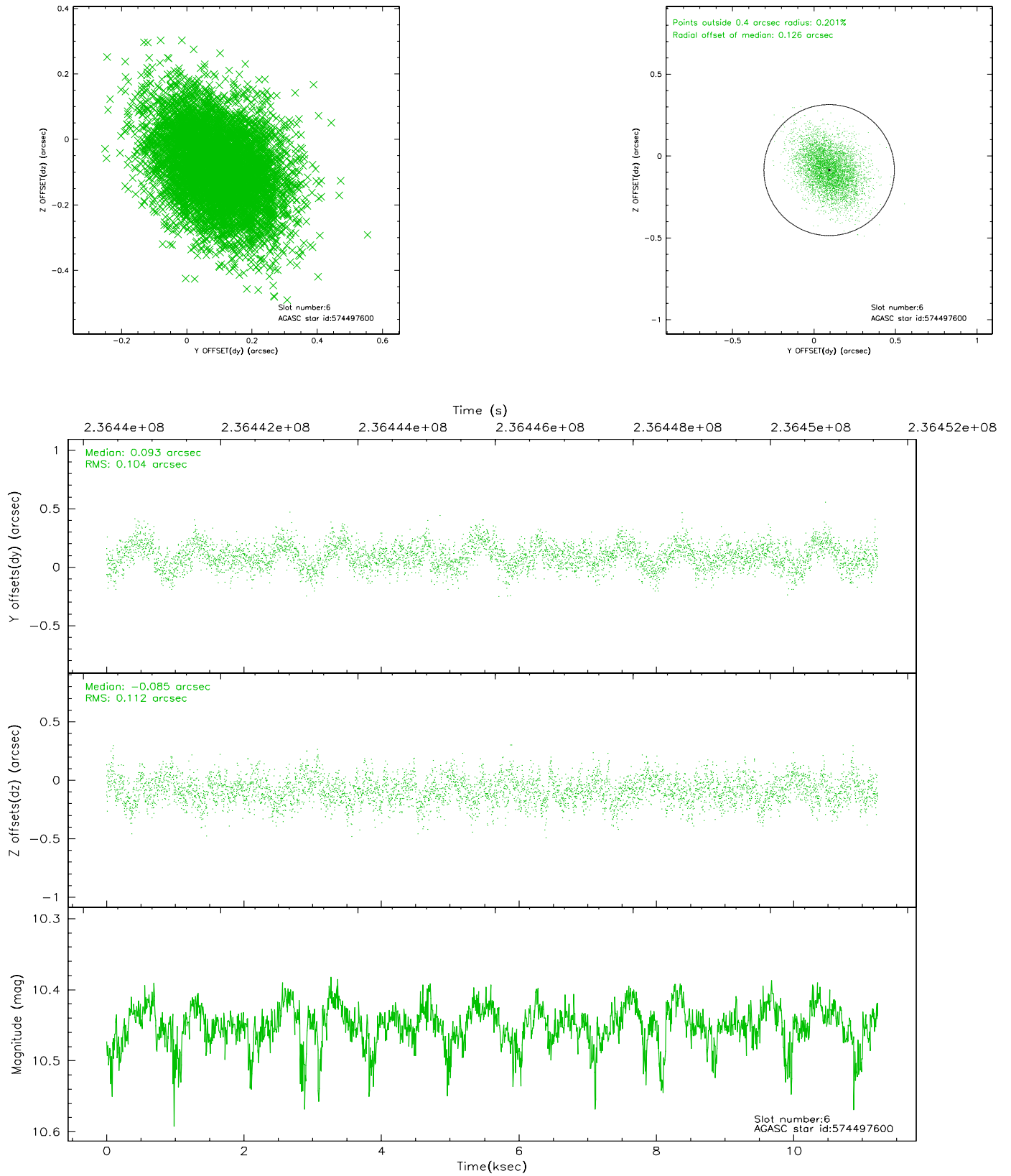
2.4.2 Slot 4



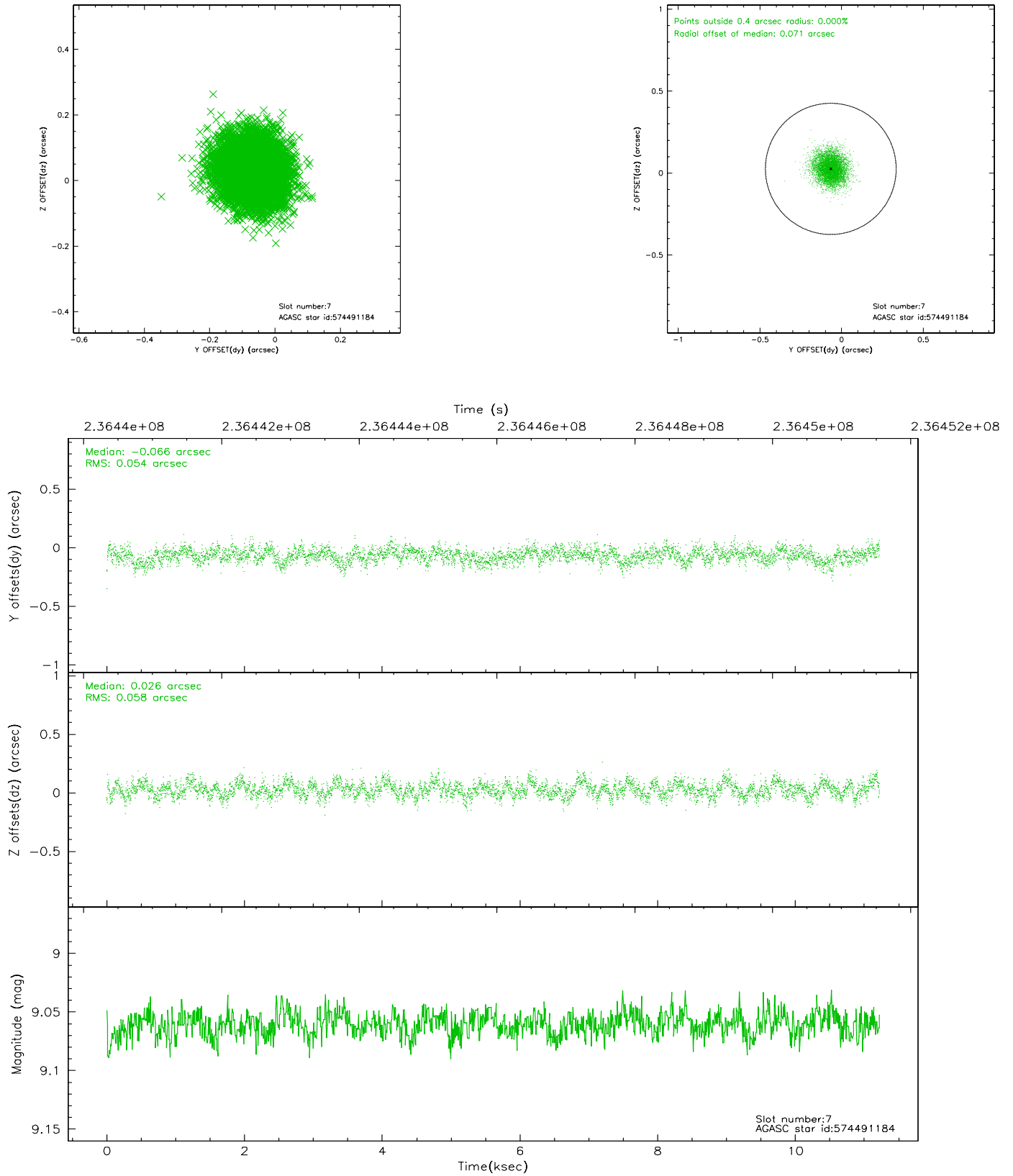
2.4.3 Slot 5



2.4.4 Slot 6

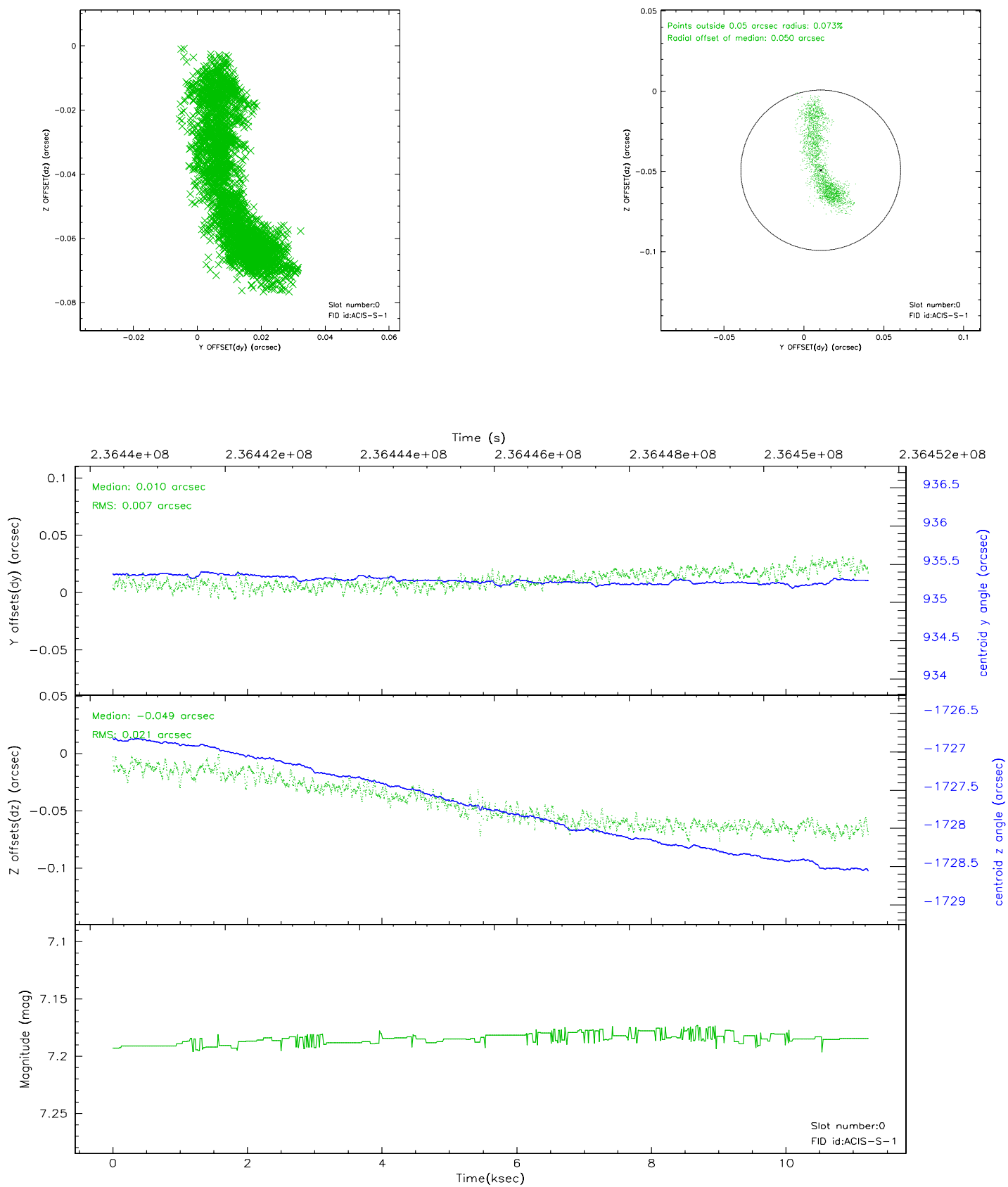


2.4.5 Slot 7

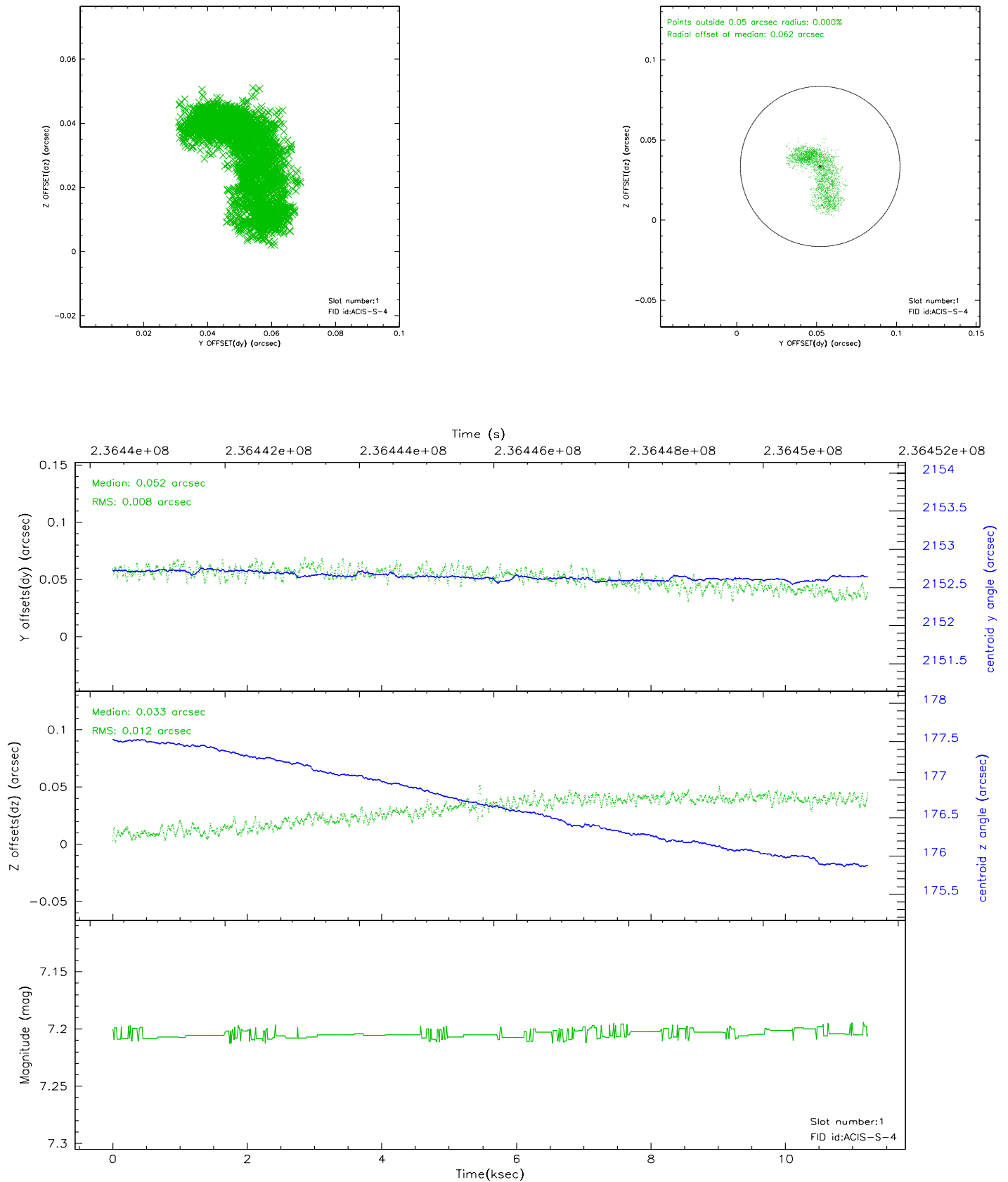


2.5 FID Slots

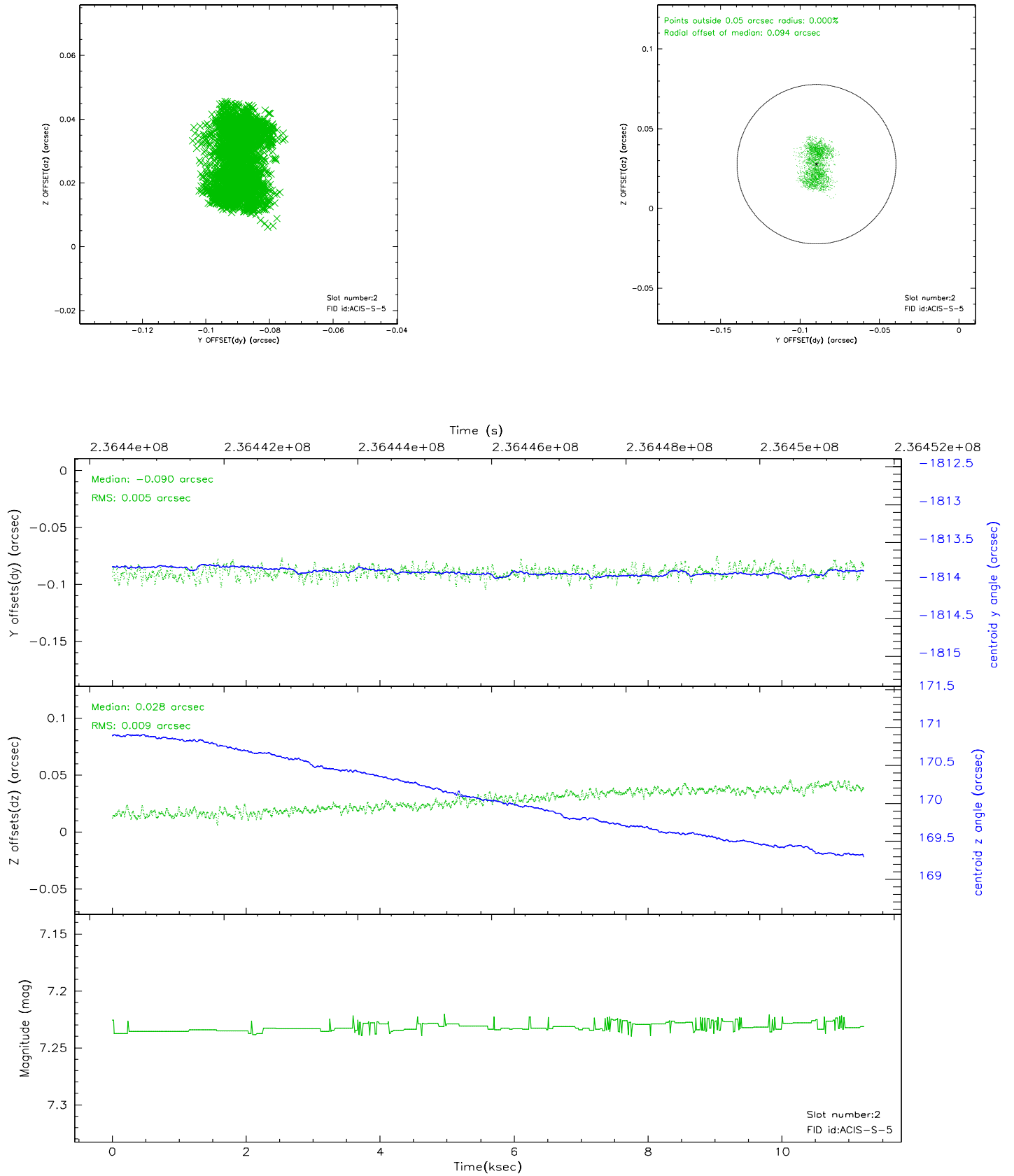
2.5.1 Slot 0



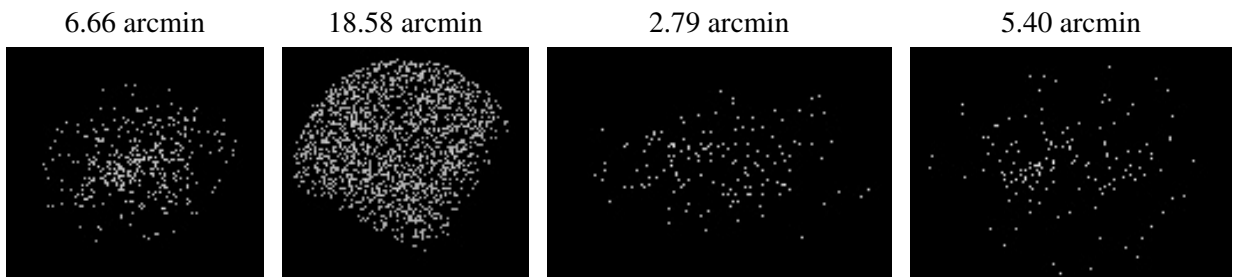
2.5.2 Slot 1



2.5.3 Slot 2



3 Point Sources



A Summary

A.1 Status

V&V Scientist	Beth Sundheim
V&V Date (YYYY-MM-DD)	2006.03.13
V&V Edition	1
V&V Disposition and Status	OK
V&V Charge Time	10.83519

A.2 Comments