

V&V Reference Report

L2 ASCDS Version : 8.5.1.1

Observation 59427 - L2 Version 4
Chandra X-Ray Center

L2 Processing Date : Mar 8 2013

Contents

1	Front	2
2	OBI	3
2.1	OBI	3
2.1.1	Images	3
2.1.2	Bias	3
2.1.3	Parameters	4
2.1.4	Events	4
2.2	Compared Parameters	5
2.3	Star Slots	6
2.4	FID Slots	6
A	Summary	7
A.1	Status	7
A.2	Comments	7

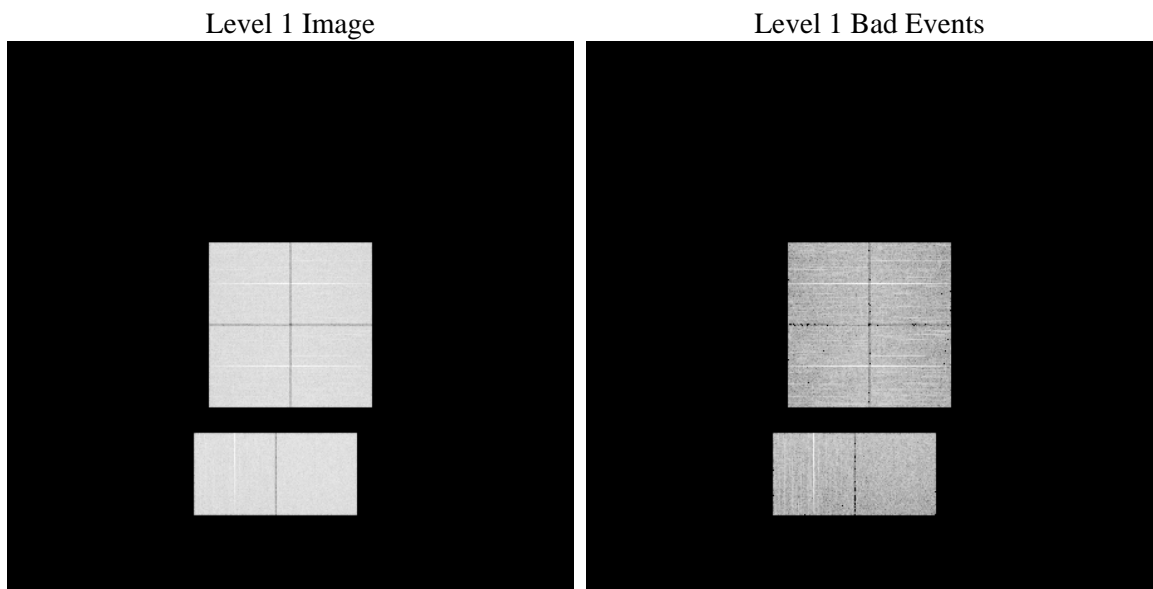
1 Front

seq_num	 	Sequence number
obs_id	59427	Observation id
title	ACIS-012367 diagnostics	Proposal title
observer	CHANDRA engineering request/realtime commanding	Principal investig
object	 	Source name
dtcycle	0	
cycle	P	events from which exps? Prim/Second/Both
ra_targ	0.0	Observer's specified target RA [deg]
dec_targ	0.0	Observer's specified target Dec [deg]
ra_nom	358.98366574584	Nominal RA [deg]
dec_nom	19.475957839969	Nominal Dec [deg]
roll_nom	204.74652210734	Nominal Roll [deg]
revision	4	Processing version of data
ontime	7806.6338261962	Sum of GTIs [s]
livetime	7707.7815280983	Livetime [s]
ontime0	7806.5927861929	Sum of GTIs [s]
ontime1	7803.3107759058	Sum of GTIs [s]
ontime2	7806.5107061863	Sum of GTIs [s]
ontime3	7806.6748661995	Sum of GTIs [s]
ontime6	7806.4696662128	Sum of GTIs [s]
ontime7	7806.6338261962	Sum of GTIs [s]
l2events	1009842	Number of level 2 events

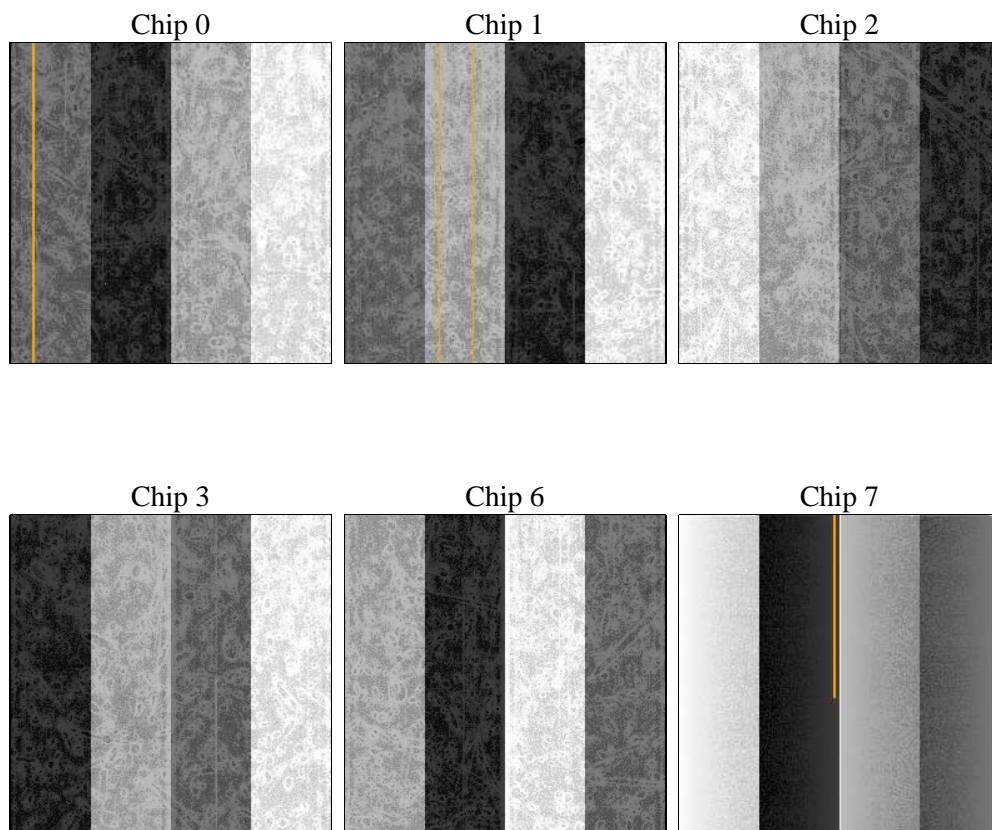
2 OBI

2.1 OBI

2.1.1 Images



2.1.2 Bias



2.1.3 Parameters

obi_num	0	Obi number	sched_exp_time	0.0	[s] Scheduled observation exposure time
ascdsver	8.5.1.1	Processing system revision	ontime	7806.6338261962	Sum of GTIs [s]
caldsver	4.5.6	 	ontime0	7806.5927861929	Sum of GTIs [s]
date	2013-03-08T21:07:18	Date and time of file creation	ontime1	7803.3107759058	Sum of GTIs [s]
revision	4	Processing version of data	ontime2	7806.5107061863	Sum of GTIs [s]
			ontime3	7806.6748661995	Sum of GTIs [s]
			ontime6	7806.4696662128	Sum of GTIs [s]
			ontime7	7806.6338261962	Sum of GTIs [s]
			l1events	1376811	Number of level 1 events

2.1.4 Events

	ccd 0	ccd 1	ccd 2	ccd 3	ccd 6	ccd 7		ccd 0	ccd 1	ccd 2	ccd 3	ccd 6	ccd 7
level 1 events	221858	222849	226593	228638	233949	242924	grade 0 events	93346	93493	95678	96006	96729	46008
rejected events	51698	50832	54305	55501	54461	47595		42%	41%	42%	41%	41%	18%
rejected %	23%	22%	23%	24%	23%	19%	grade 1 events	528	491	627	620	518	177
								0%	0%	0%	0%	0%	0%
							grade 2 events	29996	30902	29565	30051	31196	42414
								13%	13%	13%	13%	13%	17%
							grade 3 events	10925	11013	11454	11494	11287	19498
								4%	4%	5%	5%	4%	8%
							grade 4 events	11004	11175	11290	11477	11192	19498
								4%	5%	4%	5%	4%	8%
							grade 5 events	3246	3362	3048	3596	3463	8328
								1%	1%	1%	1%	1%	3%
							grade 6 events	24889	25434	24301	24109	29084	67911
								11%	11%	10%	10%	12%	27%
							grade 7 events	47924	46979	50630	51285	50480	39090
								21%	21%	22%	22%	21%	16%

2.2 Compared Parameters

Parameter	Planned	Actual	Parameter	Planned	Actual
Instrument	ACIS	ACIS	Obspar format version number	7	7
Detector	ACIS-012367	ACIS-012367	Obspar file type	PREDICTED	ACTUAL
Grating	NONE	NONE	Obspar update status	NONE	UPDATED
Data mode	FAINT	FAINT	On-chip summing requested	N	N
Observation mode	SECONDARY	SECONDARY	Subarray requested	NONE	NONE
[deg] Pointing RA	0	358.983665745842	Alternating exposures requested	N	N
[deg] Pointing Dec	0	19.4759578399689	[s] Primary exposure time	3.2	3.2
[deg] Pointing Roll	0.0	204.7465221073423			
[mm] SIM focus pos	-0.782348	-0.7809083437167272			
[mm] SIM defocus	0	0.7524282956875696			
[mm] SIM translation stage pos	-233.592463	250.466033080201			
[mm] SIM translation stage offset	0	-0.01005468664627074			
[s] Observation start time (MET)	244448562.958576	244448561.93357			
Observation start date	2005-09-30T06:22:43	2005-09-30T06:22:41			
[s] Observation end time (MET)	244466272.909391	244466271.88438			
Observation end date	2005-09-30T11:17:53	2005-09-30T11:17:51			
Read mode	TIMED	TIMED			

2.3 Star Slots

2.4 FID Slots

A Summary

A.1 Status

V&V Scientist	Jen Lauer
V&V Date (YYYY-MM-DD)	2013.03.11
V&V Edition	1
V&V Disposition and Status	OK
V&V Charge Time	7.8066338261962

A.2 Comments

As a consequence of the DEA-A shutdown anomaly on Sep 15th (DOY258), the reported value of the ACIS FP temperature was ~1.3 degrees warmer than the actual temperature. The value for FP temperature reported in the headers of the Level 2 event file and the Mission Timeline files are incorrect by this amount for this processing. However, the temperature is corrected in the processing in order to obtain the correct temperature for the CTI correction. So the calibrated data are correct. If using the FP temp values in the headers of data files (some CIAO tools require this information), investigators should subtract 1.3 degrees from the reported temperature to determine the true temperature.