

V&V Reference Report

L2 ASCDS Version : 8.5.1.1

Observation 5937 - L2 Version 3
Chandra X-Ray Center

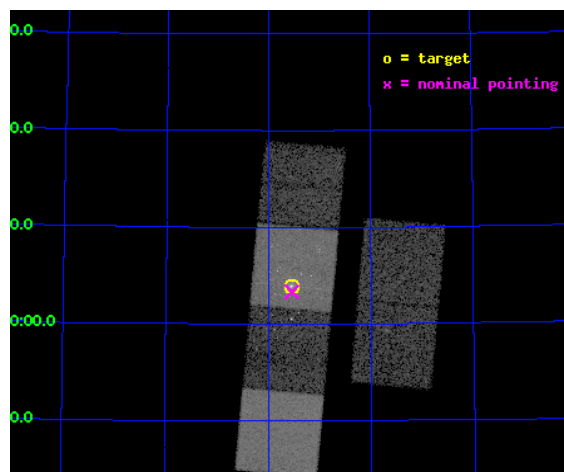
L2 Processing Date : Dec 24 2012

Contents

1	Front	2
2	OBI	3
2.1	OBI	3
2.1.1	Images	3
2.1.2	Bias	3
2.1.3	Parameters	4
2.1.4	Events	4
2.2	Compared Parameters	5
2.3	Aspect	6
2.4	Star Slots	9
2.4.1	Slot 3	9
2.4.2	Slot 4	10
2.4.3	Slot 5	11
2.4.4	Slot 6	12
2.4.5	Slot 7	13
2.5	FID Slots	14
2.5.1	Slot 0	14
2.5.2	Slot 1	15
2.5.3	Slot 2	16
A	Summary	17
A.1	Status	17
A.2	Comments	17

1 Front

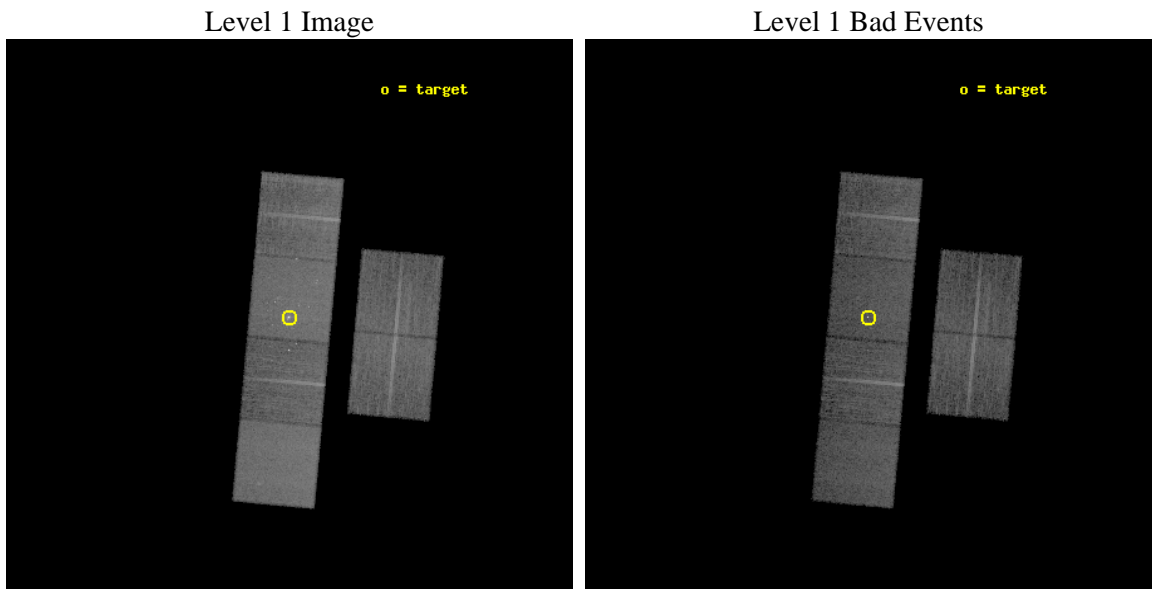
seq_num	600456	Sequence number
obs_id	5937	Observation id
title	An Unprecedented View of a Galaxy's Dynamic X-ray Source Population	
observer	Prof. David Pooley	Principal investigator
object	M81	Source name
dtcycle	0	
cycle	P	events from which exps? Prim/Second/Both
ra_targ	148.888333	Observer's specified target RA [deg]
dec_targ	69.065306	Observer's specified target Dec [deg]
ra_nom	148.88607243776	Nominal RA [deg]
dec_nom	69.05568110672	Nominal Dec [deg]
roll_nom	275.15875181726	Nominal Roll [deg]
revision	3	Processing version of data
ontime	12159.9999547	Sum of GTIs [s]
livetime	12006.022713401	Livetime [s]
ontime2	12159.9999547	Sum of GTIs [s]
ontime3	12159.9999547	Sum of GTIs [s]
ontime5	12159.9999547	Sum of GTIs [s]
ontime6	12159.9999547	Sum of GTIs [s]
ontime7	12159.9999547	Sum of GTIs [s]
ontime8	12159.9999547	Sum of GTIs [s]
l2events	153588	Number of level 2 events



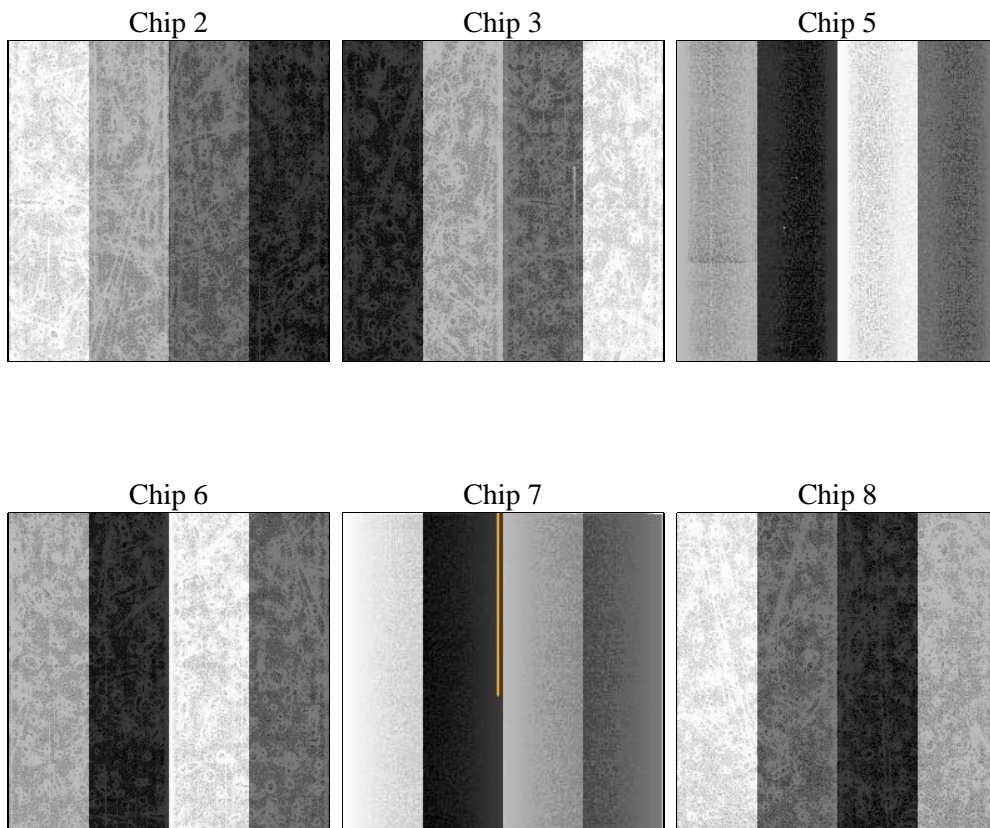
2 OBI

2.1 OBI

2.1.1 Images



2.1.2 Bias



2.1.3 Parameters

obi_num	0	Obi number	sched_exp_time	12000.000000	[s] Scheduled observation exposure time
ascdsver	8.5.1.1	Processing system revision	ontime	12159.9999547	Sum of GTIs [s]
caldsver	4.5.5	 	ontime2	12159.9999547	Sum of GTIs [s]
date	2012-12-24T11:17:51	Date and time of file creation	ontime3	12159.9999547	Sum of GTIs [s]
revision	3	Processing version of data	ontime5	12159.9999547	Sum of GTIs [s]
			ontime6	12159.9999547	Sum of GTIs [s]
			ontime7	12159.9999547	Sum of GTIs [s]
			ontime8	12159.9999547	Sum of GTIs [s]
			l1events	654626	Number of level 1 events

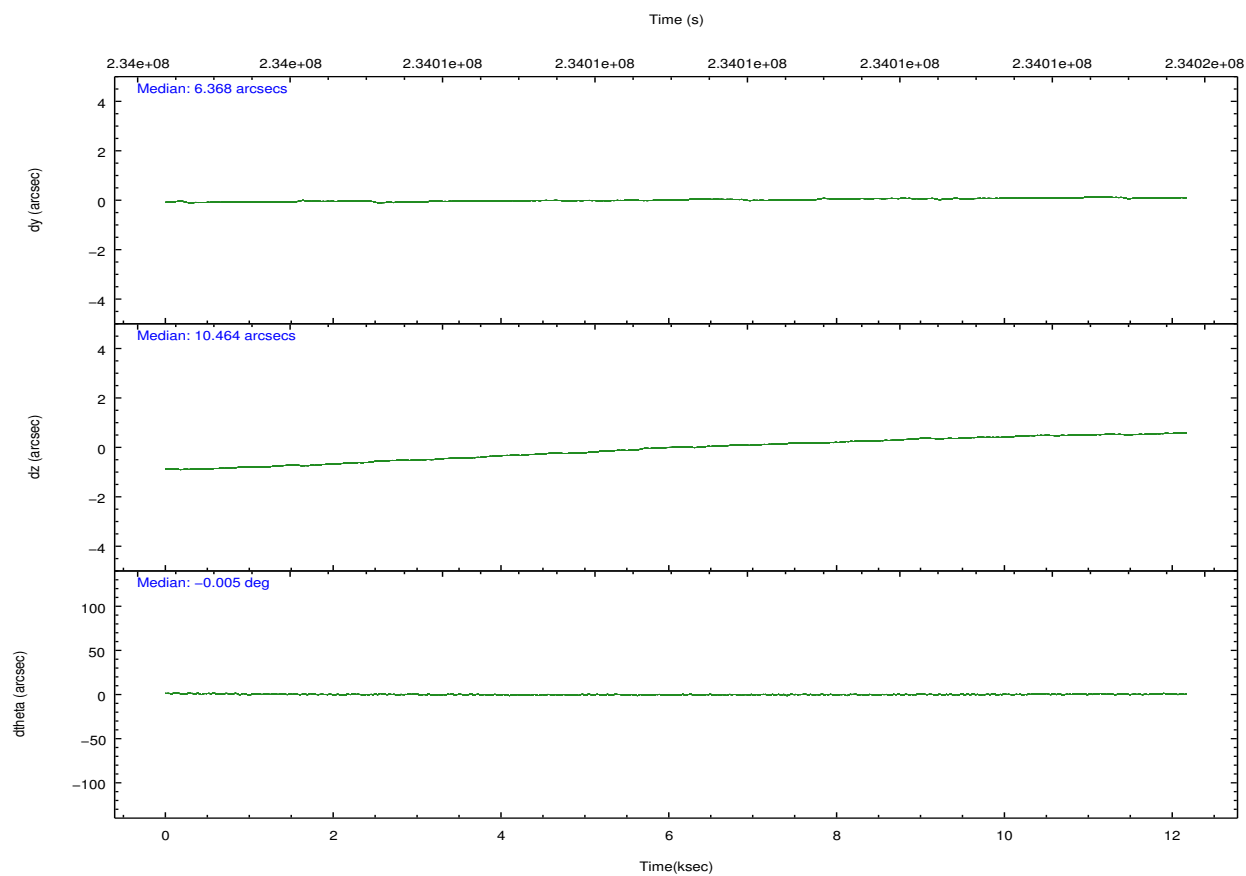
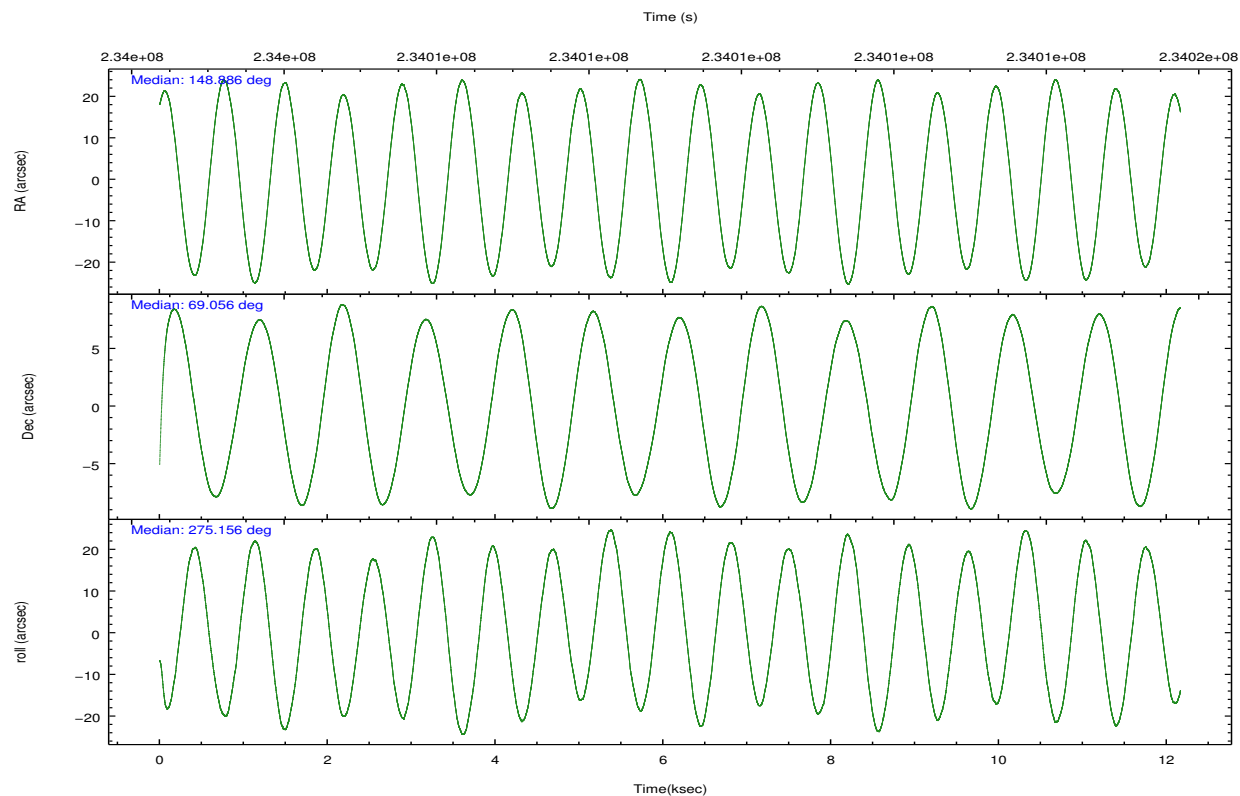
2.1.4 Events

	ccd 2	ccd 3	ccd 5	ccd 6	ccd 7	ccd 8		ccd 2	ccd 3	ccd 5	ccd 6	ccd 7	ccd 8
level 1 events	93603	85911	133460	92571	135810	113271	grade 0 events	4681	4639	3619	5977	6812	7451
rejected events	83035	75675	75371	79726	77432	89912		5%	5%	2%	6%	5%	6%
rejected %	88%	88%	56%	86%	57%	79%	grade 1 events	51	49	160	96	204	81
								0%	0%	0%	0%	0%	0%
							grade 2 events	2184	2016	18037	2590	12309	5122
								2%	2%	13%	2%	9%	4%
							grade 3 events	1007	1031	2223	1071	5308	2575
								1%	1%	1%	1%	3%	2%
							grade 4 events	1040	1031	2093	1030	5240	2342
								1%	1%	1%	1%	3%	2%
							grade 5 events	3684	4077	9483	4134	12175	5491
								3%	4%	7%	4%	8%	4%
							grade 6 events	1827	1766	33237	2379	29846	6291
								1%	2%	24%	2%	21%	5%
							grade 7 events	79129	71302	64608	75294	63916	83918
								84%	82%	48%	81%	47%	74%

2.2 Compared Parameters

Parameter	Planned	Actual	Parameter	Planned	Actual
Instrument	ACIS	ACIS	Obspar format version number	7	7
Detector	ACIS-235678	ACIS-235678	Obspar file type	PREDICTED	ACTUAL
Grating	NONE	NONE	Obspar update status	NONE	UPDATED
Data mode	FAINT	FAINT	Number of optional ACIS chips dropped	0	0
Observation mode	POINTING	POINTING	On-chip summing requested	N	N
[deg] Pointing RA	148.841248	148.8860724377558	Subarray requested	NONE	NONE
[deg] Pointing Dec	69.077716	69.05568110671959	Alternating exposures requested	N	N
[deg] Pointing Roll	275.043974	275.1587518172611	[s] Primary exposure time	0.000000	3.2
[mm] SIM focus pos	-0.684267	-0.6828225247311905			
[mm] SIM defocus	0	0.001444936568705701			
[mm] SIM translation stage pos	-190.132523	-190.1400660498719			
[mm] SIM translation stage offset	0	0.00754346686406393			
[s] Observation start time (MET)	234003145.184000	234001972.60503			
Observation start date	2005-06-01T08:51:21	2005-06-01T08:32:52			
[s] Observation end time (MET)	234015145.184000	234016298.51818			
Observation end date	2005-06-01T12:11:21	2005-06-01T12:31:38			
Read mode	TIMED	TIMED			

2.3 Aspect

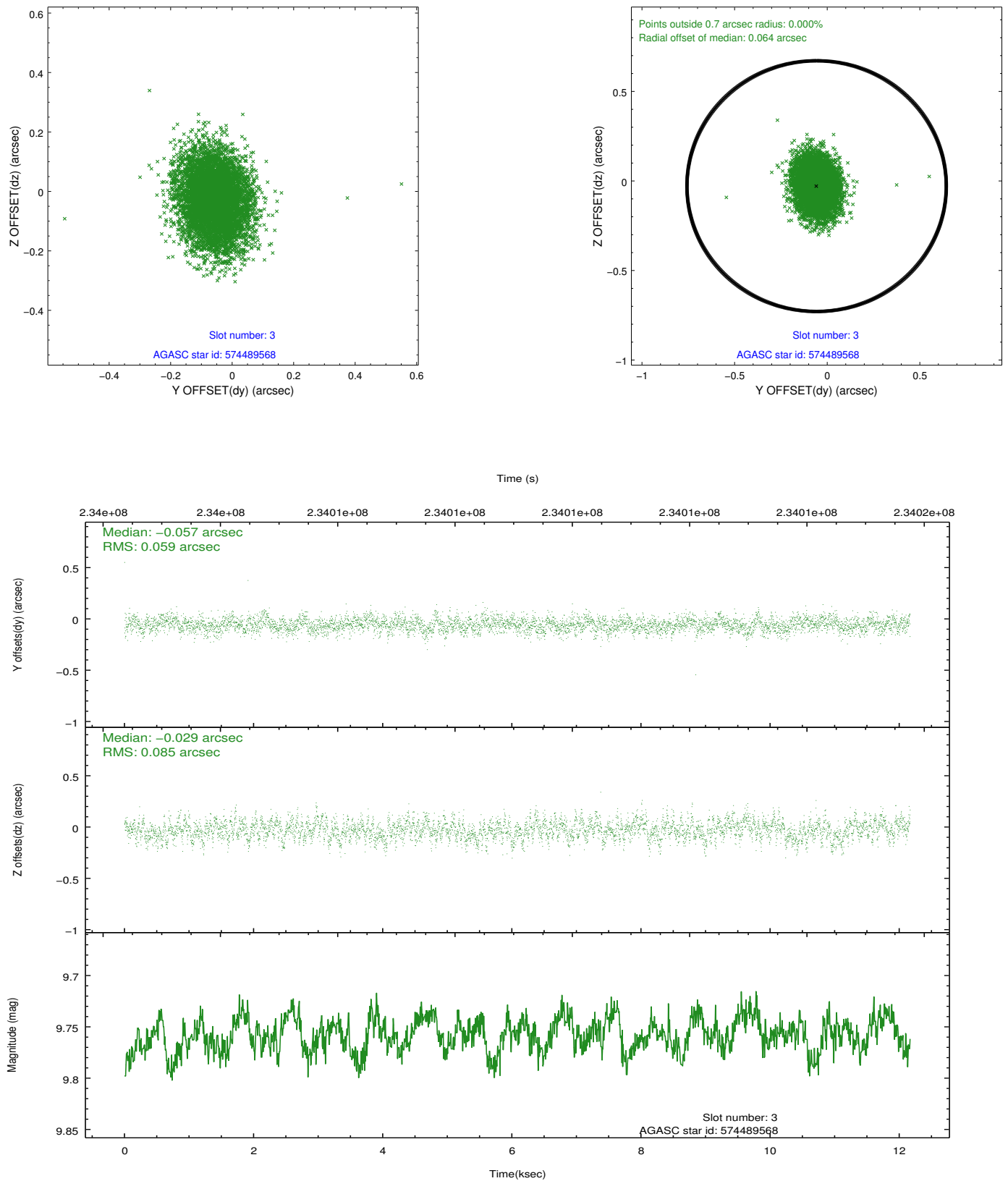


Slot Statistics

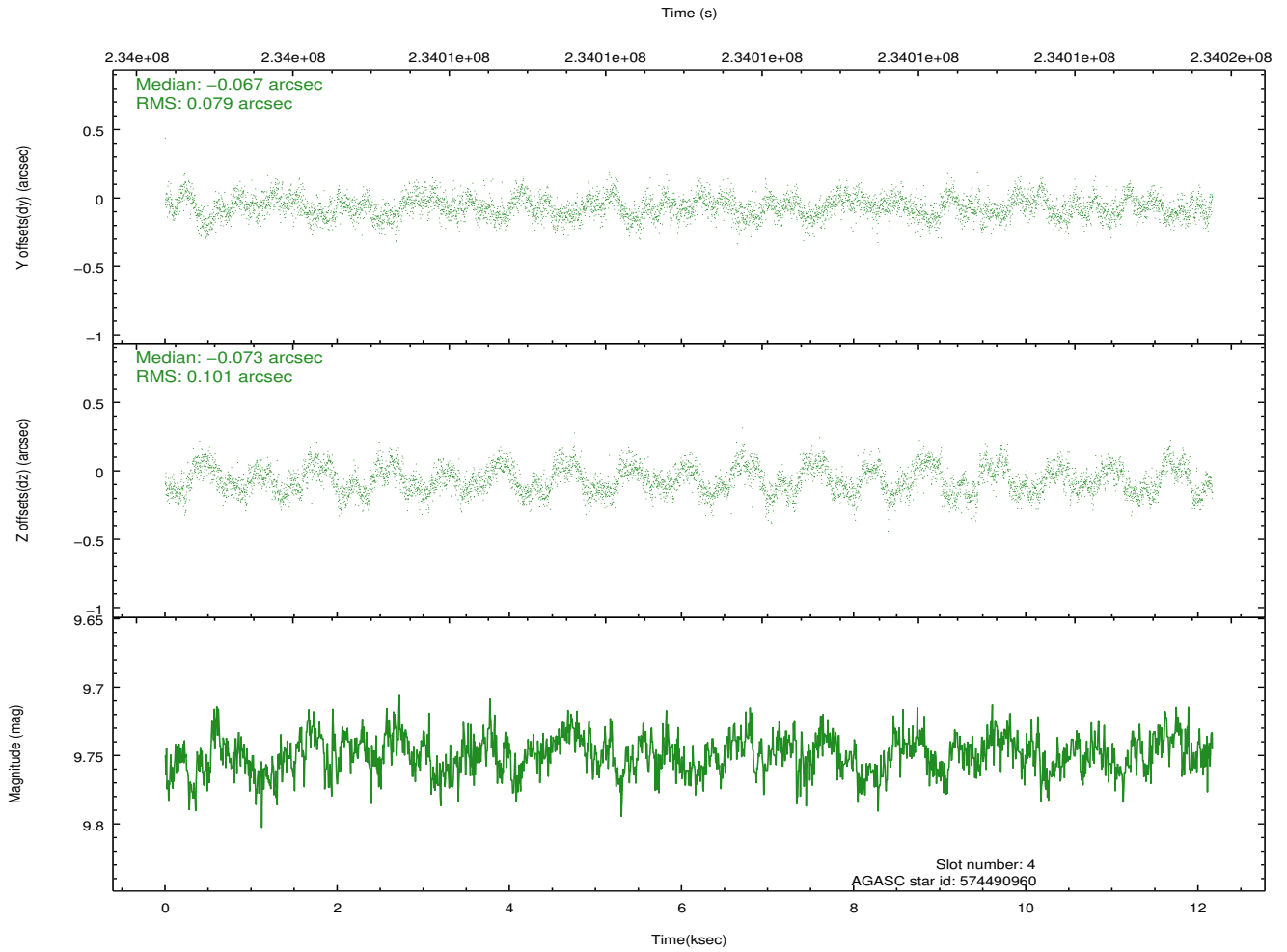
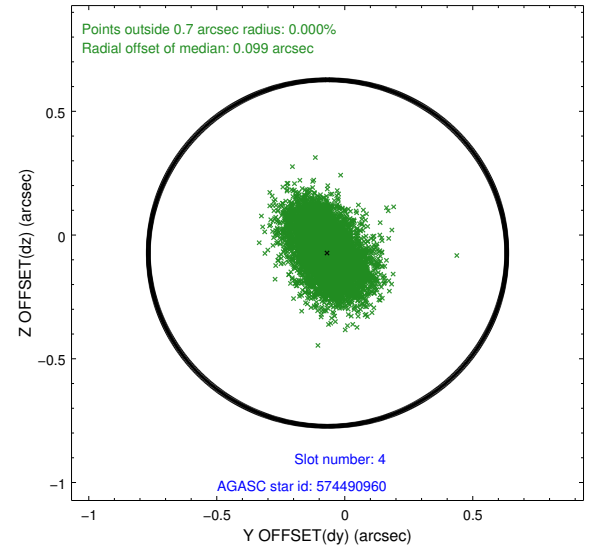
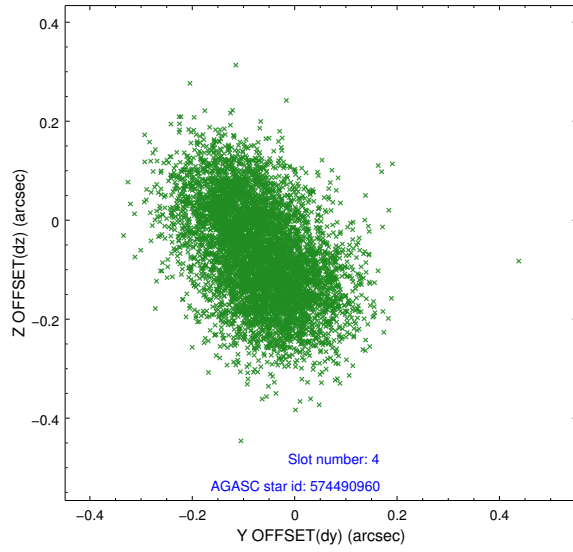
slot	status	id	mag	n_pts	med_dy	med_dz	dr1	dr2	ra	dec	mean_y	mean_z
0	FID	ACIS-S-2	7.10	2968	-0.065	-0.020	0.010	0.018	0.000000	0.000000	-759.15	-1731.67
1	FID	ACIS-S-4	7.21	2968	0.095	0.037	0.008	0.014	0.000000	0.000000	2154.07	176.50
2	FID	ACIS-S-5	7.23	2968	-0.060	-0.008	0.009	0.017	0.000000	0.000000	-1811.49	170.52
3	GUIDE	574489568	9.76	5931	-0.057	-0.029	0.109	0.181	147.223974	69.438157	-1498.81	-1920.32
4	GUIDE	574490960	9.75	5932	-0.067	-0.073	0.139	0.219	148.185918	69.658768	-2159.92	-633.19
5	GUIDE	574491280	9.36	5935	-0.054	0.007	0.094	0.164	148.611567	69.450135	-1361.12	-172.00
6	GUIDE	574497600	10.44	5934	0.063	-0.010	0.189	0.309	147.824120	68.451903	2115.26	-1536.79
7	GUIDE	574496360	9.46	5931	0.116	0.105	0.119	0.192	150.806604	68.529829	2151.95	2409.60

2.4 Star Slots

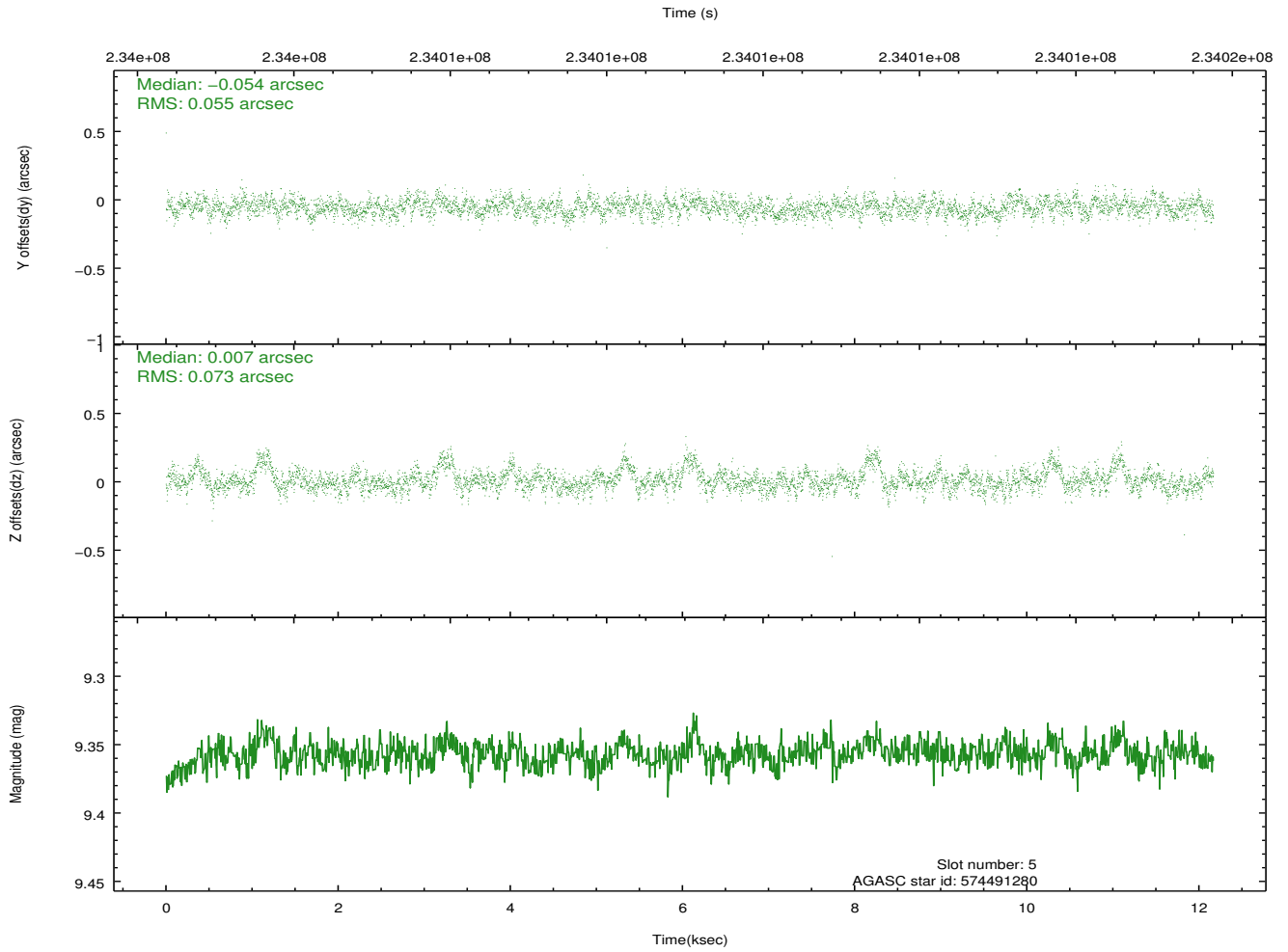
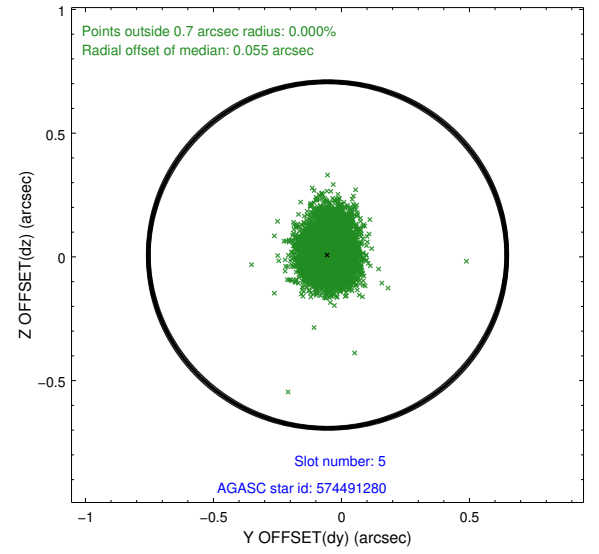
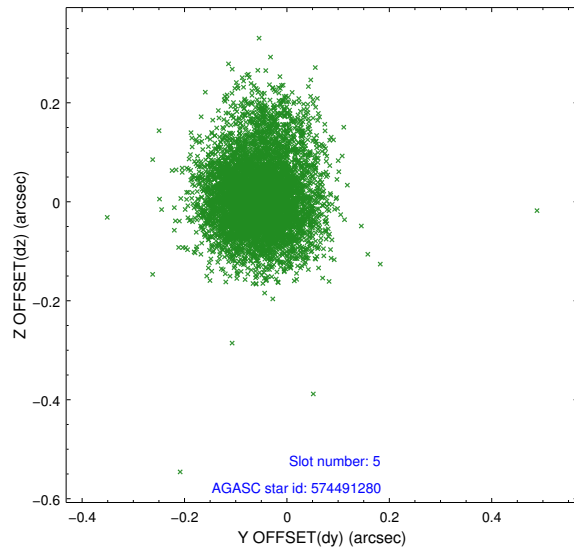
2.4.1 Slot 3



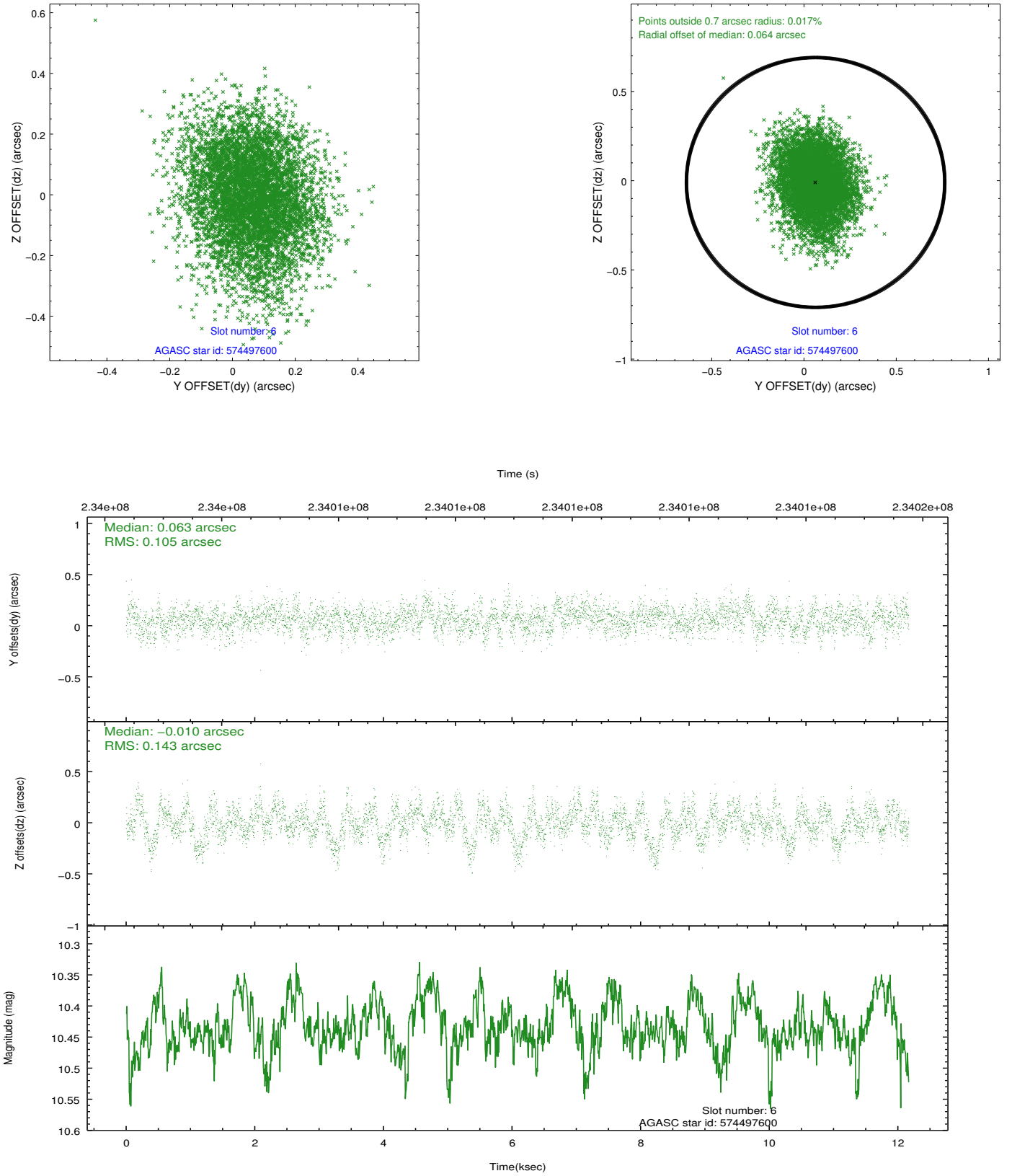
2.4.2 Slot 4



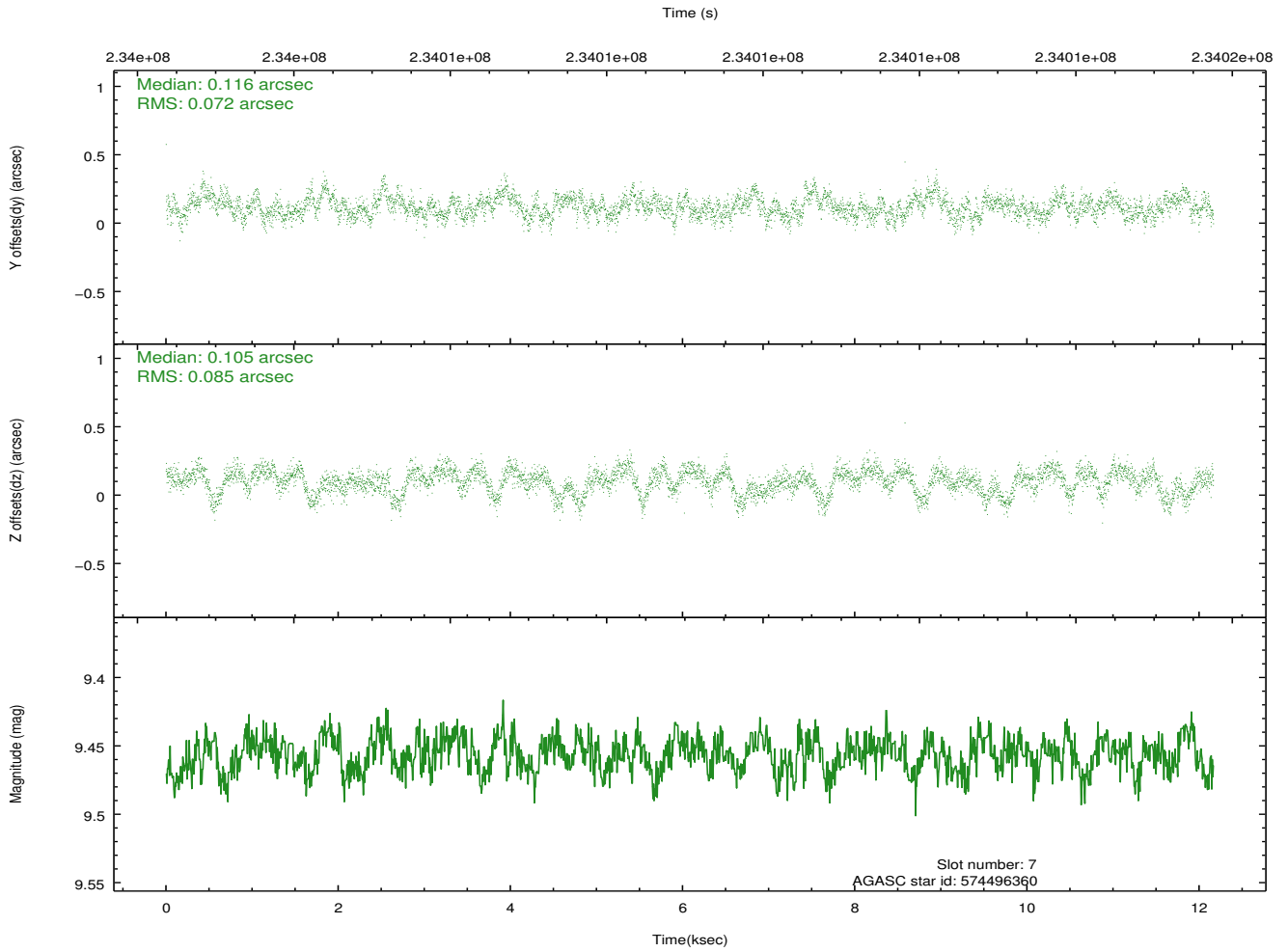
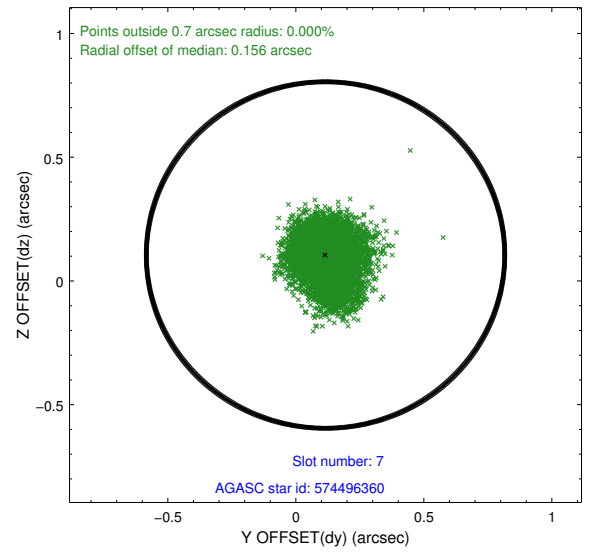
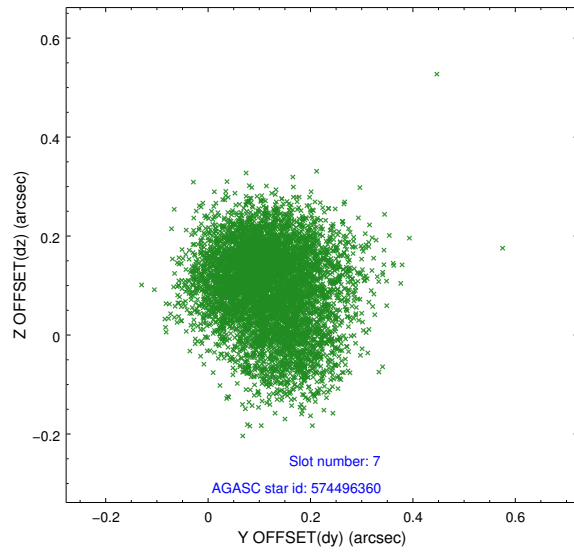
2.4.3 Slot 5



2.4.4 Slot 6

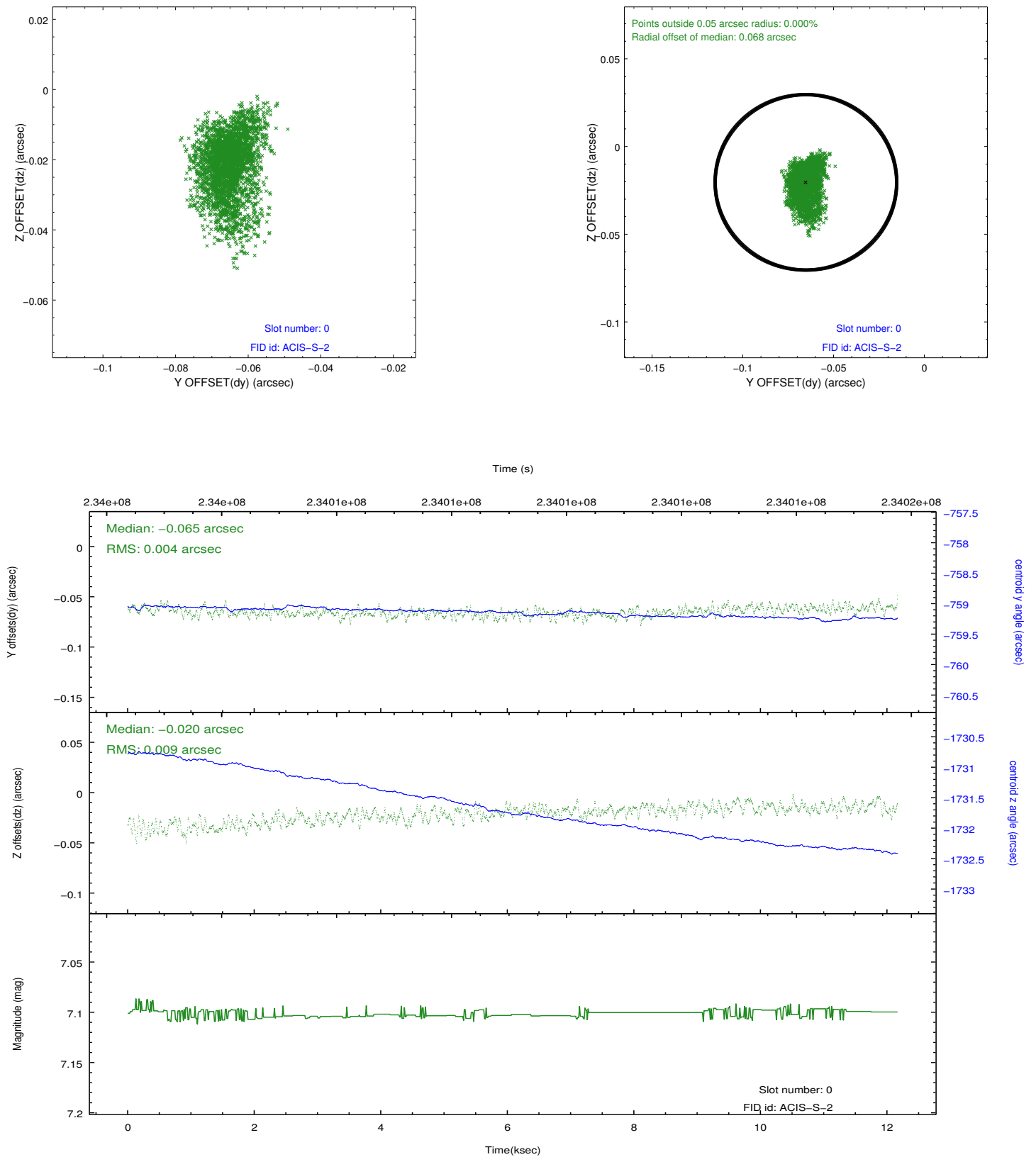


2.4.5 Slot 7

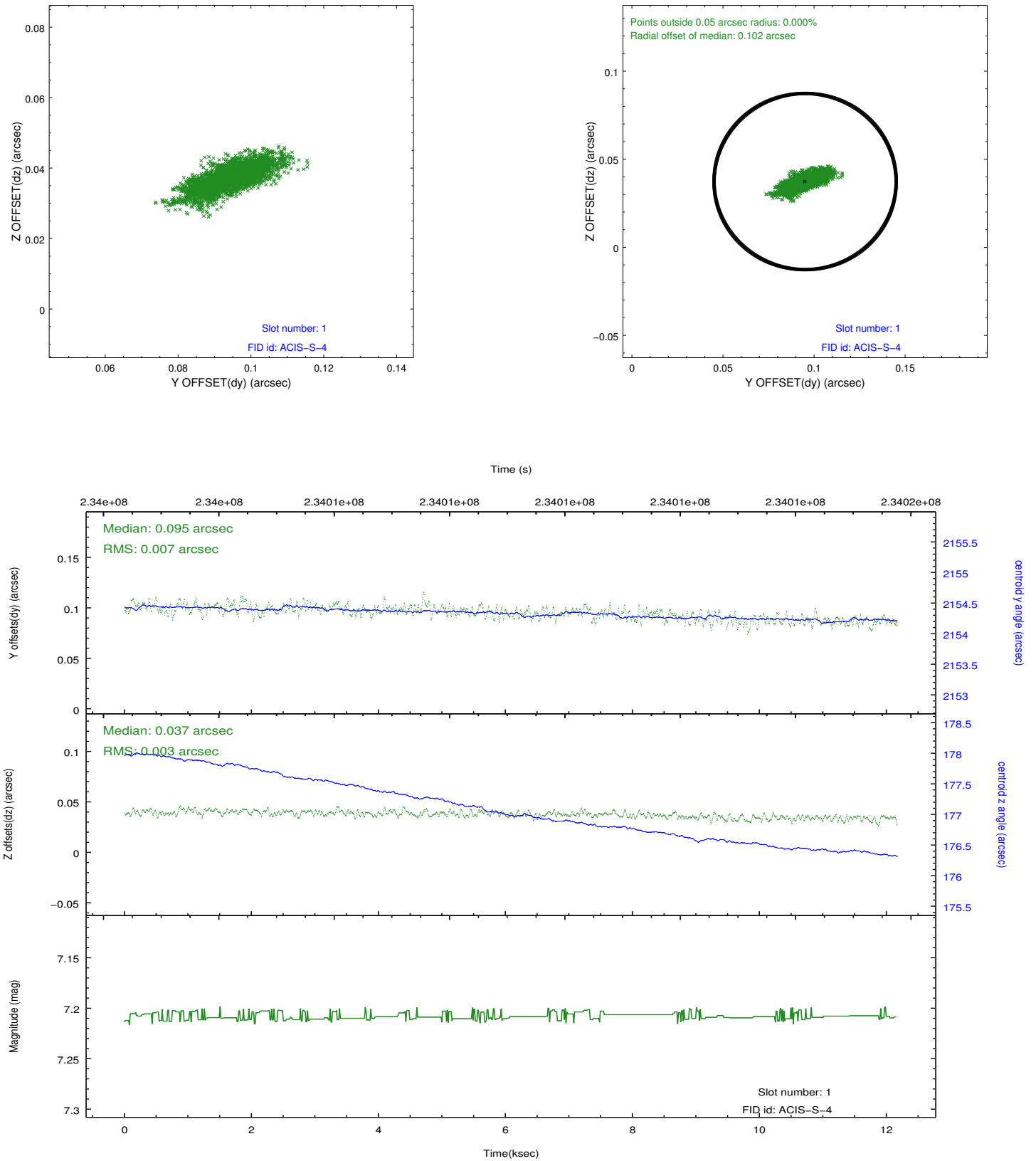


2.5 FID Slots

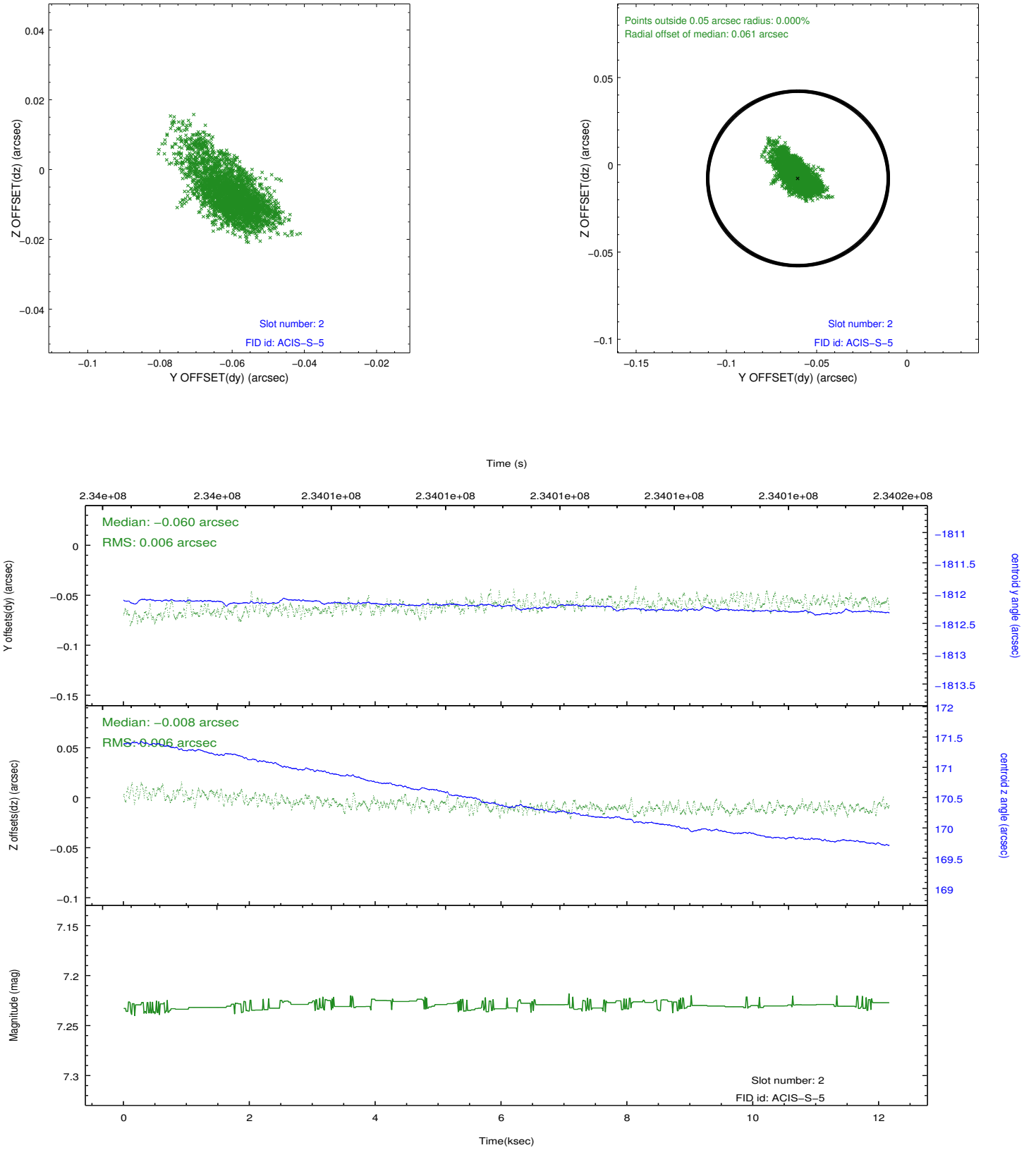
2.5.1 Slot 0



2.5.2 Slot 1



2.5.3 Slot 2



A Summary

A.1 Status

V&V Scientist	Jen Lauer
V&V Date (YYYY-MM-DD)	2013.01.16
V&V Edition	1
V&V Disposition and Status	OK
V&V Charge Time	12.15999

A.2 Comments