

# V&V Reference Report

## L2 ASCDS Version : 8.4.3

Observation 59227 - L2 Version 2  
Chandra X-Ray Center

L2 Processing Date : Mar 21 2012

## Contents

<b>1</b>	<b>Front</b>	<b>2</b>
<b>2</b>	<b>OBI</b>	<b>3</b>
2.1	OBI . . . . .	3
2.1.1	Images . . . . .	3
2.1.2	Bias . . . . .	3
2.1.3	Parameters . . . . .	4
2.1.4	Events . . . . .	4
2.2	Compared Parameters . . . . .	5
2.3	Star Slots . . . . .	6
2.4	FID Slots . . . . .	6
<b>A</b>	<b>Summary</b>	<b>7</b>
A.1	Status . . . . .	7
A.2	Comments . . . . .	7

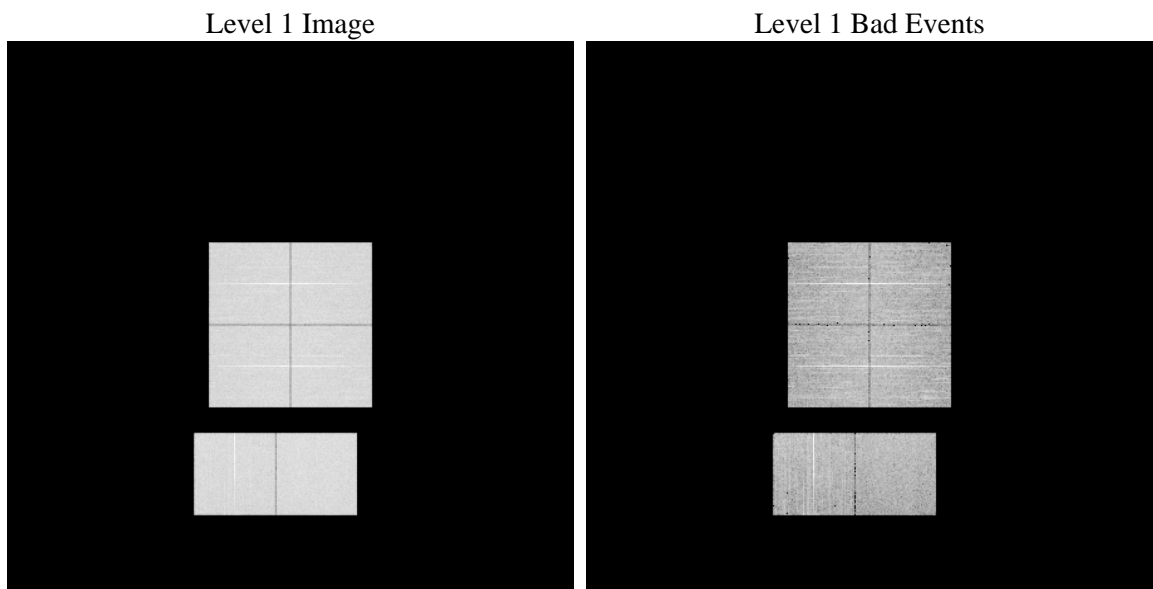
# 1 Front

seq_num	&#160	Sequence number
obs_id	59227	Observation id
title	ACIS-012367 diagnostics	Proposal title
observer	CHANDRA engineering request/realtime commanding	Principal investig
object	&#160	Source name
dtcycle	0	&#160
cycle	P	events from which exps? Prim/Second/Both
ra_targ	0.0	Observer's specified target RA [deg]
dec_targ	0.0	Observer's specified target Dec [deg]
ra_nom	85.52751239	Nominal RA [deg]
dec_nom	9.5090444280444	Nominal Dec [deg]
roll_nom	345.86996592498	Nominal Roll [deg]
revision	2	Processing version of data
ontime	7801.0947609246	Sum of GTIs [s]
livetime	7702.3126018064	Livetime [s]
ontime0	7801.0947609246	Sum of GTIs [s]
ontime1	7801.0947609246	Sum of GTIs [s]
ontime2	7801.0814364851	Sum of GTIs [s]
ontime3	7801.0947609246	Sum of GTIs [s]
ontime6	7801.0403965116	Sum of GTIs [s]
ontime7	7801.0947609246	Sum of GTIs [s]
l2events	971386	Number of level 2 events

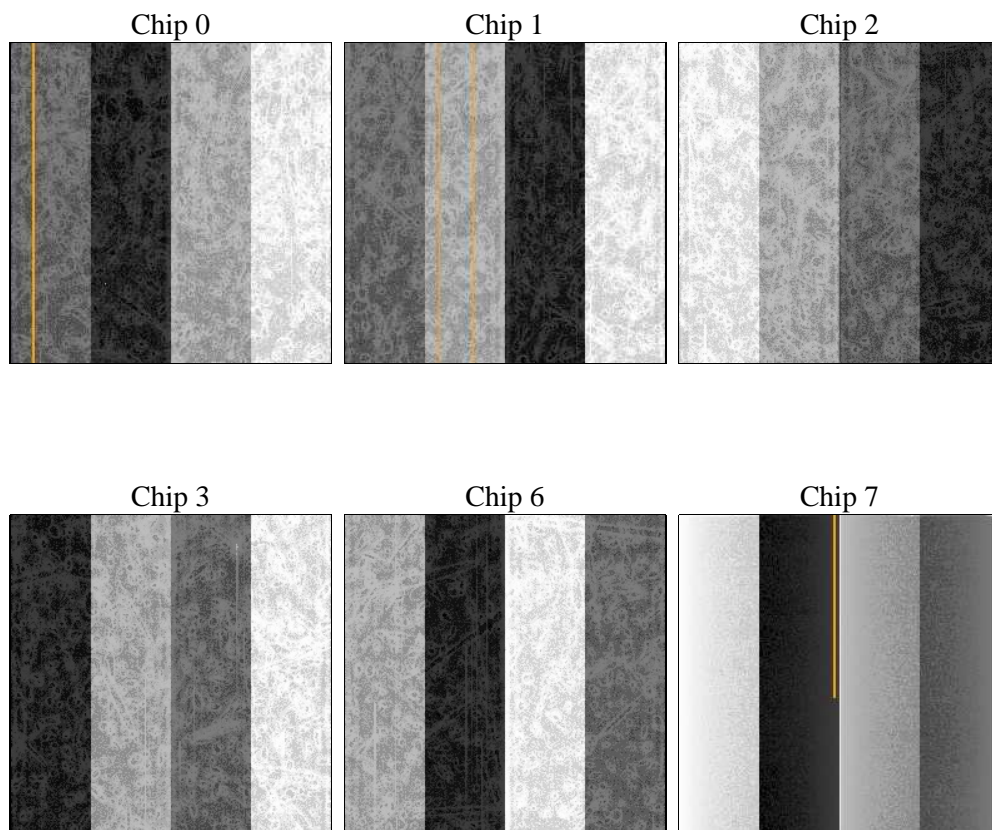
## 2 OBI

### 2.1 OBI

#### 2.1.1 Images



#### 2.1.2 Bias



### 2.1.3 Parameters

obi_num	0	Obi number	sched_exp_time	0.0	[s] Scheduled observation exposure time
ascdsver	8.4.3	Processing system revision	ontime	7801.0947609246	Sum of GTIs [s]
caldsver	4.4.8	&#160	ontime0	7801.0947609246	Sum of GTIs [s]
date	2012-03-21T03:26:43	Date and time of file creation	ontime1	7801.0947609246	Sum of GTIs [s]
revision	2	Processing version of data	ontime2	7801.0814364851	Sum of GTIs [s]
			ontime3	7801.0947609246	Sum of GTIs [s]
			ontime6	7801.0403965116	Sum of GTIs [s]
			ontime7	7801.0947609246	Sum of GTIs [s]
			l1events	1368661	Number of level 1 events

### 2.1.4 Events

	ccd 0	ccd 1	ccd 2	ccd 3	ccd 6	ccd 7		ccd 0	ccd 1	ccd 2	ccd 3	ccd 6	ccd 7
level 1 events	220973	220756	225713	227612	232320	241287	grade 0 events	89174	89589	92181	92364	92246	44120
rejected events	57285	56028	59811	61186	60731	50929		40%	40%	40%	40%	39%	18%
rejected %	25%	25%	26%	26%	26%	21%	grade 1 events	511	482	585	574	498	153
								0%	0%	0%	0%	0%	0%
							grade 2 events	28986	29405	28450	28520	29534	41486
								13%	13%	12%	12%	12%	17%
							grade 3 events	10761	10608	10869	11050	10796	19149
								4%	4%	4%	4%	4%	7%
							grade 4 events	10524	10648	10819	11211	10900	18559
								4%	4%	4%	4%	4%	7%
							grade 5 events	3321	3523	3236	3674	3807	8784
								1%	1%	1%	1%	1%	3%
							grade 6 events	24243	24478	23583	23281	28113	67044
								10%	11%	10%	10%	12%	27%
							grade 7 events	53453	52023	55990	56938	56426	41992
								24%	23%	24%	25%	24%	17%

## 2.2 Compared Parameters

Parameter	Planned	Actual	Parameter	Planned	Actual
Instrument	ACIS	ACIS	Obspar format version number	7	7
Detector	ACIS-012367	ACIS-012367	Obspar file type	PREDICTED	ACTUAL
Grating	NONE	NONE	Obspar update status	NONE	UPDATED
Data mode	FAINT	FAINT	On-chip summing requested	N	N
Observation mode	SECONDARY	SECONDARY	Subarray requested	NONE	NONE
[deg] Pointing RA	0	85.5275123899995	Alternating exposures requested	N	N
[deg] Pointing Dec	0	9.509044428044385	[s] Primary exposure time	3.2	3.2
[deg] Pointing Roll	0.0	345.8699659249831			
[mm] SIM focus pos	-0.782348	-1.526339935833849			
[mm] SIM defocus	0	0.006996703570447904			
[mm] SIM translation stage pos	-233.592463	250.466033080201			
[mm] SIM translation stage offset	0	-0.01005468664627074			
[s] Observation start time (MET)	251531007.835397	251531006.8104			
Observation start date	2005-12-21T05:43:28	2005-12-21T05:43:26			
[s] Observation end time (MET)	251544687.48603	251544686.46103			
Observation end date	2005-12-21T09:31:27	2005-12-21T09:31:26			
Read mode	TIMED	TIMED			

## 2.3 Star Slots

## 2.4 FID Slots

## A Summary

### A.1 Status

V&V Scientist	Jen Lauer
V&V Date (YYYY-MM-DD)	2012.03.21
V&V Edition	1
V&V Disposition and Status	OK
V&V Charge Time	7.8010947609246

### A.2 Comments