

V&V Reference Report

L2 ASCDS Version : 8.4.3

Observation 59187 - L2 Version 2
Chandra X-Ray Center

L2 Processing Date : Mar 22 2012

Contents

1	Front	2
2	OBI	3
2.1	OBI	3
2.1.1	Images	3
2.1.2	Bias	3
2.1.3	Parameters	4
2.1.4	Events	4
2.2	Compared Parameters	5
2.3	Star Slots	6
2.4	FID Slots	6
A	Summary	7
A.1	Status	7
A.2	Comments	7

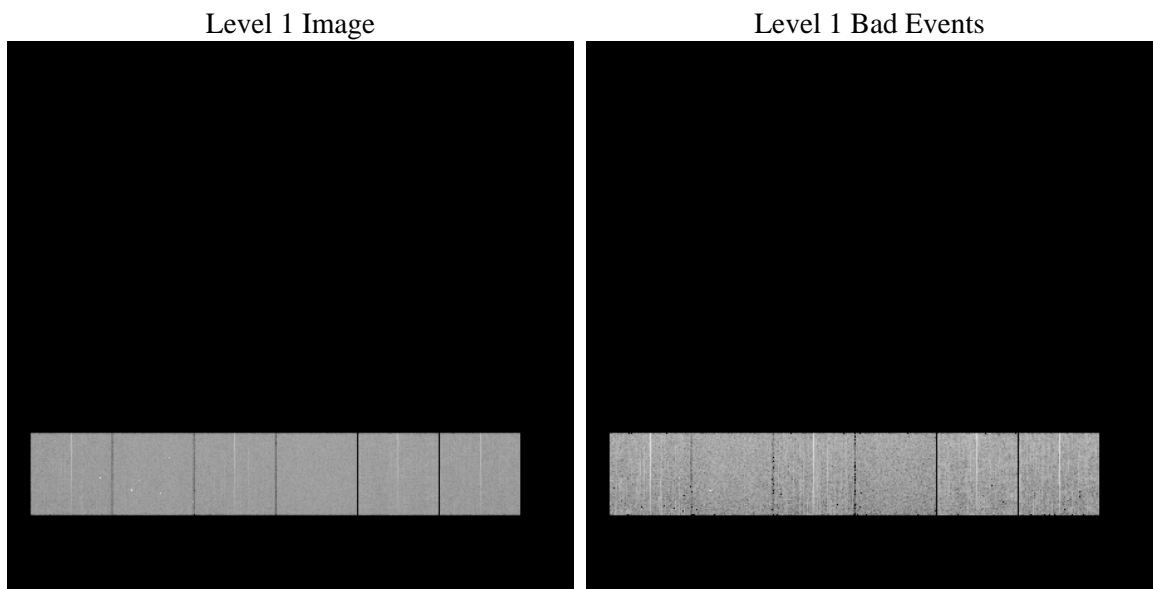
1 Front

seq_num	 	Sequence number
obs_id	59187	Observation id
title	ACIS-456789 diagnostics	Proposal title
observer	CHANDRA engineering request/realtime commanding	Principal investig
object	 	Source name
dtcycle	0	
cycle	P	events from which exps? Prim/Second/Both
ra_targ	0.0	Observer's specified target RA [deg]
dec_targ	0.0	Observer's specified target Dec [deg]
ra_nom	82.02749713548	Nominal RA [deg]
dec_nom	0.1921049394378	Nominal Dec [deg]
roll_nom	311.12340411857	Nominal Roll [deg]
revision	2	Processing version of data
ontime	5638.3999789953	Sum of GTIs [s]
livetime	5567.0031634244	Livetime [s]
ontime4	5518.4840181172	Sum of GTIs [s]
ontime5	5638.3999789953	Sum of GTIs [s]
ontime6	5628.677028209	Sum of GTIs [s]
ontime7	5638.3999789953	Sum of GTIs [s]
ontime8	5638.3999789953	Sum of GTIs [s]
ontime9	5618.9541272521	Sum of GTIs [s]
l2events	695418	Number of level 2 events

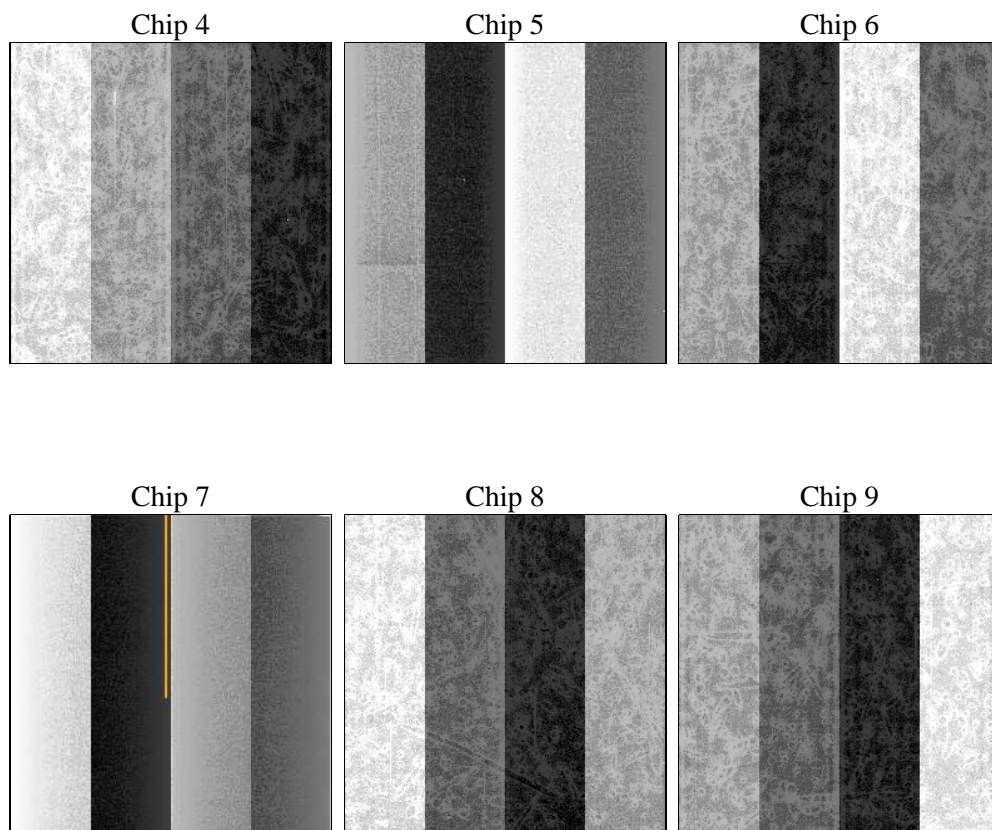
2 OBI

2.1 OBI

2.1.1 Images



2.1.2 Bias



2.1.3 Parameters

obi_num	1	Obi number	sched_exp_time	0.0	[s] Scheduled observation exposure time
ascdsver	8.4.3	Processing system revision	ontime	5638.3999789953	Sum of GTIs [s]
caldsver	4.4.8	 	ontime4	5518.4840181172	Sum of GTIs [s]
date	2012-03-22T04:35:43	Date and time of file creation	ontime5	5638.3999789953	Sum of GTIs [s]
revision	2	Processing version of data	ontime6	5628.677028209	Sum of GTIs [s]
			ontime7	5638.3999789953	Sum of GTIs [s]
			ontime8	5638.3999789953	Sum of GTIs [s]
			ontime9	5618.9541272521	Sum of GTIs [s]
			l1events	1015233	Number of level 1 events

2.1.4 Events

	ccd 4	ccd 5	ccd 6	ccd 7	ccd 8	ccd 9		ccd 4	ccd 5	ccd 6	ccd 7	ccd 8	ccd 9
level 1 events	159998	167862	169905	175064	178347	164057	grade 0 events	65326	25629	65785	31960	67708	64012
rejected events	47396	42132	47375	37705	50007	46804		40%	15%	38%	18%	37%	39%
rejected %	29%	25%	27%	21%	28%	28%	grade 1 events	552	140	366	94	371	455
								0%	0%	0%	0%	0%	0%
							grade 2 events	17722	45053	21601	30115	22963	20124
								11%	26%	12%	17%	12%	12%
							grade 3 events	7601	7191	7750	13701	8772	7598
								4%	4%	4%	7%	4%	4%
							grade 4 events	7525	7091	7784	13510	8610	7730
								4%	4%	4%	7%	4%	4%
							grade 5 events	2621	6381	2863	6692	3469	3007
								1%	3%	1%	3%	1%	1%
							grade 6 events	14428	40766	19610	48073	20287	17789
								9%	24%	11%	27%	11%	10%
							grade 7 events	44223	35611	44146	30919	46167	43342
								27%	21%	25%	17%	25%	26%

2.2 Compared Parameters

Parameter	Planned	Actual
Instrument	ACIS	ACIS
Detector	ACIS-456789	ACIS-456789
Grating	NONE	NONE
Data mode	FAINT	FAINT
Observation mode	SECONDARY	SECONDARY
[deg] Pointing RA	0	82.02749713548023
[deg] Pointing Dec	0	0.1921049394377955
[deg] Pointing Roll	0.0	311.1234041185714
[mm] SIM focus pos	-0.684267	-1.526339935833849
[mm] SIM defocus	0	0.006996703570447904
[mm] SIM translation stage pos	-190.132523	250.466033080201
[mm] SIM translation stage offset	0	-0.01005468664627074
[s] Observation start time (MET)	253127394.159322	253127393.13434
Observation start date	2006-01-08T17:09:54	2006-01-08T17:09:53
[s] Observation end time (MET)	253145329.610152	253145328.58517
Observation end date	2006-01-08T22:08:50	2006-01-08T22:08:48
Read mode	TIMED	TIMED

Parameter	Planned	Actual
Obspar format version number	7	7
Obspar file type	PREDICTED	ACTUAL
Obspar update status	NONE	UPDATED
On-chip summing requested	N	N
Subarray requested	NONE	NONE
Alternating exposures requested	N	N
[s] Primary exposure time	3.2	3.2

2.3 Star Slots

2.4 FID Slots

A Summary

A.1 Status

V&V Scientist	Beth Sundheim
V&V Date (YYYY-MM-DD)	2012.03.22
V&V Edition	1
V&V Disposition and Status	OK
V&V Charge Time	5.6383999789953

A.2 Comments