

V&V Reference Report

L2 ASCDS Version : 7.6.7.1

Observation 5897 - L2 Version 002
Chandra X-Ray Center

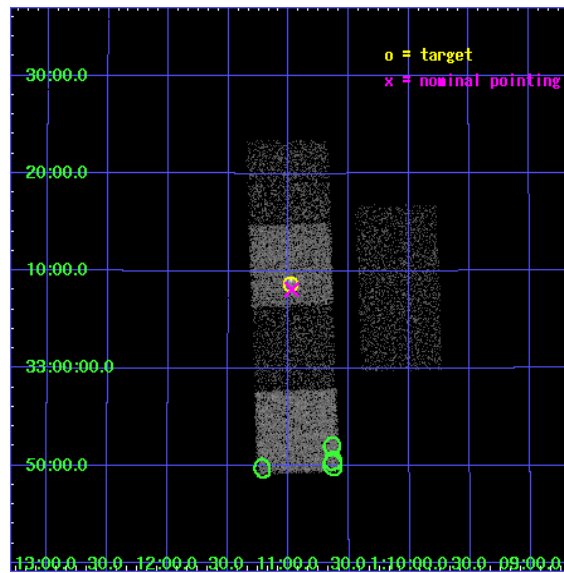
L2 Processing Date : Apr 10 2006

Contents

1	Front	2
2	OBI	3
2.1	OBI	3
2.1.1	Images	3
2.1.2	Bias	3
2.1.3	Parameters	4
2.1.4	Events	4
2.2	Compared Parameters	5
2.3	Aspect	6
2.4	Star Slots	9
2.4.1	Slot 3	9
2.4.2	Slot 4	10
2.4.3	Slot 5	11
2.4.4	Slot 6	12
2.4.5	Slot 7	13
2.5	FID Slots	14
2.5.1	Slot 0	14
2.5.2	Slot 1	15
2.5.3	Slot 2	16
3	Point Sources	17
A	Summary	18
A.1	Status	18
A.2	Comments	18

1 Front

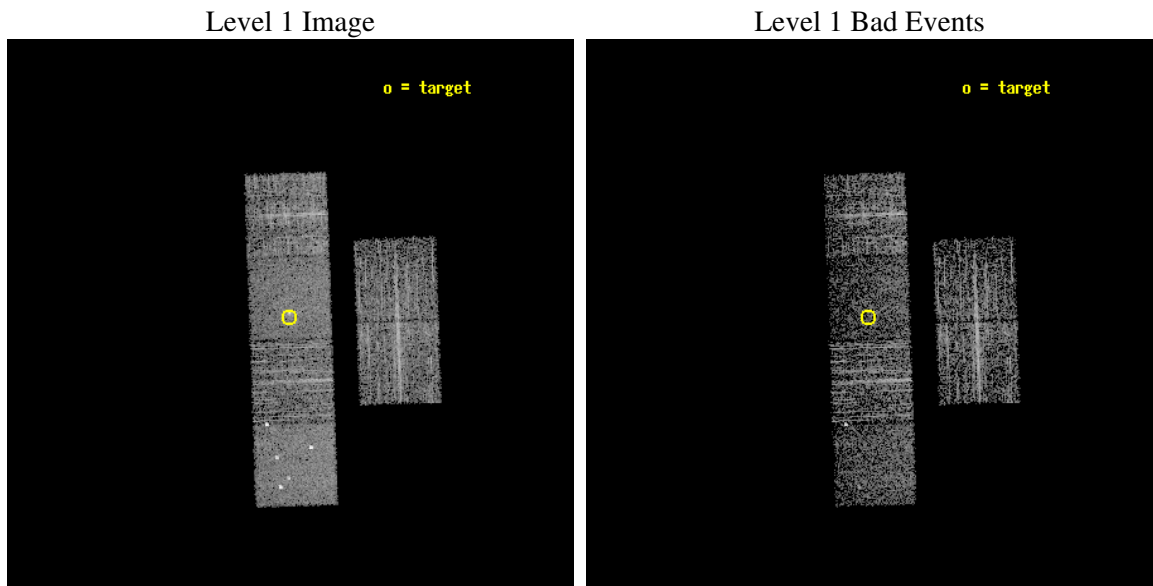
seq_num	600416
obs_id	5897
title	Snapshot Observations of X-ray Bright Early-Type Galaxies
observer	Dr. Stephen Murray
object	NGC410
dtcycle	0
cycle	P
ra_targ	17.745833
dec_targ	33.145
ra_nom	17.743318709839
dec_nom	33.135436582498
roll_nom	267.98013589915
revision	2
ontime	2588.799990356
livetime	2556.0190460899
ontime2	2588.799990356
ontime3	2588.799990356
ontime5	2588.799990356
ontime6	2588.799990356
ontime7	2588.799990356
ontime8	2588.799990356
l2events	24160



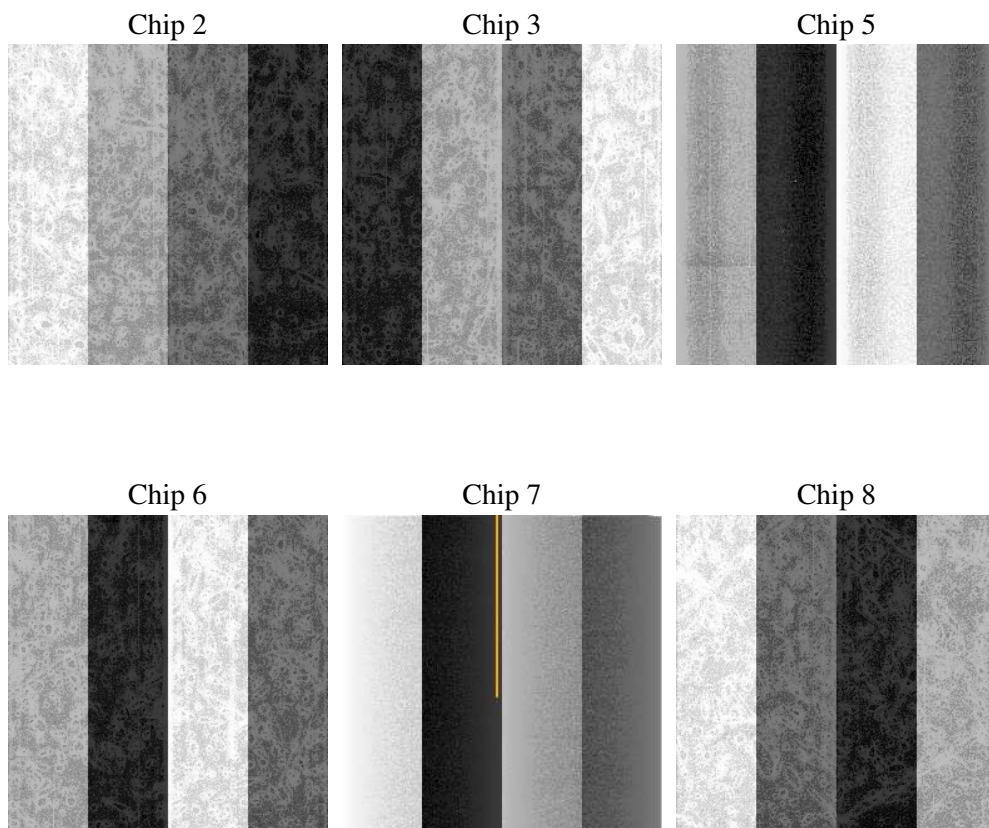
2 OBI

2.1 OBI

2.1.1 Images



2.1.2 Bias



2.1.3 Parameters

obi_num	0
ascdsver	7.6.7.1
caldsver	3.2.1
date	2006-04-10T22:37:22
revision	2

sched_exp_time	2415.649000
ontime	3065.9980480671
ontime2	3065.9980281889
ontime3	3065.9980480671
ontime5	3065.9980480671
ontime6	3065.9980480671
ontime7	3065.9980480671
ontime8	3065.9980480671
l1events	137568

2.1.4 Events

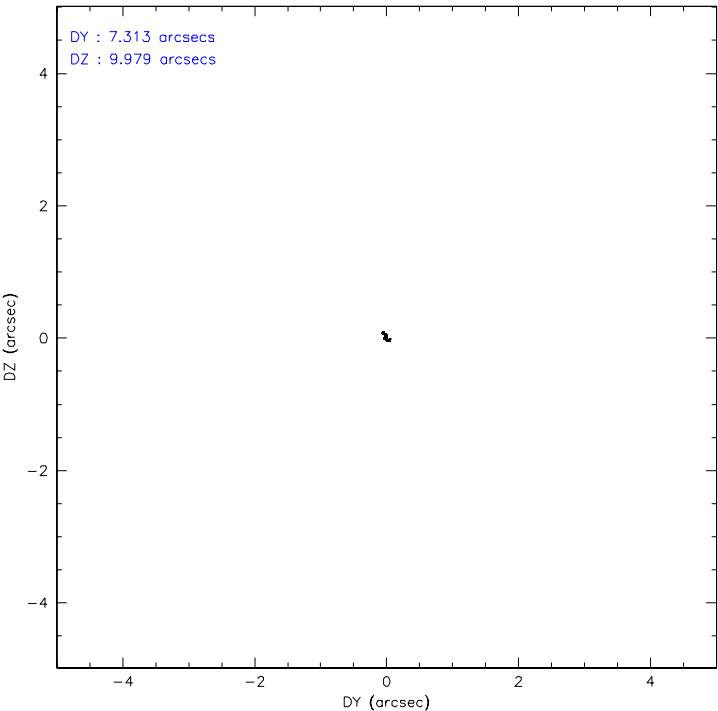
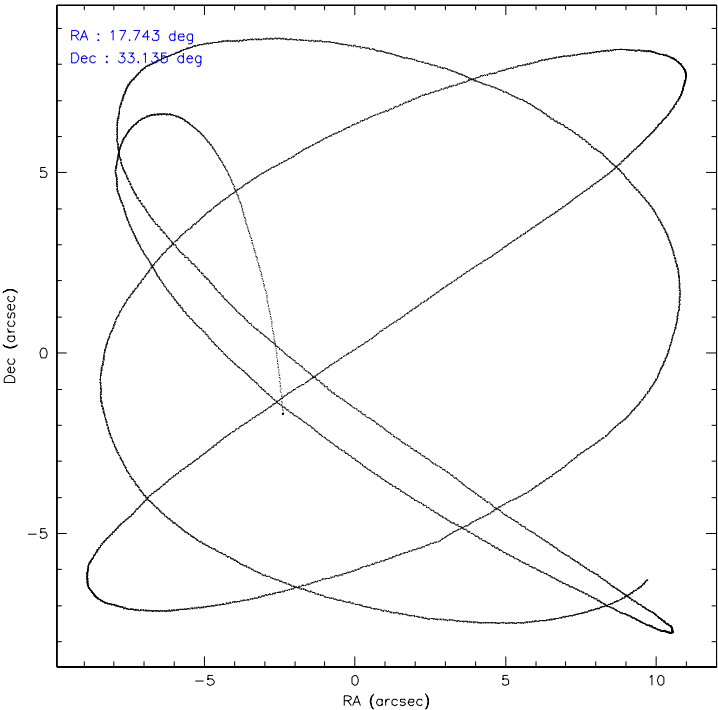
	ccd 2	ccd 3	ccd 5	ccd 6	ccd 7	ccd 8
level 1 events	22017	18620	28734	20940	22286	24971
rejected events	20365	17092	16235	19177	13860	20214
rejected %	92%	91%	56%	91%	62%	80%

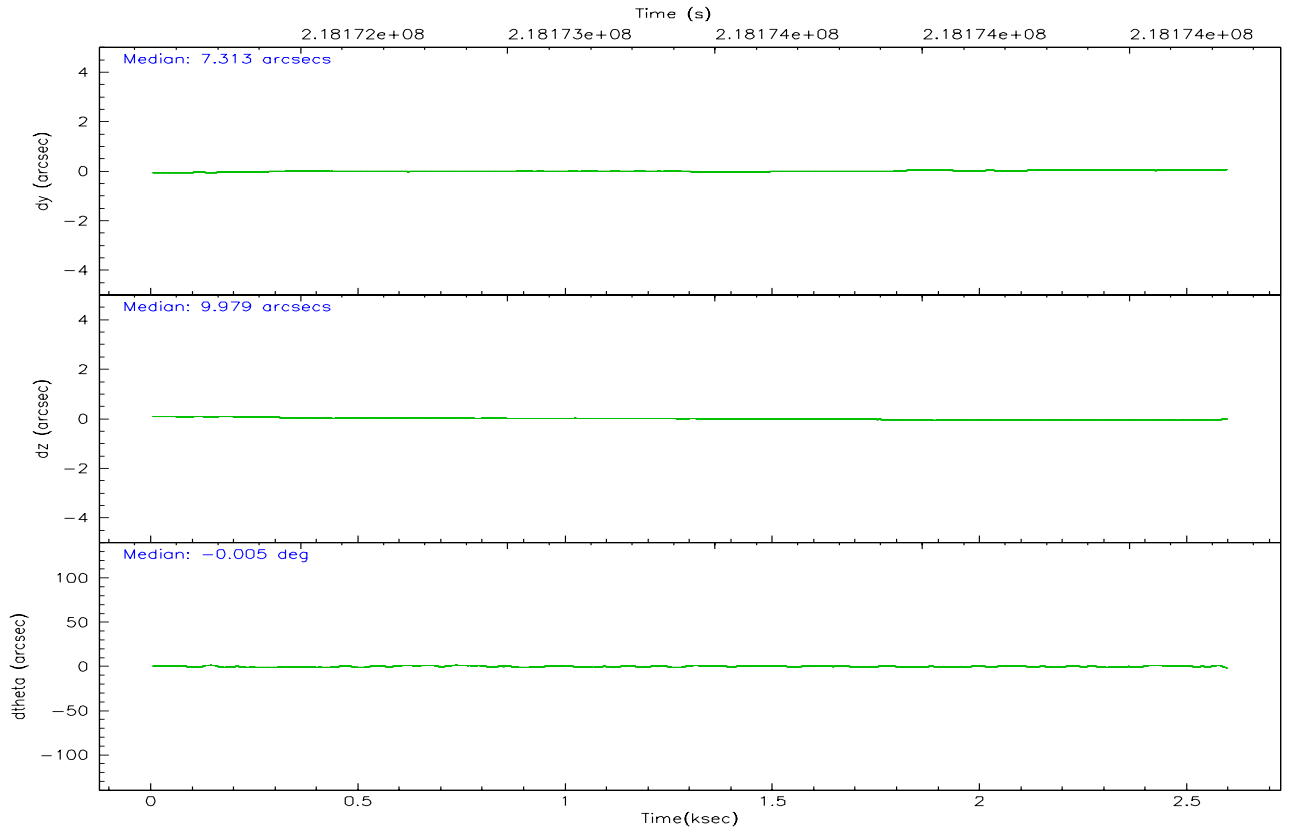
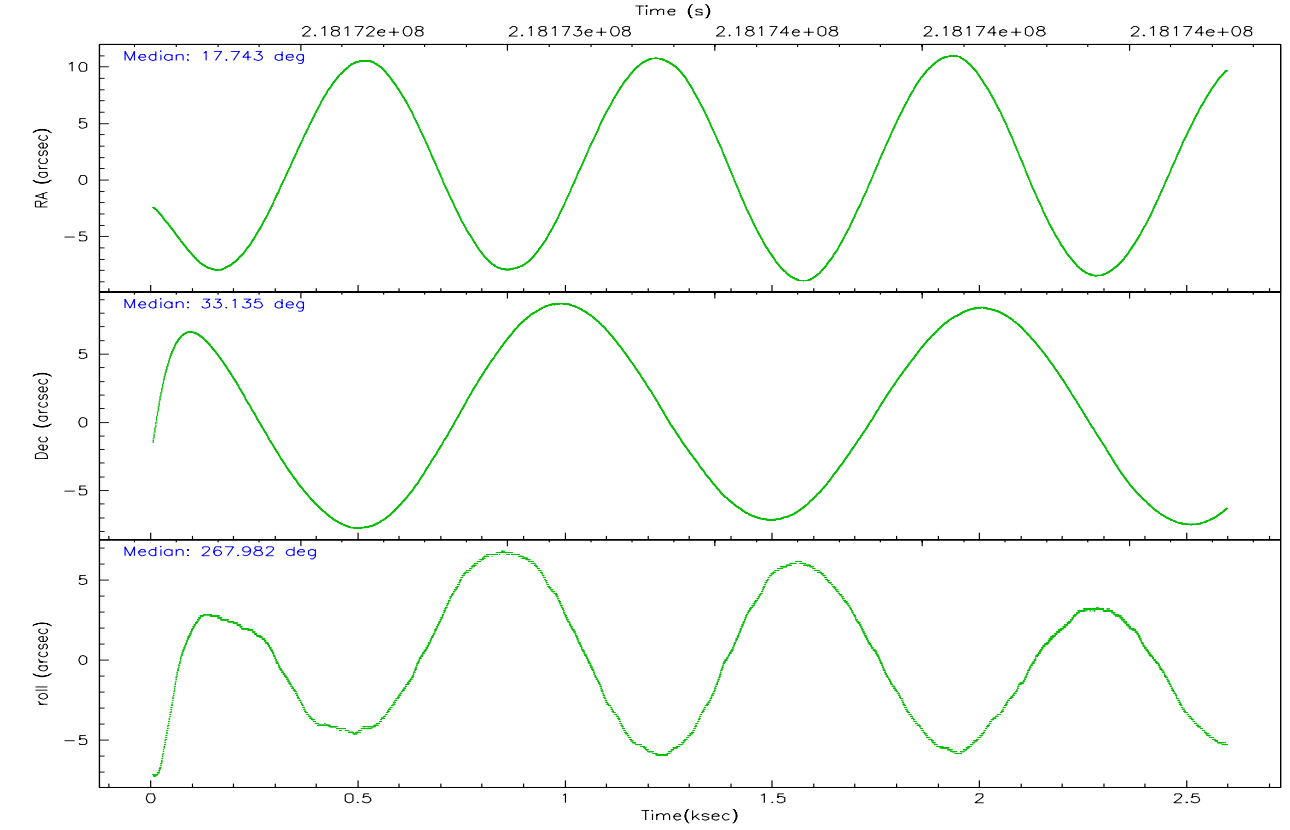
	ccd 2	ccd 3	ccd 5	ccd 6	ccd 7	ccd 8
grade 0 events	711	658	2410	750	792	1636
	3%	3%	8%	3%	3%	6%
grade 1 events	13	10	276	9	17	14
	0%	0%	0%	0%	0%	0%
grade 2 events	442	357	4275	430	2430	1339
	2%	1%	14%	2%	10%	5%
grade 3 events	205	230	405	237	613	564
	0%	1%	1%	1%	2%	2%
grade 4 events	244	202	354	256	625	537
	1%	1%	1%	1%	2%	2%
grade 5 events	652	731	1515	798	1630	1137
	2%	3%	5%	3%	7%	4%
grade 6 events	354	364	7166	405	5403	1569
	1%	1%	24%	1%	24%	6%
grade 7 events	19396	16068	12333	18055	10776	18175
	88%	86%	42%	86%	48%	72%

2.2 Compared Parameters

Parameter	Planned	Actual	Parameter	Planned	Actual
Instrument	ACIS	ACIS	Obspar format version number	6	6
Detector	ACIS-235678	ACIS-235678	Obspar file type	PREDICTED	ACTUAL
Grating	NONE	NONE	Obspar update status	NONE	UPDATED
Data mode	VFAINT	VFAINT	On-chip summing requested	N	N
Observation mode	POINTING	POINTING	Subarray requested	NONE	NONE
Pointing RA	17.727759	17.74331870983901	Alternating exposures requested	N	N
Pointing Dec	33.159409	33.13543658249797	Primary exposure time	0.000000	3.2
Pointing Roll	267.832054	267.9801358991507			
SIM focus pos (mm)	-0.684267	-0.6828225247311905			
SIM defocus (mm)	0	0.001444936568705701			
SIM translation stage pos (mm)	-190.132523	-190.1400660498719			
SIM translation stage offset (mm)	0	0.00754346686406393			
Observation start time	218172327.184000	218171023.18804			
Observation start date	2004-11-30T03:24:23	2004-11-30T03:03:43			
Observation end time	218174743.184000	218174960.72572			
Observation end date	2004-11-30T04:04:39	2004-11-30T04:09:20			
Read mode	TIMED	TIMED			

2.3 Aspect



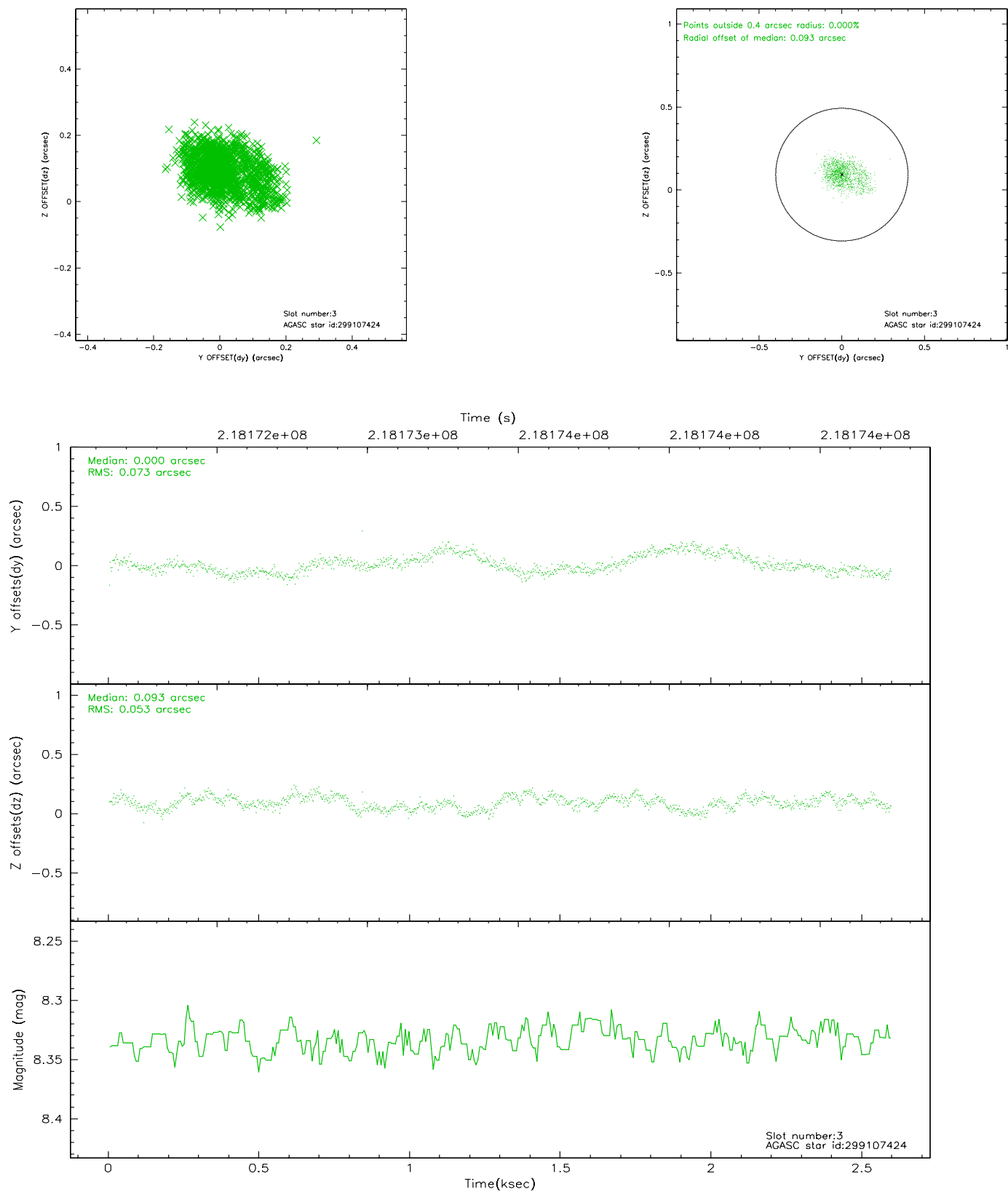


Slot Statistics

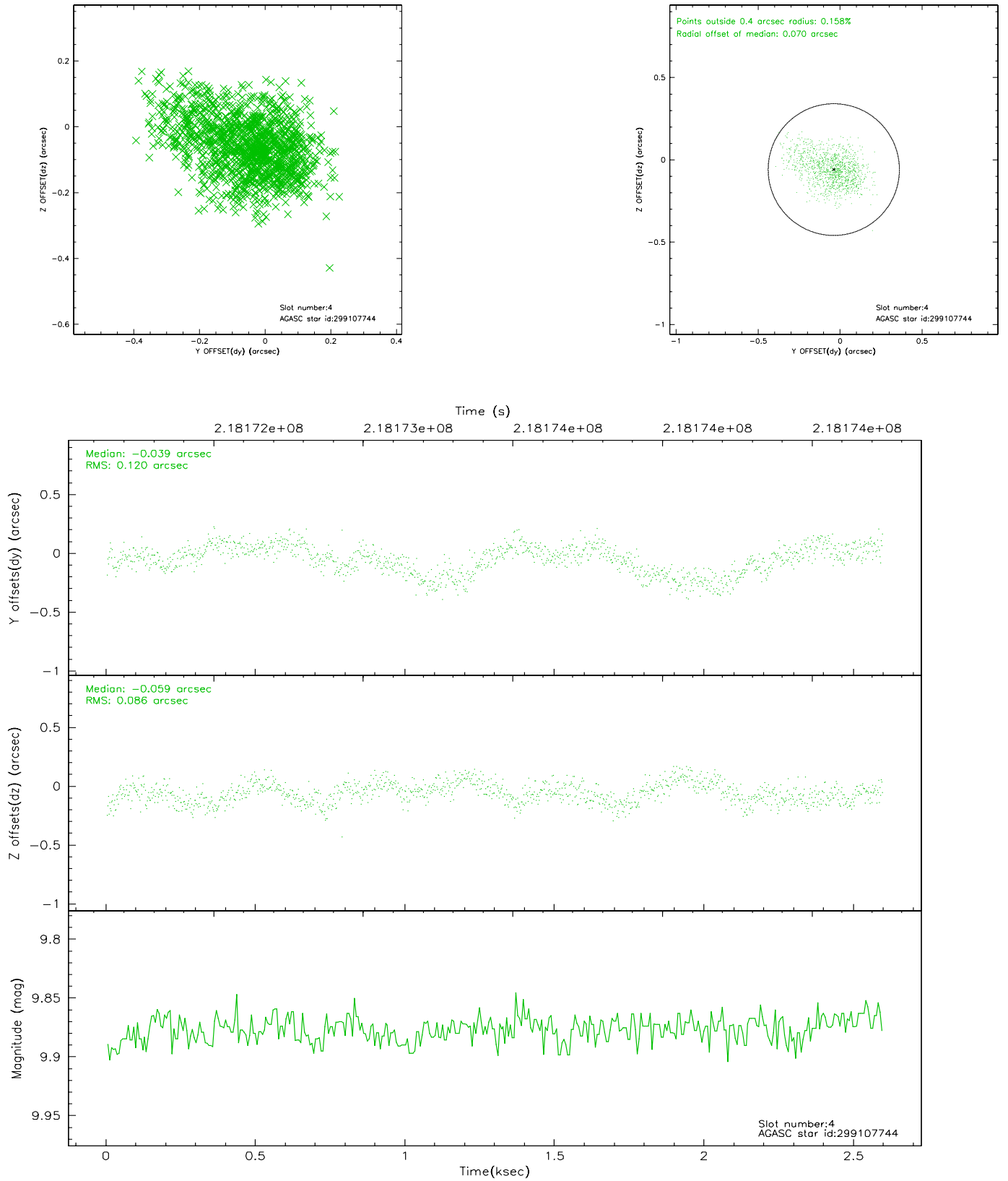
slot	status	id	mag	n_pts	med_dy	med_dz	dr1	dr2	ra	dec	mean_y	mean_z
0	FID	ACIS-S-1	7.19	633	0.024	-0.004	0.007	0.010	0.000000	0.000000	935.98	-1726.86
1	FID	ACIS-S-2	7.11	633	-0.037	-0.003	0.008	0.014	0.000000	0.000000	-758.59	-1733.98
2	FID	ACIS-S-6	7.35	633	-0.007	0.013	0.006	0.010	0.000000	0.000000	400.49	811.91
3	GUIDE	299107424	8.33	1265	0.000	0.093	0.094	0.161	17.950584	32.741625	1476.61	731.65
4	GUIDE	299107744	9.88	1266	-0.039	-0.059	0.154	0.265	17.839618	32.963311	693.55	365.26
5	GUIDE	299108128	9.09	1263	0.029	0.048	0.084	0.130	17.723830	33.646507	-1751.42	-77.22
6	GUIDE	299108248	8.10	1266	-0.013	-0.040	0.072	0.107	17.424715	33.743221	-2068.80	-985.67
7	GUIDE	299115408	7.75	1265	0.028	-0.037	0.063	0.098	17.777229	32.517830	2300.55	237.16

2.4 Star Slots

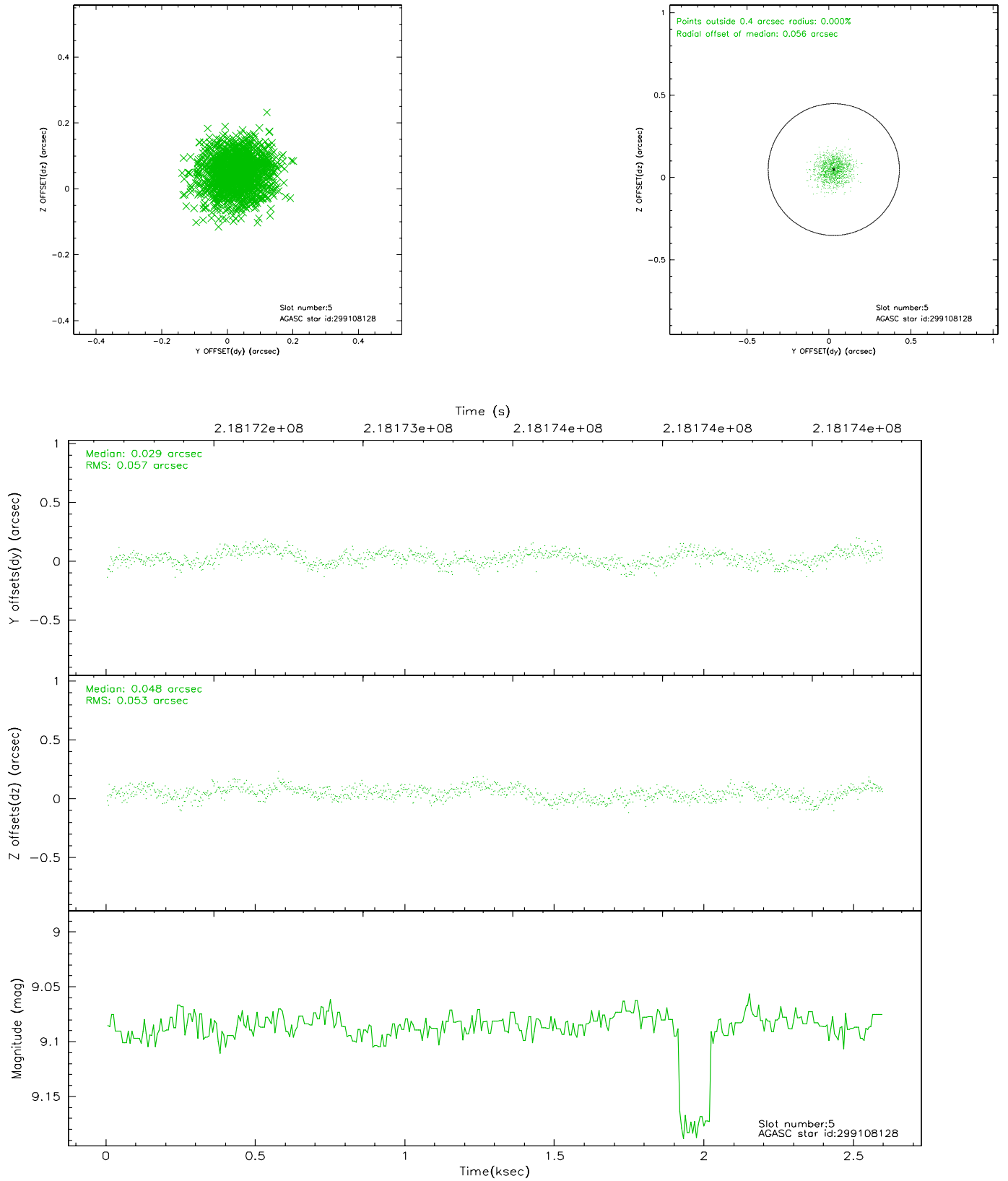
2.4.1 Slot 3



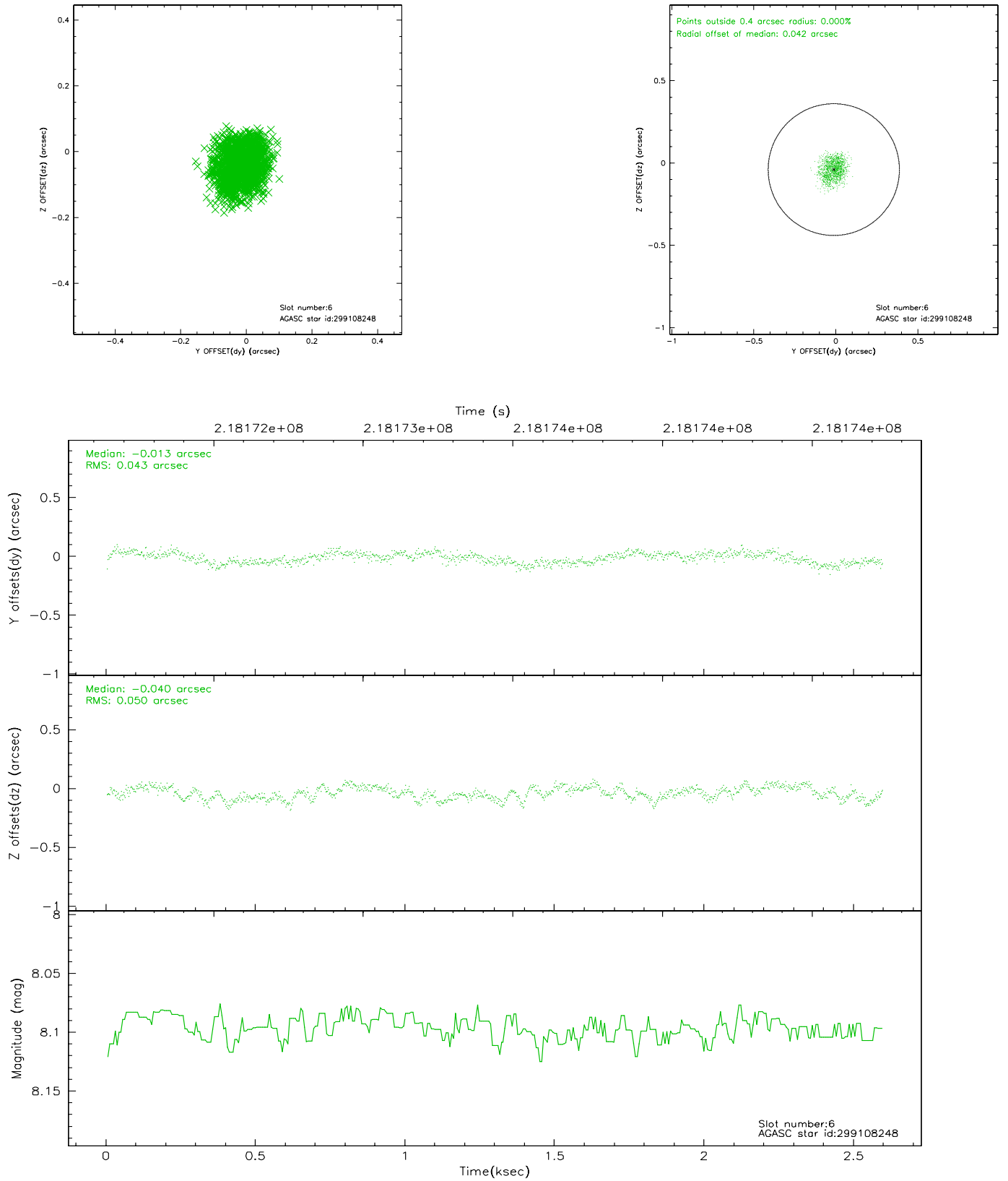
2.4.2 Slot 4



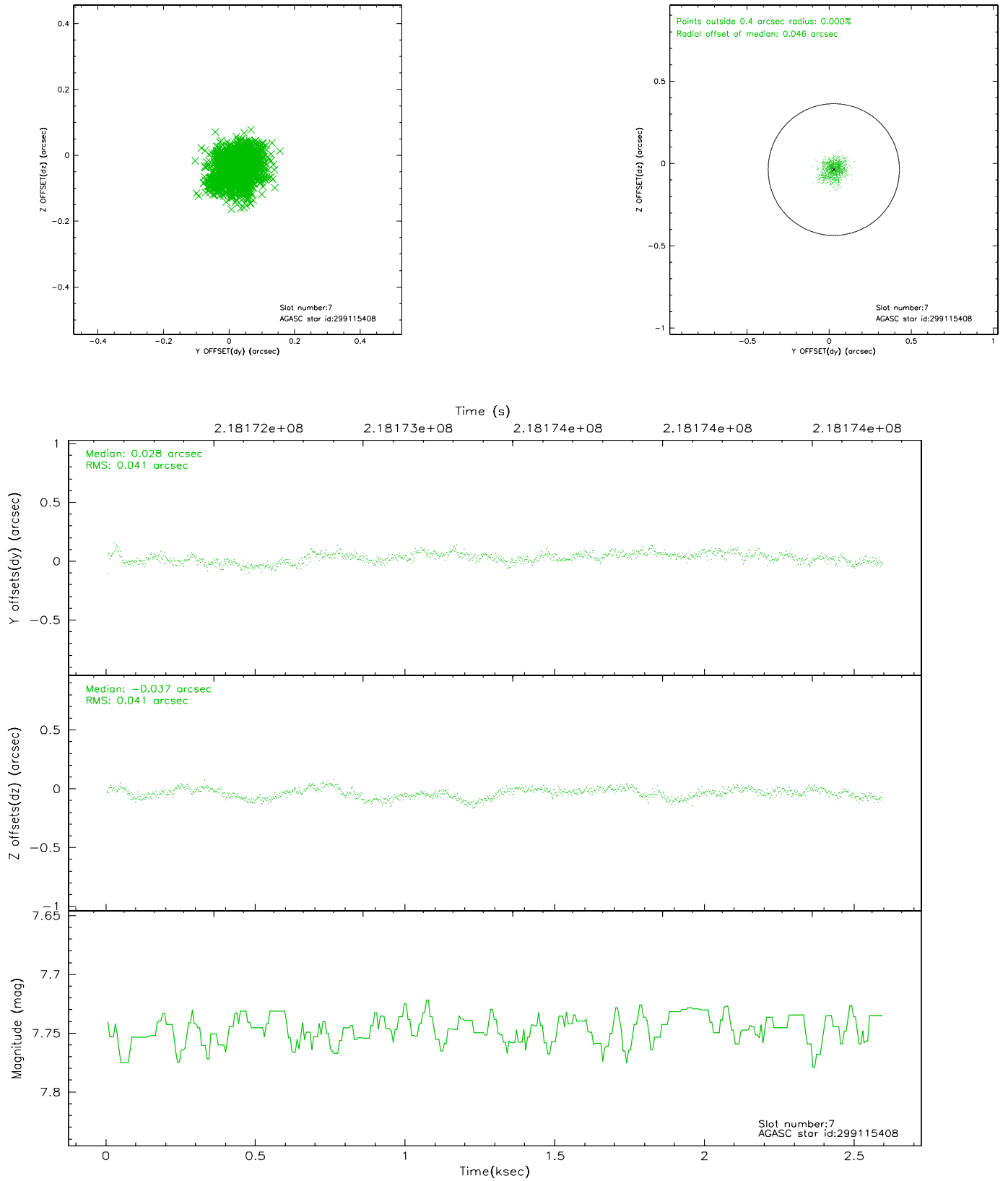
2.4.3 Slot 5



2.4.4 Slot 6

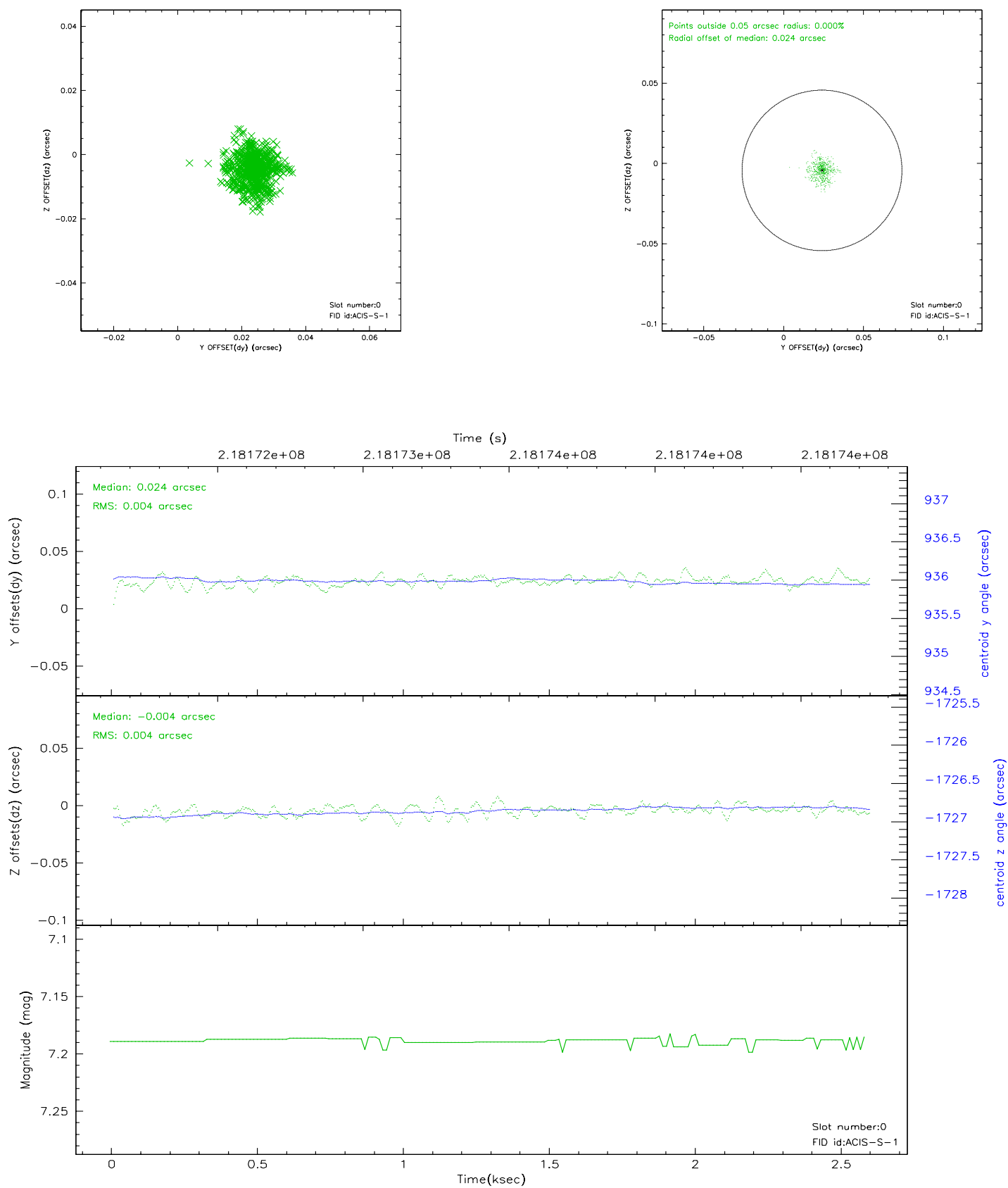


2.4.5 Slot 7

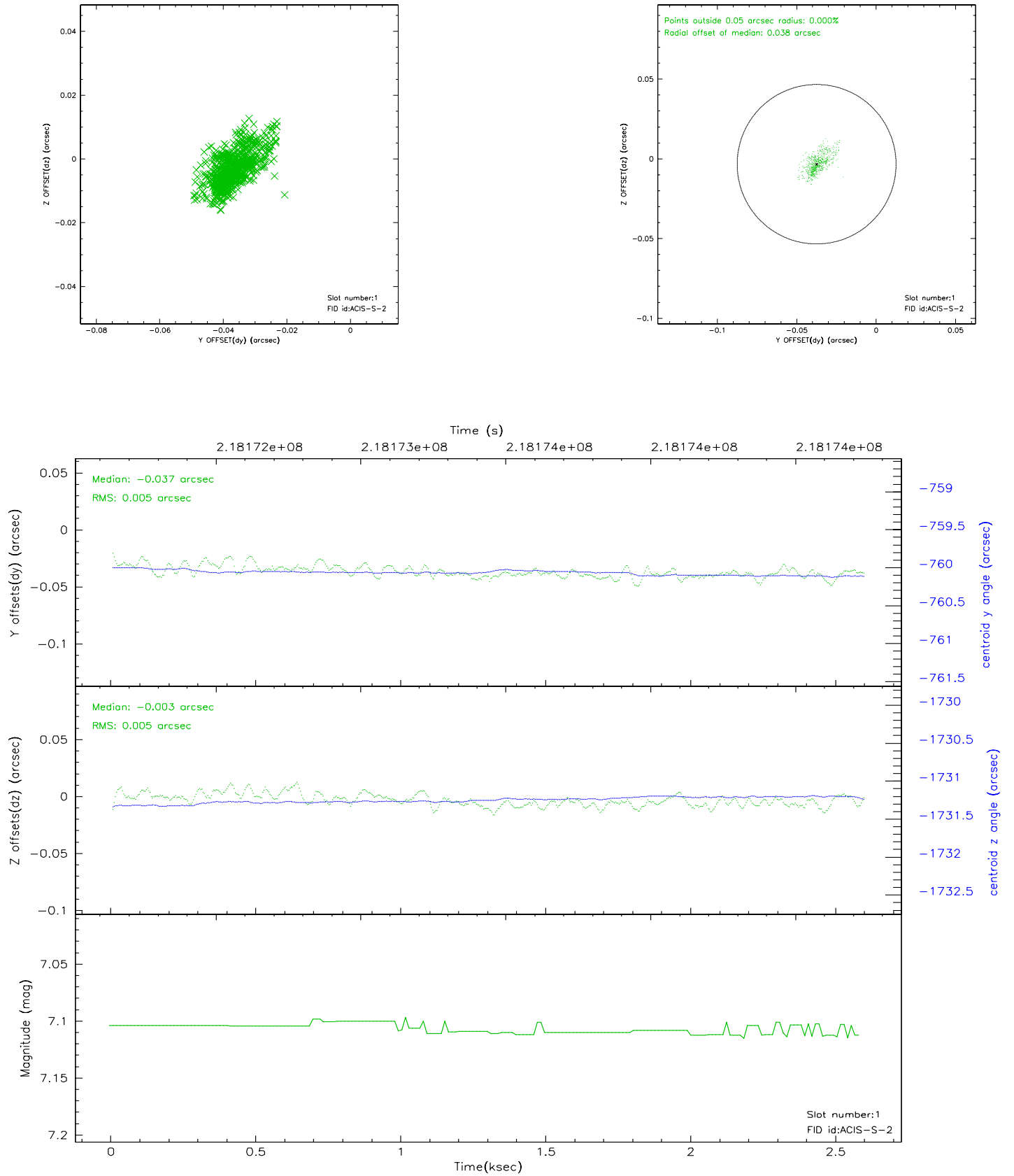


2.5 FID Slots

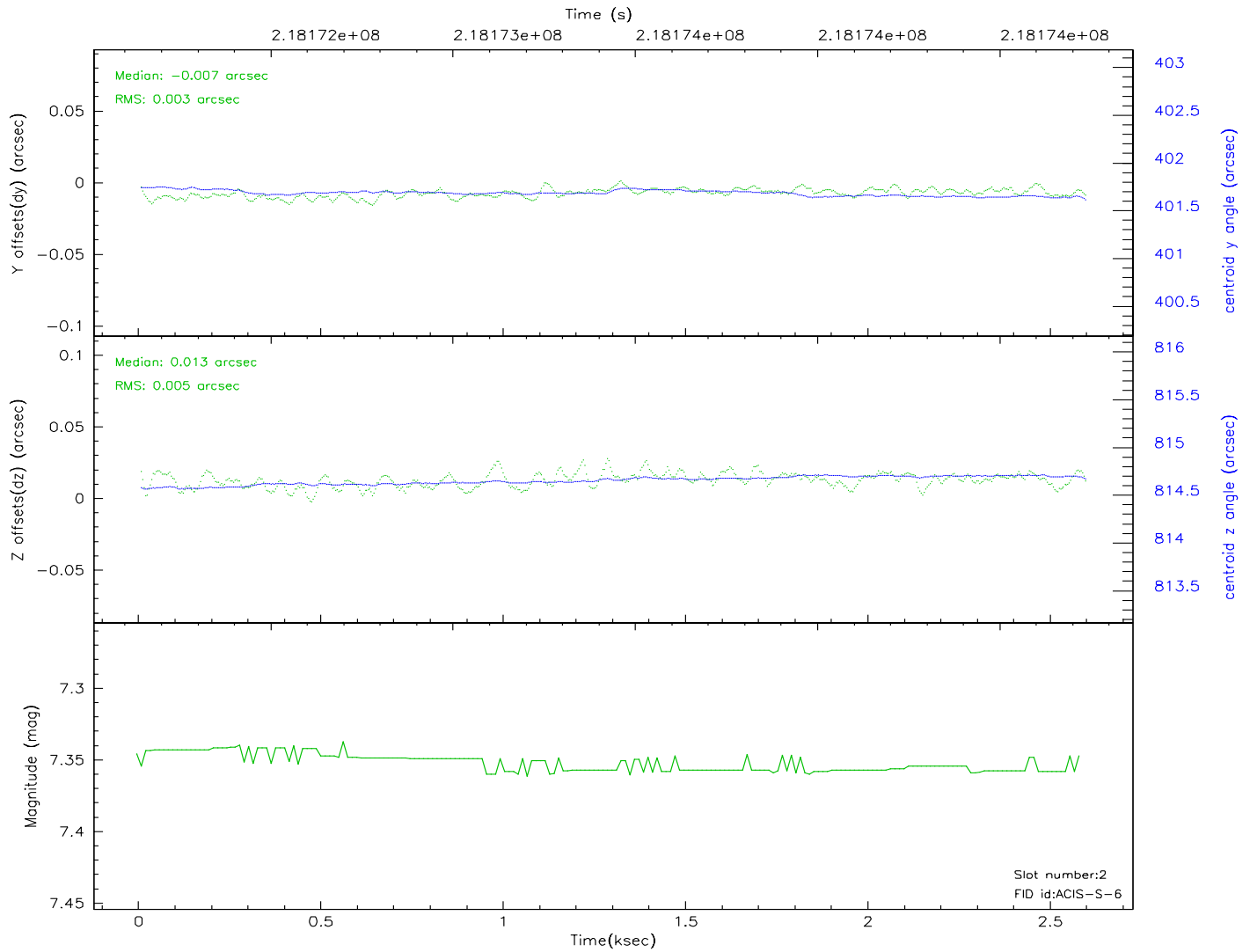
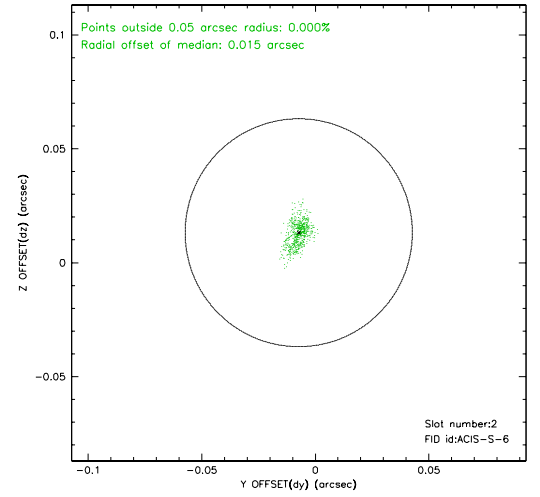
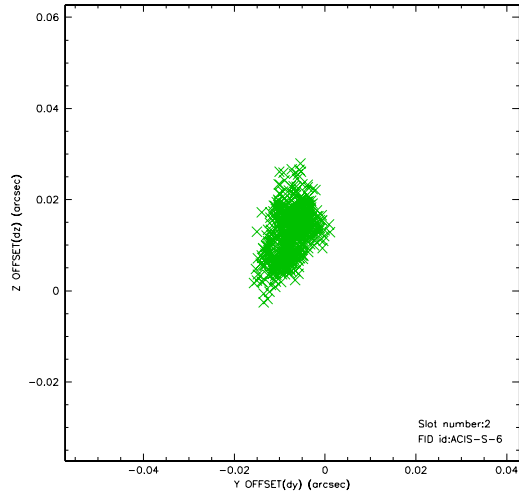
2.5.1 Slot 0



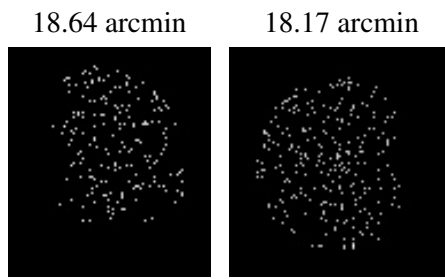
2.5.2 Slot 1



2.5.3 Slot 2



3 Point Sources



A Summary

A.1 Status

V&V Scientist	Jen Lauer
V&V Date (YYYY-MM-DD)	2006.04.11
V&V Edition	1
V&V Disposition and Status	OK
V&V Charge Time	2.588799

A.2 Comments