

# V&V Reference Report

## L2 ASCDS Version : 8.4.3.1

Observation 58807 - L2 Version 2  
Chandra X-Ray Center

L2 Processing Date : Apr 8 2012

## Contents

<b>1</b>	<b>Front</b>	<b>2</b>
<b>2</b>	<b>OBI</b>	<b>3</b>
2.1	OBI . . . . .	3
2.1.1	Images . . . . .	3
2.1.2	Bias . . . . .	3
2.1.3	Parameters . . . . .	4
2.1.4	Events . . . . .	4
2.2	Compared Parameters . . . . .	5
2.3	Star Slots . . . . .	6
2.4	FID Slots . . . . .	6
<b>A</b>	<b>Summary</b>	<b>7</b>
A.1	Status . . . . .	7
A.2	Comments . . . . .	7

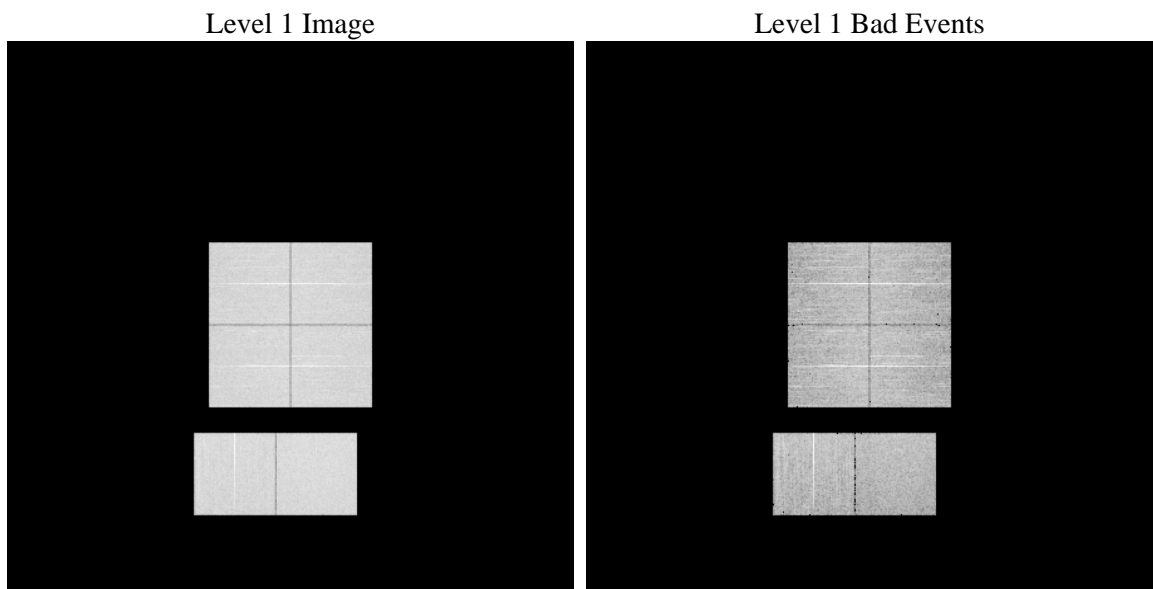
# 1 Front

seq_num	&#160	Sequence number
obs_id	58807	Observation id
title	ACIS-012367 diagnostics	Proposal title
observer	CHANDRA engineering request/realtime commanding	Principal investig
object	&#160	Source name
dtcycle	0	&#160
cycle	P	events from which exps? Prim/Second/Both
ra_targ	0.0	Observer's specified target RA [deg]
dec_targ	0.0	Observer's specified target Dec [deg]
ra_nom	339.77371352534	Nominal RA [deg]
dec_nom	24.584263894666	Nominal Dec [deg]
roll_nom	180.42594393878	Nominal Roll [deg]
revision	2	Processing version of data
ontime	7797.1857873797	Sum of GTIs [s]
livetime	7698.4531260383	Livetime [s]
ontime0	7797.1447473764	Sum of GTIs [s]
ontime1	7797.1037073731	Sum of GTIs [s]
ontime2	7793.8218266368	Sum of GTIs [s]
ontime3	7797.226827383	Sum of GTIs [s]
ontime6	7797.0216273665	Sum of GTIs [s]
ontime7	7797.1857873797	Sum of GTIs [s]
l2events	831237	Number of level 2 events

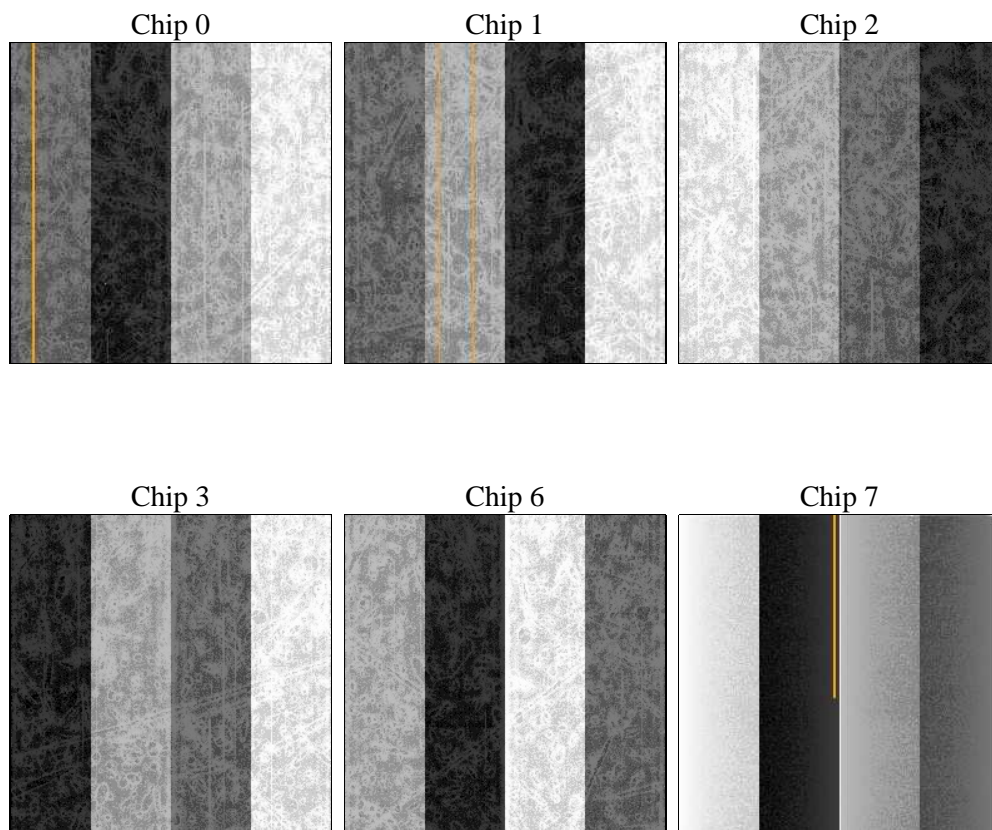
## 2 OBI

### 2.1 OBI

#### 2.1.1 Images



#### 2.1.2 Bias



### 2.1.3 Parameters

obi_num	0	Obi number	sched_exp_time	0.0	[s] Scheduled observation exposure time
ascdsver	8.4.3.1	Processing system revision	ontime	7797.1857873797	Sum of GTIs [s]
caldsver	4.4.9	&#160	ontime0	7797.1447473764	Sum of GTIs [s]
date	2012-04-08T18:36:30	Date and time of file creation	ontime1	7797.1037073731	Sum of GTIs [s]
revision	2	Processing version of data	ontime2	7793.8218266368	Sum of GTIs [s]
			ontime3	7797.226827383	Sum of GTIs [s]
			ontime6	7797.0216273665	Sum of GTIs [s]
			ontime7	7797.1857873797	Sum of GTIs [s]
			l1events	1247857	Number of level 1 events

### 2.1.4 Events

	ccd 0	ccd 1	ccd 2	ccd 3	ccd 6	ccd 7		ccd 0	ccd 1	ccd 2	ccd 3	ccd 6	ccd 7
level 1 events	201165	200044	205807	204935	212279	223627	grade 0 events	75820	75626	77496	78483	78172	37642
rejected events	61838	60064	65451	63542	66158	55030		37%	37%	37%	38%	36%	16%
rejected %	30%	30%	31%	31%	31%	24%	grade 1 events	506	444	529	591	477	168
								0%	0%	0%	0%	0%	0%
							grade 2 events	24653	25377	24021	24279	25607	36919
								12%	12%	11%	11%	12%	16%
							grade 3 events	9244	9024	9491	9296	9183	16538
								4%	4%	4%	4%	4%	7%
							grade 4 events	9087	8957	9353	9290	9271	16320
								4%	4%	4%	4%	4%	7%
							grade 5 events	3554	3701	3304	3735	3849	9669
								1%	1%	1%	1%	1%	4%
							grade 6 events	20523	20996	19995	20045	23888	61178
								10%	10%	9%	9%	11%	27%
							grade 7 events	57778	55919	61618	59216	61832	45193
								28%	27%	29%	28%	29%	20%

## 2.2 Compared Parameters

Parameter	Planned	Actual
Instrument	ACIS	ACIS
Detector	ACIS-012367	ACIS-012367
Grating	NONE	NONE
Data mode	FAINT	FAINT
Observation mode	SECONDARY	SECONDARY
[deg] Pointing RA	0	339.7737135253398
[deg] Pointing Dec	0	24.58426389466635
[deg] Pointing Roll	0.0	180.4259439387804
[mm] SIM focus pos	-0.782348	-0.6828225247311905
[mm] SIM defocus	0	0.8505141146731063
[mm] SIM translation stage pos	-233.592463	250.466033080201
[mm] SIM translation stage offset	0	-0.01005468664627074
[s] Observation start time (MET)	273459303.307957	273459302.28293
Observation start date	2006-09-01T00:55:03	2006-09-01T00:55:02
[s] Observation end time (MET)	273476982.508789	273476981.48376
Observation end date	2006-09-01T05:49:43	2006-09-01T05:49:41
Read mode	TIMED	TIMED

Parameter	Planned	Actual
Obspar format version number	7	7
Obspar file type	PREDICTED	ACTUAL
Obspar update status	NONE	UPDATED
On-chip summing requested	N	N
Subarray requested	NONE	NONE
Alternating exposures requested	N	N
[s] Primary exposure time	3.2	3.2

## **2.3 Star Slots**

## **2.4 FID Slots**

## A Summary

### A.1 Status

V&V Scientist	Jen Lauer
V&V Date (YYYY-MM-DD)	2012.04.09
V&V Edition	1
V&V Disposition and Status	OK
V&V Charge Time	7.7971857873797

### A.2 Comments