

# V&V Reference Report

## L2 ASCDS Version : 8.4.3.1

Observation 58787 - L2 Version 2  
Chandra X-Ray Center

L2 Processing Date : Apr 9 2012

## Contents

<b>1</b>	<b>Front</b>	<b>2</b>
<b>2</b>	<b>OBI</b>	<b>3</b>
2.1	OBI . . . . .	3
2.1.1	Images . . . . .	3
2.1.2	Bias . . . . .	3
2.1.3	Parameters . . . . .	4
2.1.4	Events . . . . .	4
2.2	Compared Parameters . . . . .	5
2.3	Star Slots . . . . .	6
2.4	FID Slots . . . . .	6
<b>A</b>	<b>Summary</b>	<b>7</b>
A.1	Status . . . . .	7
A.2	Comments . . . . .	7

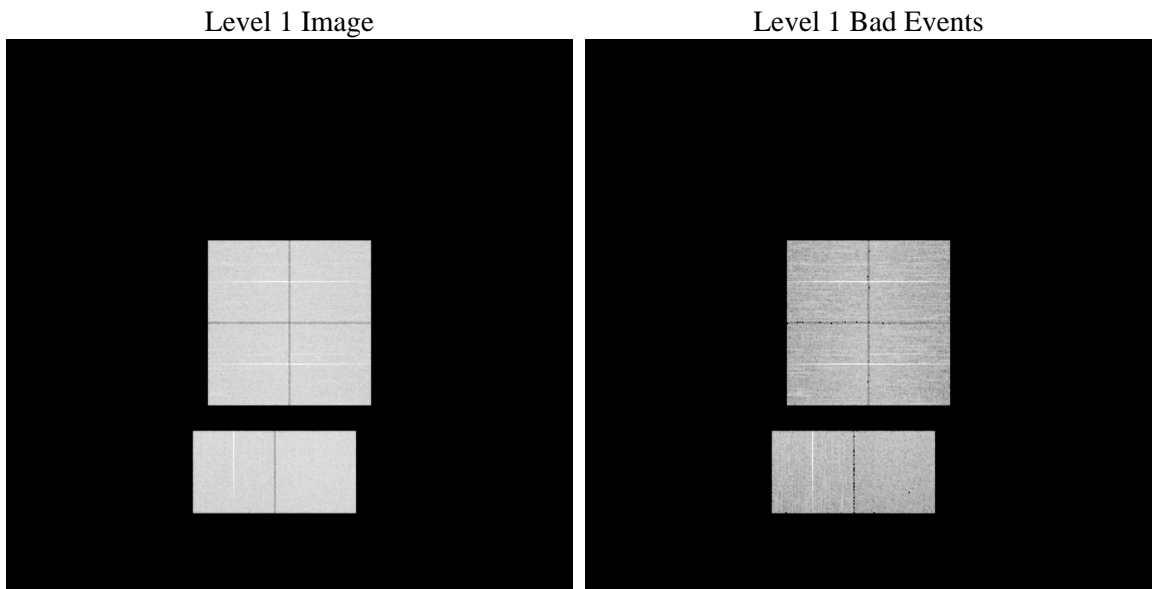
# 1 Front

seq_num	&#160	Sequence number
obs_id	58787	Observation id
title	ACIS-012367 diagnostics	Proposal title
observer	CHANDRA engineering request/realtime commanding	Principal investig
object	&#160	Source name
dtcycle	0	&#160
cycle	P	events from which exps? Prim/Second/Both
ra_targ	0.0	Observer's specified target RA [deg]
dec_targ	0.0	Observer's specified target Dec [deg]
ra_nom	325.02257150915	Nominal RA [deg]
dec_nom	-11.020632404722	Nominal Dec [deg]
roll_nom	283.87264074763	Nominal Roll [deg]
revision	2	Processing version of data
ontime	8159.3208865523	Sum of GTIs [s]
livetime	8056.0026525336	Livetime [s]
ontime0	8159.279846549	Sum of GTIs [s]
ontime1	8159.2388065457	Sum of GTIs [s]
ontime2	8159.1977665424	Sum of GTIs [s]
ontime3	8159.3619265556	Sum of GTIs [s]
ontime6	8159.1567265391	Sum of GTIs [s]
ontime7	8159.3208865523	Sum of GTIs [s]
l2events	850524	Number of level 2 events

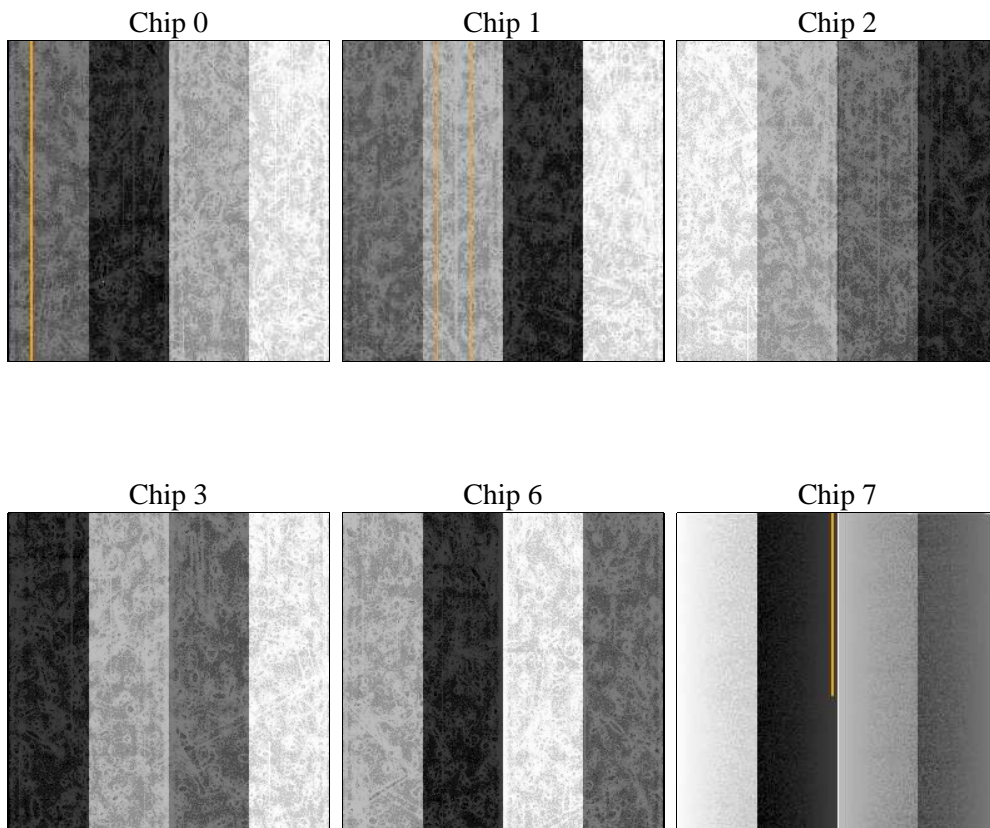
## 2 OBI

### 2.1 OBI

#### 2.1.1 Images



#### 2.1.2 Bias



### 2.1.3 Parameters

obi_num	0	Obi number	sched_exp_time	0.0	[s] Scheduled observation exposure time
ascdsver	8.4.3.1	Processing system revision	ontime	8159.3208865523	Sum of GTIs [s]
caldsver	4.4.9	&#160	ontime0	8159.279846549	Sum of GTIs [s]
date	2012-04-09T17:20:02	Date and time of file creation	ontime1	8159.2388065457	Sum of GTIs [s]
revision	2	Processing version of data	ontime2	8159.1977665424	Sum of GTIs [s]
			ontime3	8159.3619265556	Sum of GTIs [s]
			ontime6	8159.1567265391	Sum of GTIs [s]
			ontime7	8159.3208865523	Sum of GTIs [s]
			l1events	1317131	Number of level 1 events

### 2.1.4 Events

	ccd 0	ccd 1	ccd 2	ccd 3	ccd 6	ccd 7		ccd 0	ccd 1	ccd 2	ccd 3	ccd 6	ccd 7
level 1 events	212922	210829	216611	216819	221498	238452	grade 0 events	78344	77833	80702	80892	80830	39181
rejected events	70931	68346	72689	72500	72867	63398		36%	36%	37%	37%	36%	16%
rejected %	33%	32%	33%	33%	32%	26%	grade 1 events	511	434	636	625	479	177
								0%	0%	0%	0%	0%	0%
							grade 2 events	25246	26057	25011	25180	26243	38852
								11%	12%	11%	11%	11%	16%
							grade 3 events	9554	9501	9697	9814	9586	17508
								4%	4%	4%	4%	4%	7%
							grade 4 events	9527	9288	9626	9922	9583	17120
								4%	4%	4%	4%	4%	7%
							grade 5 events	3785	3936	3621	4192	4258	10347
								1%	1%	1%	1%	1%	4%
							grade 6 events	21320	21860	20965	20506	24607	64888
								10%	10%	9%	9%	11%	27%
							grade 7 events	64635	61920	66353	65688	65912	50379
								30%	29%	30%	30%	29%	21%

## 2.2 Compared Parameters

Parameter	Planned	Actual	Parameter	Planned	Actual
Instrument	ACIS	ACIS	Obspar format version number	7	7
Detector	ACIS-012367	ACIS-012367	Obspar file type	PREDICTED	ACTUAL
Grating	NONE	NONE	Obspar update status	NONE	UPDATED
Data mode	FAINT	FAINT	On-chip summing requested	N	N
Observation mode	SECONDARY	SECONDARY	Subarray requested	NONE	NONE
[deg] Pointing RA	0	325.0225715091525	Alternating exposures requested	N	N
[deg] Pointing Dec	0	-11.02063240472179	[s] Primary exposure time	3.2	3.2
[deg] Pointing Roll	0.0	283.8726407476327			
[mm] SIM focus pos	-0.782348	-0.7809083437167272			
[mm] SIM defocus	0	0.7524282956875696			
[mm] SIM translation stage pos	-233.592463	250.466033080201			
[mm] SIM translation stage offset	0	-0.01005468664627074			
[s] Observation start time (MET)	274645603.513692	274645602.48869			
Observation start date	2006-09-14T18:26:44	2006-09-14T18:26:42			
[s] Observation end time (MET)	274668301.11476	274668300.08976			
Observation end date	2006-09-15T00:45:01	2006-09-15T00:45:00			
Read mode	TIMED	TIMED			

## 2.3 Star Slots

## 2.4 FID Slots

## A Summary

### A.1 Status

V&V Scientist	Beth Sundheim
V&V Date (YYYY-MM-DD)	2012.04.09
V&V Edition	1
V&V Disposition and Status	OK
V&V Charge Time	8.1593208865523

### A.2 Comments