

V&V Reference Report

L2 ASCDS Version : 8.4.3

Observation 5857 - L2 Version 2
Chandra X-Ray Center

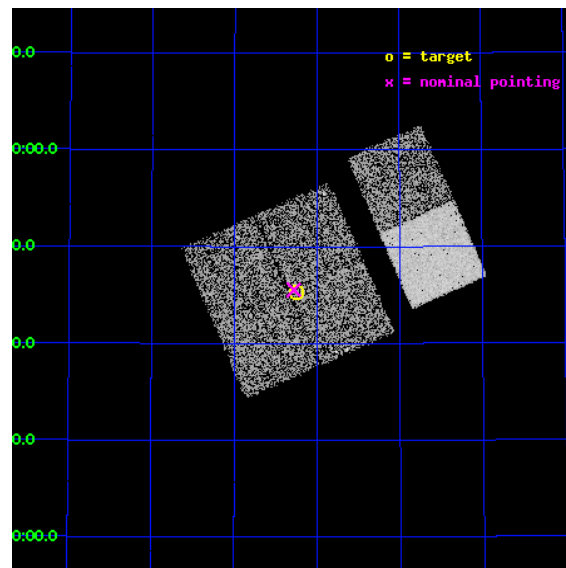
L2 Processing Date : Mar 24 2012

Contents

1	Front	2
2	OBI	3
2.1	OBI	3
2.1.1	Images	3
2.1.2	Bias	3
2.1.3	Parameters	4
2.1.4	Events	4
2.2	Compared Parameters	5
2.3	Aspect	6
2.4	Star Slots	9
2.4.1	Slot 3	9
2.4.2	Slot 4	10
2.4.3	Slot 5	11
2.4.4	Slot 6	12
2.4.5	Slot 7	13
2.5	FID Slots	14
2.5.1	Slot 0	14
2.5.2	Slot 1	15
2.5.3	Slot 2	16
A	Summary	17
A.1	Status	17
A.2	Comments	17

1 Front

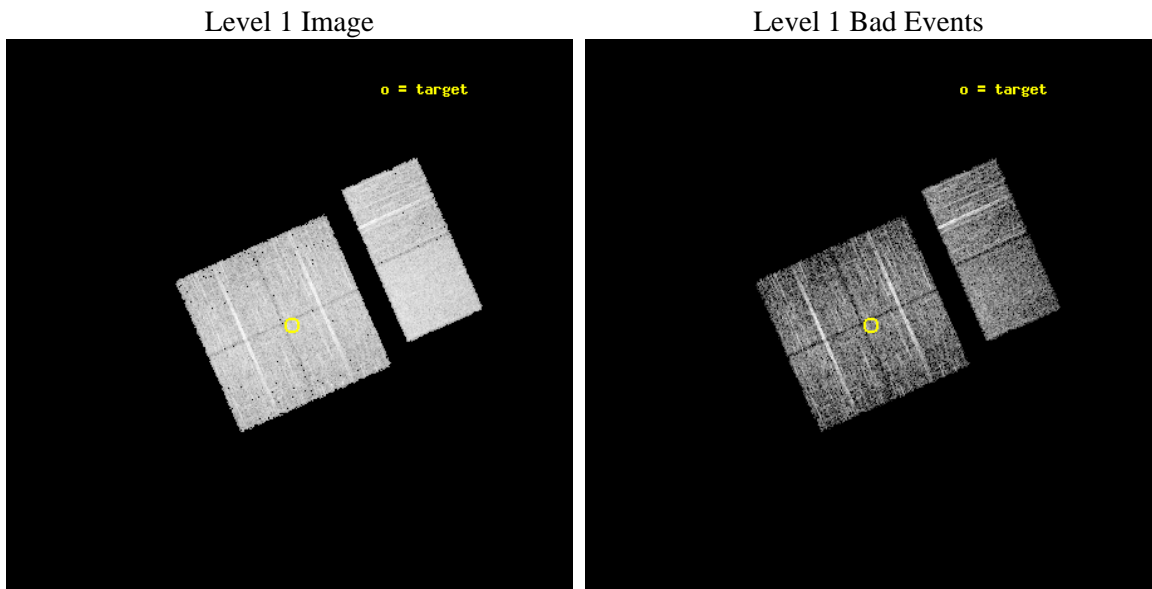
seq_num	900357	Sequence number
obs_id	5857	Observation id
title	The Spectral Energy Distributions of AGN: A Shallow Survey of the ELAIS-N1 Field	Proposal title
observer	Prof Kirpal Nandra	Principal investigator
object	N1_03	Source name
dtcycle	0	
cycle	P	events from which exps? Prim/Second/Both
ra_targ	241.564167	Observer's specified target RA [deg]
dec_targ	54.756194	Observer's specified target Dec [deg]
ra_nom	241.56999973472	Nominal RA [deg]
dec_nom	54.759393515642	Nominal Dec [deg]
roll_nom	66.193207169525	Nominal Roll [deg]
revision	2	Processing version of data
ontime	4556.7999830246	Sum of GTIs [s]
livetime	4499.099037864	Livetime [s]
ontime0	4556.7999830246	Sum of GTIs [s]
ontime1	4556.7999830246	Sum of GTIs [s]
ontime2	4553.5590026975	Sum of GTIs [s]
ontime3	4556.7999830246	Sum of GTIs [s]
ontime6	4556.7999830246	Sum of GTIs [s]
ontime7	4556.7999830246	Sum of GTIs [s]
l2events	40923	Number of level 2 events



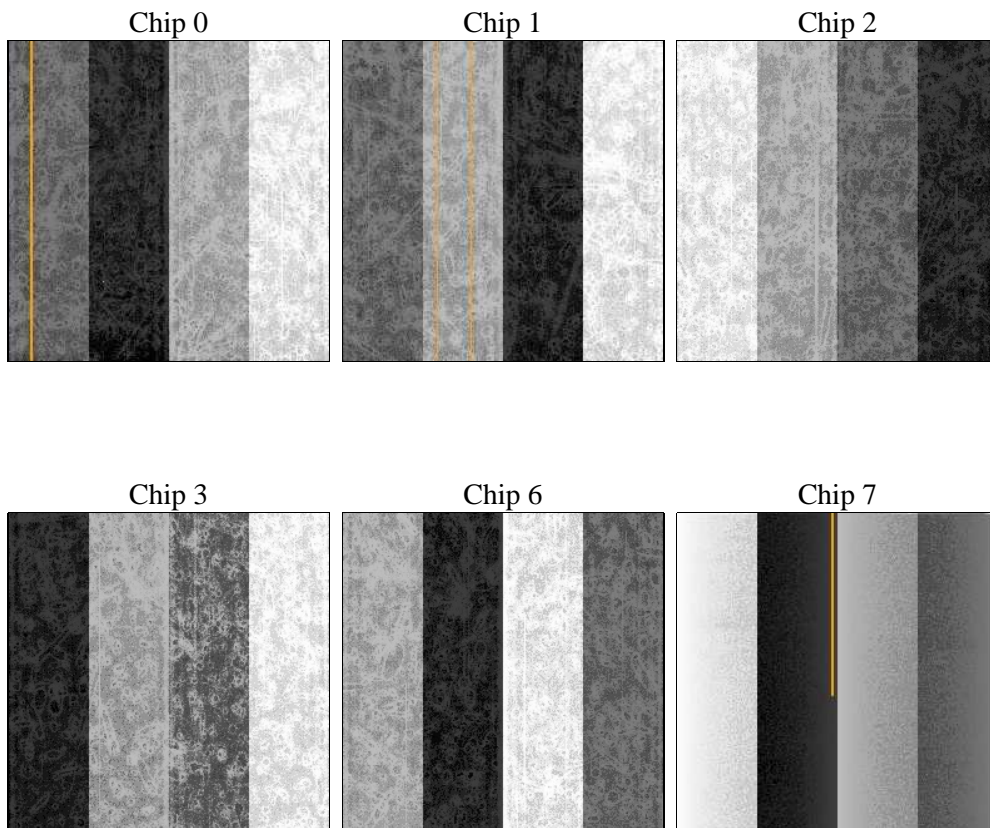
2 OBI

2.1 OBI

2.1.1 Images



2.1.2 Bias



2.1.3 Parameters

obi_num	0	Obi number	sched_exp_time	4800.000000	[s] Scheduled observation exposure time
ascdsver	8.4.3	Processing system revision	ontime	4556.7999830246	Sum of GTIs [s]
caldsver	4.4.8	 	ontime0	4556.7999830246	Sum of GTIs [s]
date	2012-03-24T23:27:37	Date and time of file creation	ontime1	4556.7999830246	Sum of GTIs [s]
revision	2	Processing version of data	ontime2	4553.5590026975	Sum of GTIs [s]
			ontime3	4556.7999830246	Sum of GTIs [s]
			ontime6	4556.7999830246	Sum of GTIs [s]
			ontime7	4556.7999830246	Sum of GTIs [s]
			l1events	235791	Number of level 1 events

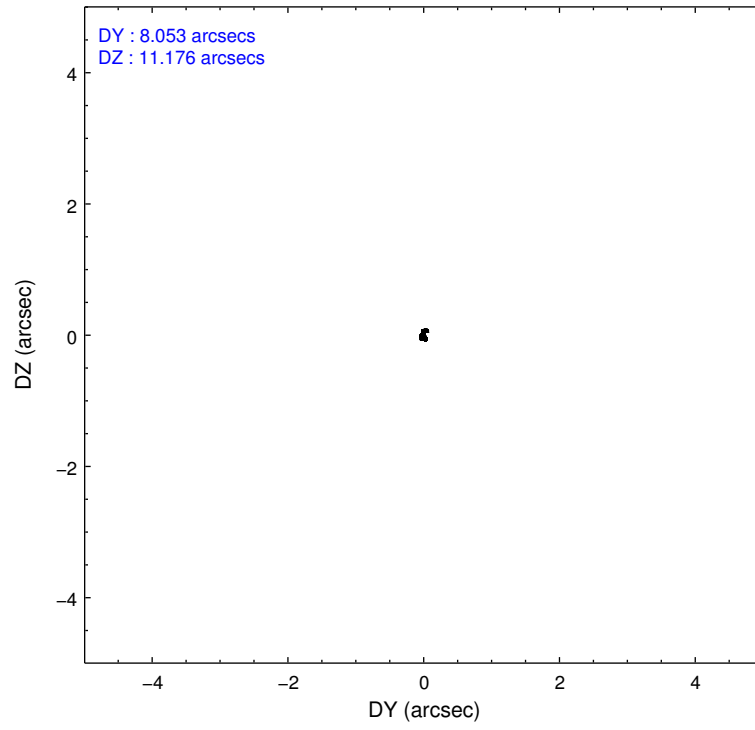
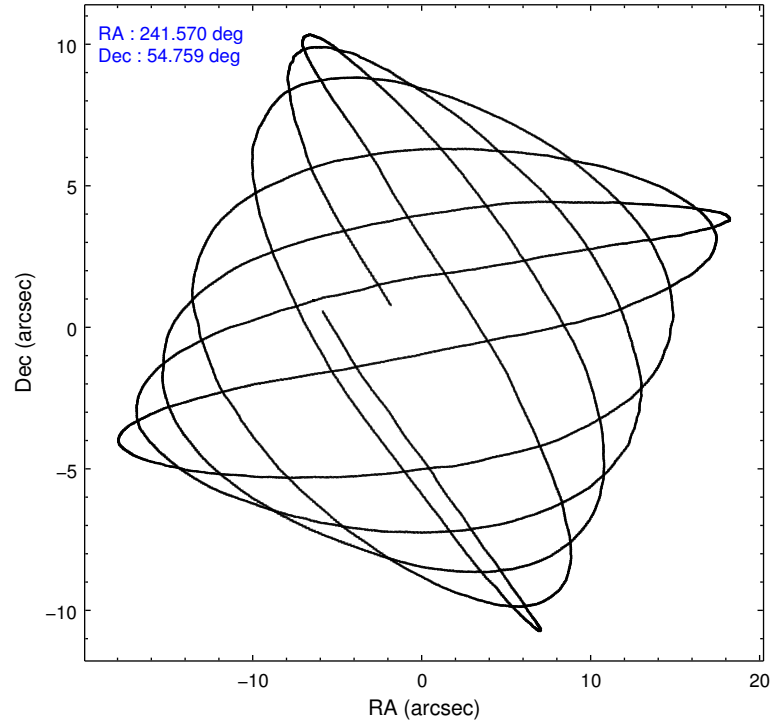
2.1.4 Events

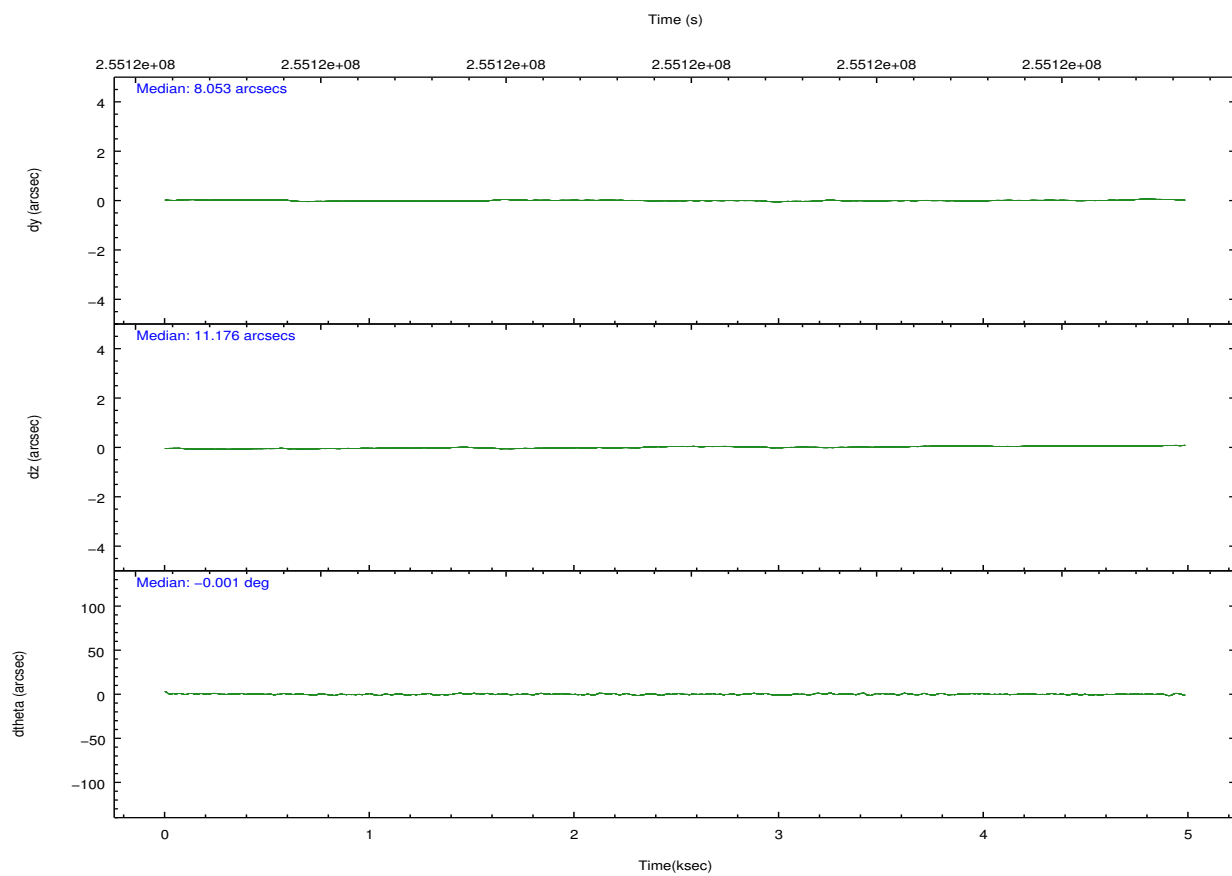
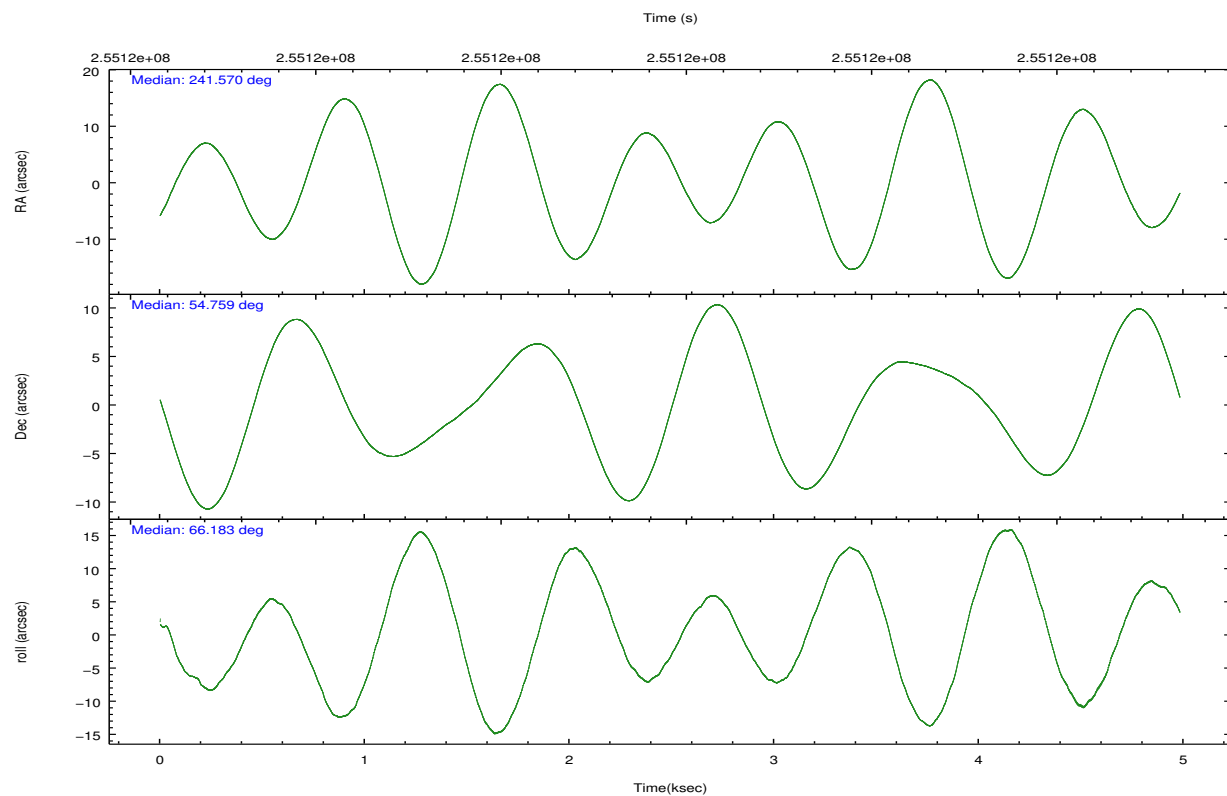
	ccd 0	ccd 1	ccd 2	ccd 3	ccd 6	ccd 7		ccd 0	ccd 1	ccd 2	ccd 3	ccd 6	ccd 7
level 1 events	35401	35662	37391	35431	39782	52124	grade 0 events	1955	1897	2134	2066	1805	1889
rejected events	30859	30726	32762	30894	35293	30626		5%	5%	5%	5%	4%	3%
rejected %	87%	86%	87%	87%	88%	58%	grade 1 events	31	14	32	21	31	36
								0%	0%	0%	0%	0%	0%
							grade 2 events	931	1097	938	847	940	4351
								2%	3%	2%	2%	2%	8%
							grade 3 events	442	490	415	450	454	1809
								1%	1%	1%	1%	1%	3%
							grade 4 events	407	505	405	432	424	1856
								1%	1%	1%	1%	1%	3%
							grade 5 events	1572	1661	1486	1741	1838	5011
								4%	4%	3%	4%	4%	9%
							grade 6 events	813	953	740	750	877	11618
								2%	2%	1%	2%	2%	22%
							grade 7 events	29250	29045	31241	29124	33413	25554
								82%	81%	83%	82%	83%	49%

2.2 Compared Parameters

Parameter	Planned	Actual	Parameter	Planned	Actual
Instrument	ACIS	ACIS	Obspar format version number	7	7
Detector	ACIS-012367	ACIS-012367	Obspar file type	PREDICTED	ACTUAL
Grating	NONE	NONE	Obspar update status	NONE	UPDATED
Data mode	VFAINT	VFAINT	Number of optional ACIS chips dropped	0	0
Observation mode	POINTING	POINTING	On-chip summing requested	N	N
[deg] Pointing RA	241.575322	241.5699997347206	Subarray requested	NONE	NONE
[deg] Pointing Dec	54.732165	54.75939351564226	Alternating exposures requested	N	N
[deg] Pointing Roll	65.980178	66.193207169525	[s] Primary exposure time	0.000000	3.2
[mm] SIM focus pos	-0.782348	-0.7809083437167272			
[mm] SIM defocus	0	0.001439871863259334			
[mm] SIM translation stage pos	-233.592463	-233.5874344608287			
[mm] SIM translation stage offset	0	-0.005018542100998502			
[s] Observation start time (MET)	255116602.184000	255116225.83903			
Observation start date	2006-01-31T17:42:17	2006-01-31T17:37:05			
[s] Observation end time (MET)	255121402.184000	255121536.36428			
Observation end date	2006-01-31T19:02:17	2006-01-31T19:05:36			
Read mode	TIMED	TIMED			

2.3 Aspect



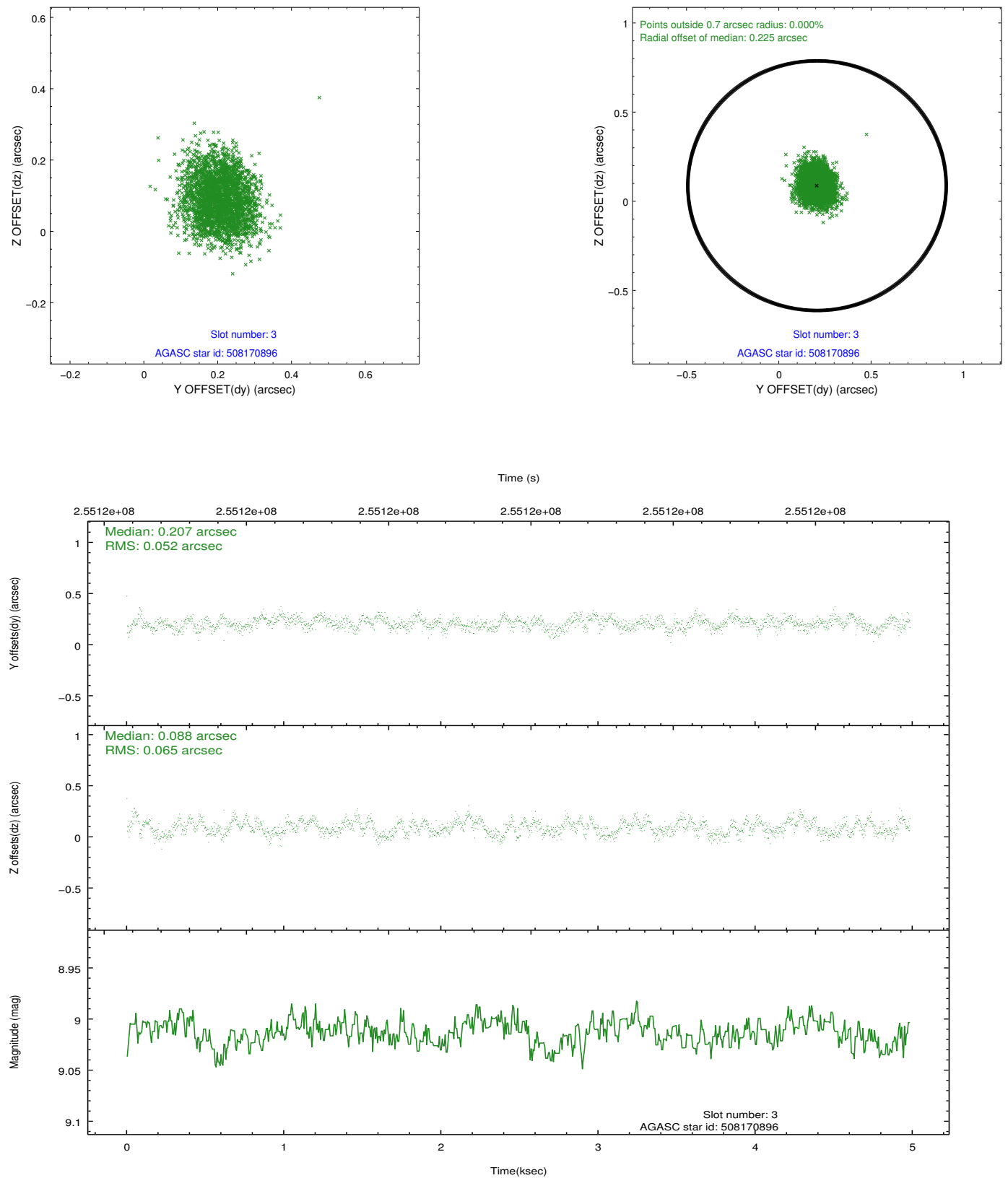


Slot Statistics

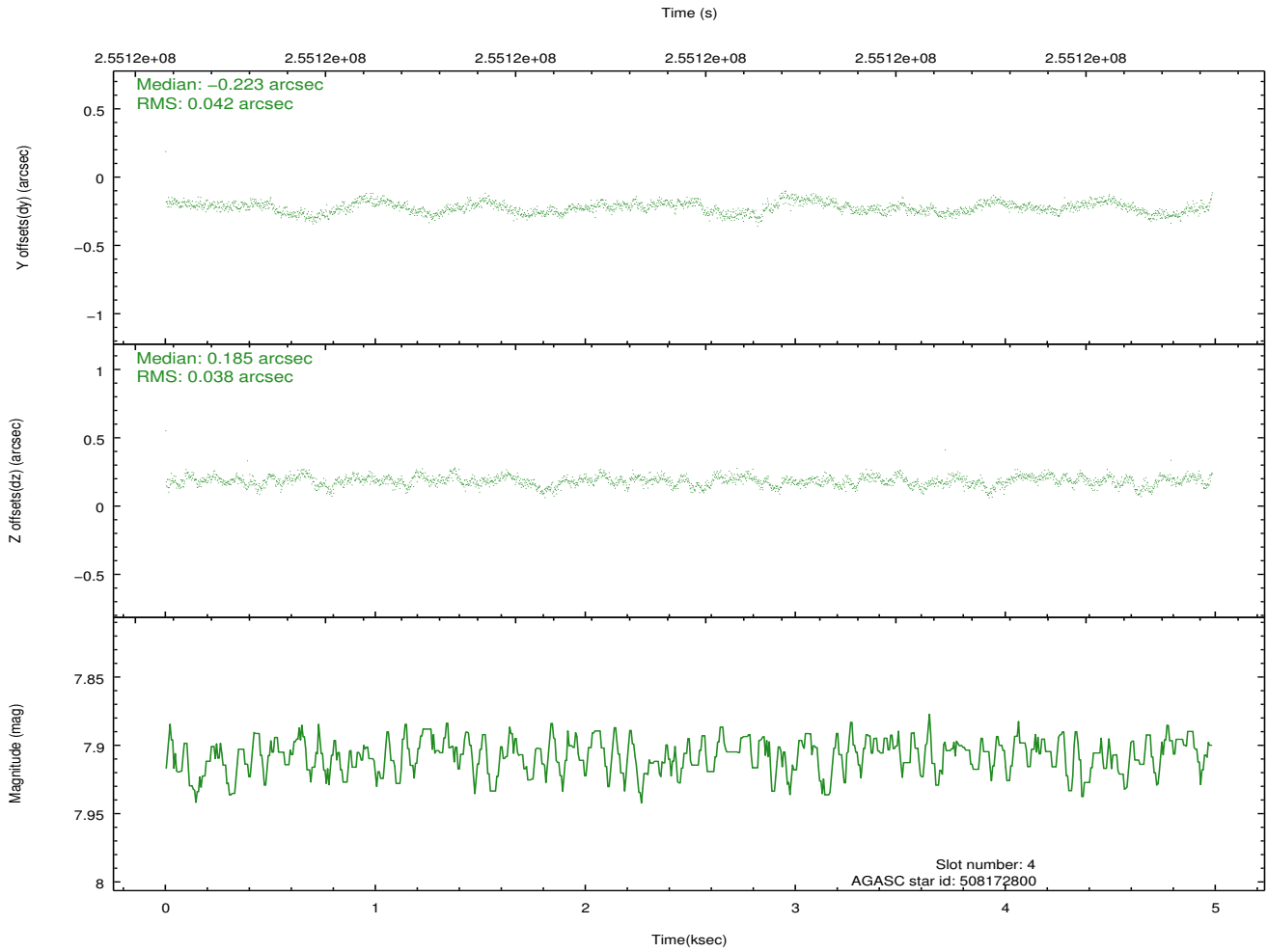
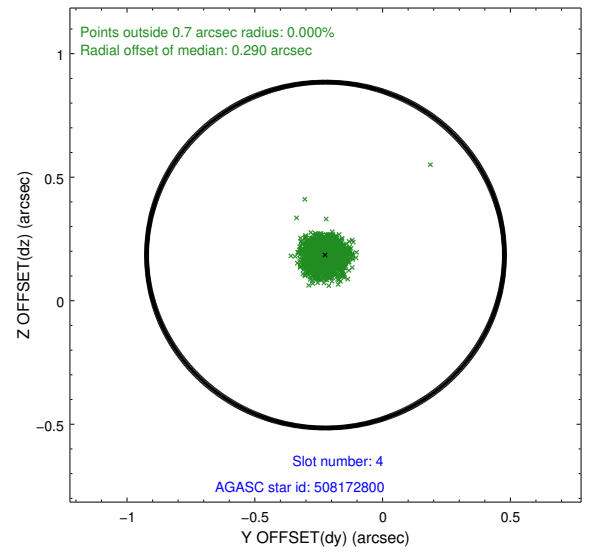
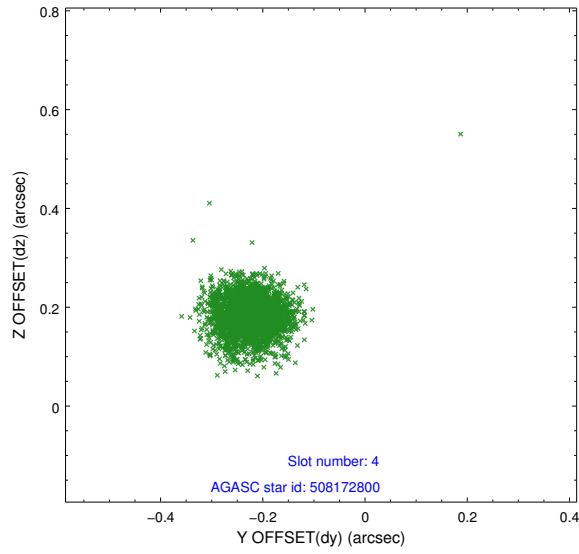
slot	status	id	mag	n_pts	med_dy	med_dz	dr1	dr2	ra	dec	mean_y	mean_z
0	FID	ACIS-I-1	7.25	1216	-0.008	-0.047	0.009	0.014	0.000000	0.000000	931.58	-834.74
1	FID	ACIS-I-4	7.17	1216	0.148	0.060	0.008	0.013	0.000000	0.000000	2152.49	1064.54
2	FID	ACIS-I-5	7.22	1216	-0.239	0.058	0.006	0.012	0.000000	0.000000	-1815.05	1063.85
3	GUIDE	508170896	9.01	2431	0.207	0.088	0.089	0.139	242.052968	54.527984	-261.48	-1209.14
4	GUIDE	508172800	7.91	2432	-0.223	0.185	0.060	0.093	242.573753	54.657892	615.86	-2002.02
5	GUIDE	508567136	8.76	2430	-0.060	-0.119	0.082	0.132	240.841632	55.181215	870.10	2038.36
6	GUIDE	508569792	9.60	2424	0.013	-0.045	0.122	0.206	241.118764	55.014289	547.26	1276.44
7	GUIDE	508173376	8.32	2429	0.079	-0.105	0.079	0.120	241.134254	54.422412	-1391.66	391.42

2.4 Star Slots

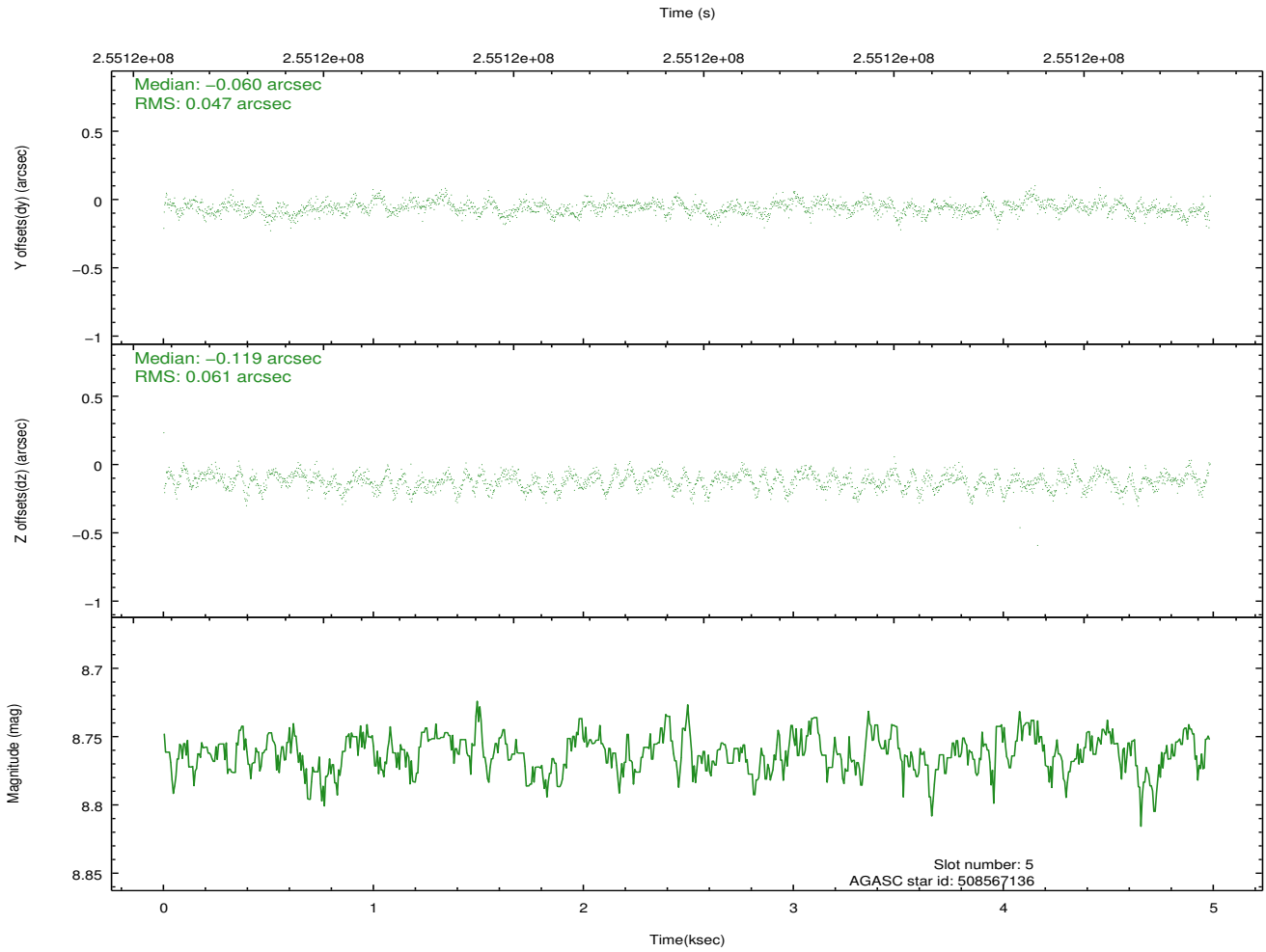
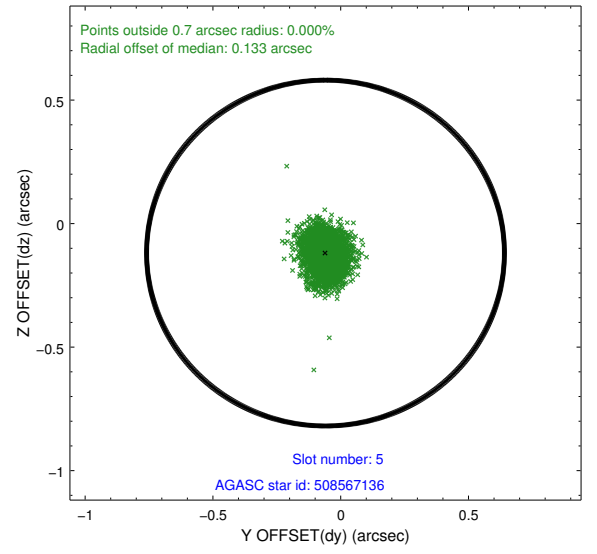
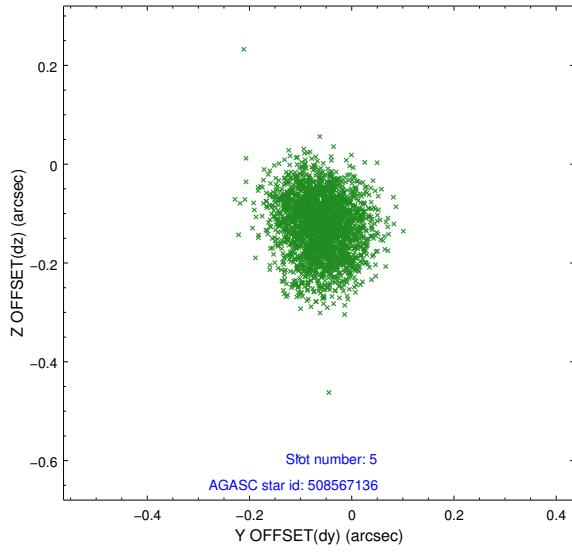
2.4.1 Slot 3



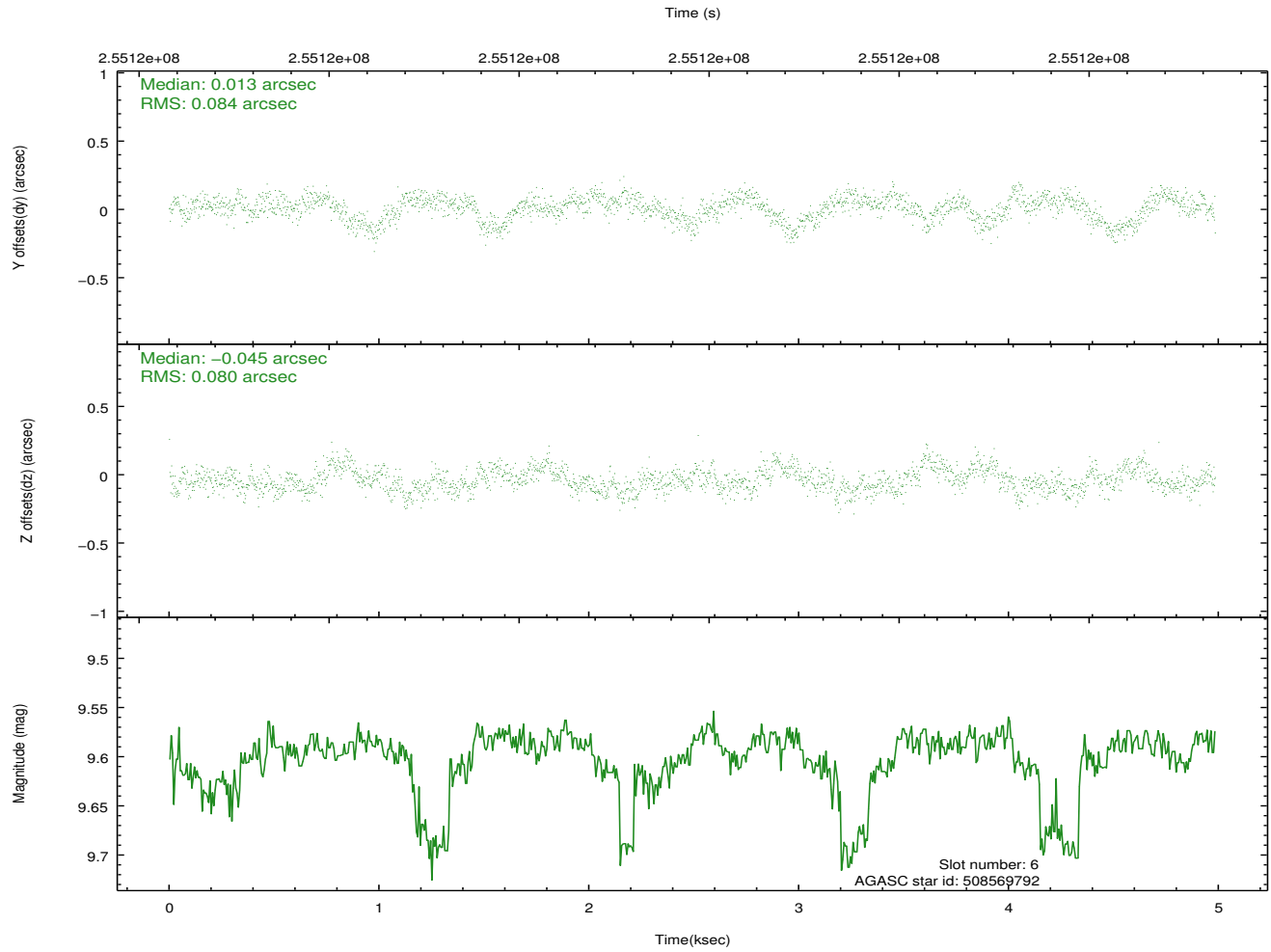
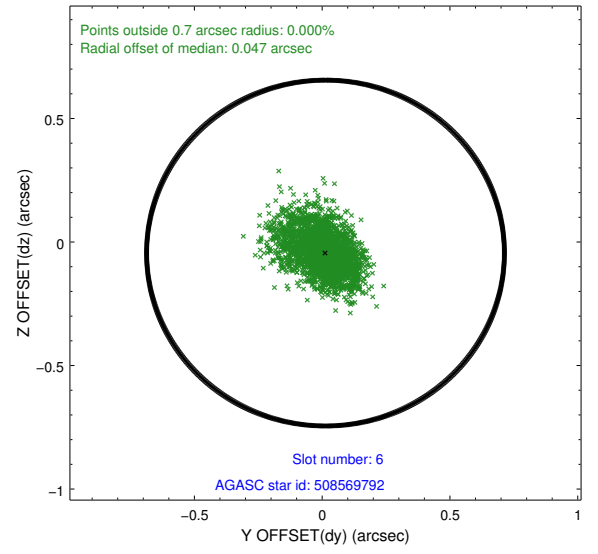
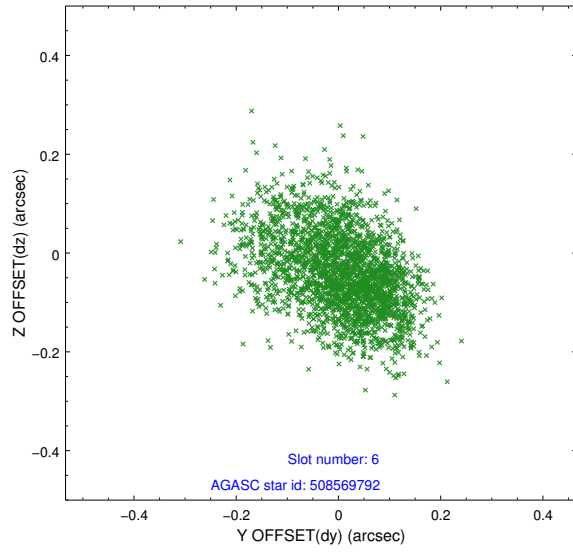
2.4.2 Slot 4



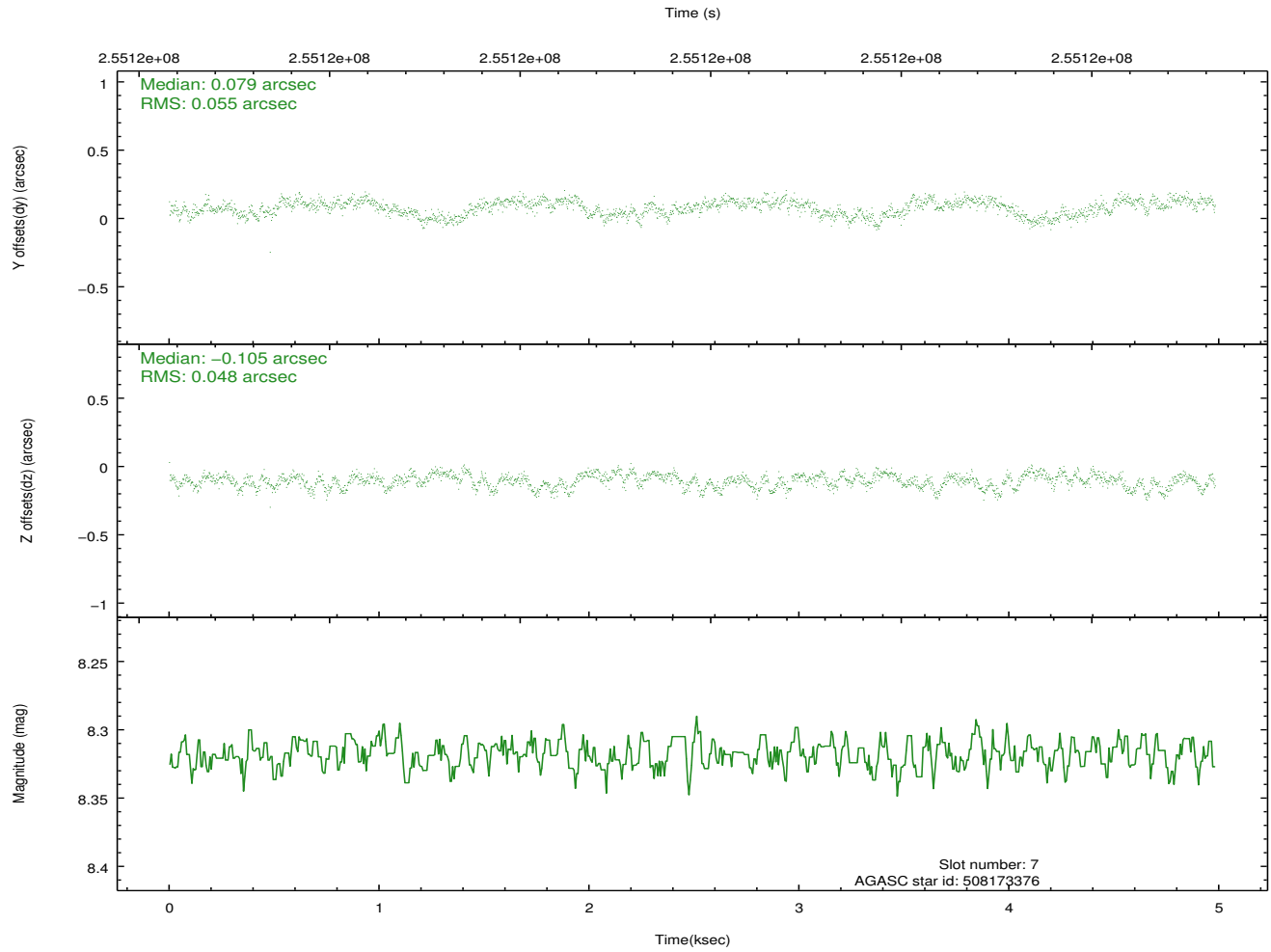
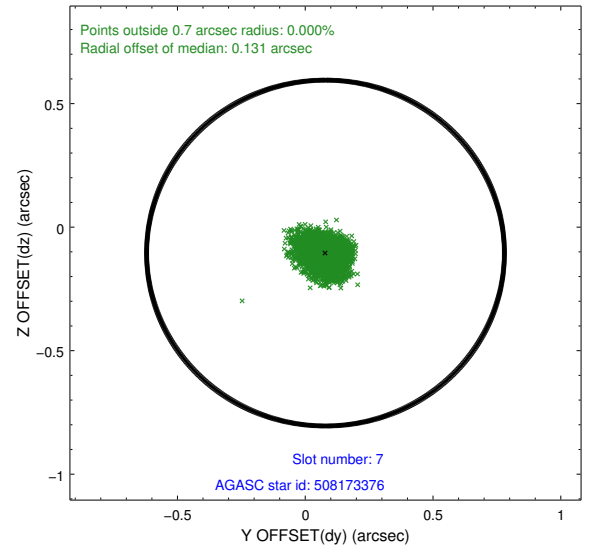
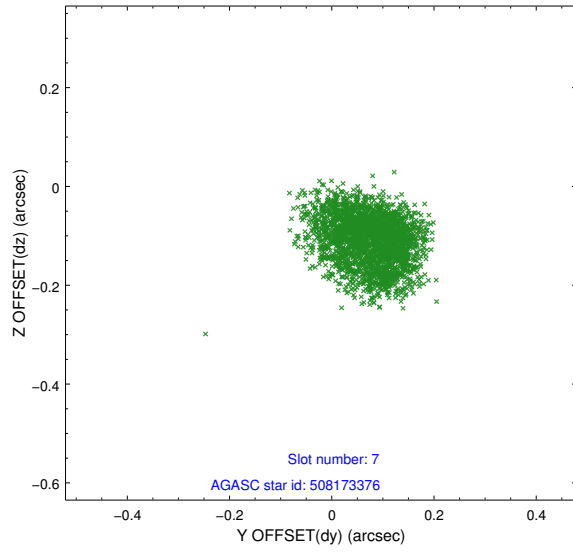
2.4.3 Slot 5



2.4.4 Slot 6

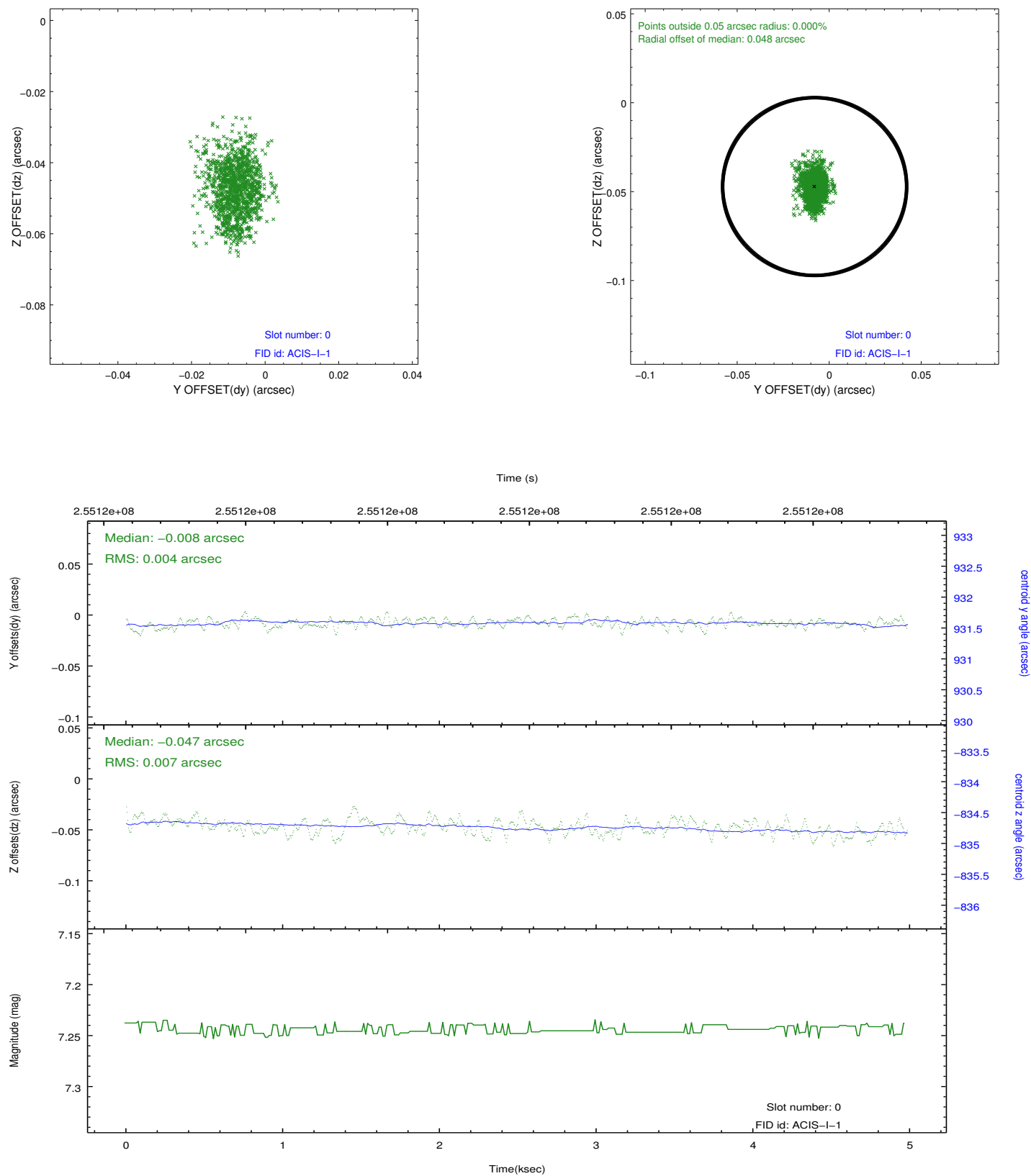


2.4.5 Slot 7

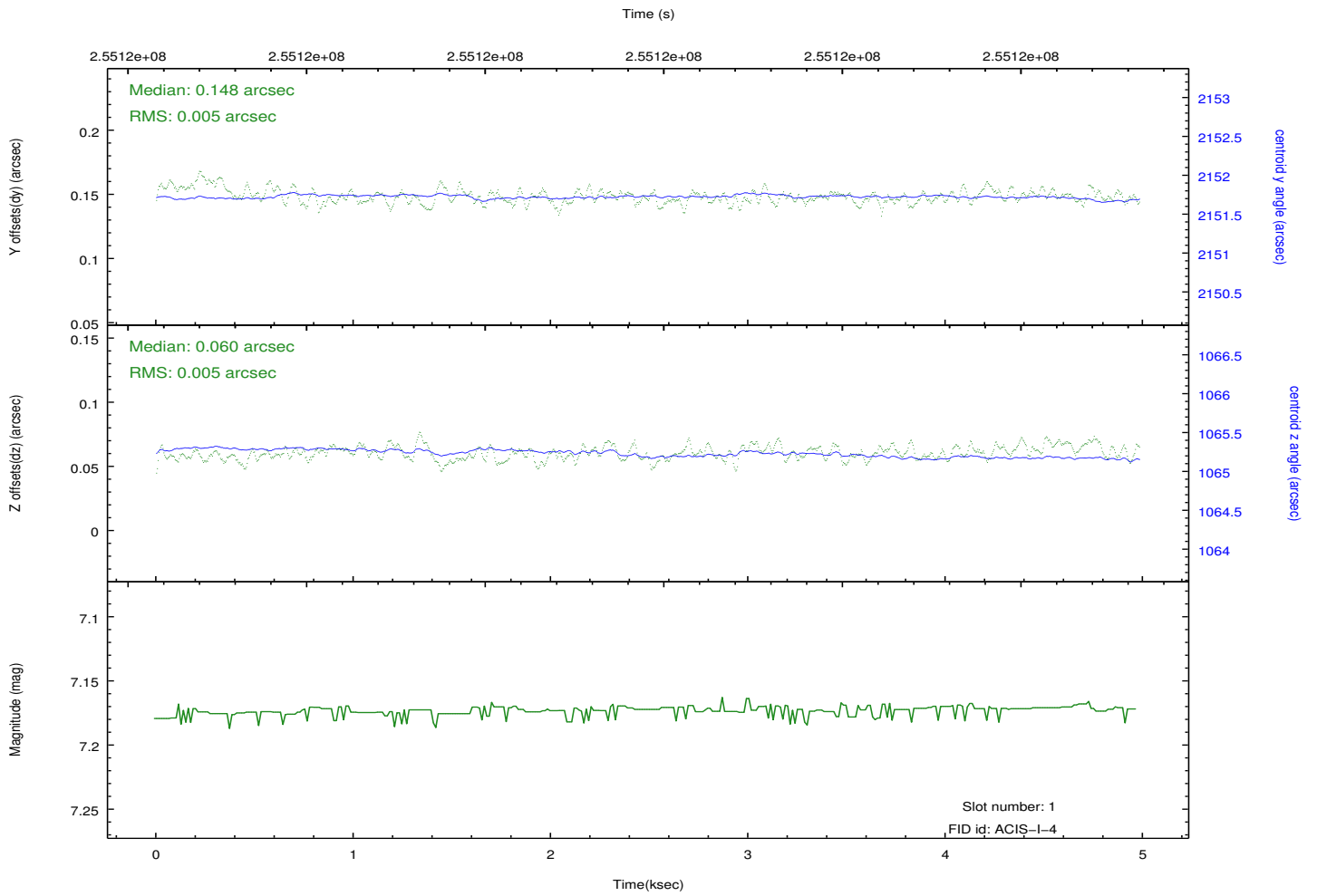
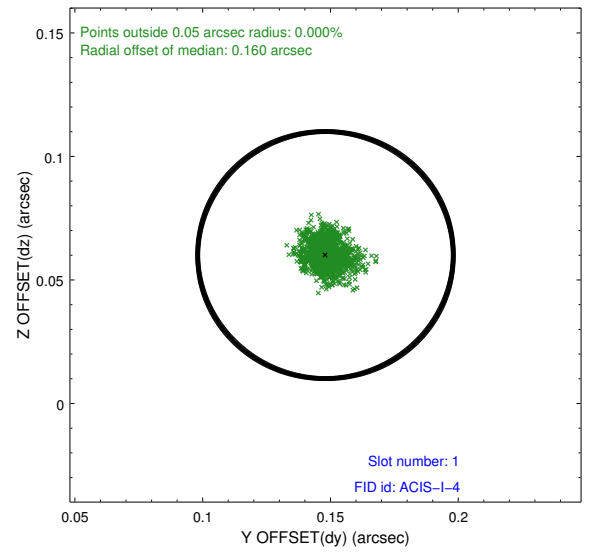
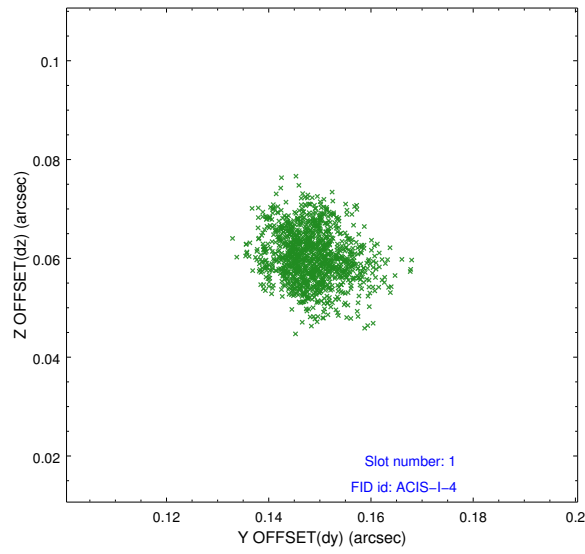


2.5 FID Slots

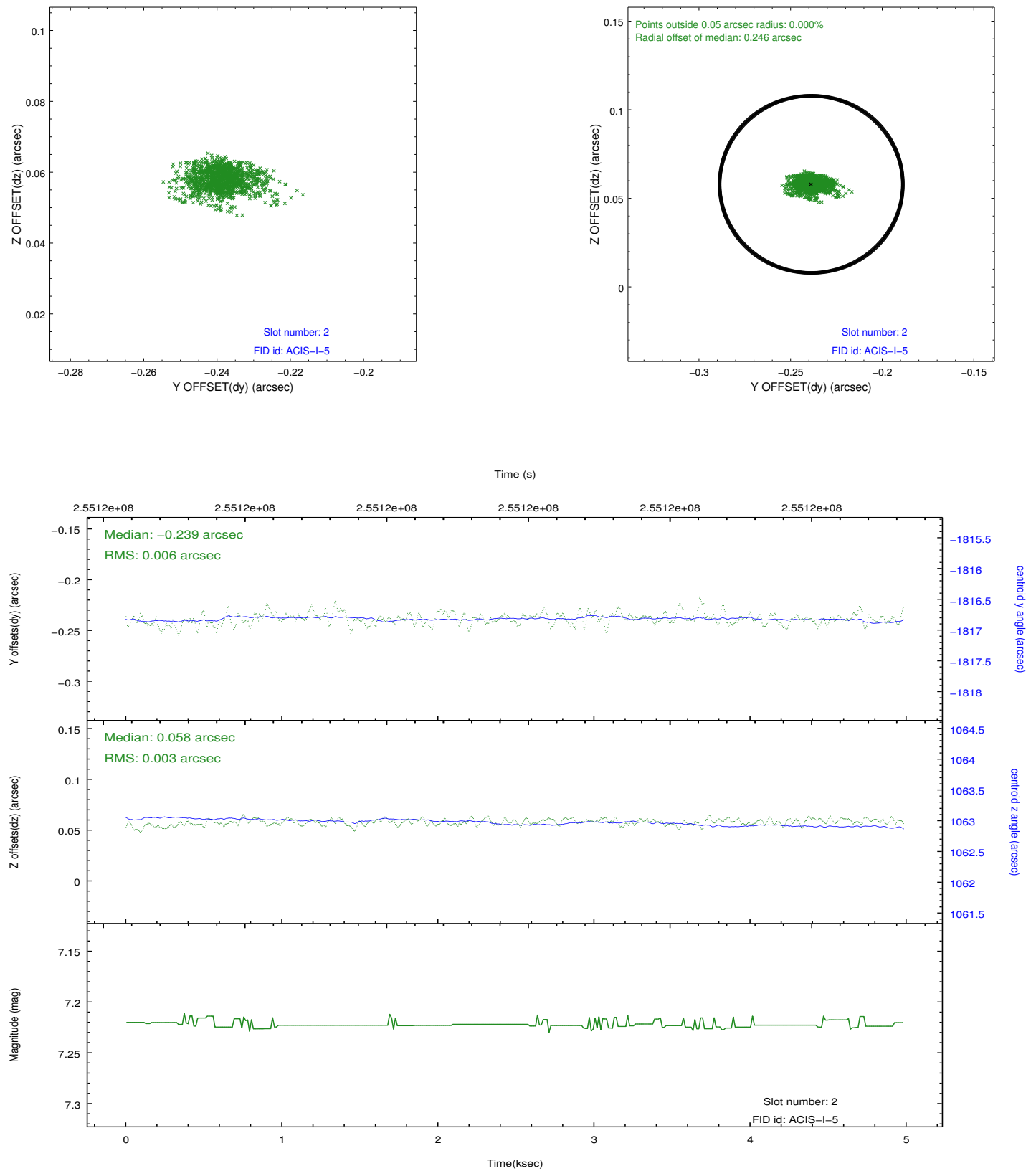
2.5.1 Slot 0



2.5.2 Slot 1



2.5.3 Slot 2



A Summary

A.1 Status

V&V Scientist	Jen Lauer
V&V Date (YYYY-MM-DD)	2012.03.26
V&V Edition	1
V&V Disposition and Status	OK
V&V Charge Time	4.55679998

A.2 Comments