

# V&V Reference Report

## L2 ASCDS Version : 8.4.4

Observation 58367 - L2 Version 2  
Chandra X-Ray Center

L2 Processing Date : Apr 25 2012

## Contents

<b>1</b>	<b>Front</b>	<b>2</b>
<b>2</b>	<b>OBI</b>	<b>3</b>
2.1	OBI . . . . .	3
2.1.1	Images . . . . .	3
2.1.2	Bias . . . . .	3
2.1.3	Parameters . . . . .	4
2.1.4	Events . . . . .	4
2.2	Compared Parameters . . . . .	5
2.3	Star Slots . . . . .	6
2.4	FID Slots . . . . .	6
<b>A</b>	<b>Summary</b>	<b>7</b>
A.1	Status . . . . .	7
A.2	Comments . . . . .	7

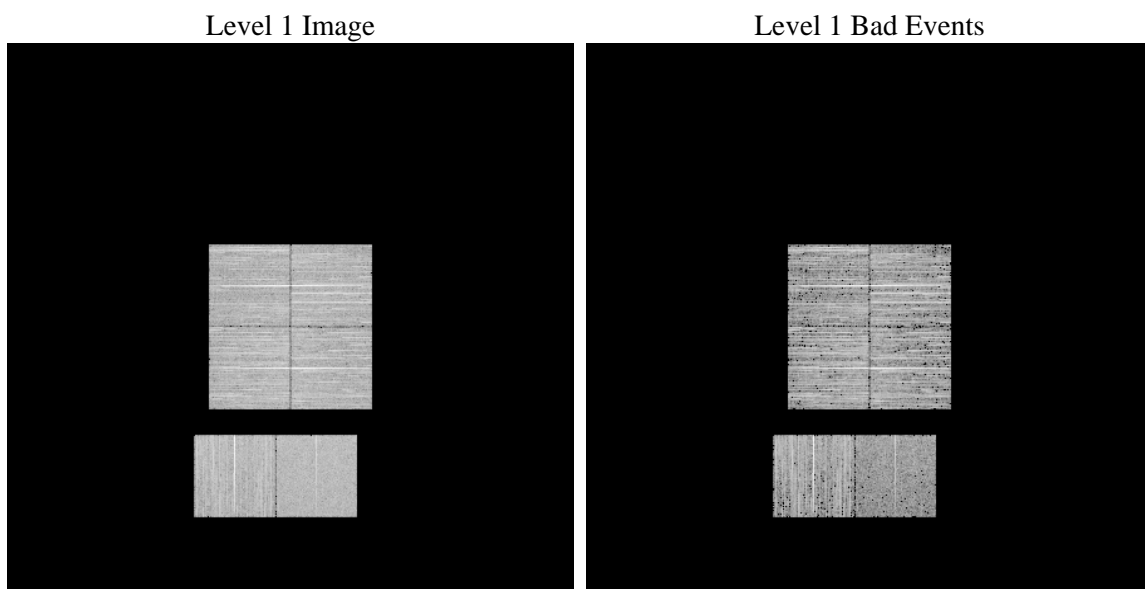
# 1 Front

seq_num	&#160	Sequence number
obs_id	58367	Observation id
title	ACIS-012367 diagnostics	Proposal title
observer	CHANDRA engineering request/realtime commanding	Principal investig
object	&#160	Source name
dtcycle	0	&#160
cycle	P	events from which exps? Prim/Second/Both
ra_targ	0.0	Observer's specified target RA [deg]
dec_targ	0.0	Observer's specified target Dec [deg]
ra_nom	286.99239472023	Nominal RA [deg]
dec_nom	-37.97189810927	Nominal Dec [deg]
roll_nom	69.152101978909	Nominal Roll [deg]
revision	2	Processing version of data
ontime	2796.4701176286	Sum of GTIs [s]
livetime	2761.059529167	Livetime [s]
ontime0	2294.0760102868	Sum of GTIs [s]
ontime1	2372.4245727062	Sum of GTIs [s]
ontime2	2268.7127643228	Sum of GTIs [s]
ontime3	2323.3270526528	Sum of GTIs [s]
ontime6	2491.6532378197	Sum of GTIs [s]
ontime7	2796.4701176286	Sum of GTIs [s]
l2events	219854	Number of level 2 events

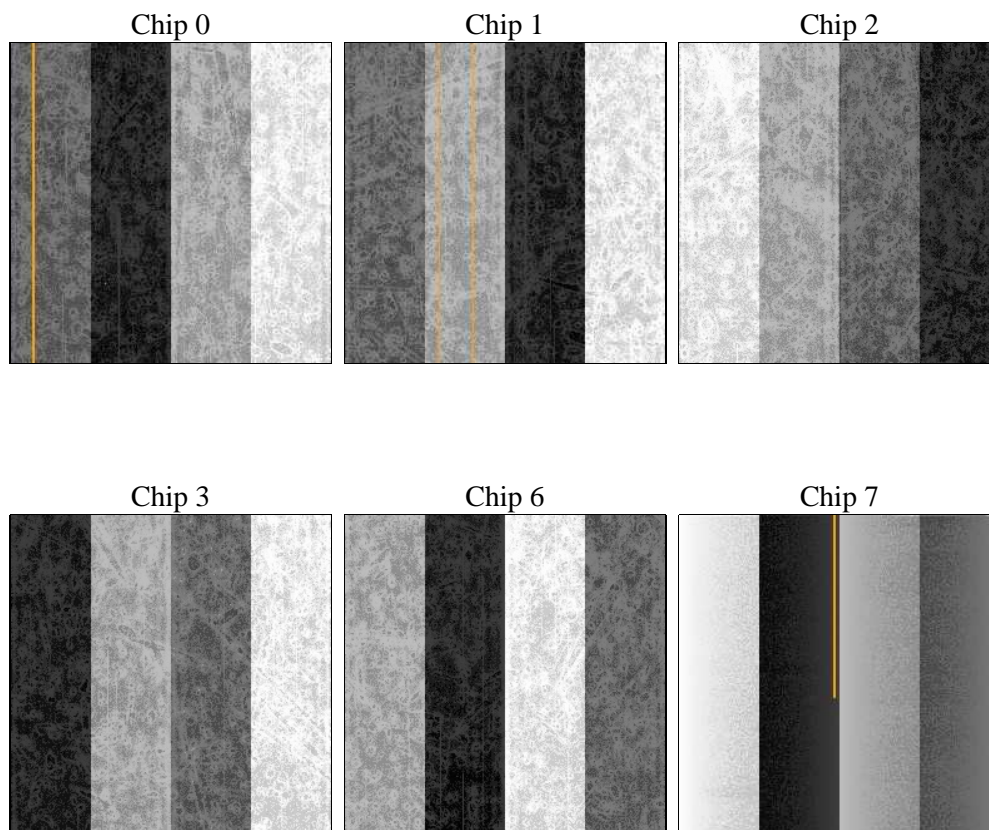
## 2 OBI

### 2.1 OBI

#### 2.1.1 Images



#### 2.1.2 Bias



### 2.1.3 Parameters

obi_num	0	Obi number	sched_exp_time	0.0	[s] Scheduled observation exposure time
ascdsver	8.4.4	Processing system revision	ontime	2796.4701176286	Sum of GTIs [s]
caldsver	4.4.9	&#160	ontime0	2294.0760102868	Sum of GTIs [s]
date	2012-04-25T23:47:31	Date and time of file creation	ontime1	2372.4245727062	Sum of GTIs [s]
revision	2	Processing version of data	ontime2	2268.7127643228	Sum of GTIs [s]
			ontime3	2323.3270526528	Sum of GTIs [s]
			ontime6	2491.6532378197	Sum of GTIs [s]
			ontime7	2796.4701176286	Sum of GTIs [s]
			l1events	523198	Number of level 1 events

### 2.1.4 Events

	ccd 0	ccd 1	ccd 2	ccd 3	ccd 6	ccd 7		ccd 0	ccd 1	ccd 2	ccd 3	ccd 6	ccd 7
level 1 events	82238	88567	91156	87474	89634	84129	grade 0 events	18193	18808	18537	19310	20818	11291
rejected events	48181	53460	57208	52407	50890	29349		22%	21%	20%	22%	23%	13%
rejected %	58%	60%	62%	59%	56%	34%	grade 1 events	128	108	140	153	122	45
								0%	0%	0%	0%	0%	0%
							grade 2 events	6173	6572	6055	6258	6871	13177
								7%	7%	6%	7%	7%	15%
							grade 3 events	2375	2245	2261	2281	2463	5088
								2%	2%	2%	2%	2%	6%
							grade 4 events	2295	2215	2270	2328	2414	5121
								2%	2%	2%	2%	2%	6%
							grade 5 events	1090	1210	1017	1233	1291	3646
								1%	1%	1%	1%	1%	4%
							grade 6 events	5021	5267	4825	4890	6178	20103
								6%	5%	5%	5%	6%	23%
							grade 7 events	46963	52142	56051	51021	49477	25658
								57%	58%	61%	58%	55%	30%

## 2.2 Compared Parameters

Parameter	Planned	Actual
Instrument	ACIS	ACIS
Detector	ACIS-012367	ACIS-012367
Grating	NONE	NONE
Data mode	FAINT	FAINT
Observation mode	SECONDARY	SECONDARY
[deg] Pointing RA	0	286.9923947202253
[deg] Pointing Dec	0	-37.9718981092695
[deg] Pointing Roll	0.0	69.15210197890869
[mm] SIM focus pos	-0.782348	-0.6828225247311905
[mm] SIM defocus	0	0.8505141146731063
[mm] SIM translation stage pos	-233.592463	250.4635187648994
[mm] SIM translation stage offset	0	-0.007540371344731511
[s] Observation start time (MET)	297682514.456411	297682513.4314
Observation start date	2007-06-08T09:35:14	2007-06-08T09:35:13
[s] Observation end time (MET)	297694709.906994	297694708.88199
Observation end date	2007-06-08T12:58:30	2007-06-08T12:58:28
Read mode	TIMED	TIMED

Parameter	Planned	Actual
Obspar format version number	7	7
Obspar file type	PREDICTED	ACTUAL
Obspar update status	NONE	UPDATED
On-chip summing requested	N	N
Subarray requested	NONE	NONE
Alternating exposures requested	N	N
[s] Primary exposure time	3.2	3.2

## **2.3 Star Slots**

## **2.4 FID Slots**

## **A Summary**

### **A.1 Status**

V&V Scientist	Jen Lauer
V&V Date (YYYY-MM-DD)	2012.04.26
V&V Edition	1
V&V Disposition and Status	OK
V&V Charge Time	2.7964701176286

### **A.2 Comments**