

# V&V Reference Report

## L2 ASCDS Version : 7.6.7.1

Observation 5797 - L2 Version 002  
Chandra X-Ray Center

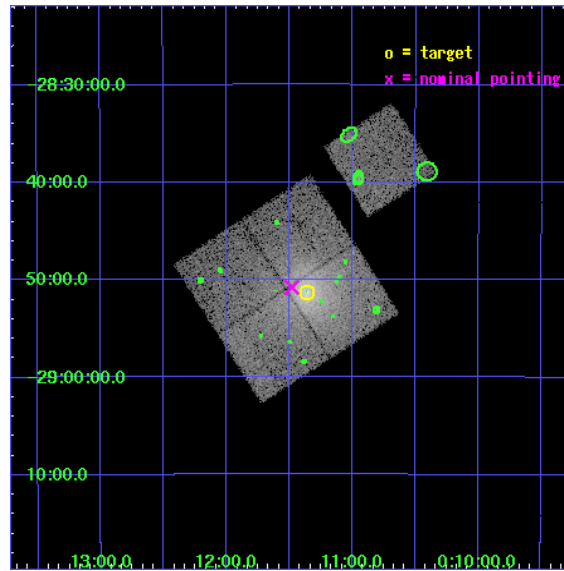
L2 Processing Date : Mar 20 2006

## Contents

<b>1</b>	<b>Front</b>	<b>2</b>
<b>2</b>	<b>OBI</b>	<b>3</b>
2.1	OBI . . . . .	3
2.1.1	Images . . . . .	3
2.1.2	Bias . . . . .	3
2.1.3	Parameters . . . . .	4
2.1.4	Events . . . . .	4
2.2	Compared Parameters . . . . .	5
2.3	Aspect . . . . .	6
2.4	Star Slots . . . . .	9
2.4.1	Slot 3 . . . . .	9
2.4.2	Slot 4 . . . . .	10
2.4.3	Slot 5 . . . . .	11
2.4.4	Slot 6 . . . . .	12
2.4.5	Slot 7 . . . . .	13
2.5	FID Slots . . . . .	14
2.5.1	Slot 0 . . . . .	14
2.5.2	Slot 1 . . . . .	15
2.5.3	Slot 2 . . . . .	16
<b>3</b>	<b>Point Sources</b>	<b>17</b>
<b>A</b>	<b>Summary</b>	<b>18</b>
A.1	Status . . . . .	18
A.2	Comments . . . . .	18

# 1 Front

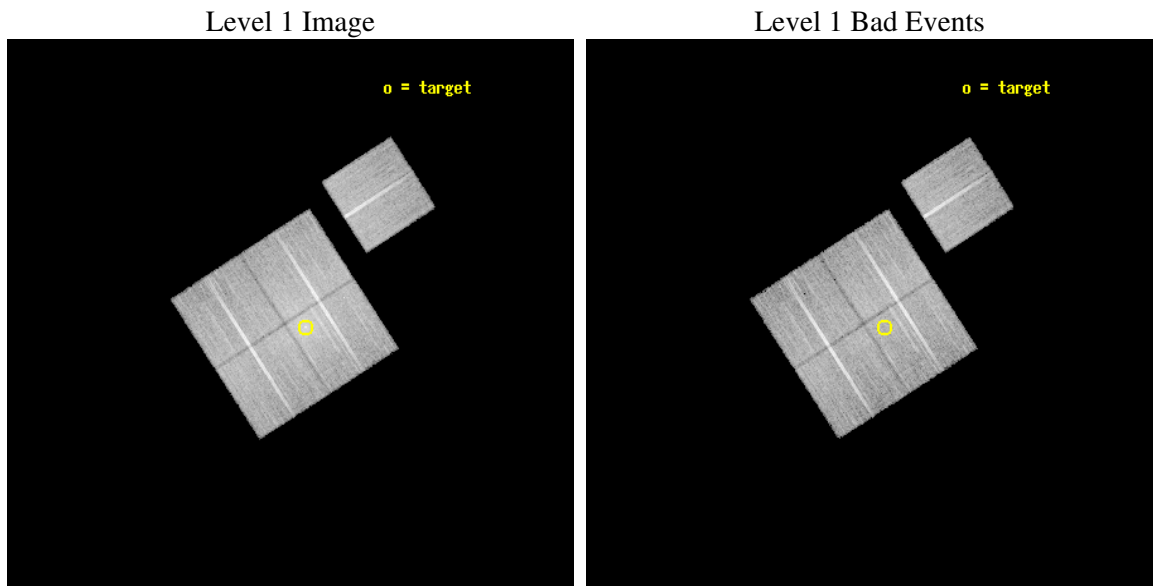
seq_num	800510
obs_id	5797
title	X-ray Properties of a Mass-Selected Group Catalog
observer	Dr Pasquale Mazzotta
object	2PIGGz0.061 J0011.5-2850
dtcycle	0
cycle	P
ra_targ	2.839583
dec_targ	-28.854194
ra_nom	2.8702900517688
dec_nom	-28.846702854121
roll_nom	57.186204344827
revision	2
ontime	20131.358961105
livetime	19868.327935788
ontime0	20131.35897103
ontime1	20134.499961287
ontime2	20134.499961287
ontime3	20131.358961105
ontime6	20134.499961287
l2events	87507



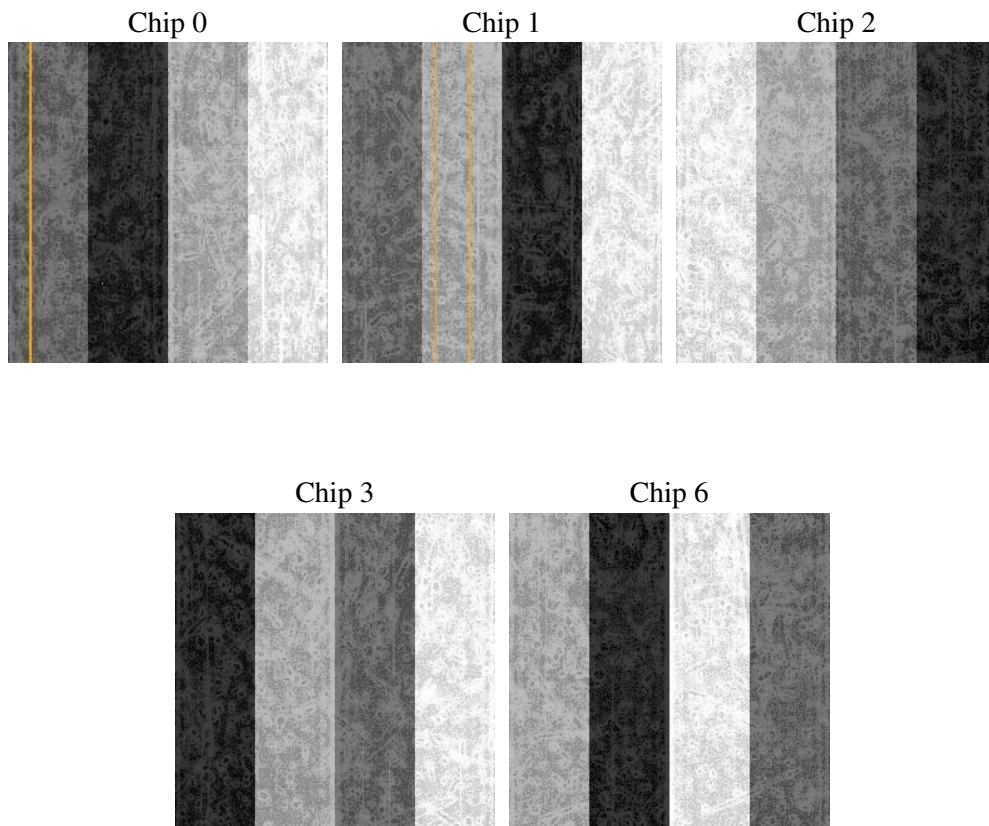
## 2 OBI

### 2.1 OBI

#### 2.1.1 Images



#### 2.1.2 Bias



### 2.1.3 Parameters

obi_num	1
ascdsver	7.6.7.1
caldbver	3.2.1
date	2006-03-20T17:43:11
revision	2

sched_exp_time	20000.000000
ontime	20432.262487799
ontime0	20432.262517631
ontime1	20435.403507888
ontime2	20435.40348798
ontime3	20432.262487799
ontime6	20435.40348798
l1events	660113

### 2.1.4 Events

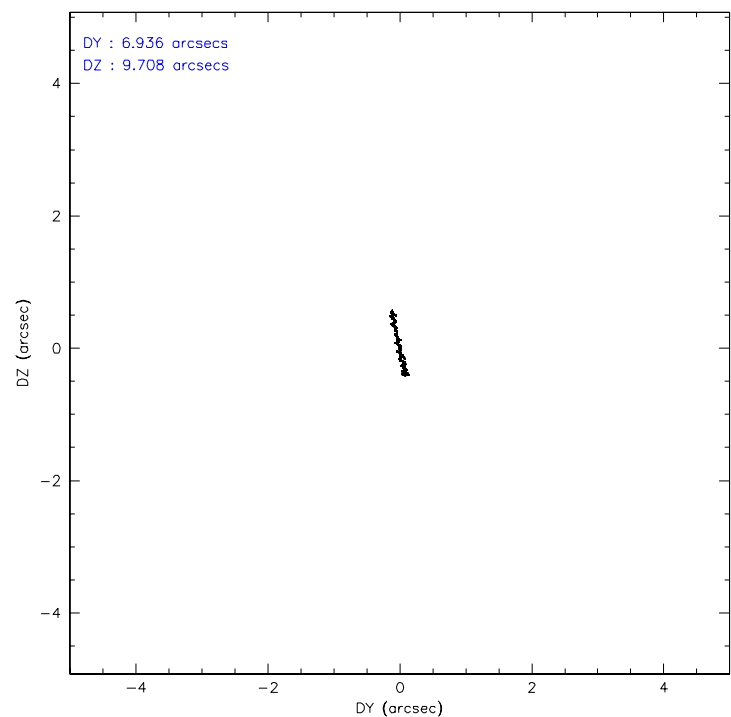
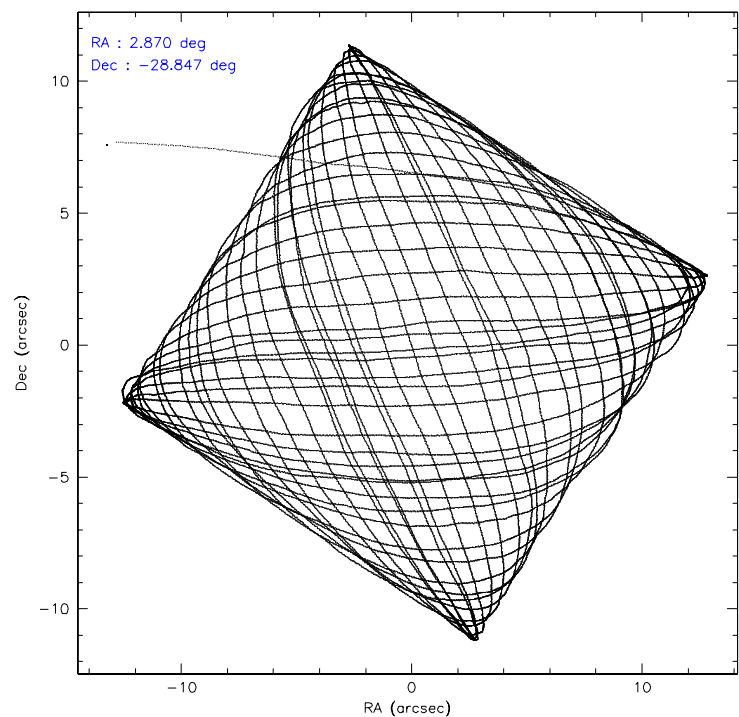
	ccd 0	ccd 1	ccd 2	ccd 3	ccd 6
level 1 events	121847	127356	138809	147895	124206
rejected events	106831	107113	120763	114484	111106
rejected %	87%	84%	86%	77%	89%

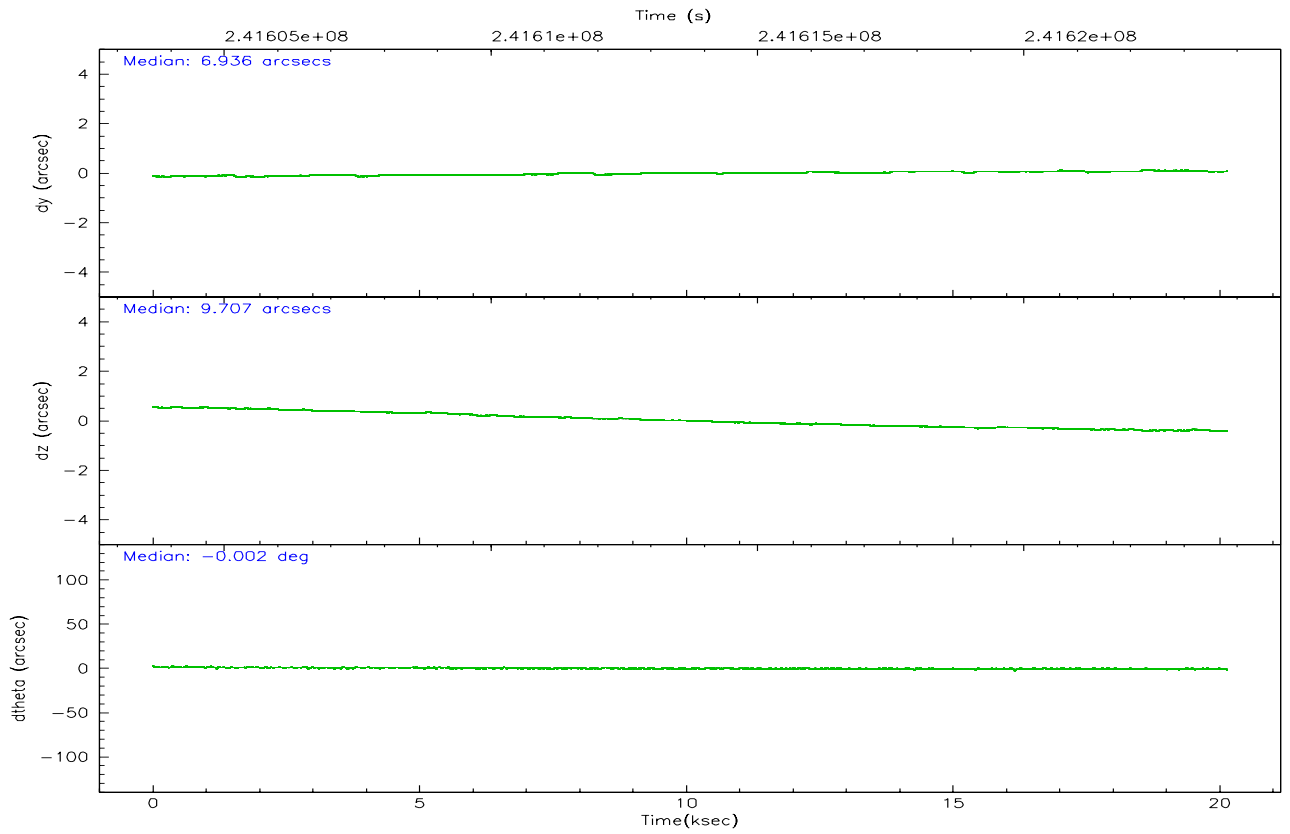
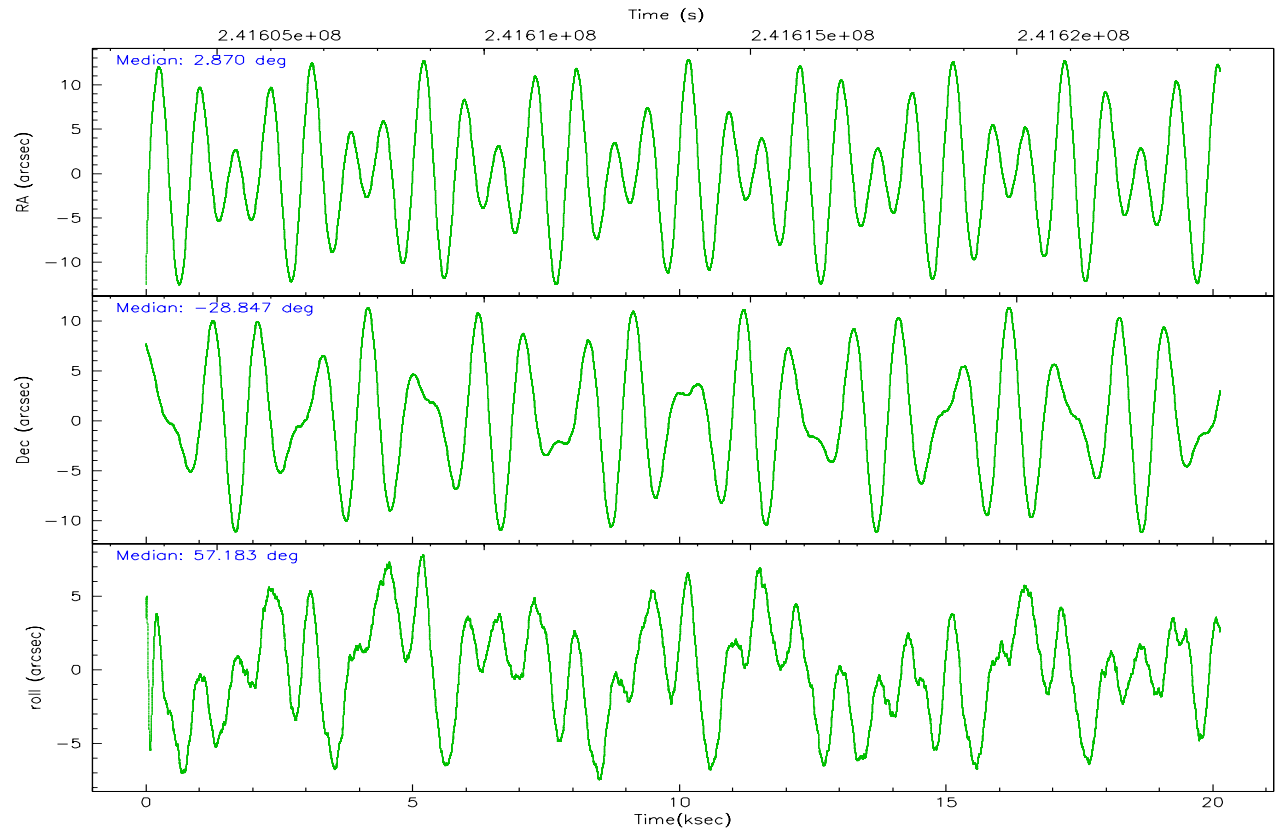
	ccd 0	ccd 1	ccd 2	ccd 3	ccd 6
grade 0 events	6475	10145	9304	22243	4805
	5%	7%	6%	15%	3%
grade 1 events	63	83	87	171	62
	0%	0%	0%	0%	0%
grade 2 events	3288	3855	3497	4649	2896
	2%	3%	2%	3%	2%
grade 3 events	1542	1767	1572	2006	1443
	1%	1%	1%	1%	1%
grade 4 events	1494	1831	1560	1972	1407
	1%	1%	1%	1%	1%
grade 5 events	4370	5026	4264	5139	5003
	3%	3%	3%	3%	4%
grade 6 events	2443	2971	2348	2933	2763
	2%	2%	1%	1%	2%
grade 7 events	102172	101678	116177	108782	105827
	83%	79%	83%	73%	85%

## 2.2 Compared Parameters

Parameter	Planned	Actual	Parameter	Planned	Actual
Instrument	ACIS	ACIS	Obspar format version number	6	6
Detector	ACIS-01236	ACIS-01236	Obspar file type	PREDICTED	ACTUAL
Grating	NONE	NONE	Obspar update status	NONE	UPDATED
Data mode	VFAINT	VFAINT	On-chip summing requested	N	N
Observation mode	POINTING	POINTING	Subarray requested	NONE	NONE
Pointing RA	2.868874	2.870290051768773	Alternating exposures requested	N	N
Pointing Dec	-28.874055	-28.84670285412128	Primary exposure time	0.000000	3.1
Pointing Roll	56.976816	57.18620434482651			
SIM focus pos (mm)	-0.782348	-0.7809083437167272			
SIM defocus (mm)	0	0.001439871863259334			
SIM translation stage pos (mm)	-233.592463	-233.5874344608287			
SIM translation stage offset (mm)	0	-0.005018542100998502			
Observation start time	241603806.184000	241602632.39029			
Observation start date	2005-08-28T08:09:02	2005-08-28T07:50:32			
Observation end time	241623806.184000	241624511.01629			
Observation end date	2005-08-28T13:42:22	2005-08-28T13:55:11			
Read mode	TIMED	TIMED			

2.3 Aspect





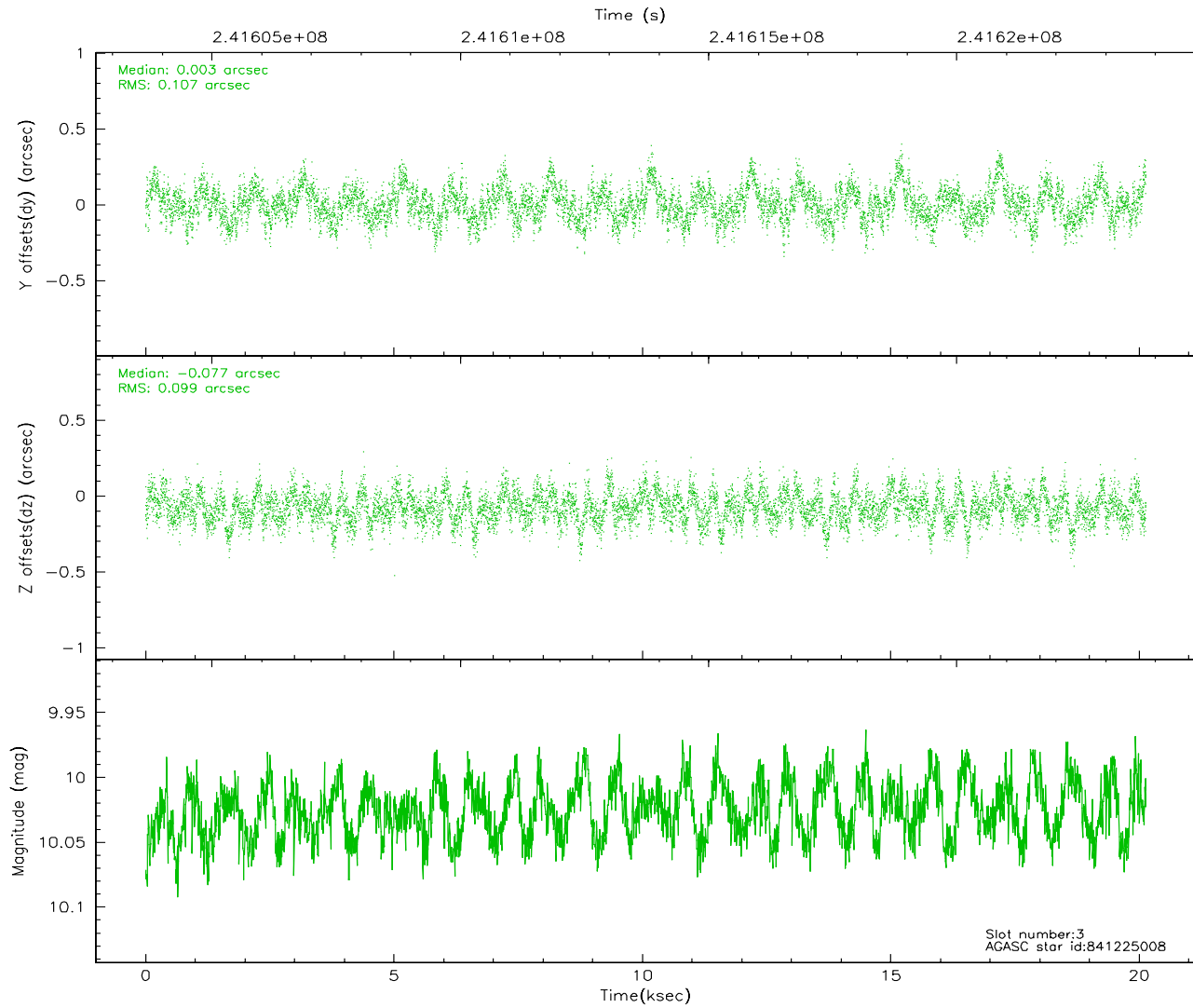
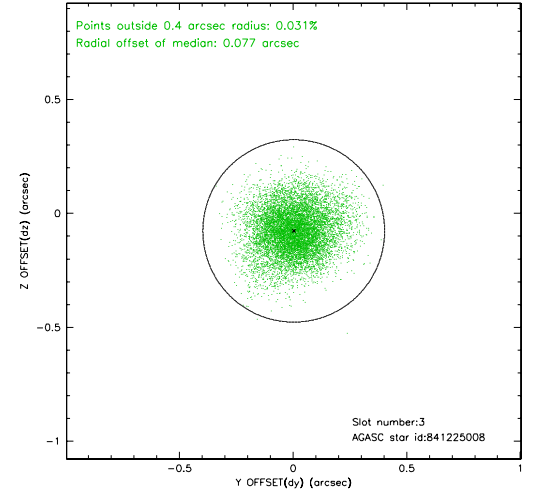
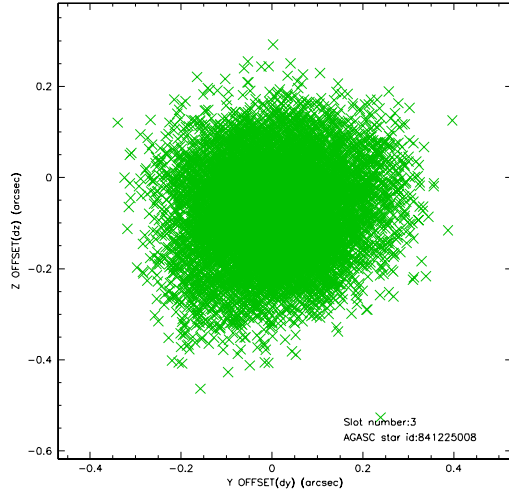
### Slot Statistics

slot	status	id	mag	n_pts	med_dy	med_dz	dr1	dr2	ra	dec	mean_y	mean_z
0	FID	ACIS-I-1	7.24	4912	-0.016	0.045	0.011	0.019	0.000000	0.000000	932.74	-833.16
1	FID	ACIS-I-5	7.23	4913	-0.127	0.018	0.007	0.011	0.000000	0.000000	-1815.37	1064.21
2	FID	ACIS-I-6	7.25	4912	0.053	0.009	0.011	0.019	0.000000	0.000000	398.15	1708.92
3	GUIDE	841225008	10.03	9810	0.003	-0.077	0.156	0.255	2.528125	-28.337799	1029.12	1956.47
4	GUIDE	841356256	9.73	9810	0.004	0.121	0.118	0.205	3.240103	-29.468590	-1161.80	-2142.74
5	GUIDE	841356288	9.35	9813	0.096	-0.024	0.099	0.159	3.165981	-29.341928	-904.78	-1700.69
6	GUIDE	841222768	9.92	9787	0.009	-0.042	0.134	0.221	2.568633	-28.107150	1794.50	2303.15
7	GUIDE	841352216	10.32	9810	-0.111	0.029	0.213	0.329	3.050711	-28.183391	2399.27	871.32

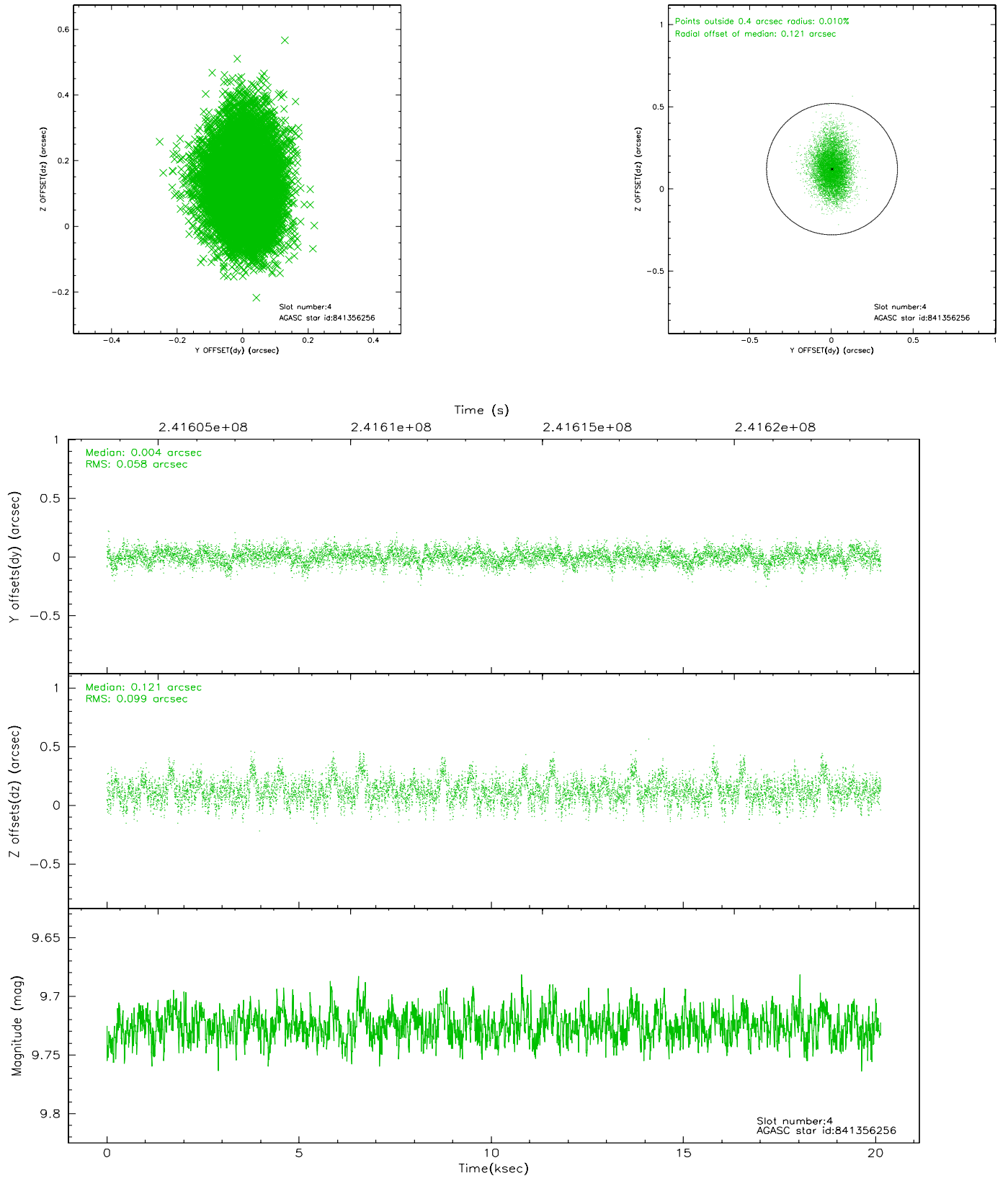


## 2.4 Star Slots

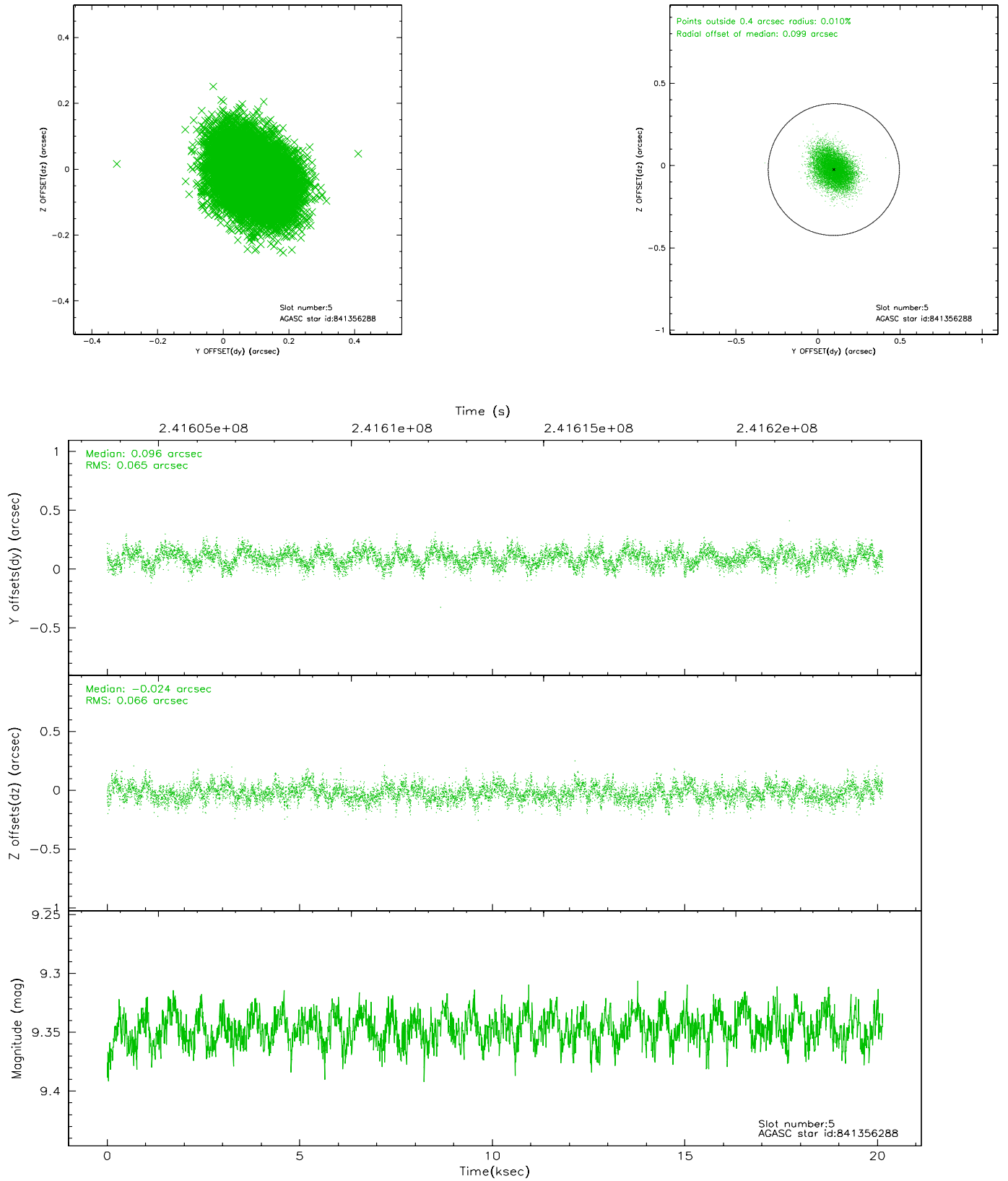
### 2.4.1 Slot 3



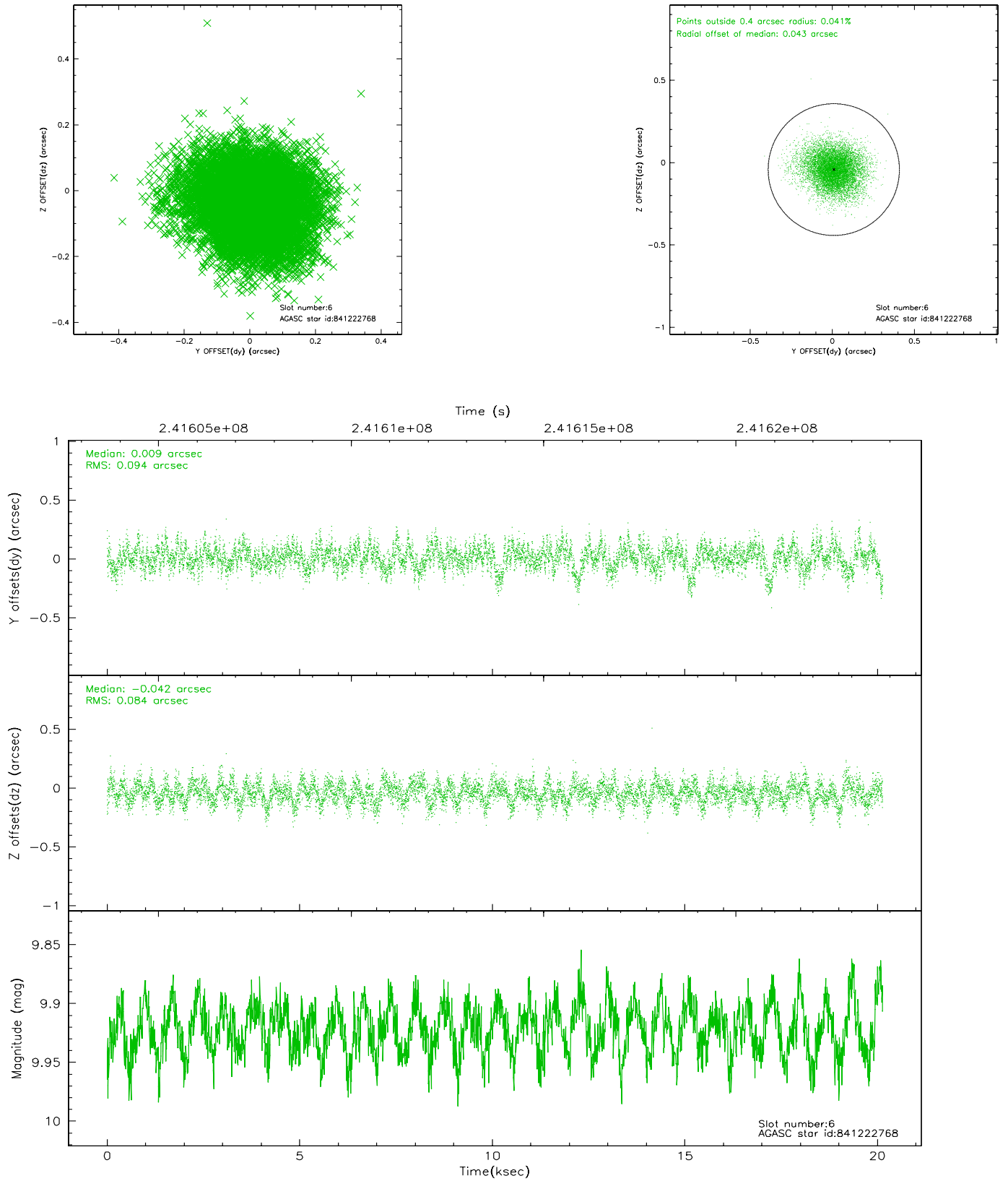
## 2.4.2 Slot 4



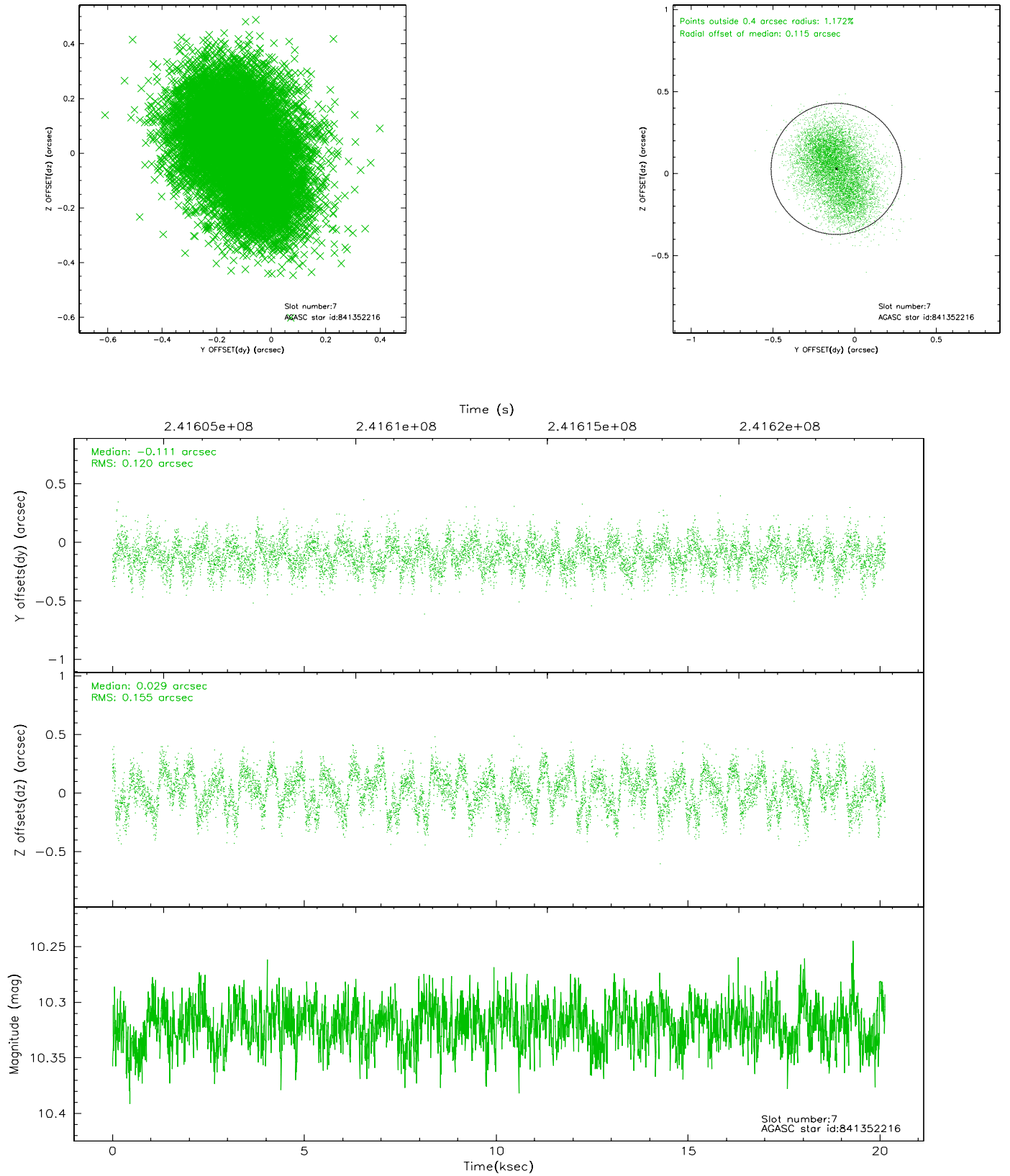
### 2.4.3 Slot 5



## 2.4.4 Slot 6

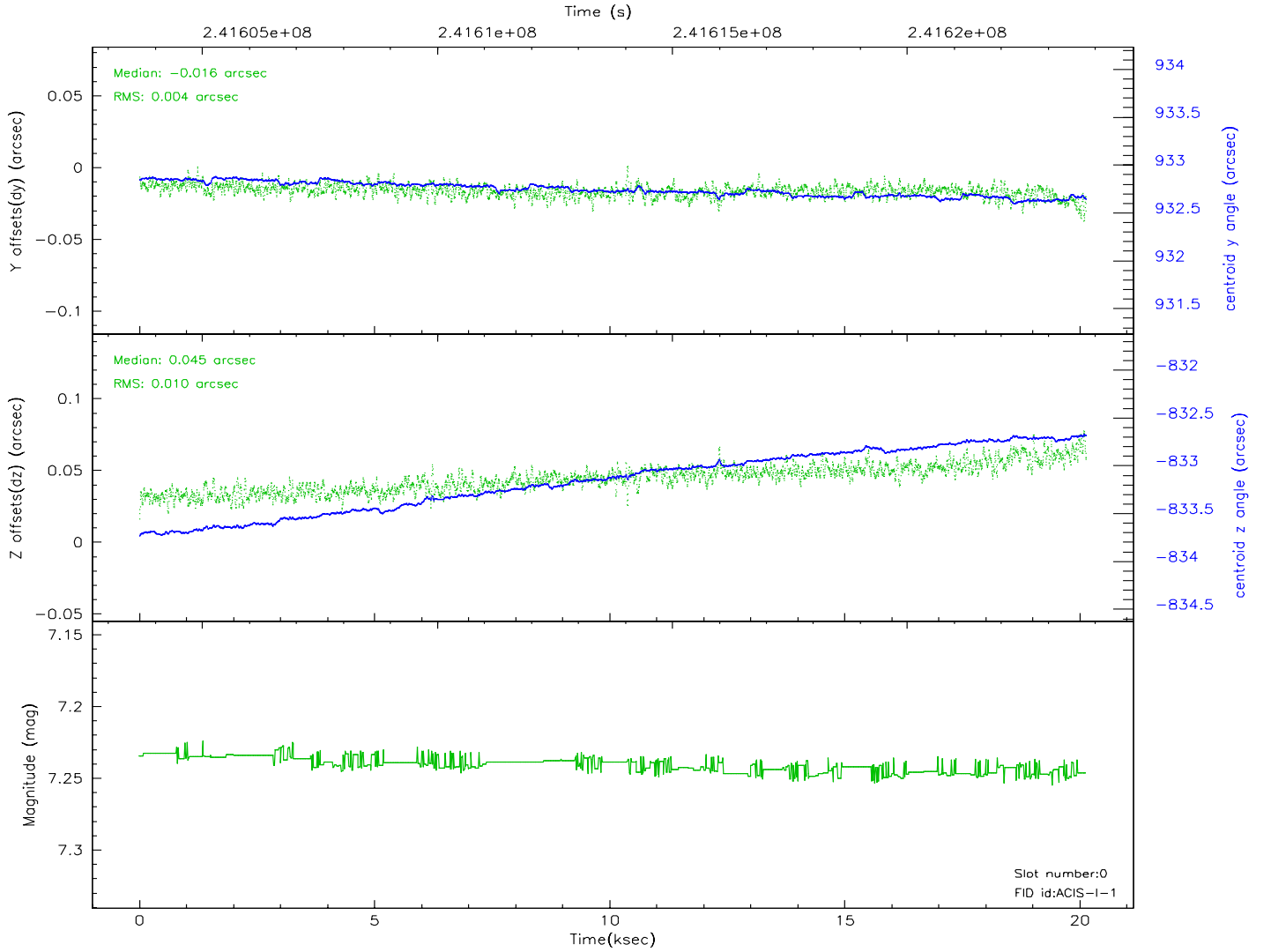
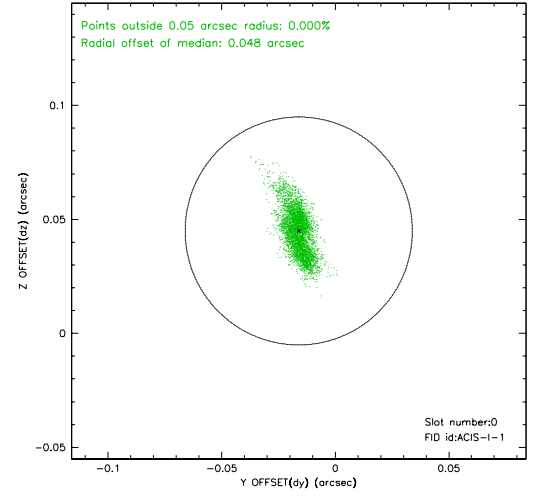
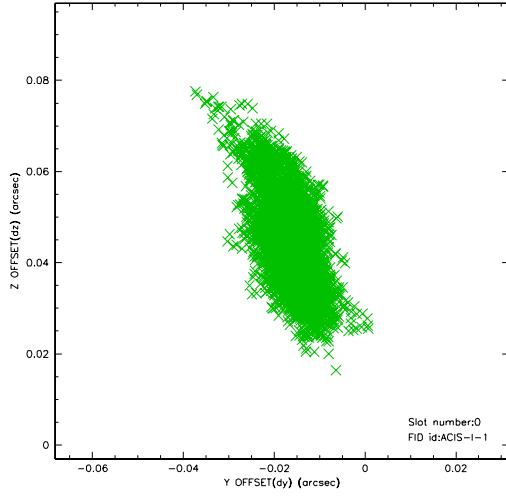


## 2.4.5 Slot 7

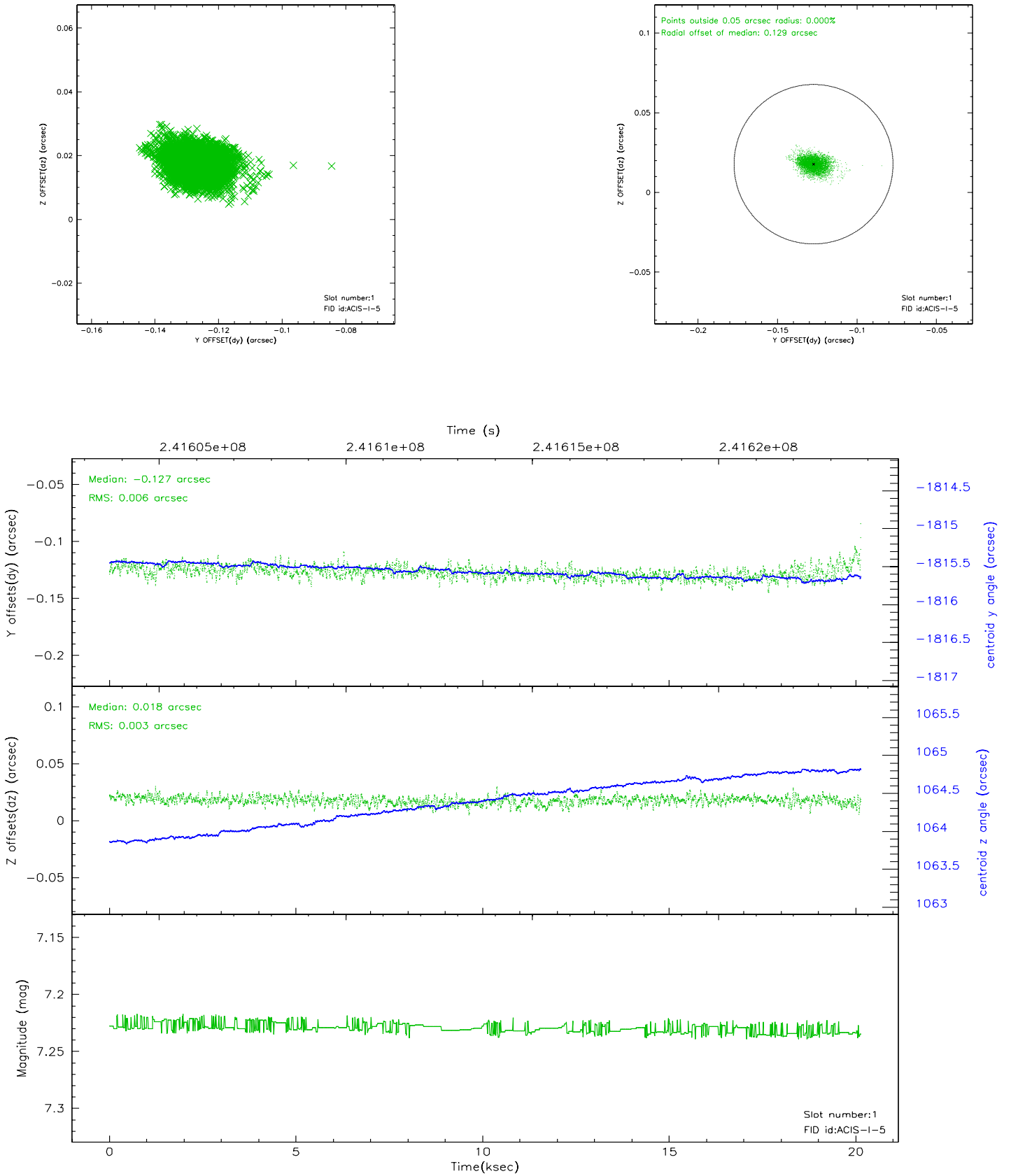


## 2.5 FID Slots

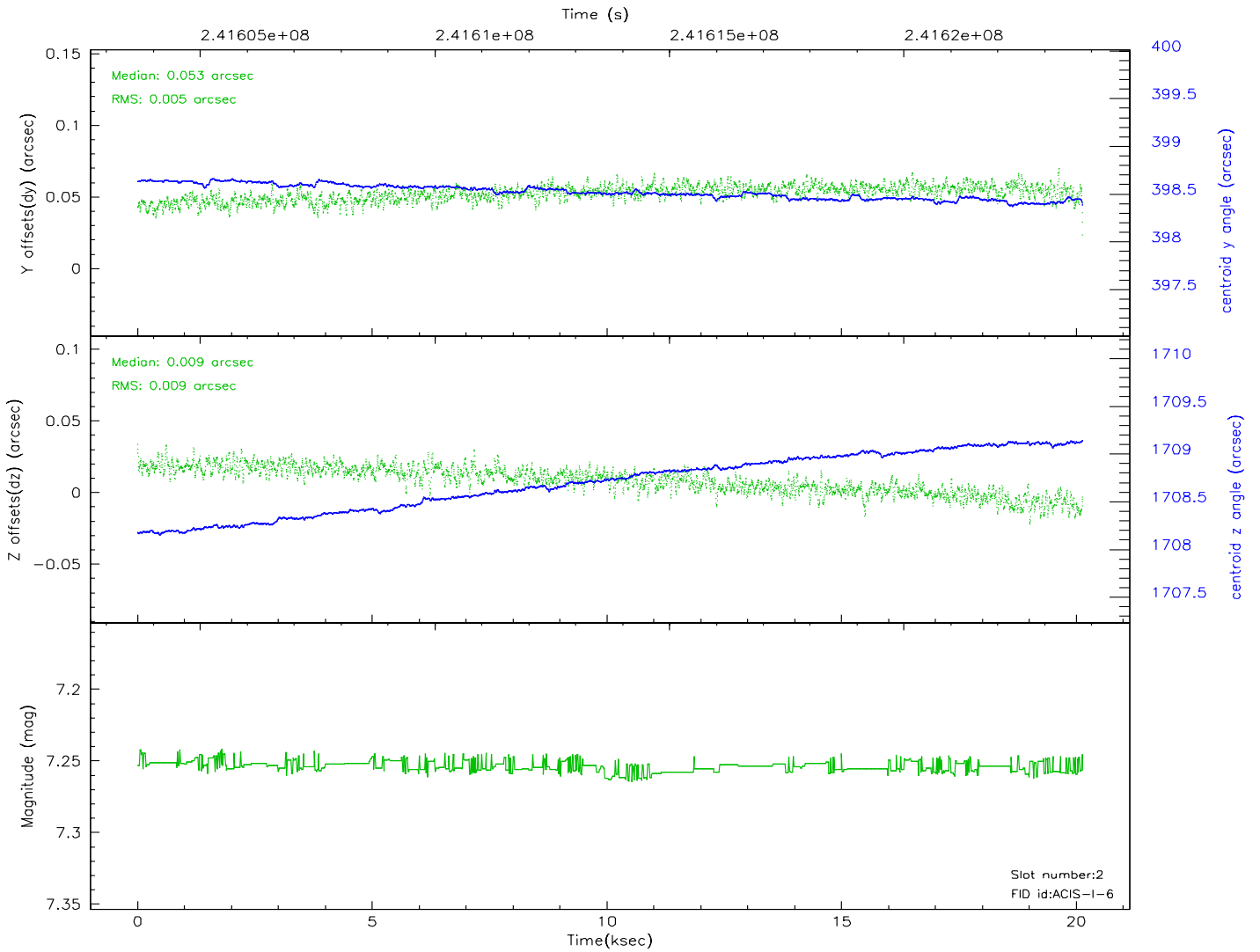
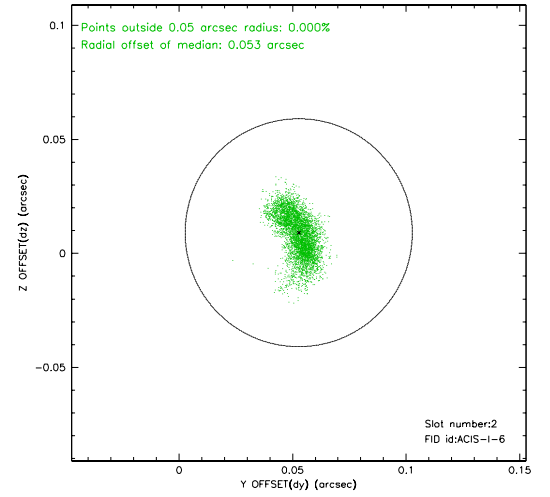
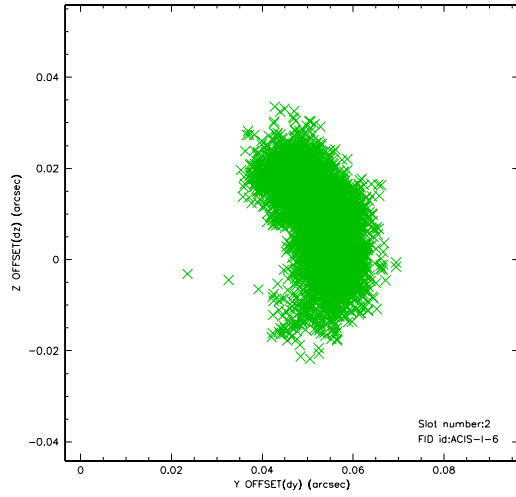
### 2.5.1 Slot 0



## 2.5.2 Slot 1

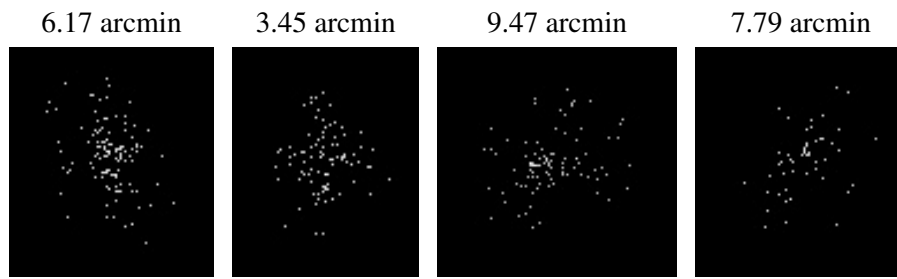


### 2.5.3 Slot 2





### 3 Point Sources



## A Summary

### A.1 Status

V&V Scientist	Doug Morgan
V&V Date (YYYY-MM-DD)	2006.03.20
V&V Edition	1
V&V Disposition and Status	OK
V&V Charge Time	20.13135

### A.2 Comments