

# V&V Reference Report

## L2 ASCDS Version : 8.4.4

Observation 57957 - L2 Version 3  
Chandra X-Ray Center

L2 Processing Date : May 9 2012

## Contents

<b>1</b>	<b>Front</b>	<b>2</b>
<b>2</b>	<b>OBI</b>	<b>3</b>
2.1	OBI . . . . .	3
2.1.1	Images . . . . .	3
2.1.2	Bias . . . . .	3
2.1.3	Parameters . . . . .	4
2.1.4	Events . . . . .	4
2.2	Compared Parameters . . . . .	5
2.3	Star Slots . . . . .	6
2.4	FID Slots . . . . .	6
<b>A</b>	<b>Summary</b>	<b>7</b>
A.1	Status . . . . .	7
A.2	Comments . . . . .	7

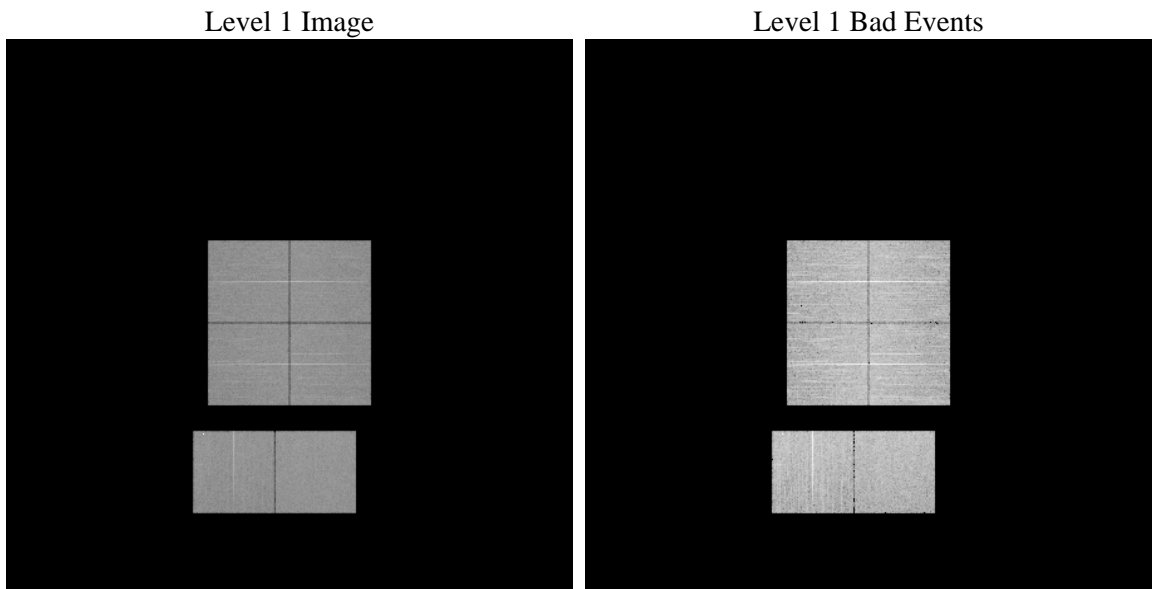
# 1 Front

seq_num	&#160	Sequence number
obs_id	57957	Observation id
title	ACIS-012367 diagnostics	Proposal title
observer	CHANDRA engineering request/realtime commanding	Principal investig
object	&#160	Source name
dtcycle	0	&#160
cycle	P	events from which exps? Prim/Second/Both
ra_targ	0.0	Observer's specified target RA [deg]
dec_targ	0.0	Observer's specified target Dec [deg]
ra_nom	178.47462093285	Nominal RA [deg]
dec_nom	10.947016757709	Nominal Dec [deg]
roll_nom	88.651142194917	Nominal Roll [deg]
revision	3	Processing version of data
ontime	6053.5948656797	Sum of GTIs [s]
livetime	5976.9406024533	Livetime [s]
ontime0	6053.5538256764	Sum of GTIs [s]
ontime1	6053.5127856731	Sum of GTIs [s]
ontime2	6053.4717456698	Sum of GTIs [s]
ontime3	6053.635905683	Sum of GTIs [s]
ontime6	6053.4307056665	Sum of GTIs [s]
ontime7	6053.5948656797	Sum of GTIs [s]
l2events	558398	Number of level 2 events

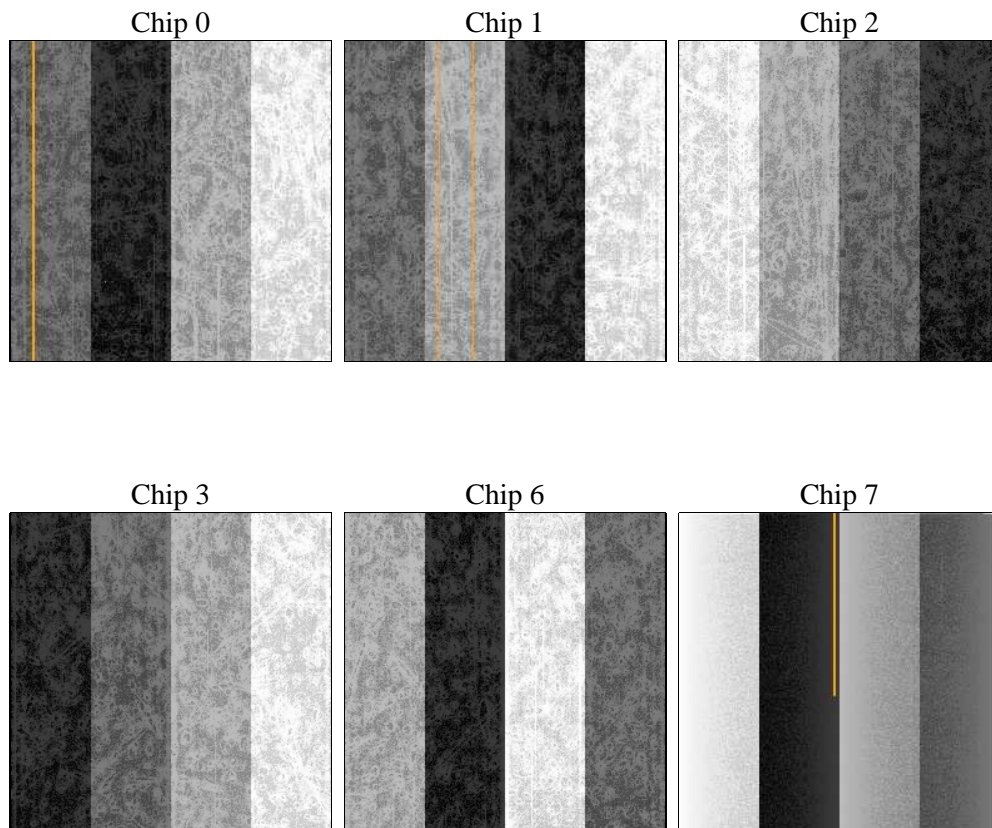
## 2 OBI

### 2.1 OBI

#### 2.1.1 Images



#### 2.1.2 Bias



### 2.1.3 Parameters

obi_num	1	Obi number	sched_exp_time	4920	[s] Scheduled observation exposure time
ascdsver	8.4.4	Processing system revision	ontime	6053.5948656797	Sum of GTIs [s]
caldsver	4.4.9	&#160	ontime0	6053.5538256764	Sum of GTIs [s]
date	2012-05-09T21:57:43	Date and time of file creation	ontime1	6053.5127856731	Sum of GTIs [s]
revision	3	Processing version of data	ontime2	6053.4717456698	Sum of GTIs [s]
			ontime3	6053.635905683	Sum of GTIs [s]
			ontime6	6053.4307056665	Sum of GTIs [s]
			ontime7	6053.5948656797	Sum of GTIs [s]
			l1events	963924	Number of level 1 events

### 2.1.4 Events

	ccd 0	ccd 1	ccd 2	ccd 3	ccd 6	ccd 7		ccd 0	ccd 1	ccd 2	ccd 3	ccd 6	ccd 7
level 1 events	153618	156634	156453	160234	163639	173346	grade 0 events	52232	50568	52457	53964	53448	25969
rejected events	59930	61793	64140	65378	65093	57019		34%	32%	33%	33%	32%	14%
rejected %	39%	39%	40%	40%	39%	32%	grade 1 events	394	315	414	383	328	132
								0%	0%	0%	0%	0%	0%
							grade 2 events	17362	19317	16247	16739	18387	26826
								11%	12%	10%	10%	11%	15%
							grade 3 events	6219	6187	6346	6470	6280	10991
								4%	3%	4%	4%	3%	6%
							grade 4 events	6243	6157	6294	6555	6049	10738
								4%	3%	4%	4%	3%	6%
							grade 5 events	3100	3242	2886	3372	3363	8265
								2%	2%	1%	2%	2%	4%
							grade 6 events	15958	16981	15203	15492	19040	47334
								10%	10%	9%	9%	11%	27%
							grade 7 events	52110	53867	56606	57259	56744	43091
								33%	34%	36%	35%	34%	24%

## 2.2 Compared Parameters

Parameter	Planned	Actual
Instrument	ACIS	ACIS
Detector	ACIS-012367	ACIS-012367
Grating	NONE	NONE
Data mode	FAINT	FAINT
Observation mode	SECONDARY	SECONDARY
[deg] Pointing RA	178.4746210518284	178.4746209328469
[deg] Pointing Dec	10.94701668345439	10.94701675770917
[deg] Pointing Roll	88.65114189418551	88.65114219491683
[mm] SIM focus pos	-0.68282252473119	-0.68282252473119
[mm] SIM defocus	0.8505140384245534	0.8505140384245534
[mm] SIM translation stage pos	250.4660330802	250.4660330802
[mm] SIM translation stage offset	-0.01005726120527584	-0.01005726120527584
[s] Observation start time (MET)	319841424.724322	319841424.724322
Observation start date	2008-02-19T21:04:00	2008-02-19T20:50:24
[s] Observation end time (MET)	319849484.926294	319849484.926294
Observation end date	2008-02-19T22:26:00	2008-02-19T23:04:44
Read mode	TIMED	TIMED

Parameter	Planned	Actual
Obspar format version number	7	7
Obspar file type	PREDICTED	ACTUAL
Obspar update status	OVERRIDE	OVERRIDE
Number of optional ACIS chips dropped	0	0
On-chip summing requested	N	N
Subarray requested	NONE	NONE
Alternating exposures requested	N	N
[s] Primary exposure time	3.2	3.2

## **2.3 Star Slots**

## **2.4 FID Slots**

## A Summary

### A.1 Status

V&V Scientist	Beth Sundheim
V&V Date (YYYY-MM-DD)	2012.05.14
V&V Edition	1
V&V Disposition and Status	OK
V&V Charge Time	6.0535948656797

### A.2 Comments