

V&V Reference Report

L2 ASCDS Version : 7.6.7.1

Observation 5777 - L2 Version 002
Chandra X-Ray Center

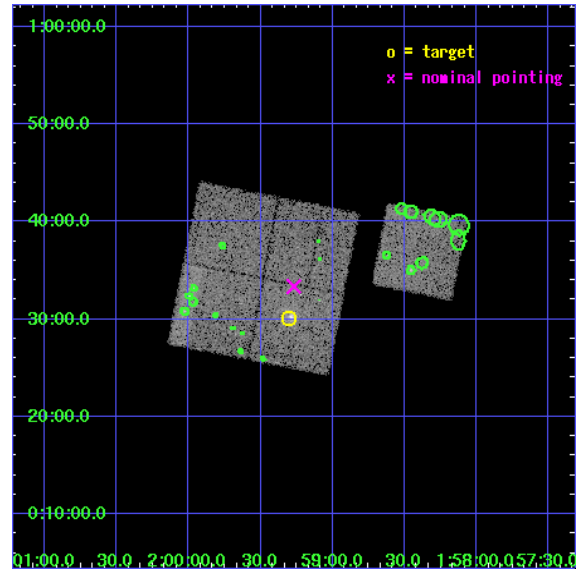
L2 Processing Date : Mar 23 2006

Contents

1	Front	2
2	OBI	3
2.1	OBI	3
2.1.1	Images	3
2.1.2	Bias	3
2.1.3	Parameters	4
2.1.4	Events	4
2.2	Compared Parameters	5
2.3	Aspect	6
2.4	Star Slots	9
2.4.1	Slot 3	9
2.4.2	Slot 4	10
2.4.3	Slot 5	11
2.4.4	Slot 6	12
2.4.5	Slot 7	13
2.5	FID Slots	14
2.5.1	Slot 0	14
2.5.2	Slot 1	15
2.5.3	Slot 2	16
3	Point Sources	17
A	Summary	18
A.1	Status	18
A.2	Comments	18

1 Front

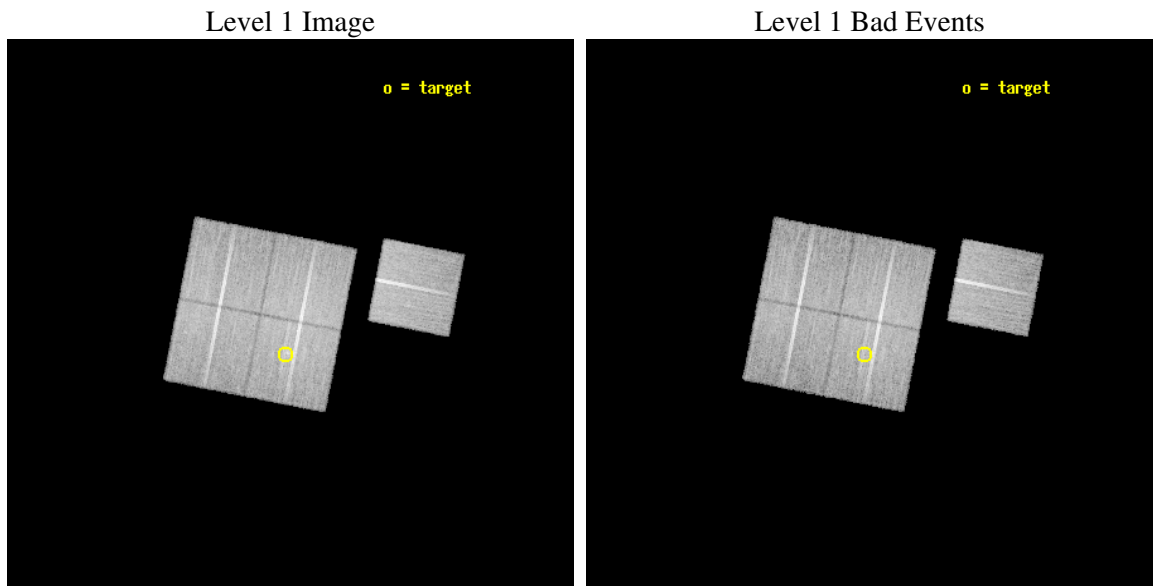
seq_num	800490
obs_id	5777
title	Chandra observations of high-redshift clusters of galaxies from the 400 Square Degrees ROSAT PSPC survey
observer	Dr. Stephen Murray
object	cl0159+0030
dtcycle	0
cycle	P
ra_targ	29.825833
dec_targ	0.5025
ra_nom	29.81730529088
dec_nom	0.55611741676817
roll_nom	101.10992693299
revision	2
ontime	20143.799961269
livetime	19880.606385125
ontime0	20140.658980966
ontime1	20140.658981025
ontime2	20140.658971012
ontime3	20143.799961269
ontime6	20140.658961087
l2events	61584



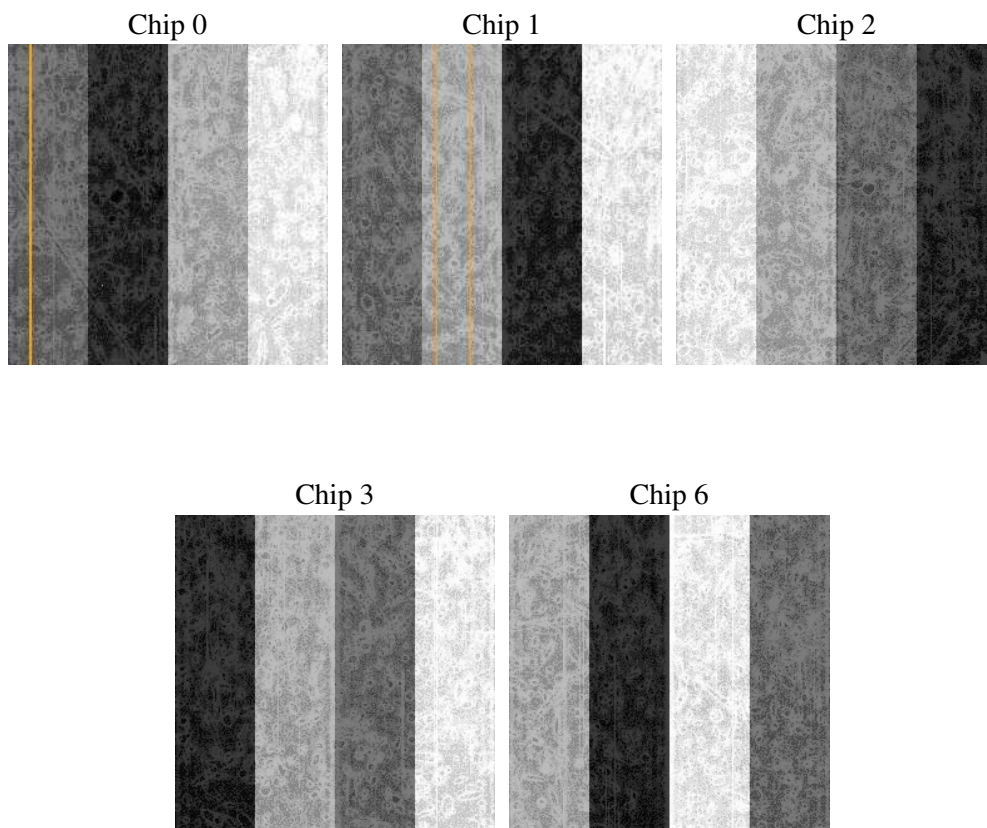
2 OBI

2.1 OBI

2.1.1 Images



2.1.2 Bias



2.1.3 Parameters

obi_num	0
ascdsver	7.6.7.1
caldsver	3.2.1
date	2006-03-23T18:57:23
revision	2

sched_exp_time	20000.000000
ontime	20573.627435148
ontime0	20570.486454844
ontime1	20570.486454904
ontime2	20570.48644489
ontime3	20573.627435148
ontime6	20570.486434966
l1events	688776

2.1.4 Events

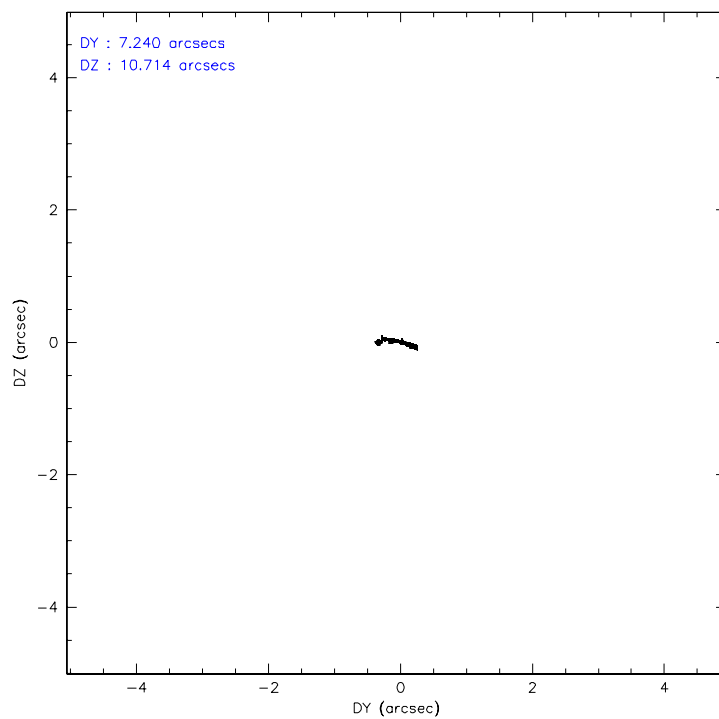
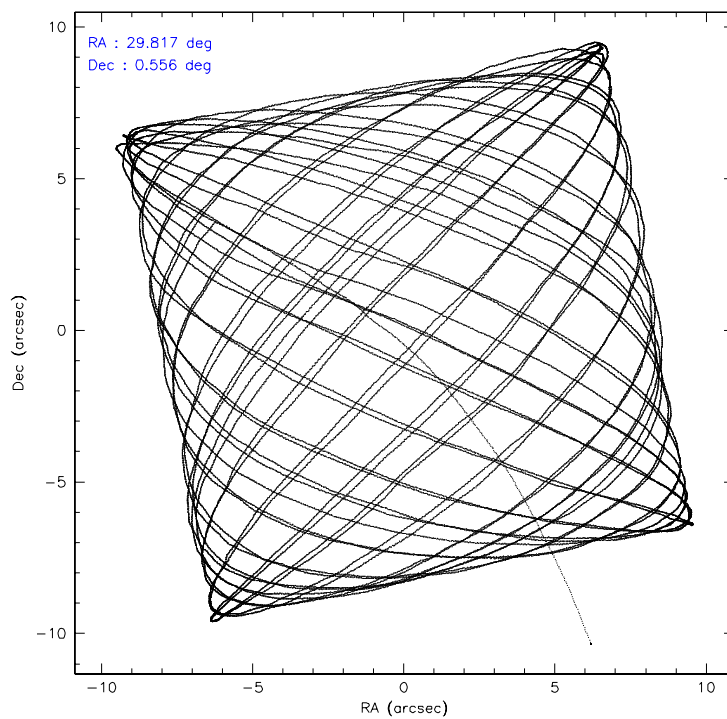
	ccd 0	ccd 1	ccd 2	ccd 3	ccd 6
level 1 events	131276	129641	145564	140620	141675
rejected events	117115	113010	131270	126050	126830
rejected %	89%	87%	90%	89%	89%

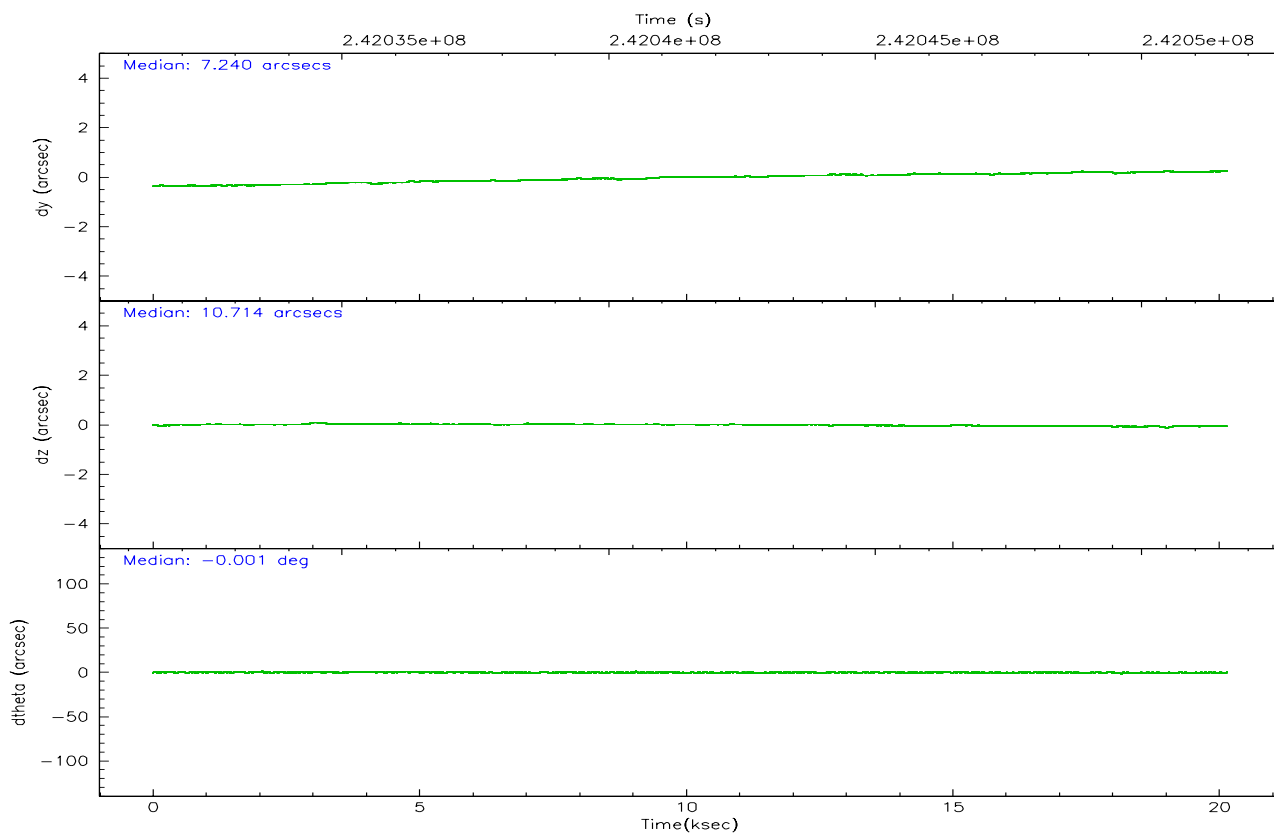
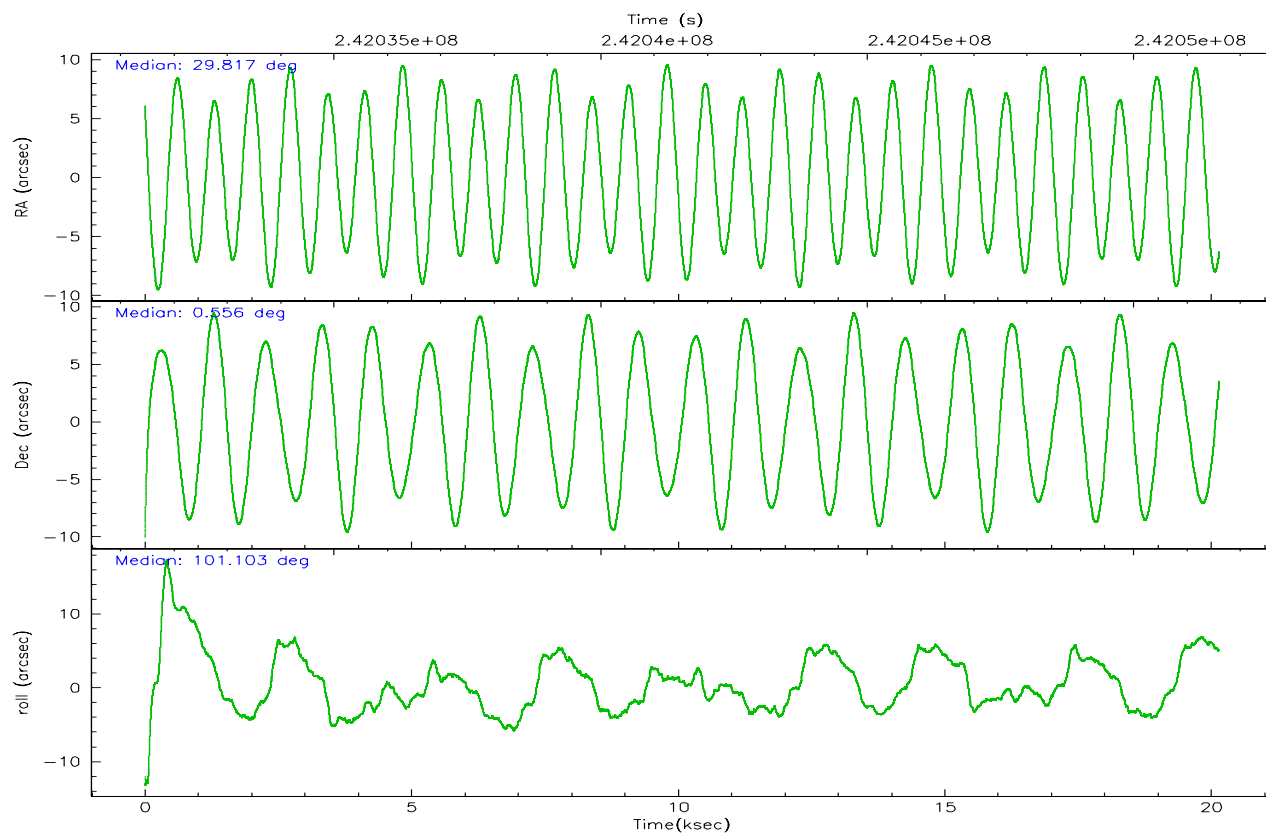
	ccd 0	ccd 1	ccd 2	ccd 3	ccd 6
grade 0 events	5534	6613	5848	6367	6029
	4%	5%	4%	4%	4%
grade 1 events	70	61	78	72	68
	0%	0%	0%	0%	0%
grade 2 events	3230	3673	3222	2927	3086
	2%	2%	2%	2%	2%
grade 3 events	1618	1715	1459	1423	1591
	1%	1%	1%	1%	1%
grade 4 events	1453	1716	1621	1510	1506
	1%	1%	1%	1%	1%
grade 5 events	4470	5039	4272	5407	5034
	3%	3%	2%	3%	3%
grade 6 events	2570	3297	2451	2622	2934
	1%	2%	1%	1%	2%
grade 7 events	112331	107527	126613	120292	121427
	85%	82%	86%	85%	85%

2.2 Compared Parameters

Parameter	Planned	Actual	Parameter	Planned	Actual
Instrument	ACIS	ACIS	Obspar format version number	6	6
Detector	ACIS-01236	ACIS-01236	Obspar file type	PREDICTED	ACTUAL
Grating	NONE	NONE	Obspar update status	NONE	UPDATED
Data mode	VFAINT	VFAINT	On-chip summing requested	N	N
Observation mode	POINTING	POINTING	Subarray requested	NONE	NONE
Pointing RA	29.835425	29.8173052908801	Alternating exposures requested	N	N
Pointing Dec	0.535578	0.5561174167681674	Primary exposure time	0.000000	3.1
Pointing Roll	100.901076	101.1099269329916			
SIM focus pos (mm)	-0.782348	-0.7809083437167272			
SIM defocus (mm)	0	0.001439871863259334			
SIM translation stage pos (mm)	-225.840463	-225.8433433320239			
SIM translation stage offset (mm)	-7.752	-7.749109670905796			
Observation start time	242031602.184000	242030412.05993			
Observation start date	2005-09-02T06:58:58	2005-09-02T06:40:12			
Observation end time	242051602.184000	242052461.86094			
Observation end date	2005-09-02T12:32:18	2005-09-02T12:47:41			
Read mode	TIMED	TIMED			

2.3 Aspect



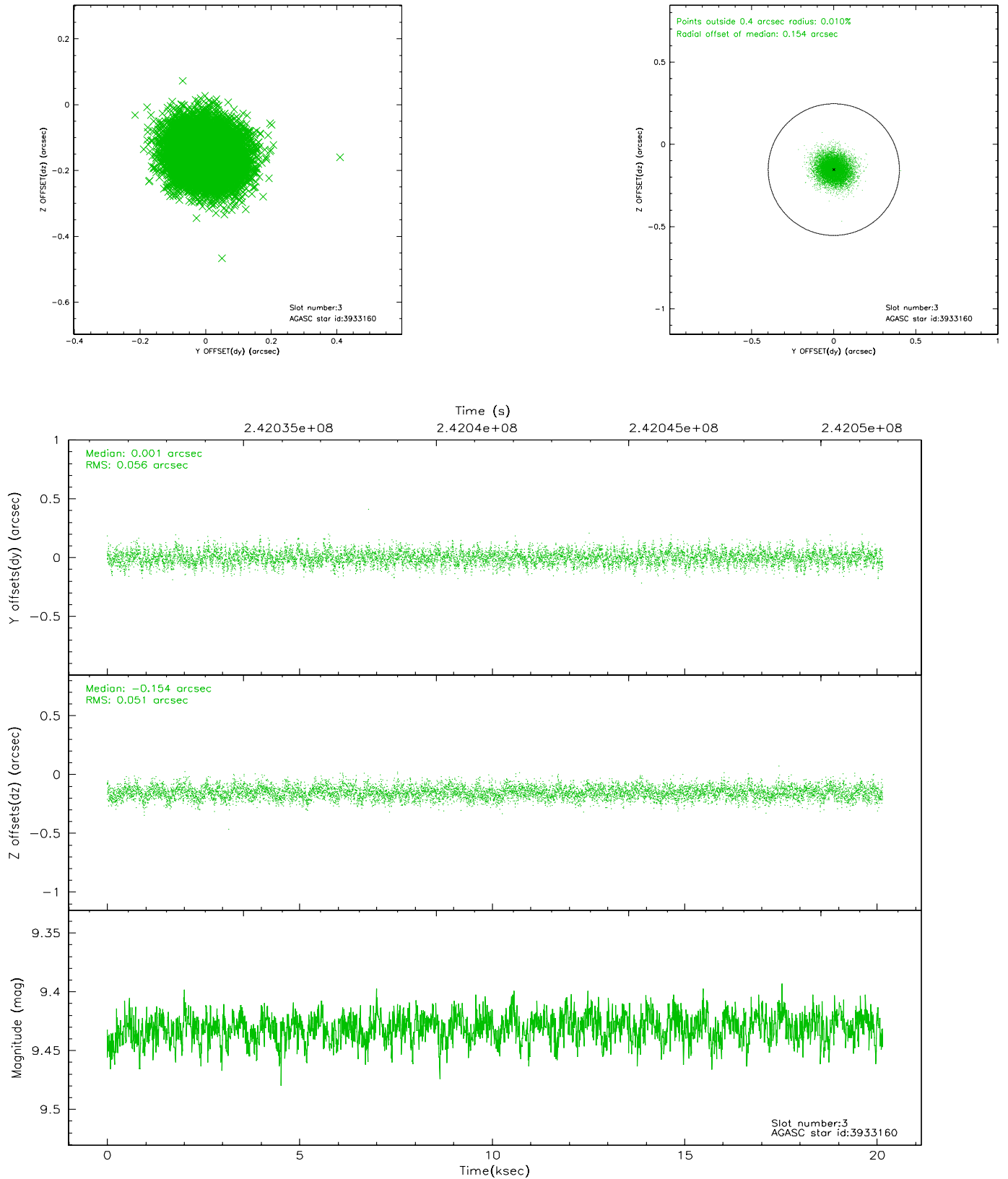


Slot Statistics

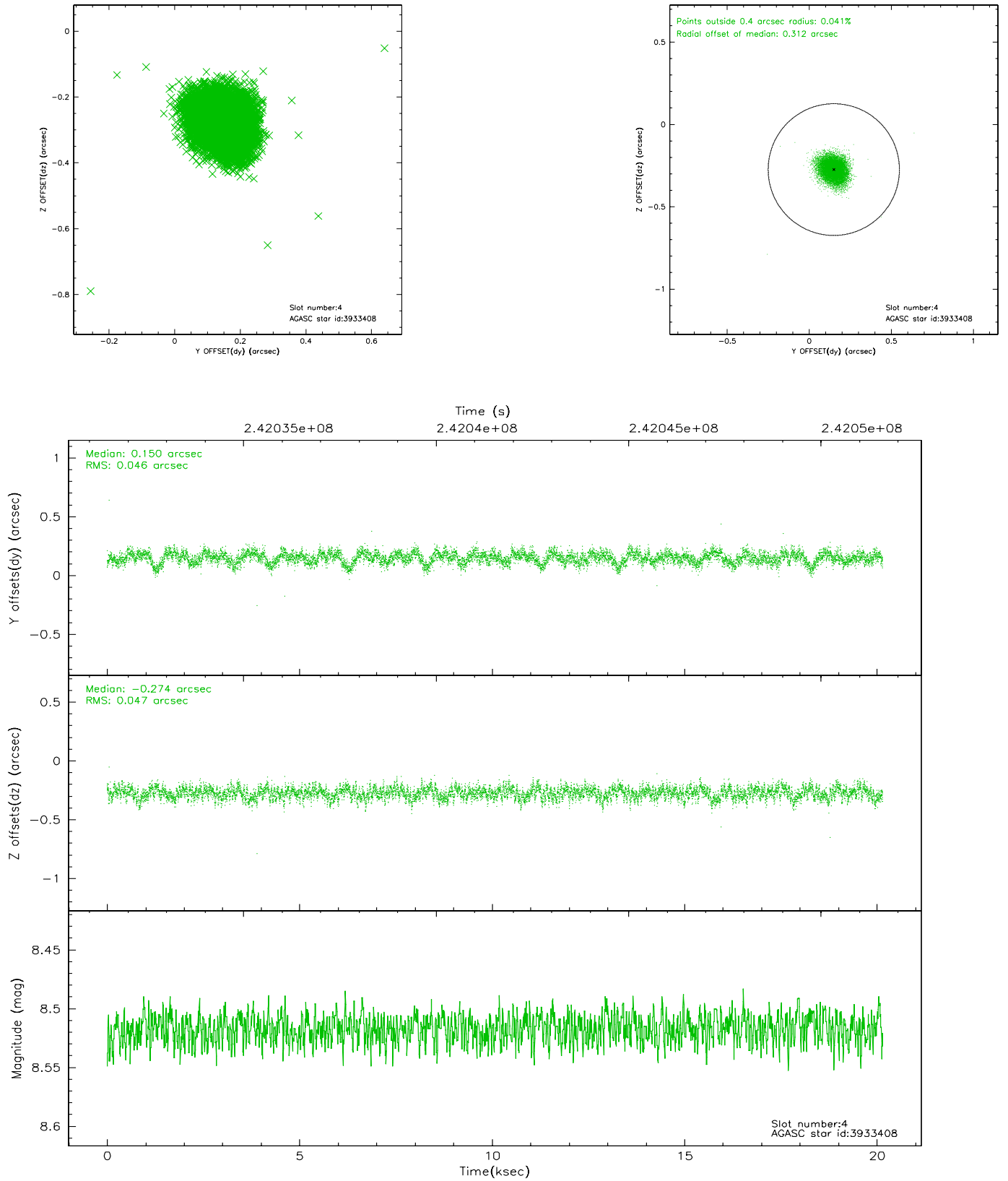
slot	status	id	mag	n_pts	med_dy	med_dz	dr1	dr2	ra	dec	mean_y	mean_z
0	FID	ACIS-I-1	7.24	4914	0.100	-0.093	0.007	0.011	0.000000	0.000000	932.41	-993.38
1	FID	ACIS-I-5	7.22	4915	-0.199	0.097	0.007	0.011	0.000000	0.000000	-1815.87	904.20
2	FID	ACIS-I-6	7.25	4915	0.008	0.067	0.008	0.013	0.000000	0.000000	397.69	1548.87
3	GUIDE	3933160	9.43	9819	0.001	-0.154	0.081	0.132	29.607018	0.758442	943.66	655.68
4	GUIDE	3933408	8.52	9826	0.150	-0.274	0.069	0.112	29.793077	0.506917	-71.83	169.03
5	GUIDE	3936888	9.65	9771	-0.124	0.092	0.092	0.154	29.975632	1.145154	2059.90	-910.18
6	GUIDE	4858264	8.58	9829	0.094	0.103	0.073	0.119	30.366209	0.475653	-572.66	-1835.46
7	GUIDE	4858896	9.89	9815	-0.120	0.235	0.135	0.217	30.397960	0.910376	942.66	-2243.35

2.4 Star Slots

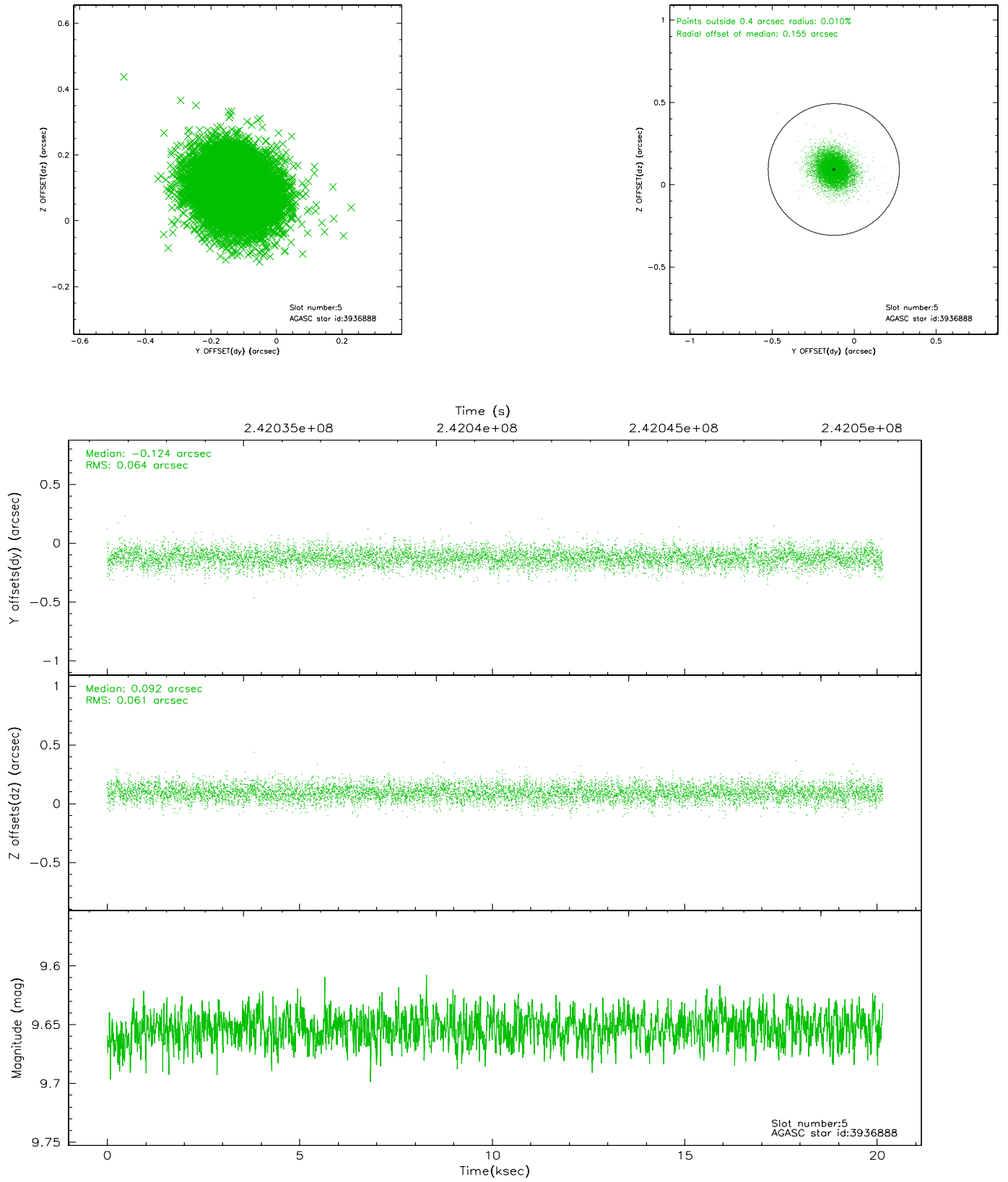
2.4.1 Slot 3



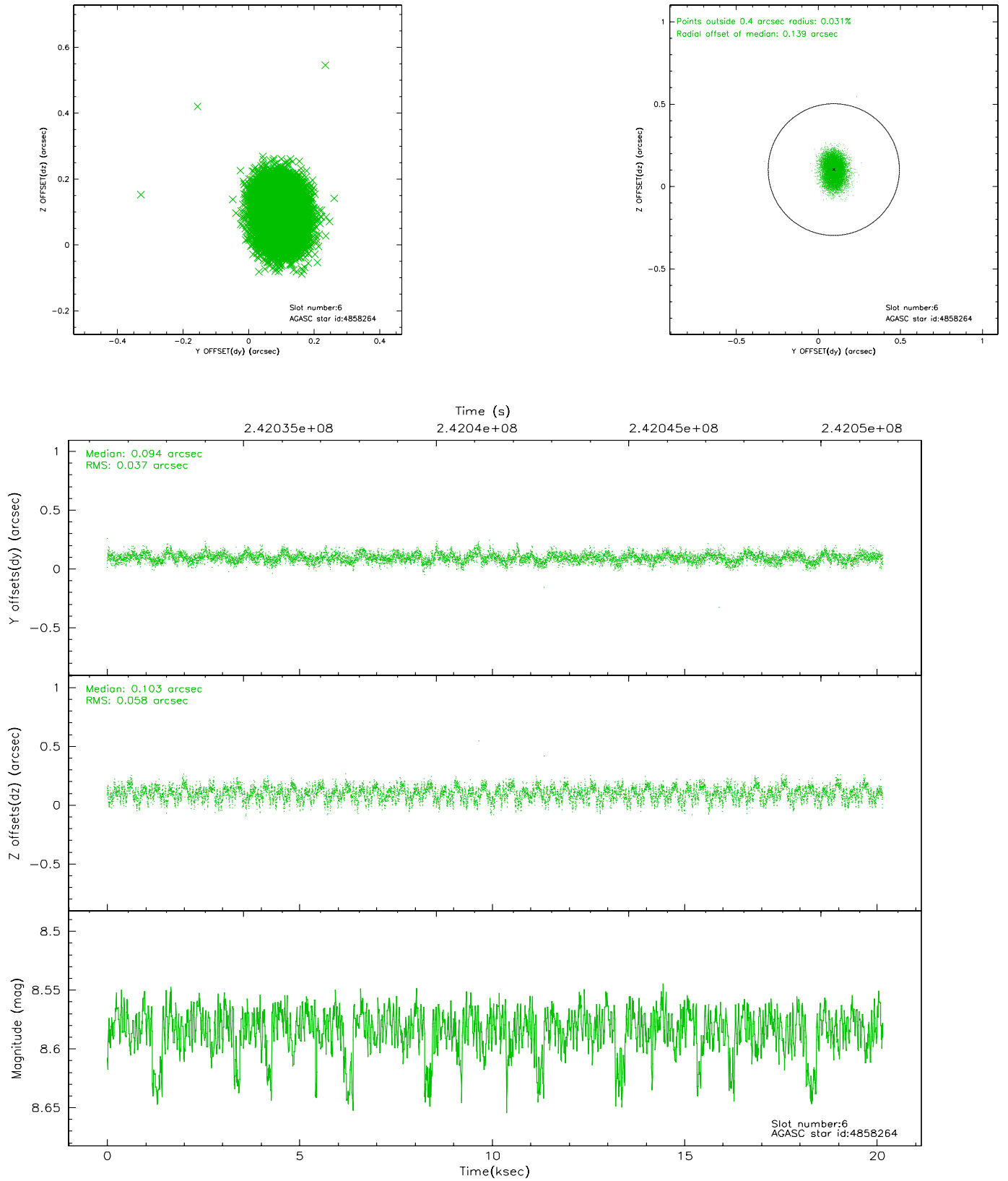
2.4.2 Slot 4



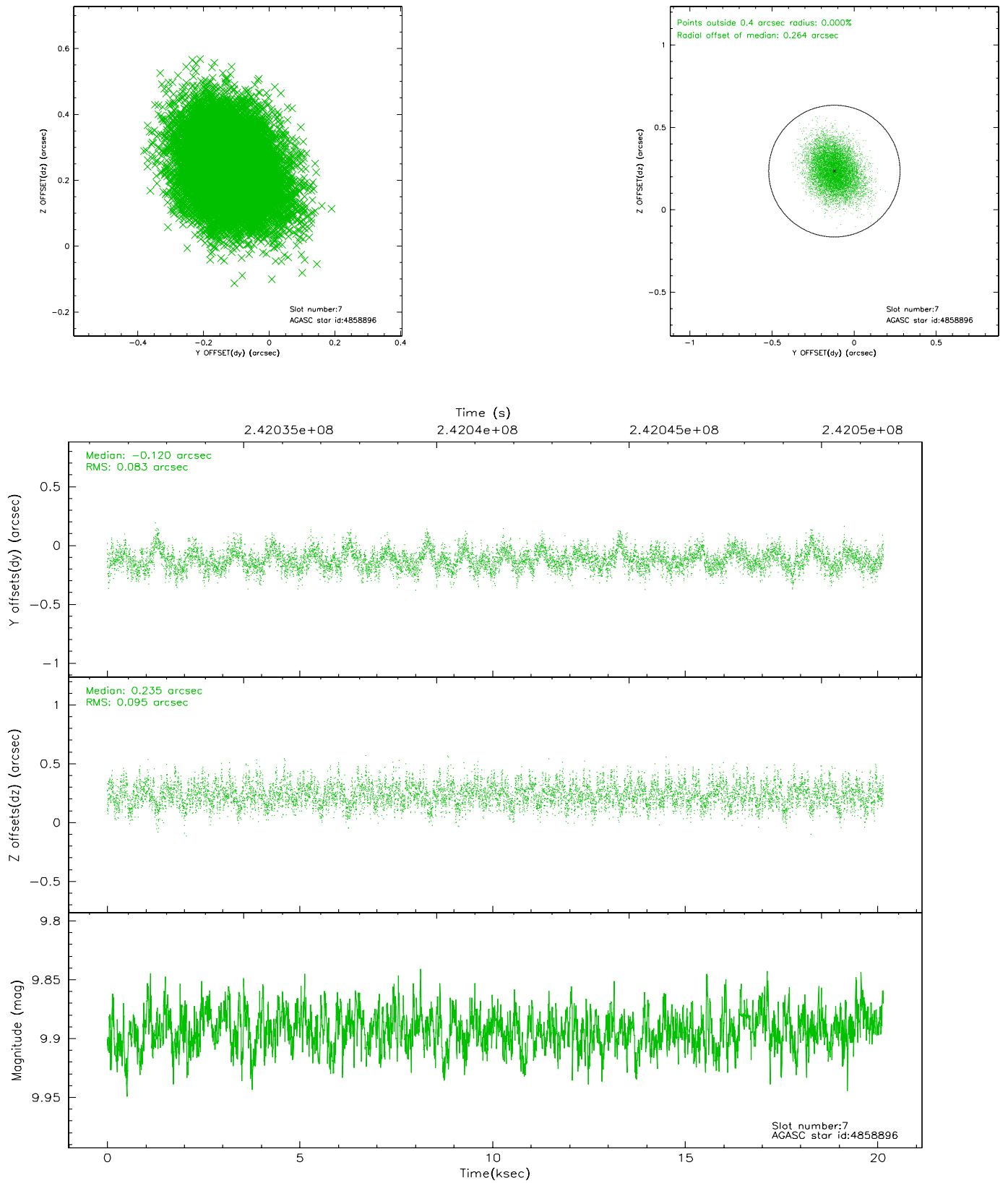
2.4.3 Slot 5



2.4.4 Slot 6

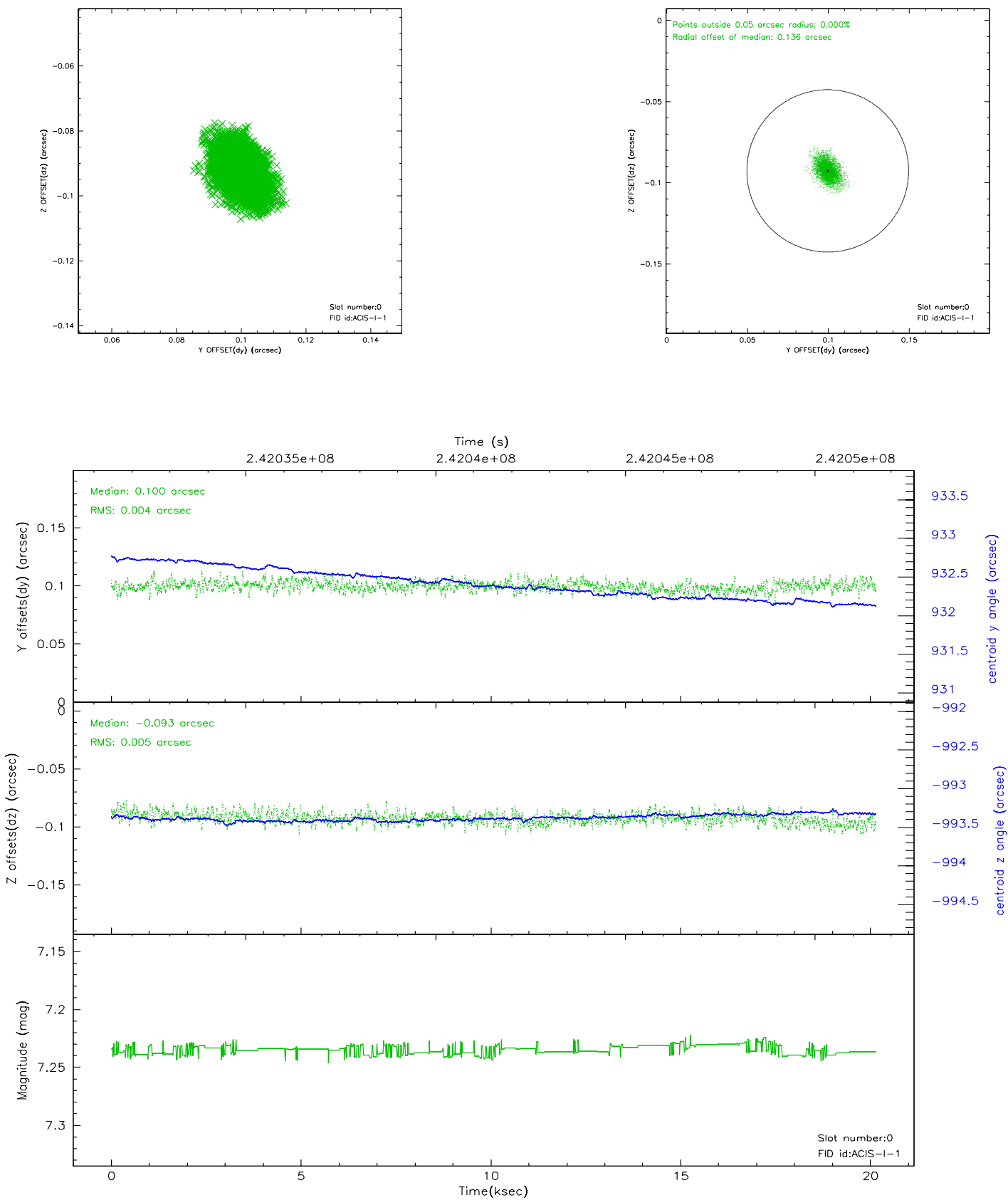


2.4.5 Slot 7

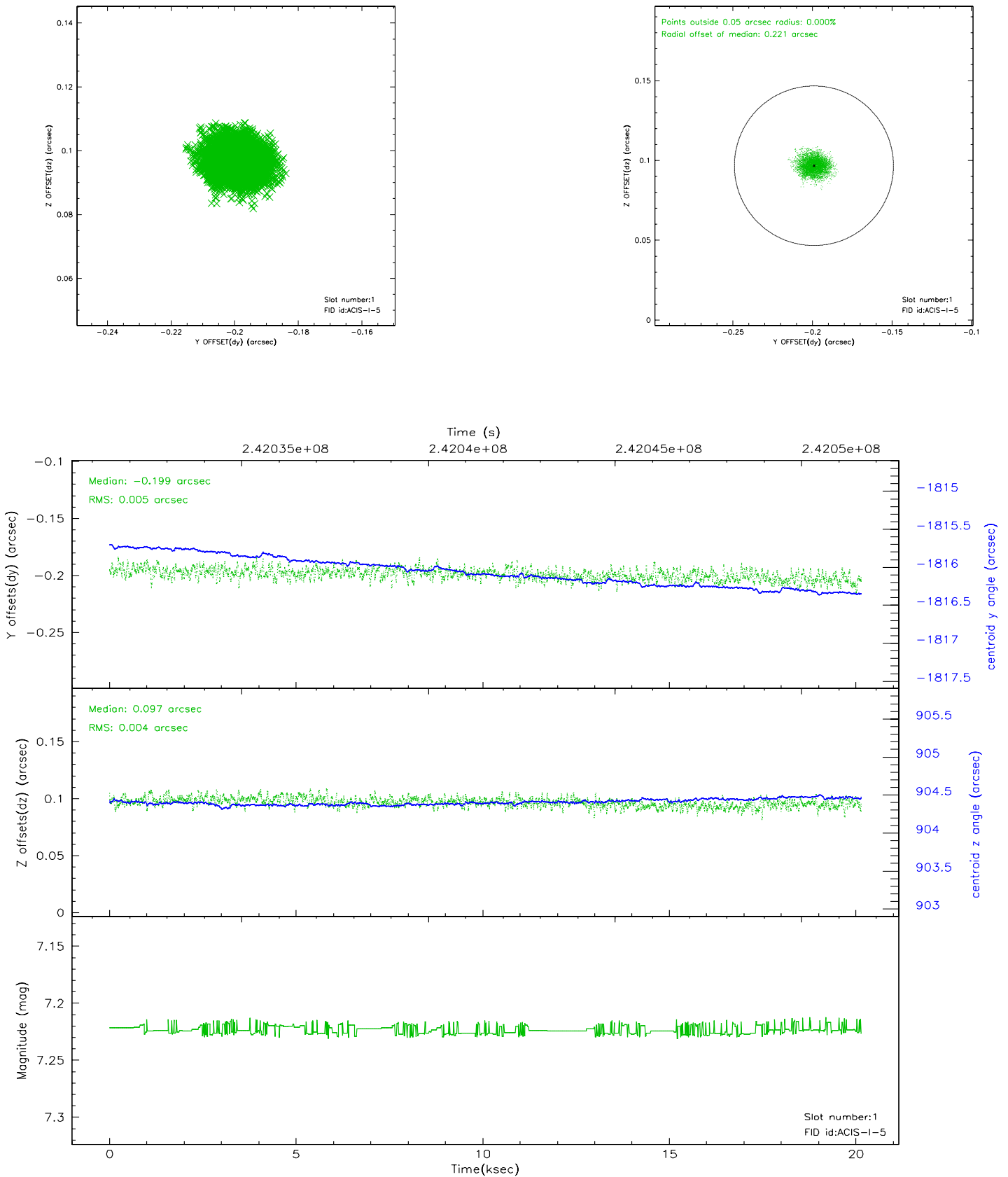


2.5 FID Slots

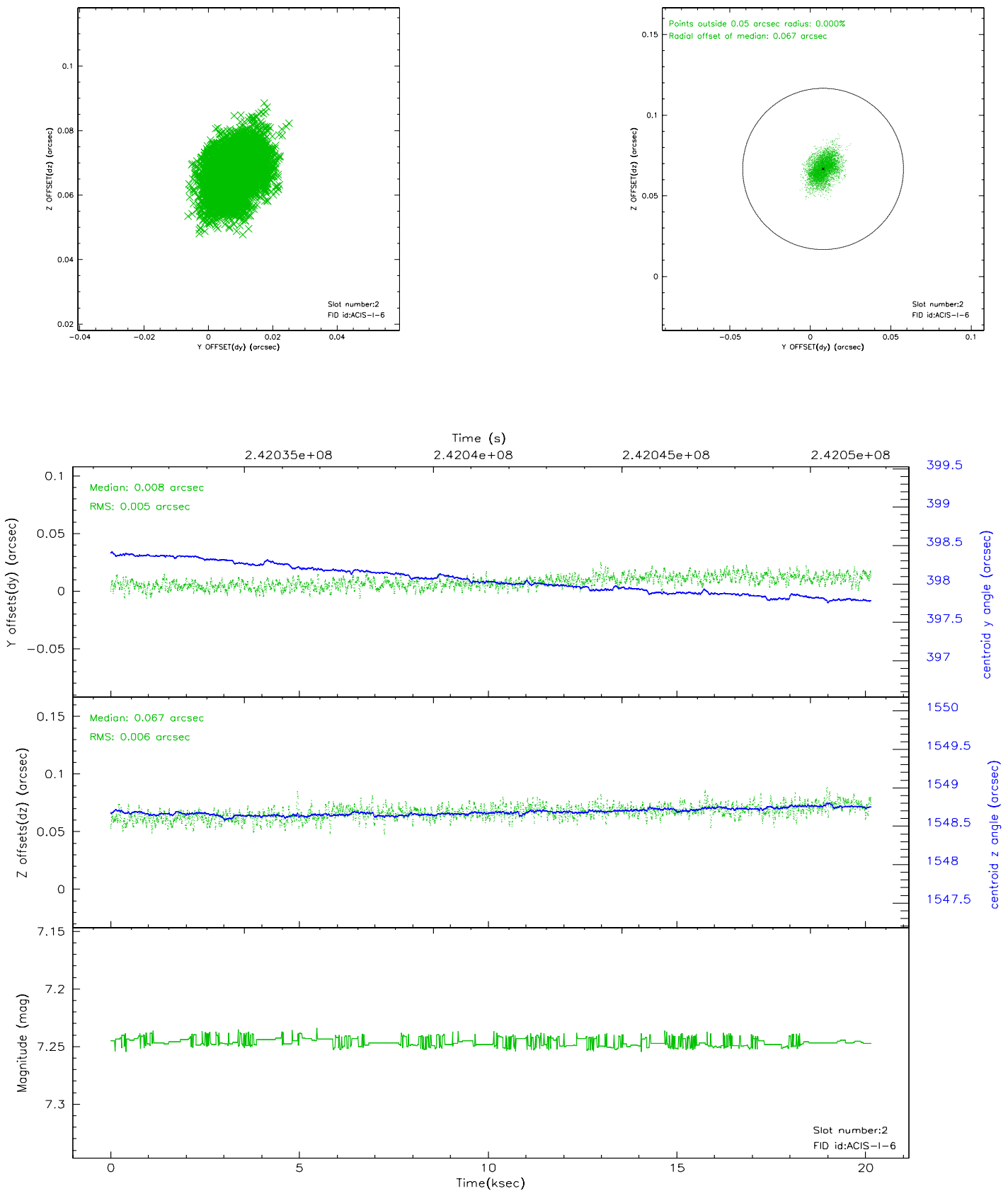
2.5.1 Slot 0



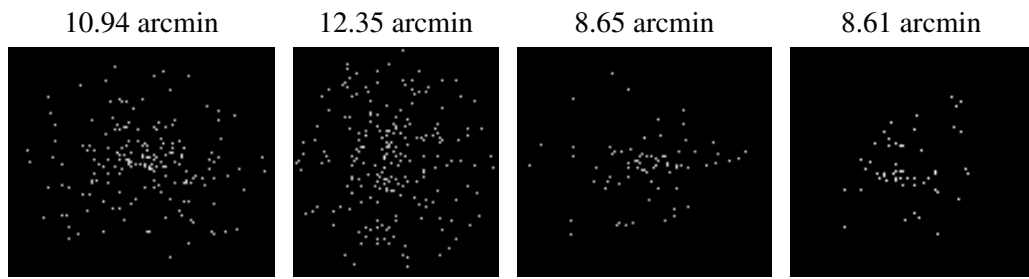
2.5.2 Slot 1



2.5.3 Slot 2



3 Point Sources



A Summary

A.1 Status

V&V Scientist	Beth Sundheim
V&V Date (YYYY-MM-DD)	2006.03.23
V&V Edition	1
V&V Disposition and Status	OK
V&V Charge Time	20.14379

A.2 Comments