

V&V Reference Report

L2 ASCDS Version : 8.4.4

Observation 57507 - L2 Version 2
Chandra X-Ray Center

L2 Processing Date : May 24 2012

Contents

1	Front	2
2	OBI	3
2.1	OBI	3
2.1.1	Images	3
2.1.2	Bias	3
2.1.3	Parameters	4
2.1.4	Events	4
2.2	Compared Parameters	5
2.3	Star Slots	6
2.4	FID Slots	6
A	Summary	7
A.1	Status	7
A.2	Comments	7

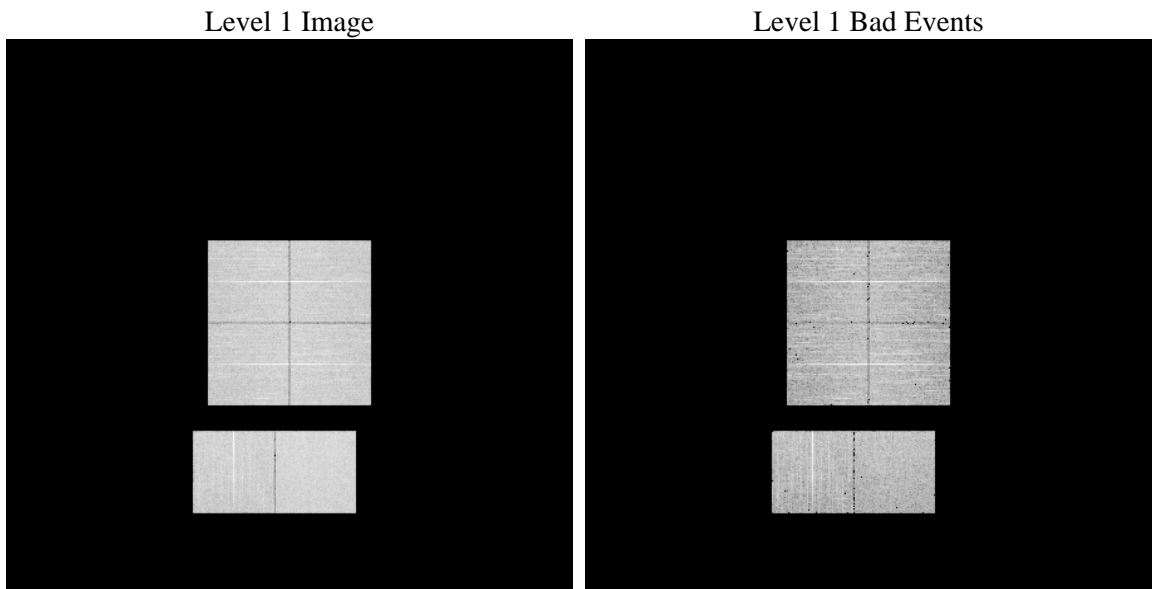
1 Front

seq_num	 	Sequence number
obs_id	57507	Observation id
title	ACIS-012367 diagnostics	Proposal title
observer	CHANDRA engineering request/realtime commanding	Principal investig
object	 	Source name
dtcycle	0	
cycle	P	events from which exps? Prim/Second/Both
ra_targ	0.0	Observer's specified target RA [deg]
dec_targ	0.0	Observer's specified target Dec [deg]
ra_nom	71.97203678078	Nominal RA [deg]
dec_nom	30.015602494132	Nominal Dec [deg]
roll_nom	114.40210754334	Nominal Roll [deg]
revision	2	Processing version of data
ontime	5371.6797027588	Sum of GTIs [s]
livetime	5303.6602599253	Livetime [s]
ontime0	5371.6386627555	Sum of GTIs [s]
ontime1	5371.5976227522	Sum of GTIs [s]
ontime2	5371.5565827489	Sum of GTIs [s]
ontime3	5371.7207427621	Sum of GTIs [s]
ontime6	5368.2745325565	Sum of GTIs [s]
ontime7	5371.6797027588	Sum of GTIs [s]
l2events	348518	Number of level 2 events

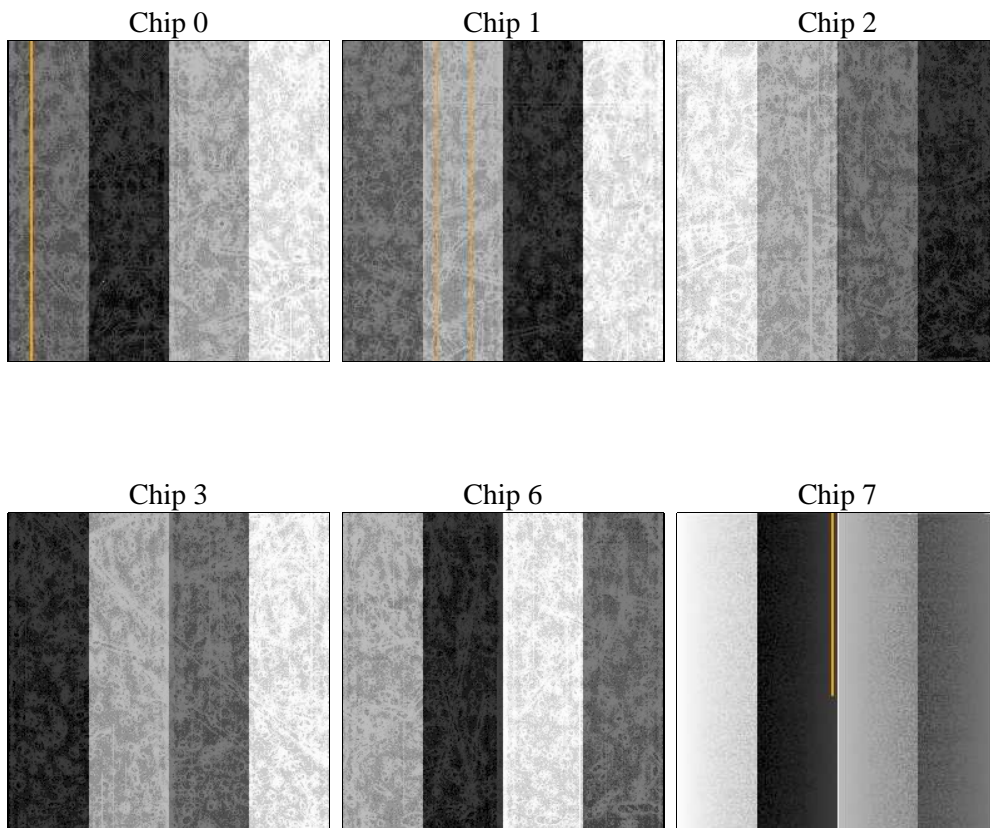
2 OBI

2.1 OBI

2.1.1 Images



2.1.2 Bias



2.1.3 Parameters

obi_num	0	Obi number	sched_exp_time	0.0	[s] Scheduled observation exposure time
ascdsver	8.4.4	Processing system revision	ontime	5371.6797027588	Sum of GTIs [s]
caldsver	4.4.9	 	ontime0	5371.6386627555	Sum of GTIs [s]
date	2012-05-24T03:18:31	Date and time of file creation	ontime1	5371.5976227522	Sum of GTIs [s]
revision	2	Processing version of data	ontime2	5371.5565827489	Sum of GTIs [s]
			ontime3	5371.7207427621	Sum of GTIs [s]
			ontime6	5368.2745325565	Sum of GTIs [s]
			ontime7	5371.6797027588	Sum of GTIs [s]
			l1events	663563	Number of level 1 events

2.1.4 Events

	ccd 0	ccd 1	ccd 2	ccd 3	ccd 6	ccd 7		ccd 0	ccd 1	ccd 2	ccd 3	ccd 6	ccd 7
level 1 events	105579	104845	105051	109281	111139	127668	grade 0 events	30802	31026	31393	32038	31463	16094
rejected events	48948	47560	48449	51860	52168	46532		29%	29%	29%	29%	28%	12%
rejected %	46%	45%	46%	47%	46%	36%	grade 1 events	233	199	245	294	194	112
								0%	0%	0%	0%	0%	0%
							grade 2 events	10333	10600	10072	10011	10768	17869
								9%	10%	9%	9%	9%	13%
							grade 3 events	3898	3796	3875	3981	3992	7553
								3%	3%	3%	3%	3%	5%
							grade 4 events	3931	3805	3910	4106	3856	7531
								3%	3%	3%	3%	3%	5%
							grade 5 events	2602	2736	2489	2951	2993	7445
								2%	2%	2%	2%	2%	5%
							grade 6 events	8687	9132	8406	8344	10031	33563
								8%	8%	8%	7%	9%	26%
							grade 7 events	45093	43551	44661	47556	47842	37501
								42%	41%	42%	43%	43%	29%

2.2 Compared Parameters

Parameter	Planned	Actual	Parameter	Planned	Actual
Instrument	ACIS	ACIS	Obspar format version number	7	7
Detector	ACIS-012367	ACIS-012367	Obspar file type	PREDICTED	ACTUAL
Grating	NONE	NONE	Obspar update status	NONE	UPDATED
Data mode	FAINT	FAINT	Number of optional ACIS chips dropped	0	0
Observation mode	SECONDARY	SECONDARY	On-chip summing requested	N	N
[deg] Pointing RA	0	71.97203678077959	Subarray requested	NONE	NONE
[deg] Pointing Dec	0	30.01560249413206	Alternating exposures requested	N	N
[deg] Pointing Roll	0.0	114.4021075433353	[s] Primary exposure time	3.2	3.2
[mm] SIM focus pos	-1.429586	-0.6828225247311905			
[mm] SIM defocus	0.1037507710433287	0.8505141146731063			
[mm] SIM translation stage pos	250.455976	250.466033080201			
[mm] SIM translation stage offset	0	-0.01005468664627074			
[s] Observation start time (MET)	342963522.715572	342963521.69058			
Observation start date	2008-11-13T11:38:43	2008-11-13T11:38:41			
[s] Observation end time (MET)	342972581.666019	342972580.64102			
Observation end date	2008-11-13T14:09:42	2008-11-13T14:09:40			
Read mode	TIMED	TIMED			

2.3 Star Slots

2.4 FID Slots

A Summary

A.1 Status

V&V Scientist	Jen Lauer
V&V Date (YYYY-MM-DD)	2012.05.31
V&V Edition	1
V&V Disposition and Status	OK
V&V Charge Time	5.3716797027588

A.2 Comments