

V&V Reference Report

L2 ASCDS Version : 8.4.5

Observation 57137 - L2 Version 2
Chandra X-Ray Center

L2 Processing Date : Jun 7 2012

Contents

1	Front	2
2	OBI	3
2.1	OBI	3
2.1.1	Images	3
2.1.2	Bias	3
2.1.3	Parameters	4
2.1.4	Events	4
2.2	Compared Parameters	5
2.3	Star Slots	6
2.4	FID Slots	6
A	Summary	7
A.1	Status	7
A.2	Comments	7

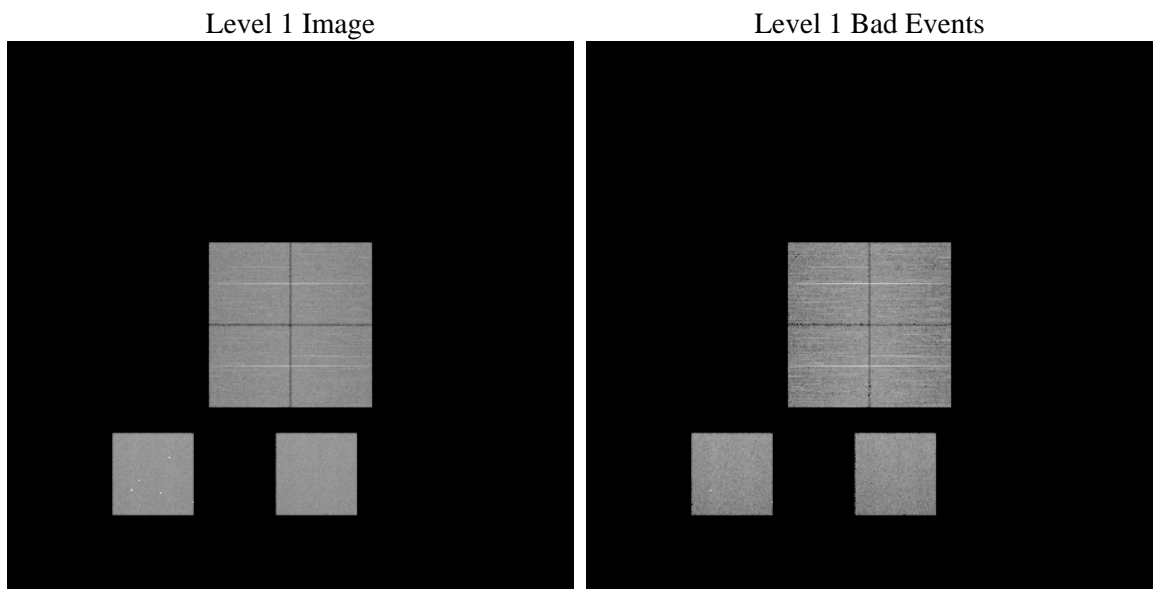
1 Front

seq_num	 	Sequence number
obs_id	57137	Observation id
title	ACIS-012357 diagnostics	Proposal title
observer	CHANDRA engineering request/realtime commanding	Principal investig
object	 	Source name
dtycle	0	
cycle	P	events from which exps? Prim/Second/Both
ra_targ	0.0	Observer's specified target RA [deg]
dec_targ	0.0	Observer's specified target Dec [deg]
ra_nom	217.9744856144	Nominal RA [deg]
dec_nom	9.9861616162143	Nominal Dec [deg]
roll_nom	176.01375125753	Nominal Roll [deg]
revision	2	Processing version of data
ontime	8454.3999685645	Sum of GTIs [s]
livetime	8347.3452655341	Livetime [s]
ontime0	8454.3999685645	Sum of GTIs [s]
ontime1	8451.1589682698	Sum of GTIs [s]
ontime2	8454.3999685645	Sum of GTIs [s]
ontime3	8454.3999685645	Sum of GTIs [s]
ontime5	8454.3999685645	Sum of GTIs [s]
ontime7	8454.3999685645	Sum of GTIs [s]
l2events	544688	Number of level 2 events

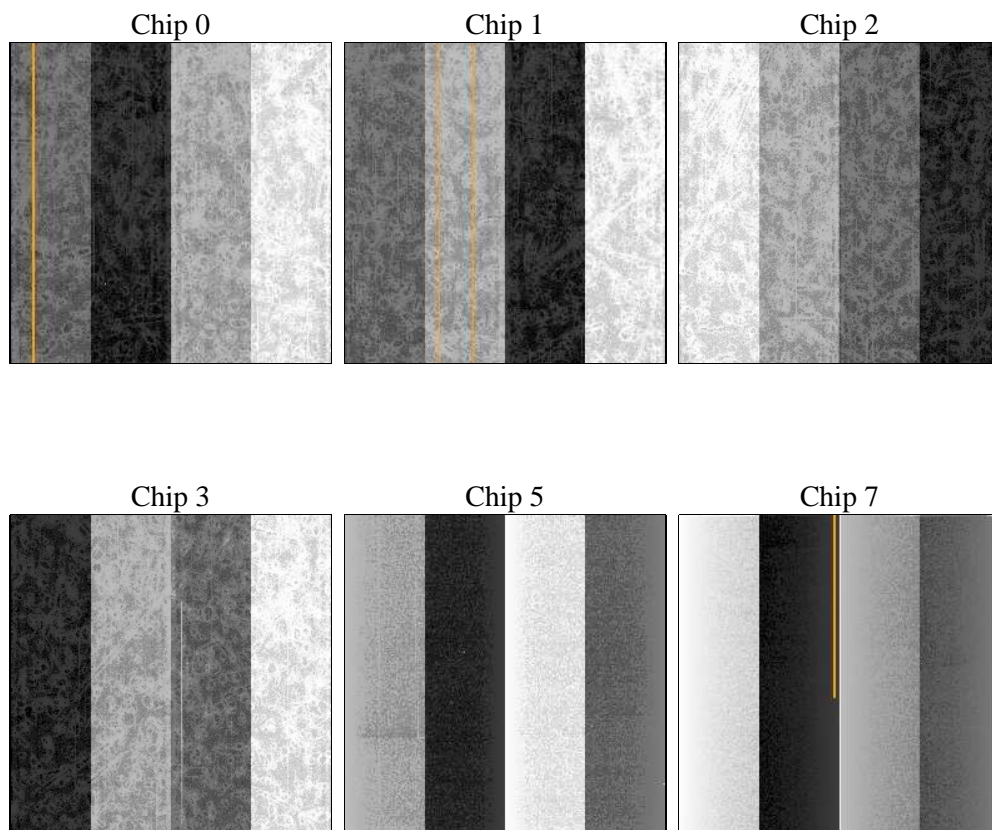
2 OBI

2.1 OBI

2.1.1 Images



2.1.2 Bias



2.1.3 Parameters

obi_num	0	Obi number	sched_exp_time	0.0	[s] Scheduled observation exposure time
ascdsver	8.4.5	Processing system revision	ontime	8454.3999685645	Sum of GTIs [s]
caldsver	4.4.10	 	ontime0	8454.3999685645	Sum of GTIs [s]
date	2012-06-06T10:59:52	Date and time of file creation	ontime1	8451.1589682698	Sum of GTIs [s]
revision	2	Processing version of data	ontime2	8454.3999685645	Sum of GTIs [s]
			ontime3	8454.3999685645	Sum of GTIs [s]
			ontime5	8454.3999685645	Sum of GTIs [s]
			ontime7	8454.3999685645	Sum of GTIs [s]
			l1events	1044622	Number of level 1 events

2.1.4 Events

	ccd 0	ccd 1	ccd 2	ccd 3	ccd 5	ccd 7		ccd 0	ccd 1	ccd 2	ccd 3	ccd 5	ccd 7
level 1 events	157678	158180	161062	165325	206392	195985	grade 0 events	43690	43108	44059	45035	22122	22538
rejected events	76144	75821	80040	82487	78096	73790		27%	27%	27%	27%	10%	11%
rejected %	48%	47%	49%	49%	37%	37%	grade 1 events	331	280	405	377	336	155
								0%	0%	0%	0%	0%	0%
							grade 2 events	14671	15364	14146	14441	44899	26503
								9%	9%	8%	8%	21%	13%
							grade 3 events	5424	5527	5593	5660	5557	11400
								3%	3%	3%	3%	2%	5%
							grade 4 events	5429	5438	5494	5546	5424	11078
								3%	3%	3%	3%	2%	5%
							grade 5 events	4236	4350	4015	4715	10476	11775
								2%	2%	2%	2%	5%	6%
							grade 6 events	12320	12922	11730	12156	50294	50676
								7%	8%	7%	7%	24%	25%
							grade 7 events	71577	71191	75620	77395	67284	61860
								45%	45%	46%	46%	32%	31%

2.2 Compared Parameters

Parameter	Planned	Actual	Parameter	Planned	Actual
Instrument	ACIS	ACIS	Obspar format version number	7	7
Detector	ACIS-012357	ACIS-012357	Obspar file type	PREDICTED	ACTUAL
Grating	NONE	NONE	Obspar update status	NONE	UPDATED
Data mode	FAINT	FAINT	Number of optional ACIS chips dropped	0	0
Observation mode	SECONDARY	SECONDARY	On-chip summing requested	N	N
[deg] Pointing RA	0	217.9744856143973	Subarray requested	NONE	NONE
[deg] Pointing Dec	0	9.986161616214329	Alternating exposures requested	N	N
[deg] Pointing Roll	0.0	176.0137512575263	[s] Primary exposure time	3.2	3.2
[mm] SIM focus pos	-1.429586	-0.7809083437167272			
[mm] SIM defocus	0.1037507710433287	0.7524282956875696			
[mm] SIM translation stage pos	250.455976	250.466033080201			
[mm] SIM translation stage offset	0	-0.01005468664627074			
[s] Observation start time (MET)	357358397.929124	357358396.90412			
Observation start date	2009-04-29T02:13:18	2009-04-29T02:13:16			
[s] Observation end time (MET)	357368578.229631	357368577.20463			
Observation end date	2009-04-29T05:02:58	2009-04-29T05:02:57			
Read mode	TIMED	TIMED			

2.3 Star Slots

2.4 FID Slots

A Summary

A.1 Status

V&V Scientist	Beth Sundheim
V&V Date (YYYY-MM-DD)	2012.06.11
V&V Edition	1
V&V Disposition and Status	OK
V&V Charge Time	8.4543999685645

A.2 Comments