

# V&V Reference Report

## L2 ASCDS Version : 7.6.7.1

Observation 5707 - L2 Version 002  
Chandra X-Ray Center

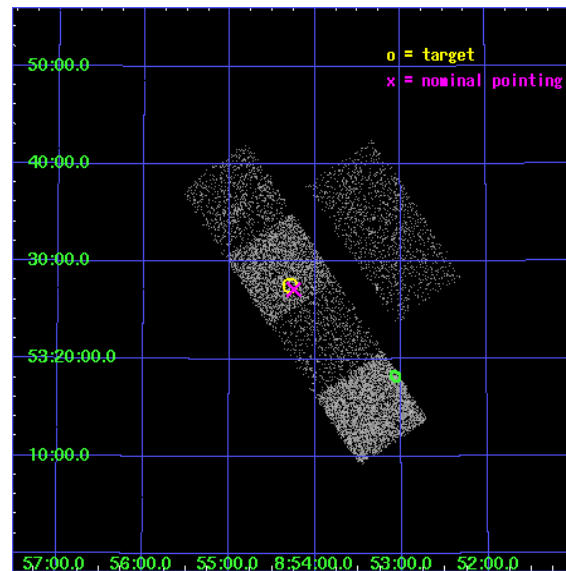
L2 Processing Date : Mar 17 2006

## Contents

<b>1</b>	<b>Front</b>	<b>2</b>
<b>2</b>	<b>OBI</b>	<b>3</b>
2.1	OBI . . . . .	3
2.1.1	Images . . . . .	3
2.1.2	Bias . . . . .	3
2.1.3	Parameters . . . . .	4
2.1.4	Events . . . . .	4
2.2	Compared Parameters . . . . .	5
2.3	Aspect . . . . .	6
2.4	Star Slots . . . . .	9
2.4.1	Slot 3 . . . . .	9
2.4.2	Slot 4 . . . . .	10
2.4.3	Slot 5 . . . . .	11
2.4.4	Slot 6 . . . . .	12
2.4.5	Slot 7 . . . . .	13
2.5	FID Slots . . . . .	14
2.5.1	Slot 0 . . . . .	14
2.5.2	Slot 1 . . . . .	15
2.5.3	Slot 2 . . . . .	16
<b>3</b>	<b>Point Sources</b>	<b>17</b>
<b>A</b>	<b>Summary</b>	<b>18</b>
A.1	Status . . . . .	18
A.2	Comments . . . . .	18

# 1 Front

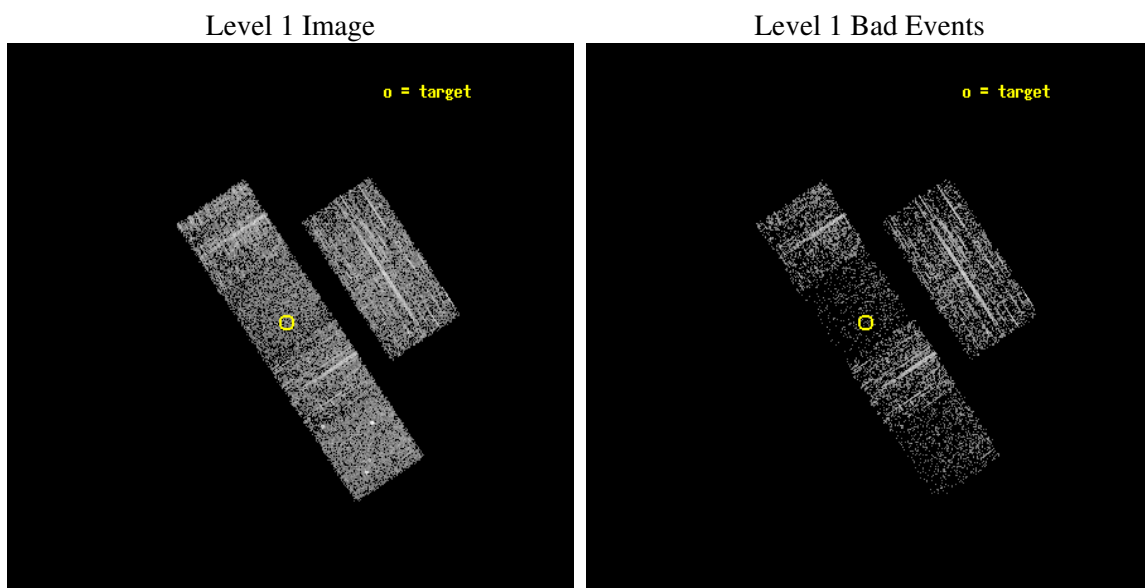
seq_num	701129
obs_id	5707
title	A Uniform Chandra Survey of the Brightest and Most Extreme SDSS BALQSOs
observer	Prof. Scott Anderson
object	SDSS J085417.61+532735.3
dtcycle	0
cycle	P
ra_targ	133.573333
dec_targ	53.459806
ra_nom	133.56205008145
dec_nom	53.45287873929
roll_nom	236.61521781203
revision	2
ontime	1974.3999926448
livetime	1949.398951097
ontime2	1967.9180022776
ontime3	1974.3999926448
ontime5	1974.3999926448
ontime6	1971.159022361
ontime7	1974.3999926448
ontime8	1974.3999926448
l2events	11360



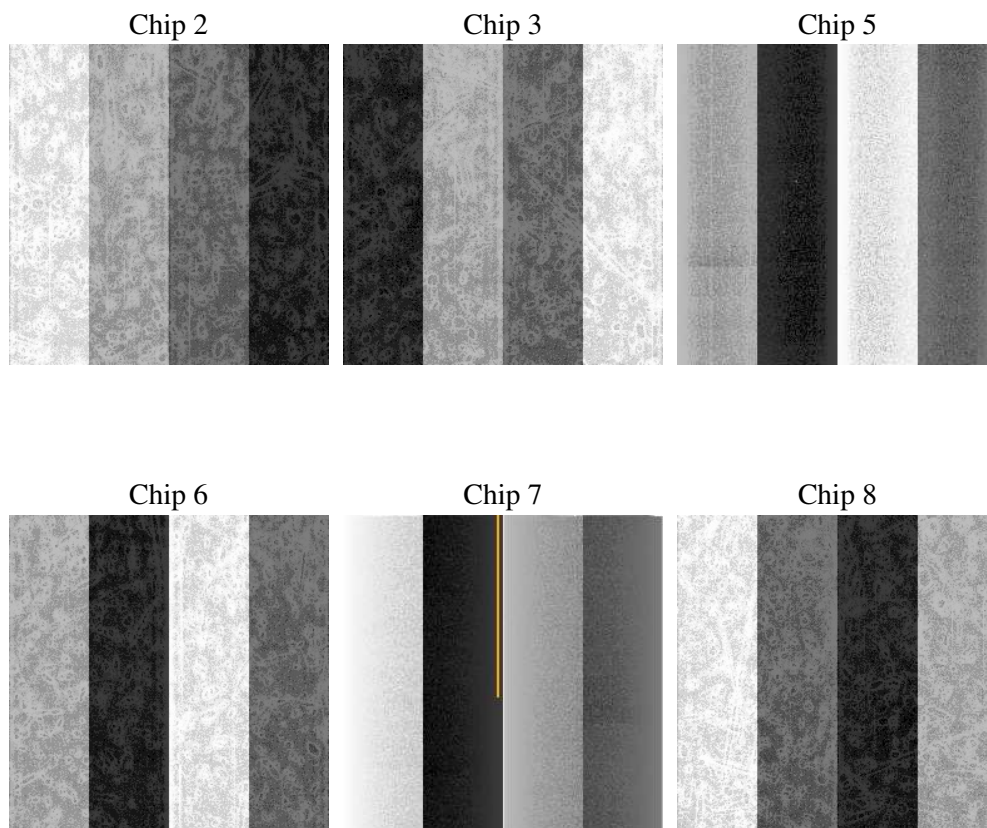
## 2 OBI

### 2.1 OBI

#### 2.1.1 Images



#### 2.1.2 Bias



### 2.1.3 Parameters

obi_num	0
ascdsver	7.6.7.1
caldsver	3.2.1
date	2006-03-17T15:14:18
revision	2

sched_exp_time	1926.816000
ontime	1980.2526600361
ontime2	1973.7706397772
ontime3	1980.2526301444
ontime5	1980.2526600361
ontime6	1977.0116598606
ontime7	1980.2526600361
ontime8	1980.2526301444
l1events	57414

### 2.1.4 Events

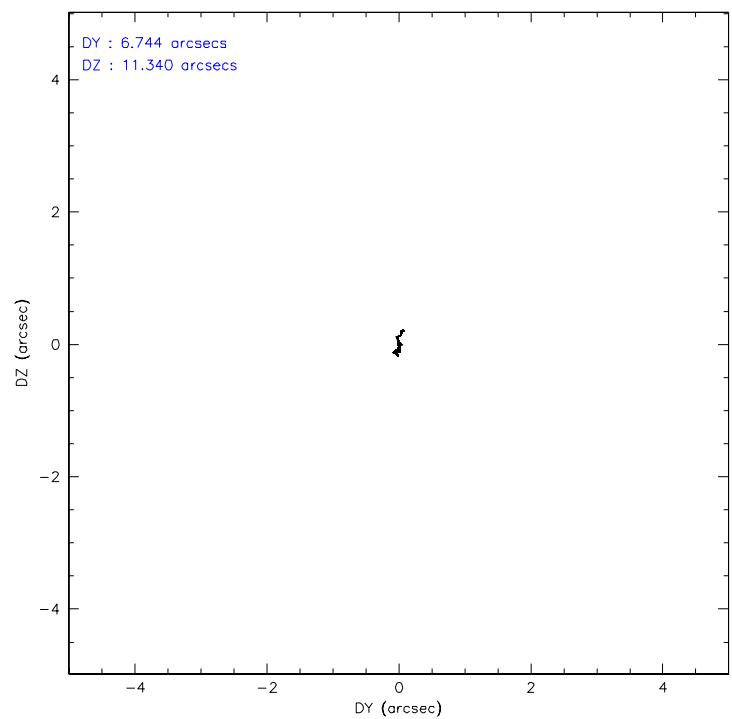
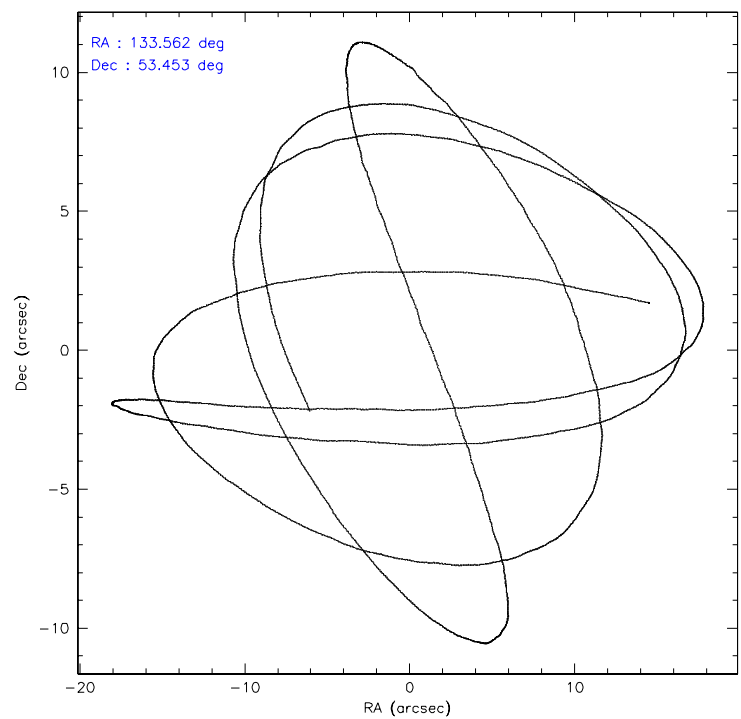
	ccd 2	ccd 3	ccd 5	ccd 6	ccd 7	ccd 8
level 1 events	10829	10454	9272	9755	6018	11086
rejected events	9855	9553	3677	8755	2728	8142
rejected %	91%	91%	39%	89%	45%	73%

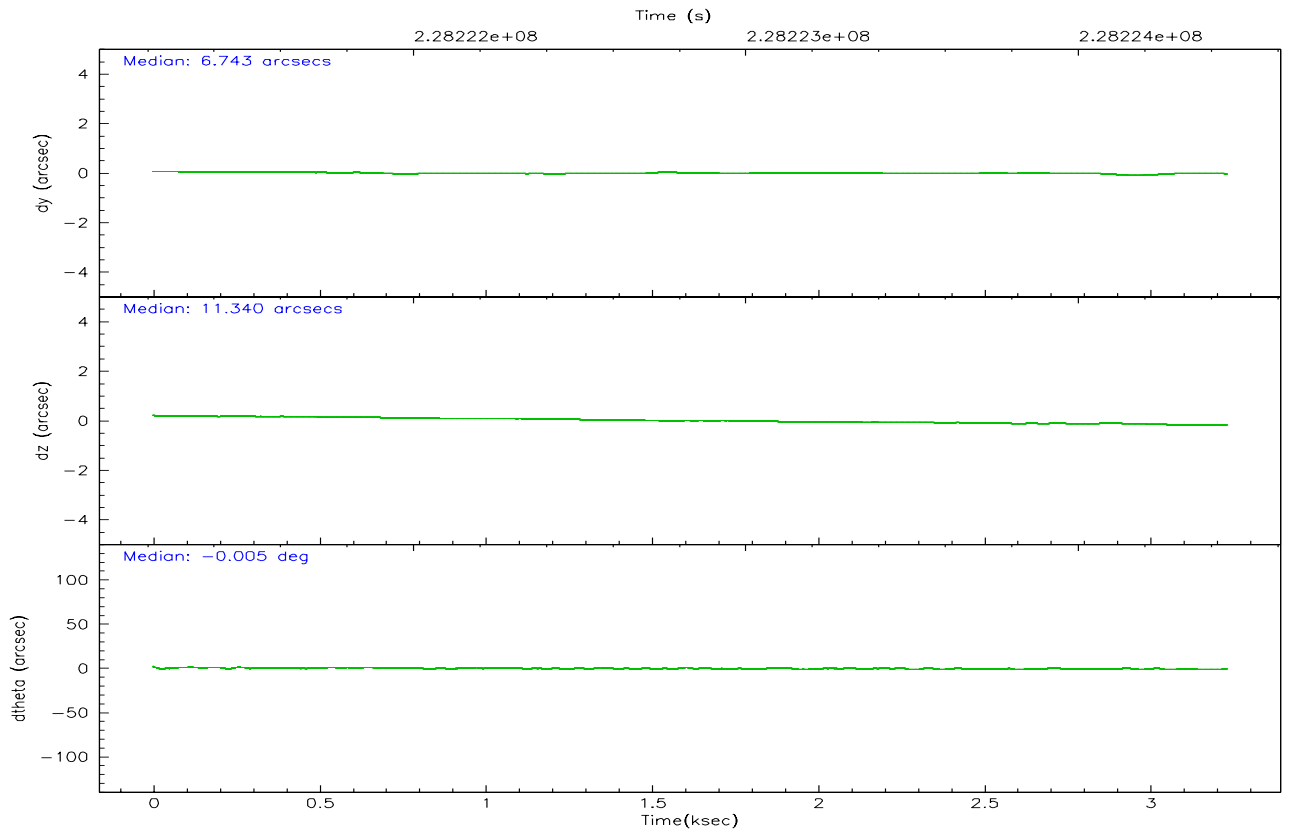
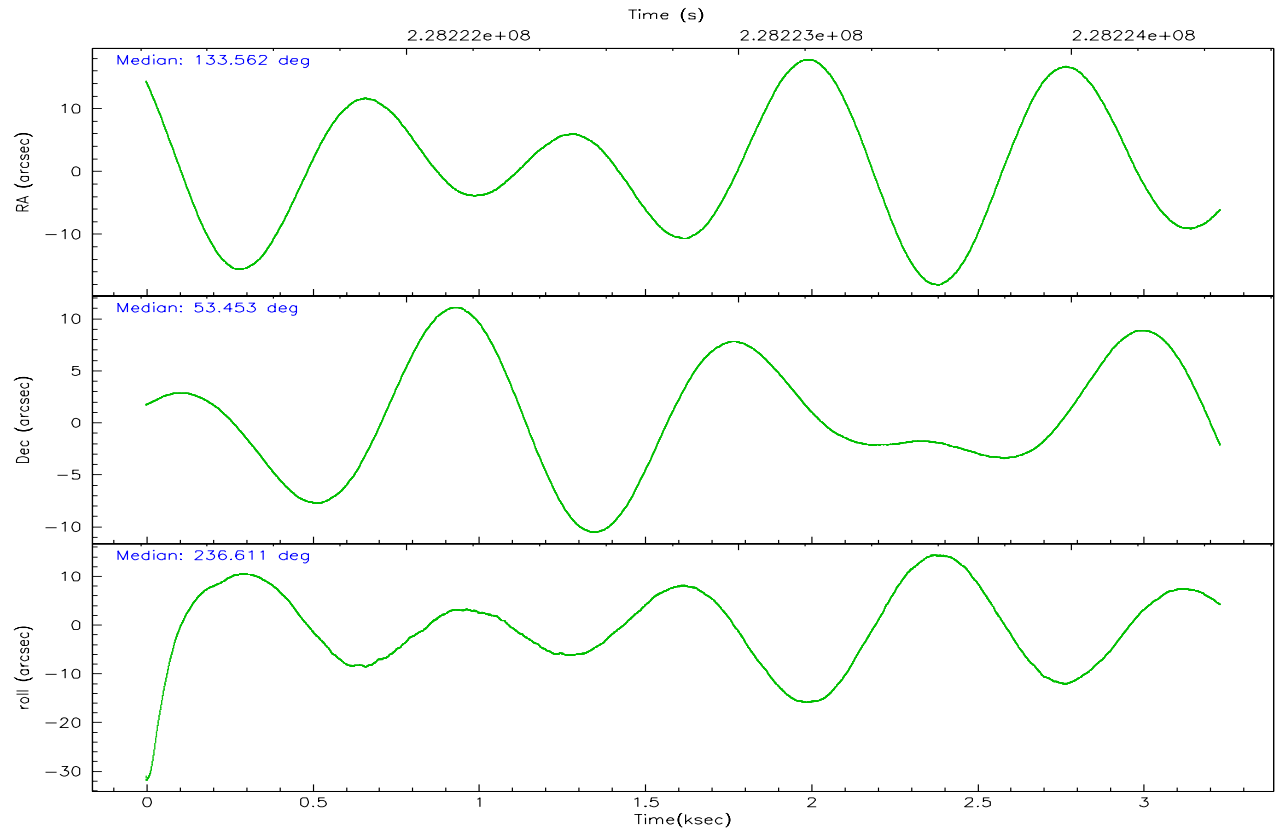
	ccd 2	ccd 3	ccd 5	ccd 6	ccd 7	ccd 8
grade 0 events	409	392	773	427	312	796
	3%	3%	8%	4%	5%	7%
grade 1 events	9	6	34	4	8	10
	0%	0%	0%	0%	0%	0%
grade 2 events	209	180	1888	215	928	726
	1%	1%	20%	2%	15%	6%
grade 3 events	109	114	198	100	243	299
	1%	1%	2%	1%	4%	2%
grade 4 events	97	88	195	104	224	278
	0%	0%	2%	1%	3%	2%
grade 5 events	164	196	511	201	508	327
	1%	1%	5%	2%	8%	2%
grade 6 events	155	132	2560	156	1593	848
	1%	1%	27%	1%	26%	7%
grade 7 events	9677	9346	3113	8548	2202	7802
	89%	89%	33%	87%	36%	70%

## 2.2 Compared Parameters

Parameter	Planned	Actual	Parameter	Planned	Actual
Instrument	ACIS	ACIS	Obspar format version number	6	6
Detector	ACIS-235678	ACIS-235678	Obspar file type	PREDICTED	ACTUAL
Grating	NONE	NONE	Obspar update status	NONE	UPDATED
Data mode	VFAINT	VFAINT	On-chip summing requested	N	N
Observation mode	POINTING	POINTING	Subarray requested	NONE	NONE
Pointing RA	133.564237	133.5620500814539	Alternating exposures requested	N	N
Pointing Dec	53.479982	53.45287873929035	Primary exposure time	0.000000	3.2
Pointing Roll	236.456828	236.6152178120286			
SIM focus pos (mm)	-0.684267	-0.6828225247311905			
SIM defocus (mm)	0	0.001444936568705701			
SIM translation stage pos (mm)	-190.132523	-190.1425803651734			
SIM translation stage offset (mm)	0	0.01005778216563158			
Observation start time	228222519.184000	228220950.817			
Observation start date	2005-03-26T11:07:35	2005-03-26T10:42:30			
Observation end time	228224446.184000	228224669.00467			
Observation end date	2005-03-26T11:39:42	2005-03-26T11:44:29			
Read mode	TIMED	TIMED			

## 2.3 Aspect





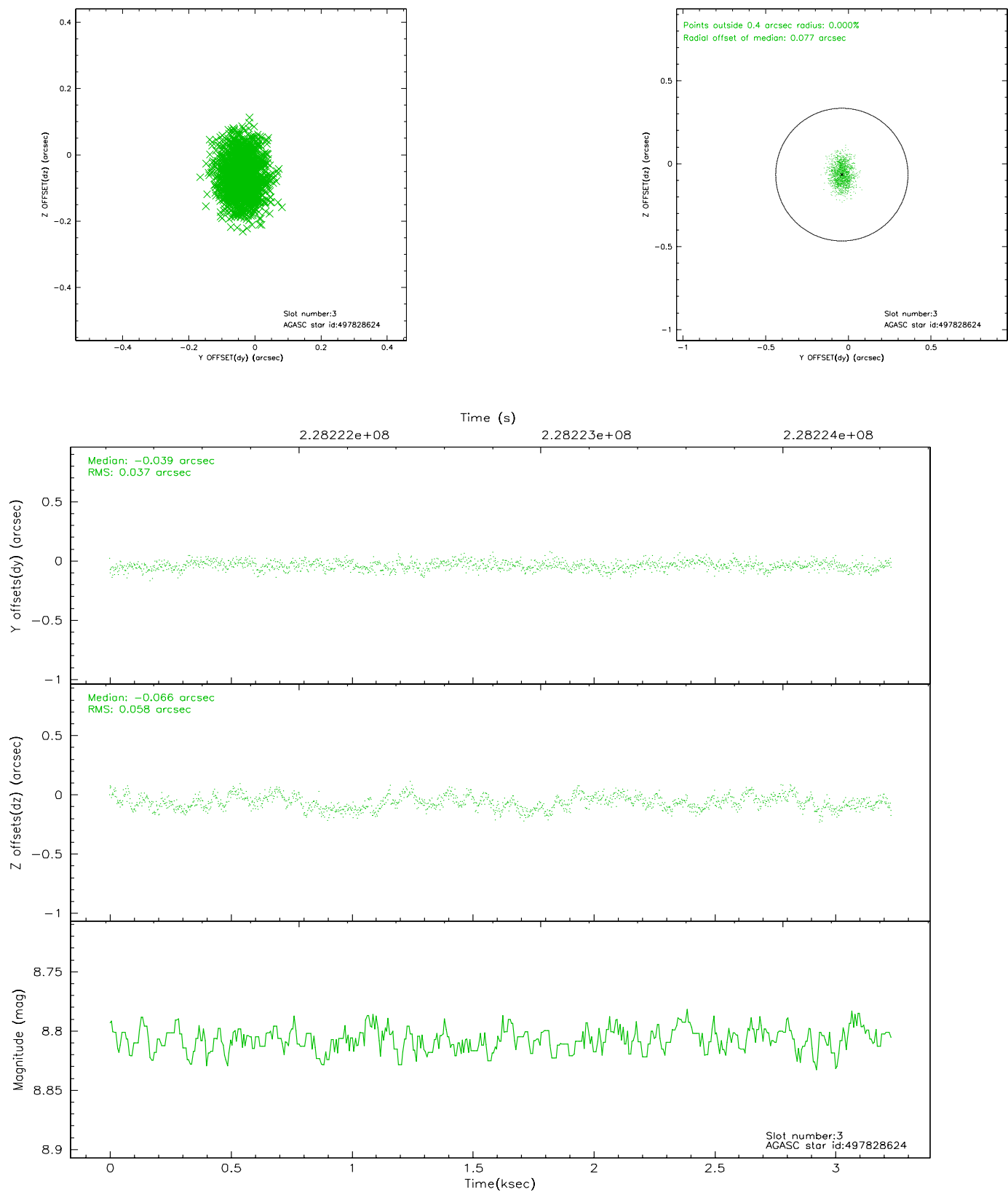
### Slot Statistics

slot	status	id	mag	n_pts	med_dy	med_dz	dr1	dr2	ra	dec	mean_y	mean_z
0	FID	ACIS-S-2	7.11	788	-0.036	0.007	0.007	0.011	0.000000	0.000000	-759.50	-1732.59
1	FID	ACIS-S-4	7.21	788	0.032	0.016	0.005	0.010	0.000000	0.000000	2152.92	173.90
2	FID	ACIS-S-5	7.23	789	-0.027	-0.013	0.006	0.010	0.000000	0.000000	-1809.83	169.74
3	GUIDE	497828624	8.81	1578	-0.039	-0.066	0.074	0.119	133.330428	53.735809	-492.71	-923.93
4	GUIDE	498740032	9.21	1576	0.052	-0.044	0.072	0.116	133.451823	52.890932	1902.23	968.16
5	GUIDE	498741712	7.75	1578	0.066	0.040	0.051	0.084	133.739337	52.794638	1846.94	1682.09
6	GUIDE	498742248	7.64	1578	-0.070	0.027	0.060	0.097	133.734200	52.956447	1368.08	1350.05
7	GUIDE	498743456	8.81	1577	-0.013	0.044	0.080	0.122	134.055377	53.058707	674.80	1723.10

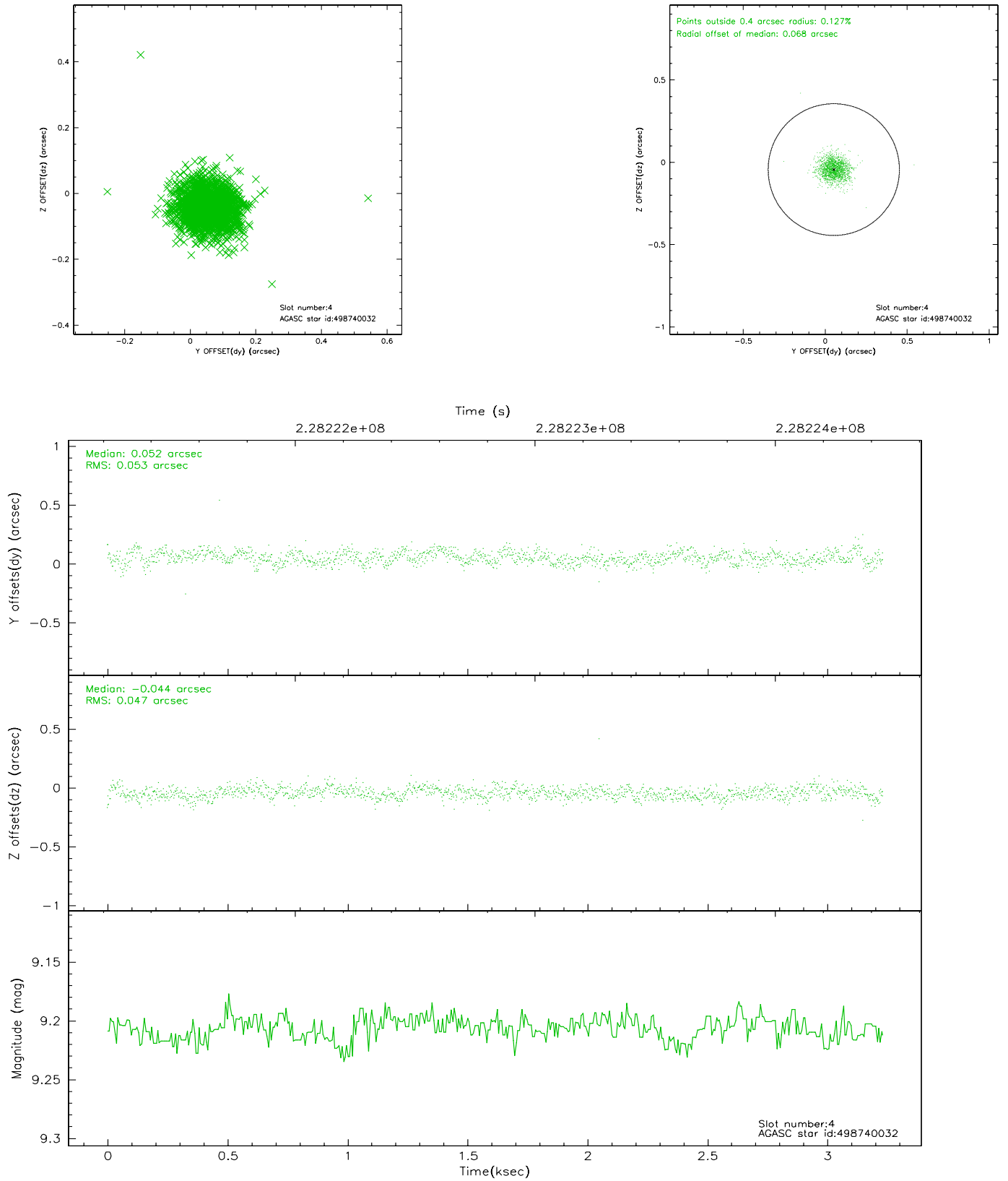


## 2.4 Star Slots

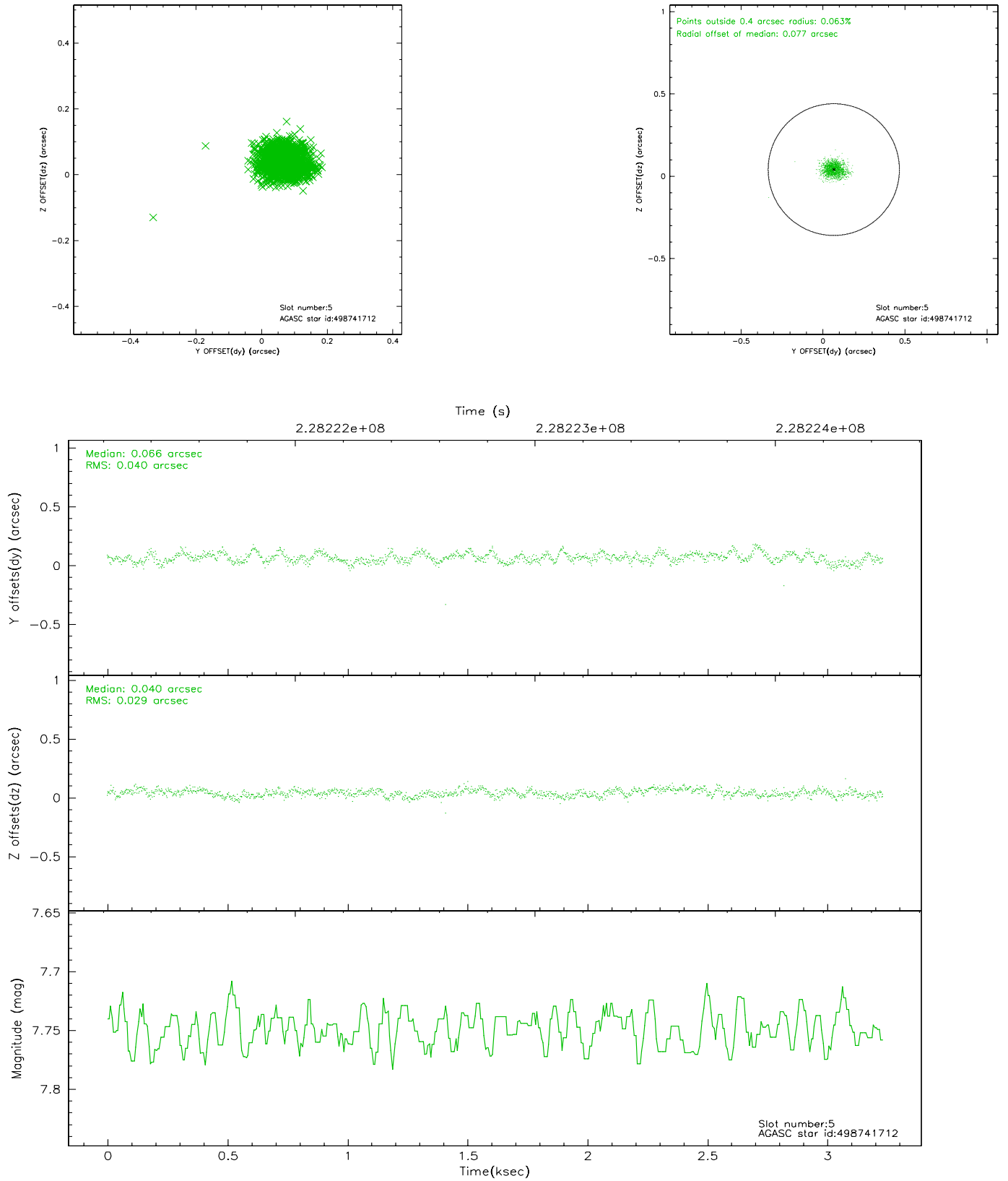
### 2.4.1 Slot 3



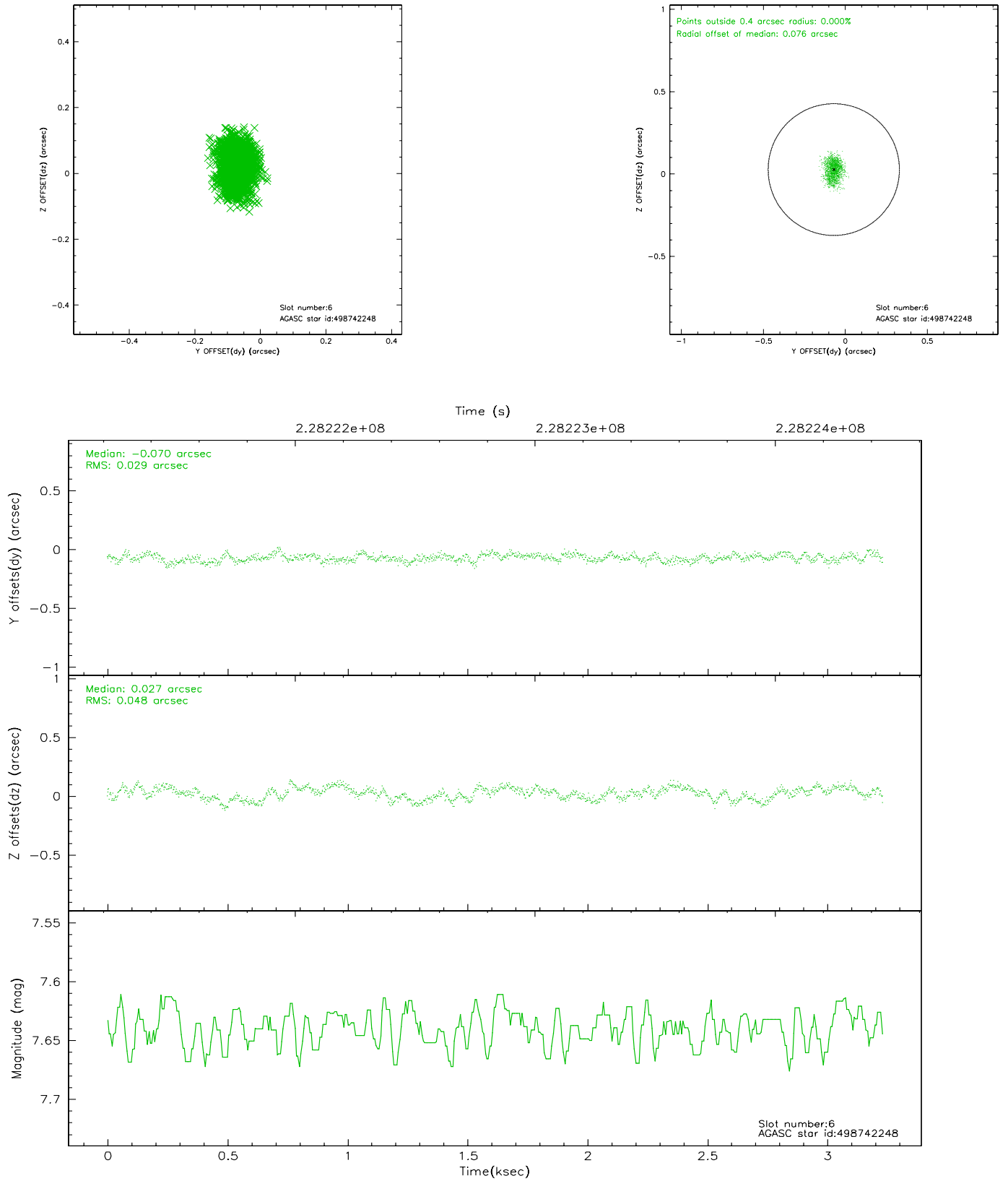
## 2.4.2 Slot 4



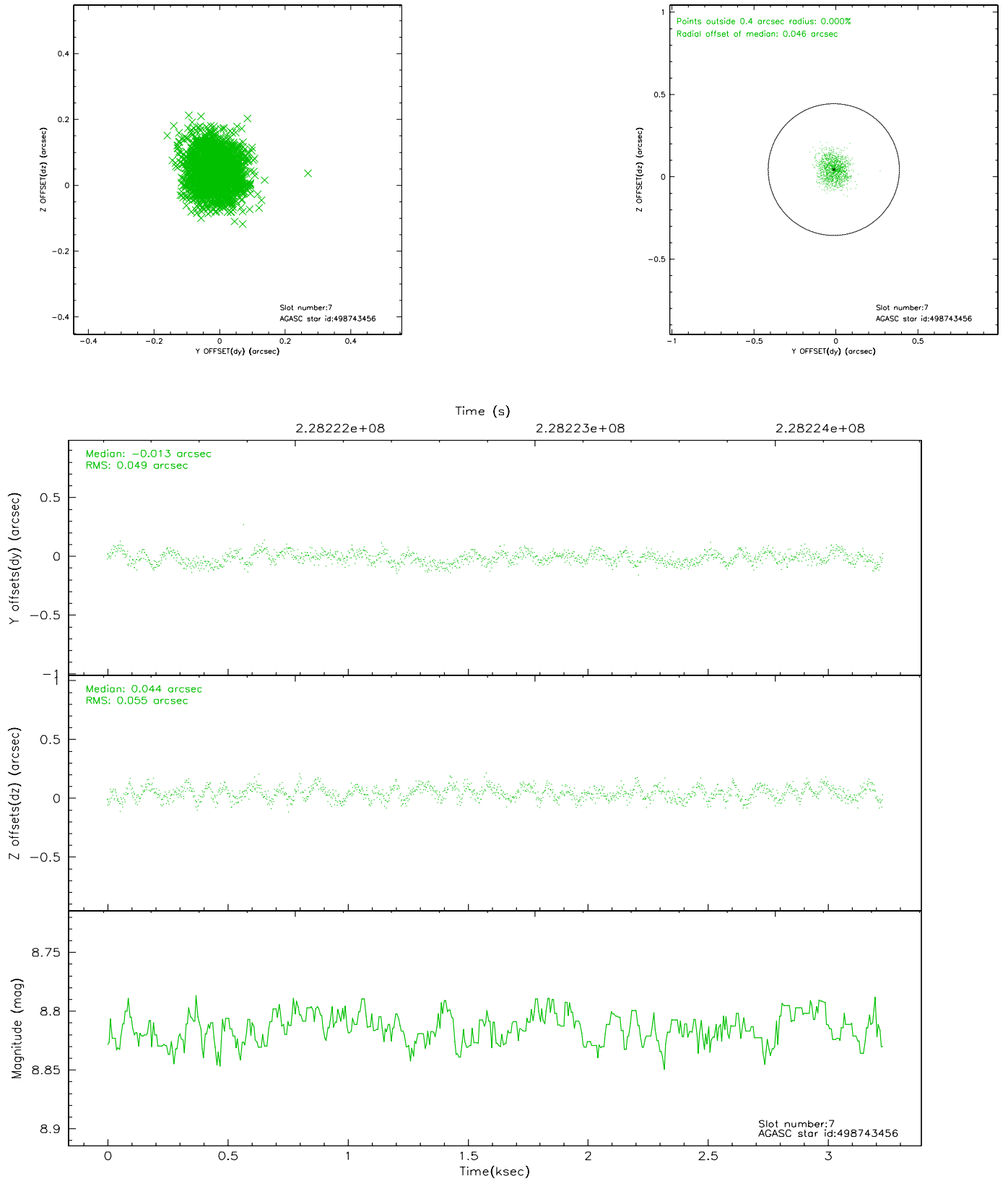
### 2.4.3 Slot 5



## 2.4.4 Slot 6

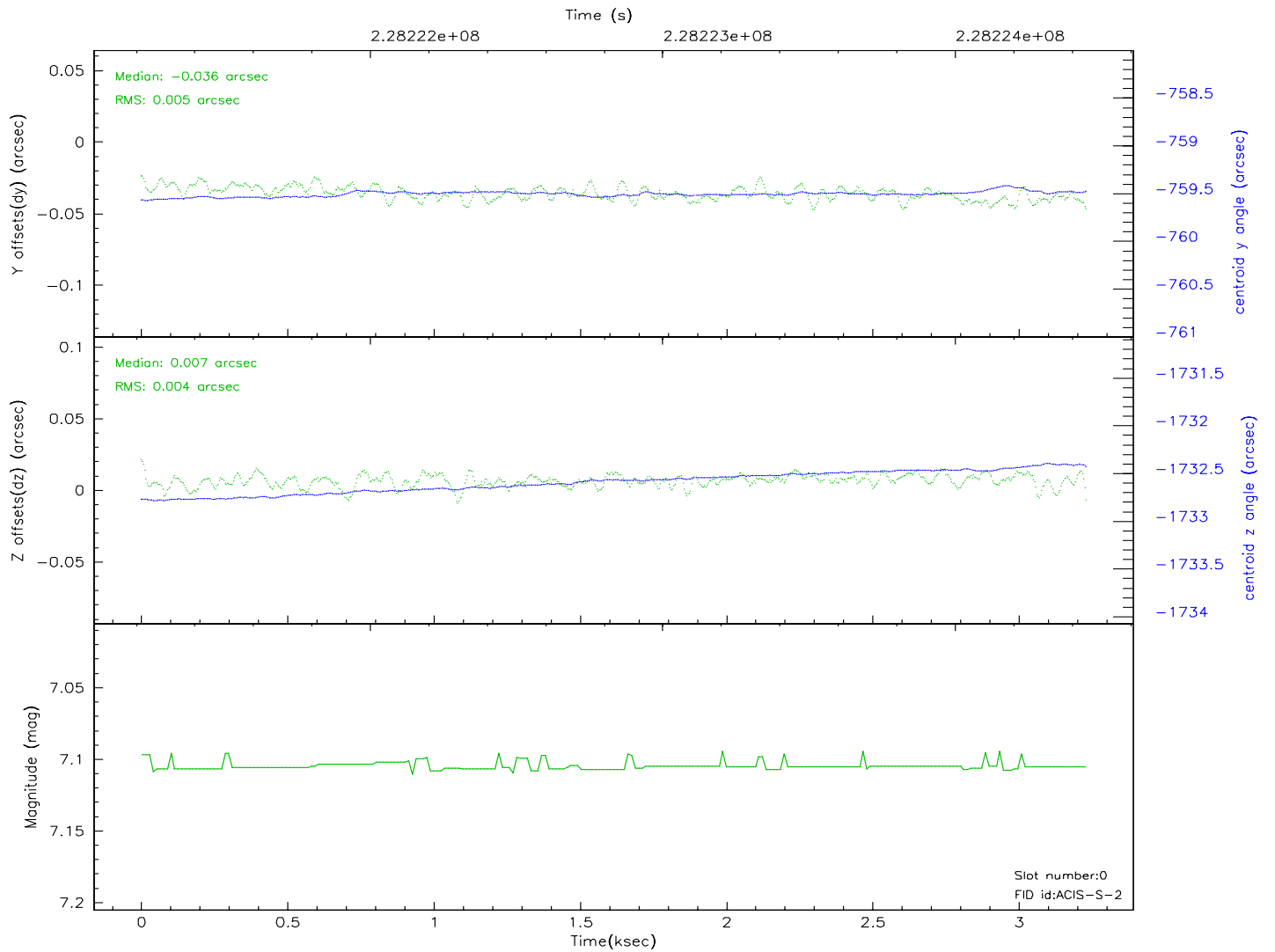
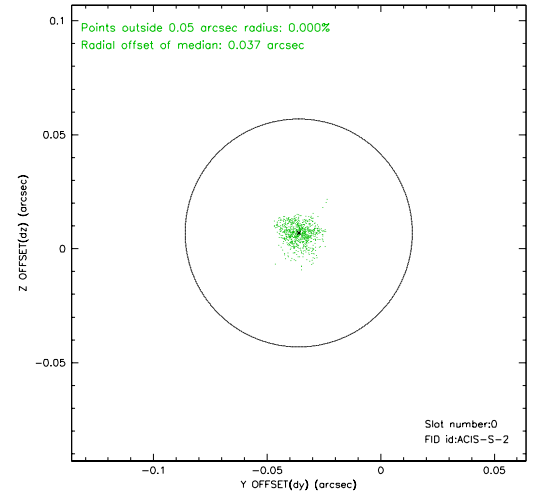
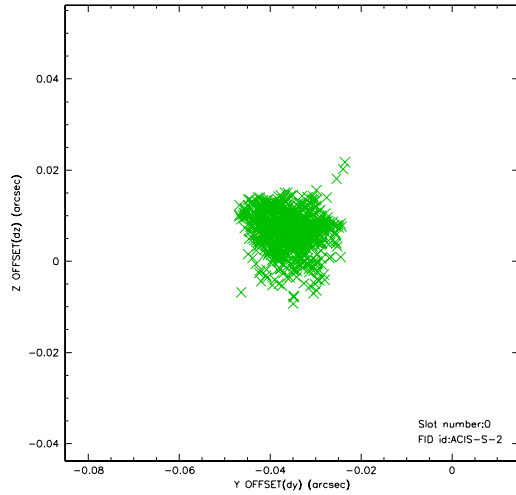


## 2.4.5 Slot 7

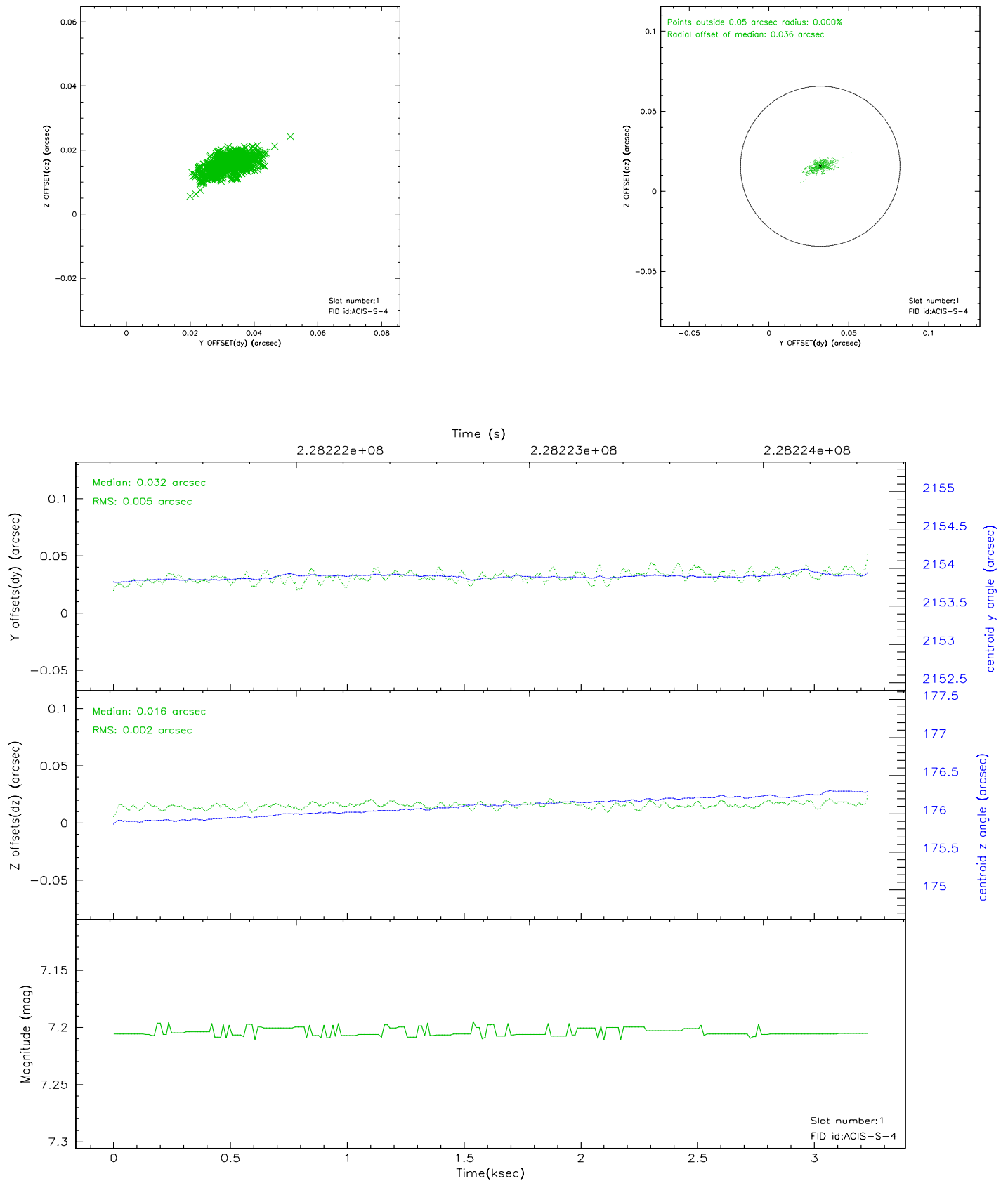


## 2.5 FID Slots

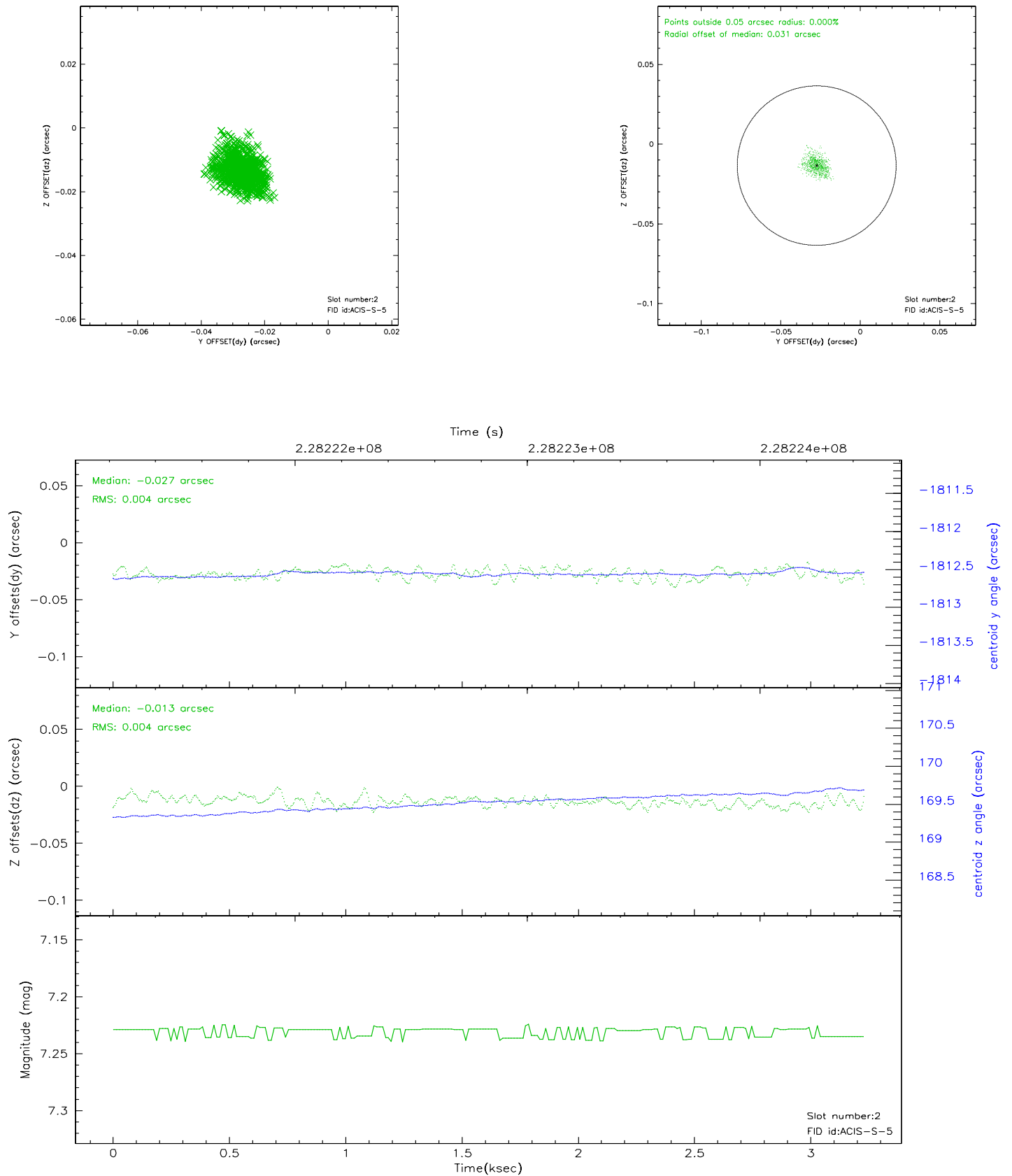
### 2.5.1 Slot 0



## 2.5.2 Slot 1



### 2.5.3 Slot 2





### 3 Point Sources

13.93 arcmin



## A Summary

### A.1 Status

V&V Scientist	Beth Sundheim
V&V Date (YYYY-MM-DD)	2006.03.17
V&V Edition	1
V&V Disposition and Status	OK
V&V Charge Time	1.974399

### A.2 Comments