

V&V Reference Report

L2 ASCDS Version : 8.4.5

Observation 56887 - L2 Version 2
Chandra X-Ray Center

L2 Processing Date : Jun 12 2012

Contents

| | | |
|----------|-------------------------------|----------|
| 1 | Front | 2 |
| 2 | OBI | 3 |
| 2.1 | OBI | 3 |
| 2.1.1 | Images | 3 |
| 2.1.2 | Bias | 3 |
| 2.1.3 | Parameters | 4 |
| 2.1.4 | Events | 4 |
| 2.2 | Compared Parameters | 5 |
| 2.3 | Star Slots | 6 |
| 2.4 | FID Slots | 6 |
| A | Summary | 7 |
| A.1 | Status | 7 |
| A.2 | Comments | 7 |

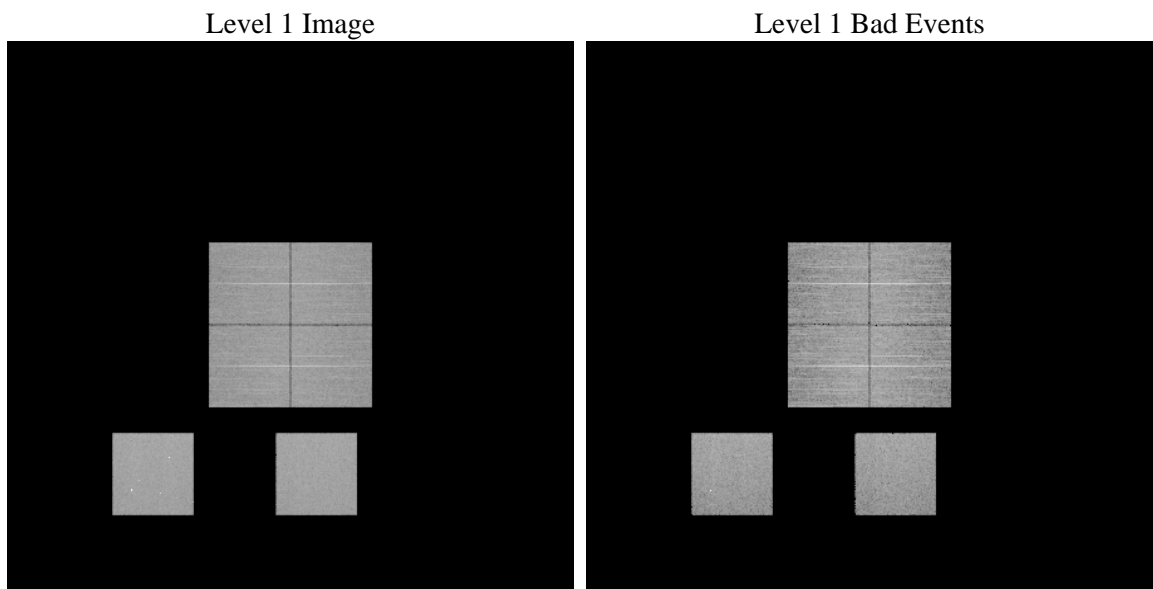
1 Front

| | | |
|----------|---|---|
| seq_num | | Sequence number |
| obs_id | 56887 | Observation id |
| title | ACIS-012357 diagnostics | Proposal title |
| observer | CHANDRA engineering request/realtime commanding | Principal investig |
| object | | Source name |
| dtcycle | 0 | |
| cycle | P | events from which exps? Prim/Second/Both |
| ra_targ | 0.0 | Observer's specified target RA [deg] |
| dec_targ | 0.0 | Observer's specified target Dec [deg] |
| ra_nom | 310.05601603568 | Nominal RA [deg] |
| dec_nom | -59.993516405769 | Nominal Dec [deg] |
| roll_nom | 340.13575695335 | Nominal Roll [deg] |
| revision | 2 | Processing version of data |
| ontime | 8447.9999685884 | Sum of GTIs [s] |
| livetime | 8341.0263062112 | Livetime [s] |
| ontime0 | 8447.9999685884 | Sum of GTIs [s] |
| ontime1 | 8447.9999685884 | Sum of GTIs [s] |
| ontime2 | 8447.9999685884 | Sum of GTIs [s] |
| ontime3 | 8447.9999685884 | Sum of GTIs [s] |
| ontime5 | 8447.9999685884 | Sum of GTIs [s] |
| ontime7 | 8447.9999685884 | Sum of GTIs [s] |
| l2events | 513598 | Number of level 2 events |

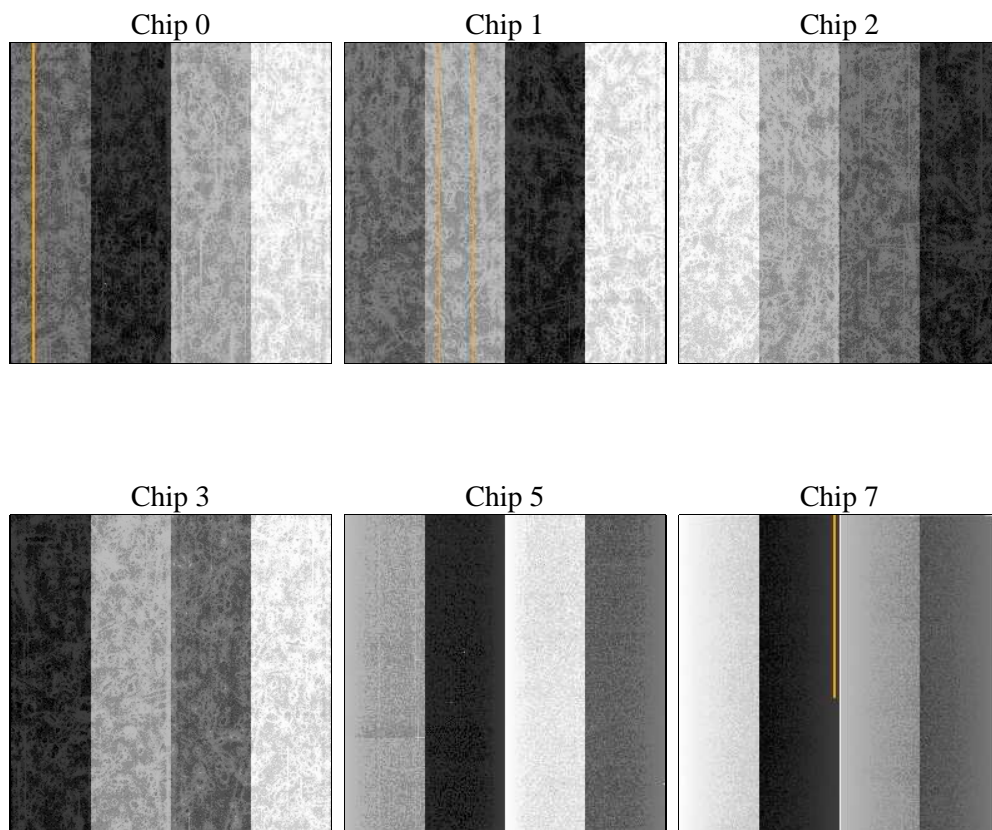
2 OBI

2.1 OBI

2.1.1 Images



2.1.2 Bias



2.1.3 Parameters

| | | | | | |
|----------|---------------------|--------------------------------|----------------|-----------------|---|
| obi_num | 0 | Obi number | sched_exp_time | 0.0 | [s] Scheduled observation exposure time |
| ascdsver | 8.4.5 | Processing system revision | ontime | 8447.9999685884 | Sum of GTIs [s] |
| caldsver | 4.4.10 | | ontime0 | 8447.9999685884 | Sum of GTIs [s] |
| date | 2012-06-12T02:29:41 | Date and time of file creation | ontime1 | 8447.9999685884 | Sum of GTIs [s] |
| revision | 2 | Processing version of data | ontime2 | 8447.9999685884 | Sum of GTIs [s] |
| | | | ontime3 | 8447.9999685884 | Sum of GTIs [s] |
| | | | ontime5 | 8447.9999685884 | Sum of GTIs [s] |
| | | | ontime7 | 8447.9999685884 | Sum of GTIs [s] |
| | | | l1events | 1000785 | Number of level 1 events |

2.1.4 Events

| | ccd 0 | ccd 1 | ccd 2 | ccd 3 | ccd 5 | ccd 7 | | ccd 0 | ccd 1 | ccd 2 | ccd 3 | ccd 5 | ccd 7 |
|-----------------|--------|--------|--------|--------|--------|--------|----------------|-------|-------|-------|-------|-------|-------|
| level 1 events | 150079 | 152377 | 157454 | 156067 | 195555 | 189253 | grade 0 events | 40949 | 40068 | 41520 | 42130 | 17098 | 20978 |
| rejected events | 73435 | 75671 | 81135 | 78728 | 77217 | 73471 | | 27% | 26% | 26% | 26% | 8% | 11% |
| rejected % | 48% | 49% | 51% | 50% | 39% | 38% | grade 1 events | 301 | 249 | 330 | 357 | 244 | 171 |
| | | | | | | | | 0% | 0% | 0% | 0% | 0% | 0% |
| | | | | | | | grade 2 events | 13810 | 14505 | 13081 | 13623 | 42369 | 25125 |
| | | | | | | | | 9% | 9% | 8% | 8% | 21% | 13% |
| | | | | | | | grade 3 events | 5089 | 5252 | 5123 | 5152 | 5303 | 10622 |
| | | | | | | | | 3% | 3% | 3% | 3% | 2% | 5% |
| | | | | | | | grade 4 events | 5180 | 5044 | 5249 | 5274 | 5196 | 10717 |
| | | | | | | | | 3% | 3% | 3% | 3% | 2% | 5% |
| | | | | | | | grade 5 events | 4172 | 4435 | 3869 | 4738 | 10338 | 11680 |
| | | | | | | | | 2% | 2% | 2% | 3% | 5% | 6% |
| | | | | | | | grade 6 events | 11635 | 11862 | 11386 | 11191 | 48422 | 48401 |
| | | | | | | | | 7% | 7% | 7% | 7% | 24% | 25% |
| | | | | | | | grade 7 events | 68943 | 70962 | 76896 | 73602 | 66585 | 61559 |
| | | | | | | | | 45% | 46% | 48% | 47% | 34% | 32% |

2.2 Compared Parameters

| Parameter | Planned | Actual | Parameter | Planned | Actual |
|-----------------------------------|---------------------|----------------------|---------------------------------------|-----------|---------|
| Instrument | ACIS | ACIS | Obspar format version number | 7 | 7 |
| Detector | ACIS-012357 | ACIS-012357 | Obspar file type | PREDICTED | ACTUAL |
| Grating | NONE | NONE | Obspar update status | NONE | UPDATED |
| Data mode | FAINT | FAINT | Number of optional ACIS chips dropped | 0 | 0 |
| Observation mode | SECONDARY | SECONDARY | On-chip summing requested | N | N |
| [deg] Pointing RA | 0 | 310.0560160356752 | Subarray requested | NONE | NONE |
| [deg] Pointing Dec | 0 | -59.99351640576946 | Alternating exposures requested | N | N |
| [deg] Pointing Roll | 0.0 | 340.1357569533528 | [s] Primary exposure time | 3.2 | 3.2 |
| [mm] SIM focus pos | -1.429586 | -0.7809083437167272 | | | |
| [mm] SIM defocus | 0.1037507710433287 | 0.7524282956875696 | | | |
| [mm] SIM translation stage pos | 250.455976 | 250.466033080201 | | | |
| [mm] SIM translation stage offset | 0 | -0.01005468664627074 | | | |
| [s] Observation start time (MET) | 366723146.896828 | 366723145.87184 | | | |
| Observation start date | 2009-08-15T11:32:27 | 2009-08-15T11:32:25 | | | |
| [s] Observation end time (MET) | 366733327.197337 | 366733326.17235 | | | |
| Observation end date | 2009-08-15T14:22:07 | 2009-08-15T14:22:06 | | | |
| Read mode | TIMED | TIMED | | | |

2.3 Star Slots

2.4 FID Slots

A Summary

A.1 Status

| | |
|----------------------------|-----------------|
| V&V Scientist | Jen Lauer |
| V&V Date (YYYY-MM-DD) | 2012.06.14 |
| V&V Edition | 1 |
| V&V Disposition and Status | OK |
| V&V Charge Time | 8.4479999685884 |

A.2 Comments