

# V&V Reference Report

## L2 ASCDS Version : 8.4.5

Observation 56207 - L2 Version 2  
Chandra X-Ray Center

L2 Processing Date : Jun 28 2012

## Contents

<b>1</b>	<b>Front</b>	<b>2</b>
<b>2</b>	<b>OBI</b>	<b>3</b>
2.1	OBI . . . . .	3
2.1.1	Images . . . . .	3
2.1.2	Bias . . . . .	3
2.1.3	Parameters . . . . .	4
2.1.4	Events . . . . .	4
2.2	Compared Parameters . . . . .	5
2.3	Star Slots . . . . .	6
2.4	FID Slots . . . . .	6
<b>A</b>	<b>Summary</b>	<b>7</b>
A.1	Status . . . . .	7
A.2	Comments . . . . .	7

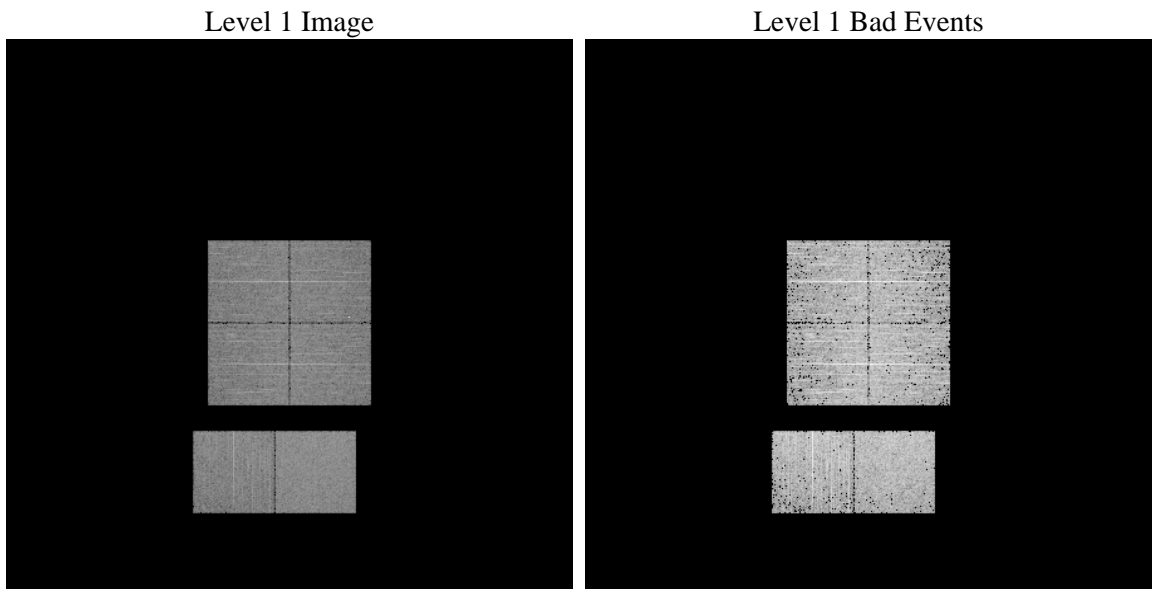
# 1 Front

seq_num	&#160	Sequence number
obs_id	56207	Observation id
title	ACIS-012367 diagnostics	Proposal title
observer	CHANDRA engineering request/realtime commanding	Principal investig
object	&#160	Source name
dtcycle	0	&#160
cycle	P	events from which exps? Prim/Second/Both
ra_targ	0.0	Observer's specified target RA [deg]
dec_targ	0.0	Observer's specified target Dec [deg]
ra_nom	280.97598881527	Nominal RA [deg]
dec_nom	-18.980216536992	Nominal Dec [deg]
roll_nom	103.31105734557	Nominal Roll [deg]
revision	2	Processing version of data
ontime	3279.9999878407	Sum of GTIs [s]
livetime	3238.4666530157	Livetime [s]
ontime0	3279.9999878407	Sum of GTIs [s]
ontime1	3279.9999878407	Sum of GTIs [s]
ontime2	3279.9999878407	Sum of GTIs [s]
ontime3	3279.9999878407	Sum of GTIs [s]
ontime6	3279.9999878407	Sum of GTIs [s]
ontime7	3279.9999878407	Sum of GTIs [s]
l2events	153755	Number of level 2 events

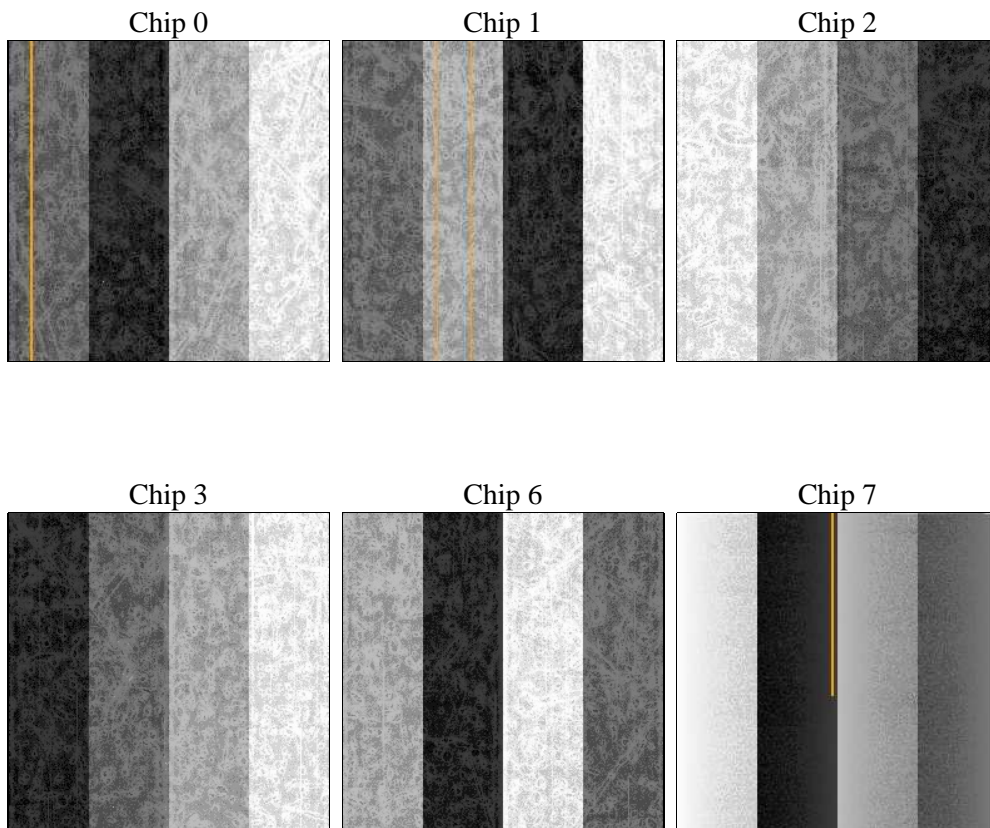
## 2 OBI

### 2.1 OBI

#### 2.1.1 Images



#### 2.1.2 Bias



### 2.1.3 Parameters

obi_num	1	Obi number	sched_exp_time	0.0	[s] Scheduled observation exposure time
ascdsver	8.4.5	Processing system revision	ontime	3279.9999878407	Sum of GTIs [s]
caldsver	4.5.0	&#160	ontime0	3279.9999878407	Sum of GTIs [s]
date	2012-06-28T05:23:36	Date and time of file creation	ontime1	3279.9999878407	Sum of GTIs [s]
revision	2	Processing version of data	ontime2	3279.9999878407	Sum of GTIs [s]
			ontime3	3279.9999878407	Sum of GTIs [s]
			ontime6	3279.9999878407	Sum of GTIs [s]
			ontime7	3279.9999878407	Sum of GTIs [s]
			l1events	316832	Number of level 1 events

### 2.1.4 Events

	ccd 0	ccd 1	ccd 2	ccd 3	ccd 6	ccd 7		ccd 0	ccd 1	ccd 2	ccd 3	ccd 6	ccd 7
level 1 events	49240	49102	50511	51747	51976	64256	grade 0 events	13169	13762	13155	13345	13334	6866
rejected events	24517	23332	26113	27047	26402	25717		26%	28%	26%	25%	25%	10%
rejected %	49%	47%	51%	52%	50%	40%	grade 1 events	91	91	98	97	73	48
								0%	0%	0%	0%	0%	0%
							grade 2 events	4510	4852	4280	4309	4508	8352
								9%	9%	8%	8%	8%	12%
							grade 3 events	1703	1614	1720	1689	1766	3531
								3%	3%	3%	3%	3%	5%
							grade 4 events	1677	1713	1682	1670	1745	3524
								3%	3%	3%	3%	3%	5%
							grade 5 events	1504	1591	1453	1634	1703	4163
								3%	3%	2%	3%	3%	6%
							grade 6 events	3691	3859	3589	3705	4244	16300
								7%	7%	7%	7%	8%	25%
							grade 7 events	22895	21620	24534	25298	24603	21472
								46%	44%	48%	48%	47%	33%

## 2.2 Compared Parameters

Parameter	Planned	Actual	Parameter	Planned	Actual
Instrument	ACIS	ACIS	Obspar format version number	7	7
Detector	ACIS-012367	ACIS-012367	Obspar file type	PREDICTED	ACTUAL
Grating	NONE	NONE	Obspar update status	NONE	UPDATED
Data mode	FAINT	FAINT	Number of optional ACIS chips dropped	0	0
Observation mode	SECONDARY	SECONDARY	On-chip summing requested	N	N
[deg] Pointing RA	0	280.975988815267	Subarray requested	NONE	NONE
[deg] Pointing Dec	0	-18.98021653699169	Alternating exposures requested	N	N
[deg] Pointing Roll	0.0	103.3110573455693	[s] Primary exposure time	3.2	3.2
[mm] SIM focus pos	-1.429586	-1.428180813131781			
[mm] SIM defocus	0.1037507710433287	0.1051558262725154			
[mm] SIM translation stage pos	250.455976	250.466033080201			
[mm] SIM translation stage offset	0	-0.01005468664627074			
[s] Observation start time (MET)	392279337.888996	392279336.86398			
Observation start date	2010-06-07T06:28:58	2010-06-07T06:28:56			
[s] Observation end time (MET)	392284268.139248	392284267.11423			
Observation end date	2010-06-07T07:51:08	2010-06-07T07:51:07			
Read mode	TIMED	TIMED			

## 2.3 Star Slots

## 2.4 FID Slots

## A Summary

### A.1 Status

V&V Scientist	Jen Lauer
V&V Date (YYYY-MM-DD)	2012.07.03
V&V Edition	1
V&V Disposition and Status	OK
V&V Charge Time	3.2799999878407

### A.2 Comments