

V&V Reference Report

L2 ASCDS Version : 8.5.1

Observation 5607 - L2 Version 3
Chandra X-Ray Center

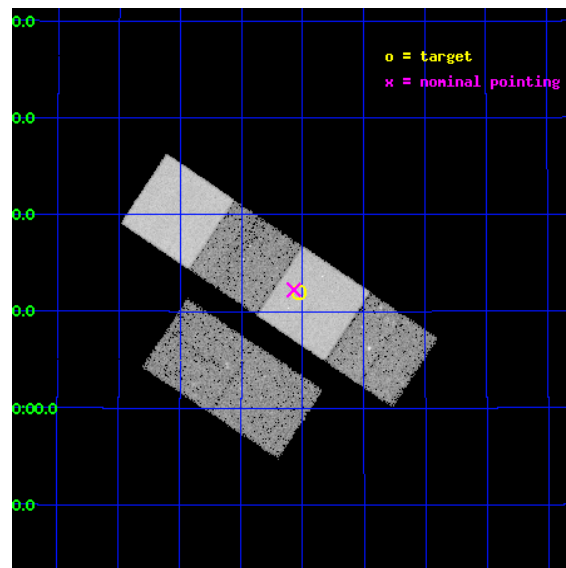
L2 Processing Date : Dec 15 2012

Contents

1	Front	2
2	OBI	3
2.1	OBI	3
2.1.1	Images	3
2.1.2	Bias	3
2.1.3	Parameters	4
2.1.4	Events	4
2.2	Compared Parameters	5
2.3	Aspect	6
2.4	Star Slots	9
2.4.1	Slot 3	9
2.4.2	Slot 4	10
2.4.3	Slot 5	11
2.4.4	Slot 6	12
2.4.5	Slot 7	13
2.5	FID Slots	14
2.5.1	Slot 0	14
2.5.2	Slot 1	15
2.5.3	Slot 2	16
A	Summary	17
A.1	Status	17
A.2	Comments	17

1 Front

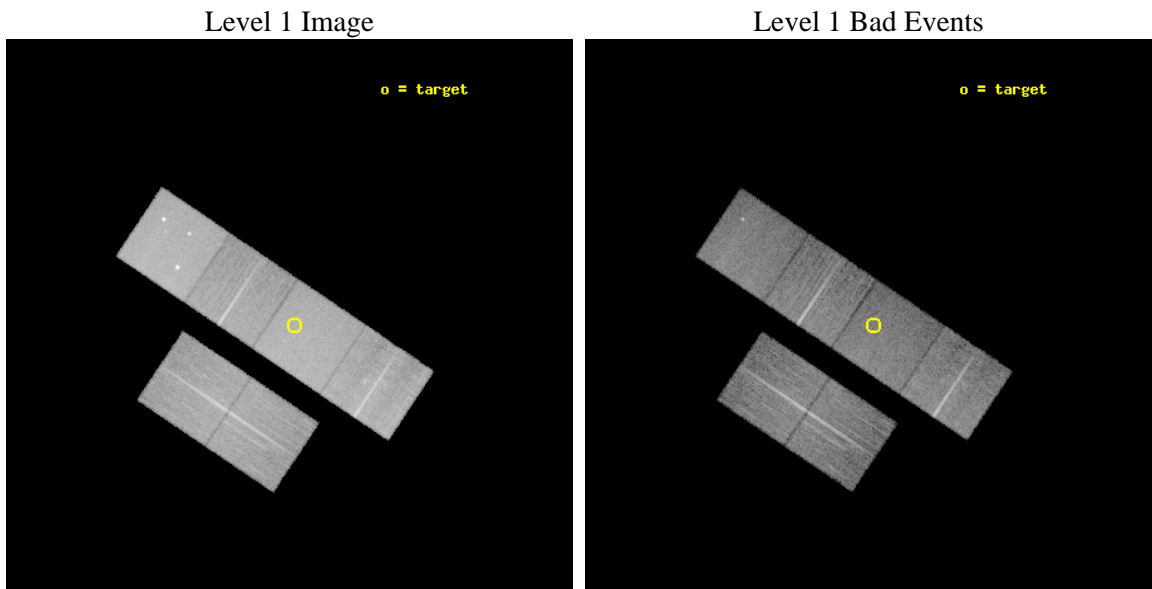
seq_num	701030	Sequence number
obs_id	5607	Observation id
title	A Chandra Survey of the Most Distant Quasars: X-raying the First Massive Black Holes	Proposal title
observer	Prof. William Brandt	Principal investigator
object	SDSS J1623+3112	Source name
dtcycle	0	
cycle	P	events from which exps? Prim/Second/Both
ra_targ	245.8825	Observer's specified target RA [deg]
dec_targ	31.200139	Observer's specified target Dec [deg]
ra_nom	245.89284738779	Nominal RA [deg]
dec_nom	31.204021562224	Nominal Dec [deg]
roll_nom	33.784263405478	Nominal Roll [deg]
revision	3	Processing version of data
ontime	17433.599935055	Sum of GTIs [s]
livetime	17212.845195424	Livetime [s]
ontime2	17433.599935055	Sum of GTIs [s]
ontime3	17433.599935055	Sum of GTIs [s]
ontime5	17433.599935055	Sum of GTIs [s]
ontime6	17433.599935055	Sum of GTIs [s]
ontime7	17433.599935055	Sum of GTIs [s]
ontime8	17433.599935055	Sum of GTIs [s]
l2events	207907	Number of level 2 events



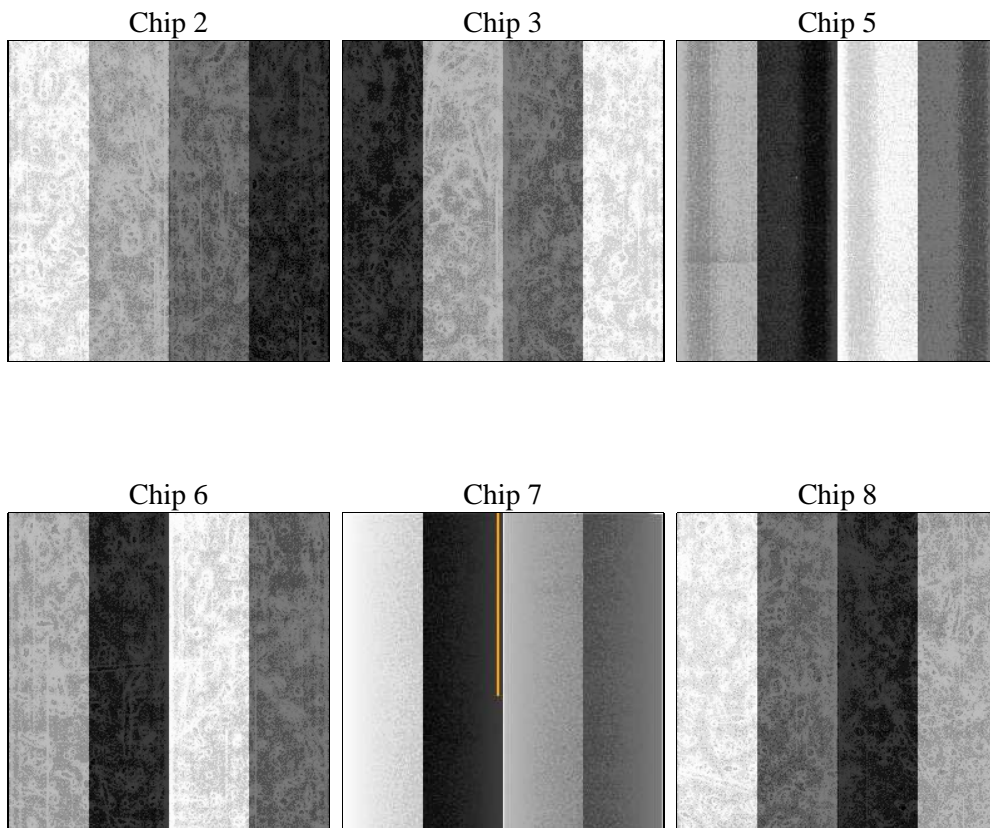
2 OBI

2.1 OBI

2.1.1 Images



2.1.2 Bias



2.1.3 Parameters

obi_num	0	Obi number	sched_exp_time	17300.025000	[s] Scheduled observation exposure time
ascdsver	8.5.1	Processing system revision	ontime	17433.599935055	Sum of GTIs [s]
caldsver	4.5.5	 	ontime2	17433.599935055	Sum of GTIs [s]
date	2012-12-15T05:45:57	Date and time of file creation	ontime3	17433.599935055	Sum of GTIs [s]
revision	3	Processing version of data	ontime5	17433.599935055	Sum of GTIs [s]
			ontime6	17433.599935055	Sum of GTIs [s]
			ontime7	17433.599935055	Sum of GTIs [s]
			ontime8	17433.599935055	Sum of GTIs [s]
			l1events	950899	Number of level 1 events

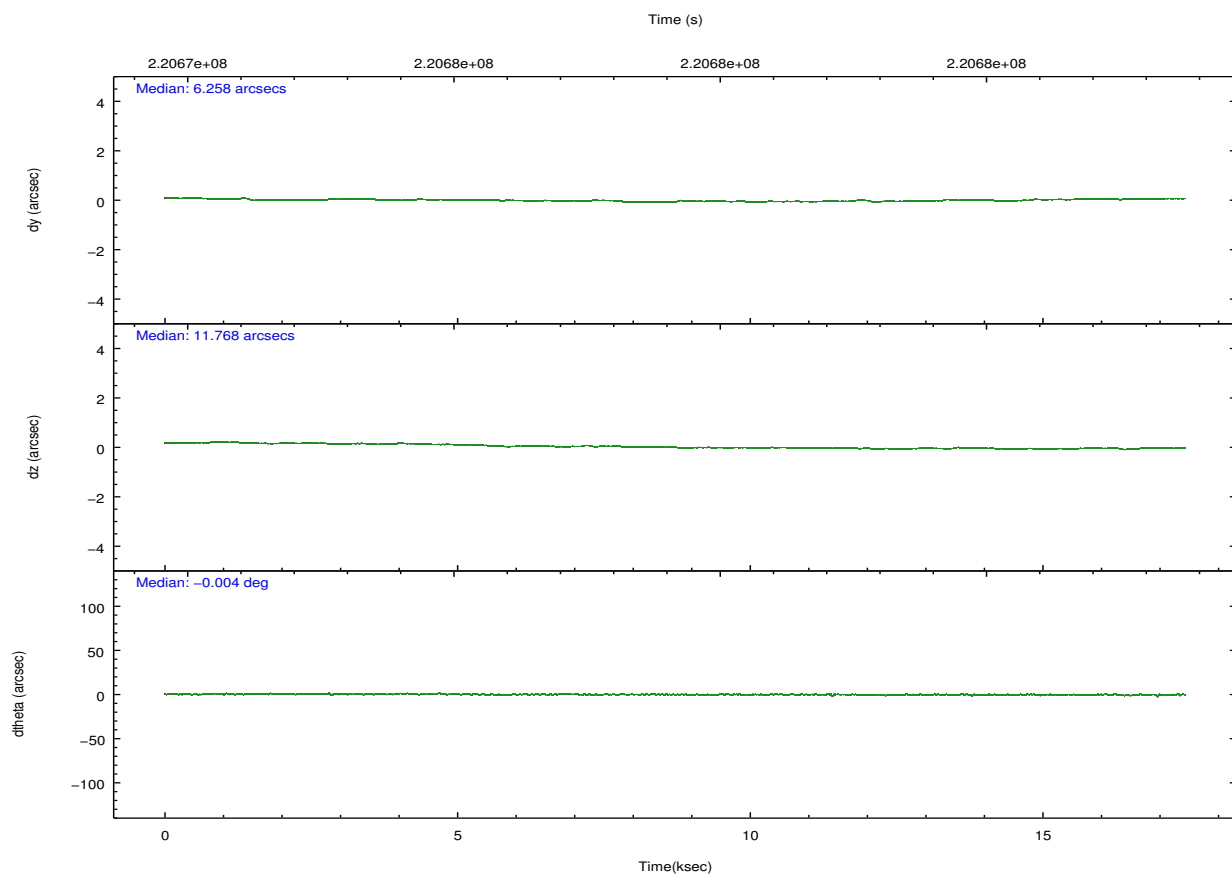
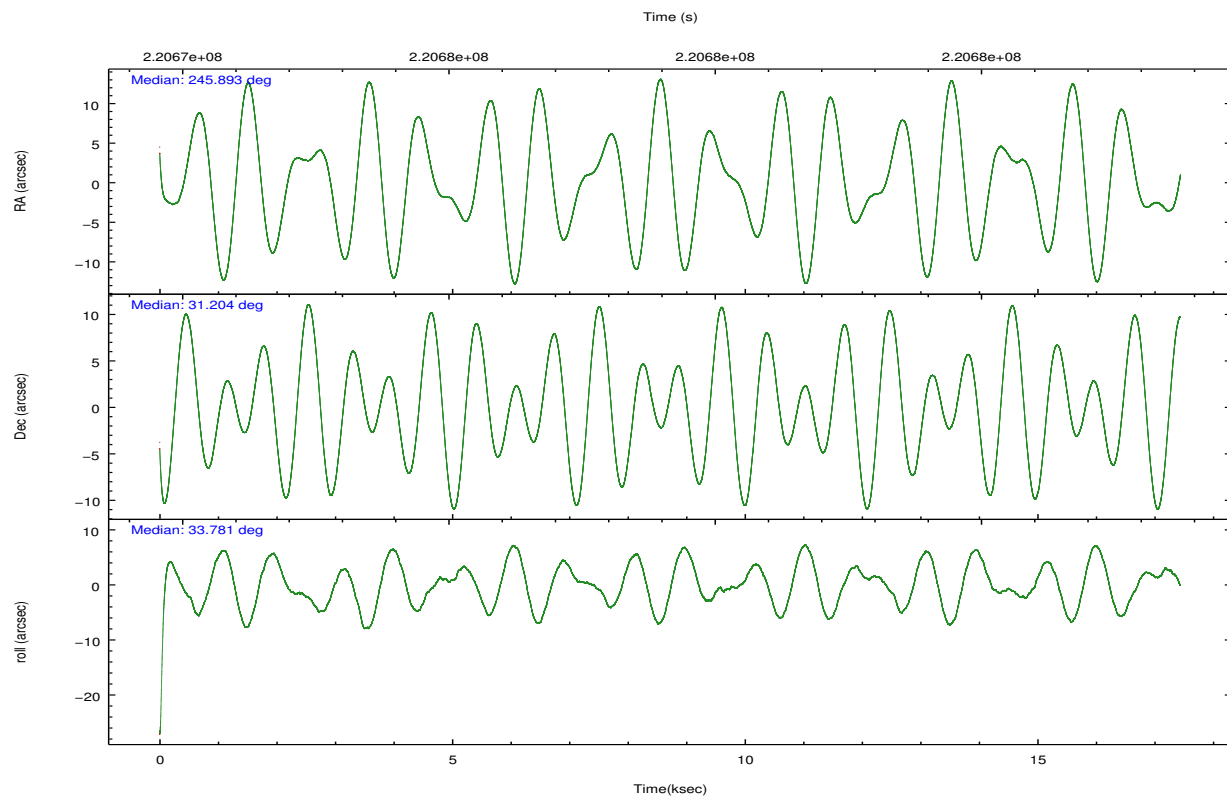
2.1.4 Events

	ccd 2	ccd 3	ccd 5	ccd 6	ccd 7	ccd 8		ccd 2	ccd 3	ccd 5	ccd 6	ccd 7	ccd 8
level 1 events	137576	130674	203207	133993	178843	166606	grade 0 events	7571	6752	11157	6334	6761	12181
rejected events	121704	115754	112019	118494	107403	131377		5%	5%	5%	4%	3%	7%
rejected %	88%	88%	55%	88%	60%	78%	grade 1 events	85	100	254	74	175	99
								0%	0%	0%	0%	0%	0%
							grade 2 events	3301	3017	29158	3441	14826	7999
								2%	2%	14%	2%	8%	4%
							grade 3 events	1511	1499	3568	1537	6644	3810
								1%	1%	1%	1%	3%	2%
							grade 4 events	1456	1505	3426	1541	6531	3653
								1%	1%	1%	1%	3%	2%
							grade 5 events	5248	5925	14669	6169	17109	7992
								3%	4%	7%	4%	9%	4%
							grade 6 events	2681	2750	47505	3202	39375	9057
								1%	2%	23%	2%	22%	5%
							grade 7 events	115723	109126	93470	111695	87422	121815
								84%	83%	45%	83%	48%	73%

2.2 Compared Parameters

Parameter	Planned	Actual	Parameter	Planned	Actual
Instrument	ACIS	ACIS	Obspar format version number	7	7
Detector	ACIS-235678	ACIS-235678	Obspar file type	PREDICTED	ACTUAL
Grating	NONE	NONE	Obspar update status	NONE	UPDATED
Data mode	FAINT	FAINT	Number of optional ACIS chips dropped	0	0
Observation mode	POINTING	POINTING	On-chip summing requested	N	N
[deg] Pointing RA	245.879179	245.8928473877897	Subarray requested	NONE	NONE
[deg] Pointing Dec	31.179432	31.20402156222446	Alternating exposures requested	N	N
[deg] Pointing Roll	33.634733	33.78426340547774	[s] Primary exposure time	0.000000	3.2
[mm] SIM focus pos	-0.684267	-0.6828225247311905			
[mm] SIM defocus	0	0.001444936568705701			
[mm] SIM translation stage pos	-190.132523	-190.1425803651734			
[mm] SIM translation stage offset	0	0.01005778216563158			
[s] Observation start time (MET)	220670566.184000	220669187.12548			
Observation start date	2004-12-29T01:21:42	2004-12-29T00:59:47			
[s] Observation end time (MET)	220687866.184000	220688094.27634			
Observation end date	2004-12-29T06:10:02	2004-12-29T06:14:54			
Read mode	TIMED	TIMED			

2.3 Aspect

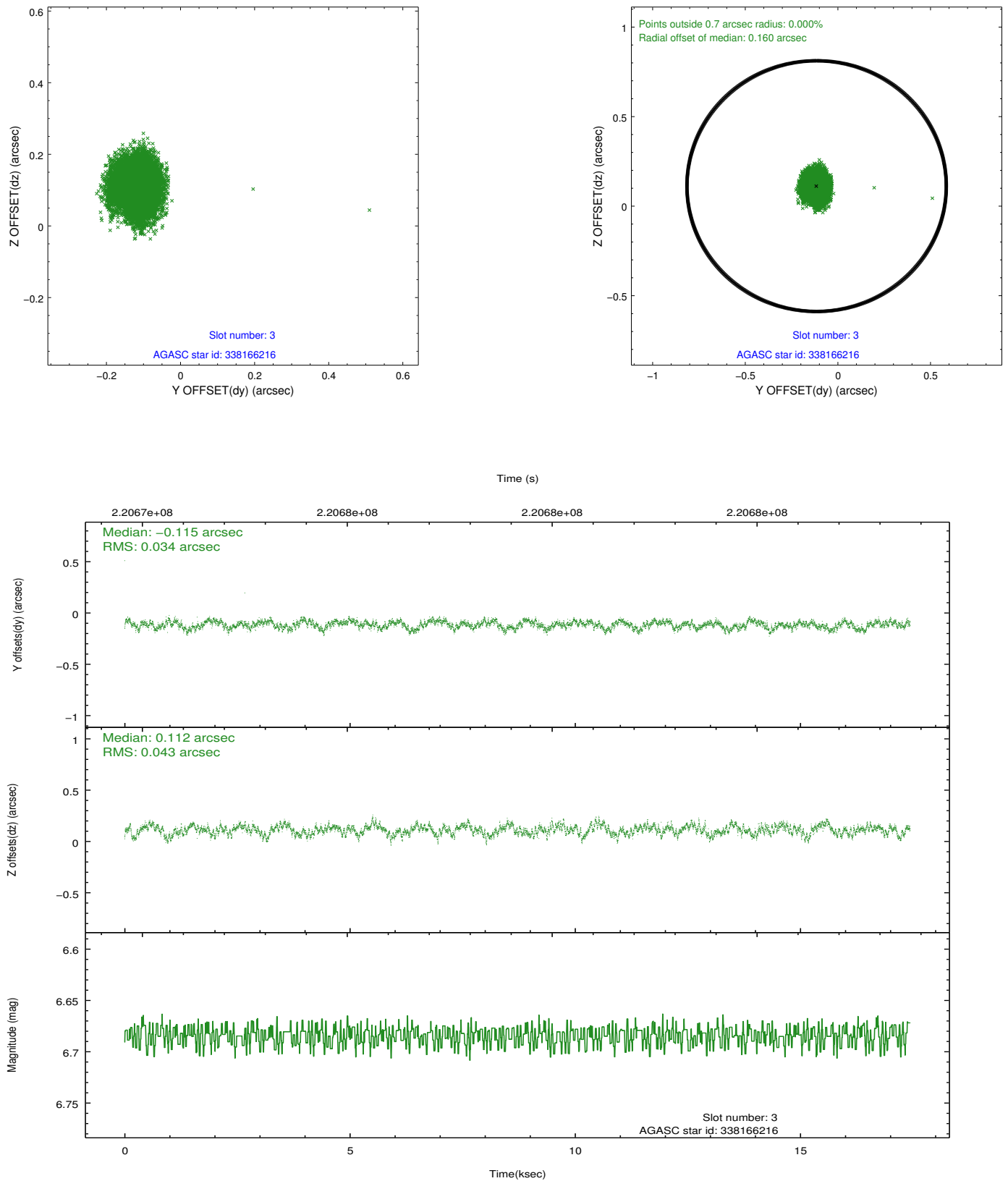


Slot Statistics

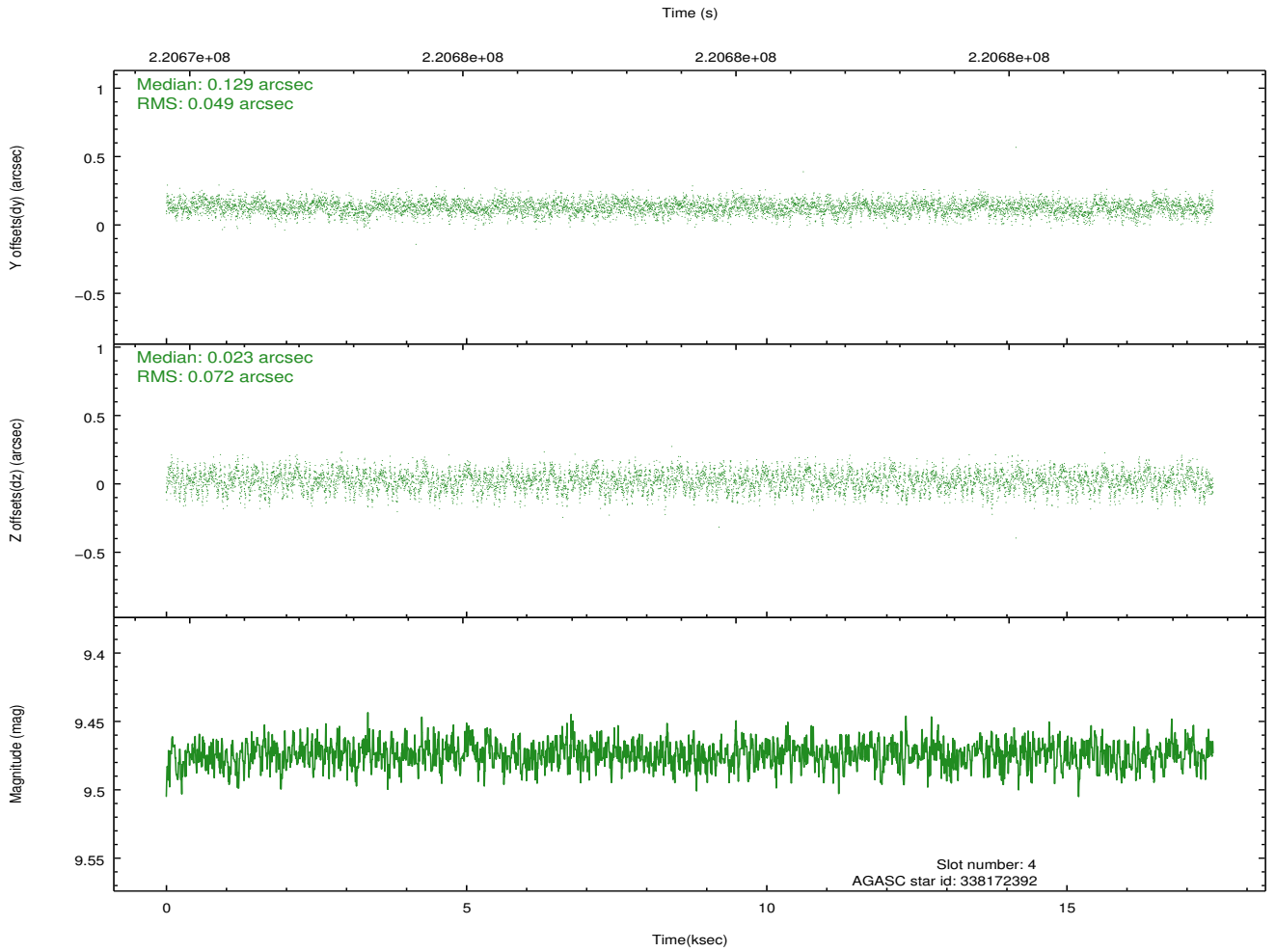
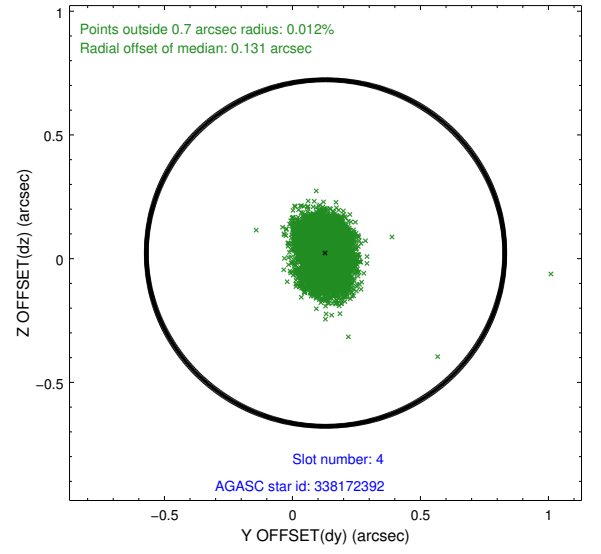
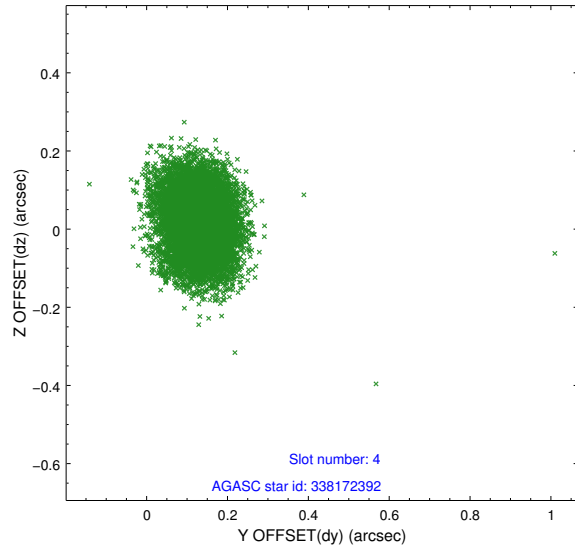
slot	status	id	mag	n_pts	med_dy	med_dz	dr1	dr2	ra	dec	mean_y	mean_z
0	FID	ACIS-S-1	7.19	4254	0.012	-0.090	0.007	0.012	0.000000	0.000000	937.02	-1728.79
1	FID	ACIS-S-4	7.20	4254	0.049	0.061	0.007	0.011	0.000000	0.000000	2154.63	175.26
2	FID	ACIS-S-5	7.23	4254	-0.088	0.042	0.006	0.010	0.000000	0.000000	-1811.61	169.17
3	GUIDE	338166216	6.68	8508	-0.115	0.112	0.059	0.091	245.771275	30.850165	-933.93	-801.93
4	GUIDE	338172392	9.47	8504	0.129	0.023	0.092	0.150	245.989373	30.613871	-843.26	-1884.25
5	GUIDE	338172952	9.71	8506	0.109	-0.109	0.122	0.209	245.483205	31.208640	-955.40	764.37
6	GUIDE	338310040	8.56	8505	-0.227	-0.083	0.063	0.102	246.276928	31.741209	2135.20	1011.39
7	GUIDE	338298824	9.62	8506	0.099	0.059	0.135	0.215	246.080341	32.075763	2299.09	2347.63

2.4 Star Slots

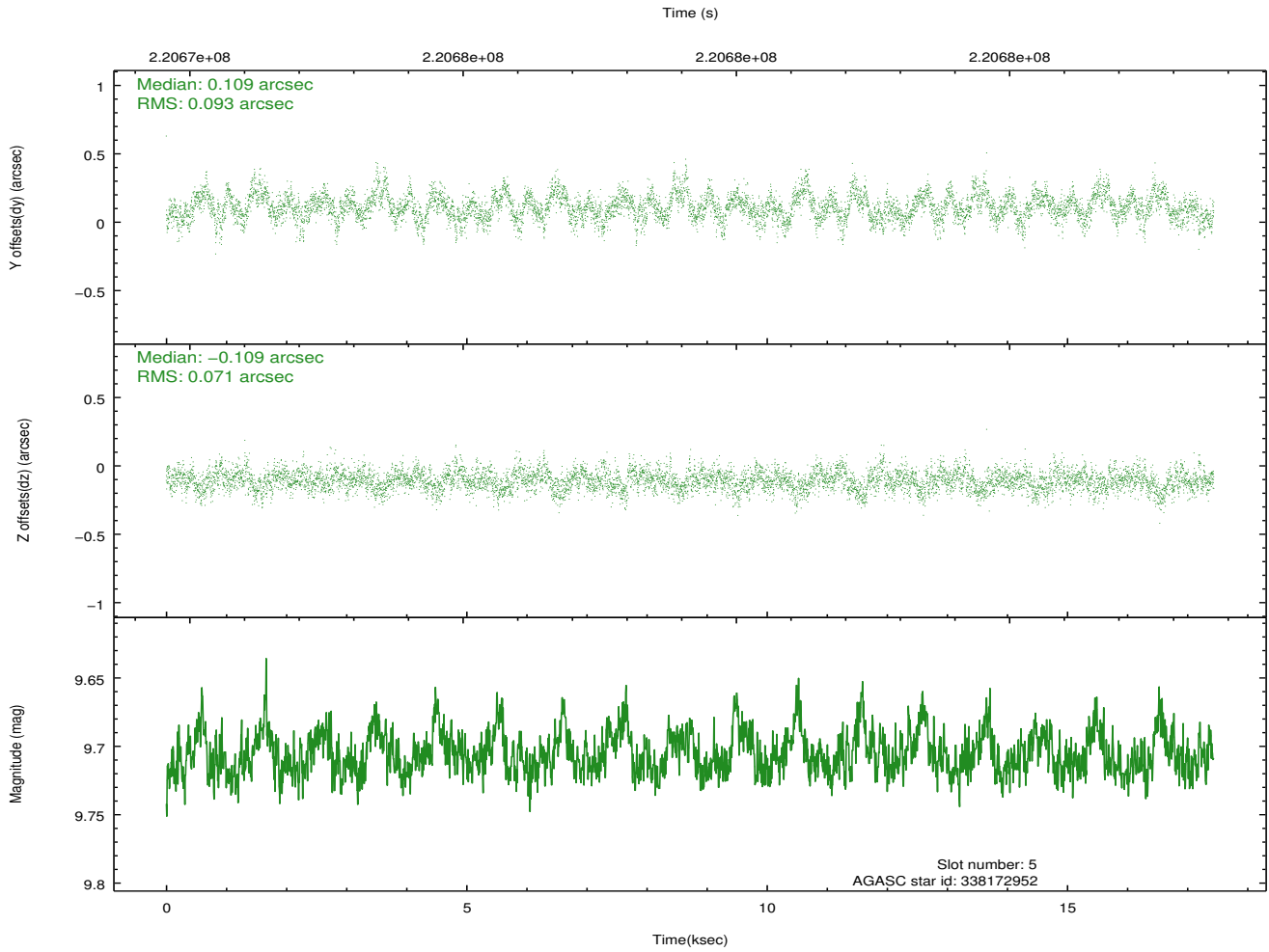
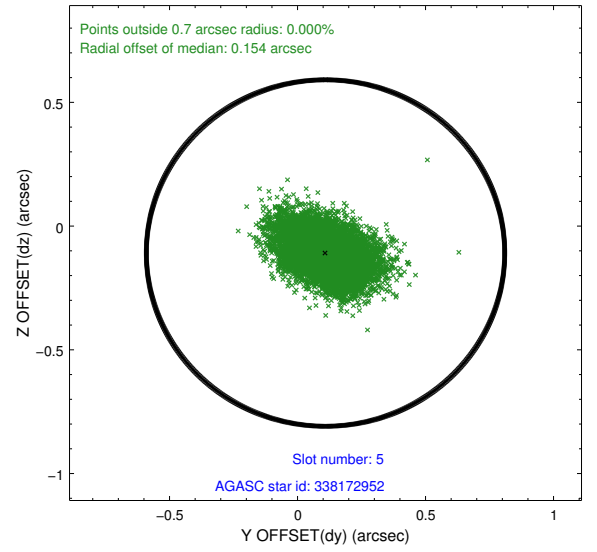
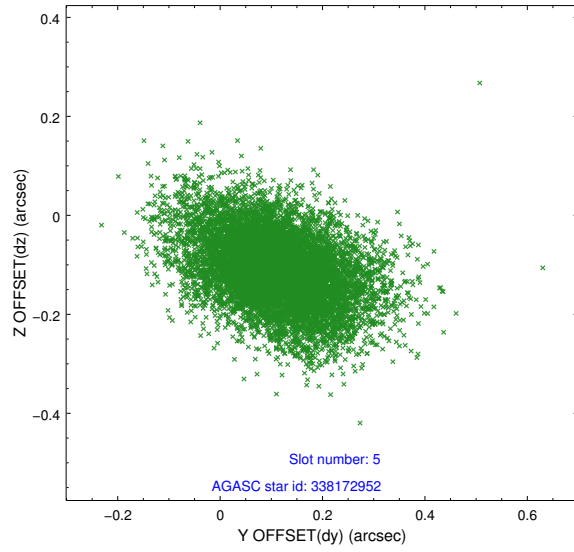
2.4.1 Slot 3



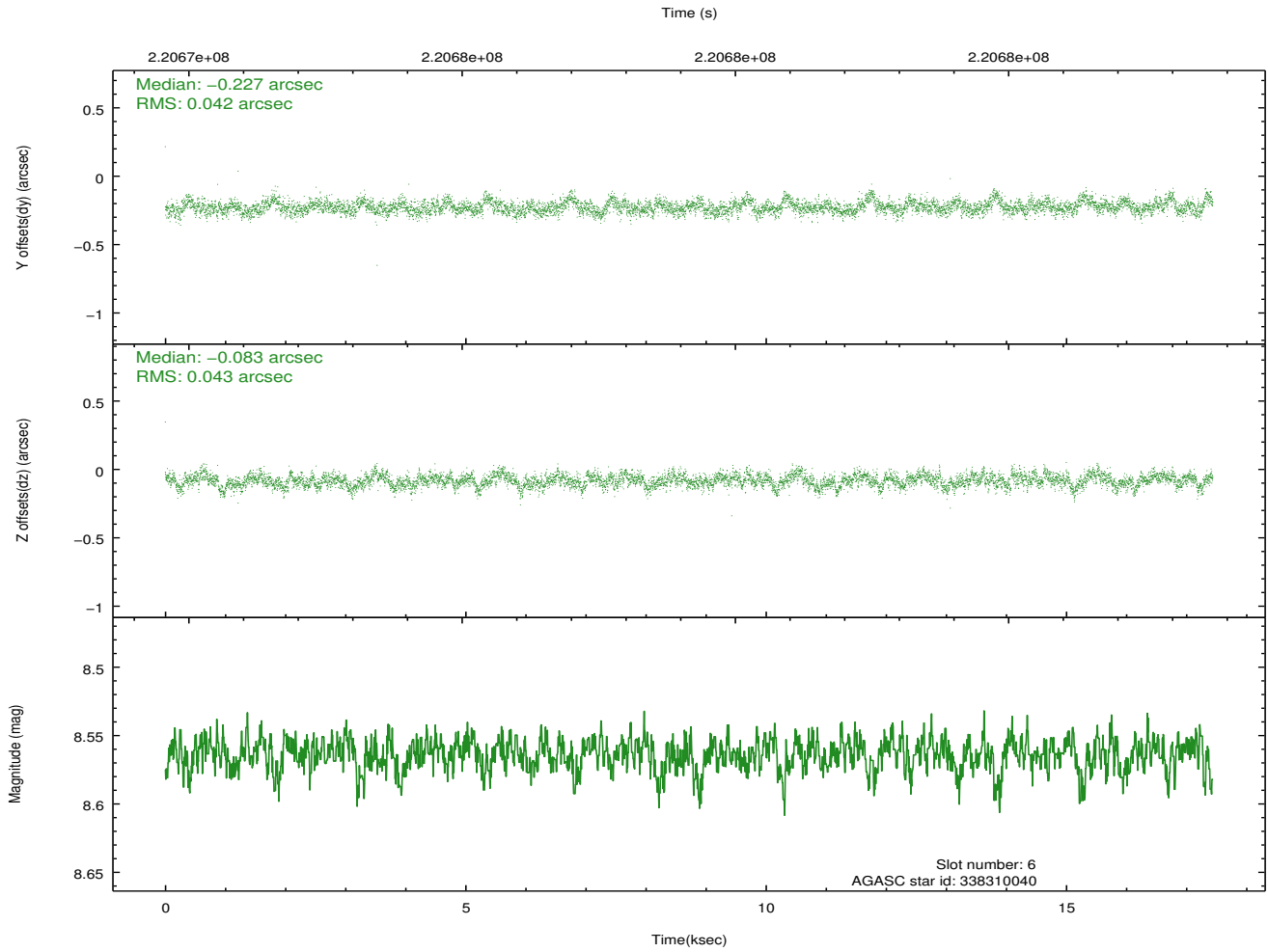
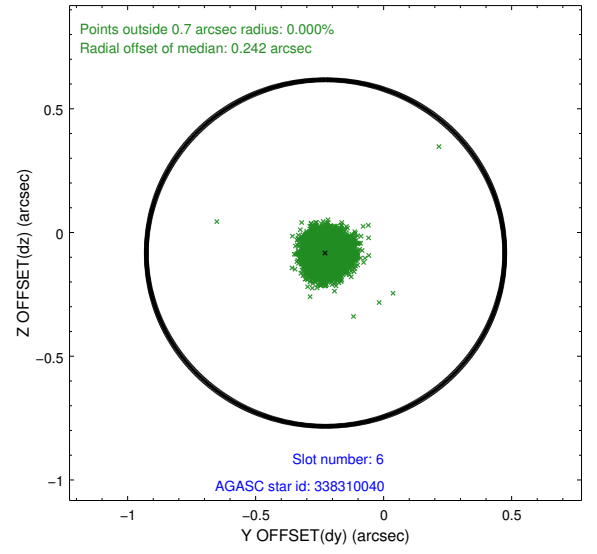
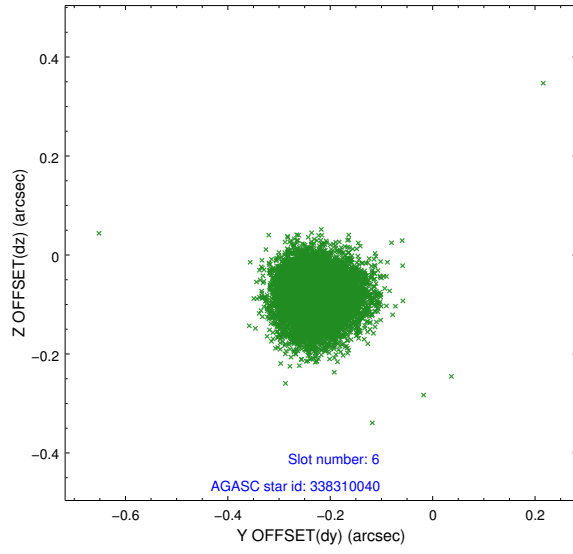
2.4.2 Slot 4



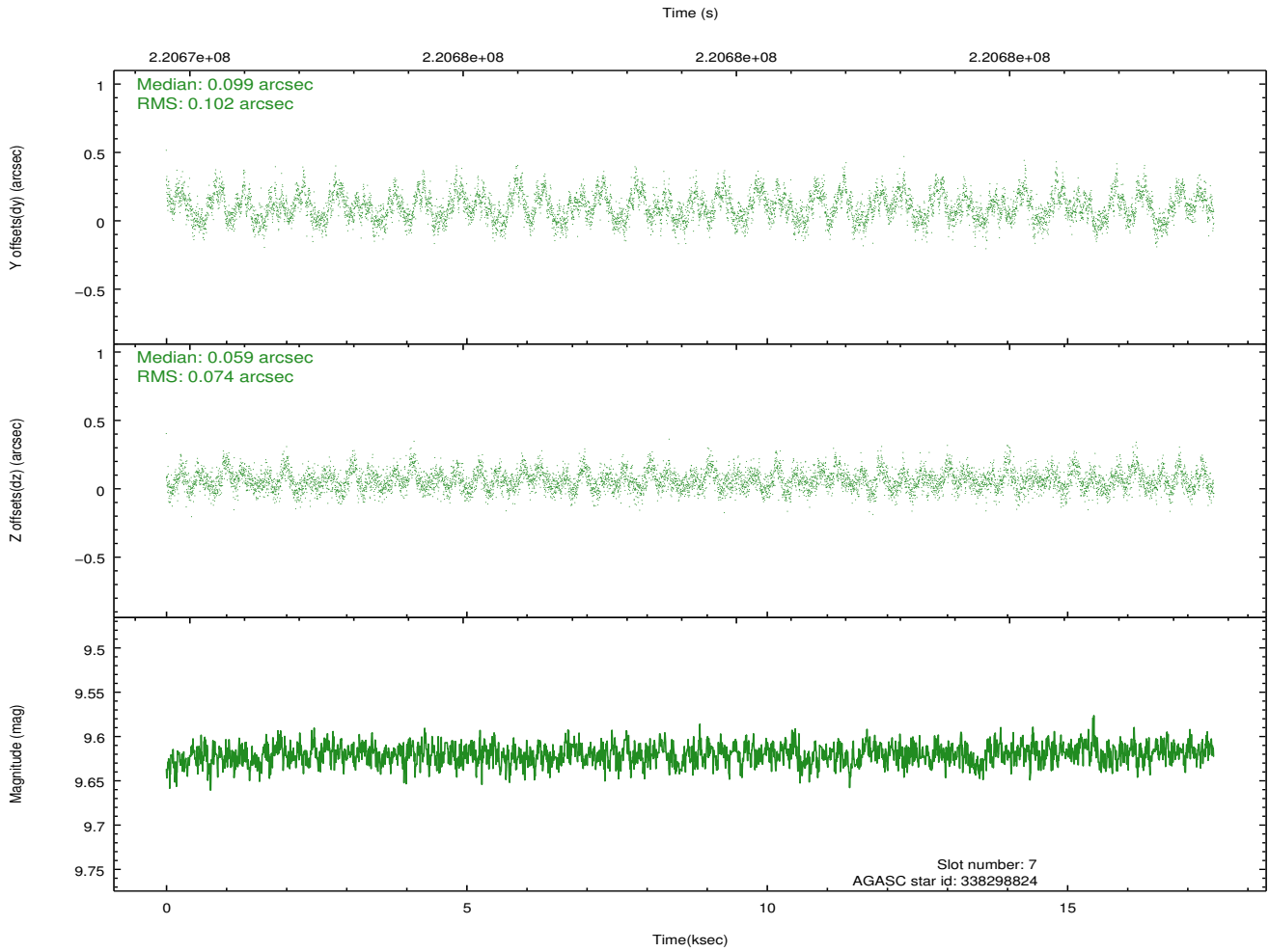
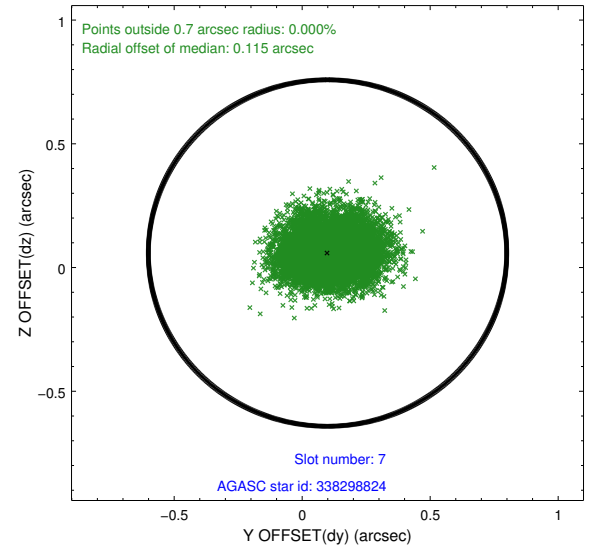
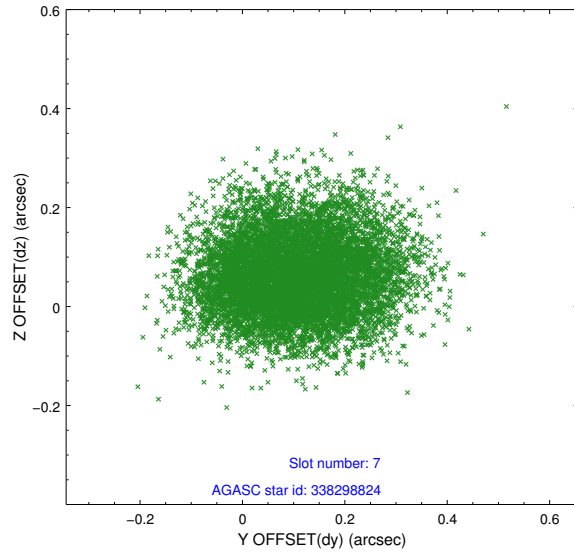
2.4.3 Slot 5



2.4.4 Slot 6

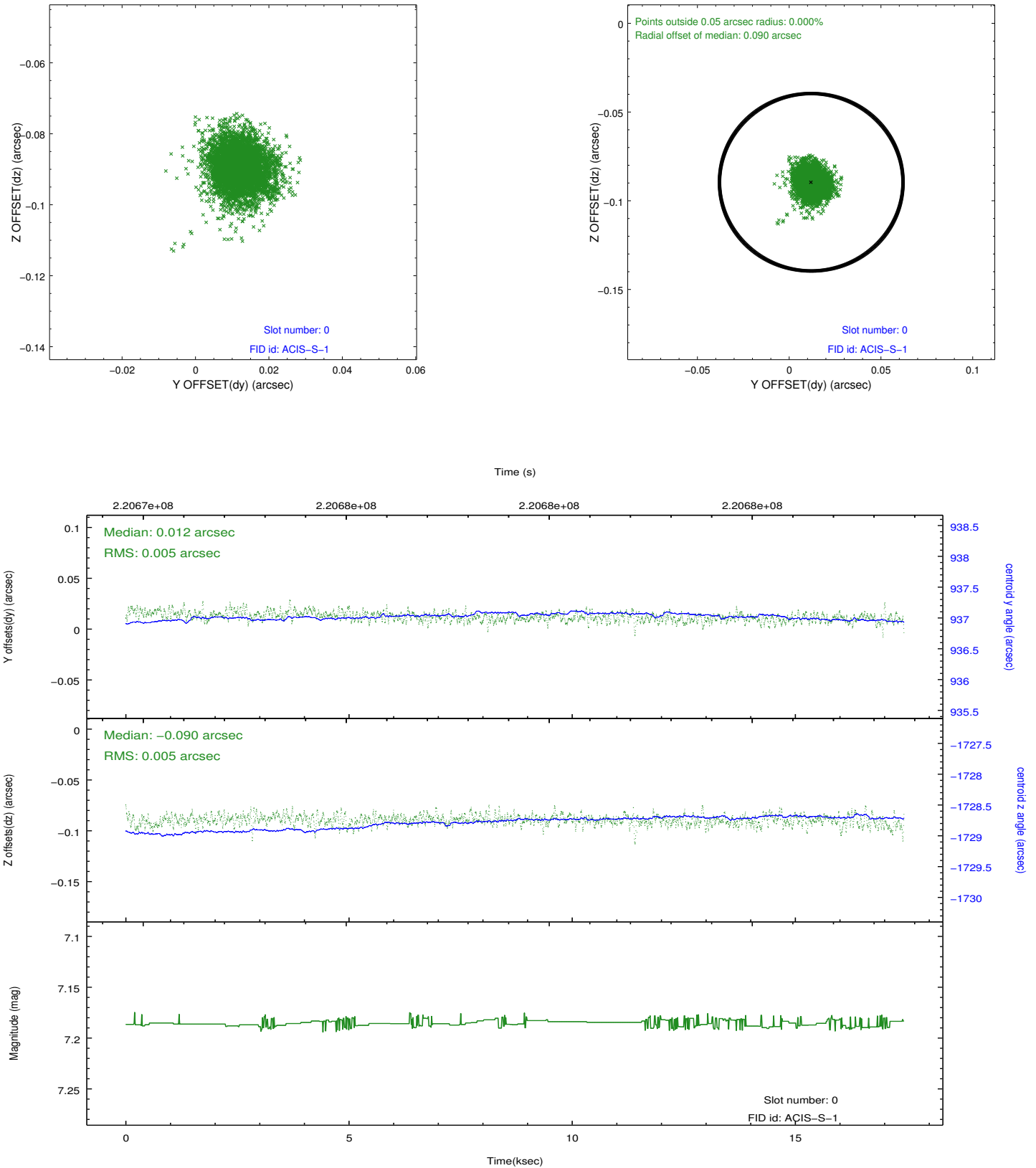


2.4.5 Slot 7

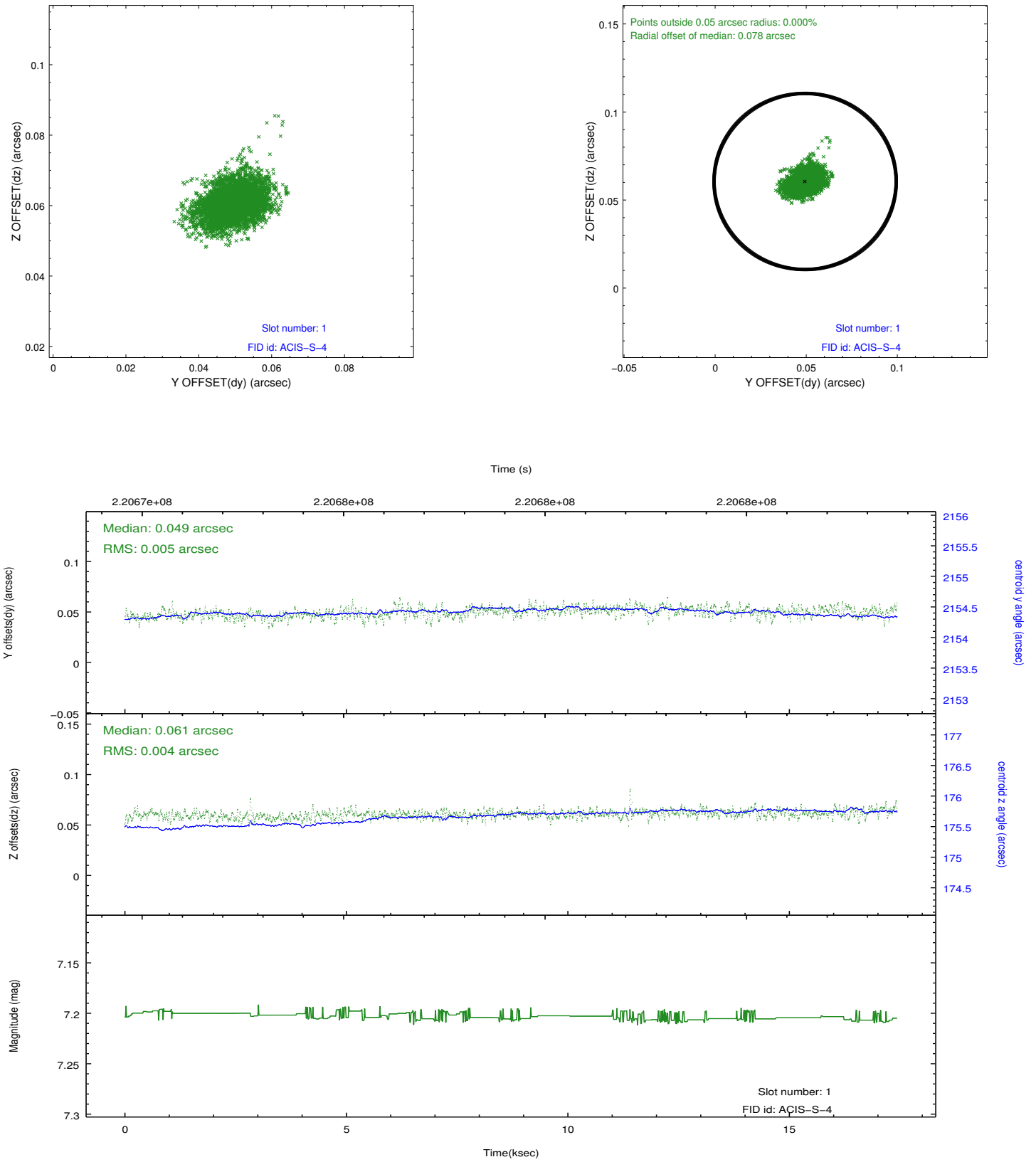


2.5 FID Slots

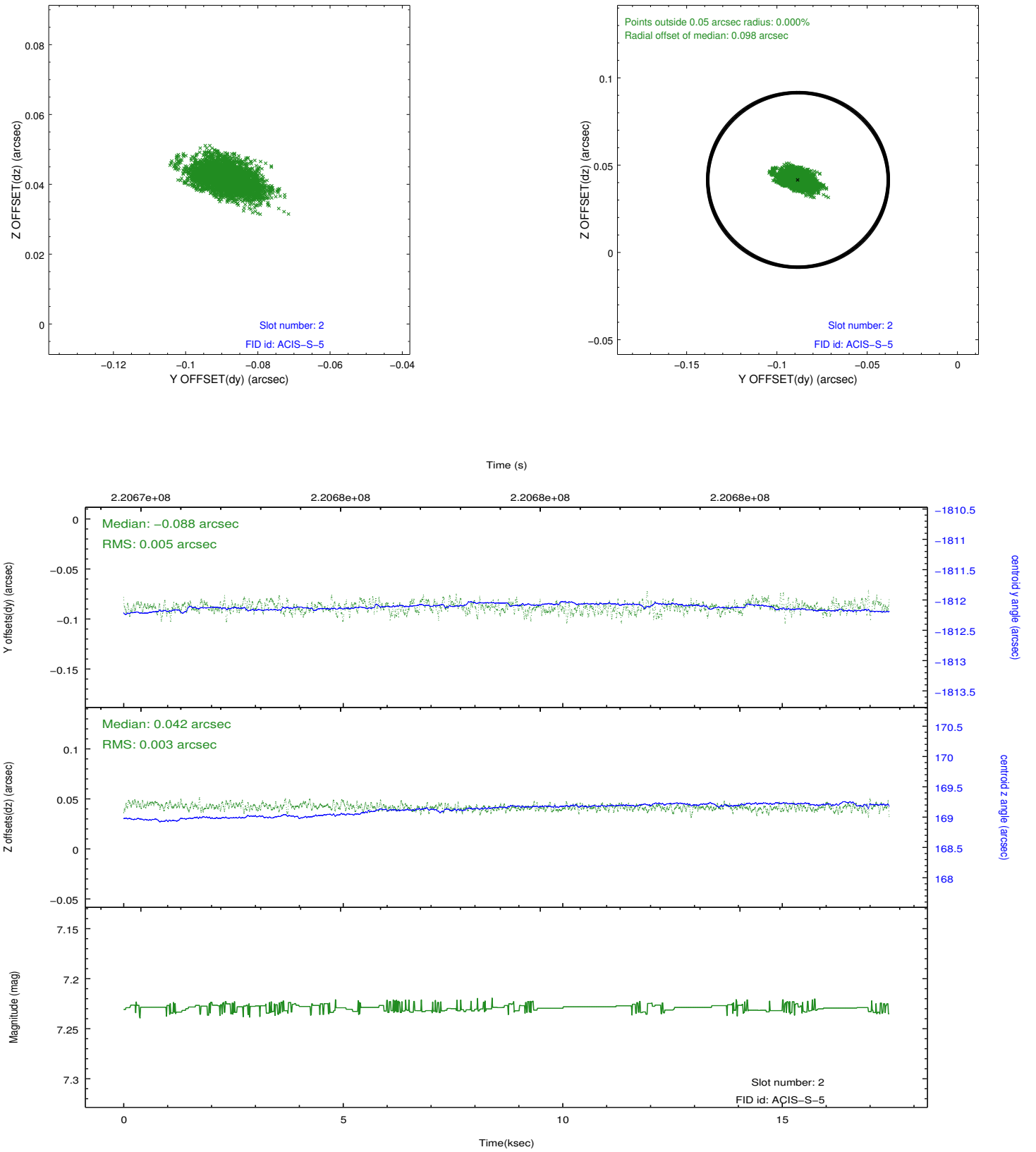
2.5.1 Slot 0



2.5.2 Slot 1



2.5.3 Slot 2



A Summary

A.1 Status

V&V Scientist	Jen Lauer
V&V Date (YYYY-MM-DD)	2013.01.08
V&V Edition	1
V&V Disposition and Status	OK
V&V Charge Time	17.43359

A.2 Comments