

V&V Reference Report

L2 ASCDS Version : 7.6.7.1

Observation 5597 - L2 Version 002
Chandra X-Ray Center

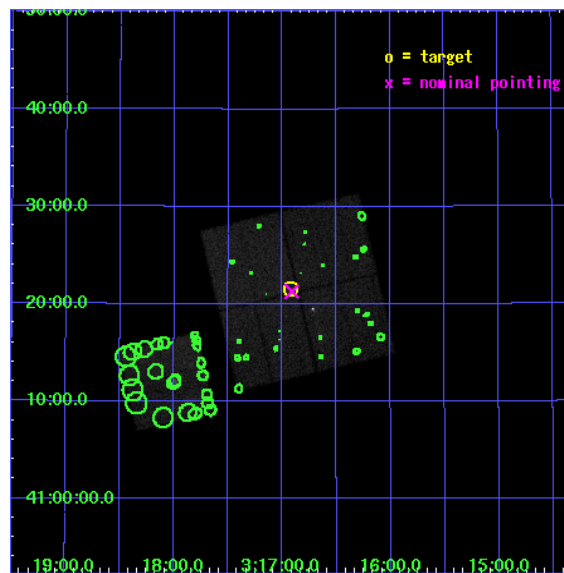
L2 Processing Date : Apr 7 2006

Contents

1	Front	2
2	OBI	3
2.1	OBI	3
2.1.1	Images	3
2.1.2	Bias	3
2.1.3	Parameters	4
2.1.4	Events	4
2.2	Compared Parameters	5
2.3	Aspect	6
2.4	Star Slots	9
2.4.1	Slot 3	9
2.4.2	Slot 4	10
2.4.3	Slot 5	11
2.4.4	Slot 6	12
2.4.5	Slot 7	13
2.5	FID Slots	14
2.5.1	Slot 0	14
2.5.2	Slot 1	15
2.5.3	Slot 2	16
3	Point Sources	17
A	Summary	18
A.1	Status	18
A.2	Comments	18

1 Front

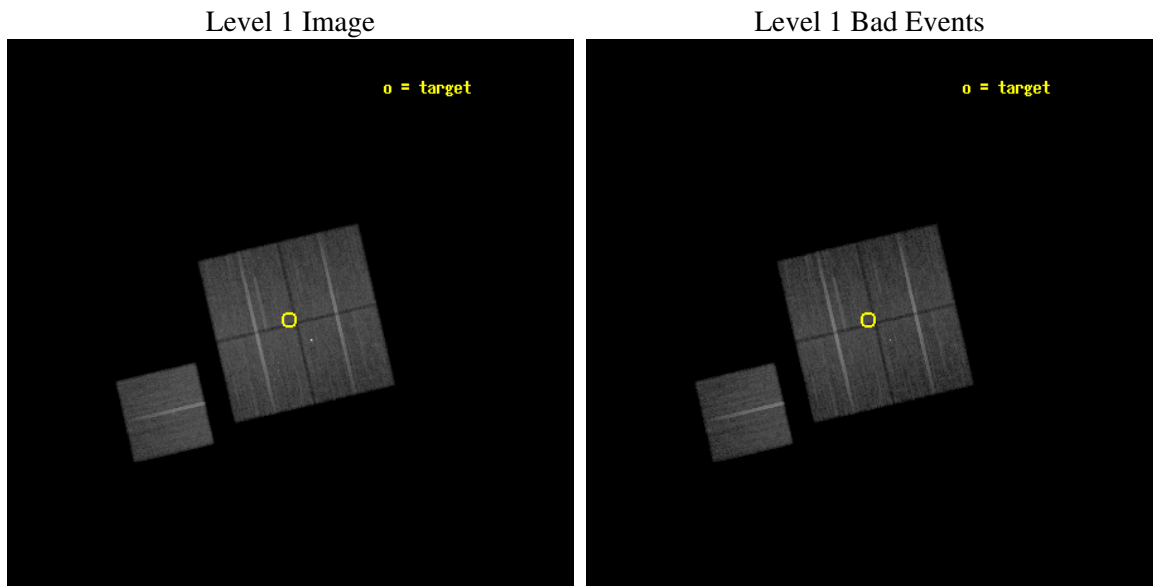
seq_num	701021
obs_id	5597
title	An X-ray study of the hot gas environment around the nearby radio galaxy IC 310
observer	Dr. Stephen Murray
object	IC 310
dtcycle	0
cycle	P
ra_targ	49.231587
dec_targ	41.358783
ra_nom	49.227959666116
dec_nom	41.355062476053
roll_nom	256.85042508713
revision	2
ontime	25488.199950993
livetime	25155.177854494
ontime0	25485.059030384
ontime1	25488.199950993
ontime2	25481.917960614
ontime3	25488.199950993
ontime6	25485.059030384
l2events	162565



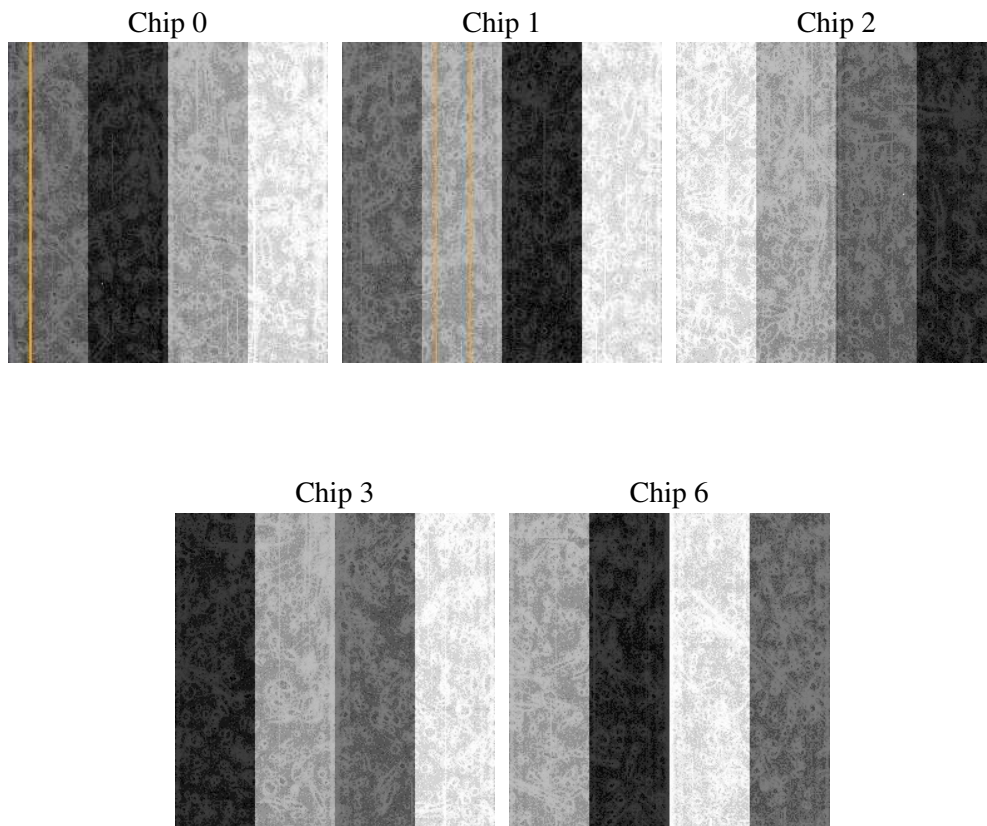
2 OBI

2.1 OBI

2.1.1 Images



2.1.2 Bias



2.1.3 Parameters

obi_num	0
ascdsver	7.6.7.1
caldbver	3.2.1
date	2006-04-07T10:19:44
revision	2

sched_exp_time	25310.000000
ontime	25567.853951901
ontime0	25564.713031292
ontime1	25567.853951901
ontime2	25561.571961522
ontime3	25567.853951901
ontime6	25564.713031292
l1events	1046496

2.1.4 Events

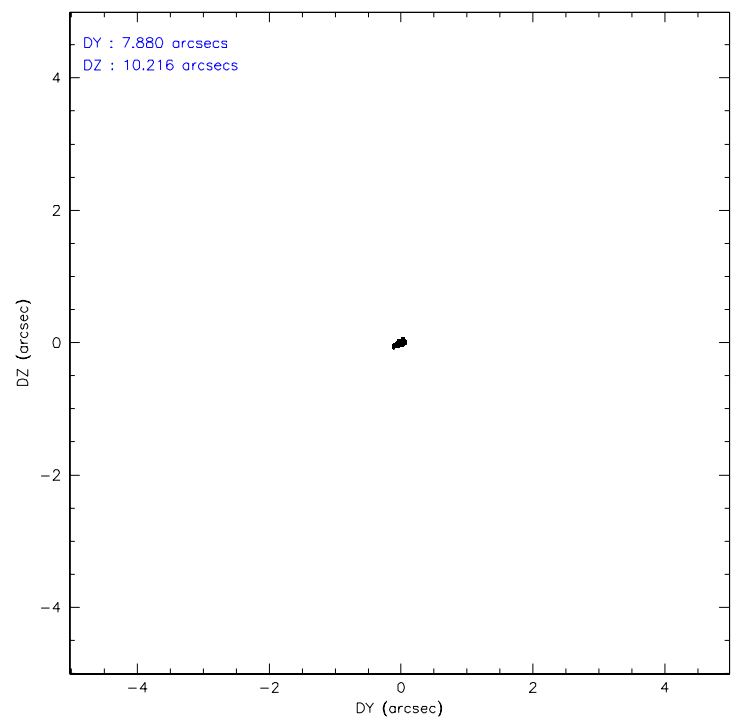
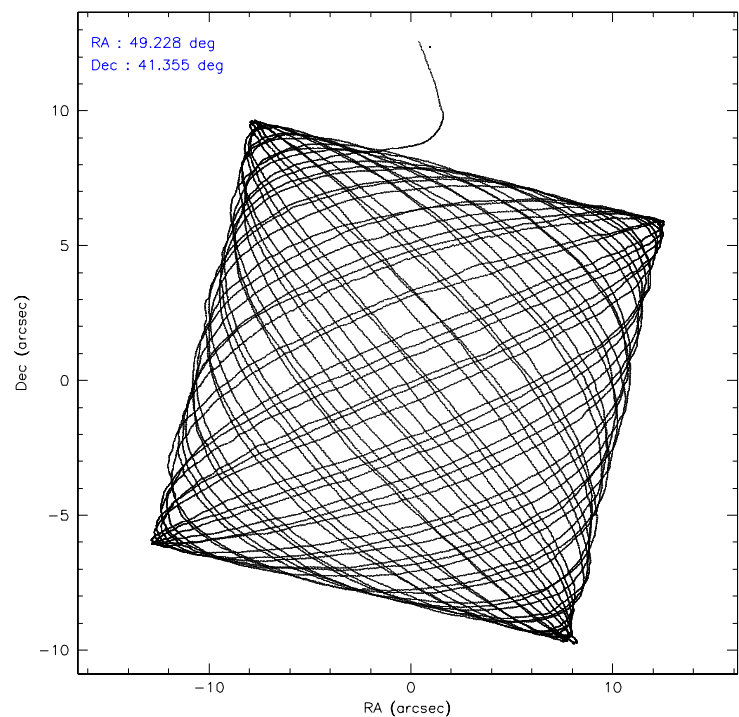
	ccd 0	ccd 1	ccd 2	ccd 3	ccd 6
level 1 events	201010	194774	215159	216302	219251
rejected events	161947	161509	180699	178421	182086
rejected %	80%	82%	83%	82%	83%

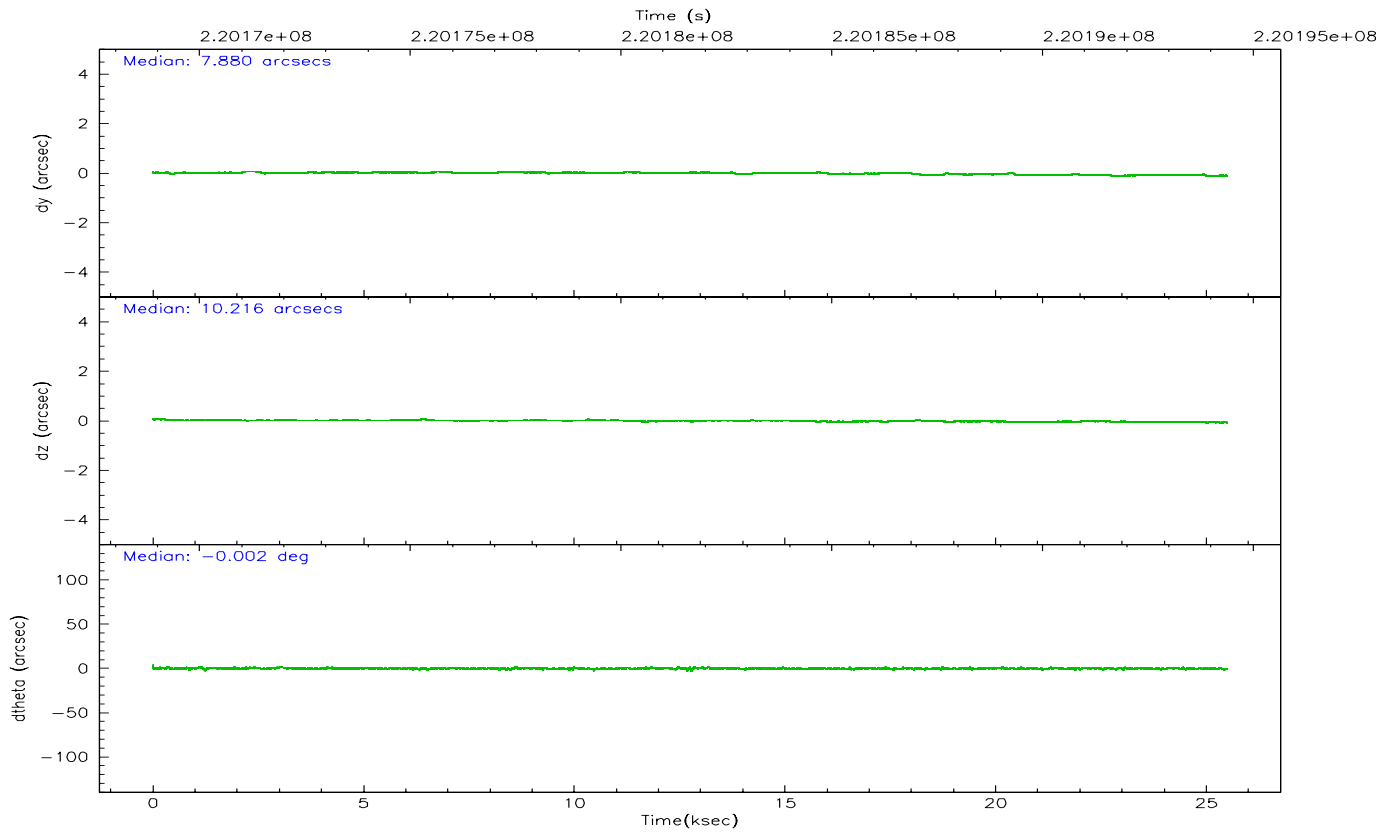
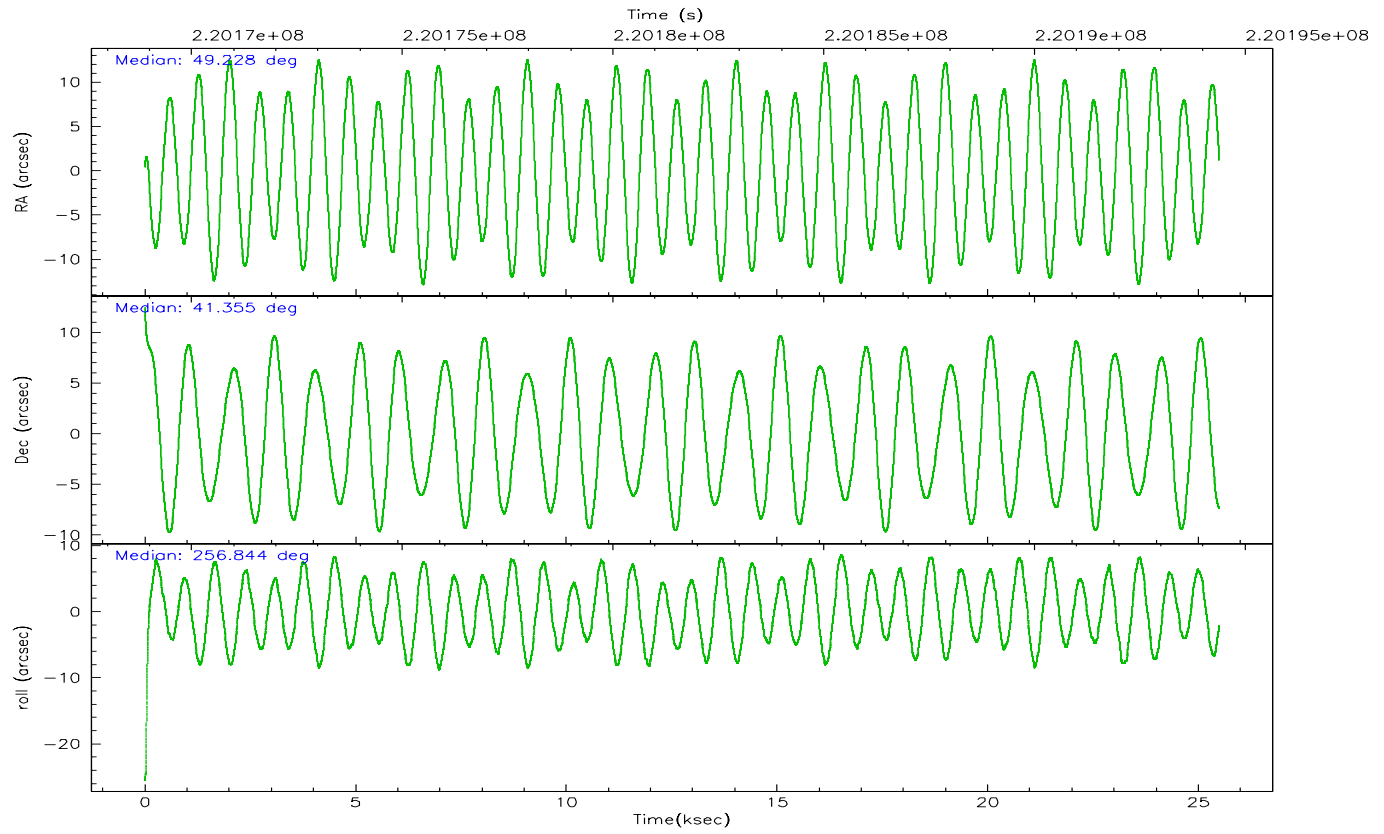
	ccd 0	ccd 1	ccd 2	ccd 3	ccd 6
grade 0 events	21673	16156	19279	21742	20117
	10%	8%	8%	10%	9%
grade 1 events	718	127	185	164	133
	0%	0%	0%	0%	0%
grade 2 events	6977	6466	5911	6031	6362
	3%	3%	2%	2%	2%
grade 3 events	2998	2758	2605	2792	2801
	1%	1%	1%	1%	1%
grade 4 events	2848	2723	2603	2758	2763
	1%	1%	1%	1%	1%
grade 5 events	8513	8653	7767	9164	8903
	4%	4%	3%	4%	4%
grade 6 events	4690	5281	4195	4689	5246
	2%	2%	1%	2%	2%
grade 7 events	152593	152610	172614	168962	172926
	75%	78%	80%	78%	78%

2.2 Compared Parameters

Parameter	Planned	Actual	Parameter	Planned	Actual
Instrument	ACIS	ACIS	Obspar format version number	6	6
Detector	ACIS-01236	ACIS-01236	Obspar file type	PREDICTED	ACTUAL
Grating	NONE	NONE	Obspar update status	NONE	UPDATED
Data mode	FAINT	FAINT	On-chip summing requested	N	N
Observation mode	POINTING	POINTING	Subarray requested	NONE	NONE
Pointing RA	49.217228	49.22795966611577	Alternating exposures requested	N	N
Pointing Dec	41.381205	41.35506247605302	Primary exposure time	0.000000	3.1
Pointing Roll	256.648843	256.8504250871325			
SIM focus pos (mm)	-0.782348	-0.7809083437167272			
SIM defocus (mm)	0	0.001439871863259334			
SIM translation stage pos (mm)	-233.592463	-233.5874344608287			
SIM translation stage offset (mm)	0	-0.005018542100998502			
Observation start time	220169081.184000	220168051.79041			
Observation start date	2004-12-23T06:03:37	2004-12-23T05:47:31			
Observation end time	220194391.184000	220194845.29162			
Observation end date	2004-12-23T13:05:27	2004-12-23T13:14:05			
Read mode	TIMED	TIMED			

2.3 Aspect



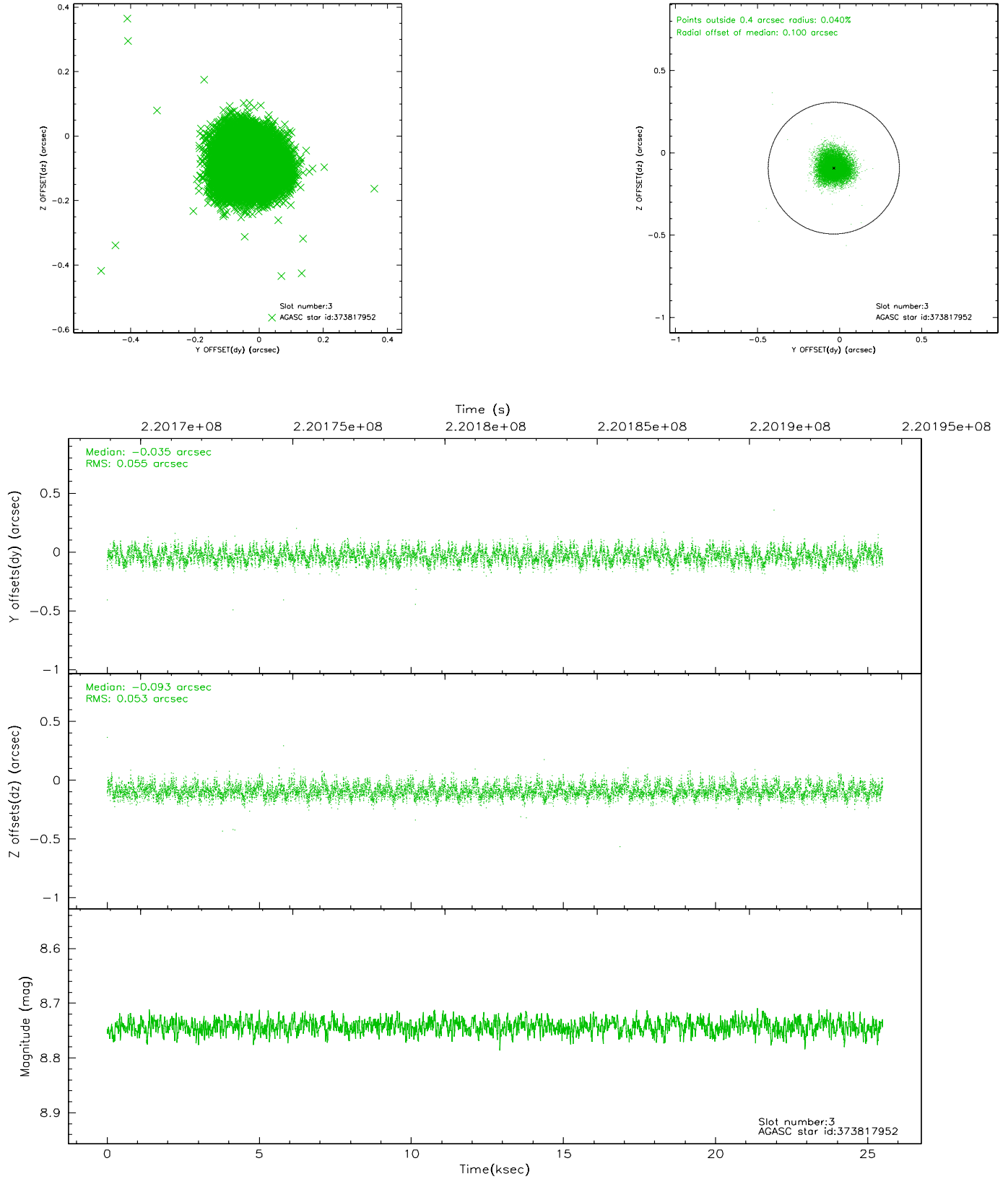


Slot Statistics

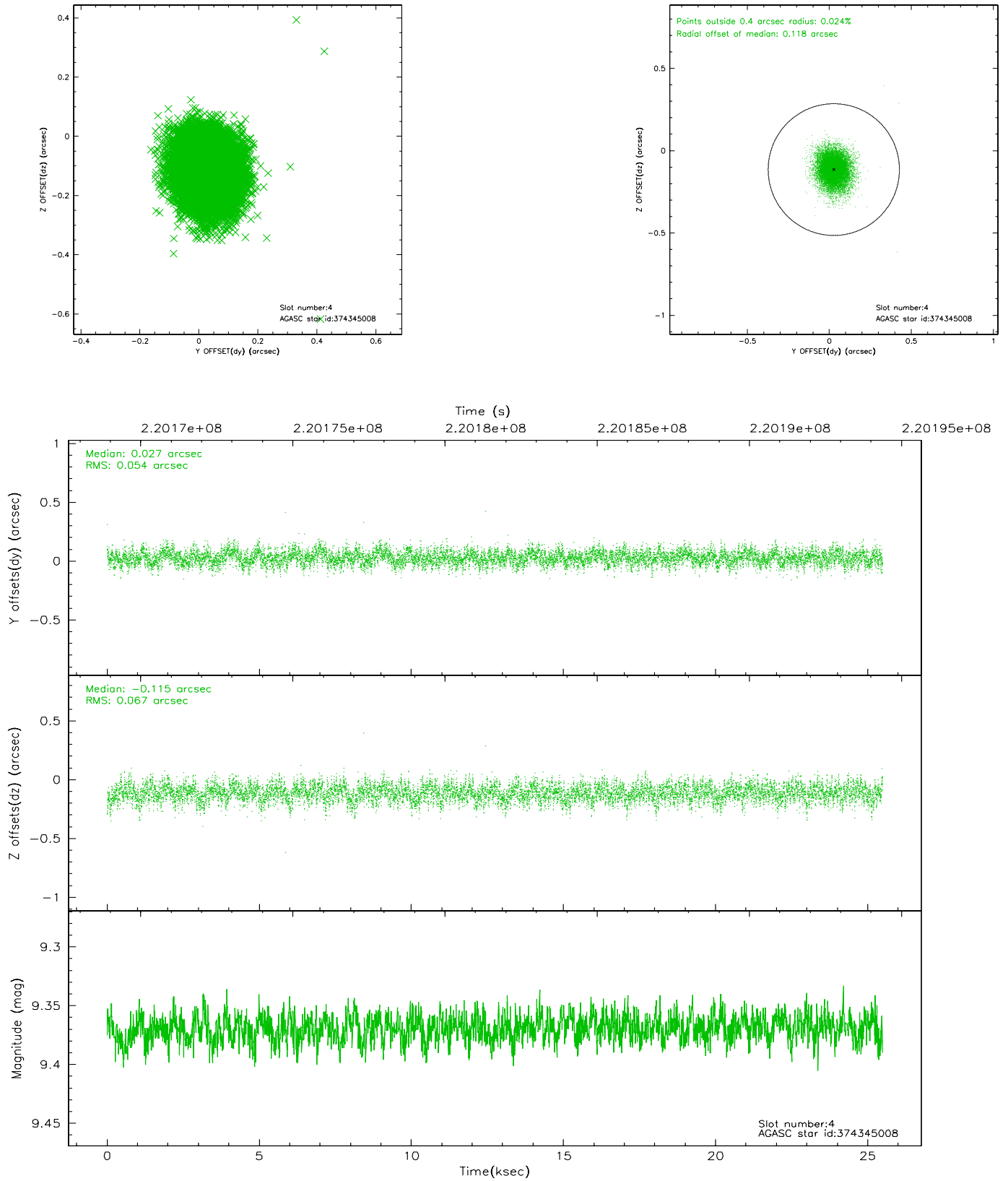
slot	status	id	mag	n_pts	med_dy	med_dz	dr1	dr2	ra	dec	mean_y	mean_z
0	FID	ACIS-I-4	7.17	6218	0.108	0.023	0.007	0.014	0.000000	0.000000	2151.86	1066.20
1	FID	ACIS-I-5	7.23	6219	-0.210	0.018	0.006	0.010	0.000000	0.000000	-1816.26	1064.08
2	FID	ACIS-I-6	7.25	6217	0.002	0.025	0.009	0.015	0.000000	0.000000	397.22	1708.40
3	GUIDE	373817952	8.74	12436	-0.035	-0.093	0.082	0.126	49.913424	40.978510	966.34	2174.14
4	GUIDE	374345008	9.37	12426	0.027	-0.115	0.091	0.149	48.768668	41.619367	-557.75	-1372.99
5	GUIDE	374355168	8.56	12430	-0.056	-0.118	0.072	0.115	48.517523	41.466988	128.48	-1909.50
6	GUIDE	373831072	9.47	12425	0.156	0.204	0.095	0.153	49.776828	40.594328	2398.50	2141.86
7	GUIDE	376070040	8.41	12431	-0.089	0.122	0.079	0.129	50.072031	41.897206	-2347.14	1797.32

2.4 Star Slots

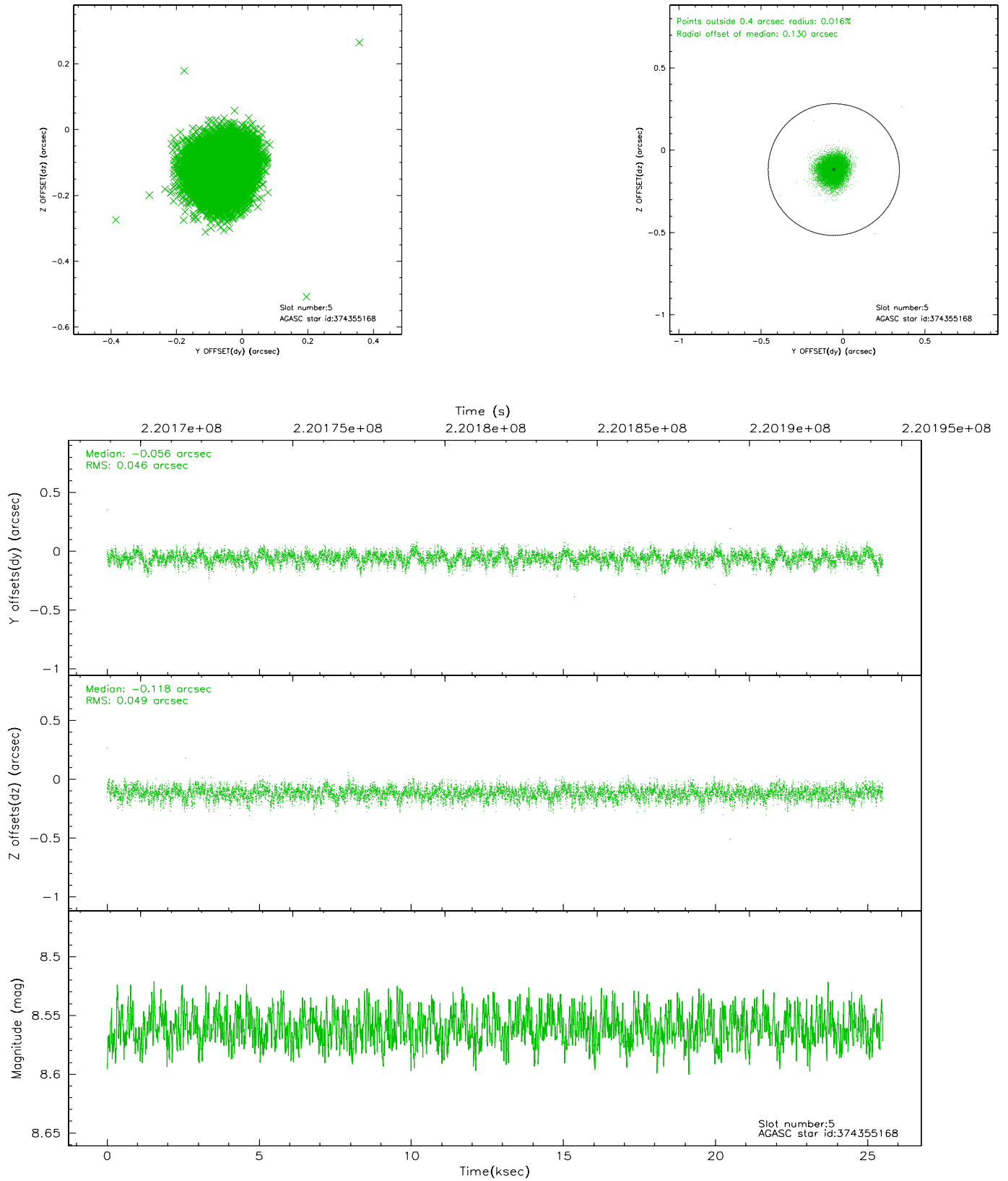
2.4.1 Slot 3



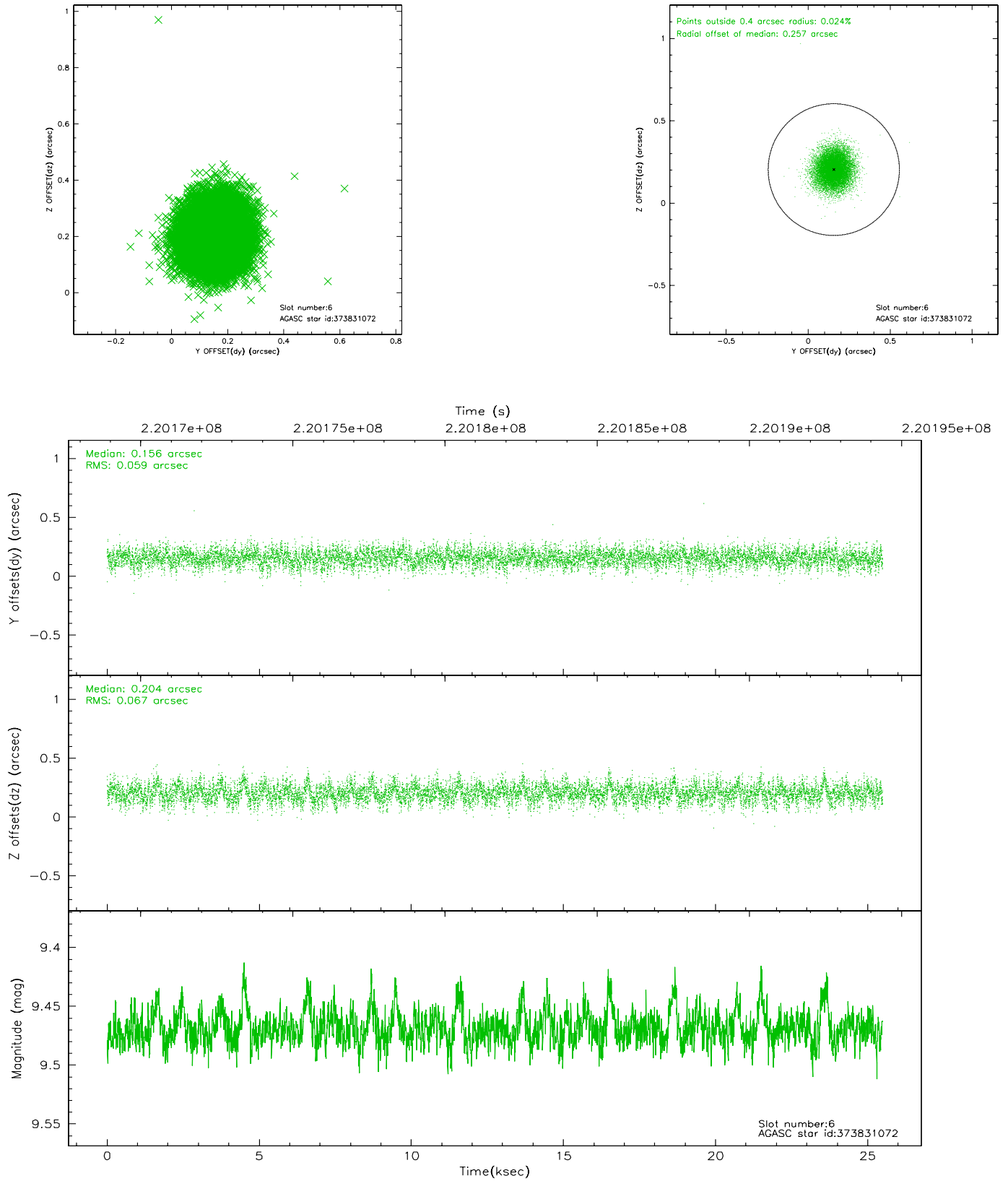
2.4.2 Slot 4



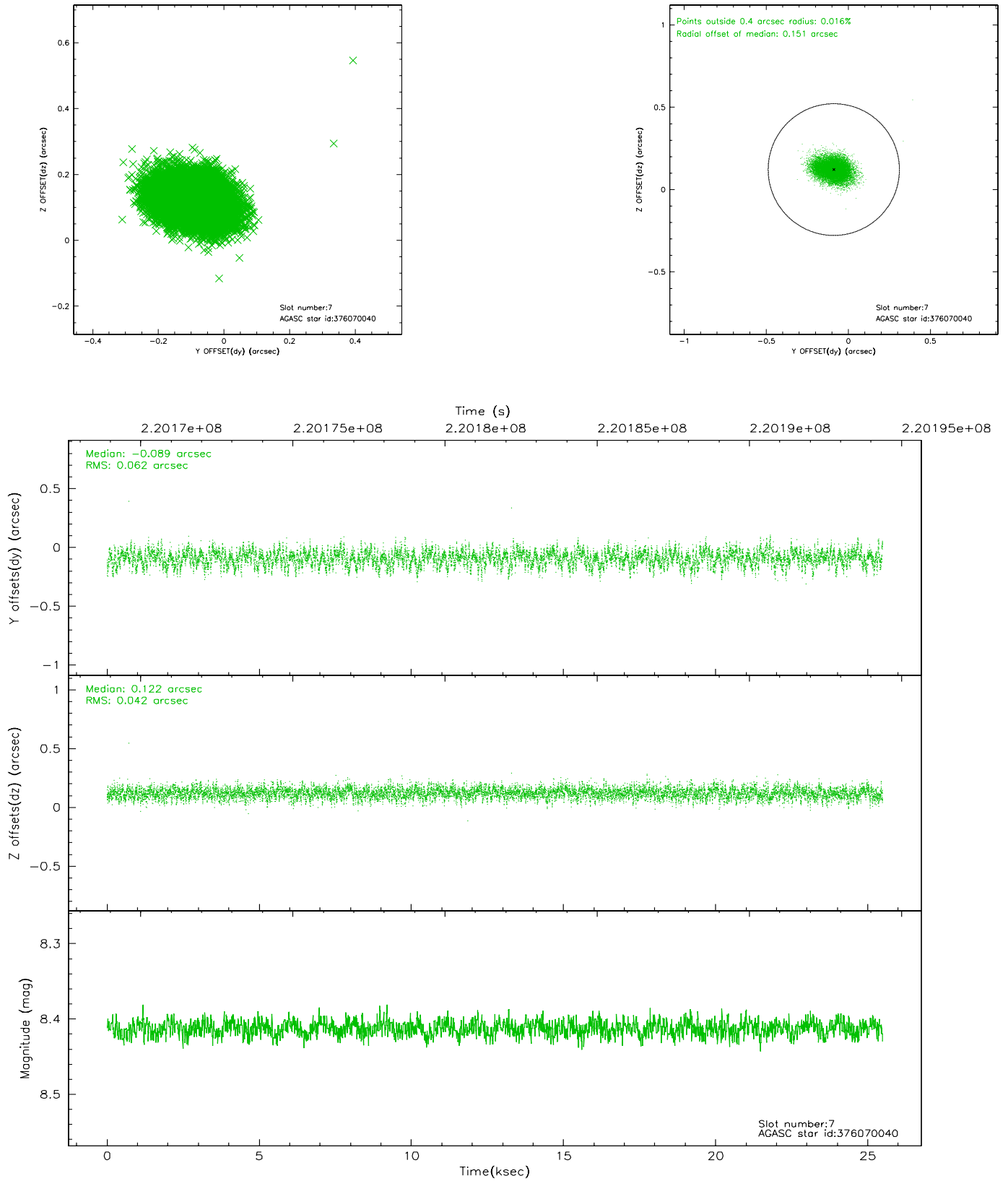
2.4.3 Slot 5



2.4.4 Slot 6

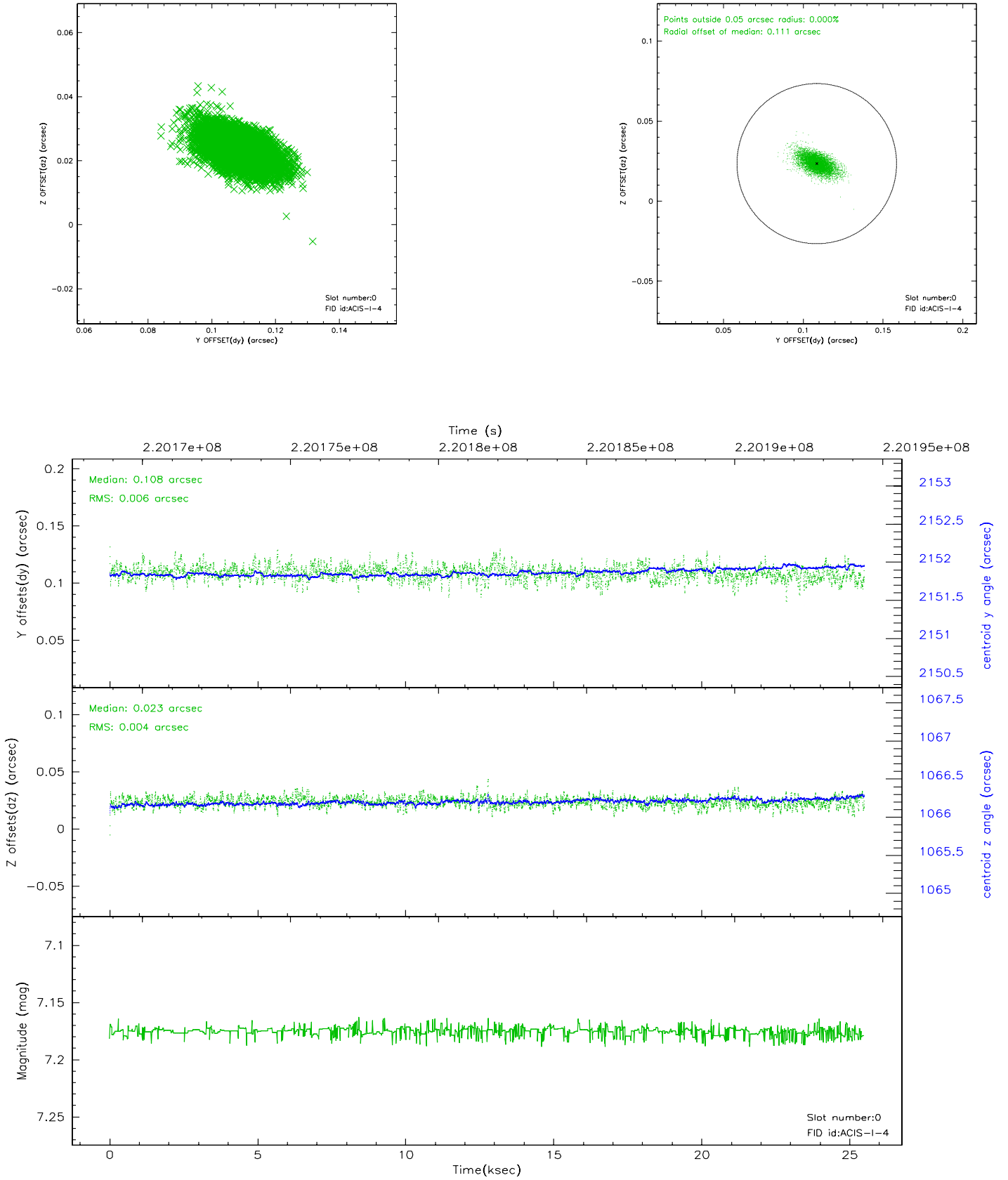


2.4.5 Slot 7

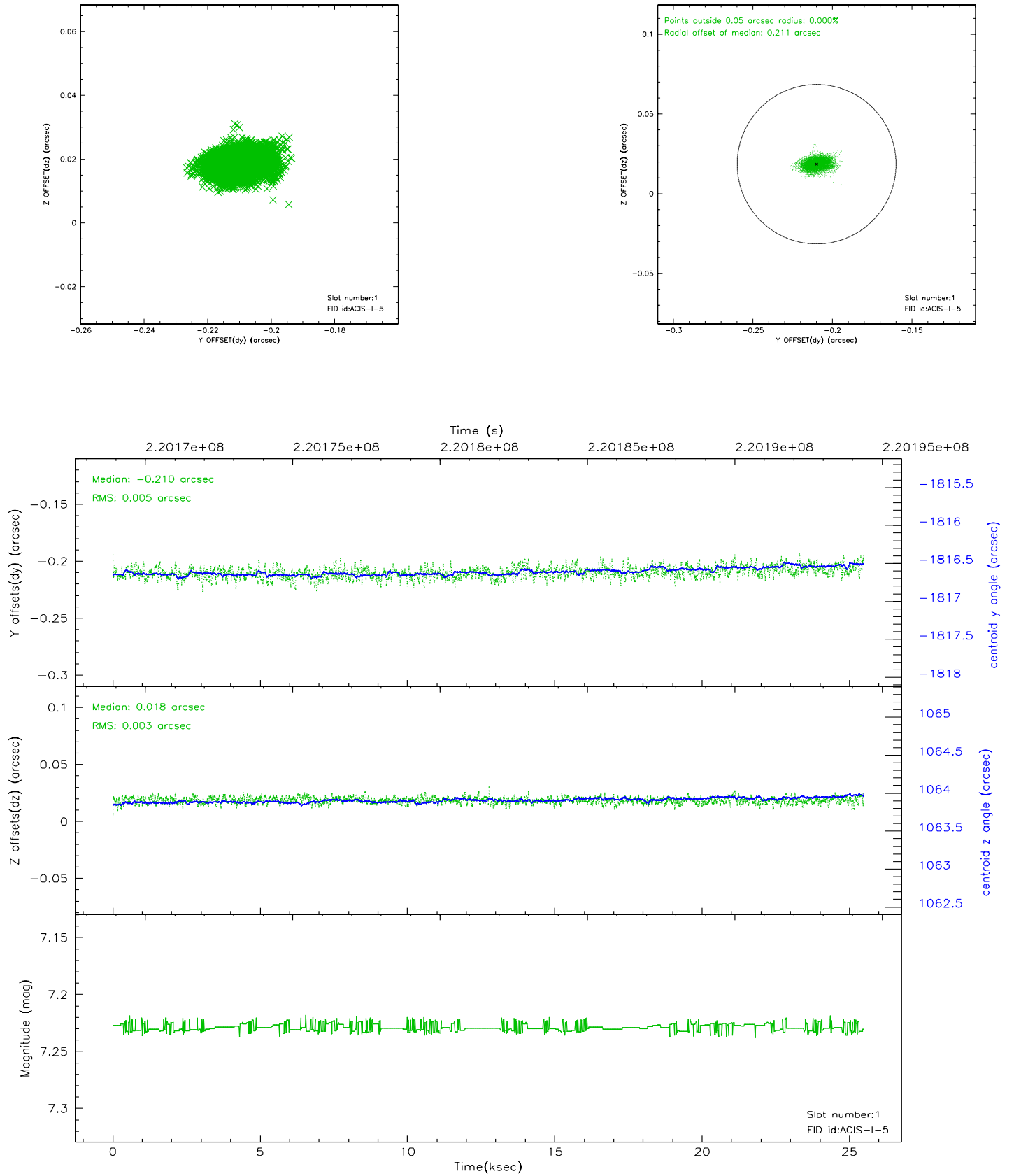


2.5 FID Slots

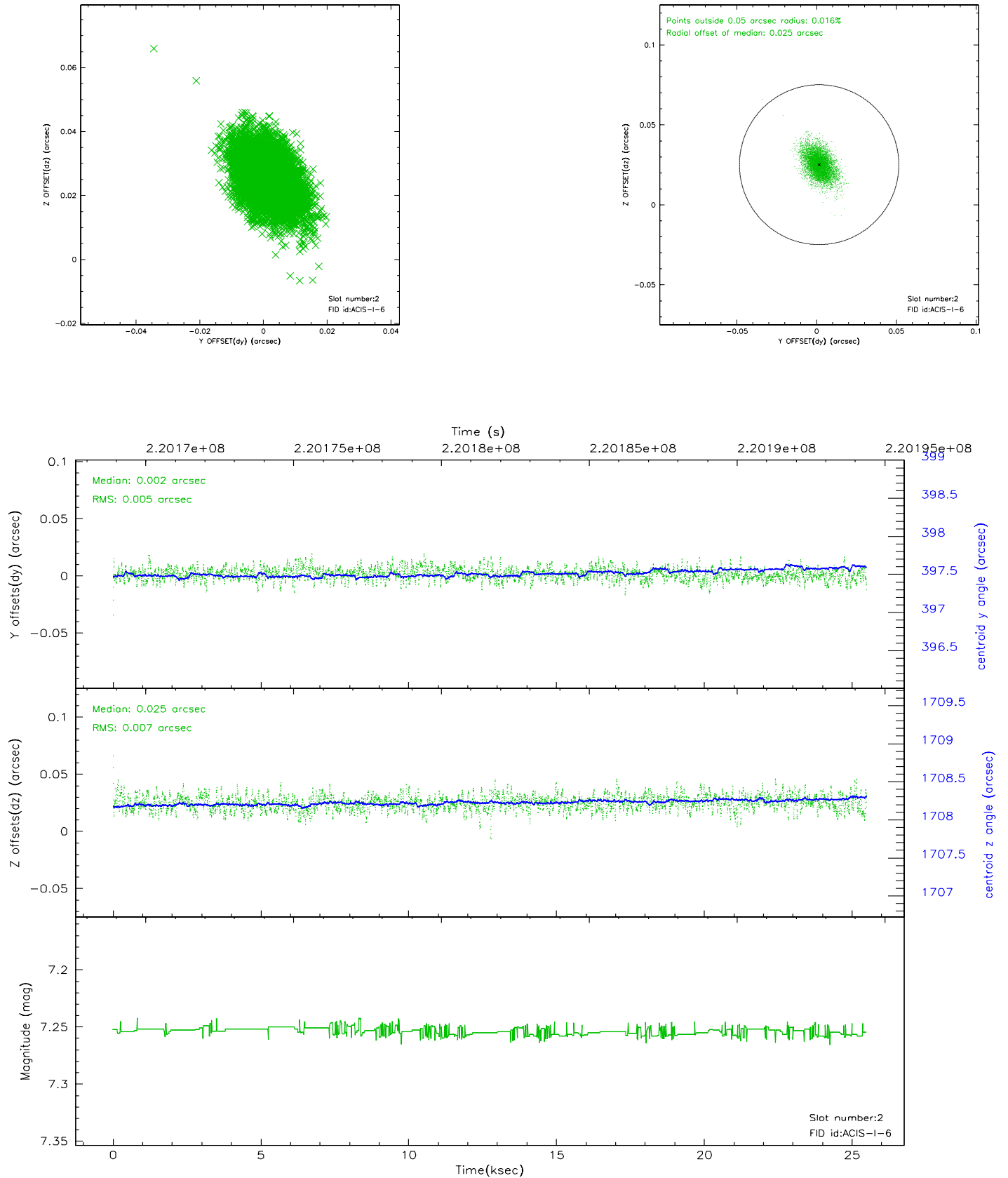
2.5.1 Slot 0



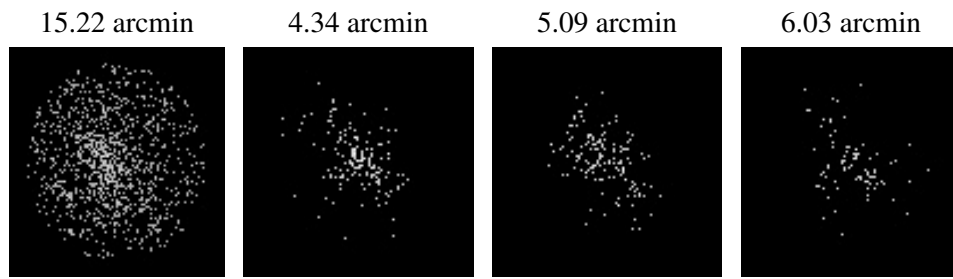
2.5.2 Slot 1



2.5.3 Slot 2



3 Point Sources



A Summary

A.1 Status

V&V Scientist	Beth Sundheim
V&V Date (YYYY-MM-DD)	2006.04.07
V&V Edition	1
V&V Disposition and Status	OK
V&V Charge Time	25.48819

A.2 Comments