

V&V Reference Report

L2 ASCDS Version : 8.4.3

Observation 55757 - L2 Version 3
Chandra X-Ray Center

L2 Processing Date : Feb 1 2012

Contents

1	Front	2
2	OBI	3
2.1	OBI	3
2.1.1	Images	3
2.1.2	Bias	3
2.1.3	Parameters	4
2.1.4	Events	4
2.2	Compared Parameters	5
2.3	Star Slots	6
2.4	FID Slots	6
A	Summary	7
A.1	Status	7
A.2	Comments	7

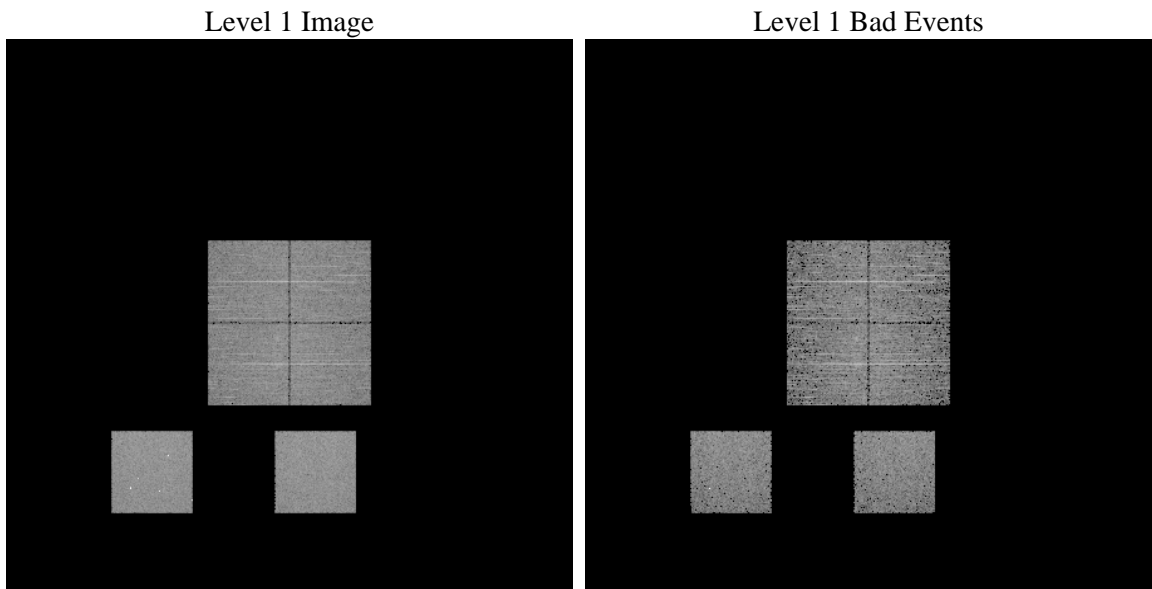
1 Front

seq_num	 	Sequence number
obs_id	55757	Observation id
title	ACIS-012357 diagnostics	Proposal title
observer	CHANDRA engineering request/realtime commanding	Principal investig
object	 	Source name
dtycle	0	
cycle	P	events from which exps? Prim/Second/Both
ra_targ	0.0	Observer's specified target RA [deg]
dec_targ	0.0	Observer's specified target Dec [deg]
ra_nom	130.00152485781	Nominal RA [deg]
dec_nom	7.128828267313	Nominal Dec [deg]
roll_nom	54.223735428427	Nominal Roll [deg]
revision	3	Processing version of data
ontime	3257.5999879241	Sum of GTIs [s]
livetime	3216.3502953858	Livetime [s]
ontime0	3257.5999879241	Sum of GTIs [s]
ontime1	3257.5999879241	Sum of GTIs [s]
ontime2	3257.5999879241	Sum of GTIs [s]
ontime3	3257.5999879241	Sum of GTIs [s]
ontime5	3257.5999879241	Sum of GTIs [s]
ontime7	3257.5999879241	Sum of GTIs [s]
l2events	157575	Number of level 2 events

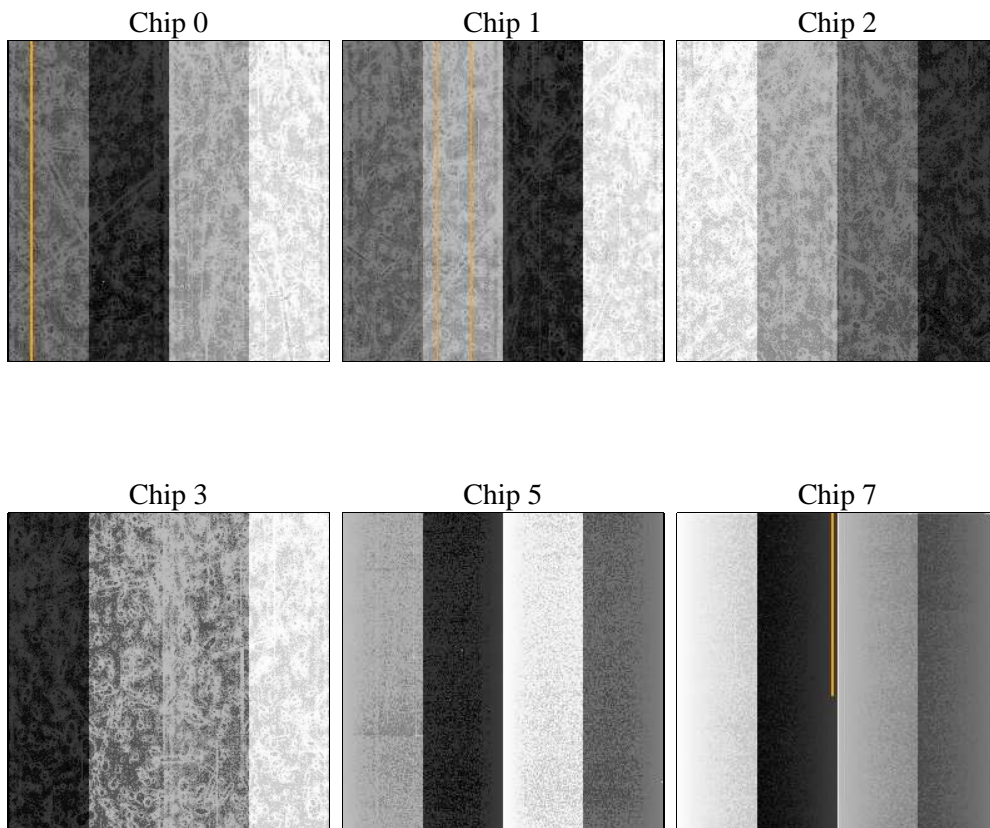
2 OBI

2.1 OBI

2.1.1 Images



2.1.2 Bias



2.1.3 Parameters

obi_num	0	Obi number	sched_exp_time	0.0	[s] Scheduled observation exposure time
ascdsver	8.4.3	Processing system revision	ontime	3257.5999879241	Sum of GTIs [s]
caldsver	4.4.7	 	ontime0	3257.5999879241	Sum of GTIs [s]
date	2012-02-01T13:10:55	Date and time of file creation	ontime1	3257.5999879241	Sum of GTIs [s]
revision	3	Processing version of data	ontime2	3257.5999879241	Sum of GTIs [s]
			ontime3	3257.5999879241	Sum of GTIs [s]
			ontime5	3257.5999879241	Sum of GTIs [s]
			ontime7	3257.5999879241	Sum of GTIs [s]
			l1events	320439	Number of level 1 events

2.1.4 Events

	ccd 0	ccd 1	ccd 2	ccd 3	ccd 5	ccd 7		ccd 0	ccd 1	ccd 2	ccd 3	ccd 5	ccd 7
level 1 events	47530	47685	48444	48974	65530	62276	grade 0 events	12260	11810	12249	12548	6593	6569
rejected events	24323	24612	25657	25743	26577	25857		25%	24%	25%	25%	10%	10%
rejected %	51%	51%	52%	52%	40%	41%	grade 1 events	92	85	98	97	247	36
								0%	0%	0%	0%	0%	0%
							grade 2 events	4311	4611	3988	4082	13435	7979
								9%	9%	8%	8%	20%	12%
							grade 3 events	1545	1456	1666	1650	1774	3351
								3%	3%	3%	3%	2%	5%
							grade 4 events	1556	1507	1613	1646	1676	3346
								3%	3%	3%	3%	2%	5%
							grade 5 events	1558	1549	1437	1676	3661	4164
								3%	3%	2%	3%	5%	6%
							grade 6 events	3743	3895	3501	3515	15823	15543
								7%	8%	7%	7%	24%	24%
							grade 7 events	22465	22772	23892	23760	22321	21288
								47%	47%	49%	48%	34%	34%

2.2 Compared Parameters

Parameter	Planned	Actual
Instrument	ACIS	ACIS
Detector	ACIS-012357	ACIS-012357
Grating	NONE	NONE
Data mode	FAINT	FAINT
Observation mode	SECONDARY	SECONDARY
[deg] Pointing RA	0	130.001524857807
[deg] Pointing Dec	0	7.128828267313038
[deg] Pointing Roll	0.0	54.2237354284272
[mm] SIM focus pos	-1.4281808131	-1.4281808131
[mm] SIM defocus	0.1051557500557434	0.1051557500557434
[mm] SIM translation stage pos	250.4660330802	250.4660330802
[mm] SIM translation stage offset	-0.01005726120527584	-0.01005726120527584
[s] Observation start time (MET)	410557177.777126	410557177.777126
Observation start date	2011-01-04T19:39:38	2011-01-04T19:39:37
[s] Observation end time (MET)	410561725.310791	410561725.310791
Observation end date	2011-01-04T20:55:25	2011-01-04T20:55:25
Read mode	TIMED	TIMED

Parameter	Planned	Actual
Obspar format version number	7	7
Obspar file type	PREDICTED	ACTUAL
Obspar update status	OVERRIDE	OVERRIDE
Number of optional ACIS chips dropped	0	0
On-chip summing requested	N	N
Subarray requested	NONE	NONE
Alternating exposures requested	N	N
[s] Primary exposure time	3.2	3.2

2.3 Star Slots

2.4 FID Slots

A Summary

A.1 Status

V&V Scientist	Jen Lauer
V&V Date (YYYY-MM-DD)	2012.02.08
V&V Edition	1
V&V Disposition and Status	OK
V&V Charge Time	3.2575999879241

A.2 Comments

A spatial region of the original bias map for CCD = 3 suffered from anomalously high data values. Pixels in the event data that were bias-corrected by one of the original affected bias pixels may have an apparent energy shift. While the change in energy is expected to be small (~ 20 eV), it depends on many parameters that have not yet been fully explored for this bias anomaly. The bias map for CCD = 3 has been reconstructed for this processing to remove this anomaly using scaled data from a comparable bias map from another observation. The pixels affected by the anomaly are bounded by chip coords:
(141,1),(162,1),(162,164),(141,174)