

V&V Reference Report

L2 ASCDS Version : 8.4.3

Observation 5487 - L2 Version 2
Chandra X-Ray Center

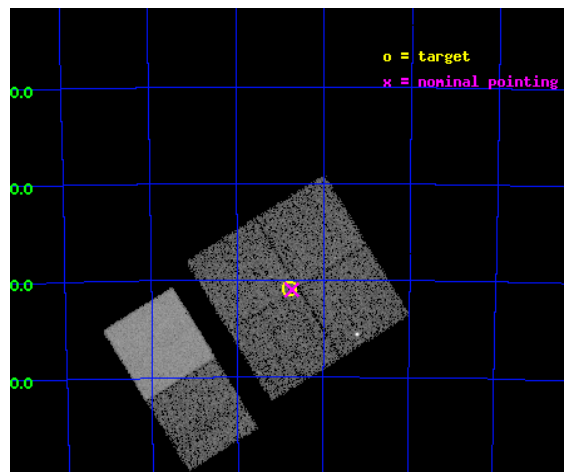
L2 Processing Date : Mar 25 2012

Contents

1	Front	2
2	OBI	3
2.1	OBI	3
2.1.1	Images	3
2.1.2	Bias	3
2.1.3	Parameters	4
2.1.4	Events	4
2.2	Compared Parameters	5
2.3	Aspect	6
2.4	Star Slots	9
2.4.1	Slot 3	9
2.4.2	Slot 4	10
2.4.3	Slot 5	11
2.4.4	Slot 6	12
2.4.5	Slot 7	13
2.5	FID Slots	14
2.5.1	Slot 0	14
2.5.2	Slot 1	15
2.5.3	Slot 2	16
A	Summary	17
A.1	Status	17
A.2	Comments	17

1 Front

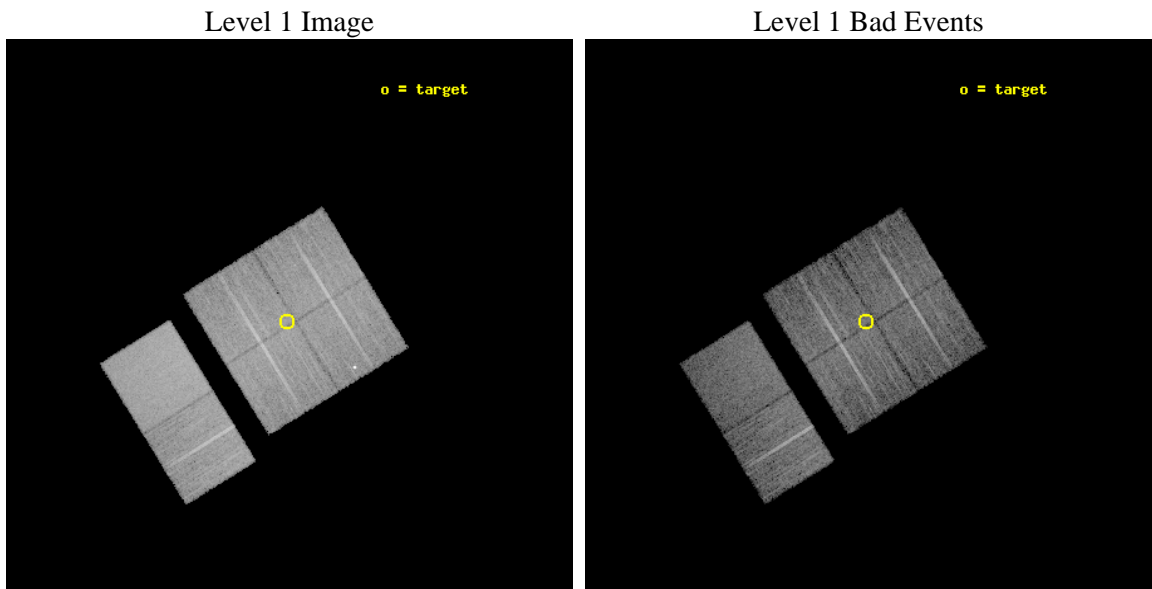
seq_num	400417	Sequence number
obs_id	5487	Observation id
title	Discovering X-ray pulsars in the Wing of the Small Magellanic Cloud	
observer	Prof Malcolm Coe	Principal investigator
object	SMCwing 8	Source name
dtcycle	0	
cycle	P	events from which exps? Prim/Second/Both
ra_targ	17.195833	Observer's specified target RA [deg]
dec_targ	-72.513889	Observer's specified target Dec [deg]
ra_nom	17.183088441833	Nominal RA [deg]
dec_nom	-72.516578238146	Nominal Dec [deg]
roll_nom	238.22657041378	Nominal Roll [deg]
revision	2	Processing version of data
ontime	9753.599963665	Sum of GTIs [s]
livetime	9630.0940080123	Livetime [s]
ontime0	9753.5130243897	Sum of GTIs [s]
ontime1	9753.5540643632	Sum of GTIs [s]
ontime2	9753.5951043665	Sum of GTIs [s]
ontime3	9753.599963665	Sum of GTIs [s]
ontime6	9753.599963665	Sum of GTIs [s]
ontime7	9753.599963665	Sum of GTIs [s]
l2events	91383	Number of level 2 events



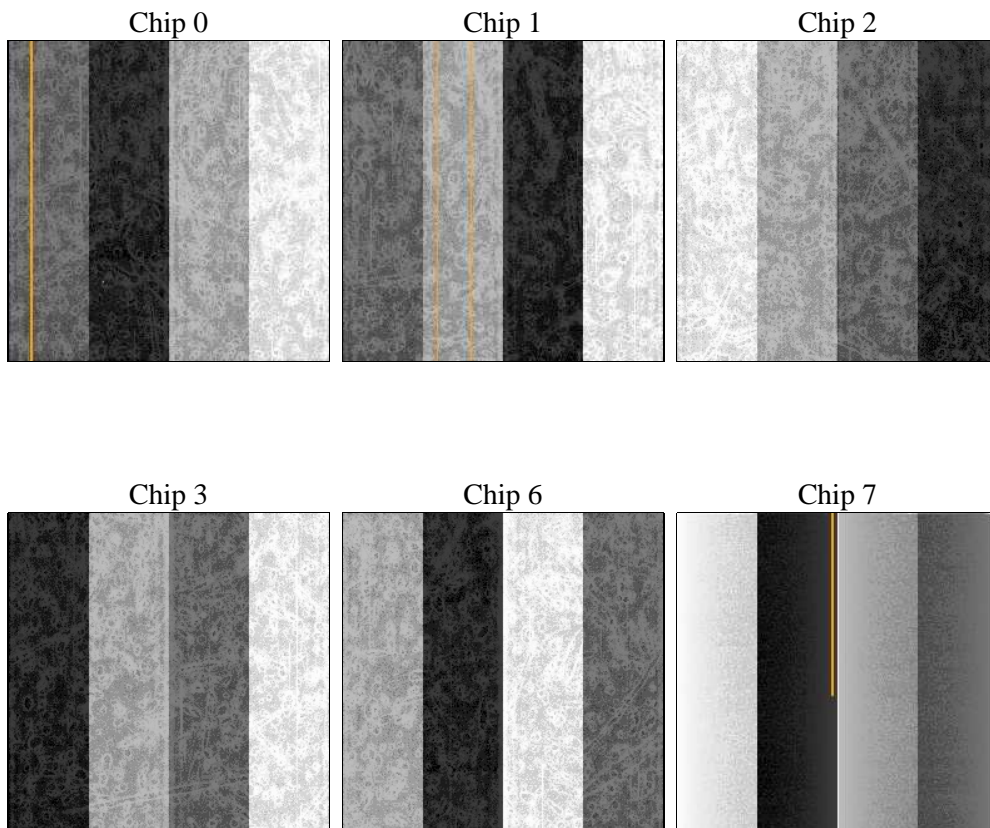
2 OBI

2.1 OBI

2.1.1 Images



2.1.2 Bias



2.1.3 Parameters

obi_num	0	Obi number	sched_exp_time	10000.000000	[s] Scheduled observation exposure time
ascdsver	8.4.3.1	Processing system revision	ontime	9753.599963665	Sum of GTIs [s]
caldsver	4.4.8	 	ontime0	9753.5130243897	Sum of GTIs [s]
date	2012-03-25T15:52:13	Date and time of file creation	ontime1	9753.5540643632	Sum of GTIs [s]
revision	2	Processing version of data	ontime2	9753.5951043665	Sum of GTIs [s]
			ontime3	9753.599963665	Sum of GTIs [s]
			ontime6	9753.599963665	Sum of GTIs [s]
			ontime7	9753.599963665	Sum of GTIs [s]
			l1events	514508	Number of level 1 events

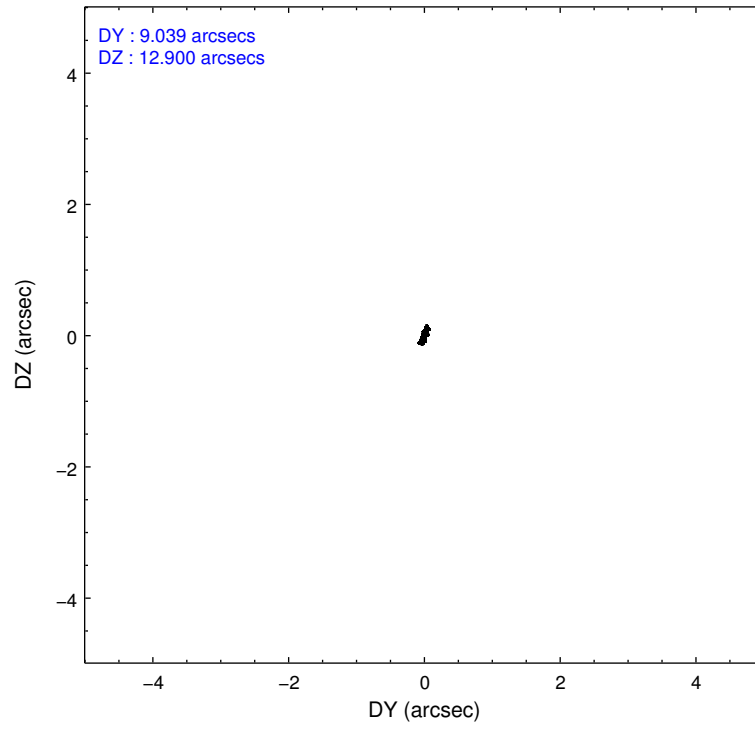
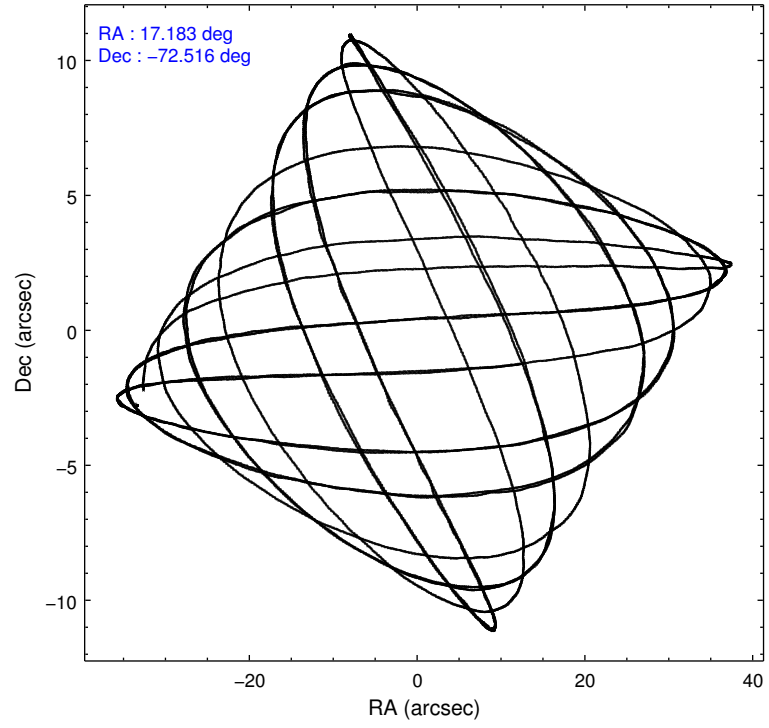
2.1.4 Events

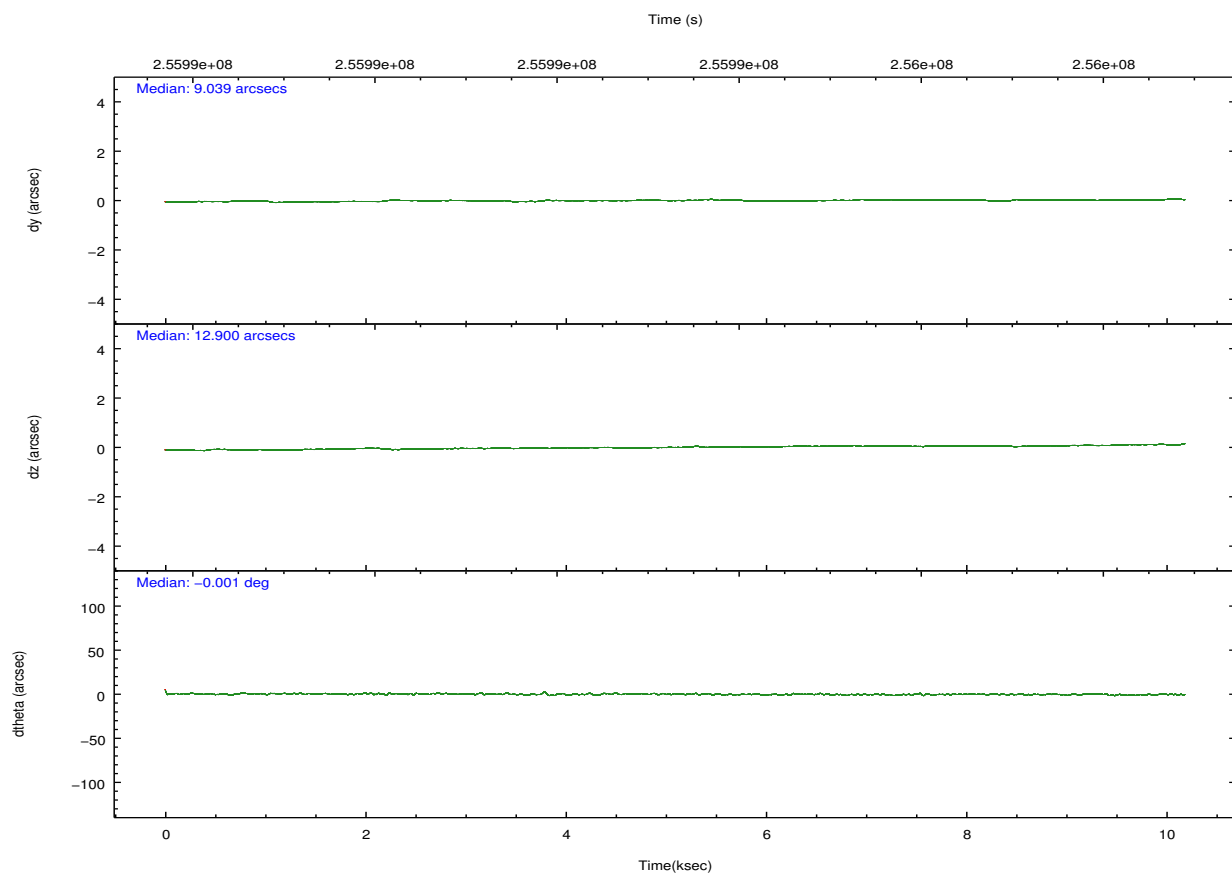
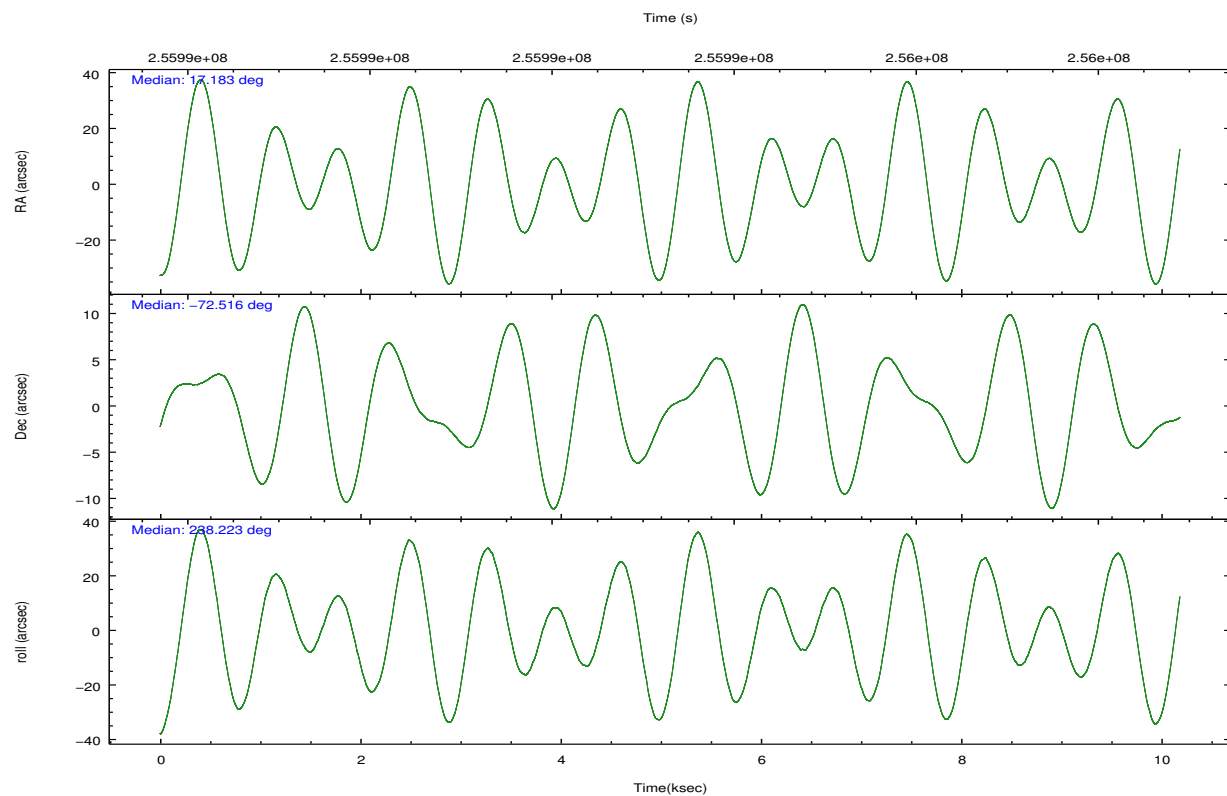
	ccd 0	ccd 1	ccd 2	ccd 3	ccd 6	ccd 7		ccd 0	ccd 1	ccd 2	ccd 3	ccd 6	ccd 7
level 1 events	77025	76394	83077	79276	86116	112620	grade 0 events	5818	4334	4484	4280	3838	4177
rejected events	64812	65701	73188	69458	76121	65655		7%	5%	5%	5%	4%	3%
rejected %	84%	86%	88%	87%	88%	58%	grade 1 events	61	42	47	48	45	108
								0%	0%	0%	0%	0%	0%
							grade 2 events	2467	2275	2097	1927	2209	9446
								3%	2%	2%	2%	2%	8%
							grade 3 events	1024	1029	887	934	942	4083
								1%	1%	1%	1%	1%	3%
							grade 4 events	1026	1041	906	944	956	4119
								1%	1%	1%	1%	1%	3%
							grade 5 events	3292	3465	3129	3771	3807	10745
								4%	4%	3%	4%	4%	9%
							grade 6 events	1889	2020	1520	1744	2056	25172
								2%	2%	1%	2%	2%	22%
							grade 7 events	61448	62188	70007	65628	72263	54770
								79%	81%	84%	82%	83%	48%

2.2 Compared Parameters

Parameter	Planned	Actual	Parameter	Planned	Actual
Instrument	ACIS	ACIS	Obspar format version number	7	7
Detector	ACIS-012367	ACIS-012367	Obspar file type	PREDICTED	ACTUAL
Grating	NONE	NONE	Obspar update status	NONE	UPDATED
Data mode	FAINT	FAINT	Number of optional ACIS chips dropped	0	0
Observation mode	POINTING	POINTING	On-chip summing requested	N	N
[deg] Pointing RA	17.185689	17.18308844183306	Subarray requested	NONE	NONE
[deg] Pointing Dec	-72.489175	-72.5165782381462	Alternating exposures requested	N	N
[deg] Pointing Roll	238.020367	238.2265704137763	[s] Primary exposure time	0.000000	3.2
[mm] SIM focus pos	-0.782348	-0.7809083437167272			
[mm] SIM defocus	0	0.001439871863259334			
[mm] SIM translation stage pos	-233.592463	-233.5874344608287			
[mm] SIM translation stage offset	0	-0.005018542100998502			
[s] Observation start time (MET)	255988388.184000	255988011.95449			
Observation start date	2006-02-10T19:52:03	2006-02-10T19:46:51			
[s] Observation end time (MET)	255998388.184000	255998993.2925			
Observation end date	2006-02-10T22:38:43	2006-02-10T22:49:53			
Read mode	TIMED	TIMED			

2.3 Aspect



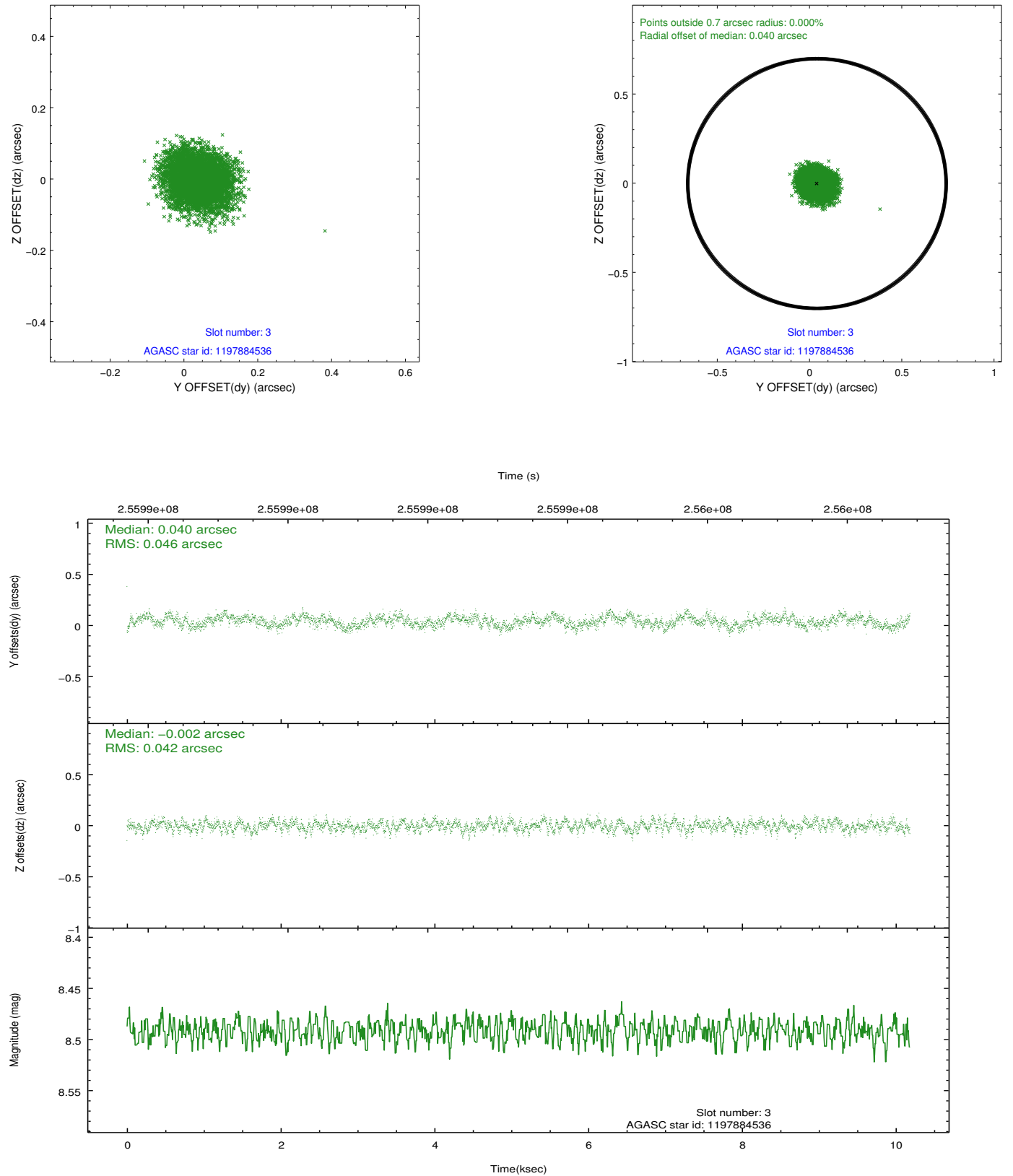


Slot Statistics

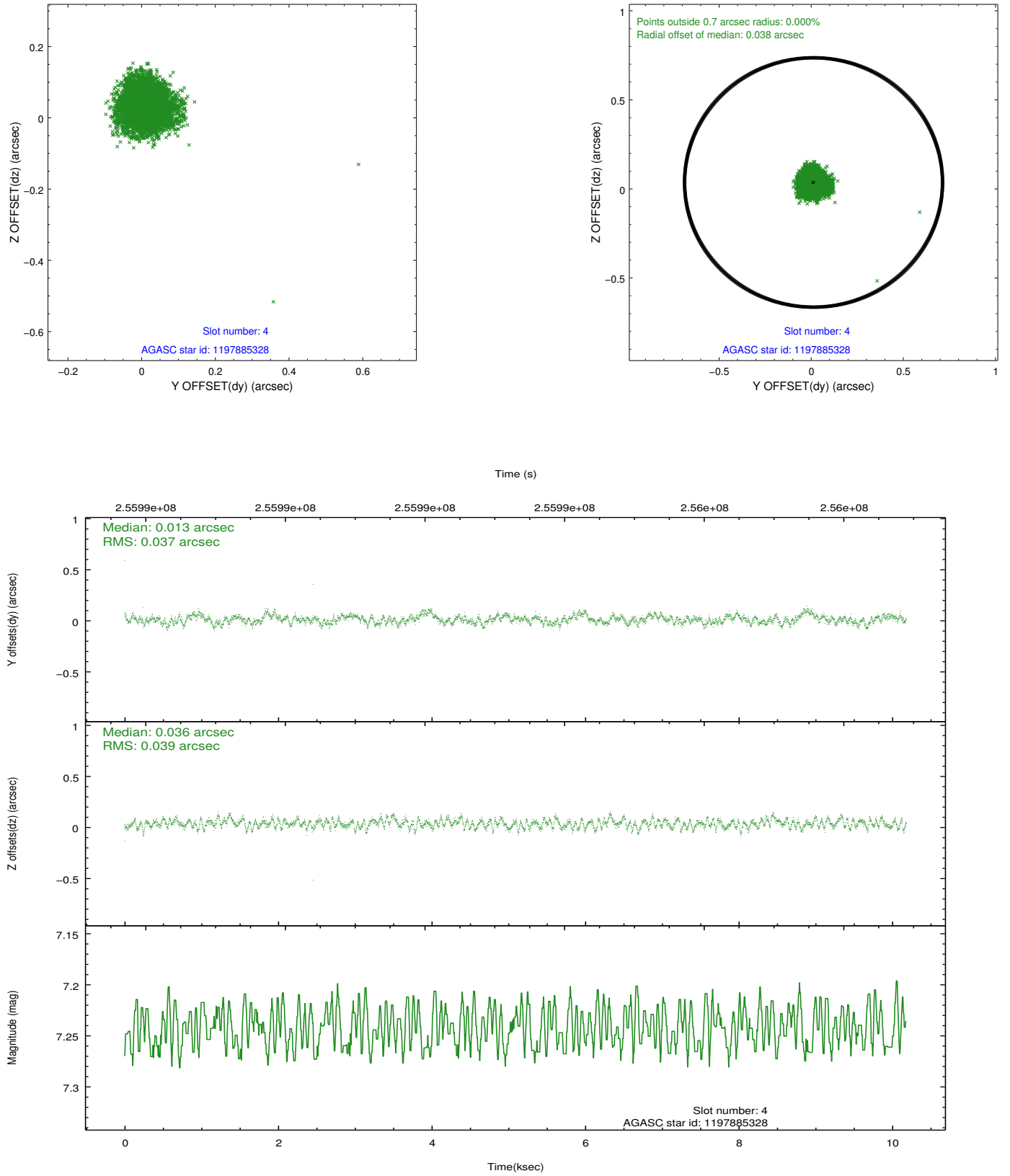
slot	status	id	mag	n_pts	med_dy	med_dz	dr1	dr2	ra	dec	mean_y	mean_z
0	FID	ACIS-I-1	7.24	2485	-0.010	-0.006	0.008	0.014	0.000000	0.000000	930.57	-836.46
1	FID	ACIS-I-4	7.18	2485	0.168	0.032	0.007	0.012	0.000000	0.000000	2151.10	1063.11
2	FID	ACIS-I-5	7.22	2484	-0.256	0.044	0.007	0.013	0.000000	0.000000	-1816.99	1061.61
3	GUIDE	1197884536	8.49	4968	0.040	-0.002	0.068	0.106	17.160729	-71.835289	-1981.48	-1270.38
4	GUIDE	1197885328	7.24	4968	0.013	0.036	0.057	0.090	16.283090	-71.733943	-1760.93	-2299.52
5	GUIDE	1198189696	7.37	4969	-0.056	0.109	0.053	0.084	15.223750	-72.697522	1777.69	-1365.97
6	GUIDE	1198282744	9.00	4963	0.044	-0.044	0.077	0.124	17.028326	-73.013356	1689.21	859.33
7	GUIDE	1198283128	7.92	4967	-0.038	-0.098	0.055	0.086	17.272580	-72.642428	419.20	371.77

2.4 Star Slots

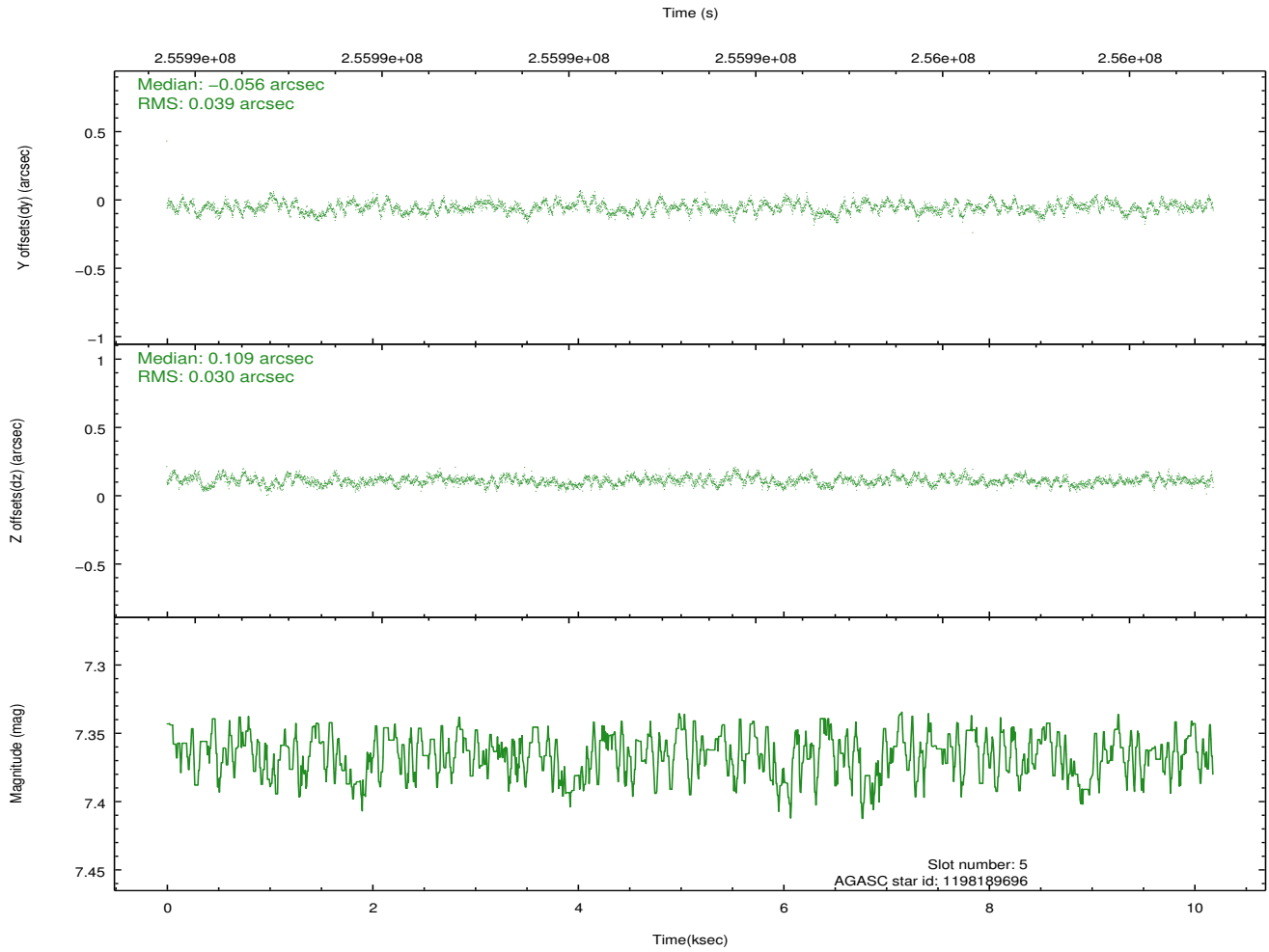
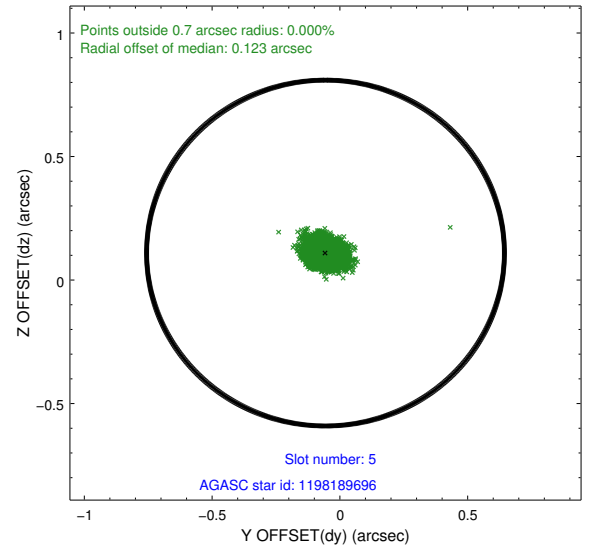
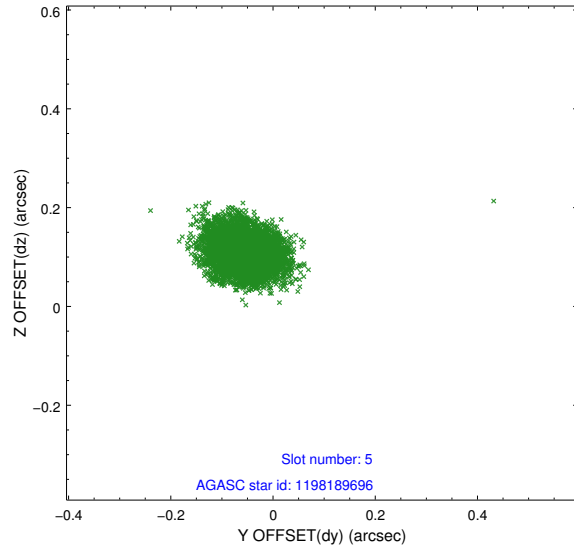
2.4.1 Slot 3



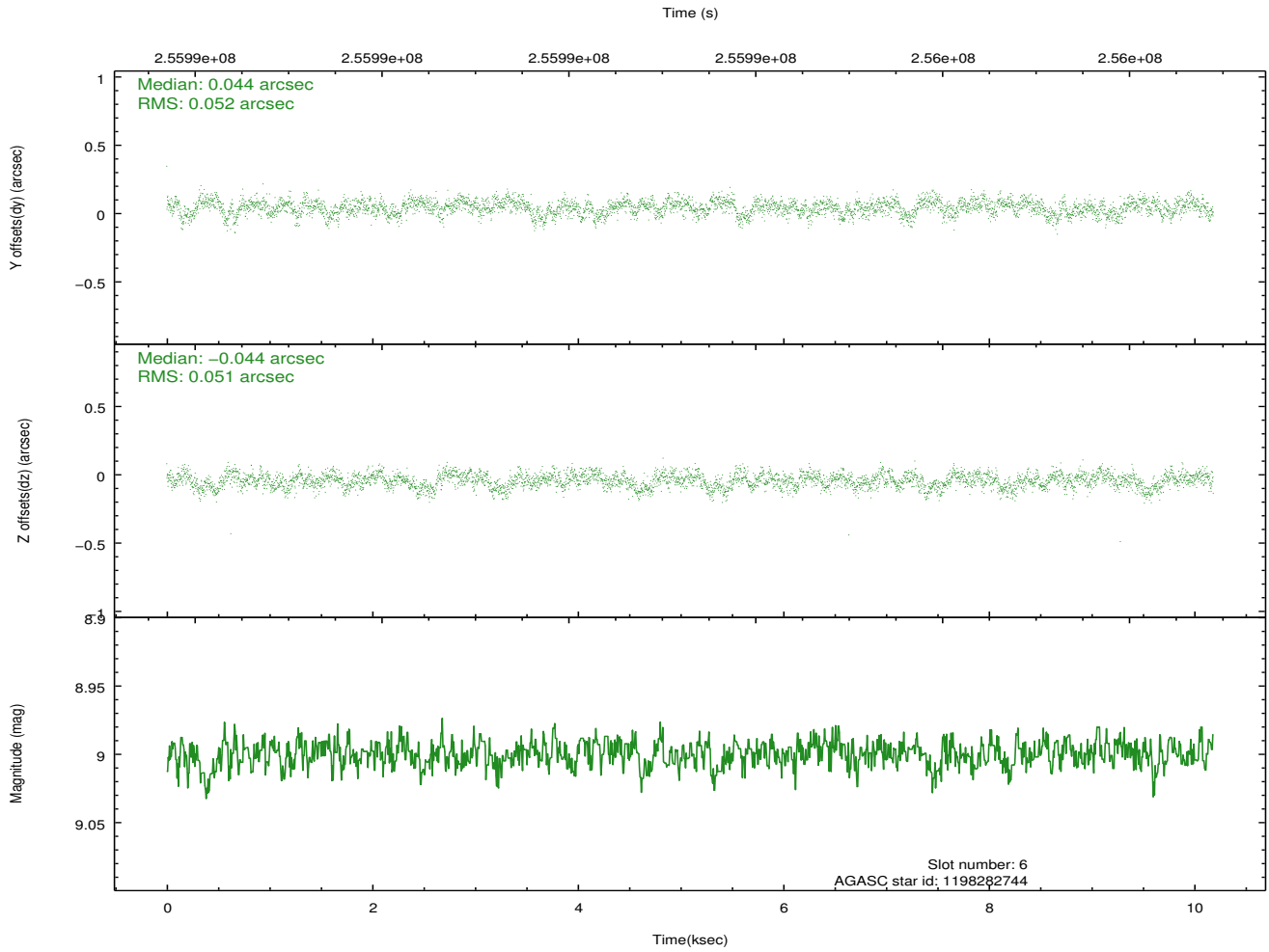
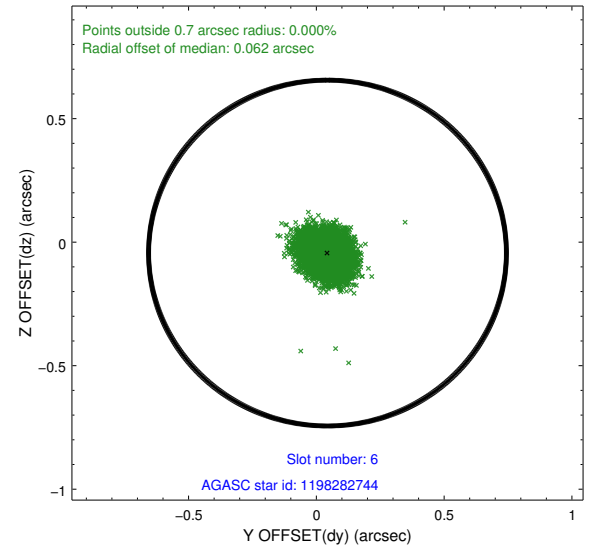
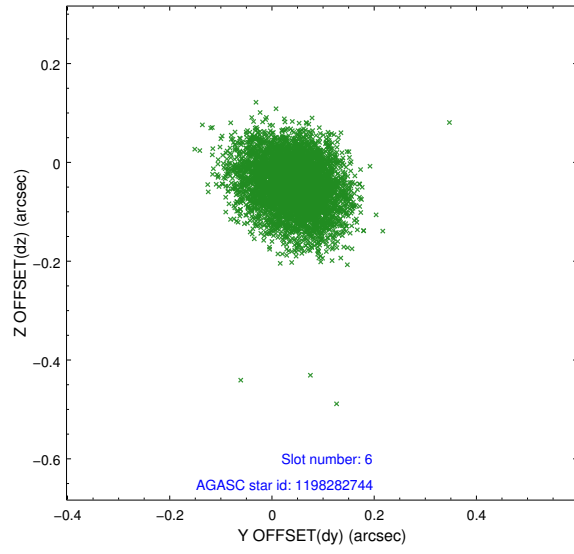
2.4.2 Slot 4



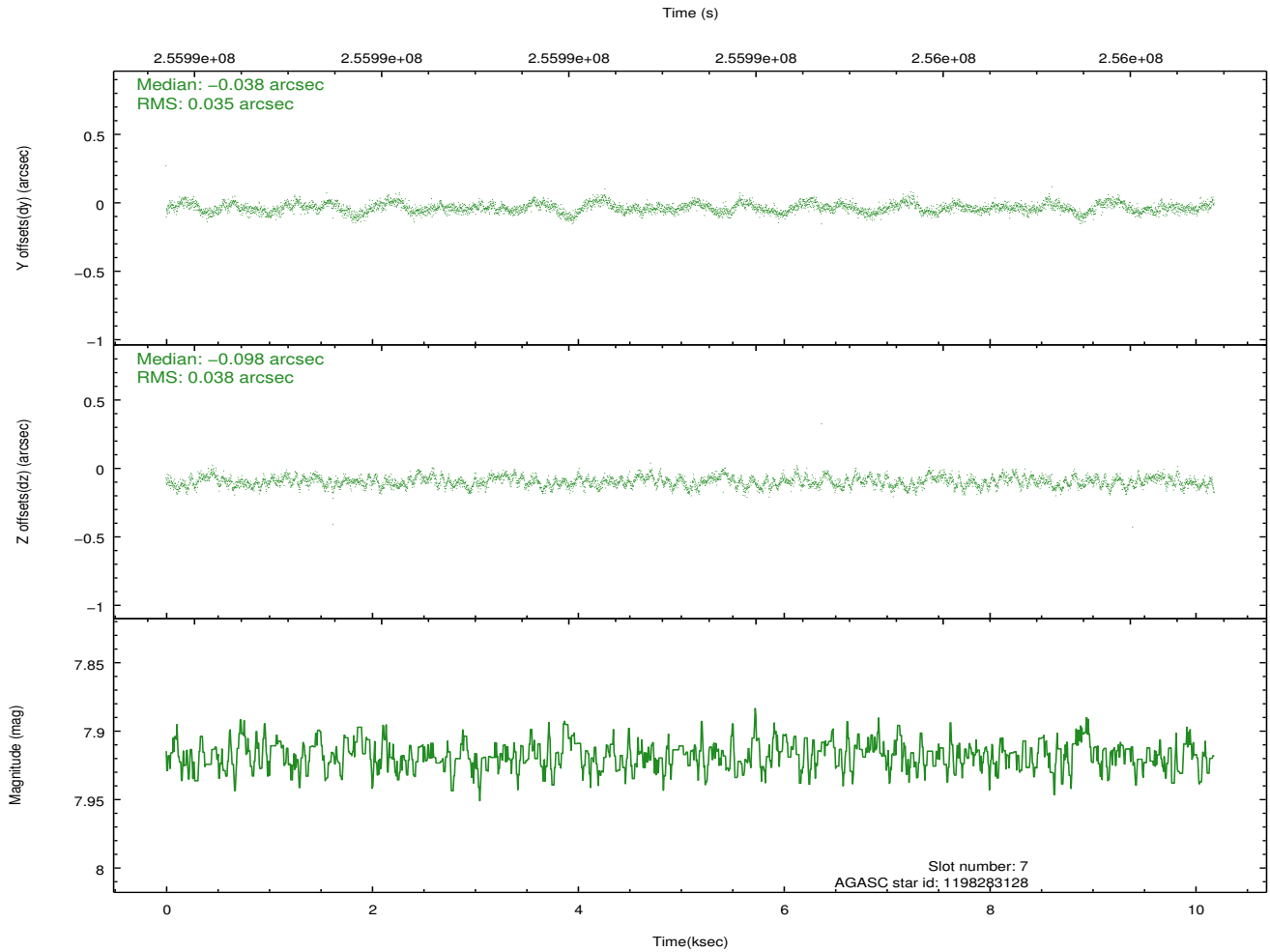
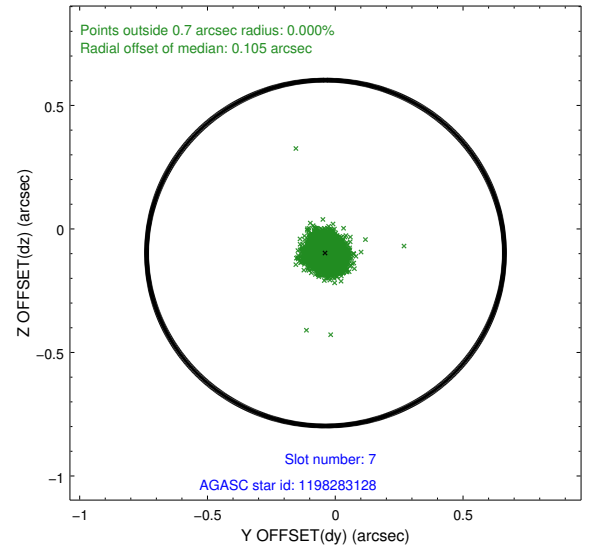
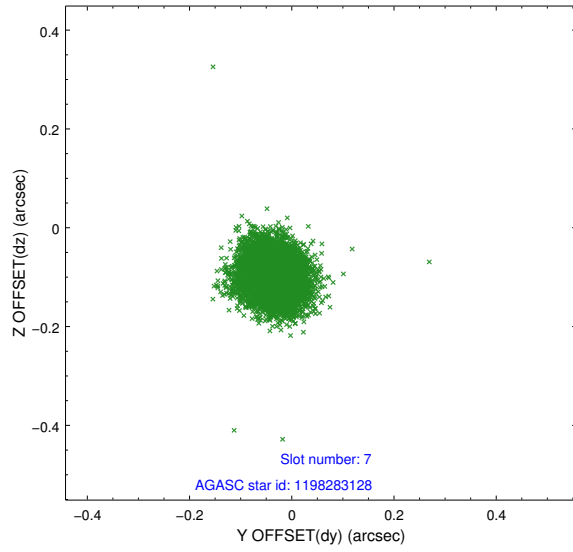
2.4.3 Slot 5



2.4.4 Slot 6

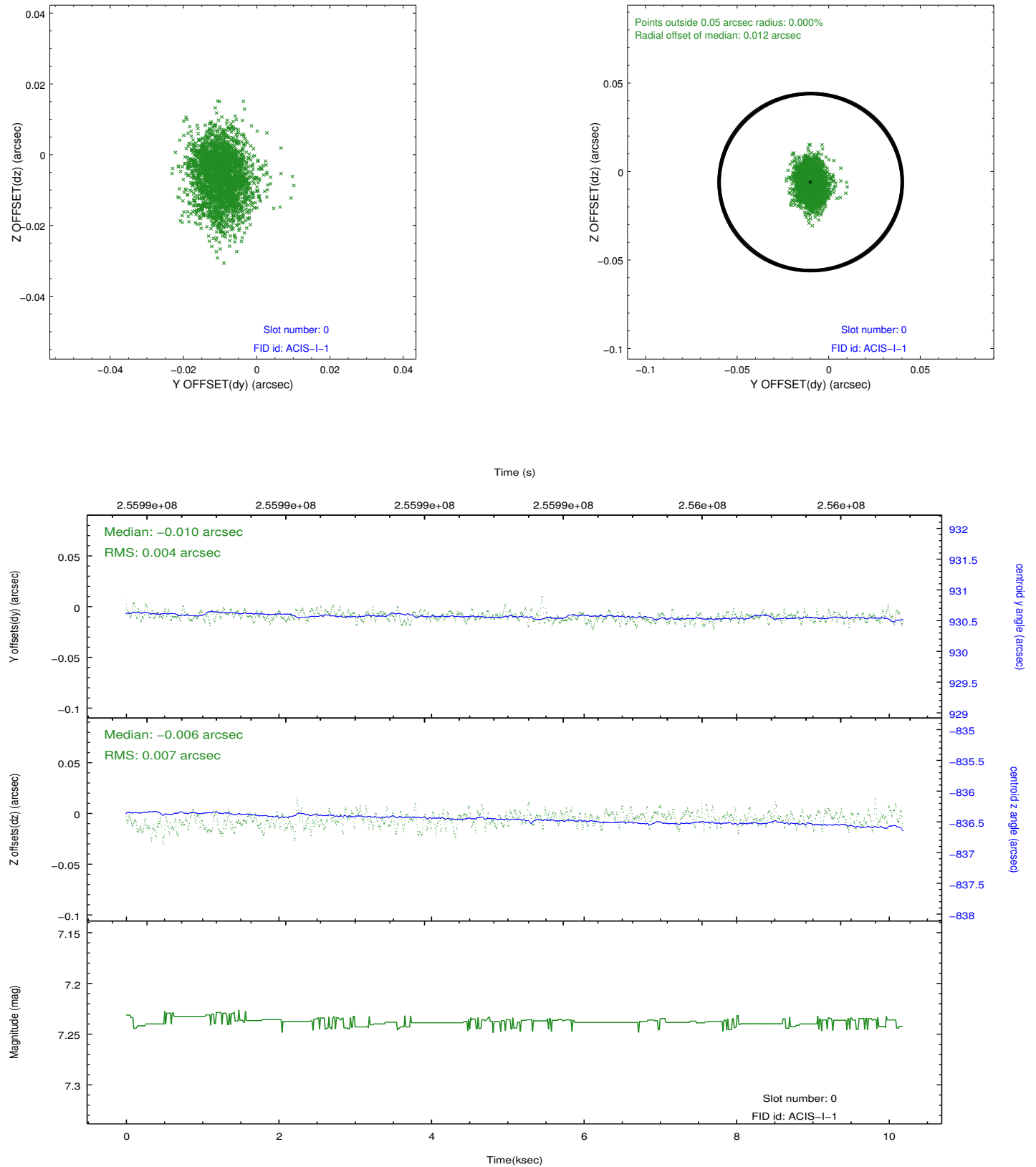


2.4.5 Slot 7

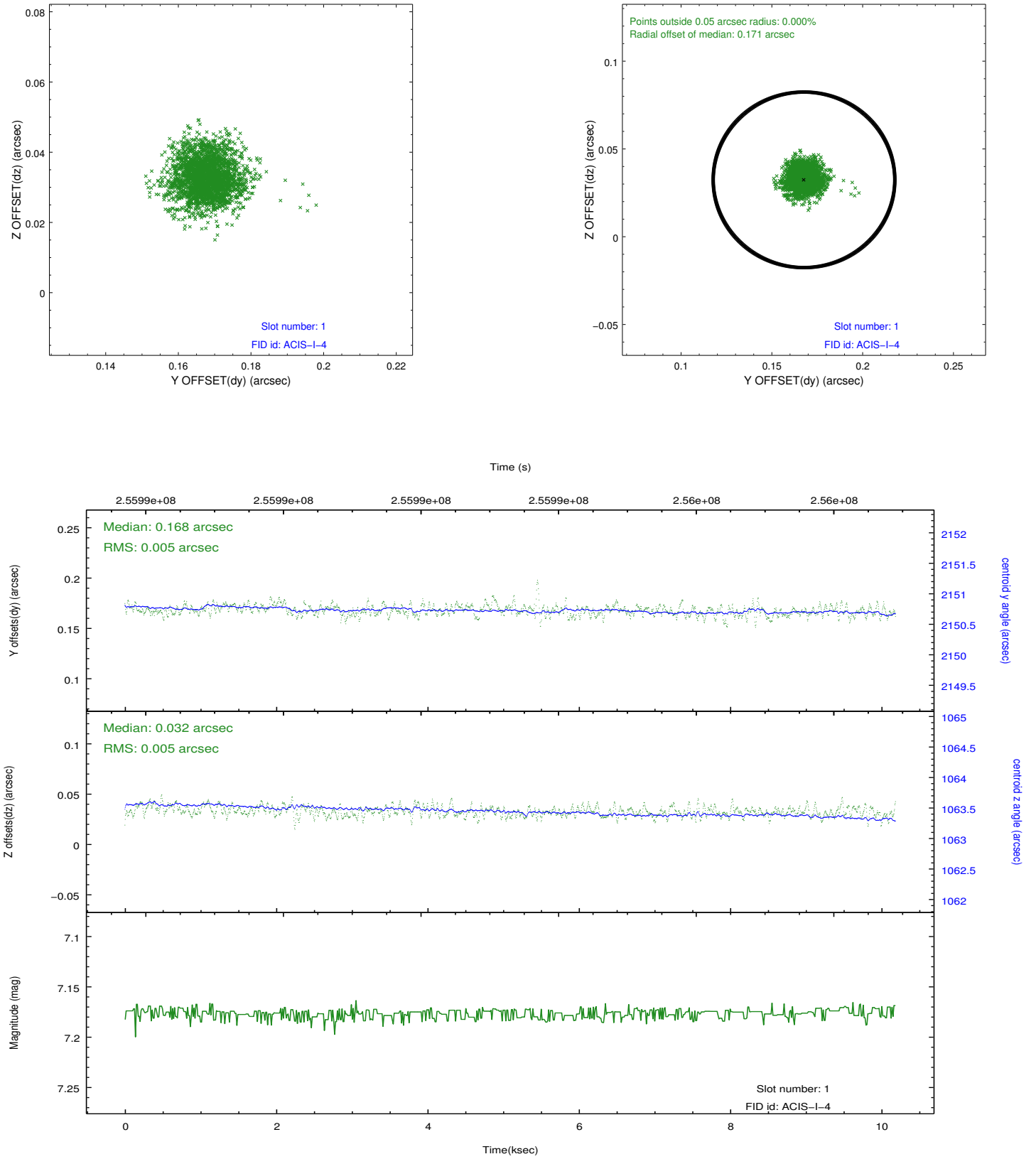


2.5 FID Slots

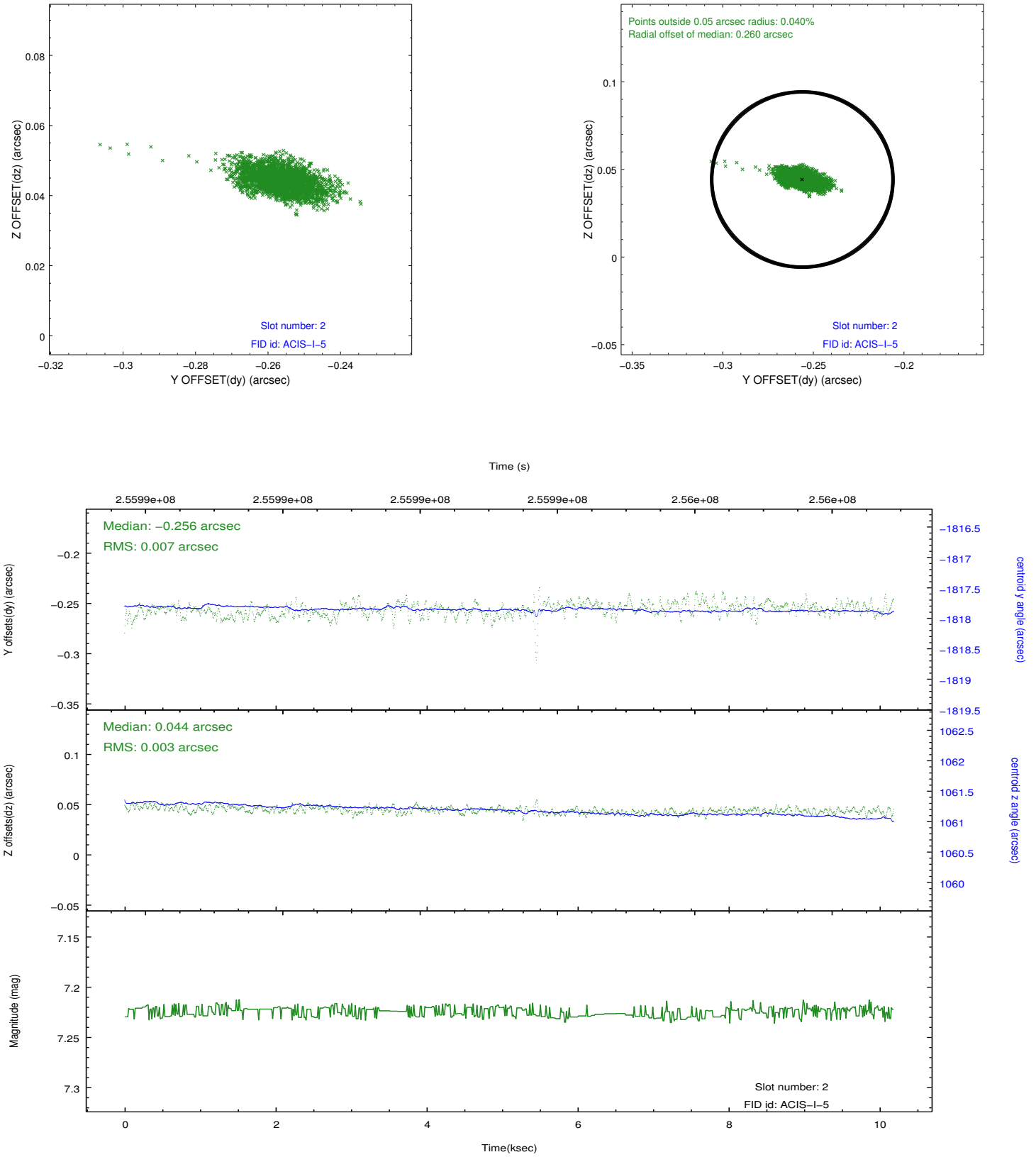
2.5.1 Slot 0



2.5.2 Slot 1



2.5.3 Slot 2



A Summary

A.1 Status

V&V Scientist	Jen Lauer
V&V Date (YYYY-MM-DD)	2012.03.27
V&V Edition	1
V&V Disposition and Status	OK
V&V Charge Time	9.75359996

A.2 Comments