

V&V Reference Report

L2 ASCDS Version : 8.5.1.1

Observation 5437 - L2 Version 3
Chandra X-Ray Center

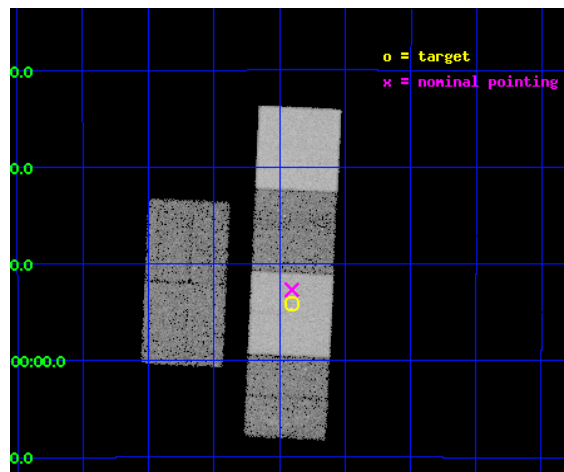
L2 Processing Date : Dec 23 2012

Contents

1	Front	2
2	OBI	3
2.1	OBI	3
2.1.1	Images	3
2.1.2	Bias	3
2.1.3	Parameters	4
2.1.4	Events	4
2.2	Compared Parameters	5
2.3	Aspect	6
2.4	Star Slots	9
2.4.1	Slot 3	9
2.4.2	Slot 4	10
2.4.3	Slot 5	11
2.4.4	Slot 6	12
2.4.5	Slot 7	13
2.5	FID Slots	14
2.5.1	Slot 0	14
2.5.2	Slot 1	15
2.5.3	Slot 2	16
A	Summary	17
A.1	Status	17
A.2	Comments	17

1 Front

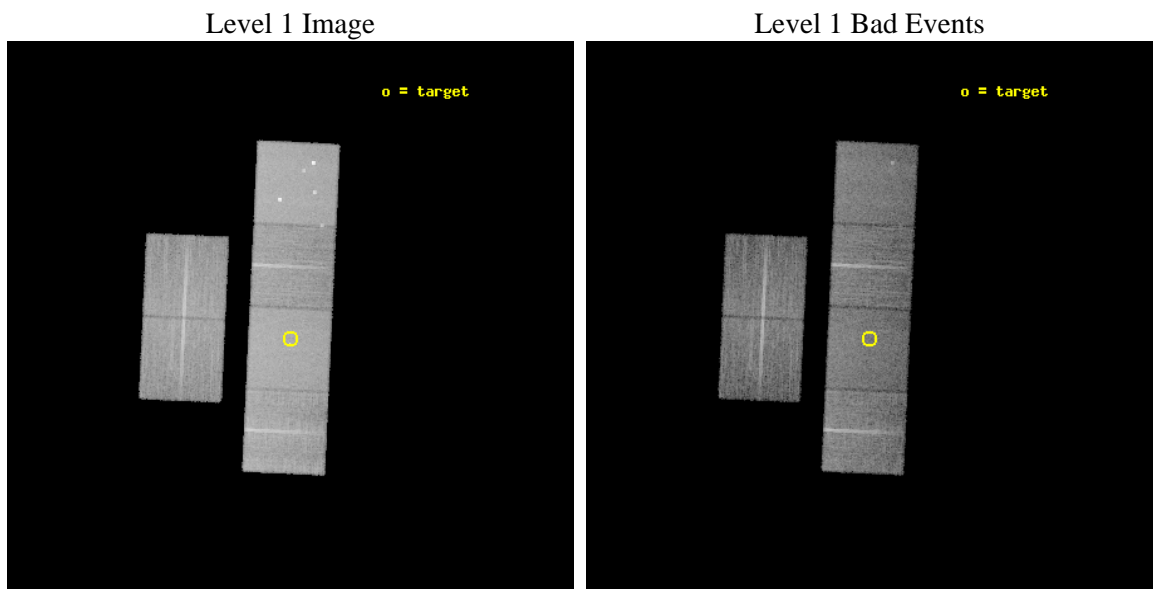
seq_num	300153	Sequence number
obs_id	5437	Observation id
title	A Uniform Study of Globular Cluster X-ray Sources: the Keys to Cluster Dynamical Evolution	Proposal title
observer	Prof. Walter Lewin	Principal investigator
object	NGC 6656	Source name
dtcycle	0	
cycle	P	events from which exps? Prim/Second/Both
ra_targ	279.100833	Observer's specified target RA [deg]
dec_targ	-23.903333	Observer's specified target Dec [deg]
ra_nom	279.10144648427	Nominal RA [deg]
dec_nom	-23.878410360723	Nominal Dec [deg]
roll_nom	92.649628376846	Nominal Roll [deg]
revision	3	Processing version of data
ontime	16021.778783619	Sum of GTIs [s]
livetime	15818.901373504	Livetime [s]
ontime2	16021.819823623	Sum of GTIs [s]
ontime3	16021.65566361	Sum of GTIs [s]
ontime5	16021.737743616	Sum of GTIs [s]
ontime6	16021.696703613	Sum of GTIs [s]
ontime7	16021.778783619	Sum of GTIs [s]
ontime8	16021.614623636	Sum of GTIs [s]
l2events	200334	Number of level 2 events



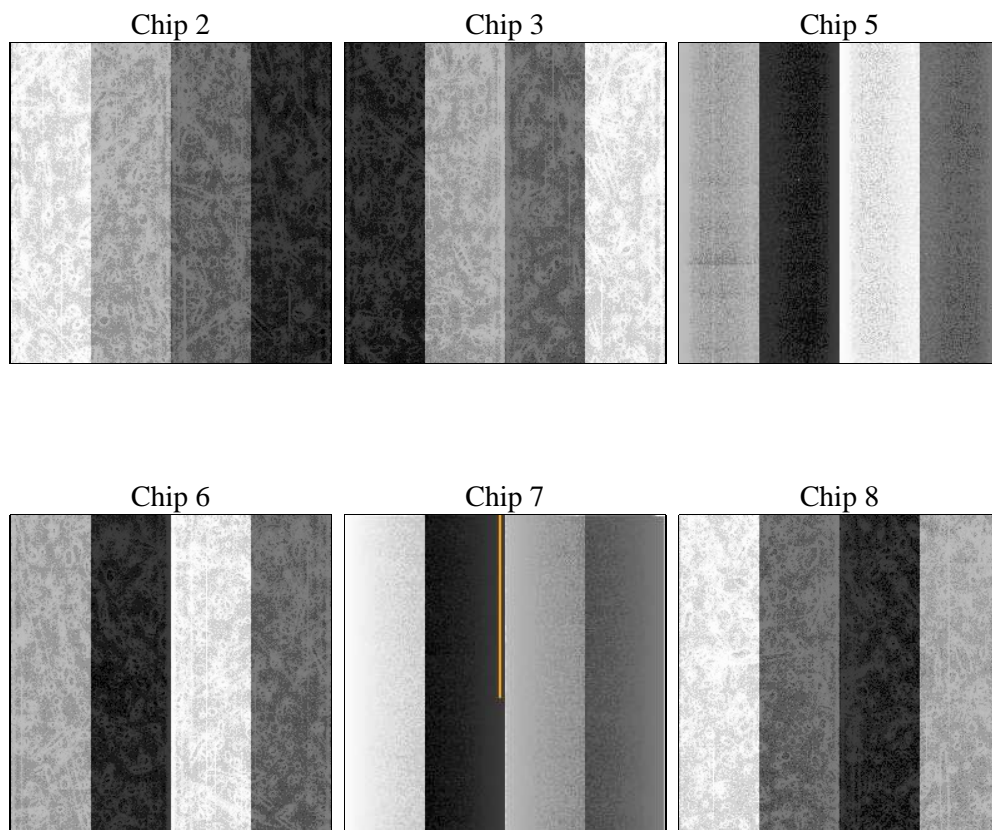
2 OBI

2.1 OBI

2.1.1 Images



2.1.2 Bias



2.1.3 Parameters

obi_num	0	Obi number	sched_exp_time	16000.000000	[s] Scheduled observation exposure time
ascdsver	8.5.1.1	Processing system revision	ontime	16021.778783619	Sum of GTIs [s]
caldsver	4.5.5	 	ontime2	16021.819823623	Sum of GTIs [s]
date	2012-12-23T18:21:33	Date and time of file creation	ontime3	16021.65566361	Sum of GTIs [s]
revision	3	Processing version of data	ontime5	16021.737743616	Sum of GTIs [s]
			ontime6	16021.696703613	Sum of GTIs [s]
			ontime7	16021.778783619	Sum of GTIs [s]
			ontime8	16021.614623636	Sum of GTIs [s]
			l1events	859146	Number of level 1 events

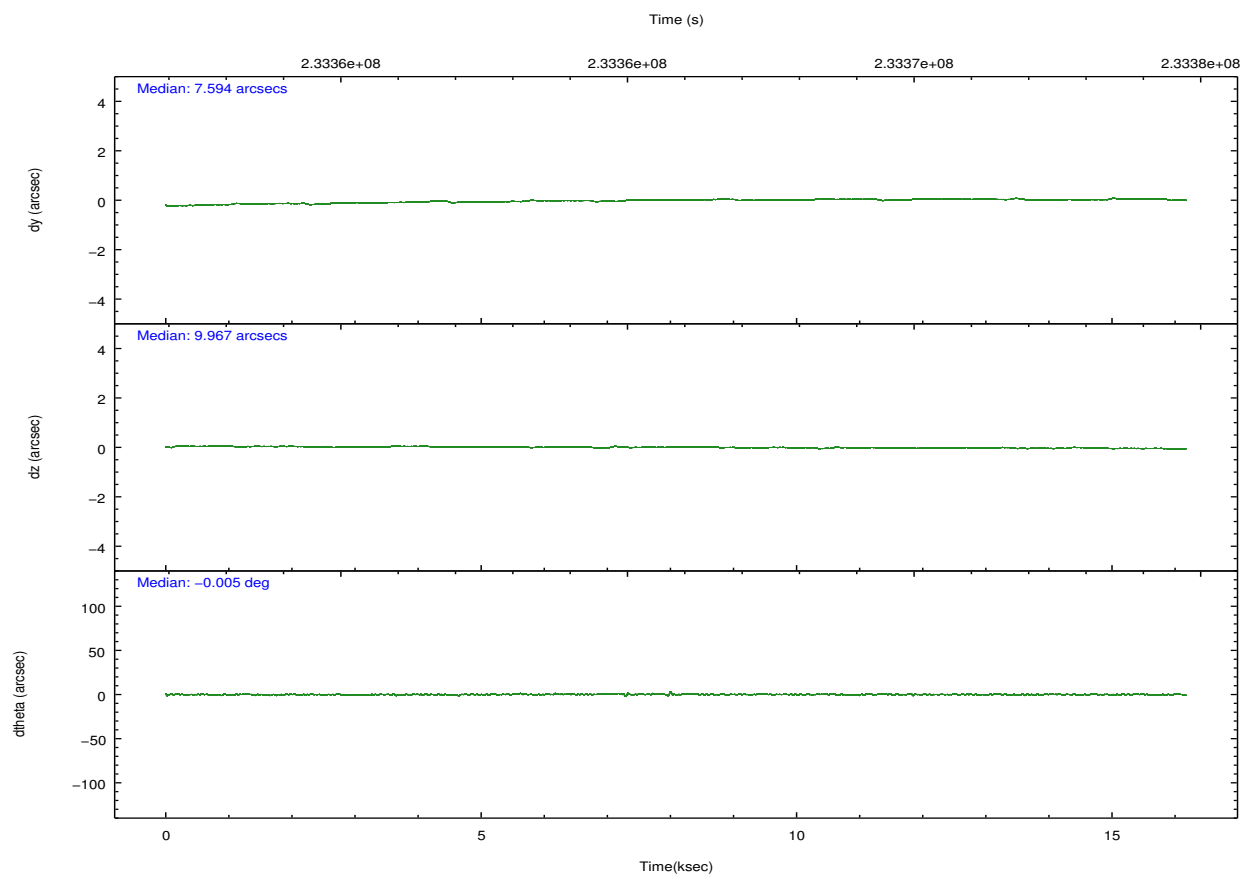
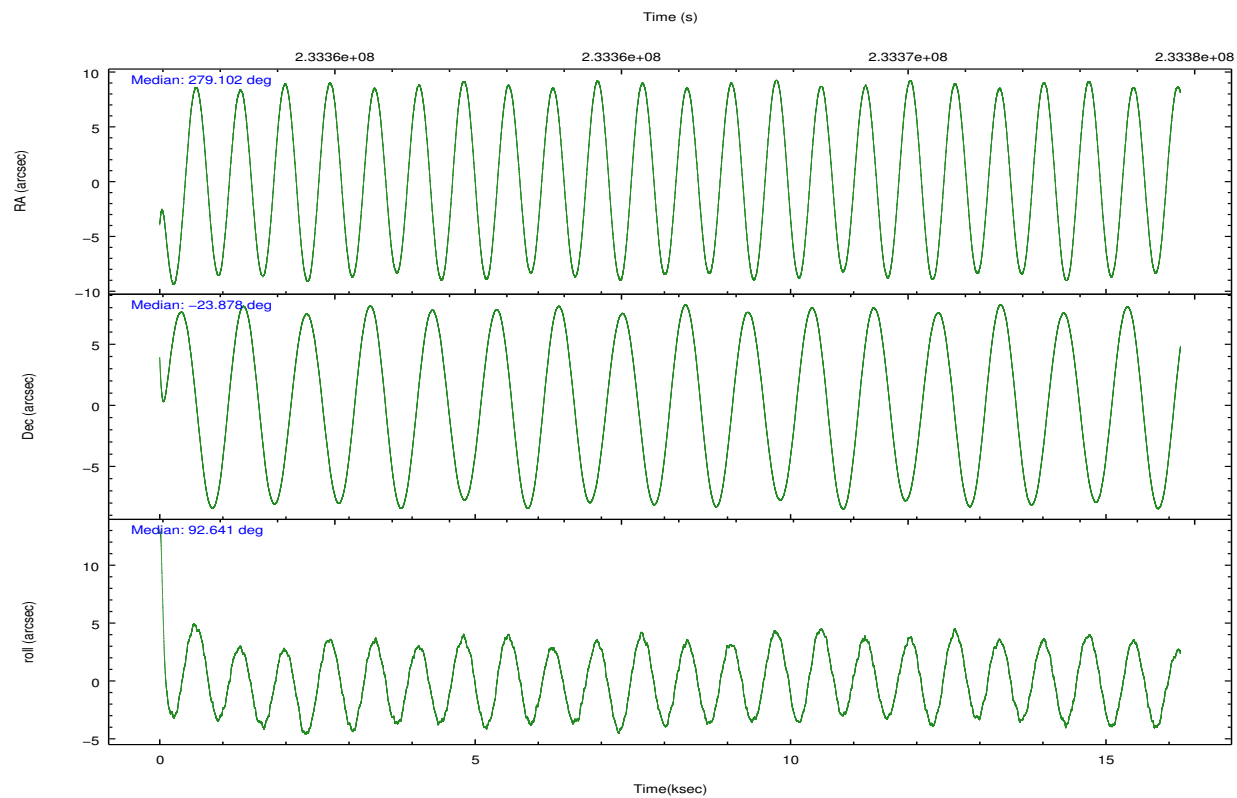
2.1.4 Events

	ccd 2	ccd 3	ccd 5	ccd 6	ccd 7	ccd 8		ccd 2	ccd 3	ccd 5	ccd 6	ccd 7	ccd 8
level 1 events	118952	115490	186923	119977	165772	152032	grade 0 events	6774	6921	13032	6724	6890	11426
rejected events	104429	100547	98076	104293	96202	118332		5%	5%	6%	5%	4%	7%
rejected %	87%	87%	52%	86%	58%	77%	grade 1 events	88	73	658	60	161	103
								0%	0%	0%	0%	0%	0%
							grade 2 events	2903	2779	25667	3116	14116	7209
								2%	2%	13%	2%	8%	4%
							grade 3 events	1306	1348	3328	1454	6192	3420
								1%	1%	1%	1%	3%	2%
							grade 4 events	1242	1415	3177	1395	6188	3192
								1%	1%	1%	1%	3%	2%
							grade 5 events	4756	5271	13206	5509	15769	7333
								3%	4%	7%	4%	9%	4%
							grade 6 events	2306	2486	43671	3001	36206	8460
								1%	2%	23%	2%	21%	5%
							grade 7 events	99577	95197	84184	98718	80250	110889
								83%	82%	45%	82%	48%	72%

2.2 Compared Parameters

Parameter	Planned	Actual	Parameter	Planned	Actual
Instrument	ACIS	ACIS	Obspar format version number	7	7
Detector	ACIS-235678	ACIS-235678	Obspar file type	PREDICTED	ACTUAL
Grating	NONE	NONE	Obspar update status	NONE	UPDATED
Data mode	FAINT	FAINT	Number of optional ACIS chips dropped	0	0
Observation mode	POINTING	POINTING	On-chip summing requested	N	N
[deg] Pointing RA	279.117885	279.1014464842734	Subarray requested	NONE	NONE
[deg] Pointing Dec	-23.901148	-23.87841036072279	Alternating exposures requested	N	N
[deg] Pointing Roll	92.499640	92.64962837684551	[s] Primary exposure time	0.000000	3.2
[mm] SIM focus pos	-0.684267	-0.6828225247311905			
[mm] SIM defocus	0	0.001444936568705701			
[mm] SIM translation stage pos	-190.132523	-190.1400660498719			
[mm] SIM translation stage offset	0	0.00754346686406393			
[s] Observation start time (MET)	233357941.184000	233356947.25062			
Observation start date	2005-05-24T21:37:57	2005-05-24T21:22:27			
[s] Observation end time (MET)	233373941.184000	233374360.97641			
Observation end date	2005-05-25T02:04:37	2005-05-25T02:12:40			
Read mode	TIMED	TIMED			

2.3 Aspect

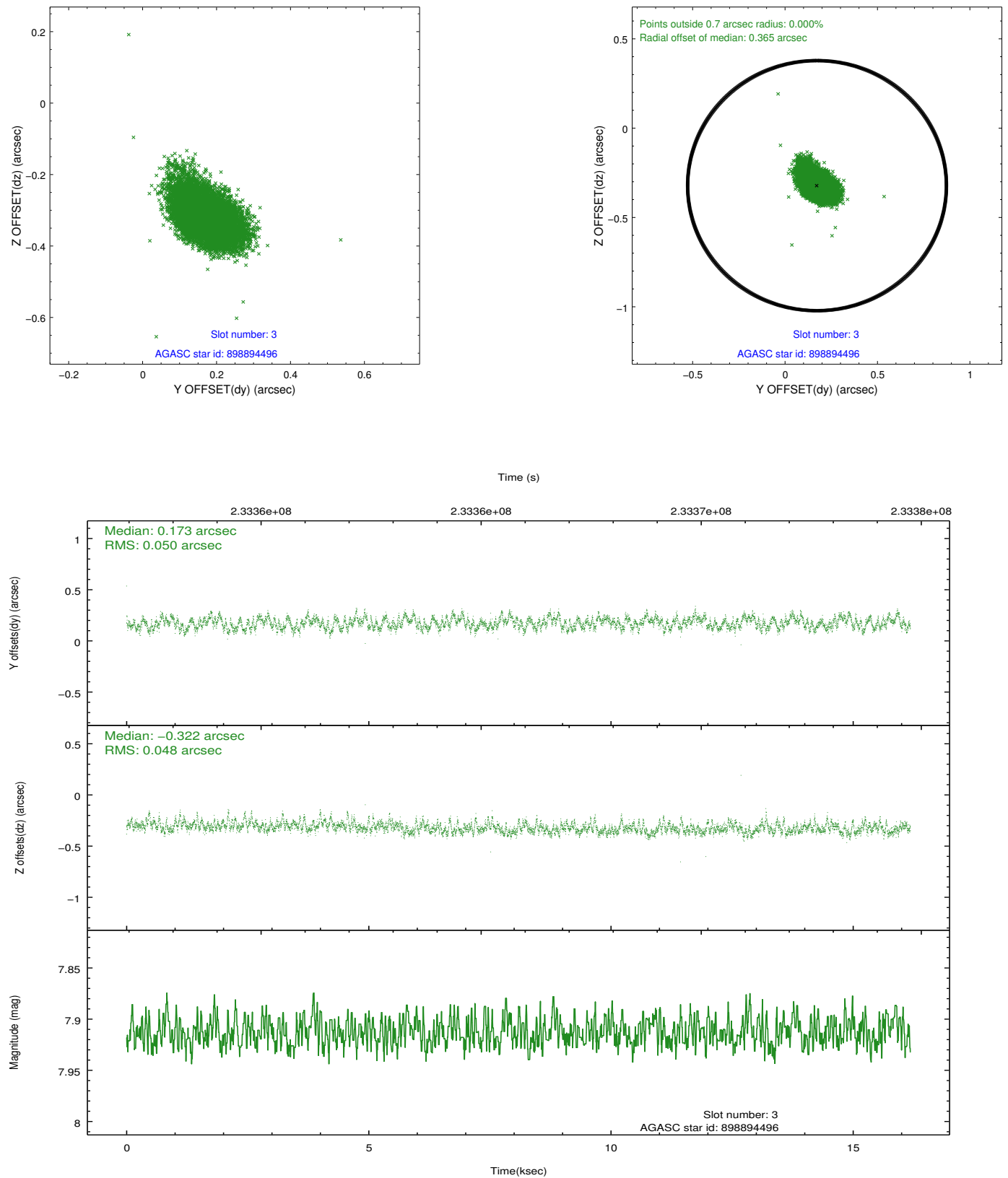


Slot Statistics

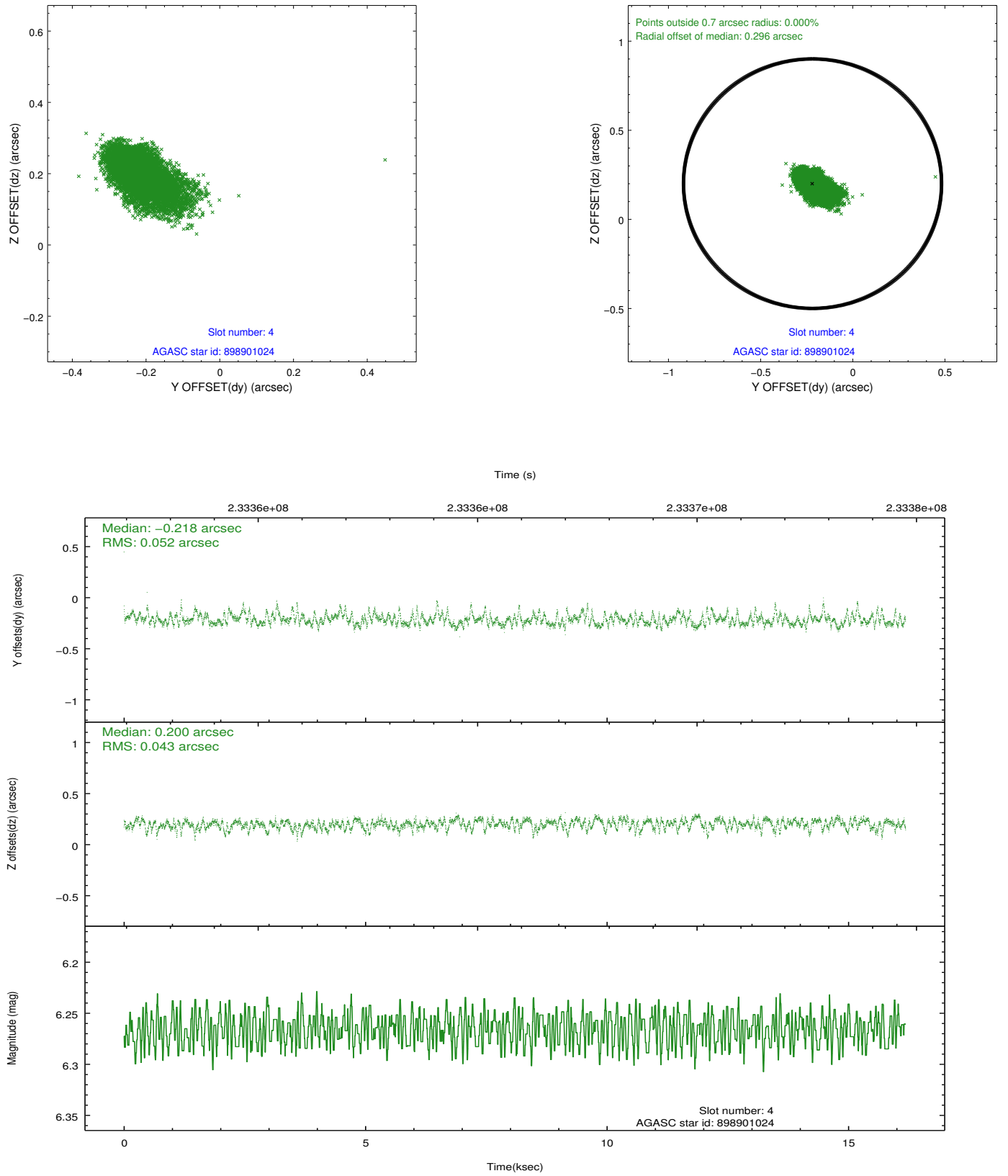
slot	status	id	mag	n_pts	med_dy	med_dz	dr1	dr2	ra	dec	mean_y	mean_z
0	FID	ACIS-S-2	7.10	3947	-0.062	-0.037	0.014	0.026	0.000000	0.000000	-760.36	-1731.26
1	FID	ACIS-S-4	7.21	3947	0.066	0.030	0.011	0.018	0.000000	0.000000	2152.89	177.06
2	FID	ACIS-S-6	7.35	3947	-0.031	0.017	0.009	0.016	0.000000	0.000000	401.96	814.72
3	GUIDE	898894496	7.91	7894	0.173	-0.322	0.072	0.120	278.448294	-24.123316	-708.32	2232.70
4	GUIDE	898901024	6.26	7895	-0.218	0.200	0.066	0.124	279.627976	-23.504894	1348.84	-1743.72
5	GUIDE	898912832	8.07	7895	-0.142	0.091	0.056	0.092	279.543010	-23.718911	592.63	-1428.32
6	GUIDE	898912936	8.19	7894	-0.084	0.186	0.076	0.120	279.459103	-23.396807	1763.82	-1205.04
7	GUIDE	899421408	8.21	7892	0.268	-0.152	0.065	0.108	279.031195	-24.436485	-1912.47	367.43

2.4 Star Slots

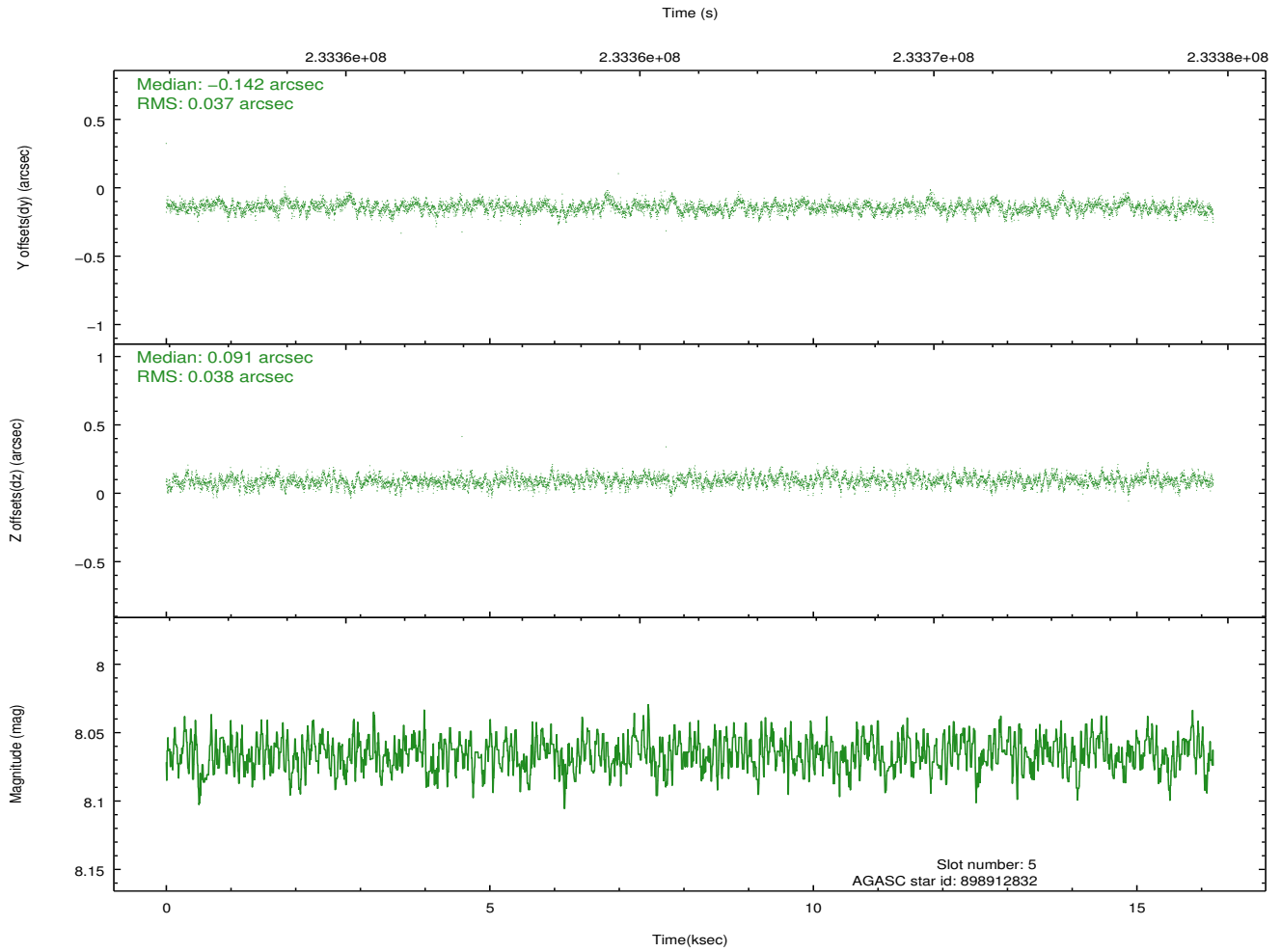
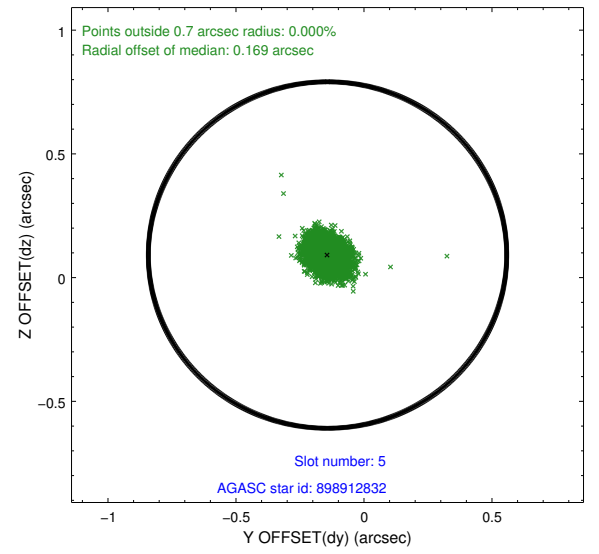
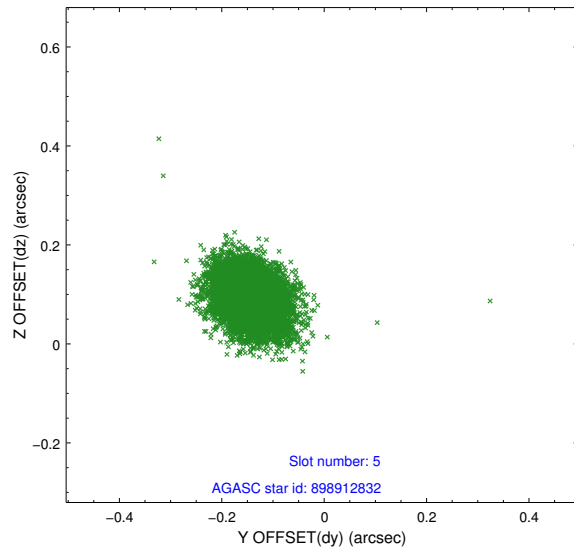
2.4.1 Slot 3



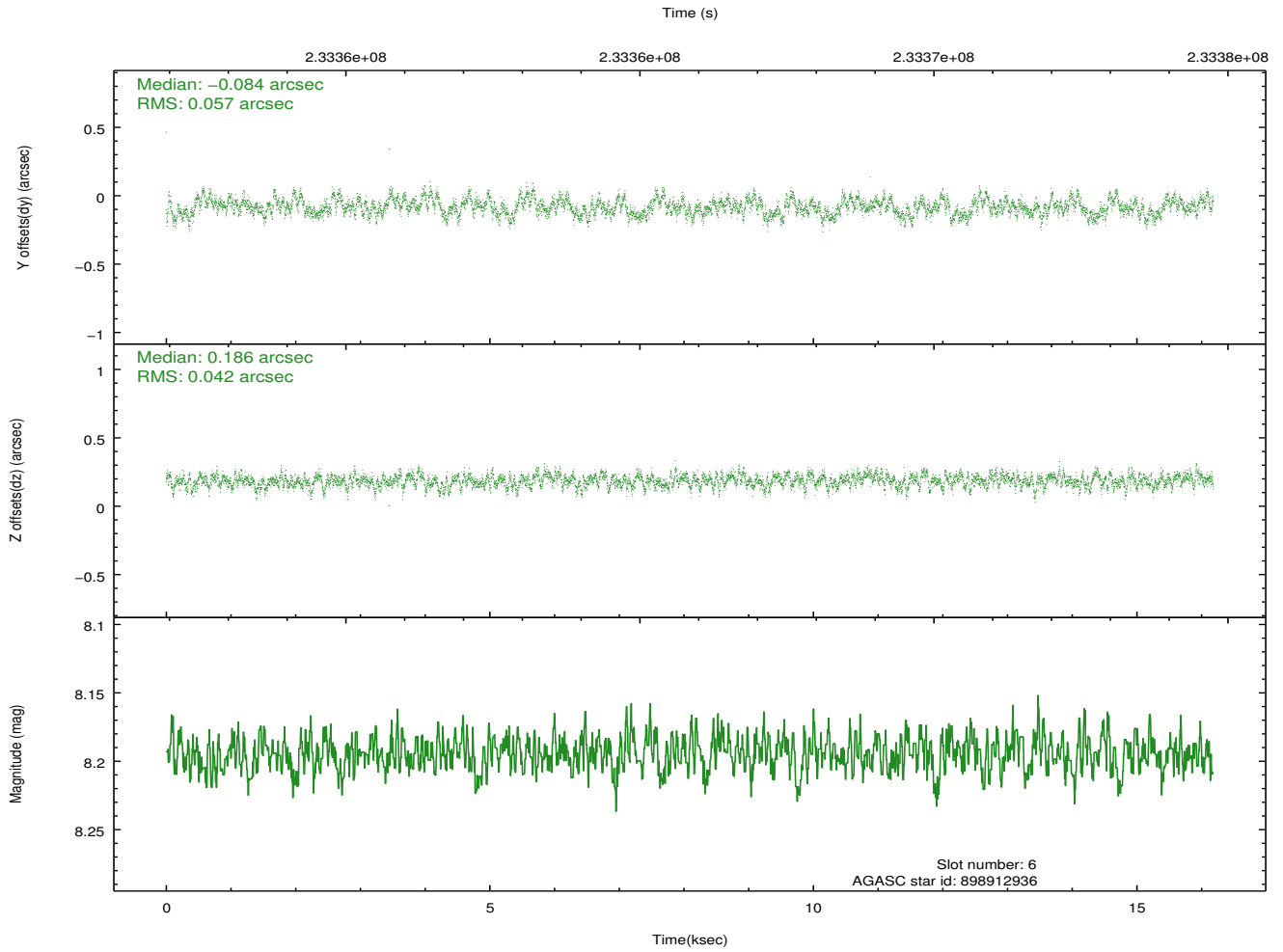
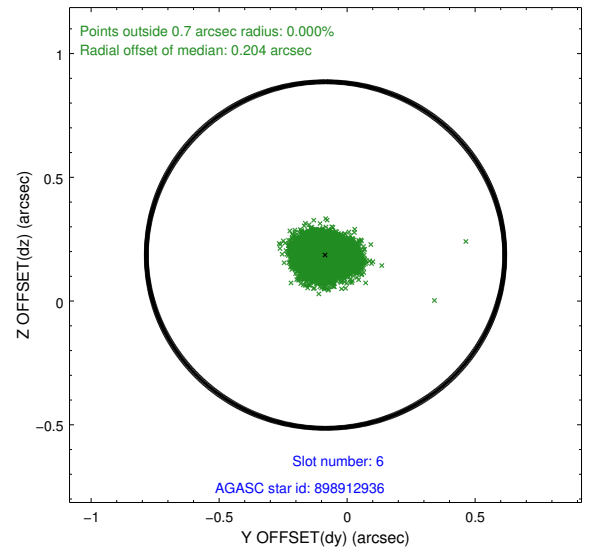
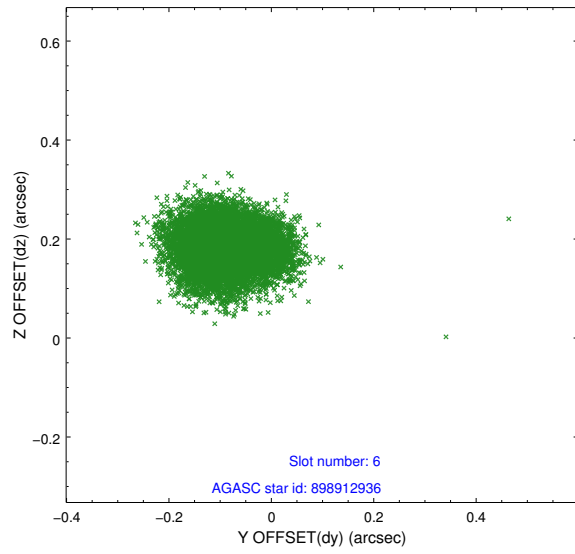
2.4.2 Slot 4



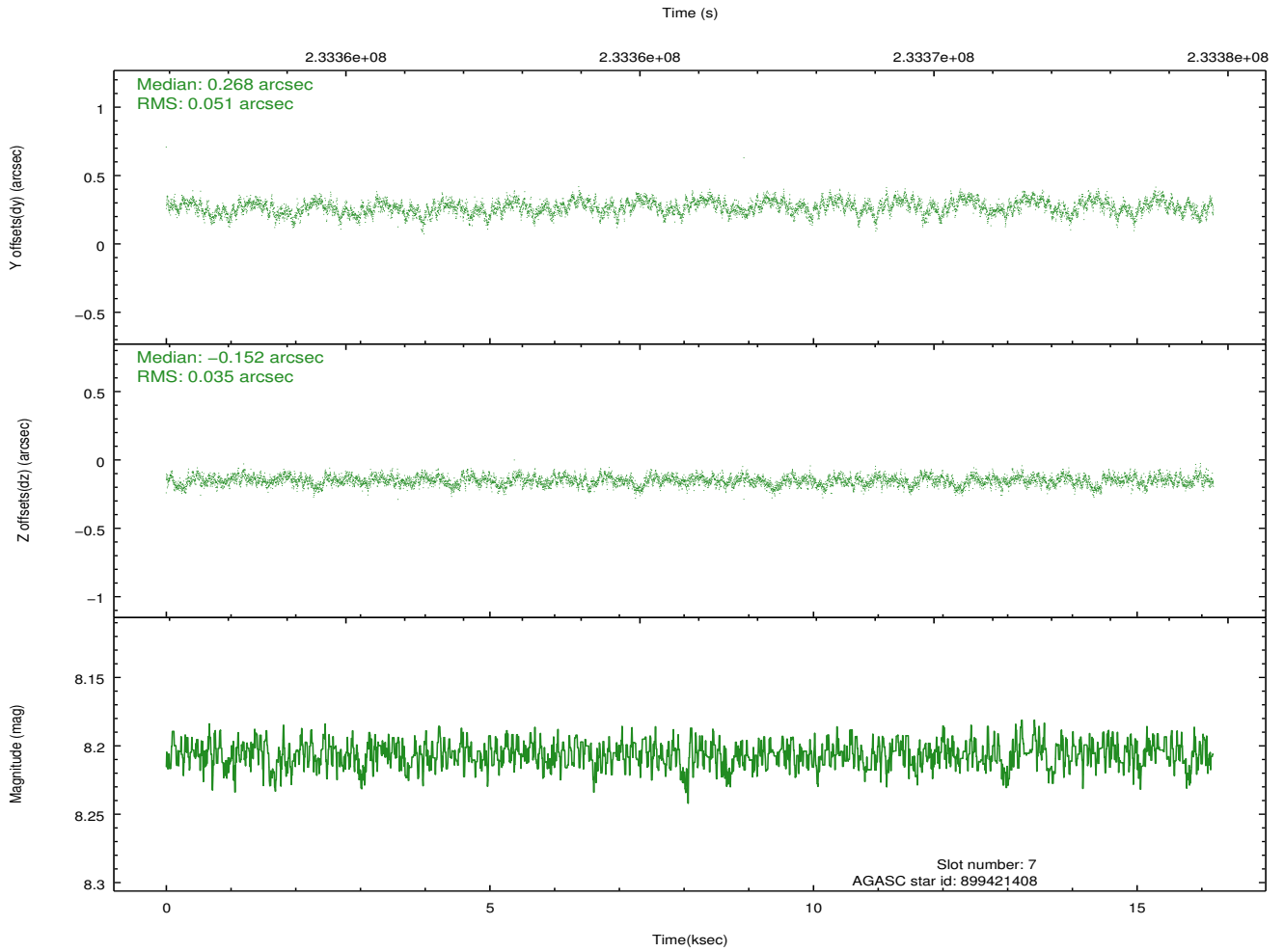
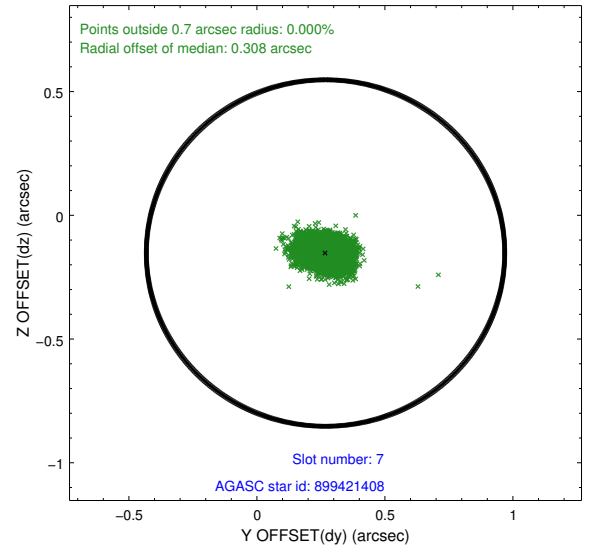
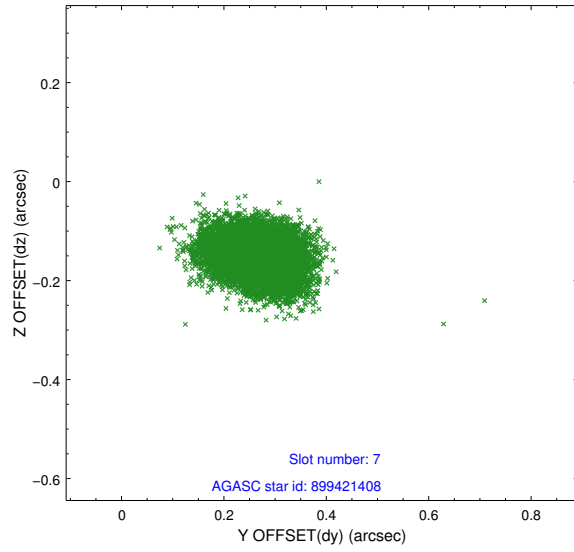
2.4.3 Slot 5



2.4.4 Slot 6

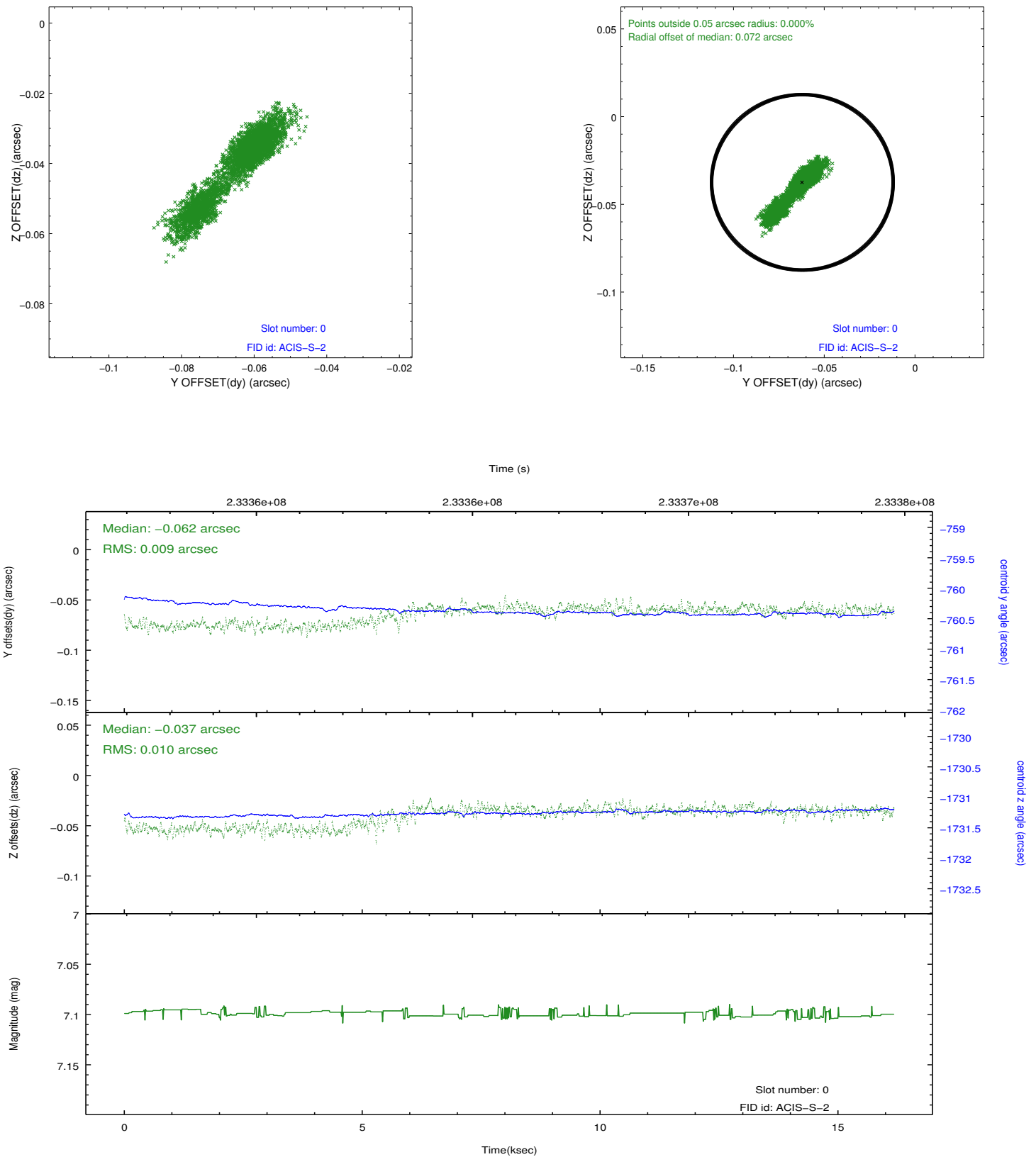


2.4.5 Slot 7

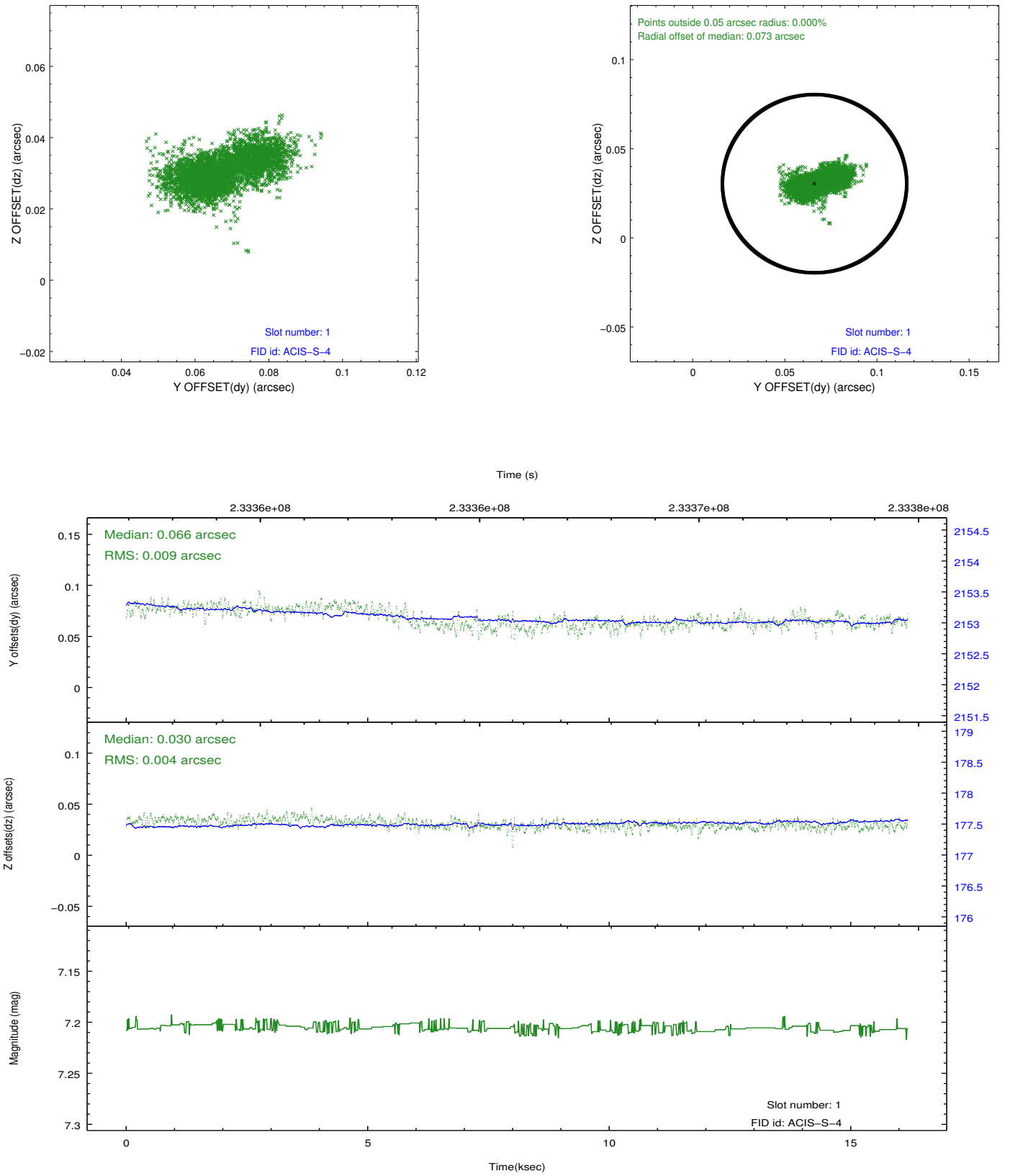


2.5 FID Slots

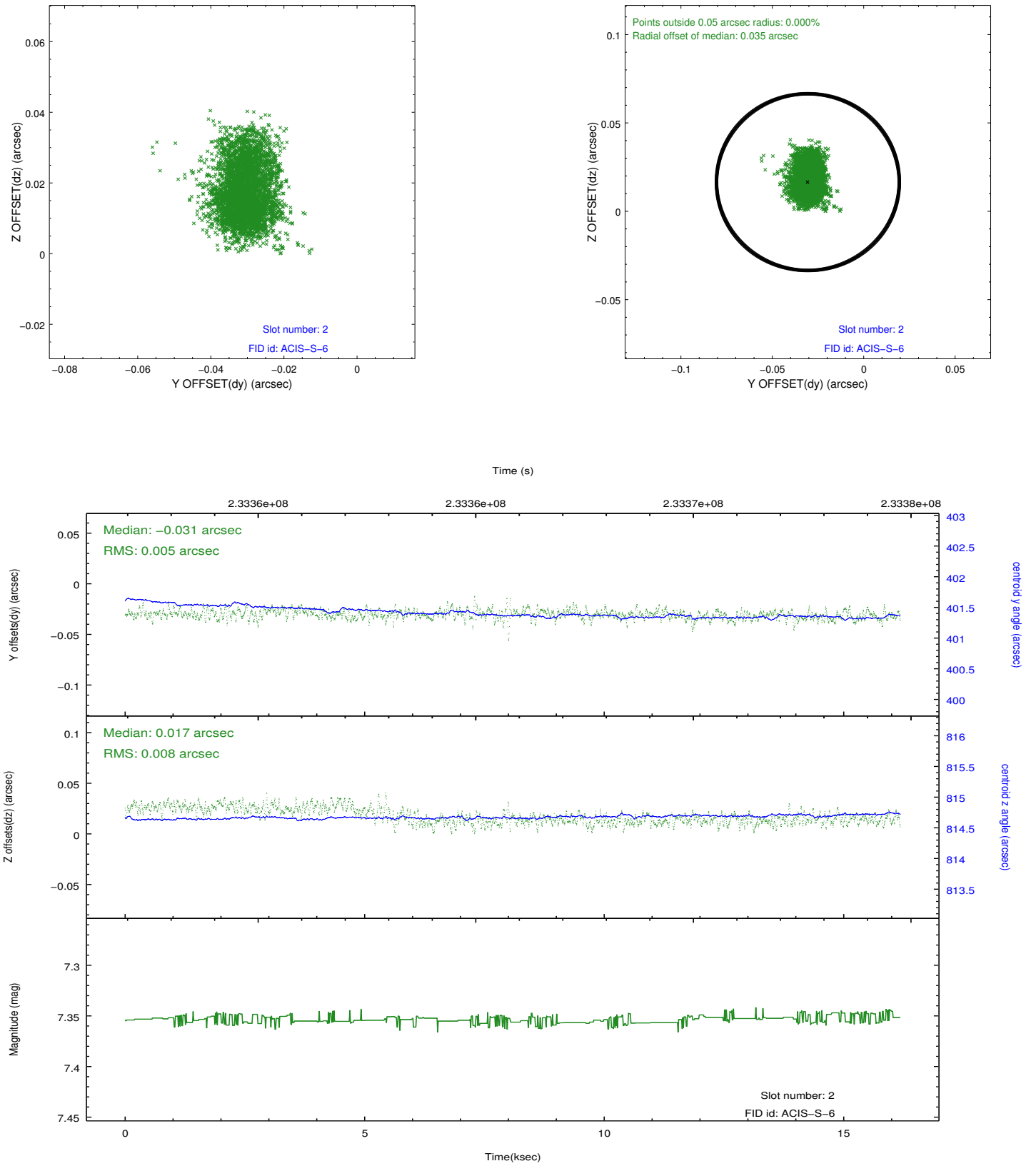
2.5.1 Slot 0



2.5.2 Slot 1



2.5.3 Slot 2



A Summary

A.1 Status

V&V Scientist	Jen Lauer
V&V Date (YYYY-MM-DD)	2013.01.16
V&V Edition	1
V&V Disposition and Status	OK
V&V Charge Time	16.02239

A.2 Comments

Joint Proposal: HST