

# V&V Reference Report

## L2 ASCDS Version : 7.6.7

Observation 5417 - L2 Version 002  
Chandra X-Ray Center

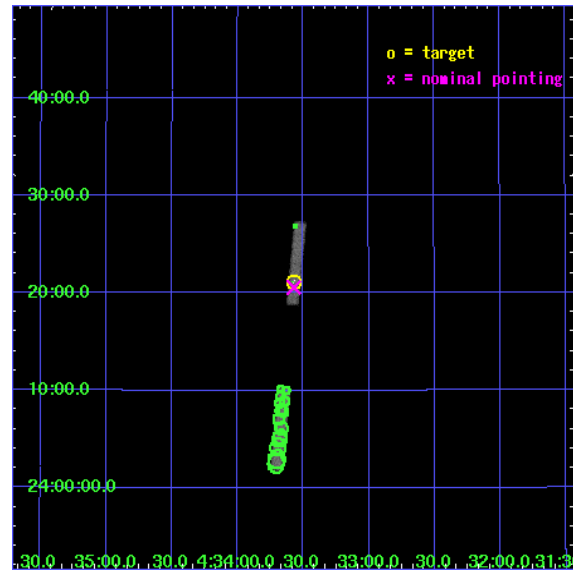
L2 Processing Date: Feb 15 2006

## Contents

<b>1</b>	<b>Front</b>	<b>2</b>
<b>2</b>	<b>OBI</b>	<b>3</b>
2.1	OBI . . . . .	3
2.1.1	Images . . . . .	3
2.1.2	Bias . . . . .	3
2.1.3	Parameters . . . . .	4
2.1.4	Events . . . . .	4
2.2	Compared Parameters . . . . .	5
2.3	Aspect . . . . .	6
2.4	Star Slots . . . . .	9
2.4.1	Slot 3 . . . . .	9
2.4.2	Slot 4 . . . . .	10
2.4.3	Slot 5 . . . . .	11
2.4.4	Slot 6 . . . . .	12
2.5	FID Slots . . . . .	13
2.5.1	Slot 0 . . . . .	13
2.5.2	Slot 1 . . . . .	14
2.5.3	Slot 2 . . . . .	15
<b>3</b>	<b>Point Sources</b>	<b>16</b>
<b>A</b>	<b>Summary</b>	<b>17</b>
A.1	Status . . . . .	17
A.2	Comments . . . . .	17

# 1 Front

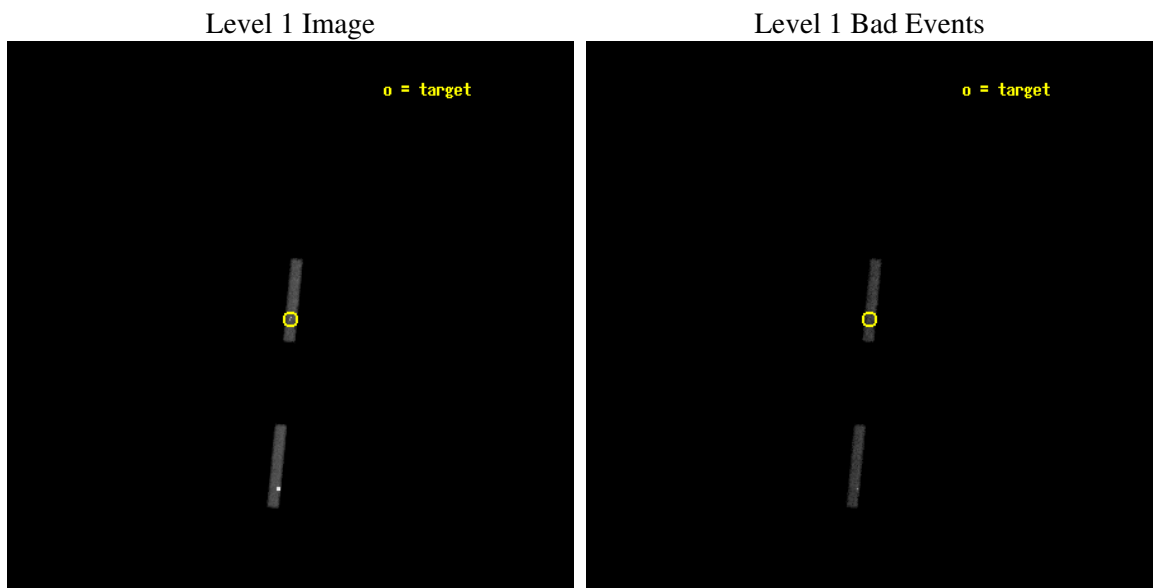
seq_num	200350
obs_id	5417
title	Untangling the Accretion Spots on Classical T Tauri Stars
observer	Dr. Andisheh Mahdavi
object	GK Tau
dtcycle	0
cycle	P
ra_targ	68.39375
dec_targ	24.3525
ra_nom	68.392887095393
dec_nom	24.342866495194
roll_nom	275.54324504246
revision	2
ontime	15227.0
livetime	14071.972497412
ontime5	15227.0
ontime7	15227.0
l2events	18518



## 2 OBI

### 2.1 OBI

#### 2.1.1 Images



#### 2.1.2 Bias

Chip 5

Chip 7



### 2.1.3 Parameters

obi_num	0
ascdsver	7.6.7
caldbver	3.2.1
date	2006-02-16T01:47:47
revision	2

sched_exp_time	15200.000000
ontime	15606.144813538
ontime5	15606.144823432
ontime7	15606.144813538
l1events	69717

### 2.1.4 Events

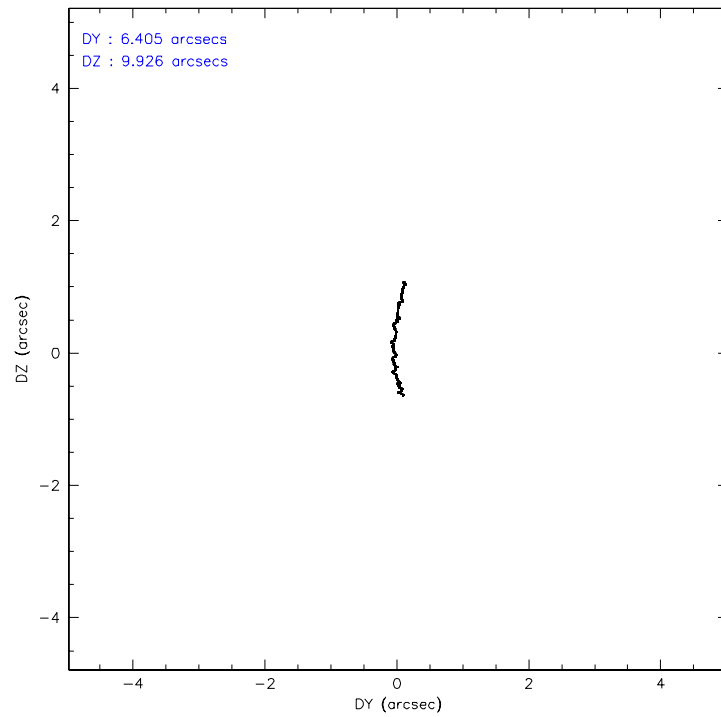
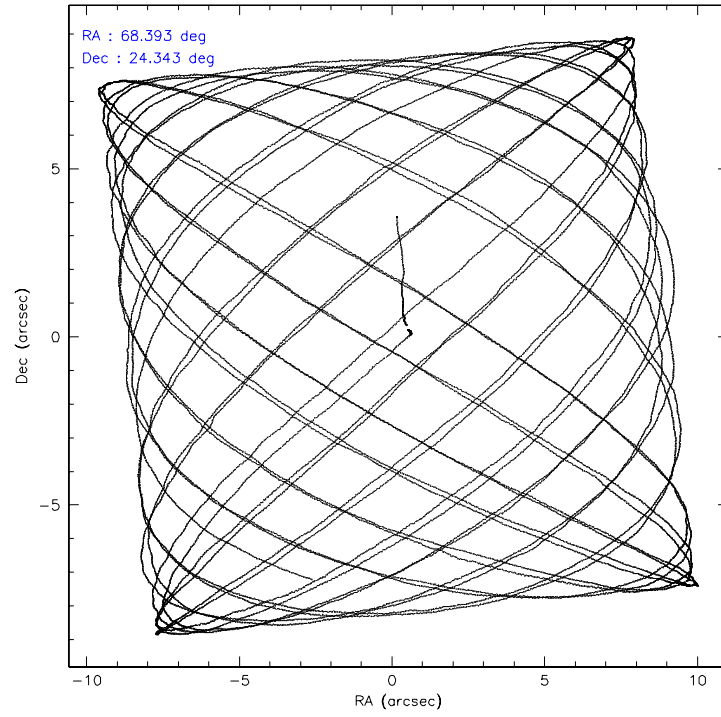
	ccd 5	ccd 7
level 1 events	48284	21433
rejected events	11715	11505
rejected %	24%	53%

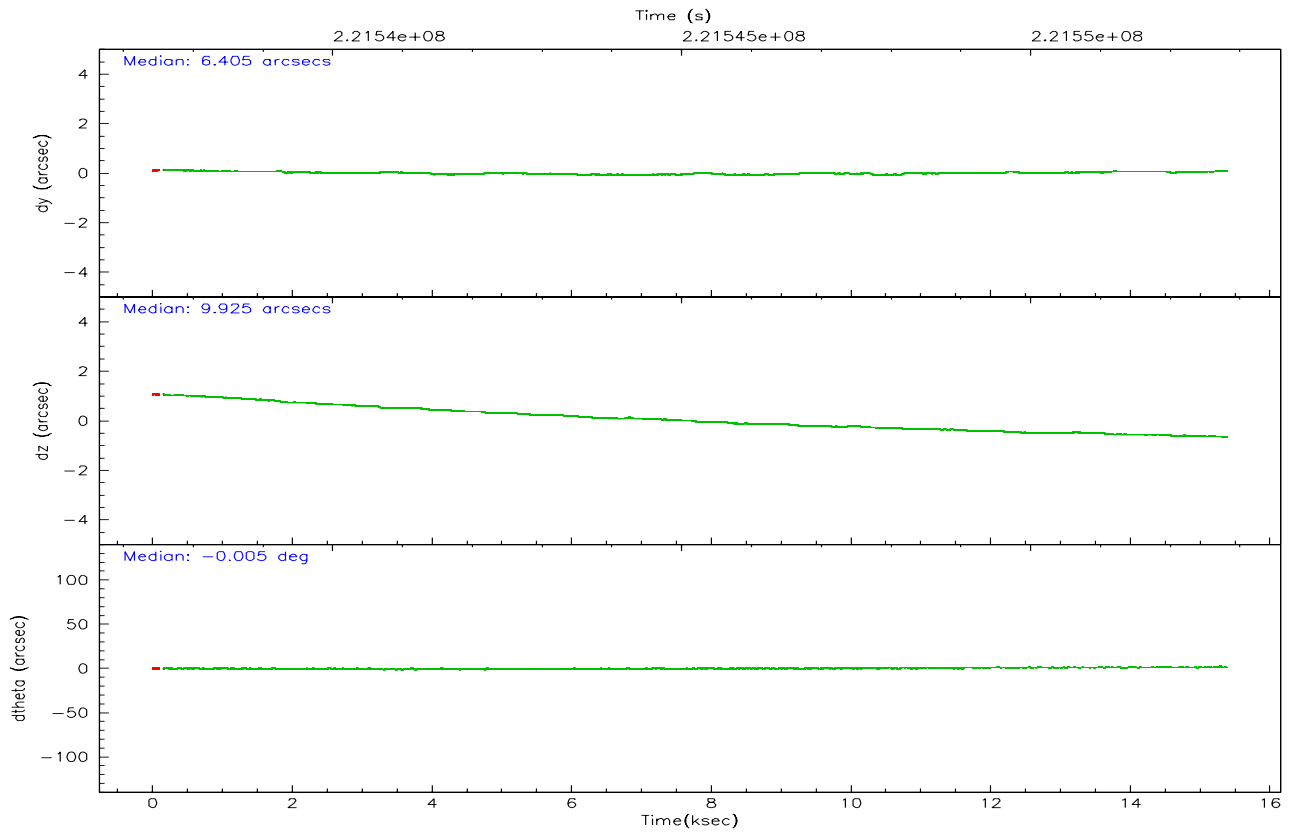
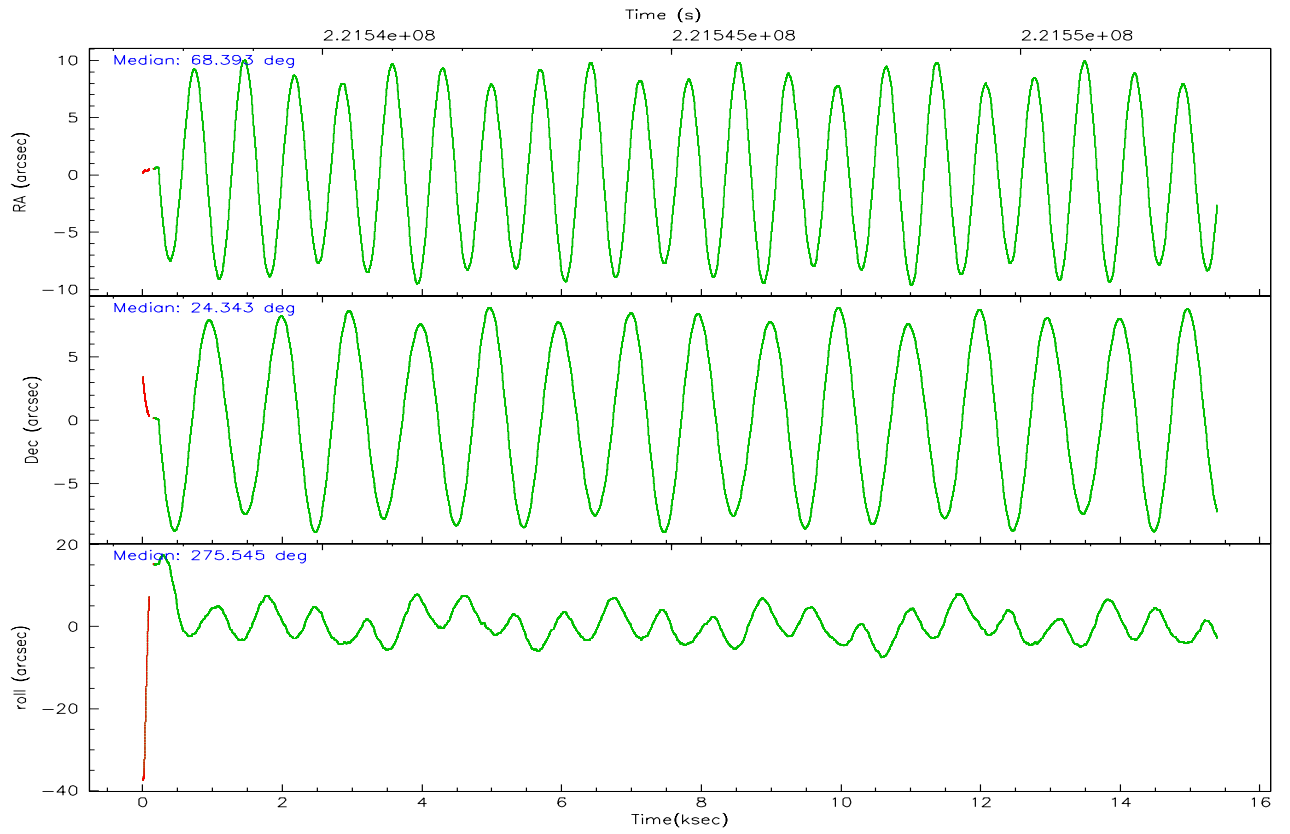
	ccd 5	ccd 7
grade 0 events	14646	1168
	30%	5%
grade 1 events	77	27
	0%	0%
grade 2 events	15991	2435
	33%	11%
grade 3 events	521	1009
	1%	4%
grade 4 events	845	922
	1%	4%
grade 5 events	1082	1361
	2%	6%
grade 6 events	5471	4628
	11%	21%
grade 7 events	9651	9883
	19%	46%

## 2.2 Compared Parameters

Parameter	Planned	Actual	Parameter	Planned	Actual
Instrument	ACIS	ACIS	Obspar format version number	6	6
Detector	ACIS-57	ACIS-57	Obspar file type	PREDICTED	ACTUAL
Grating	NONE	NONE	Obspar update status	NONE	UPDATED
Data mode	FAINT	FAINT	On-chip summing requested	N	N
Observation mode	POINTING	POINTING	Subarray requested	1/8	1/8
Pointing RA	68.375199	68.39288709539298	Subarray start row	0	449
Pointing Dec	24.364800	24.34286649519392	Subarray row count	1024	128
Pointing Roll	275.393953	275.5432450424584	Alternating exposures requested	N	N
SIM focus pos (mm)	-0.684267	-0.6828225247311905	Primary exposure time	0.000000	0.5
SIM defocus (mm)	0	0.001444936568705701			
SIM translation stage pos (mm)	-190.132523	-190.1400660498719			
SIM translation stage offset (mm)	0	0.00754346686406393			
Observation start time	221537612.184000	221536840.95209			
Observation start date	2005-01-08T02:12:28	2005-01-08T02:00:40			
Observation end time	221552812.184000	221553413.66534			
Observation end date	2005-01-08T06:25:48	2005-01-08T06:36:53			
Read mode	TIMED	TIMED			

## 2.3 Aspect





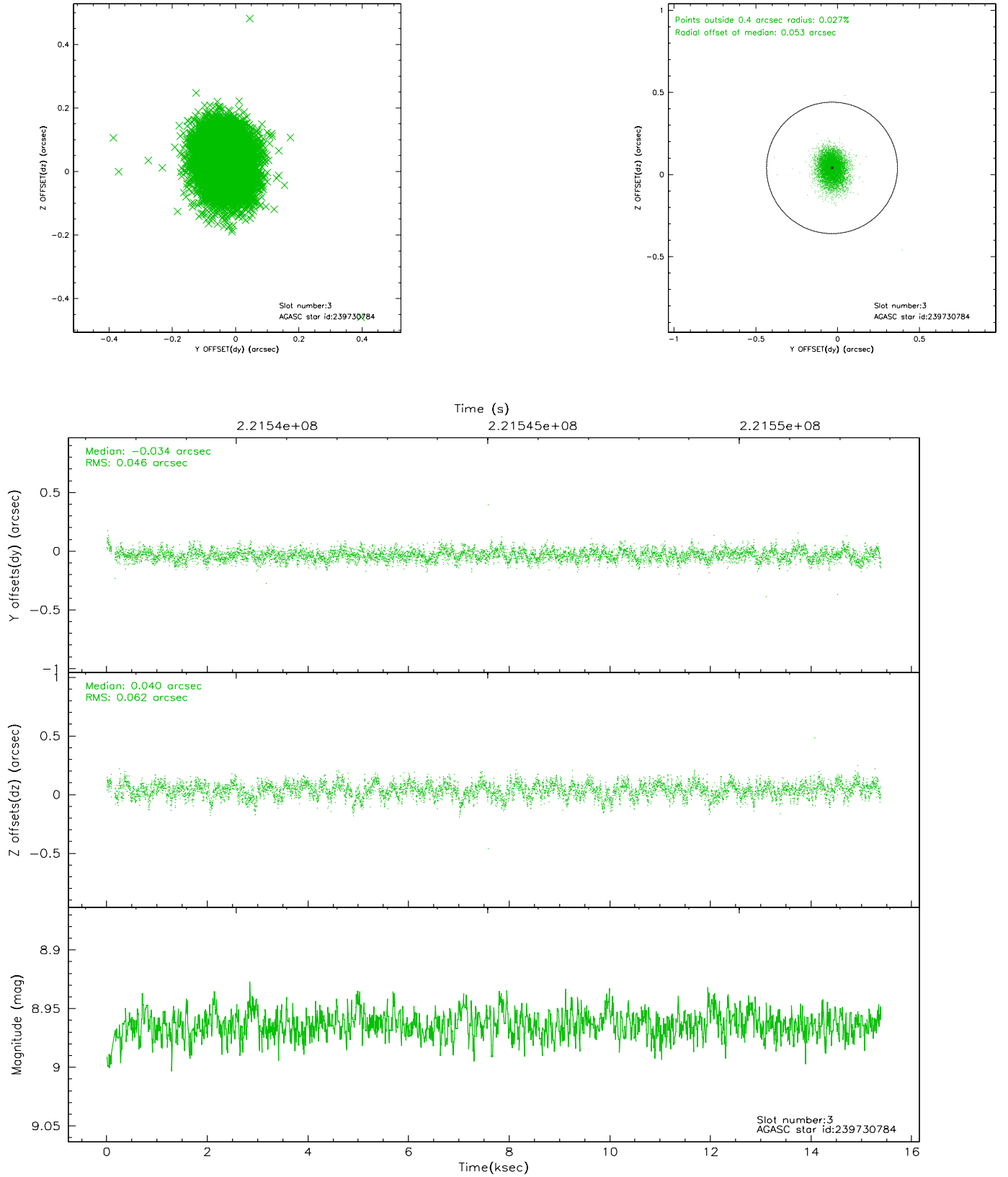
### Slot Statistics

slot	status	id	mag	n_pts	med_dy	med_dz	dr1	dr2	ra	dec	mean_y	mean_z
0	FID	ACIS-S-2	7.10	3737	-0.053	-0.014	0.012	0.020	0.000000	0.000000	-759.17	-1731.27
1	FID	ACIS-S-4	7.21	3737	0.061	0.030	0.006	0.013	0.000000	0.000000	2154.06	177.01
2	FID	ACIS-S-5	7.23	3736	-0.038	-0.007	0.012	0.018	0.000000	0.000000	-1811.65	170.91
3	GUIDE	239730784	8.96	7471	-0.034	0.040	0.081	0.133	68.709044	24.244524	532.93	1050.82
4	GUIDE	239733576	9.32	7471	0.119	0.048	0.097	0.157	68.994910	23.821766	2134.09	1848.94
5	GUIDE	240255024	9.20	7466	-0.010	-0.111	0.091	0.148	68.465897	24.501998	-463.25	342.71
6	GUIDE	240263016	8.65	7474	-0.074	0.027	0.063	0.105	68.575597	24.979042	-2140.56	859.41
7	MONITOR		0.00	0	0.000	0.000	0.000	0.000	0.000000	0.000000	0.00	0.00

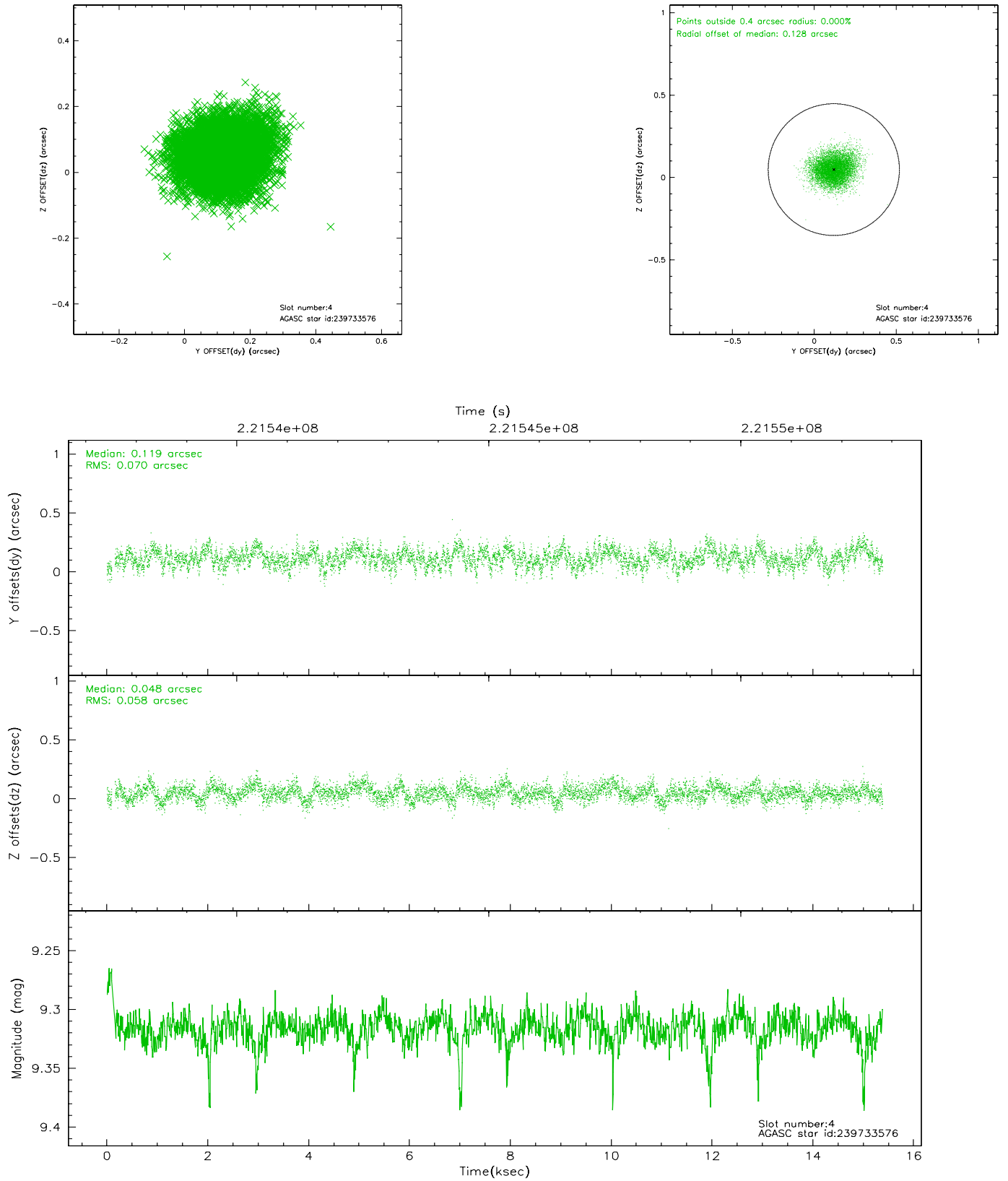


## 2.4 Star Slots

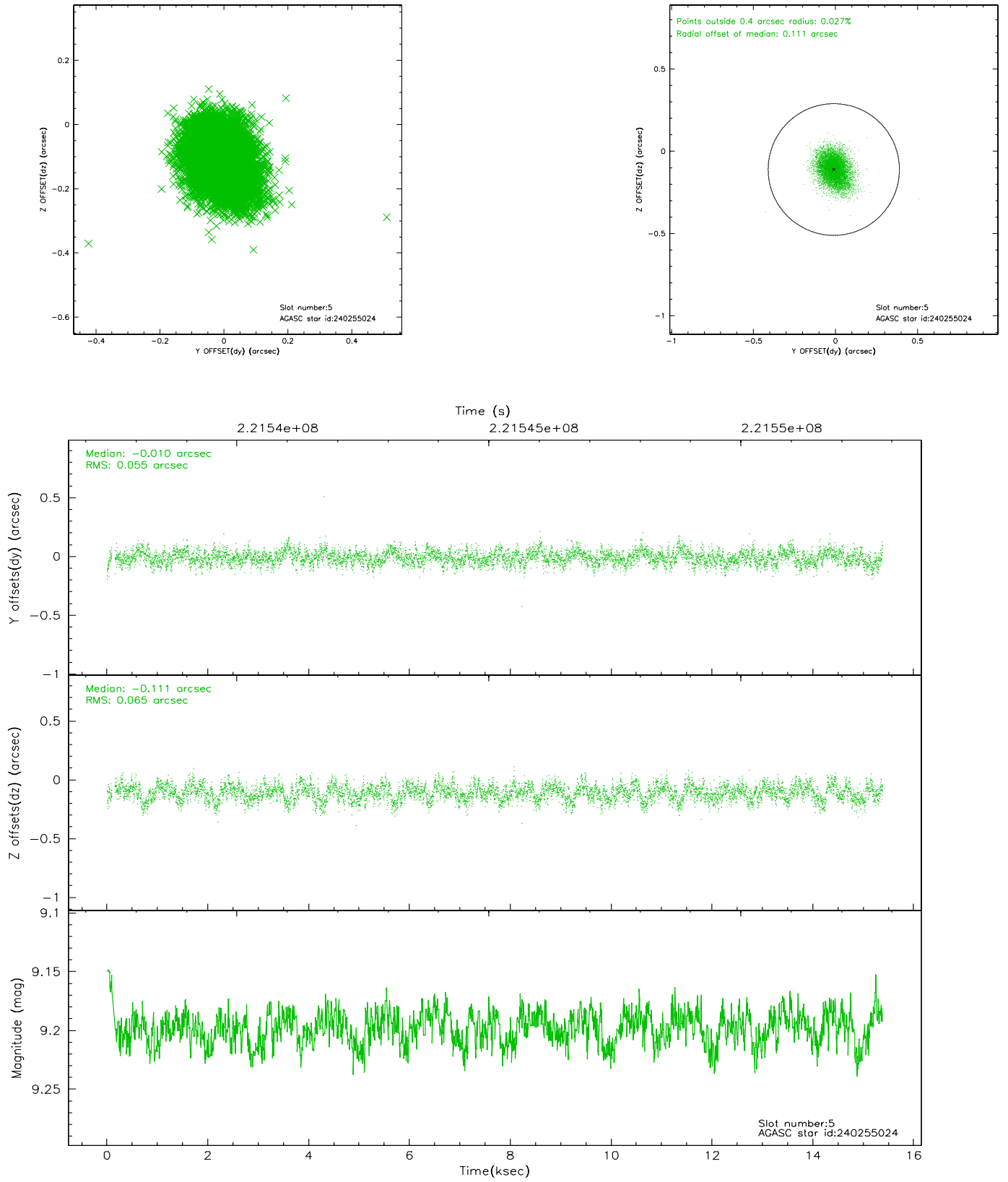
### 2.4.1 Slot 3



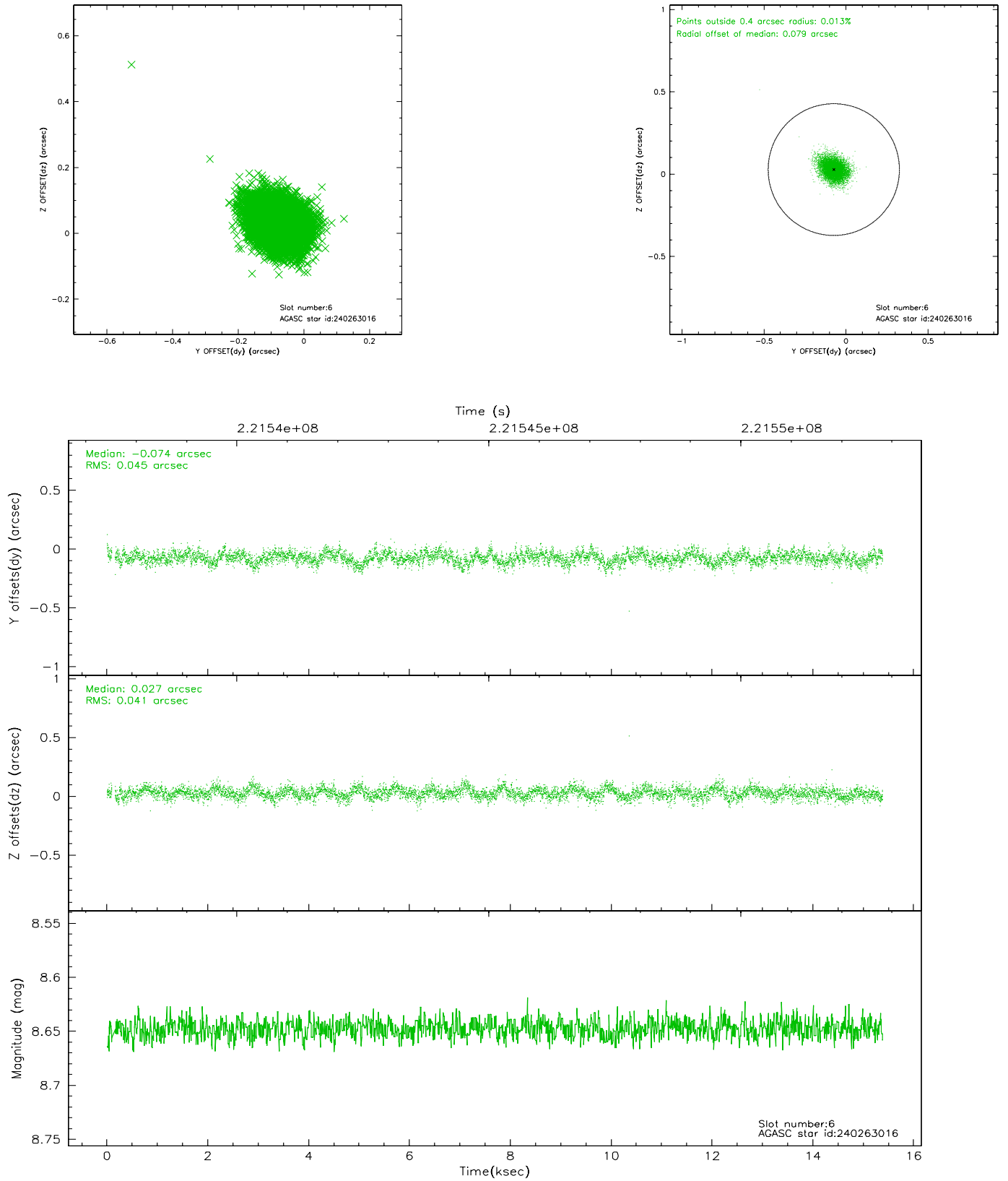
## 2.4.2 Slot 4



### 2.4.3 Slot 5

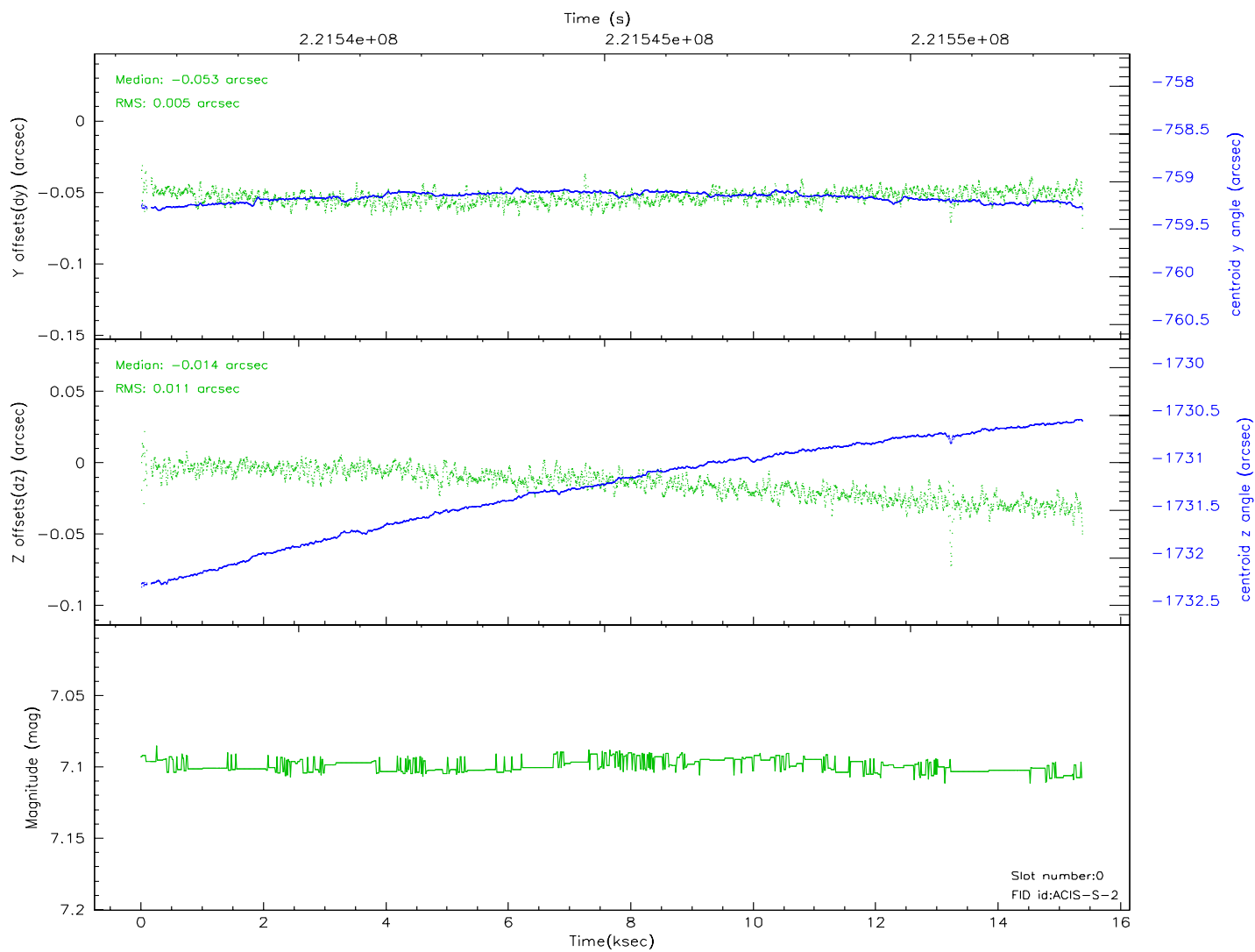
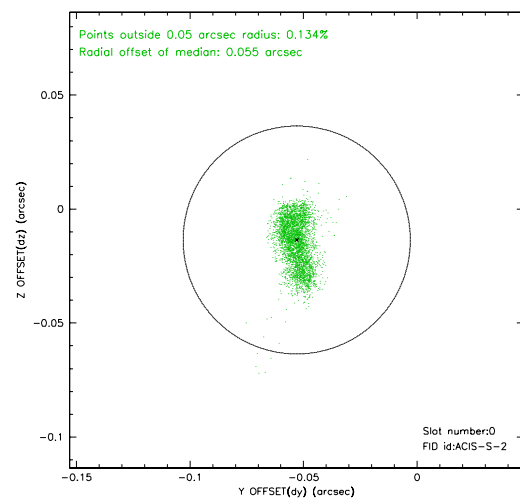
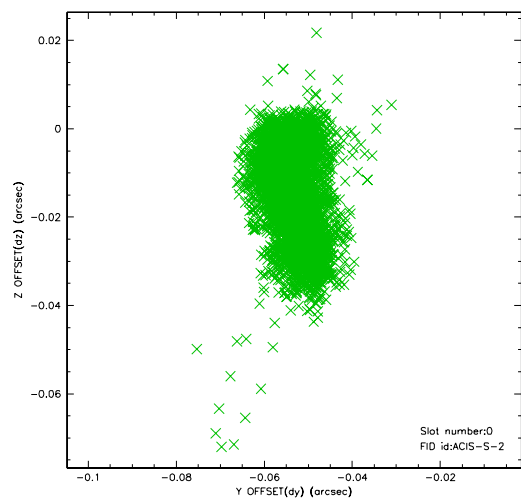


## 2.4.4 Slot 6

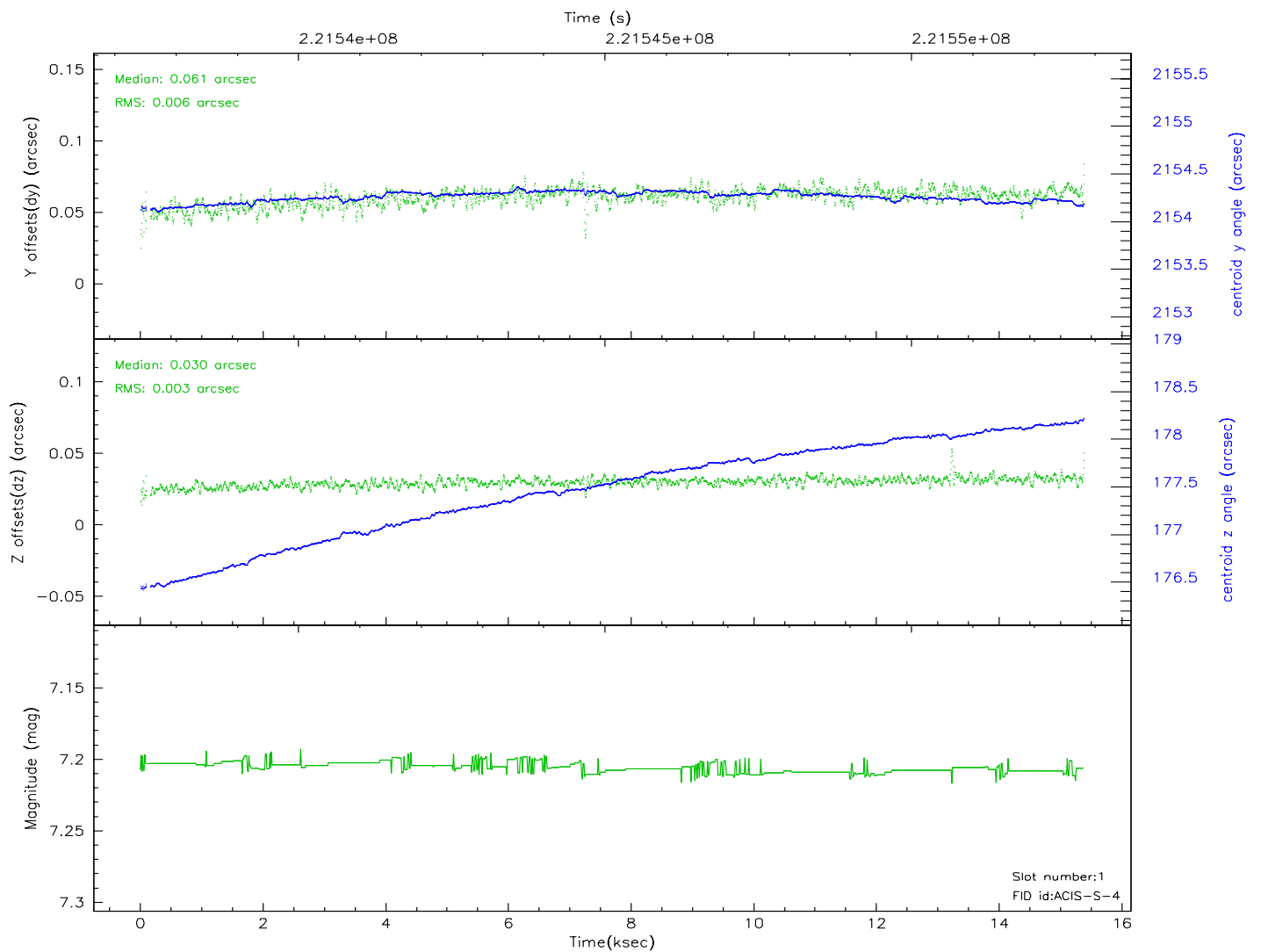
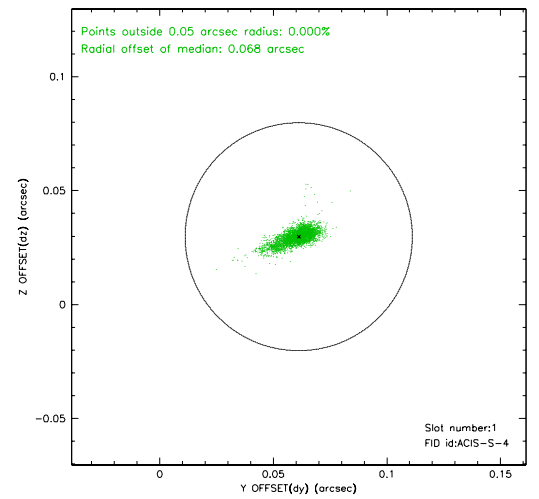
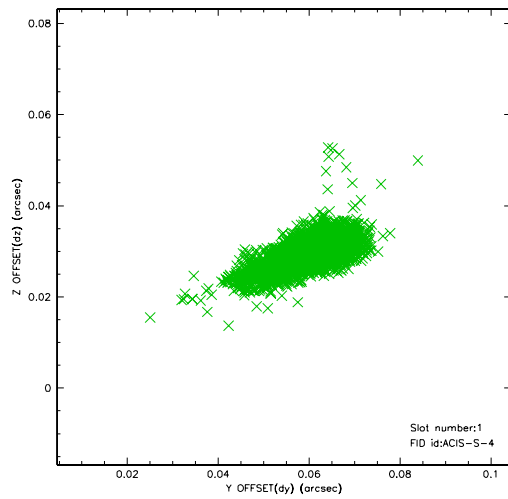


## 2.5 FID Slots

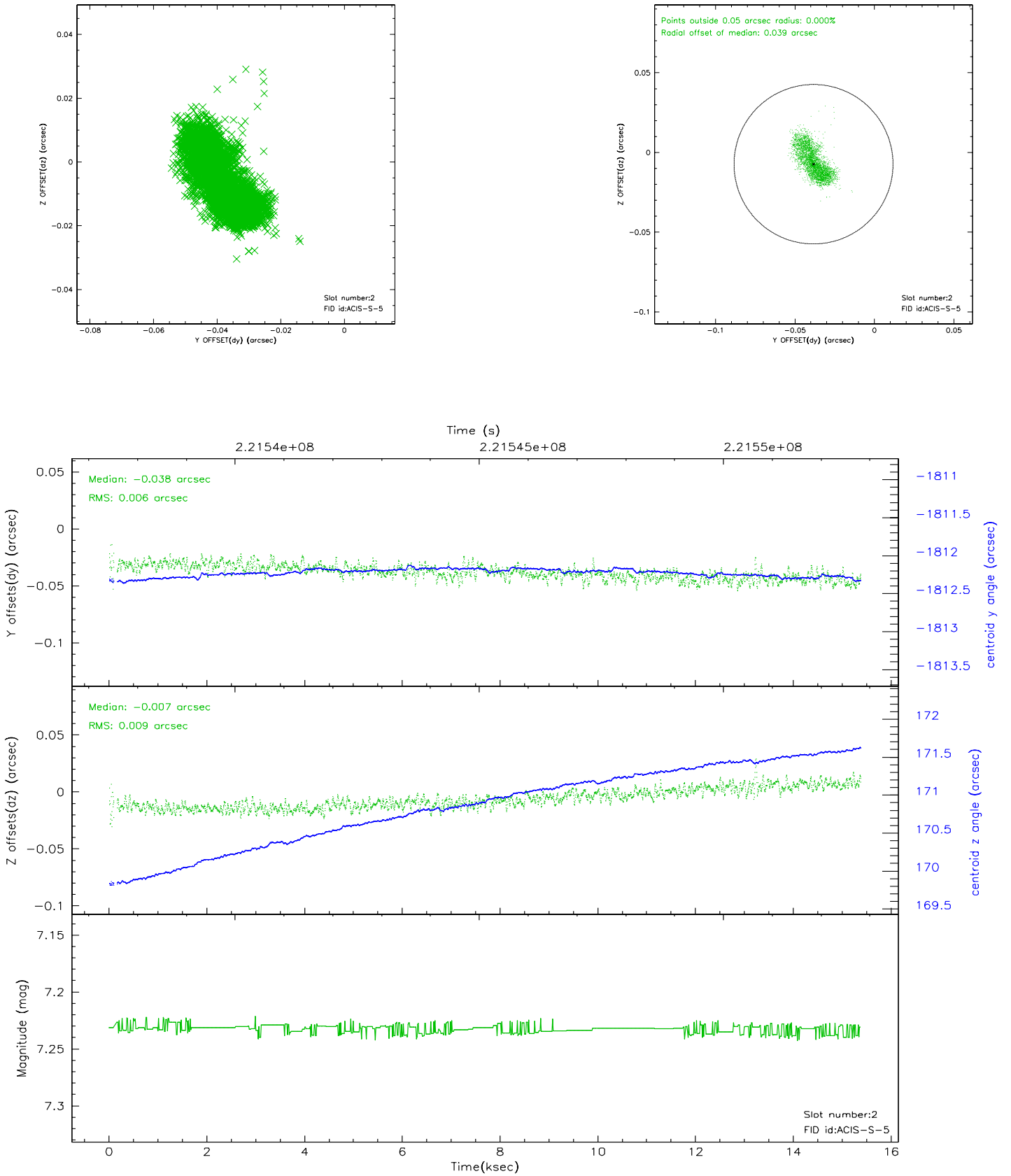
### 2.5.1 Slot 0



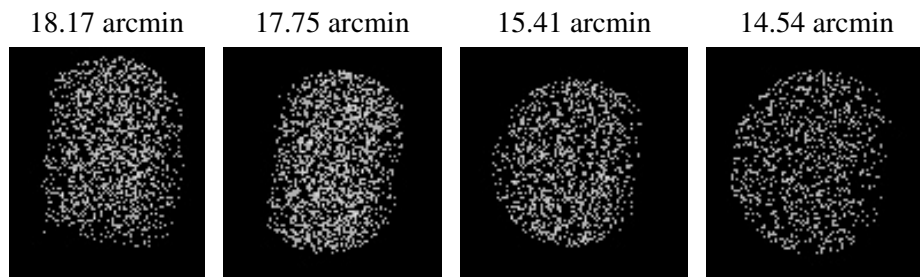
## 2.5.2 Slot 1



### 2.5.3 Slot 2



### 3 Point Sources





## A Summary

### A.1 Status

V&V Scientist	Joy Nichols
V&V Date (YYYY-MM-DD)	2006.02.16
V&V Edition	1
V&V Disposition and Status	OK
V&V Charge Time	15.227

### A.2 Comments