

V&V Reference Report

L2 ASCDS Version : 7.6.7

Observation 5377 - L2 Version 002
Chandra X-Ray Center

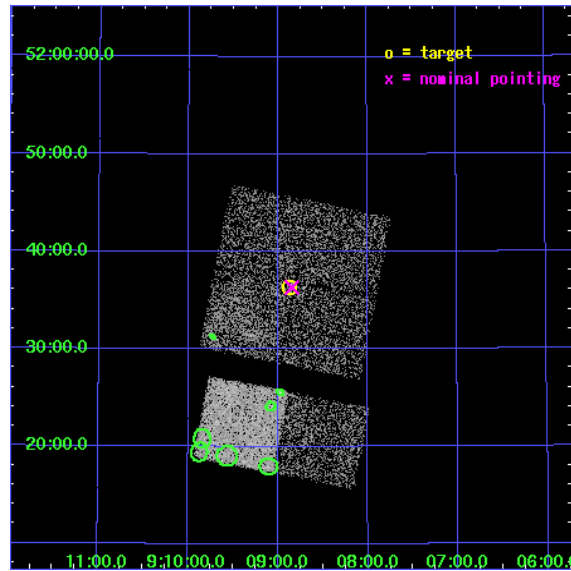
L2 Processing Date: Feb 22 2006

Contents

1	Front	2
2	OBI	3
2.1	OBI	3
2.1.1	Images	3
2.1.2	Bias	3
2.1.3	Parameters	4
2.1.4	Events	4
2.2	Compared Parameters	5
2.3	Aspect	6
2.4	Star Slots	9
2.4.1	Slot 3	9
2.4.2	Slot 4	10
2.4.3	Slot 5	11
2.4.4	Slot 6	12
2.4.5	Slot 7	13
2.5	FID Slots	14
2.5.1	Slot 0	14
2.5.2	Slot 1	15
2.5.3	Slot 2	16
3	Point Sources	17
A	Summary	18
A.1	Status	18
A.2	Comments	18

1 Front

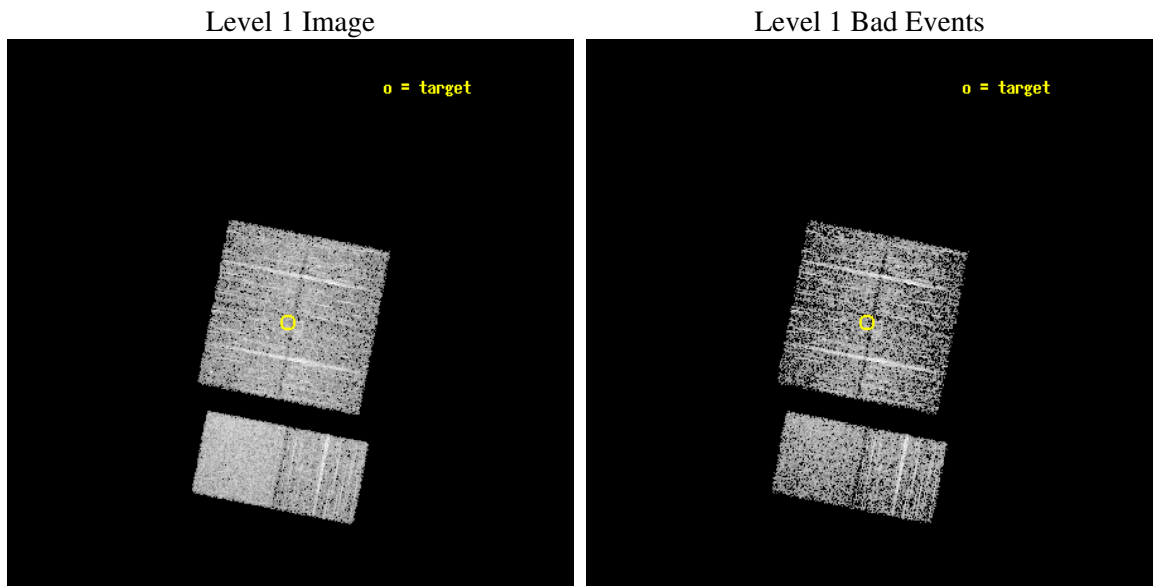
seq_num	200312
obs_id	5377
title	Search for beta Pic analogs
observer	Prof. Gordon Garmire
object	f UMa
dtcycle	0
cycle	P
ra_targ	137.218333
dec_targ	51.604722
ra_nom	137.21128400221
dec_nom	51.605600820477
roll_nom	191.03887034179
revision	2
ontime	2959.9999889731
livetime	2922.5186868147
ontime0	2959.9999889731
ontime1	2959.9999889731
ontime2	2959.9999889731
ontime3	2959.9999889731
ontime6	2959.9999889731
ontime7	2959.9999889731
l2events	22261



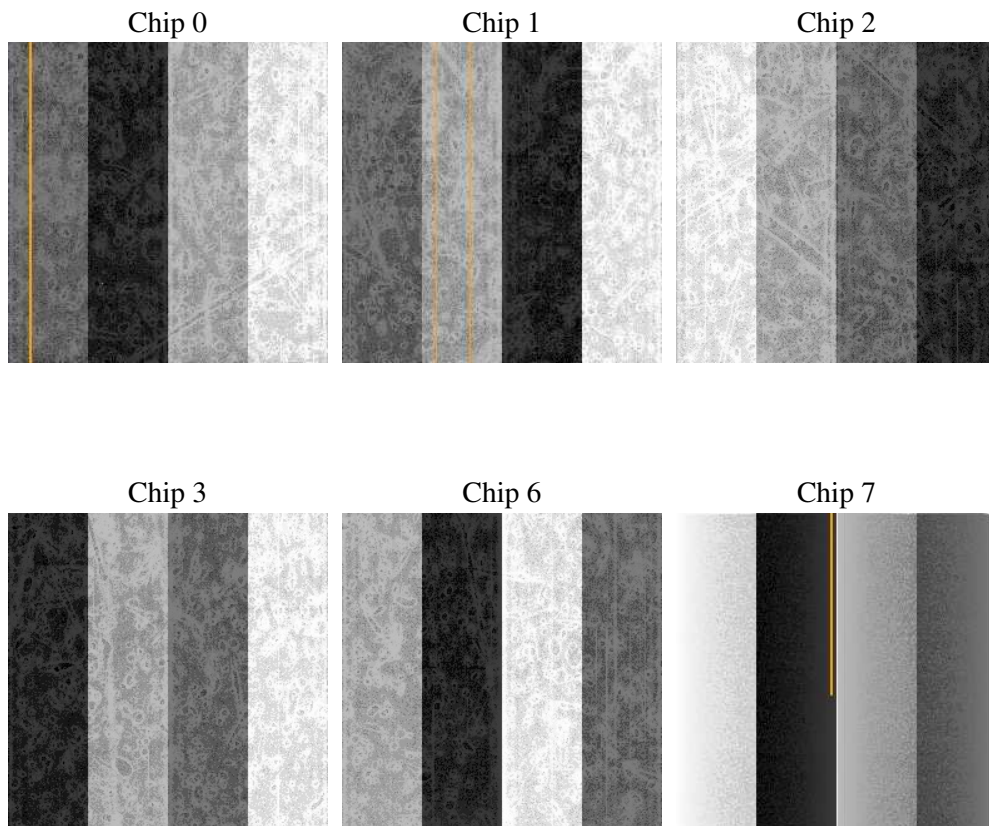
2 OBI

2.1 OBI

2.1.1 Images



2.1.2 Bias



2.1.3 Parameters

obi_num	0
ascdsver	7.6.7
caldsver	3.2.1
date	2006-02-22T21:23:02
revision	2

sched_exp_time	3000.000000
ontime	2965.522854358
ontime0	2965.522854358
ontime1	2965.522854358
ontime2	2965.522854358
ontime3	2965.522854358
ontime6	2965.522854358
ontime7	2965.522854358
l1events	130689

2.1.4 Events

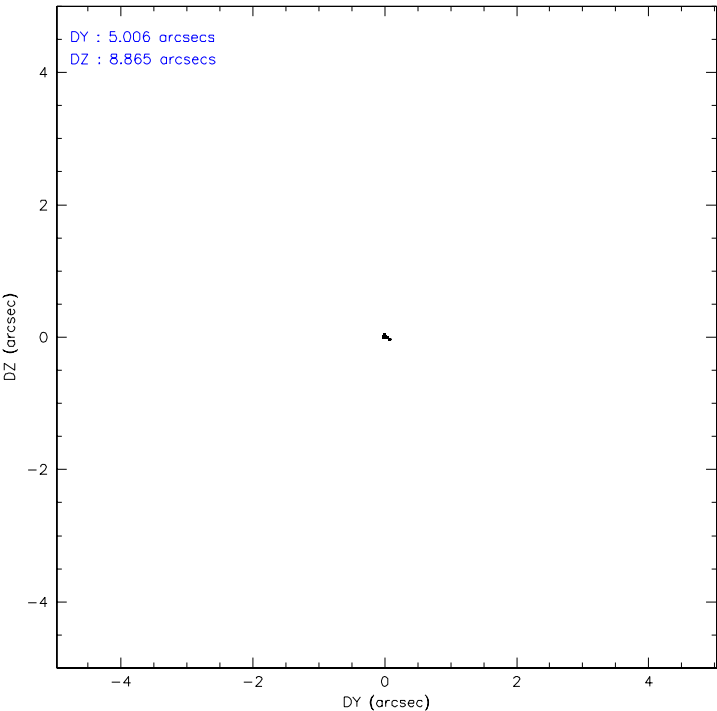
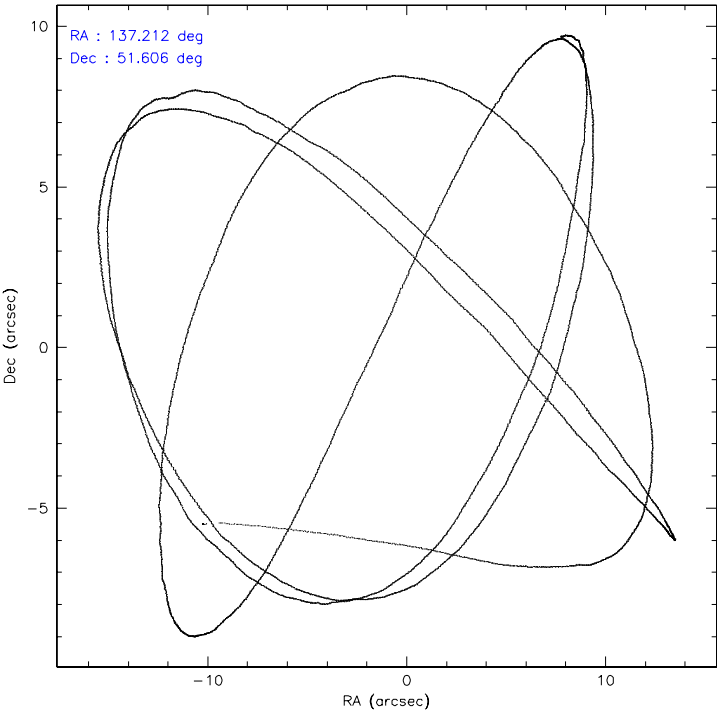
	ccd 0	ccd 1	ccd 2	ccd 3	ccd 6	ccd 7
level 1 events	19619	18870	20621	20178	22485	28916
rejected events	17134	16376	18048	16930	19949	18046
rejected %	87%	86%	87%	83%	88%	62%

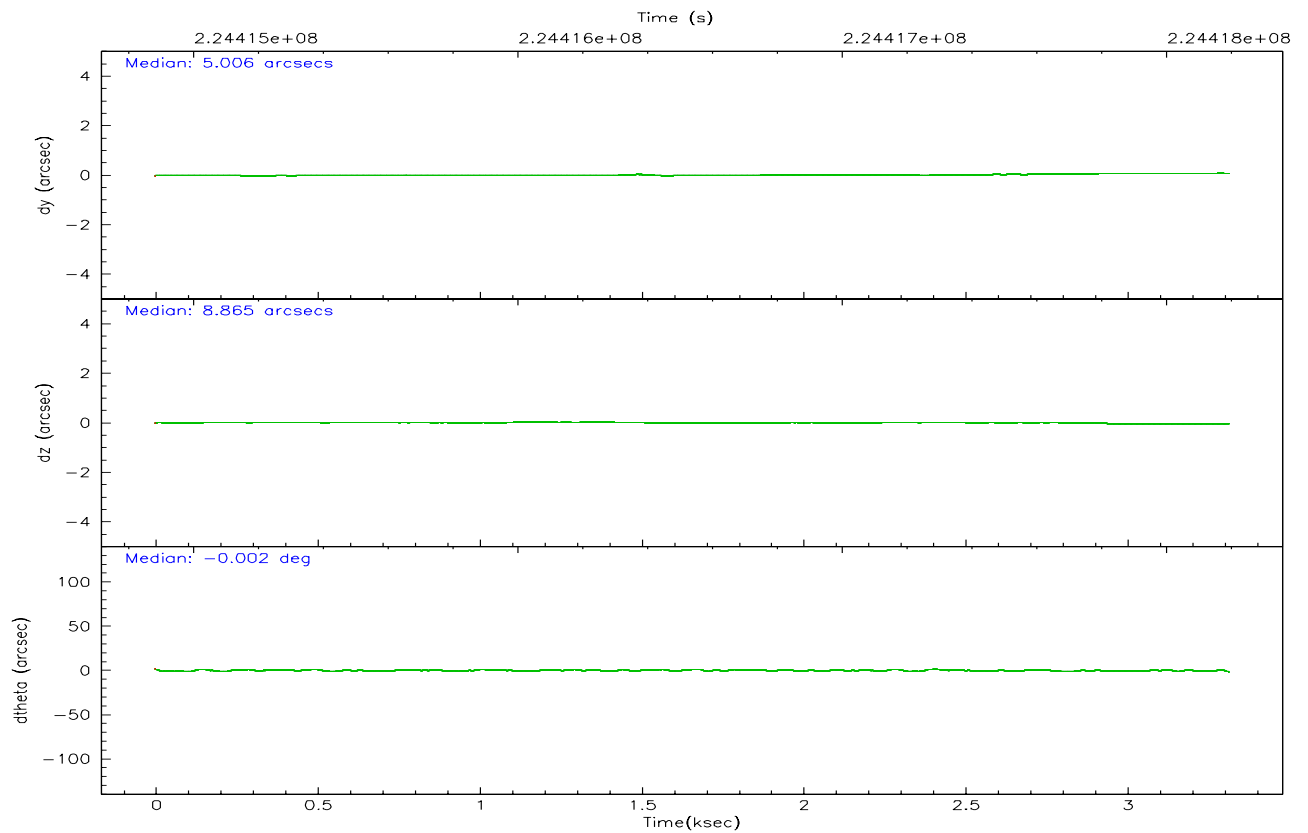
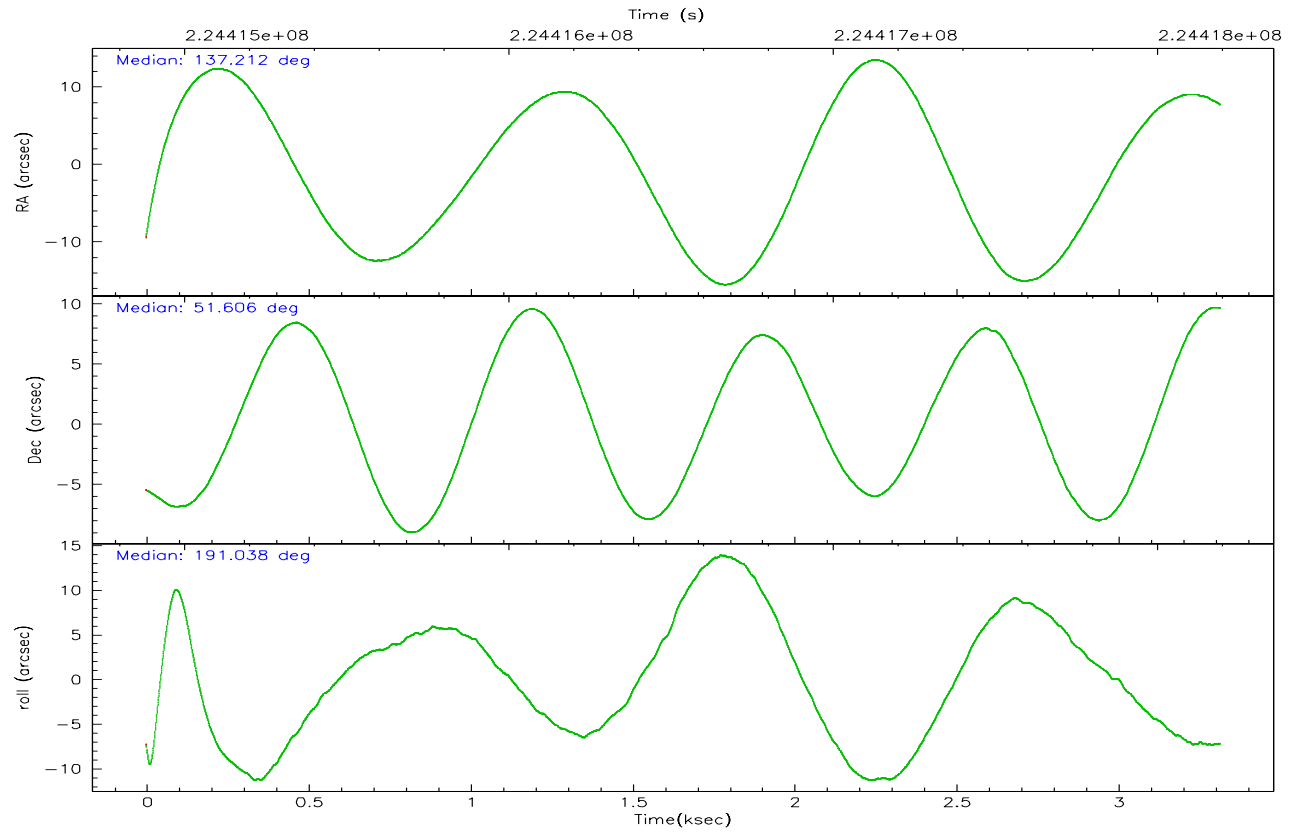
	ccd 0	ccd 1	ccd 2	ccd 3	ccd 6	ccd 7
grade 0 events	1065	1003	1152	1782	997	575
	5%	5%	5%	8%	4%	1%
grade 1 events	12	10	12	21	11	15
	0%	0%	0%	0%	0%	0%
grade 2 events	498	507	549	552	556	2765
	2%	2%	2%	2%	2%	9%
grade 3 events	245	242	237	269	229	513
	1%	1%	1%	1%	1%	1%
grade 4 events	249	261	228	220	240	488
	1%	1%	1%	1%	1%	1%
grade 5 events	867	958	849	939	1009	1947
	4%	5%	4%	4%	4%	6%
grade 6 events	432	486	414	434	518	6561
	2%	2%	2%	2%	2%	22%
grade 7 events	16251	15403	17180	15961	18925	16052
	82%	81%	83%	79%	84%	55%

2.2 Compared Parameters

Parameter	Planned	Actual	Parameter	Planned	Actual
Instrument	ACIS	ACIS	Obspar format version number	6	6
Detector	ACIS-012367	ACIS-012367	Obspar file type	PREDICTED	ACTUAL
Grating	NONE	NONE	Obspar update status	NONE	UPDATED
Data mode	FAINT	FAINT	On-chip summing requested	N	N
Observation mode	POINTING	POINTING	Subarray requested	NONE	NONE
Pointing RA	137.244179	137.2112840022102	Alternating exposures requested	N	N
Pointing Dec	51.623735	51.60560082047702	Primary exposure time	0.000000	3.2
Pointing Roll	190.804512	191.0388703417859			
SIM focus pos (mm)	-0.782348	-0.7809083437167272			
SIM defocus (mm)	0	0.001439871863259334			
SIM translation stage pos (mm)	-233.592463	-233.5874344608287			
SIM translation stage offset (mm)	0	-0.005018542100998502			
Observation start time	224415192.184000	224414021.71952			
Observation start date	2005-02-10T09:32:08	2005-02-10T09:13:41			
Observation end time	224418192.184000	224419081.63225			
Observation end date	2005-02-10T10:22:08	2005-02-10T10:38:01			
Read mode	TIMED	TIMED			

2.3 Aspect



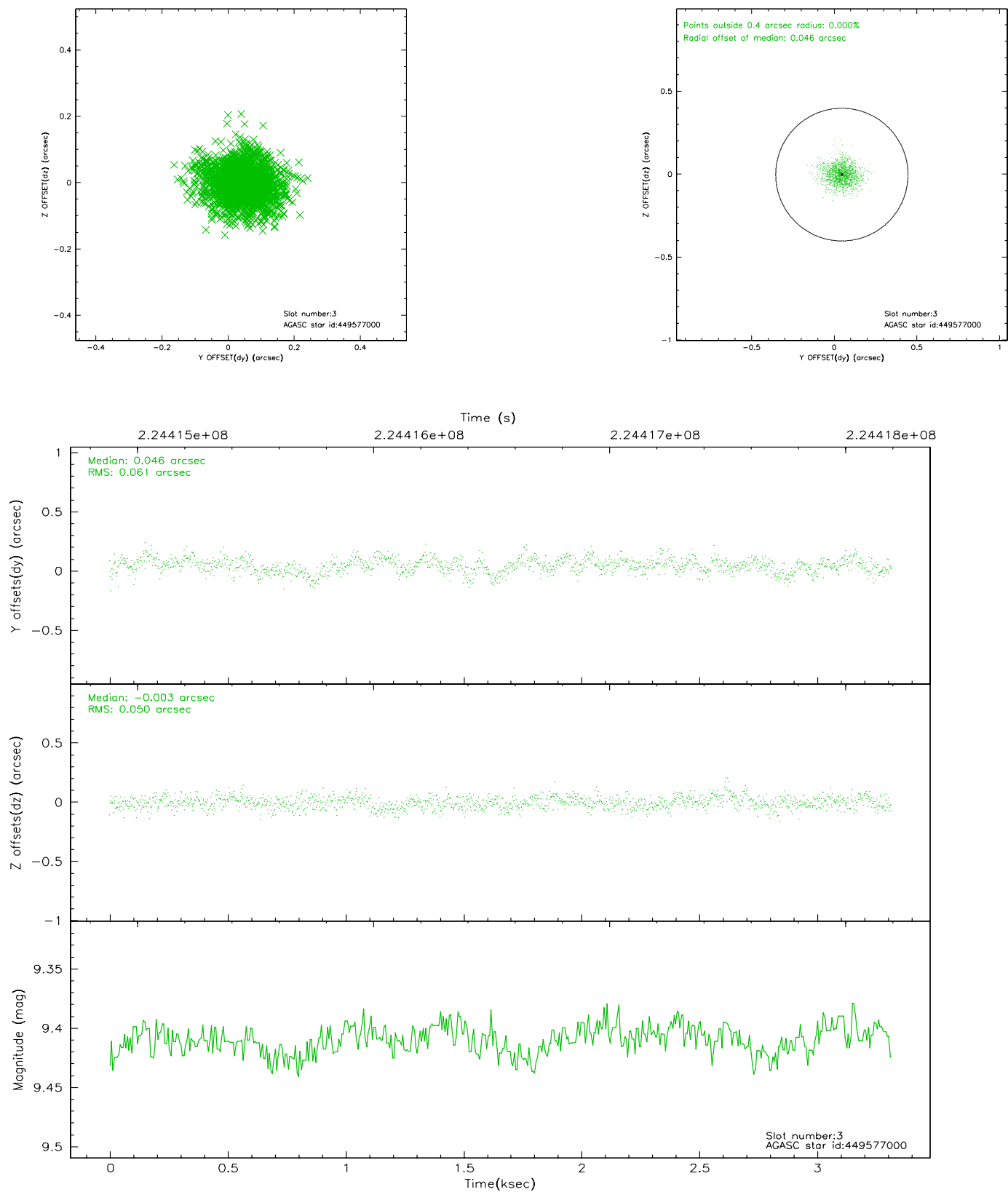


Slot Statistics

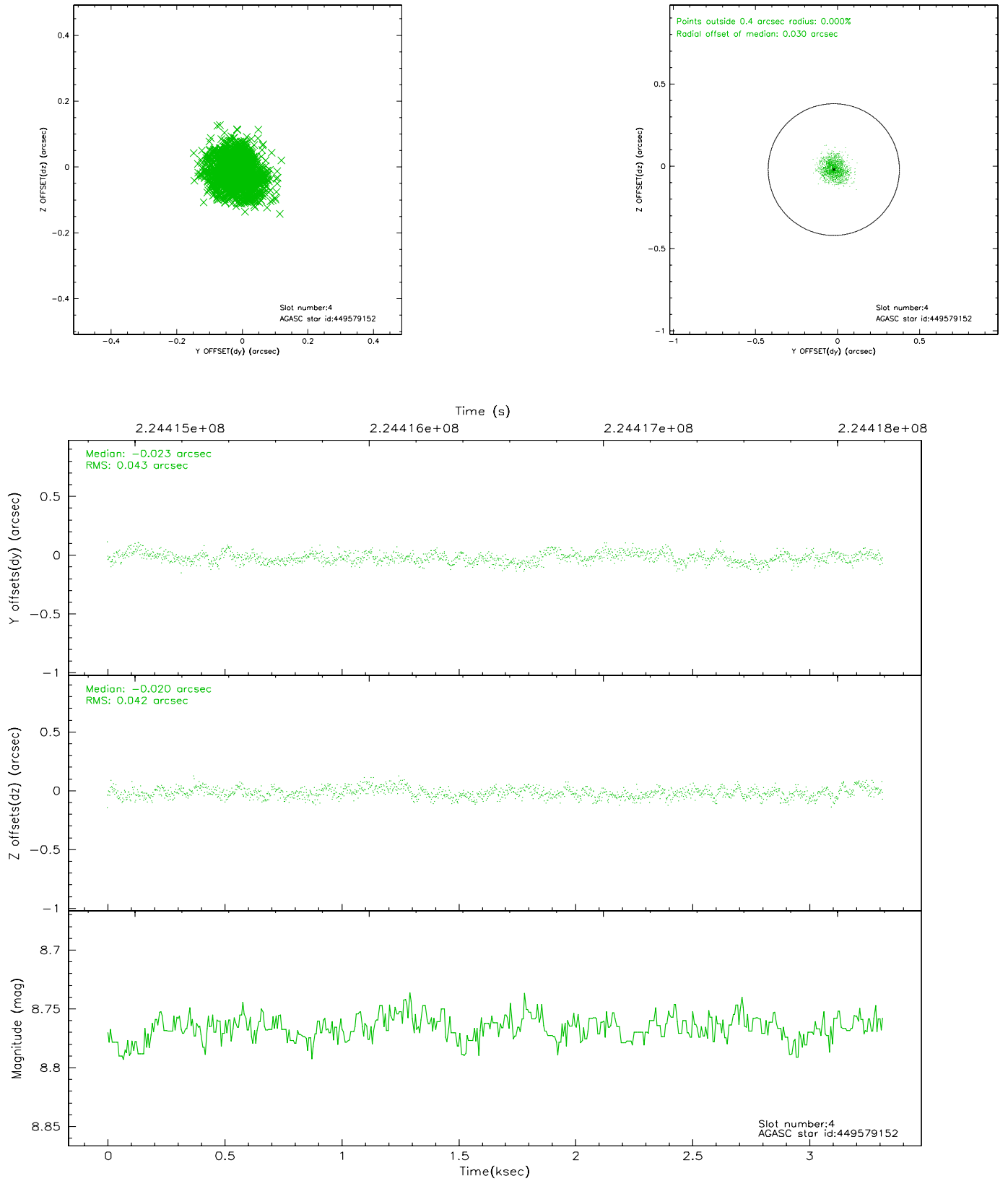
slot	status	id	mag	n_pts	med_dy	med_dz	dr1	dr2	ra	dec	mean_y	mean_z
0	FID	ACIS-I-1	7.24	810	-0.015	0.067	0.008	0.013	0.000000	0.000000	934.71	-832.24
1	FID	ACIS-I-4	7.19	810	0.074	-0.015	0.006	0.010	0.000000	0.000000	2155.91	1066.54
2	FID	ACIS-I-5	7.22	810	-0.158	0.020	0.006	0.010	0.000000	0.000000	-1810.97	1066.59
3	GUIDE	449577000	9.41	1618	0.046	-0.003	0.083	0.138	137.786748	51.305874	-985.18	1348.25
4	GUIDE	449579152	8.77	1619	-0.023	-0.020	0.065	0.101	137.519862	51.431286	-478.13	795.99
5	GUIDE	449580392	9.26	1617	-0.011	0.025	0.094	0.150	136.586076	50.962265	1911.13	2053.16
6	GUIDE	449580944	9.53	1619	0.029	-0.037	0.120	0.189	136.730333	51.335063	1331.04	801.16
7	GUIDE	449584768	7.12	1618	-0.034	0.036	0.063	0.094	136.806399	51.629931	957.63	-207.87

2.4 Star Slots

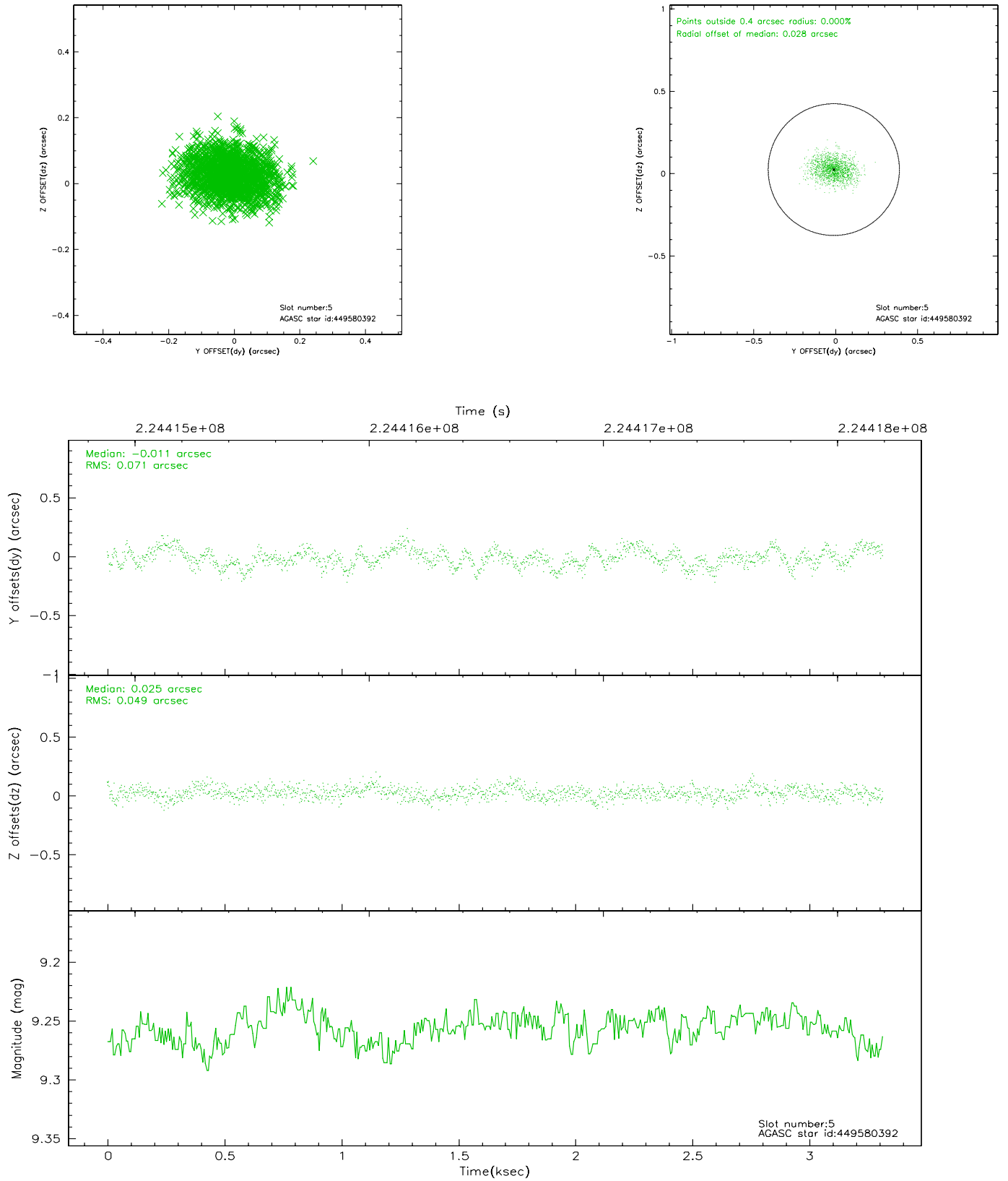
2.4.1 Slot 3



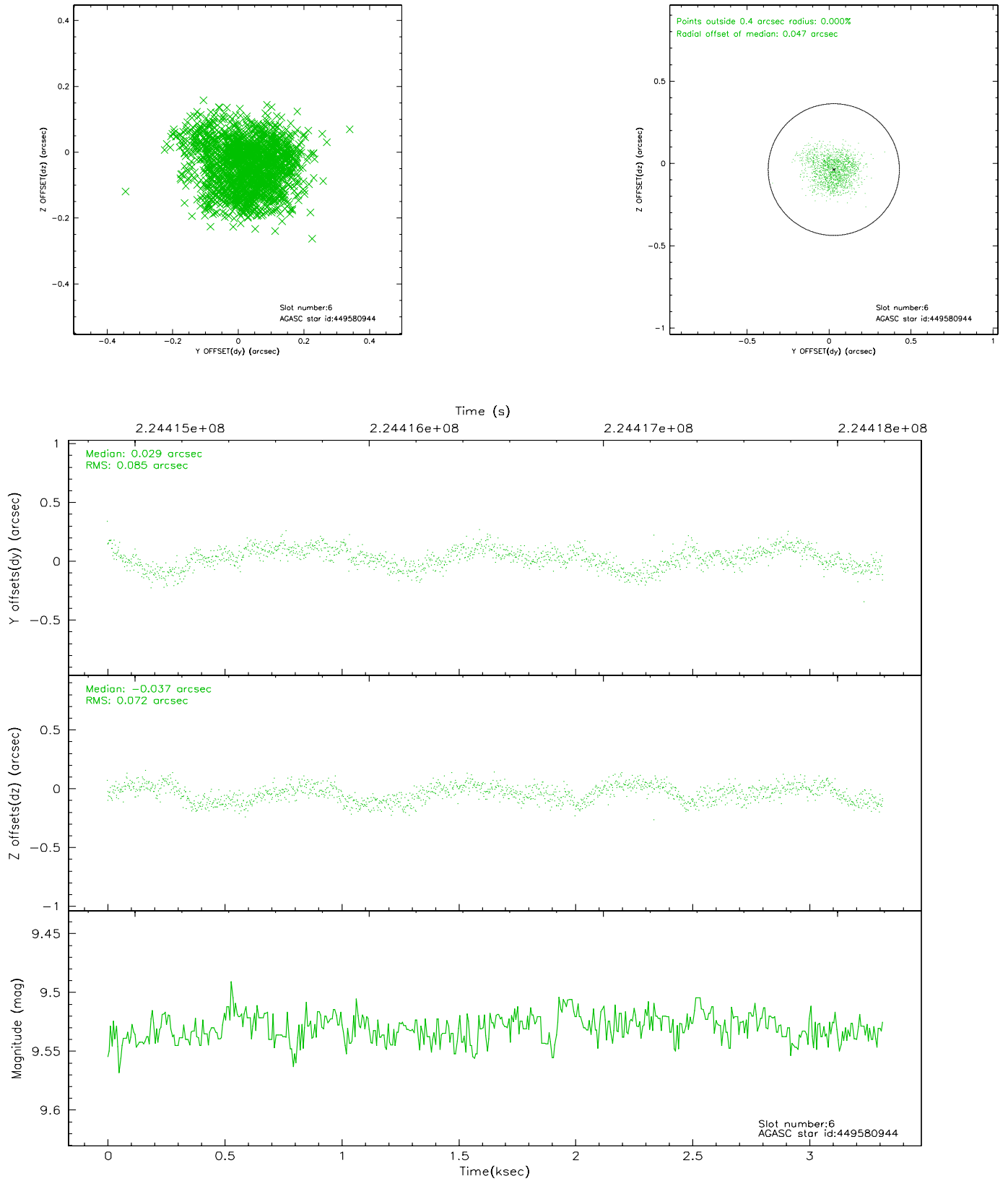
2.4.2 Slot 4



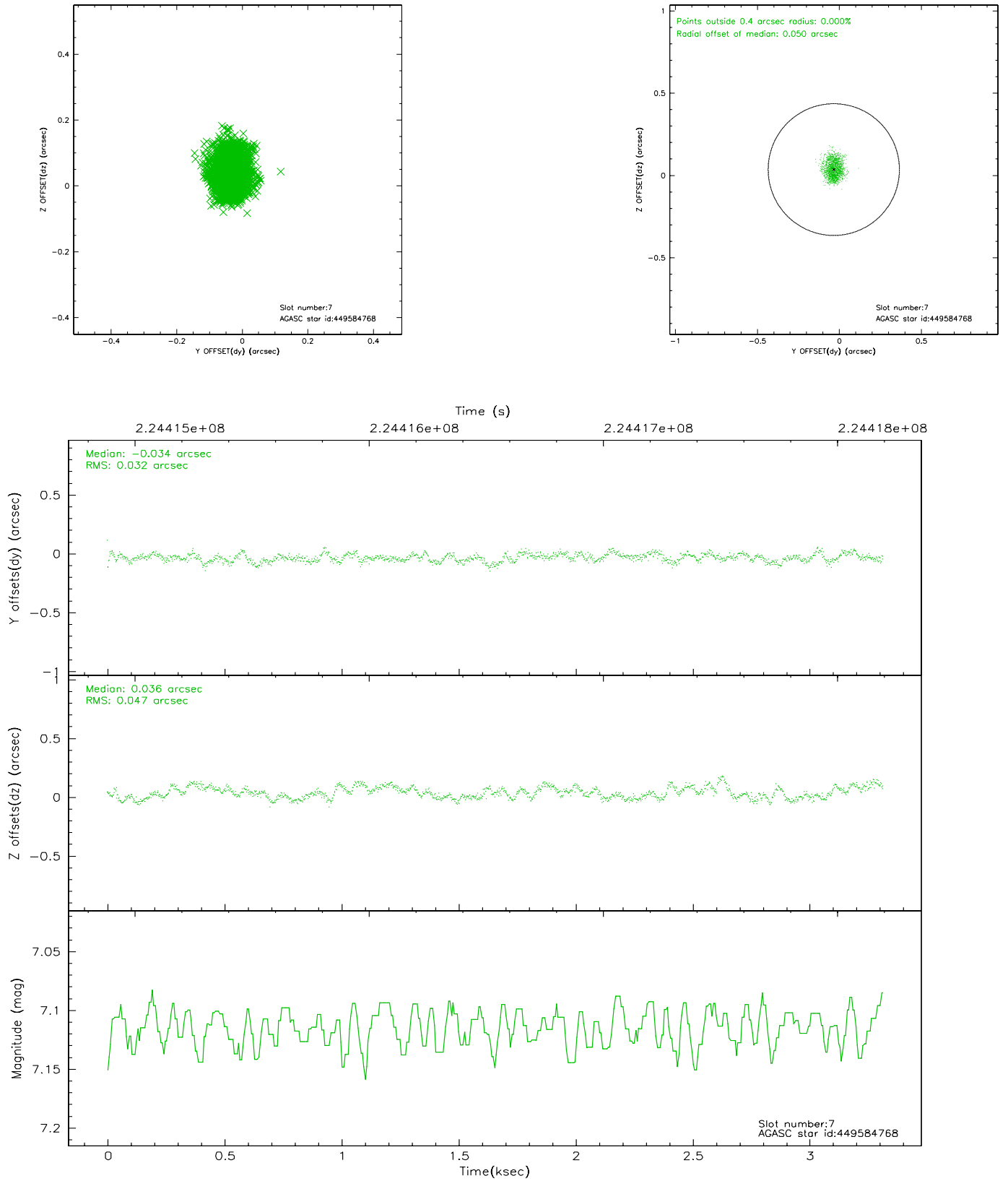
2.4.3 Slot 5



2.4.4 Slot 6

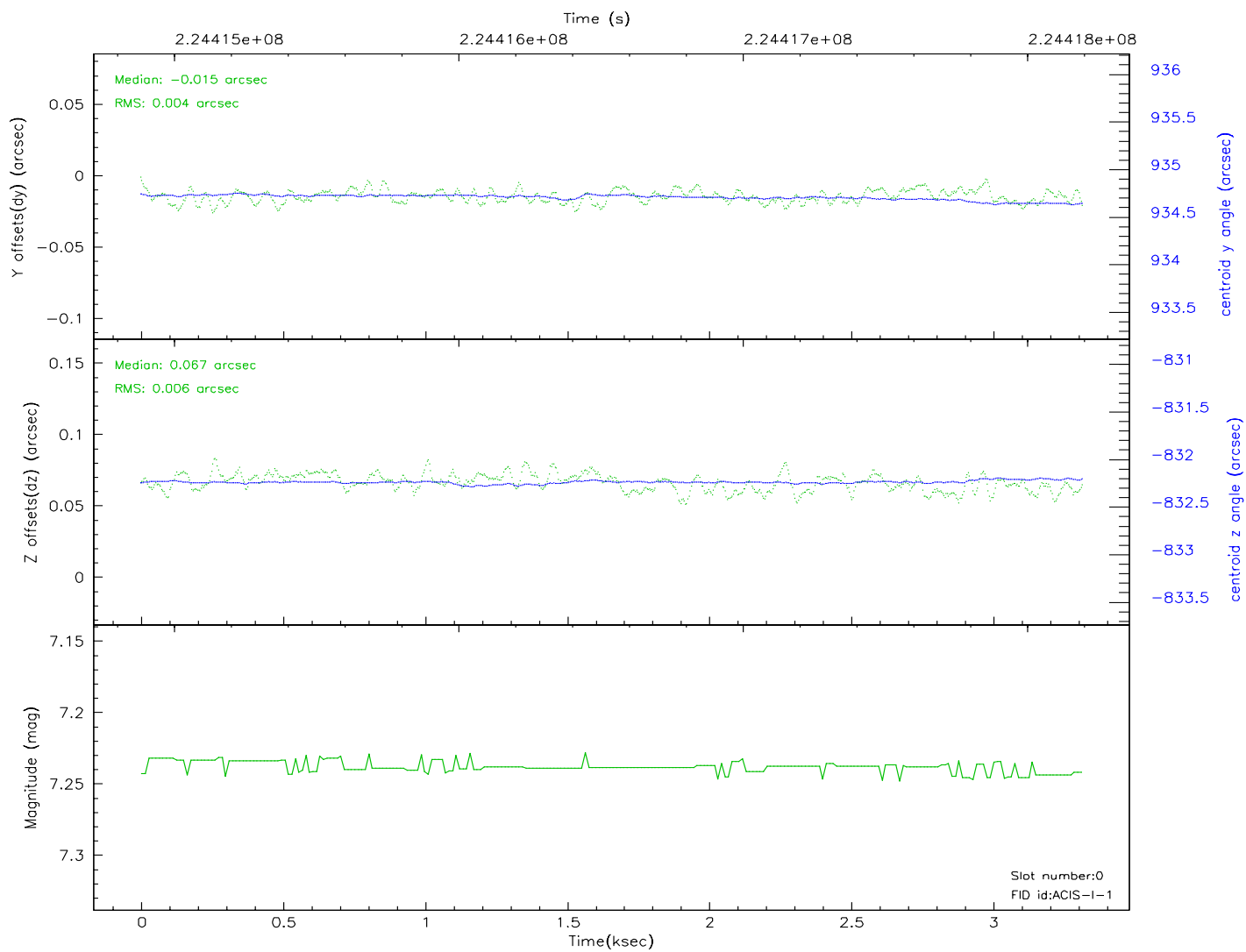
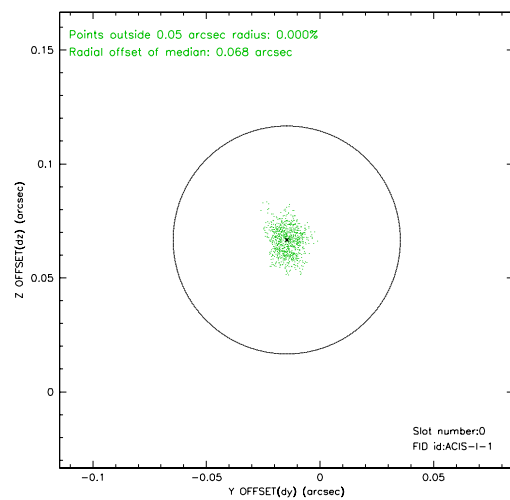
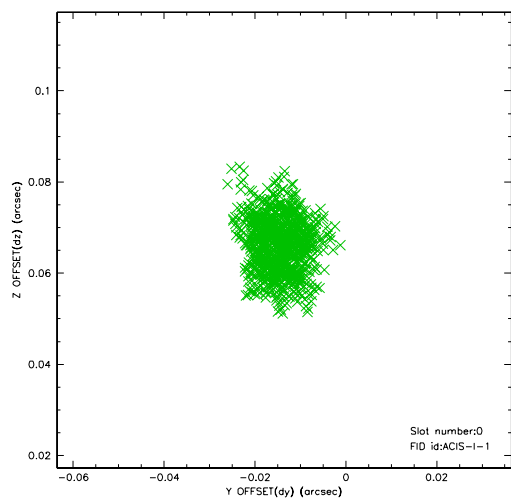


2.4.5 Slot 7

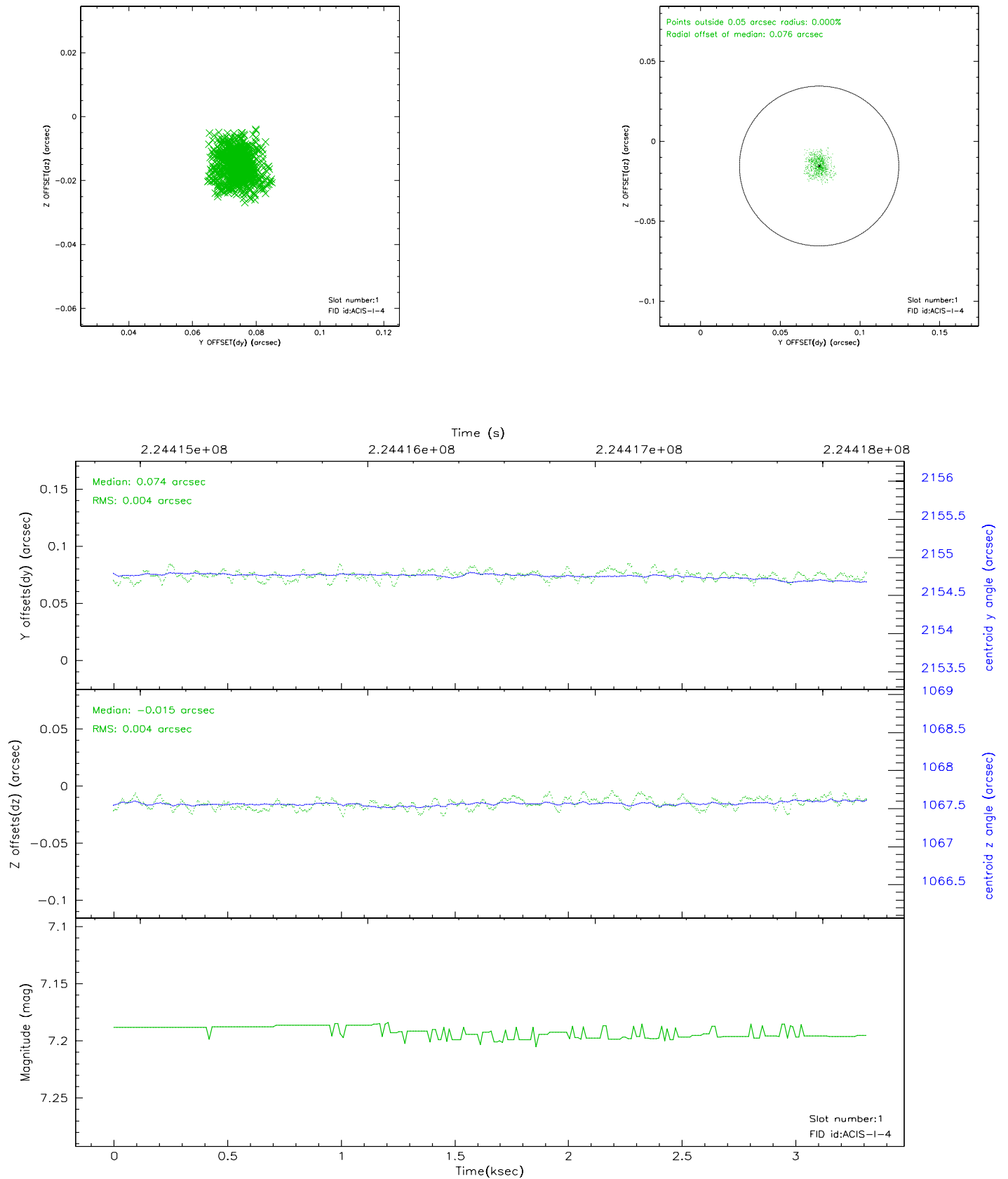


2.5 FID Slots

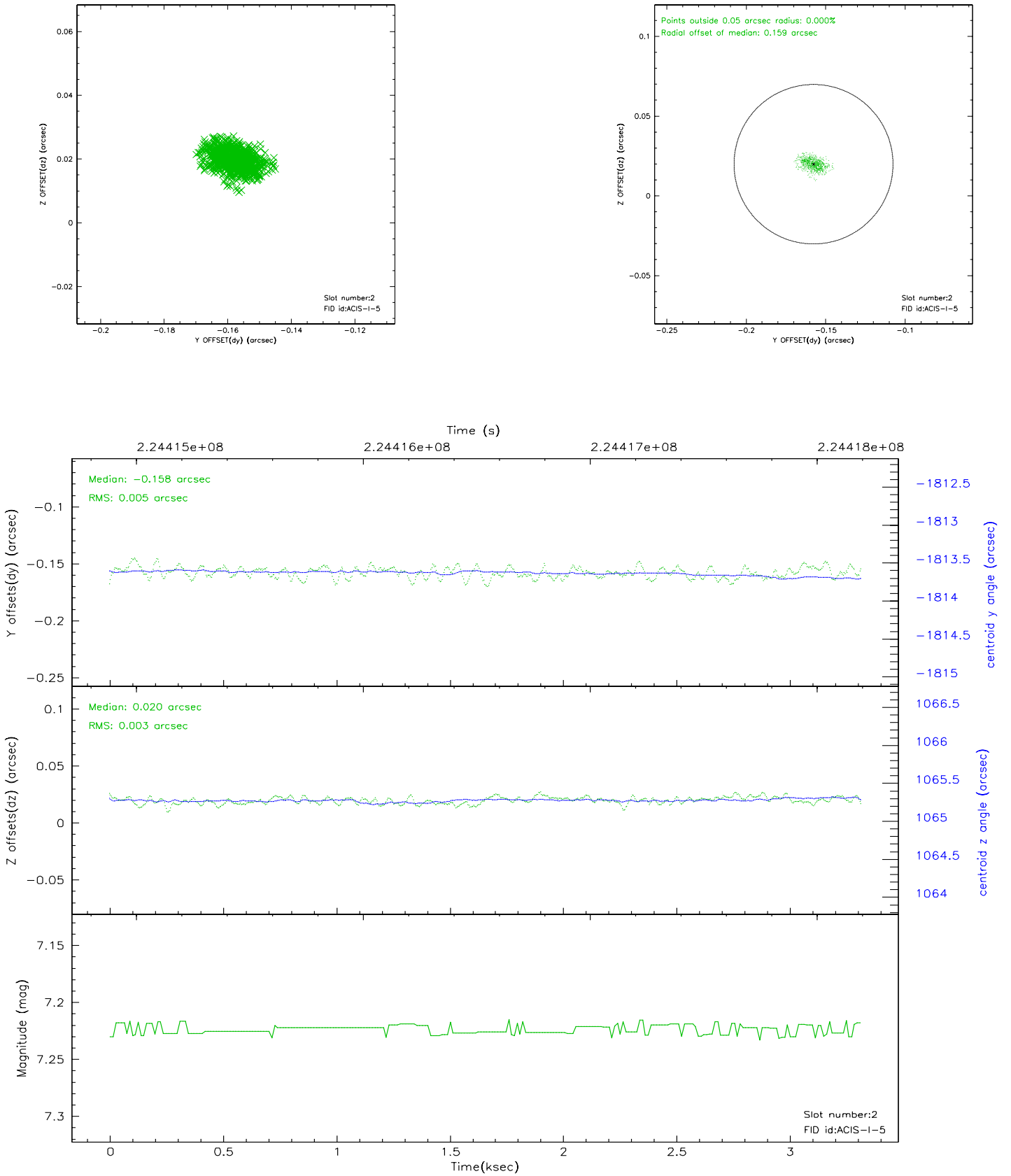
2.5.1 Slot 0



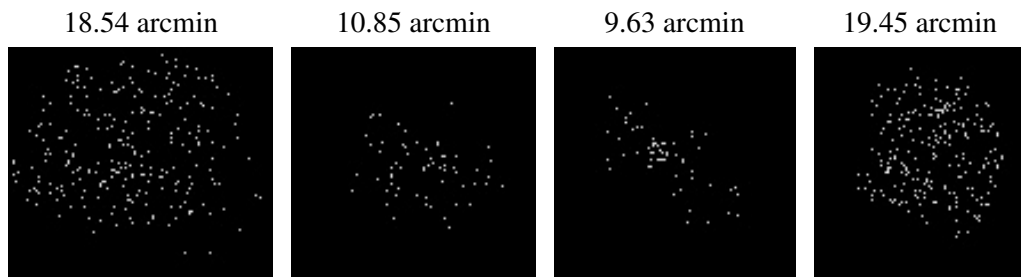
2.5.2 Slot 1



2.5.3 Slot 2



3 Point Sources



A Summary

A.1 Status

V&V Scientist	Jen Lauer
V&V Date (YYYY-MM-DD)	2006.02.23
V&V Edition	1
V&V Disposition and Status	OK
V&V Charge Time	2.959999

A.2 Comments