

V&V Reference Report

L2 ASCDS Version : 7.6.7.2

Observation 5287 - L2 Version 001
Chandra X-Ray Center

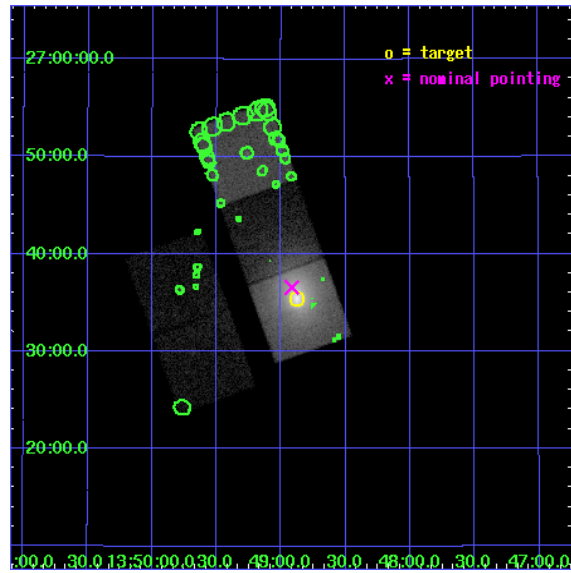
L2 Processing Date : Jun 6 2006

Contents

1	Front	2
2	OBI	3
2.1	OBI	3
2.1.1	Images	3
2.1.2	Bias	3
2.1.3	Parameters	4
2.1.4	Events	4
2.2	Compared Parameters	5
2.3	Aspect	6
2.4	Star Slots	9
2.4.1	Slot 3	9
2.4.2	Slot 4	10
2.4.3	Slot 5	11
2.4.4	Slot 6	12
2.4.5	Slot 7	13
2.5	FID Slots	14
2.5.1	Slot 0	14
2.5.2	Slot 1	15
2.5.3	Slot 2	16
3	Point Sources	17
A	Summary	18
A.1	Status	18
A.2	Comments	18

1 Front

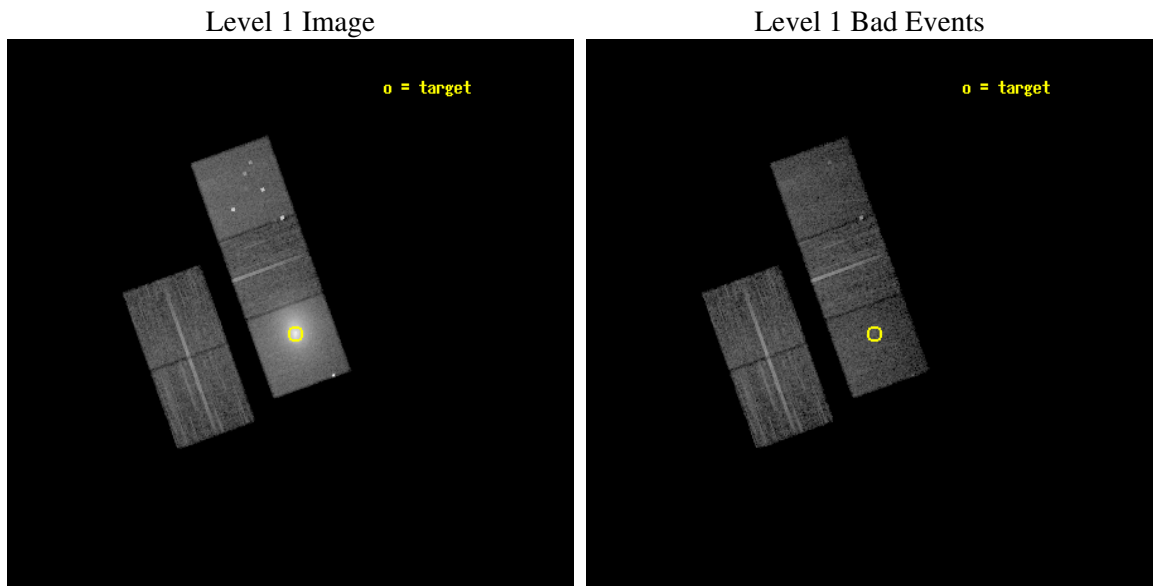
seq_num	890027
obs_id	5287
title	Mapping the Depth of the Contaminant on the ACIS Filters with Abell 11795
observer	Dr. CXC Calibration
object	A1795
dtcycle	0
cycle	P
ra_targ	207.219583
dec_targ	26.590833
ra_nom	207.22920970828
dec_nom	26.609716419413
roll_nom	70.236180364976
revision	2
ontime	14492.499972135
livetime	14303.144790776
ontime2	14492.499972135
ontime3	14483.077091277
ontime5	14492.499972135
ontime6	14492.499972135
ontime7	14492.499972135
l2events	288179



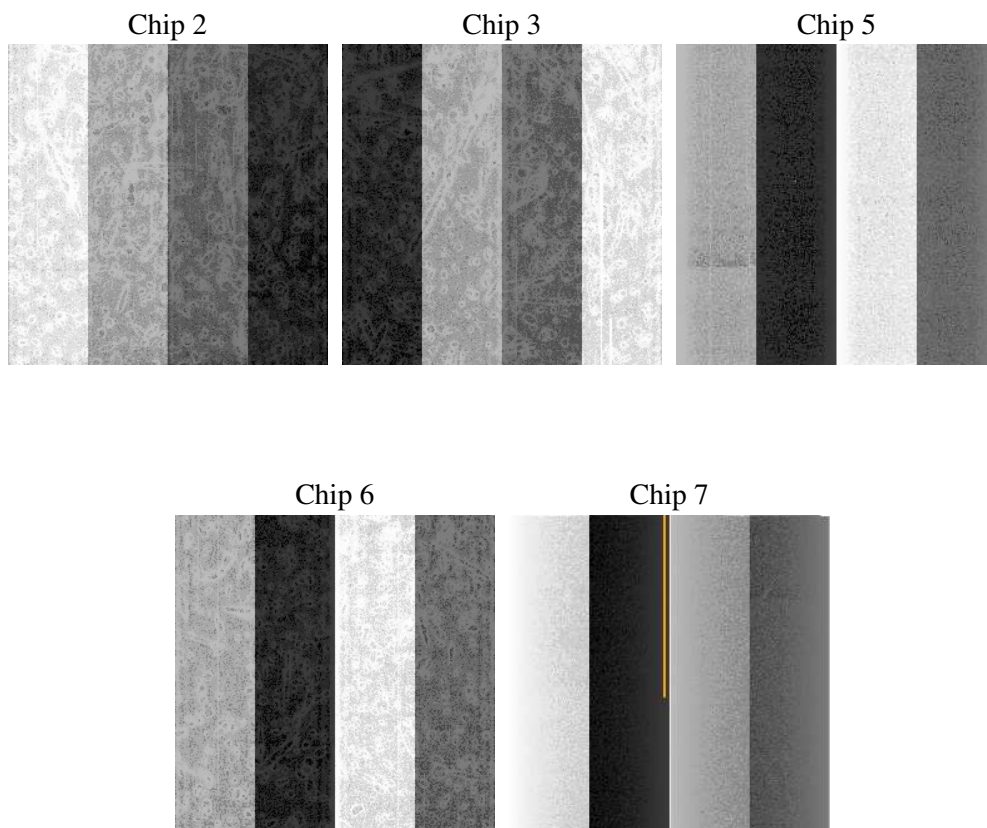
2 OBI

2.1 OBI

2.1.1 Images



2.1.2 Bias



2.1.3 Parameters

obi_num	1
ascdsver	7.6.7.2
caldsver	3.2.2
date	2006-06-06T19:13:51
revision	2

sched_exp_time	14715.000000
ontime	14495.730051696
ontime2	14495.730051696
ontime3	14486.307170838
ontime5	14495.730071604
ontime6	14495.730051696
ontime7	14495.730051696
l1events	600347

2.1.4 Events

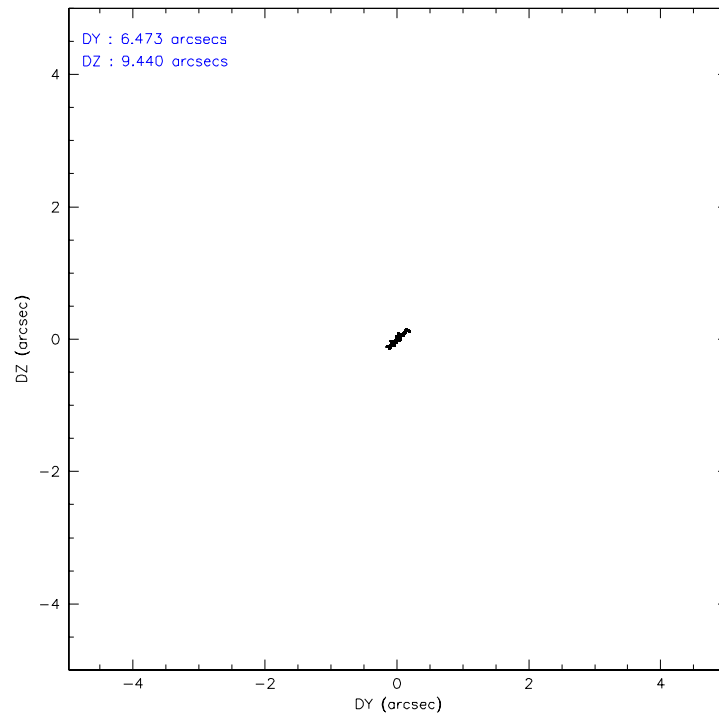
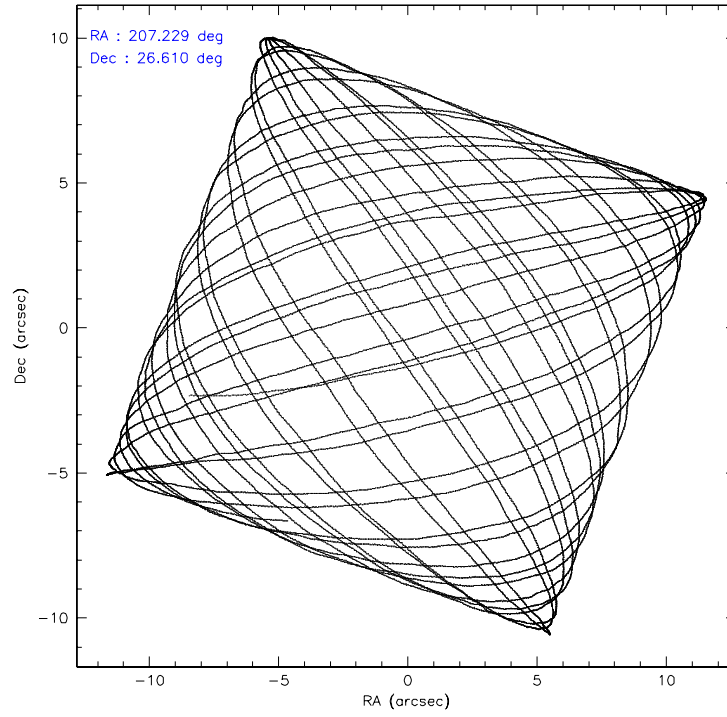
	ccd 2	ccd 3	ccd 5	ccd 6	ccd 7
level 1 events	73724	73360	106898	83781	262584
rejected events	65779	65749	52464	62801	48967
rejected %	89%	89%	49%	74%	18%

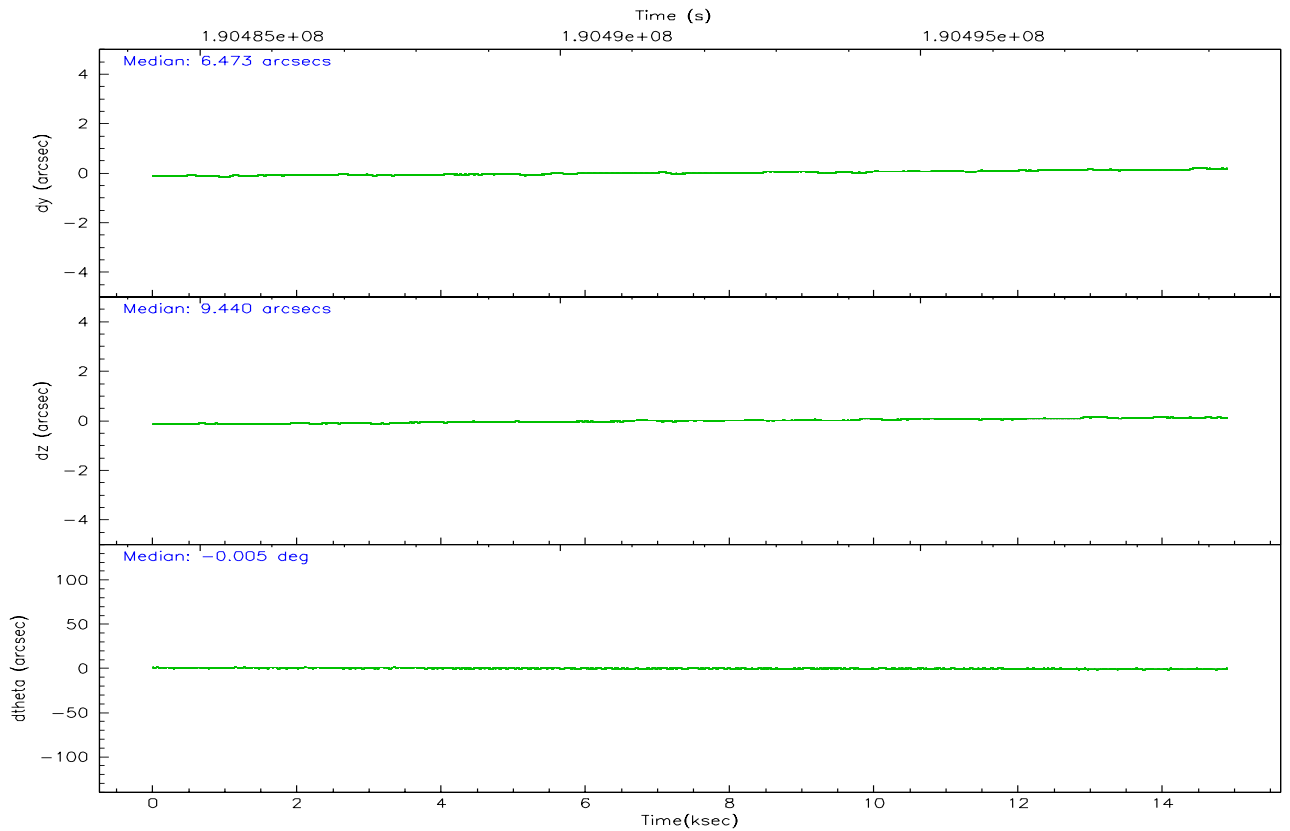
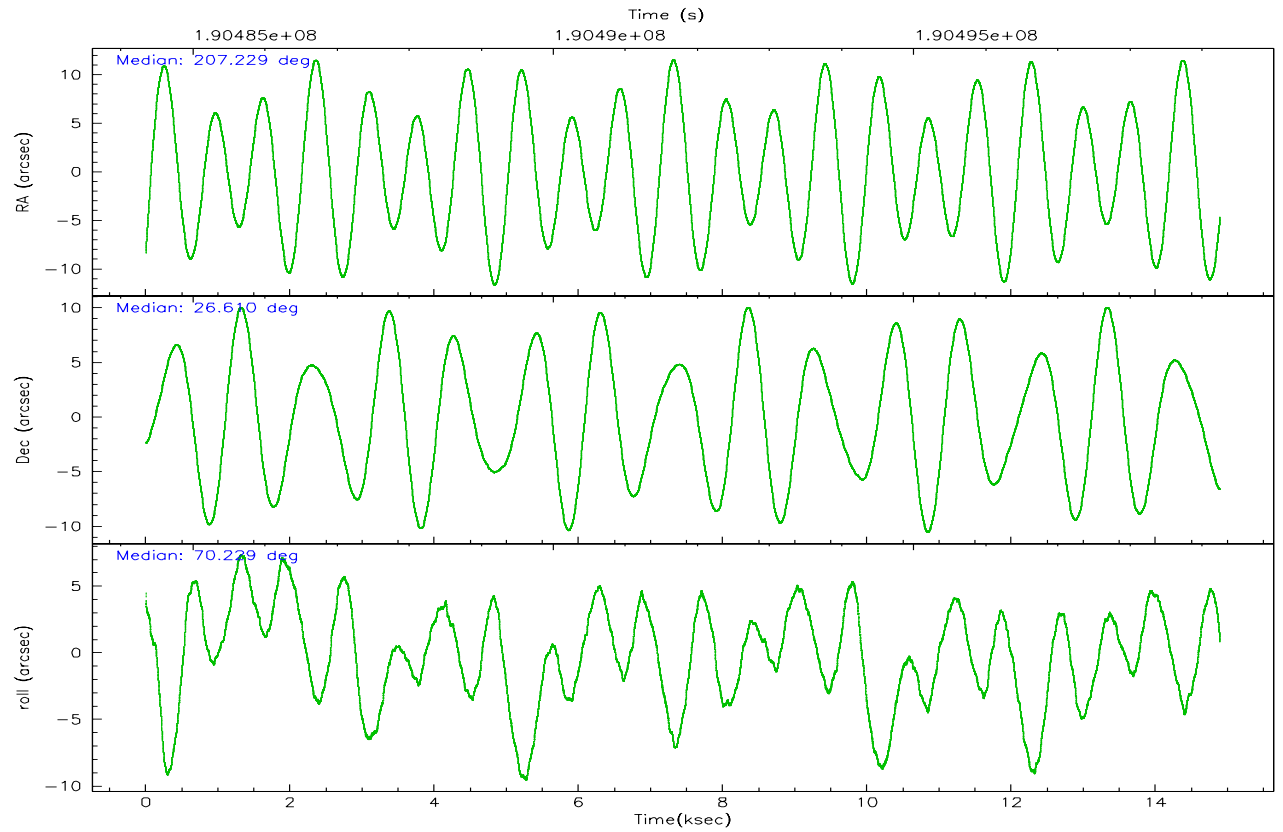
	ccd 2	ccd 3	ccd 5	ccd 6	ccd 7
grade 0 events	3283	3111	9420	13670	56035
	4%	4%	8%	16%	21%
grade 1 events	34	39	197	72	105
	0%	0%	0%	0%	0%
grade 2 events	1676	1458	14898	2935	58258
	2%	1%	13%	3%	22%
grade 3 events	827	839	1578	1234	21731
	1%	1%	1%	1%	8%
grade 4 events	831	830	1345	1207	21221
	1%	1%	1%	1%	8%
grade 5 events	2342	2908	5780	2977	7396
	3%	3%	5%	3%	2%
grade 6 events	1329	1374	27201	1937	56428
	1%	1%	25%	2%	21%
grade 7 events	63402	62801	46479	59749	41410
	85%	85%	43%	71%	15%

2.2 Compared Parameters

Parameter	Planned	Actual	Parameter	Planned	Actual
Instrument	ACIS	ACIS	Obspar format version number	6	6
Detector	ACIS-23567	ACIS-23567	Obspar file type	PREDICTED	ACTUAL
Grating	NONE	NONE	Obspar update status	NONE	UPDATED
Data mode	VFAINT	VFAINT	On-chip summing requested	N	N
Observation mode	POINTING	POINTING	Subarray requested	NONE	NONE
Pointing RA	207.235036	207.2292097082782	Alternating exposures requested	N	N
Pointing Dec	26.582991	26.60971641941316	Primary exposure time	0.000000	3.1
Pointing Roll	70.076944	70.23618036497577			
SIM focus pos (mm)	-0.684267	-0.6828225247311905			
SIM defocus (mm)	0	0.001444936568705701			
SIM translation stage pos (mm)	-190.132523	-190.1400660498719			
SIM translation stage offset (mm)	0	0.00754346686406393			
Observation start time	190484537.184000	190484161.1744			
Observation start date	2004-01-14T16:21:13	2004-01-14T16:16:01			
Observation end time	190499252.184000	190499800.62508			
Observation end date	2004-01-14T20:26:28	2004-01-14T20:36:40			
Read mode	TIMED	TIMED			

2.3 Aspect



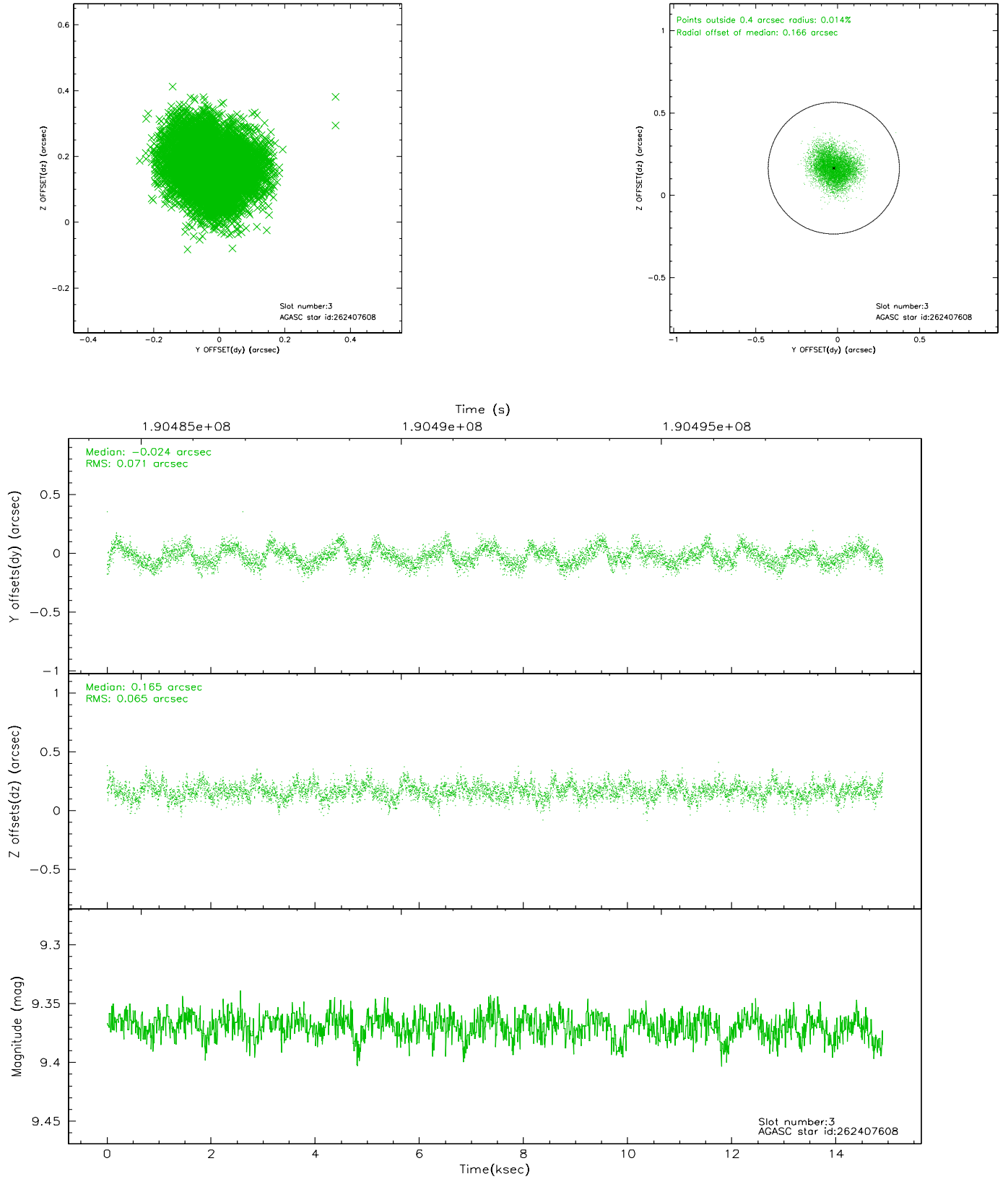


Slot Statistics

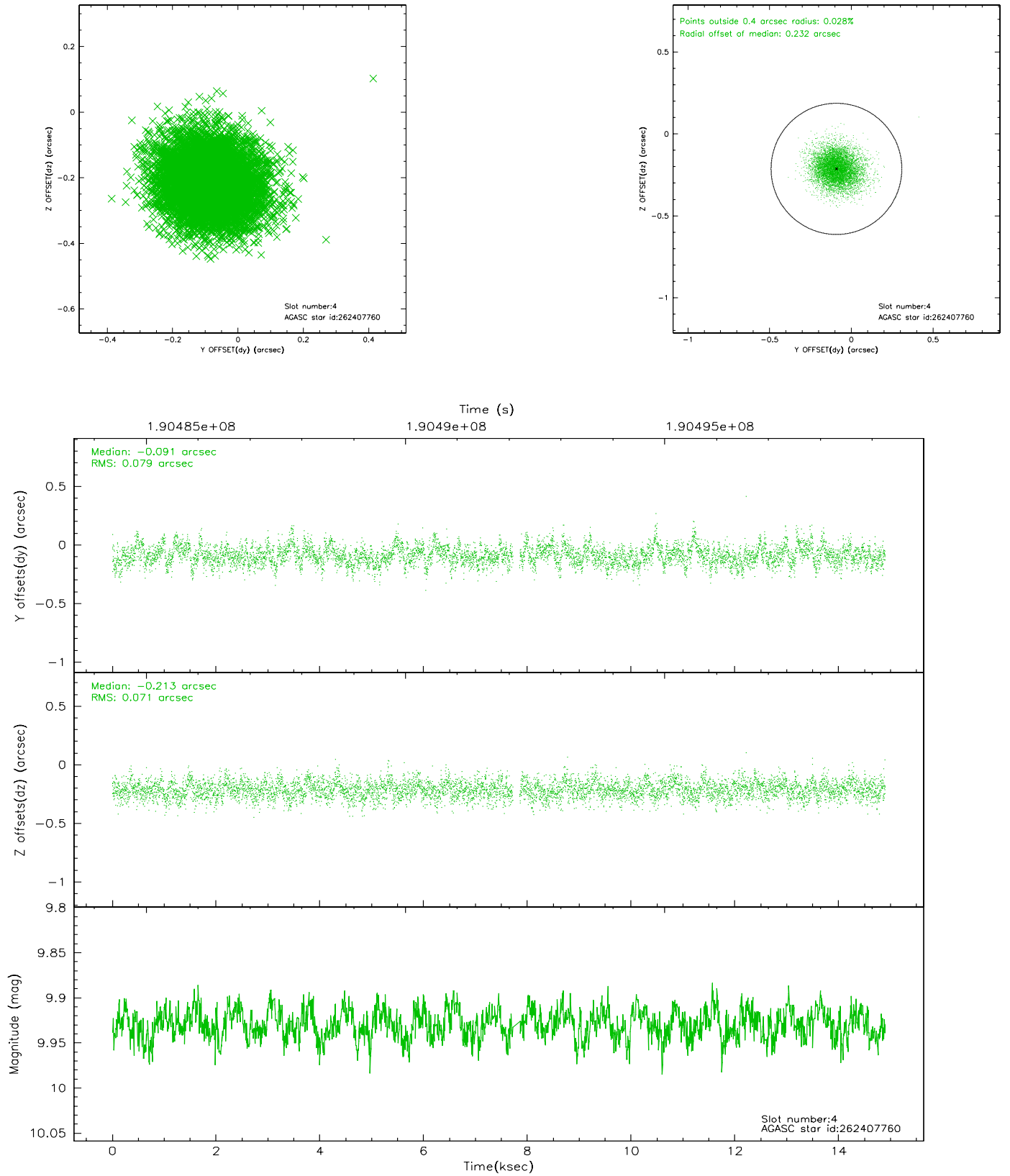
slot	status	id	mag	n_pts	med_dy	med_dz	dr1	dr2	ra	dec	mean_y	mean_z
0	FID	ACIS-S-2	7.10	3634	-0.037	-0.011	0.006	0.010	0.000000	0.000000	-759.24	-1730.69
1	FID	ACIS-S-4	7.20	3634	0.040	0.021	0.005	0.008	0.000000	0.000000	2153.96	177.54
2	FID	ACIS-S-5	7.23	3634	-0.033	-0.001	0.006	0.010	0.000000	0.000000	-1811.71	171.50
3	GUIDE	262407608	9.37	7266	-0.024	0.165	0.104	0.163	207.378401	26.435507	-341.17	-614.98
4	GUIDE	262407760	9.93	7197	-0.091	-0.213	0.113	0.185	206.566773	26.577263	-747.53	2017.71
5	GUIDE	262408096	9.35	7263	0.028	-0.018	0.080	0.131	207.011678	26.515421	-473.21	594.40
6	GUIDE	262408936	9.66	7259	-0.030	-0.096	0.096	0.157	207.154731	26.726554	398.04	419.13
7	GUIDE	262411960	9.69	7266	0.111	0.162	0.115	0.187	207.327895	25.881727	-2270.35	-1142.83

2.4 Star Slots

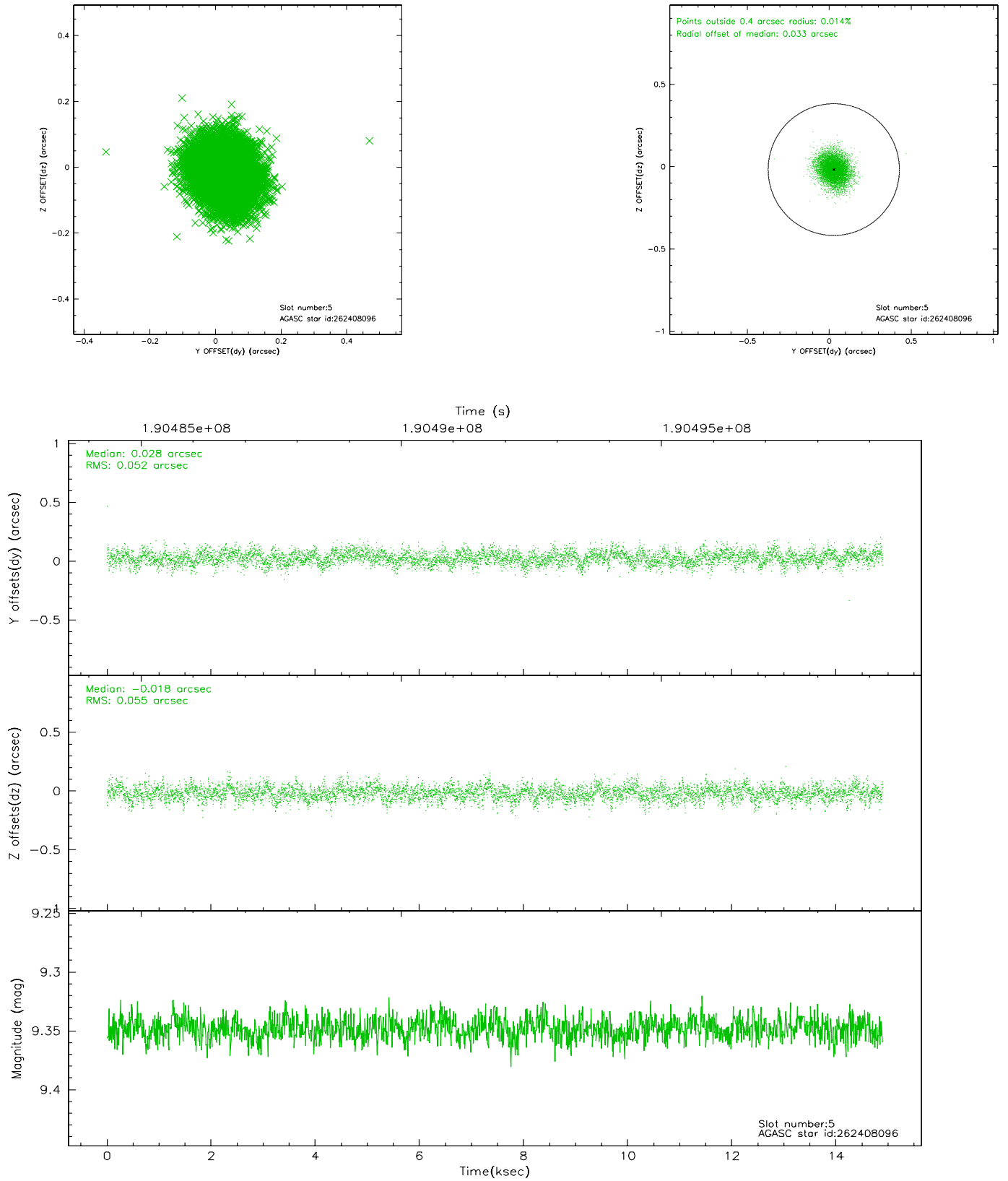
2.4.1 Slot 3



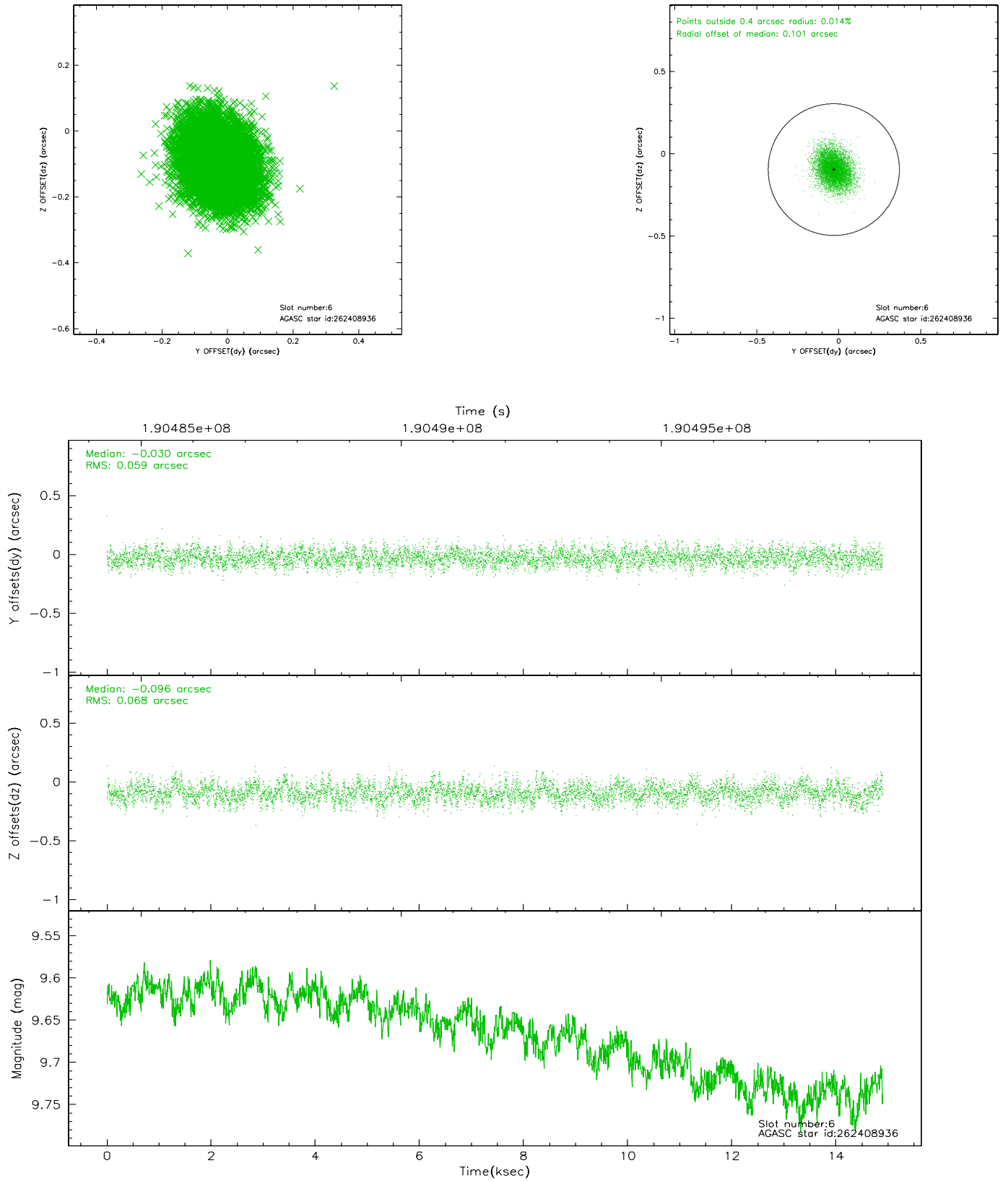
2.4.2 Slot 4



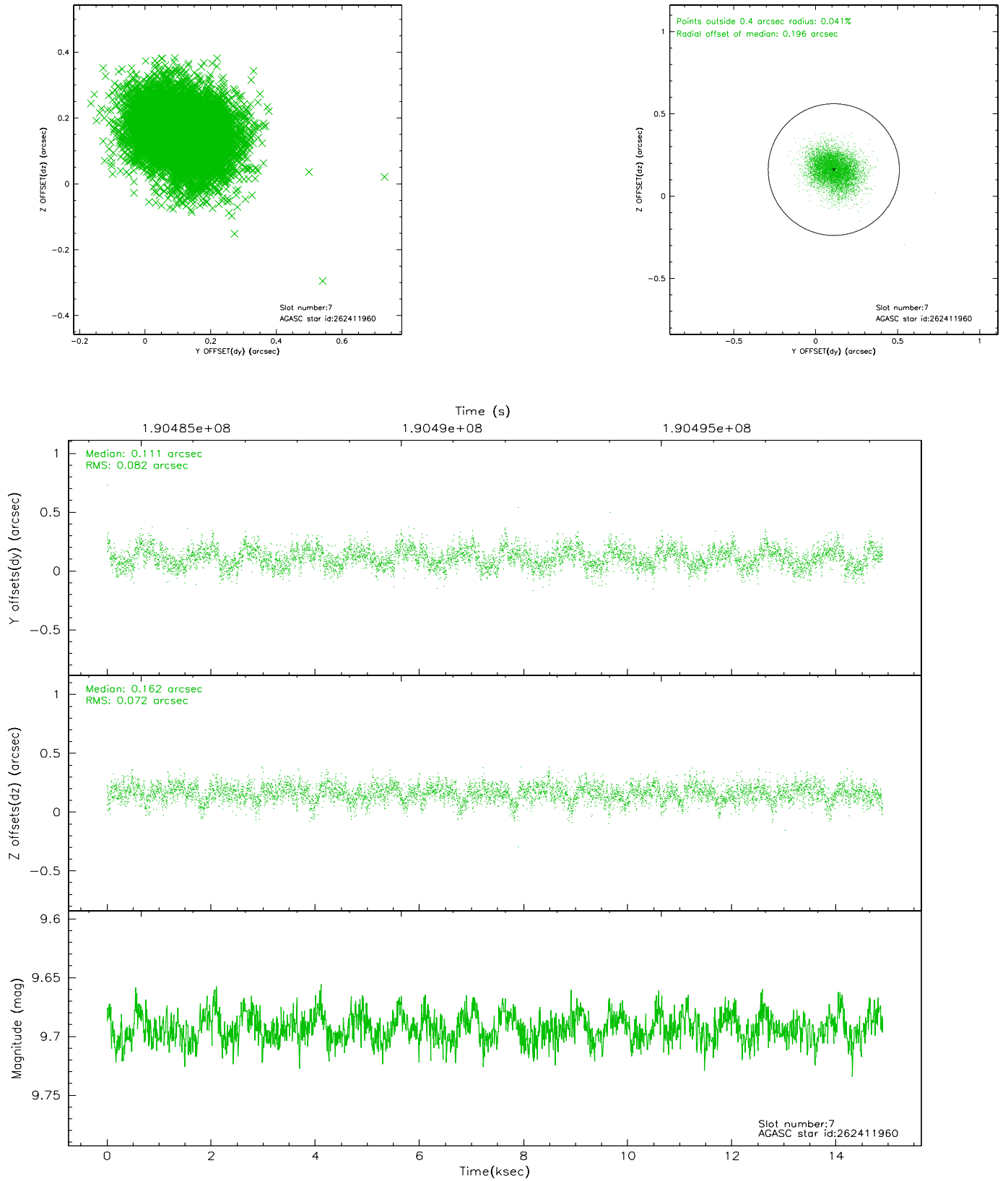
2.4.3 Slot 5



2.4.4 Slot 6

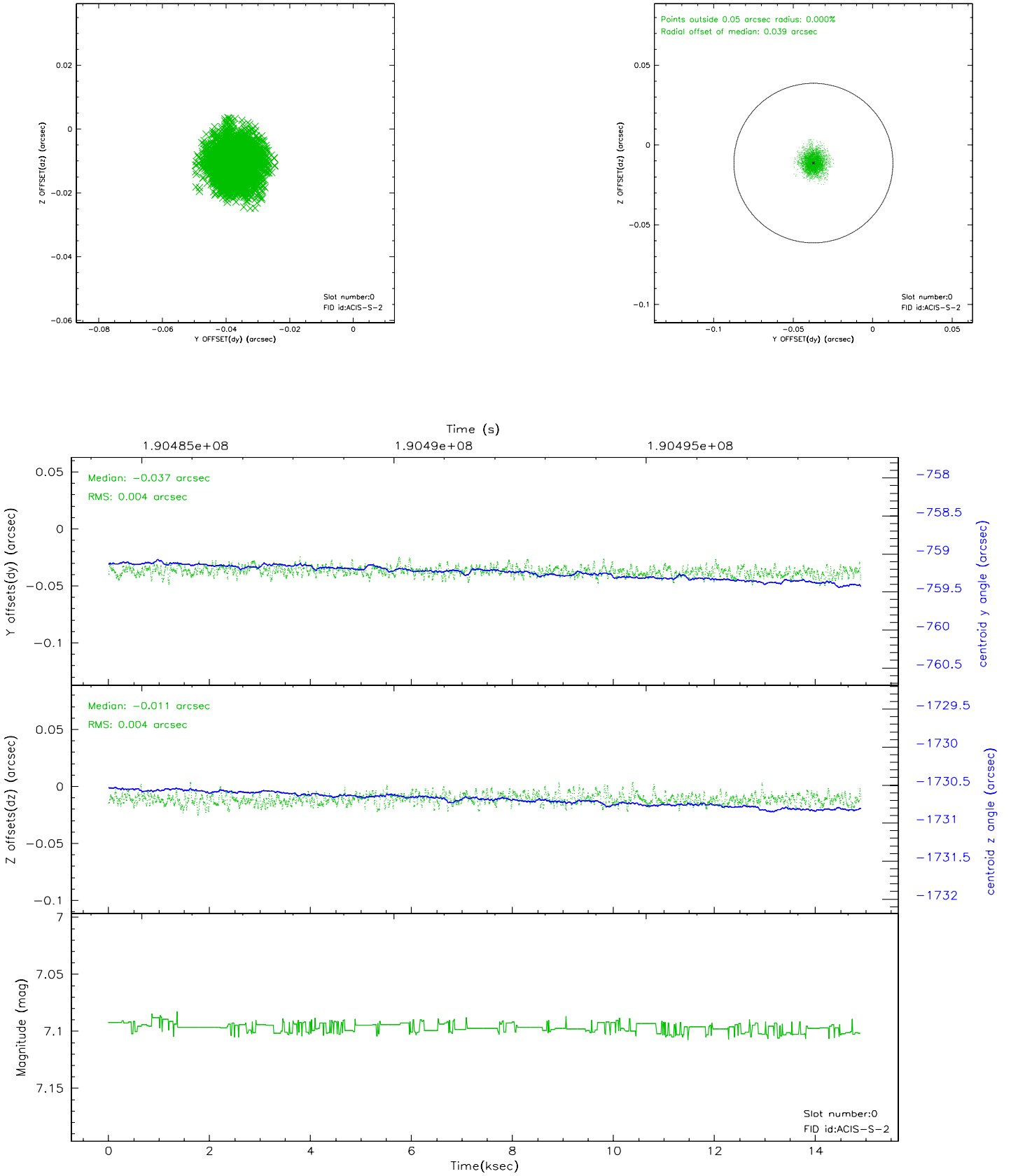


2.4.5 Slot 7

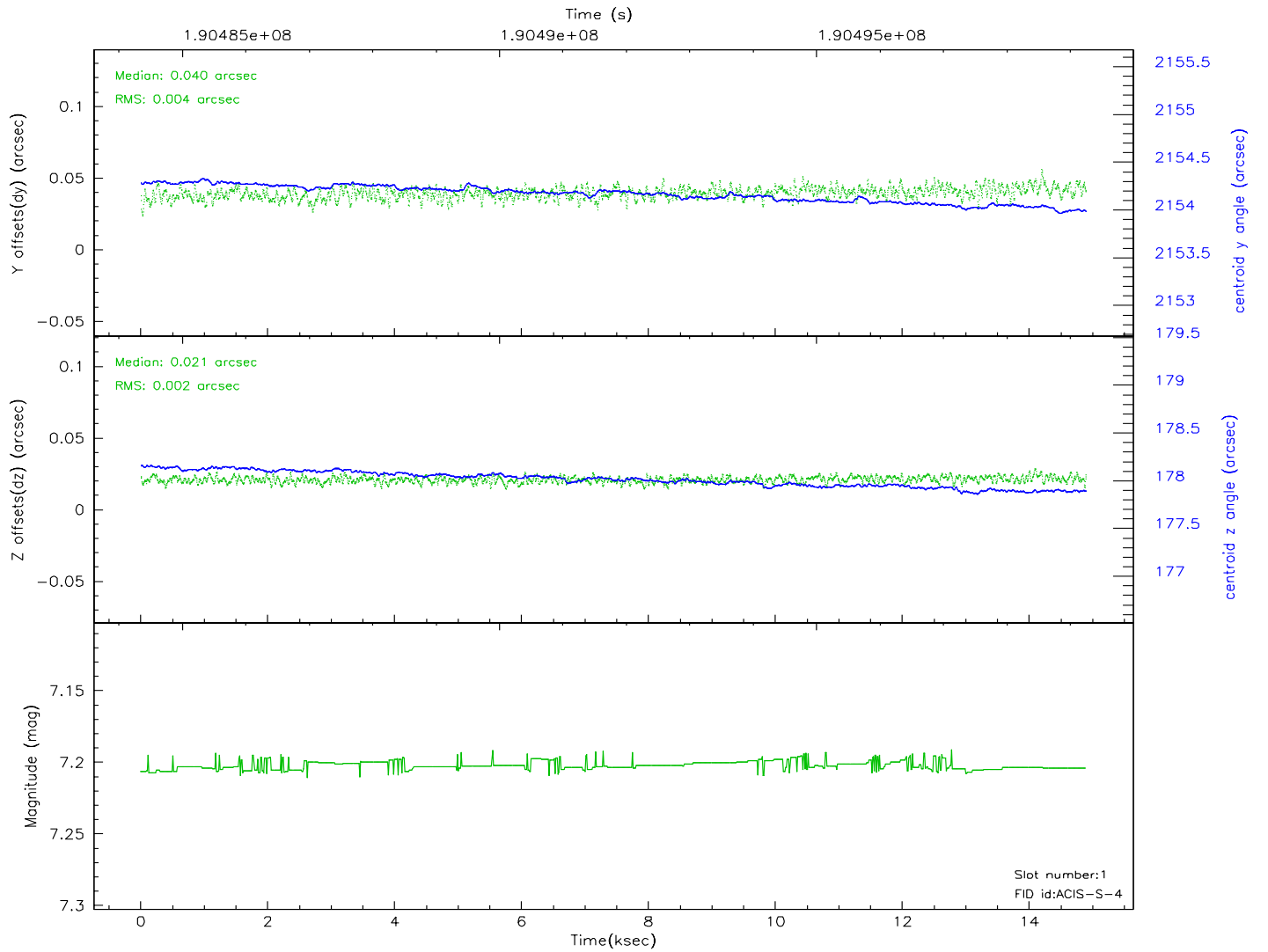
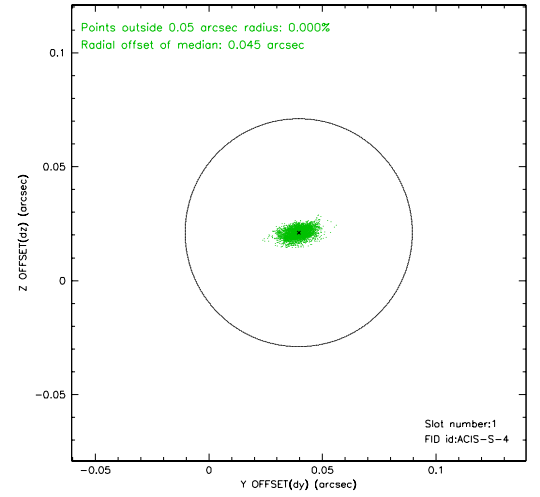
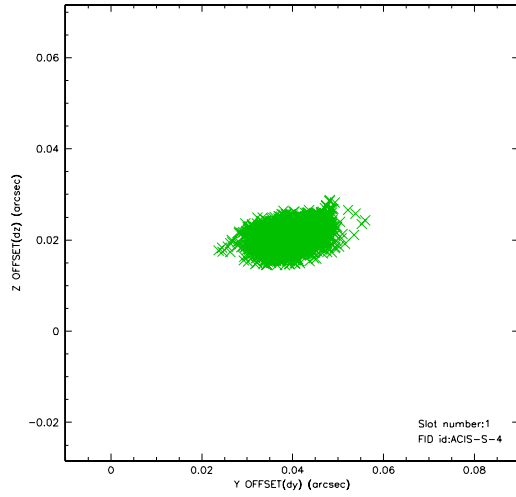


2.5 FID Slots

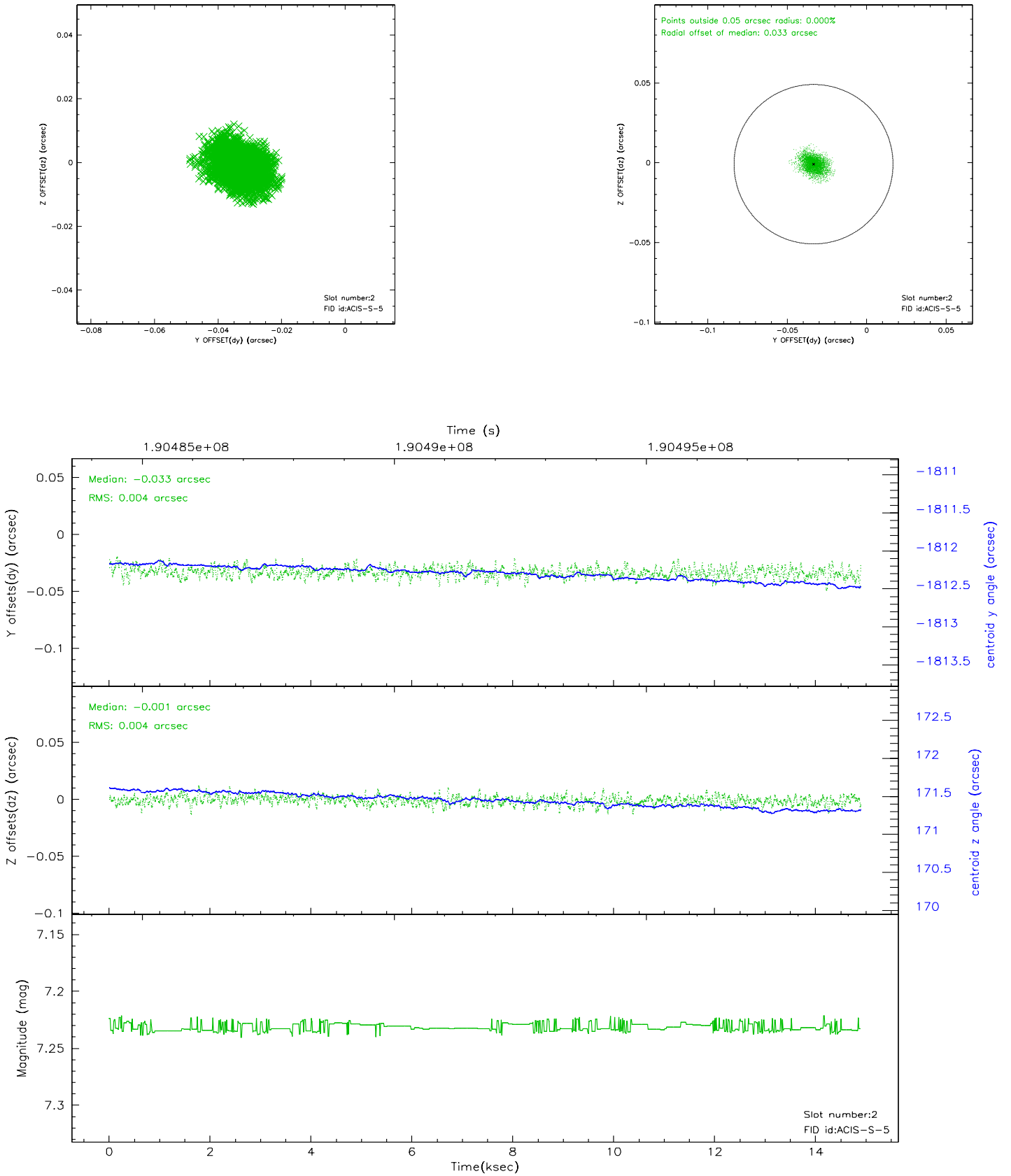
2.5.1 Slot 0



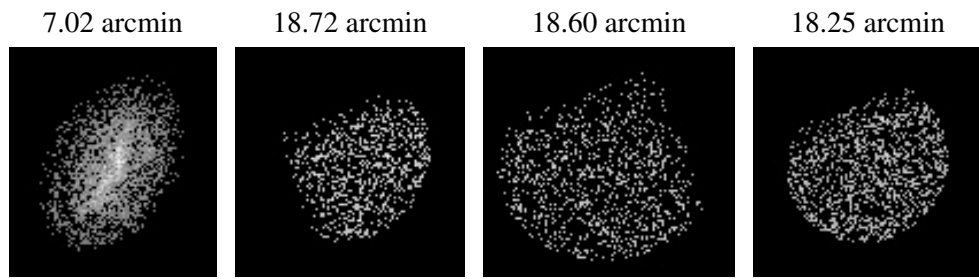
2.5.2 Slot 1



2.5.3 Slot 2



3 Point Sources



A Summary

A.1 Status

V&V Scientist	Jen Lauer
V&V Date (YYYY-MM-DD)	2006.06.07
V&V Edition	1
V&V Disposition and Status	OK
V&V Charge Time	14.492

A.2 Comments