

V&V Reference Report

L2 ASCDS Version : 10.2.4

Observation 52527 - L2 Version 1
Chandra X-Ray Center

L2 Processing Date : Aug 22 2014

Contents

1	Front	2
2	OBI	3
2.1	OBI	3
2.1.1	Images	3
2.1.2	Bias	3
2.1.3	Parameters	4
2.1.4	Events	4
2.2	Compared Parameters	5
2.3	Star Slots	6
2.4	FID Slots	6
A	Summary	7
A.1	Status	7
A.2	Comments	7

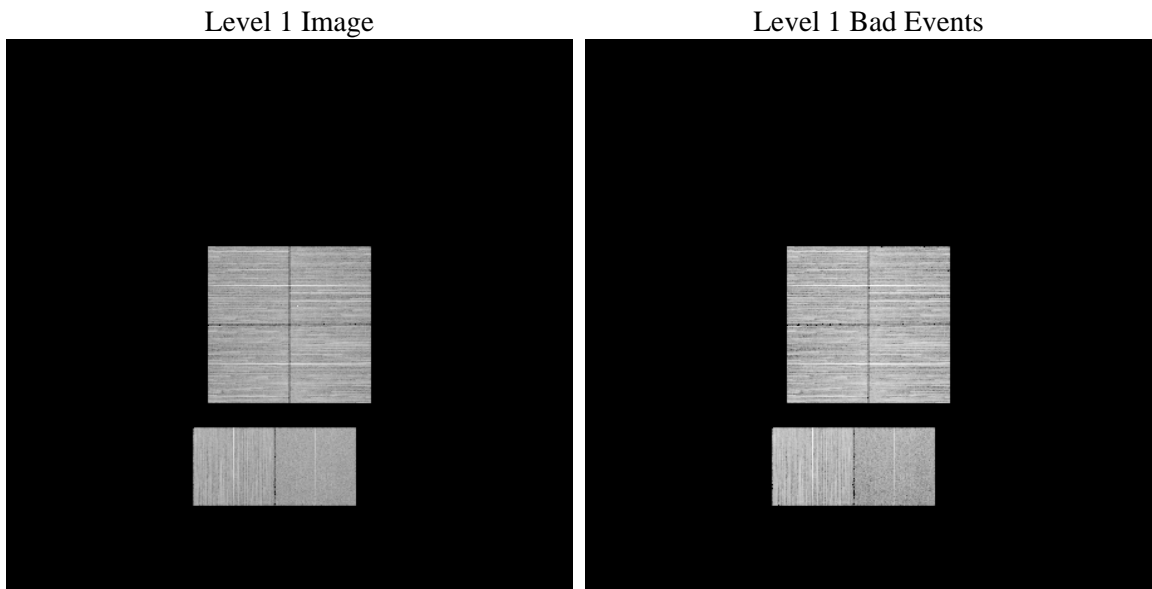
1 Front

seq_num	 	Sequence number
obs_id	52527	Observation id
title	ACIS-012367 diagnostics	Proposal title
observer	CHANDRA engineering request/realtime commanding	Principal investig
object	 	Source name
dtcycle	0	
cycle	P	events from which exps? Prim/Second/Both
ra_targ	0.0	Observer's specified target RA [deg]
dec_targ	0.0	Observer's specified target Dec [deg]
ra_nom	336.02899724739	Nominal RA [deg]
dec_nom	-35.978727108939	Nominal Dec [deg]
roll_nom	13.019907438445	Nominal Roll [deg]
revision	1	Processing version of data
ontime	8287.9999691844	Sum of GTIs [s]
livetime	8183.0523231401	Livetime [s]
ontime0	8287.9999691844	Sum of GTIs [s]
ontime1	8287.9999691844	Sum of GTIs [s]
ontime2	8287.9999691844	Sum of GTIs [s]
ontime3	8287.9999691844	Sum of GTIs [s]
ontime6	8287.9999691844	Sum of GTIs [s]
ontime7	8287.9999691844	Sum of GTIs [s]
l2events	182964	Number of level 2 events

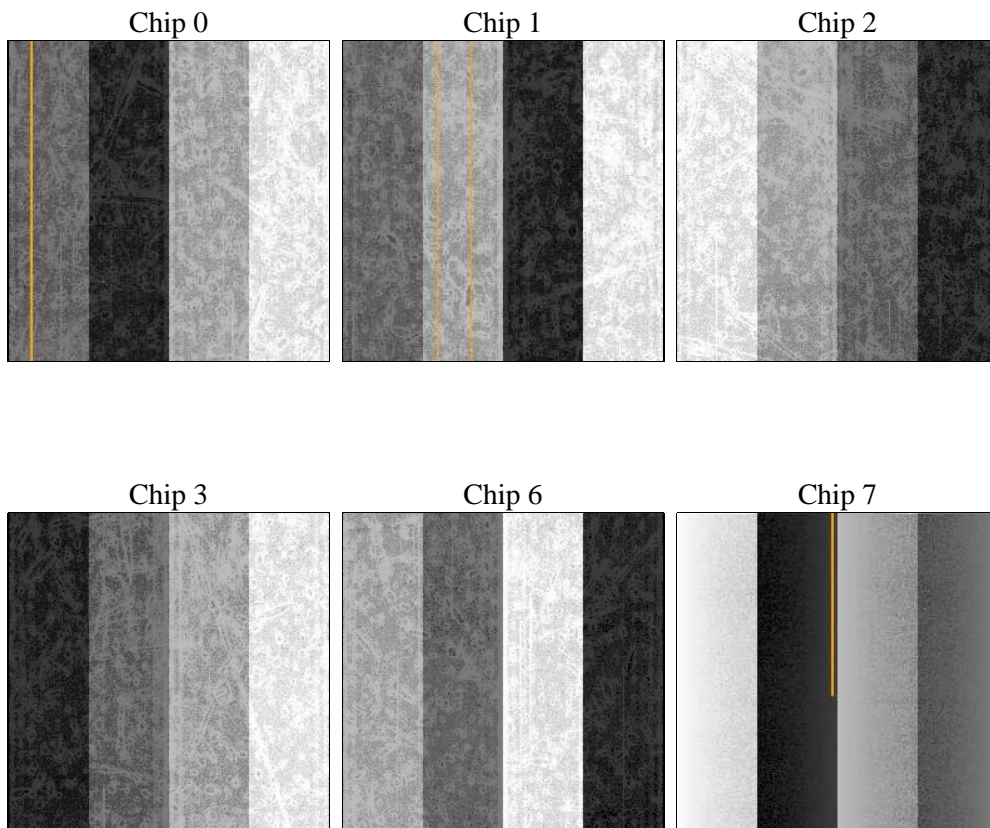
2 OBI

2.1 OBI

2.1.1 Images



2.1.2 Bias



2.1.3 Parameters

obi_num	0	Obi number	sched_exp_time	0.0	[s] Scheduled observation exposure time
ascdsver	10.2.4	Processing system revision	ontime	8287.9999691844	Sum of GTIs [s]
caldsver	4.6.2	 	ontime0	8287.9999691844	Sum of GTIs [s]
date	2014-08-22T16:10:20	Date and time of file creation	ontime1	8287.9999691844	Sum of GTIs [s]
revision	1	Processing version of data	ontime2	8287.9999691844	Sum of GTIs [s]
			ontime3	8287.9999691844	Sum of GTIs [s]
			ontime6	8287.9999691844	Sum of GTIs [s]
			ontime7	8287.9999691844	Sum of GTIs [s]
			l1events	878689	Number of level 1 events

2.1.4 Events

	ccd 0	ccd 1	ccd 2	ccd 3	ccd 6	ccd 7		ccd 0	ccd 1	ccd 2	ccd 3	ccd 6	ccd 7
level 1 events	146385	148427	145821	161089	153267	123700	grade 0 events	13578	12742	14096	14302	13498	7200
rejected events	118757	120185	118332	132918	124297	69699		9%	8%	9%	8%	8%	5%
rejected %	81%	80%	81%	82%	81%	56%	grade 1 events	77	62	83	85	69	93
								0%	0%	0%	0%	0%	0%
							grade 2 events	5782	6910	5284	5520	6292	13591
								3%	4%	3%	3%	4%	10%
							grade 3 events	1936	1843	1942	1938	1858	4086
								1%	1%	1%	1%	1%	3%
							grade 4 events	1874	1798	1839	1942	1861	4006
								1%	1%	1%	1%	1%	3%
							grade 5 events	2878	2950	2782	3197	2992	7401
								1%	1%	1%	1%	1%	5%
							grade 6 events	4458	4959	4343	4469	5485	25118
								3%	3%	2%	2%	3%	20%
							grade 7 events	115802	117163	115452	129636	121212	62205
								79%	78%	79%	80%	79%	50%

2.2 Compared Parameters

Parameter	Planned	Actual	Parameter	Planned	Actual
Instrument	ACIS	ACIS	Obspar format version number	7	7
Detector	ACIS-012367	ACIS-012367	Obspar file type	PREDICTED	ACTUAL
Grating	NONE	NONE	Obspar update status	NONE	UPDATED
Data mode	FAINT	FAINT	Number of optional ACIS chips dropped	0	0
Observation mode	SECONDARY	SECONDARY	On-chip summing requested	N	N
[deg] Pointing RA	0	336.028997247386	Subarray requested	NONE	NONE
[deg] Pointing Dec	0	-35.97872710893933	Alternating exposures requested	N	N
[deg] Pointing Roll	0.0	13.01990743844487	[s] Primary exposure time	3.2	3.2
[mm] SIM focus pos	-1.429586	-1.428180813131781			
[mm] SIM defocus	0.1037507710433287	0.1051558262725154			
[mm] SIM translation stage pos	250.455976	250.466033080201			
[mm] SIM translation stage offset	0	-0.01005468664627074			
[s] Observation start time (MET)	525030363.103945	525030362.07894			
Observation start date	2014-08-21T17:46:03	2014-08-21T17:46:02			
[s] Observation end time (MET)	525043772.154689	525043771.12969			
Observation end date	2014-08-21T21:29:32	2014-08-21T21:29:31			
Read mode	TIMED	TIMED			

2.3 Star Slots

2.4 FID Slots

A Summary

A.1 Status

V&V Scientist	Beth Sundheim
V&V Date (YYYY-MM-DD)	2014.08.22
V&V Edition	1
V&V Disposition and Status	OK
V&V Charge Time	8.2879999691844

A.2 Comments