

V&V Reference Report

L2 ASCDS Version : 10.4.1

Observation 51767 - L2 Version 1
Chandra X-Ray Center

L2 Processing Date : Jul 9 2015

Contents

1	Front	2
2	OBI	3
2.1	OBI	3
2.1.1	Images	3
2.1.2	Bias	3
2.1.3	Parameters	4
2.1.4	Events	4
2.2	Compared Parameters	5
2.3	Star Slots	6
2.4	FID Slots	6
A	Summary	7
A.1	Status	7
A.2	Comments	7

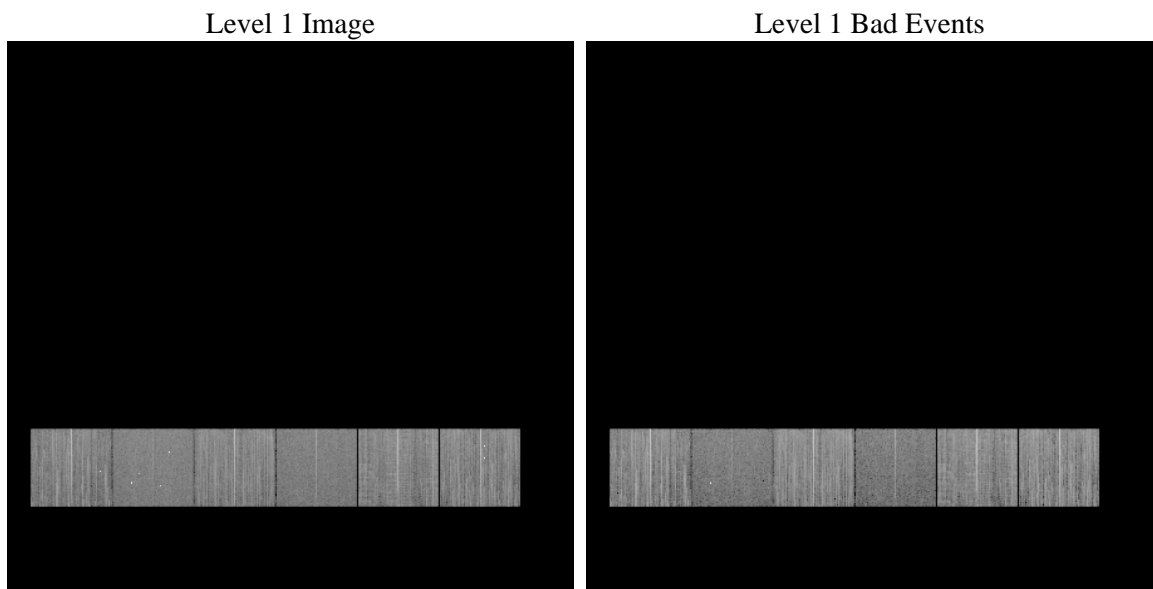
1 Front

seq_num	 	Sequence number
obs_id	51767	Observation id
title	ACIS-456789 diagnostics	Proposal title
observer	CHANDRA engineering request/realtime commanding	Principal investig
object	 	Source name
dtcycle	0	
cycle	P	events from which exps? Prim/Second/Both
ra_targ	0.0	Observer's specified target RA [deg]
dec_targ	0.0	Observer's specified target Dec [deg]
ra_nom	313.18270909712	Nominal RA [deg]
dec_nom	-24.775698048002	Nominal Dec [deg]
roll_nom	90.132301717861	Nominal Roll [deg]
revision	1	Processing version of data
ontime	8457.6001260281	Sum of GTIs [s]
livetime	8350.5049006769	Livetime [s]
ontime4	8457.6001260281	Sum of GTIs [s]
ontime5	8457.6001260281	Sum of GTIs [s]
ontime6	8457.6001260281	Sum of GTIs [s]
ontime7	8457.6001260281	Sum of GTIs [s]
ontime8	8457.6001260281	Sum of GTIs [s]
ontime9	8457.6001260281	Sum of GTIs [s]
l2events	184213	Number of level 2 events

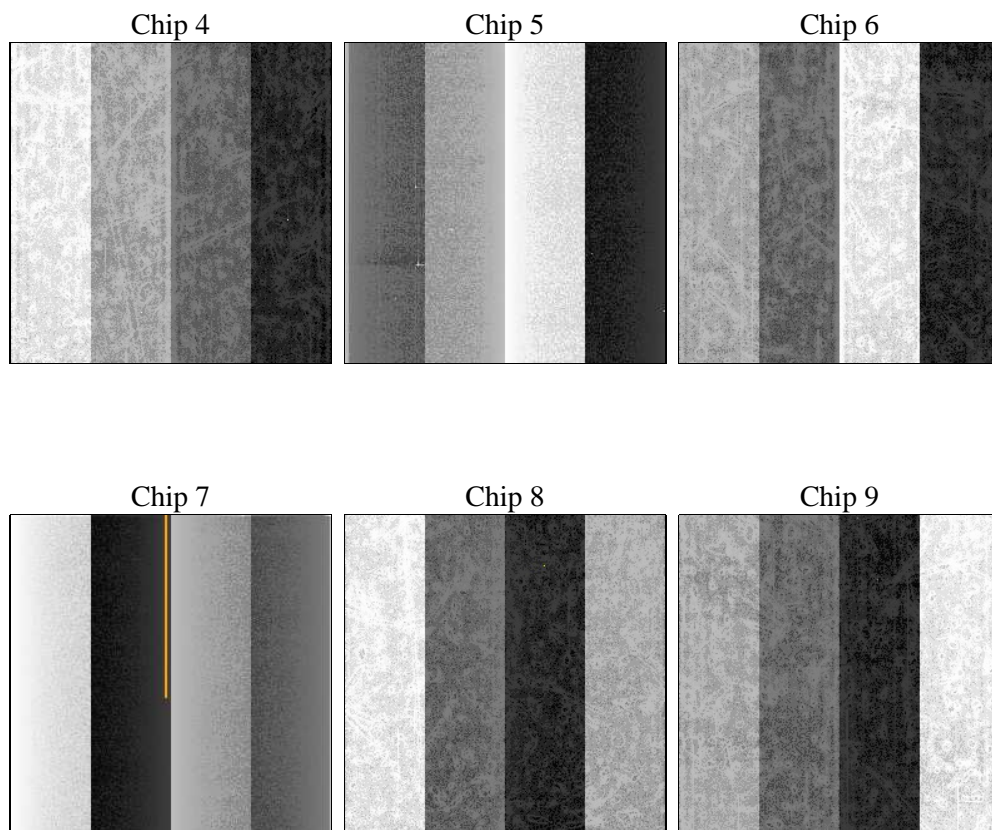
2 OBI

2.1 OBI

2.1.1 Images



2.1.2 Bias



2.1.3 Parameters

obi_num	1	Obi number	sched_exp_time	0.0	[s] Scheduled observation exposure time
ascdsver	10.4.1	Processing system revision	ontime	8457.6001260281	Sum of GTIs [s]
caldsver	4.6.8	 	ontime4	8457.6001260281	Sum of GTIs [s]
date	2015-07-09T11:07:21	Date and time of file creation	ontime5	8457.6001260281	Sum of GTIs [s]
revision	1	Processing version of data	ontime6	8457.6001260281	Sum of GTIs [s]
			ontime7	8457.6001260281	Sum of GTIs [s]
			ontime8	8457.6001260281	Sum of GTIs [s]
			ontime9	8457.6001260281	Sum of GTIs [s]
			l1events	887359	Number of level 1 events

2.1.4 Events

	ccd 4	ccd 5	ccd 6	ccd 7	ccd 8	ccd 9		ccd 4	ccd 5	ccd 6	ccd 7	ccd 8	ccd 9
level 1 events	148437	136335	159207	119011	160343	164026	grade 0 events	13613	7876	10944	5893	13833	15928
rejected events	123962	78210	135911	69806	126948	136154		9%	5%	6%	4%	8%	9%
rejected %	83%	57%	85%	58%	79%	83%	grade 1 events	117	96	52	70	88	85
								0%	0%	0%	0%	0%	0%
							grade 2 events	4503	20208	4926	11843	7021	4855
								3%	14%	3%	9%	4%	2%
							grade 3 events	1680	1770	1609	3859	2894	1533
								1%	1%	1%	3%	1%	0%
							grade 4 events	1585	1718	1577	3800	2759	1573
								1%	1%	0%	3%	1%	0%
							grade 5 events	3055	6356	3196	7681	4281	3589
								2%	4%	2%	6%	2%	2%
							grade 6 events	3094	26553	4240	23810	6888	3983
								2%	19%	2%	20%	4%	2%
							grade 7 events	120790	71758	132663	62055	122579	132480
								81%	52%	83%	52%	76%	80%

2.2 Compared Parameters

Parameter	Planned	Actual	Parameter	Planned	Actual
Instrument	ACIS	ACIS	Obspar format version number	7	7
Detector	ACIS-456789	ACIS-456789	Obspar file type	PREDICTED	ACTUAL
Grating	NONE	NONE	Obspar update status	NONE	UPDATED
Data mode	FAINT	FAINT	Number of optional ACIS chips dropped	0	0
Observation mode	SECONDARY	SECONDARY	On-chip summing requested	N	N
[deg] Pointing RA	0	313.182709097124	Subarray requested	NONE	NONE
[deg] Pointing Dec	0	-24.77569804800231	Alternating exposures requested	N	N
[deg] Pointing Roll	0.0	90.13230171786086	[s] Primary exposure time	3.2	3.2
[mm] SIM focus pos	-1.429586	-0.6828225247311905			
[mm] SIM defocus	0.1037507710433287	0.8505141146731063			
[mm] SIM translation stage pos	250.455976	250.466033080201			
[mm] SIM translation stage offset	0	-0.01005468664627074			
[s] Observation start time (MET)	552717326.400105	552717325.3751			
Observation start date	2015-07-08T04:35:26	2015-07-08T04:35:25			
[s] Observation end time (MET)	552727506.700677	552727505.67568			
Observation end date	2015-07-08T07:25:07	2015-07-08T07:25:05			
Read mode	TIMED	TIMED			

2.3 Star Slots

2.4 FID Slots

A Summary

A.1 Status

V&V Scientist	Jen Lauer
V&V Date (YYYY-MM-DD)	2015.07.09
V&V Edition	1
V&V Disposition and Status	OK
V&V Charge Time	8.4576001260281

A.2 Comments