

# V&V Reference Report

## L2 ASCDS Version : 7.6.7.2

Observation 5017 - L2 Version 001  
Chandra X-Ray Center

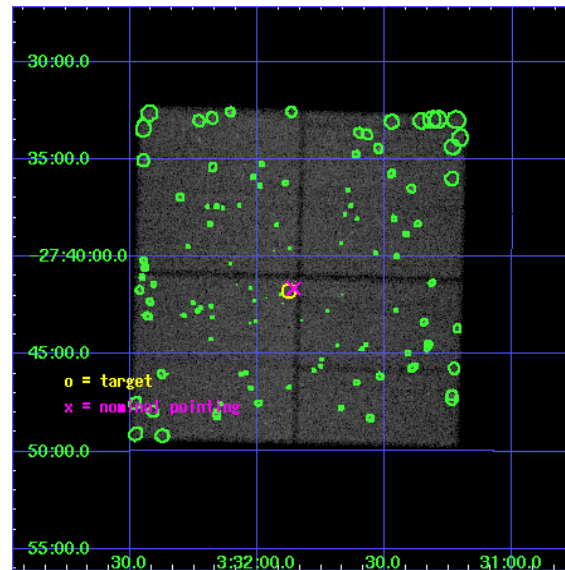
L2 Processing Date : May 18 2006

## Contents

<b>1</b>	<b>Front</b>	<b>2</b>
<b>2</b>	<b>OBI</b>	<b>3</b>
2.1	OBI . . . . .	3
2.1.1	Images . . . . .	3
2.1.2	Bias . . . . .	3
2.1.3	Parameters . . . . .	4
2.1.4	Events . . . . .	4
2.2	Compared Parameters . . . . .	5
2.3	Aspect . . . . .	6
2.4	Star Slots . . . . .	9
2.4.1	Slot 3 . . . . .	9
2.4.2	Slot 4 . . . . .	10
2.4.3	Slot 5 . . . . .	11
2.4.4	Slot 6 . . . . .	12
2.4.5	Slot 7 . . . . .	13
2.5	FID Slots . . . . .	14
2.5.1	Slot 0 . . . . .	14
2.5.2	Slot 1 . . . . .	15
2.5.3	Slot 2 . . . . .	16
<b>3</b>	<b>Point Sources</b>	<b>17</b>
<b>A</b>	<b>Summary</b>	<b>18</b>
A.1	Status . . . . .	18
A.2	Comments . . . . .	18

# 1 Front

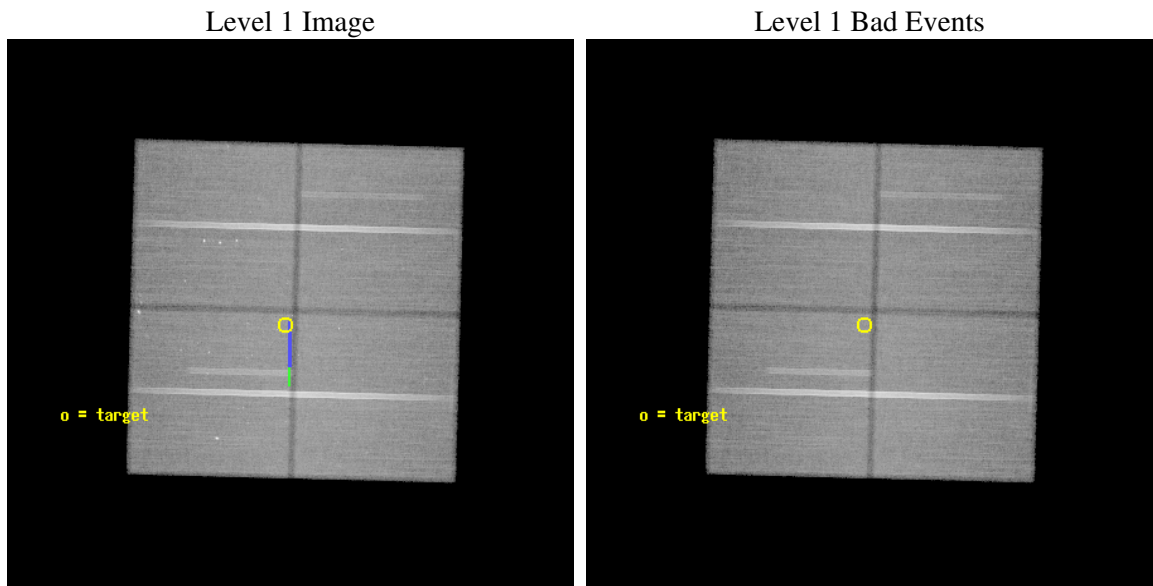
seq_num	900327
obs_id	5017
title	The Extended Chandra Deep Field-South Survey: A Public Chandra Legacy
observer	Prof. William Brandt
object	Extended CDF-S #2
dtcycle	0
cycle	P
ra_targ	52.96915
dec_targ	-27.69581
ra_nom	52.964290310704
dec_nom	-27.69411047644
roll_nom	181.50642557446
revision	2
ontime	157507.48997492
livetime	155449.53866307
ontime0	157529.47680637
ontime1	157523.19474632
ontime2	157529.47680634
ontime3	157507.48997492
l2events	297300



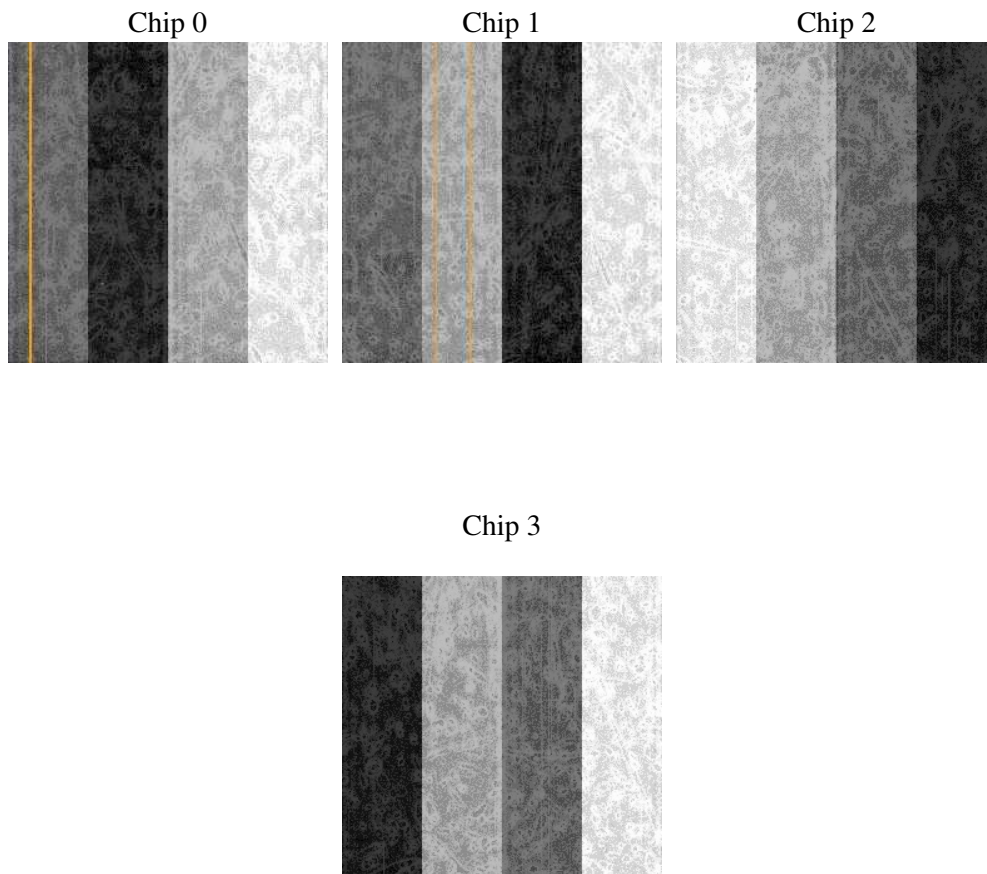
## 2 OBI

### 2.1 OBI

#### 2.1.1 Images



#### 2.1.2 Bias



### 2.1.3 Parameters

obi_num	0
ascdsver	7.6.7.2
caldbver	3.2.2
date	2006-05-18T05:52:01
revision	2

sched_exp_time	157291.005000
ontime	157511.75686562
ontime0	157533.74369708
ontime1	157527.46163702
ontime2	157533.74369705
ontime3	157511.75686562
l1events	3538709

### 2.1.4 Events

	<b>ccd 0</b>	<b>ccd 1</b>	<b>ccd 2</b>	<b>ccd 3</b>
level 1 events	842371	841271	945370	909697
rejected events	753143	743736	857817	821183
rejected %	89%	88%	90%	90%

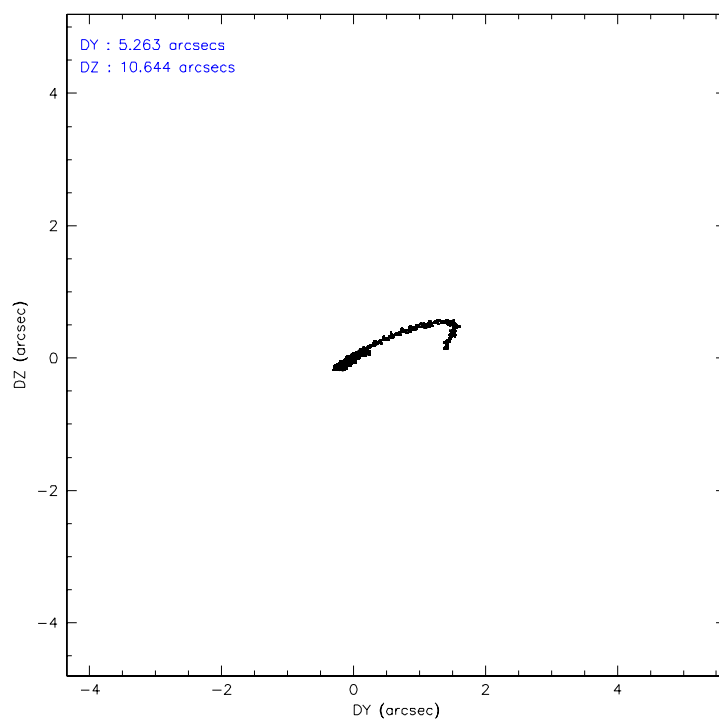
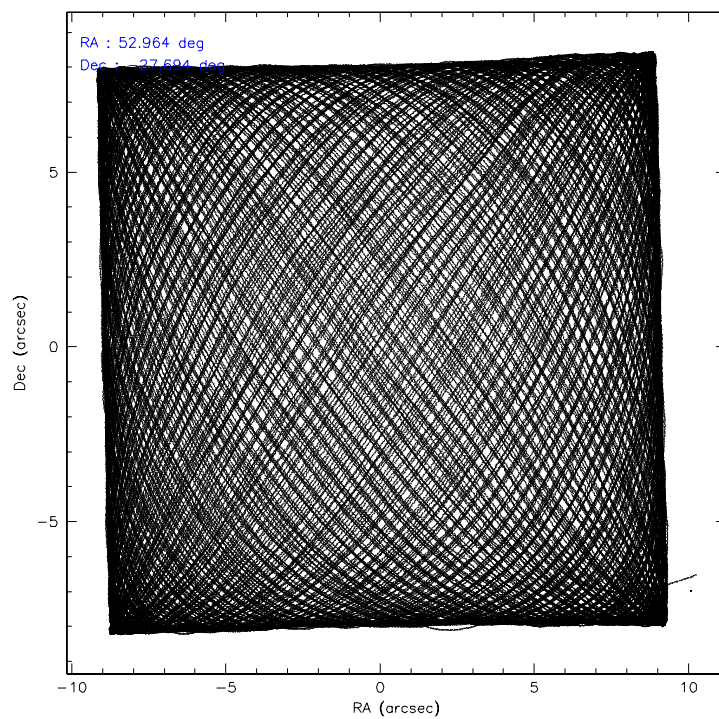
	<b>ccd 0</b>	<b>ccd 1</b>	<b>ccd 2</b>	<b>ccd 3</b>
grade 0 events	32225	36083	33000	35015
	3%	4%	3%	3%
grade 1 events	442	404	448	528
	0%	0%	0%	0%
grade 2 events	20594	20246	20250	18356
	2%	2%	2%	2%
grade 3 events	10481	11414	9641	9841
	1%	1%	1%	1%
grade 4 events	9705	11127	9640	9716
	1%	1%	1%	1%
grade 5 events	26503	28415	24762	29995
	3%	3%	2%	3%
grade 6 events	16223	18667	15026	15587
	1%	2%	1%	1%
grade 7 events	726198	714915	832603	790659
	86%	84%	88%	86%

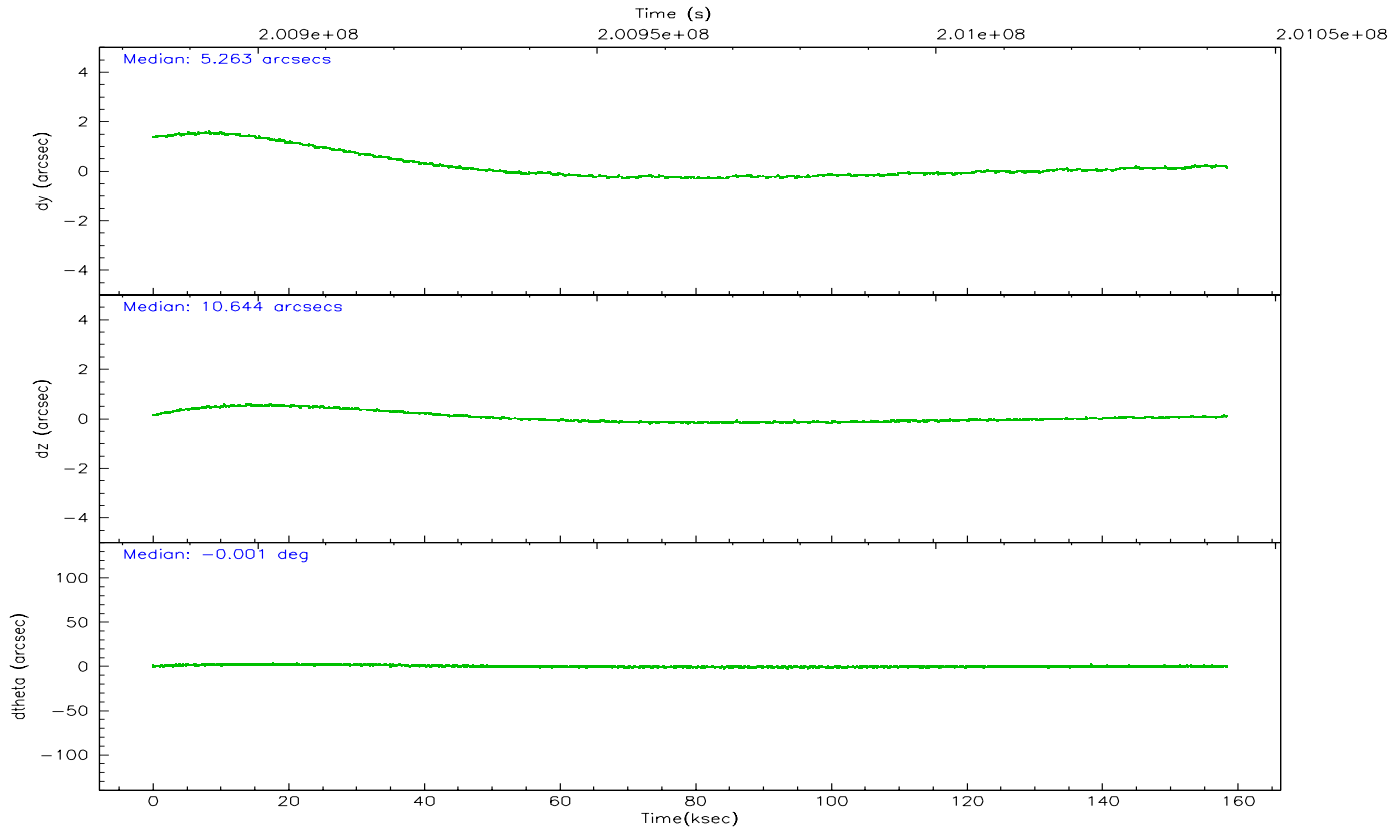
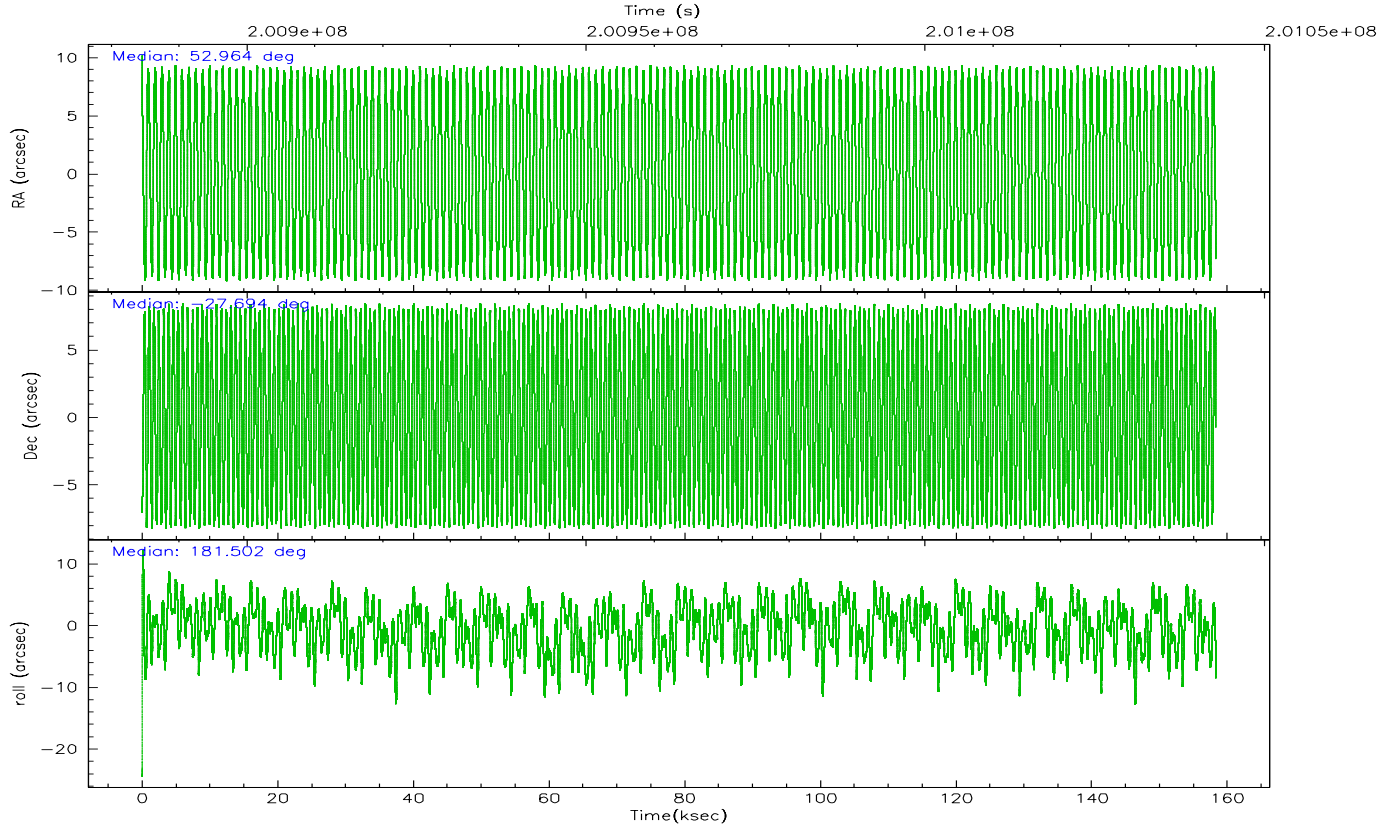


## 2.2 Compared Parameters

Parameter	Planned	Actual	Parameter	Planned	Actual
Instrument	ACIS	ACIS	Obspar format version number	6	6
Detector	ACIS-0123	ACIS-0123	Obspar file type	PREDICTED	ACTUAL
Grating	NONE	NONE	Obspar update status	NONE	UPDATED
Data mode	VFAINT	VFAINT	On-chip summing requested	N	N
Observation mode	POINTING	POINTING	Subarray requested	NONE	NONE
Pointing RA	52.990571	52.9642903107042	Alternating exposures requested	N	N
Pointing Dec	-27.679702	-27.69411047644008	Primary exposure time	0.000000	3.1
Pointing Roll	181.309948	181.5064255744619			
Roll angle	180.000000	180.000000			
Roll tolerance	2.000000	2.000000			
Roll constraint allows 180D rotation	N	N			
SIM focus pos (mm)	-0.782348	-0.7809083437167272			
SIM defocus (mm)	0	0.001439871863259334			
SIM translation stage pos (mm)	-233.592463	-233.5874344608287			
SIM translation stage offset (mm)	0	-0.005018542100998502			
Observation start time	200885614.184000	200884209.33073			
Observation start date	2004-05-14T01:32:30	2004-05-14T01:10:09			
Observation end time	201042905.184000	201043219.12525			
Observation end date	2004-05-15T21:14:01	2004-05-15T21:20:19			
Read mode	TIMED	TIMED			

## 2.3 Aspect



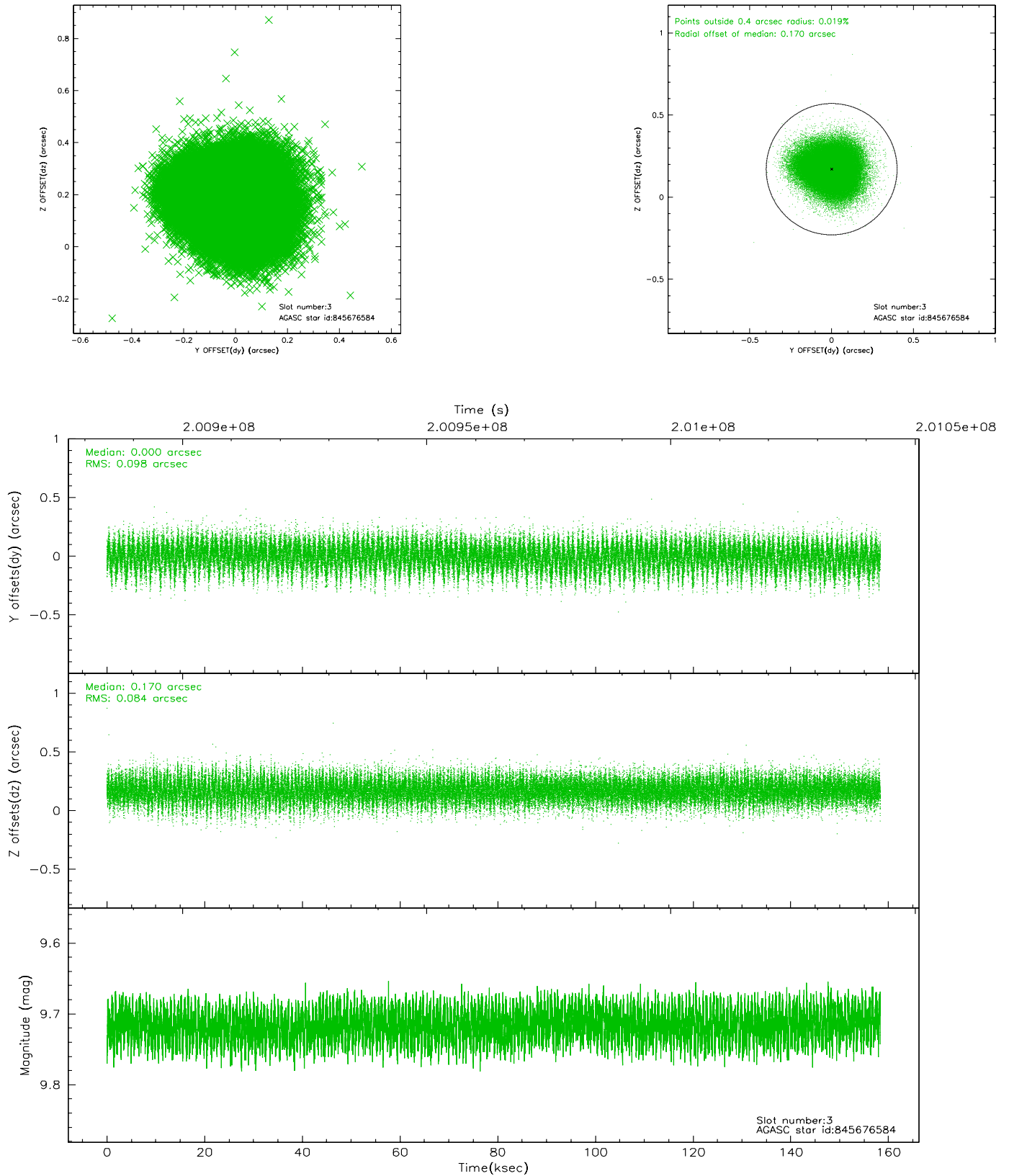


### Slot Statistics

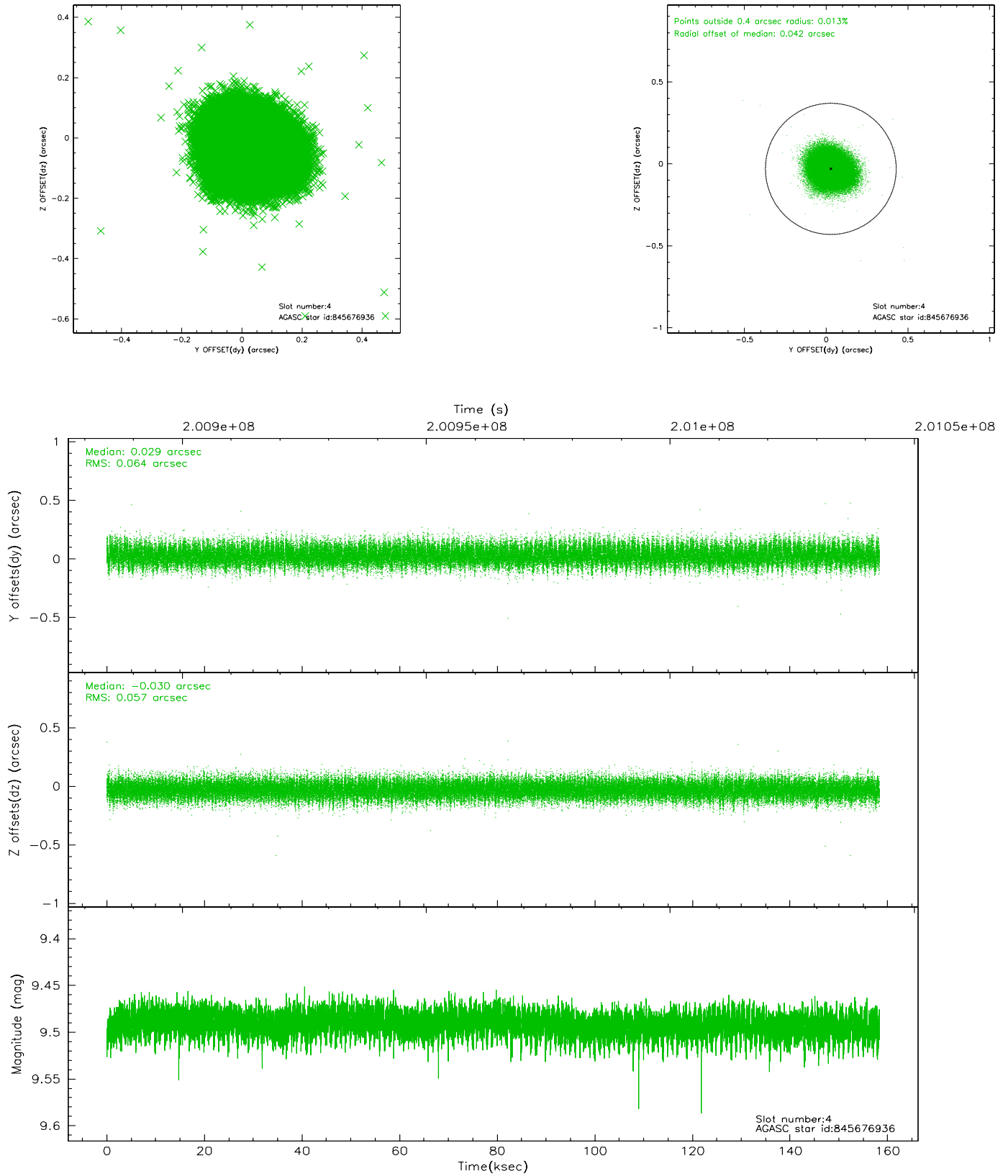
slot	status	id	mag	n_pts	med_dy	med_dz	dr1	dr2	ra	dec	mean_y	mean_z
0	FID	ACIS-I-1	7.24	38624	0.013	0.015	0.009	0.015	0.000000	0.000000	934.23	-834.21
1	FID	ACIS-I-5	7.23	38625	-0.143	0.041	0.011	0.029	0.000000	0.000000	-1814.07	1063.40
2	FID	ACIS-I-6	7.25	38623	0.038	0.014	0.012	0.024	0.000000	0.000000	399.95	1707.72
3	GUIDE	845676584	9.72	77196	0.000	0.170	0.139	0.222	52.264247	-27.542890	2307.10	-538.18
4	GUIDE	845676936	9.49	77183	0.029	-0.030	0.092	0.149	52.843773	-27.880153	483.69	711.04
5	GUIDE	845683408	9.21	77203	-0.004	-0.200	0.099	0.158	52.484531	-28.338862	1657.55	2339.15
6	GUIDE	845807880	8.82	77223	0.006	-0.046	0.070	0.113	53.382027	-27.886093	-1227.94	773.22
7	GUIDE	845414752	10.72	77053	-0.031	0.106	0.178	0.299	53.035275	-27.097593	-190.91	-2091.61

## 2.4 Star Slots

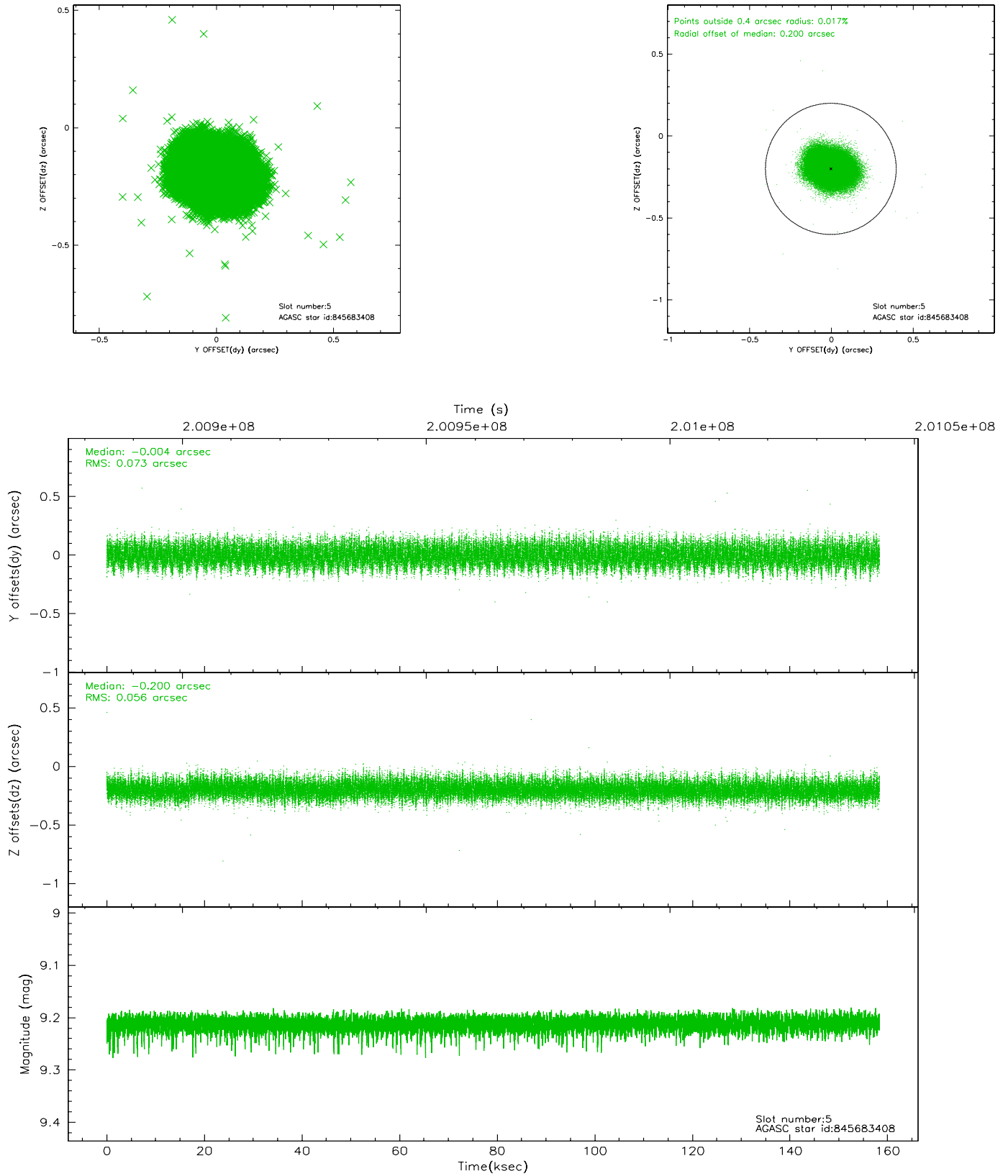
### 2.4.1 Slot 3



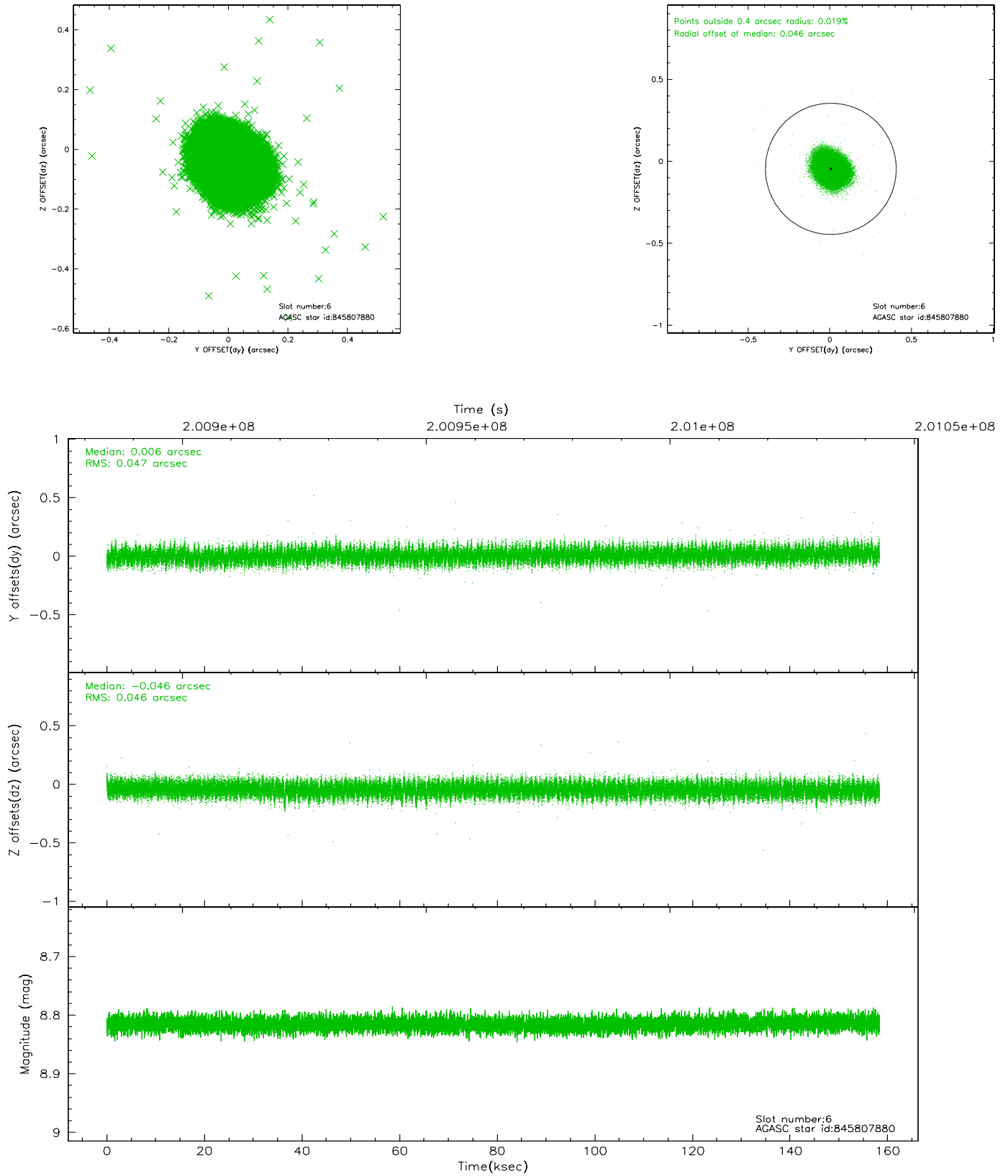
## 2.4.2 Slot 4



### 2.4.3 Slot 5

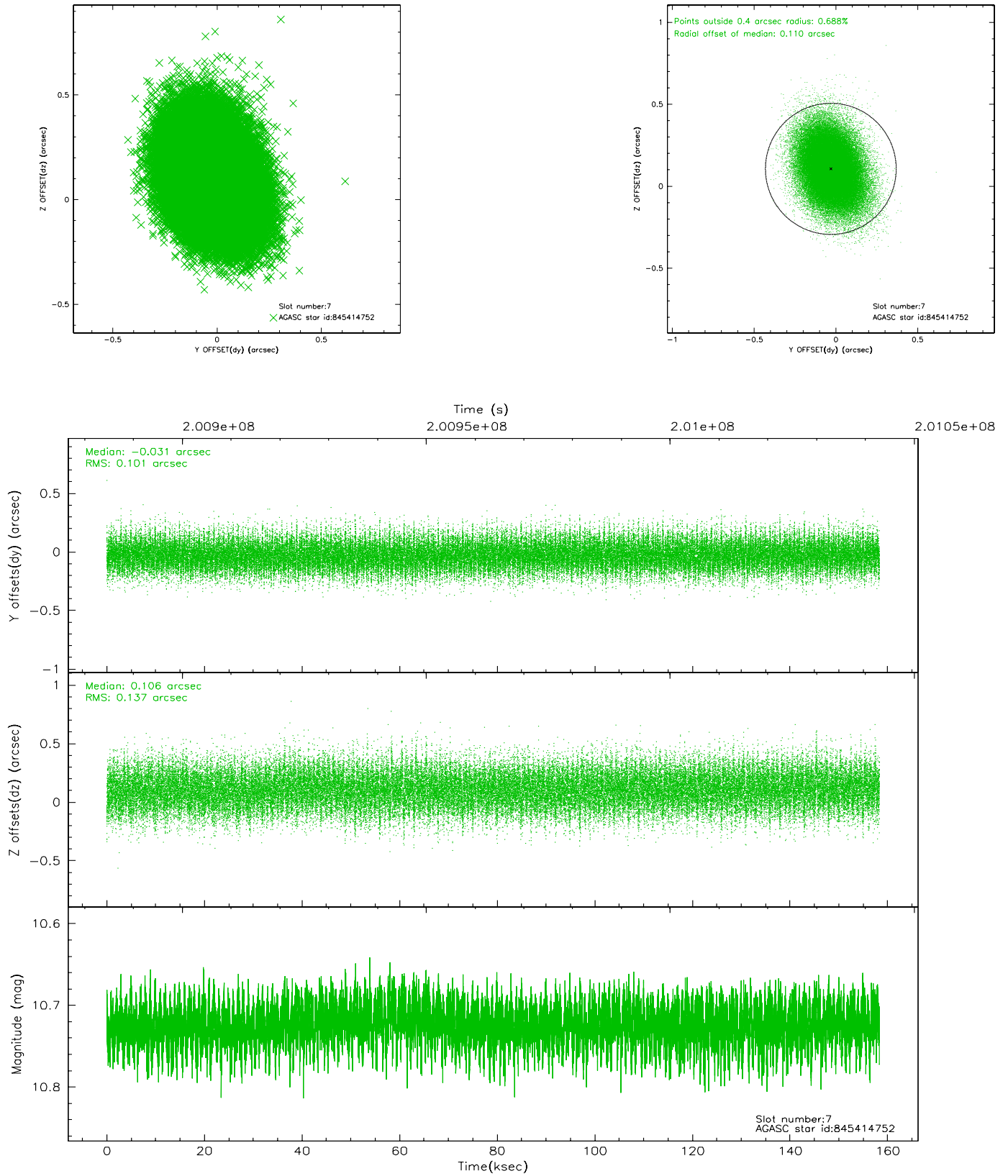


## 2.4.4 Slot 6



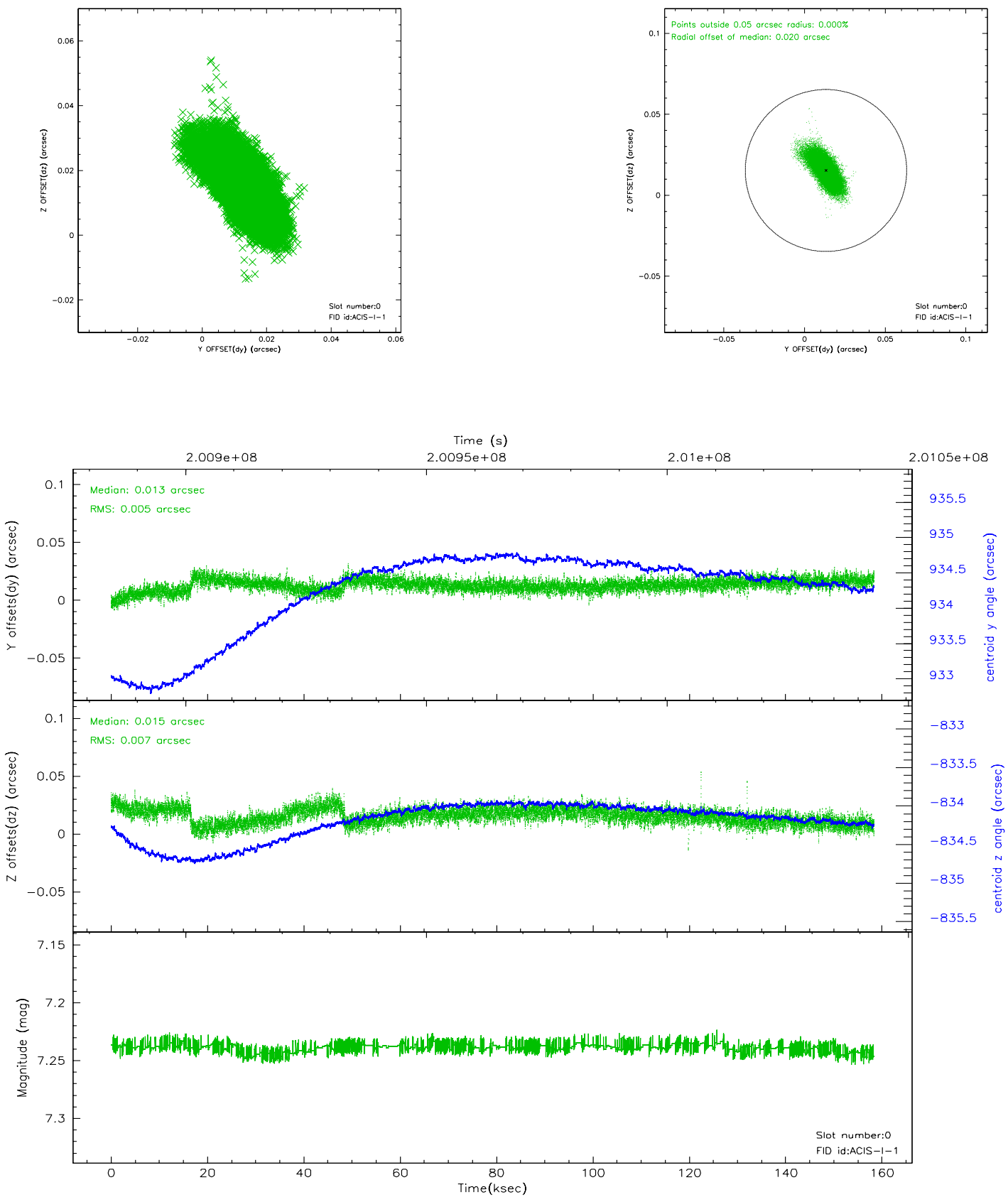


## 2.4.5 Slot 7

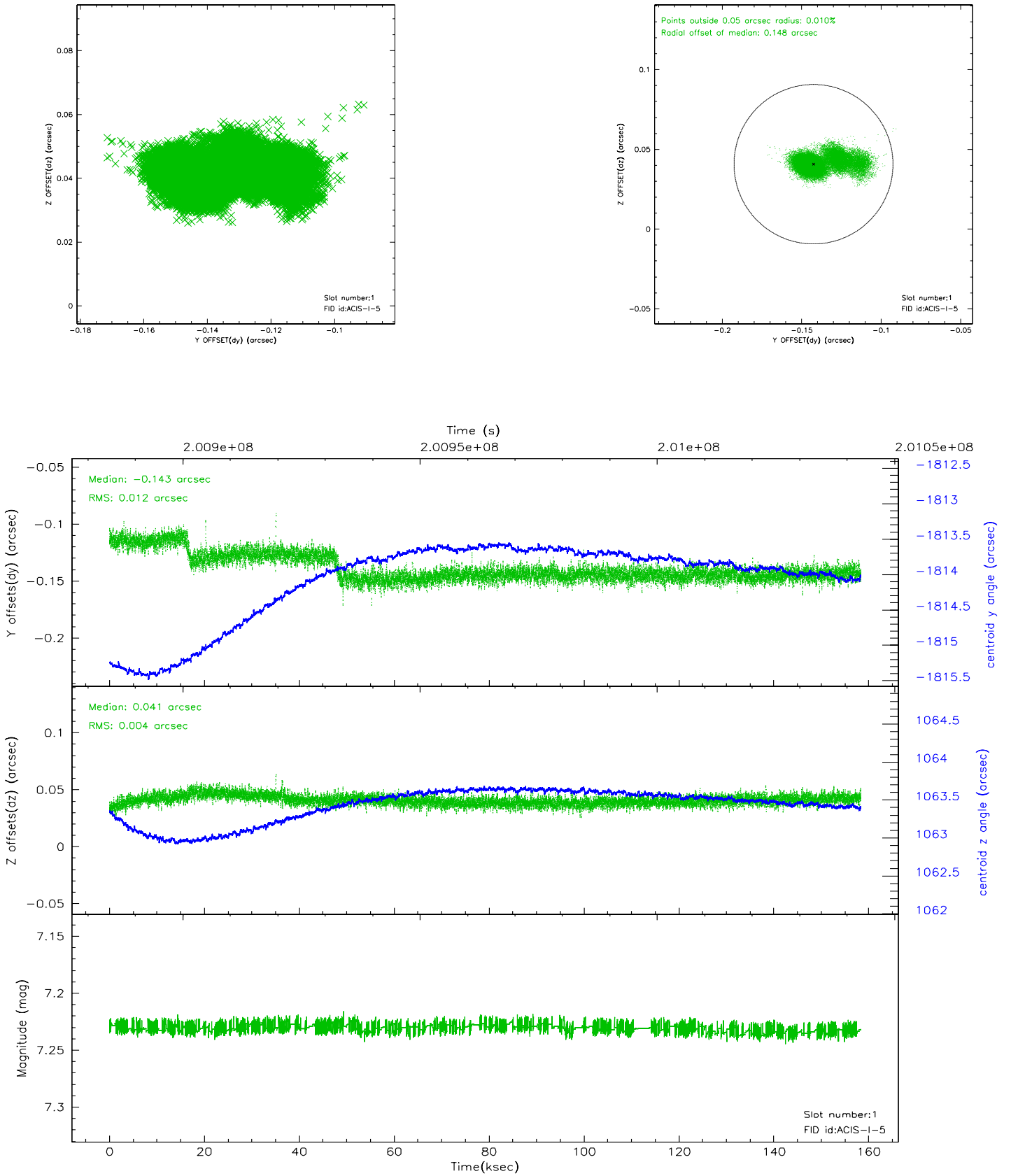


## 2.5 FID Slots

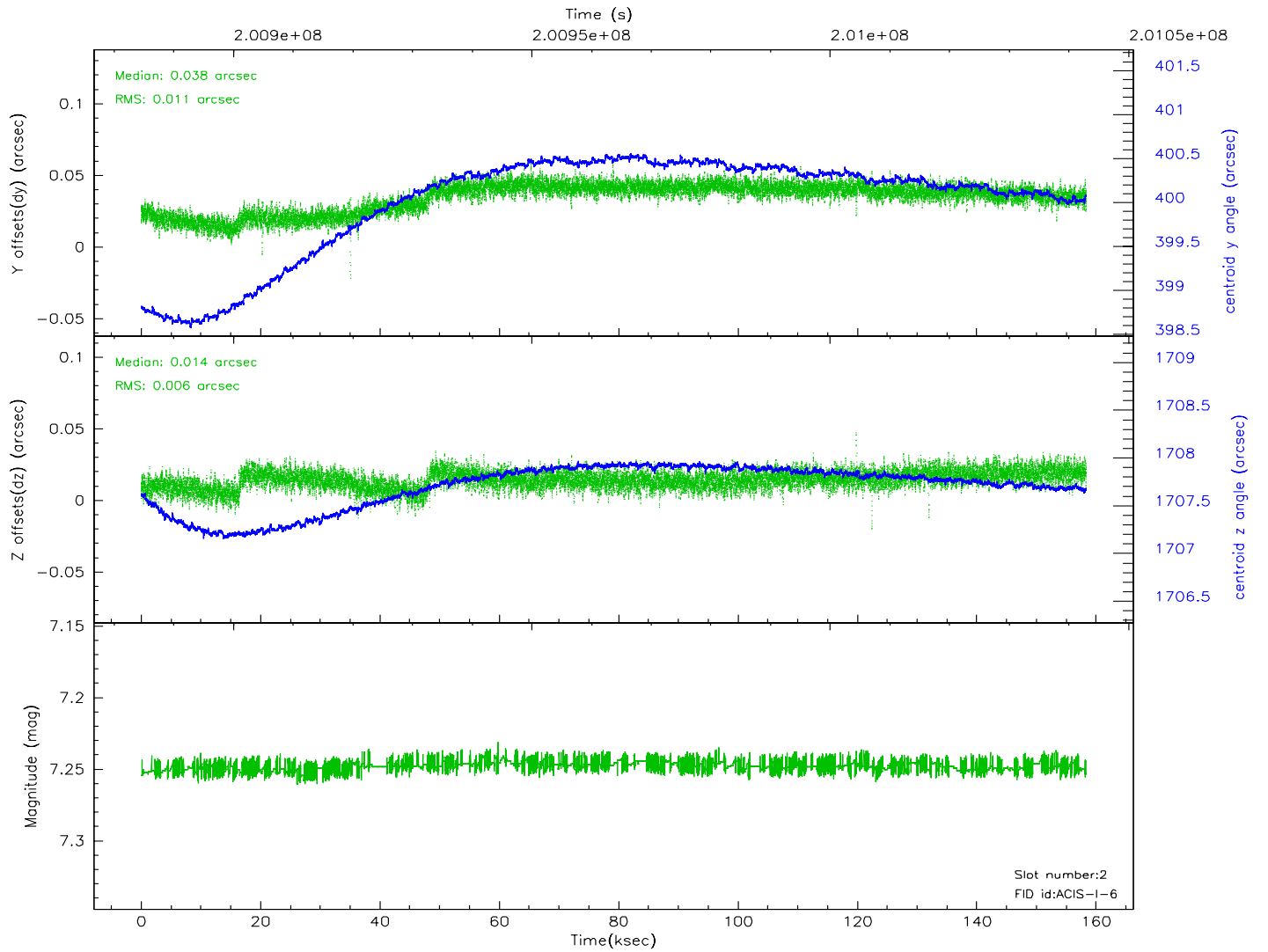
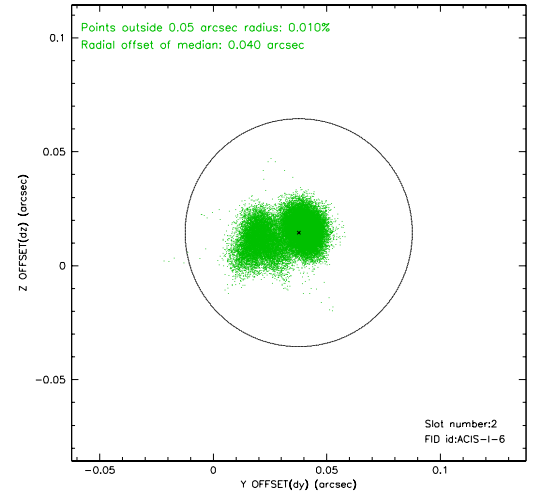
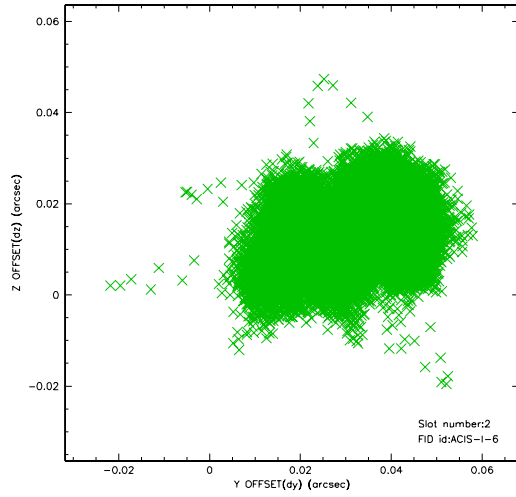
### 2.5.1 Slot 0



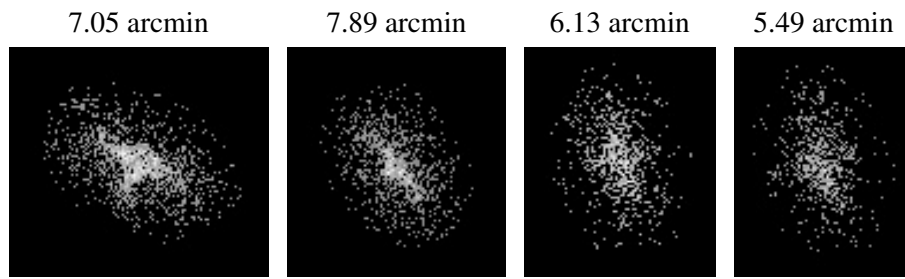
## 2.5.2 Slot 1



### 2.5.3 Slot 2



### 3 Point Sources



## A Summary

### A.1 Status

V&V Scientist	Jen Lauer
V&V Date (YYYY-MM-DD)	2006.05.18
V&V Edition	1
V&V Disposition and Status	OK
V&V Charge Time	157.507

### A.2 Comments

Roll constraint met.