

V&V Reference Report

L2 ASCDS Version : 8.5

Observation 4967 - L2 Version 3
Chandra X-Ray Center

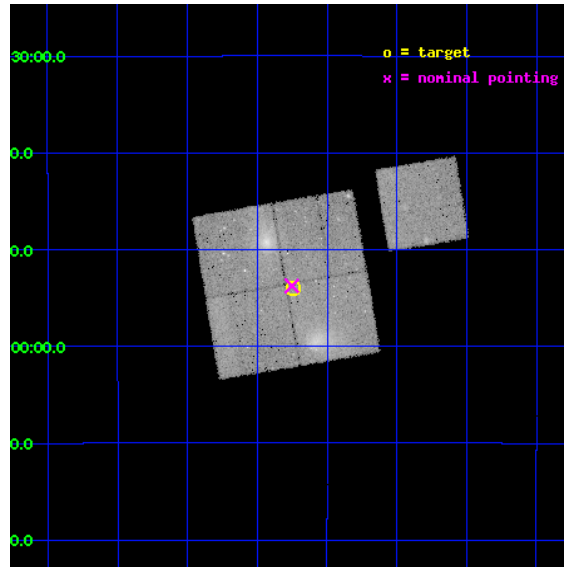
L2 Processing Date : Dec 8 2012

Contents

1	Front	2
2	OBI	3
2.1	OBI	3
2.1.1	Images	3
2.1.2	Bias	3
2.1.3	Parameters	4
2.1.4	Events	4
2.2	Compared Parameters	5
2.3	Aspect	6
2.4	Star Slots	9
2.4.1	Slot 3	9
2.4.2	Slot 4	10
2.4.3	Slot 5	11
2.4.4	Slot 6	12
2.4.5	Slot 7	13
2.5	FID Slots	14
2.5.1	Slot 0	14
2.5.2	Slot 1	15
2.5.3	Slot 2	16
A	Summary	17
A.1	Status	17
A.2	Comments	17

1 Front

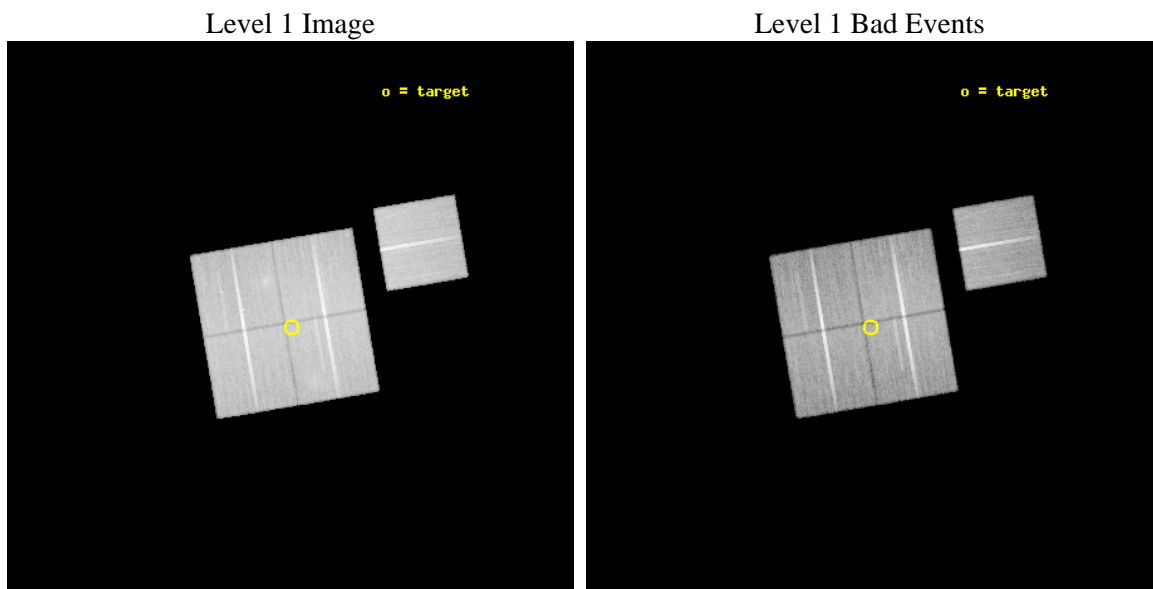
seq_num	800413	Sequence number
obs_id	4967	Observation id
title	Chandra Observations of Two Double Clusters	Proposal title
observer	Dr. David Davis	Principal investigator
object	Abell~222/ Abell~223	Source name
dtcycle	0	
cycle	P	events from which exps? Prim/Second/Both
ra_targ	24.435417	Observer's specified target RA [deg]
dec_targ	-12.899806	Observer's specified target Dec [deg]
ra_nom	24.437984266487	Nominal RA [deg]
dec_nom	-12.89589857194	Nominal Dec [deg]
roll_nom	80.386449215345	Nominal Roll [deg]
revision	3	Processing version of data
ontime	45675.358911991	Sum of GTIs [s]
livetime	45078.576722096	Livetime [s]
ontime0	45669.076951504	Sum of GTIs [s]
ontime1	45675.358901978	Sum of GTIs [s]
ontime2	45675.358931869	Sum of GTIs [s]
ontime3	45675.358911991	Sum of GTIs [s]
ontime6	45675.358931899	Sum of GTIs [s]
l2events	144627	Number of level 2 events



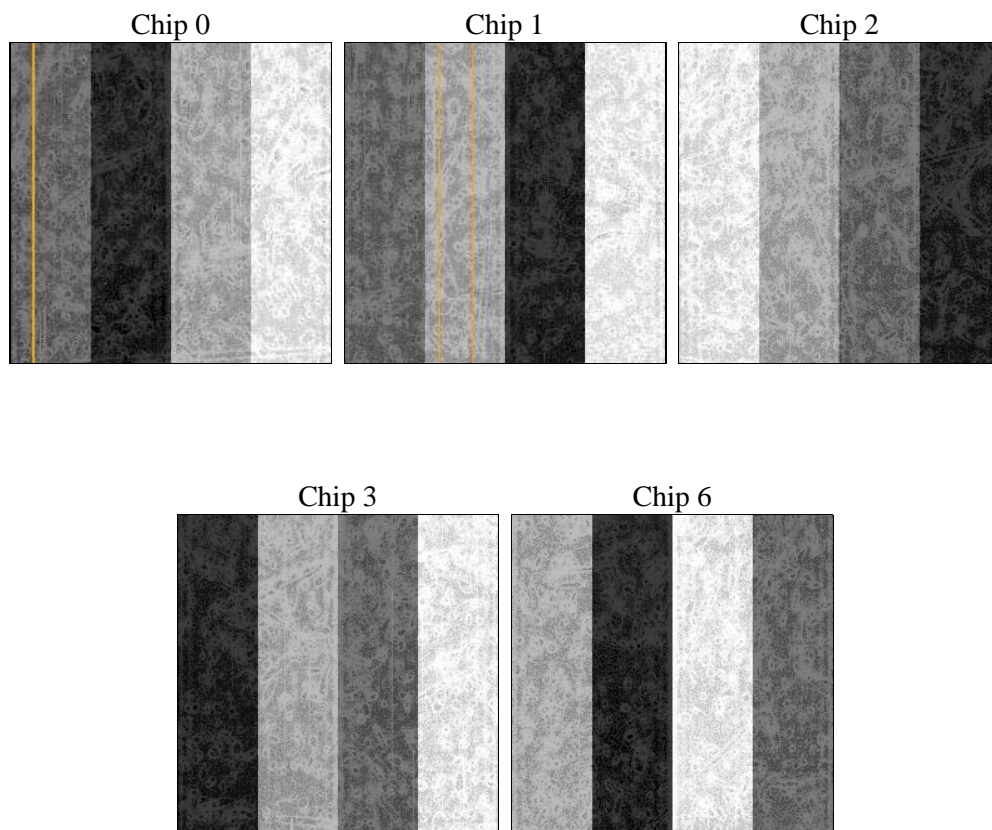
2 OBI

2.1 OBI

2.1.1 Images



2.1.2 Bias



2.1.3 Parameters

obi_num	0	Obi number	sched_exp_time	45500.000000	[s] Scheduled observation exposure time
ascdsver	8.5	Processing system revision	ontime	45675.358911991	Sum of GTIs [s]
caldbver	4.5.4	 	ontime0	45669.076951504	Sum of GTIs [s]
date	2012-12-09T00:15:00	Date and time of file creation	ontime1	45675.358901978	Sum of GTIs [s]
revision	3	Processing version of data	ontime2	45675.358931869	Sum of GTIs [s]
			ontime3	45675.358911991	Sum of GTIs [s]
			ontime6	45675.358931899	Sum of GTIs [s]
			l1events	1536029	Number of level 1 events

2.1.4 Events

	ccd 0	ccd 1	ccd 2	ccd 3	ccd 6		ccd 0	ccd 1	ccd 2	ccd 3	ccd 6
level 1 events	293043	290013	325731	320386	306856	grade 0 events	19493	12460	12186	19659	10410
rejected events	253251	257225	295278	281452	277833		6%	4%	3%	6%	3%
rejected %	86%	88%	90%	87%	90%	grade 1 events	166	136	178	201	129
							0%	0%	0%	0%	0%
						grade 2 events	8017	7318	7195	7327	6421
							2%	2%	2%	2%	2%
						grade 3 events	3850	3755	3360	3643	3470
							1%	1%	1%	1%	1%
						grade 4 events	3569	3785	3380	3567	3396
							1%	1%	1%	1%	1%
						grade 5 events	10554	11521	9965	12097	11616
							3%	3%	3%	3%	3%
						grade 6 events	6095	6783	5500	5879	6441
							2%	2%	1%	1%	2%
						grade 7 events	241299	244255	283967	268013	264973
							82%	84%	87%	83%	86%

2.2 Compared Parameters

Parameter	Planned	Actual
Instrument	ACIS	ACIS
Detector	ACIS-01236	ACIS-01236
Grating	NONE	NONE
Data mode	VFAINT	VFAINT
Observation mode	POINTING	POINTING
[deg] Pointing RA	24.447871	24.43798426648709
[deg] Pointing Dec	-12.921520	-12.89589857194006
[deg] Pointing Roll	80.179977	80.38644921534461
[deg] Roll angle	75.000000	75.000000
[deg] Roll tolerance	10.000000	10.000000
Roll constraint allows 180D rotation	Y	Y
[mm] SIM focus pos	-0.782348	-0.7809083437167272
[mm] SIM defocus	0	0.001439871863259334
[mm] SIM translation stage pos	-233.592463	-233.5874344608287
[mm] SIM translation stage offset	0	-0.005018542100998502
[s] Observation start time (MET)	211194434.184000	211192413.90059
Observation start date	2004-09-10T09:06:10	2004-09-10T08:33:33
[s] Observation end time (MET)	211239934.184000	211241409.92778
Observation end date	2004-09-10T21:44:30	2004-09-10T22:10:09
Read mode	TIMED	TIMED

Parameter	Planned	Actual
Obspar format version number	7	7
Obspar file type	PREDICTED	ACTUAL
Obspar update status	NONE	UPDATED
Number of optional ACIS chips dropped	0	0
On-chip summing requested	N	N
Subarray requested	NONE	NONE
Alternating exposures requested	N	N
[s] Primary exposure time	0.000000	3.1

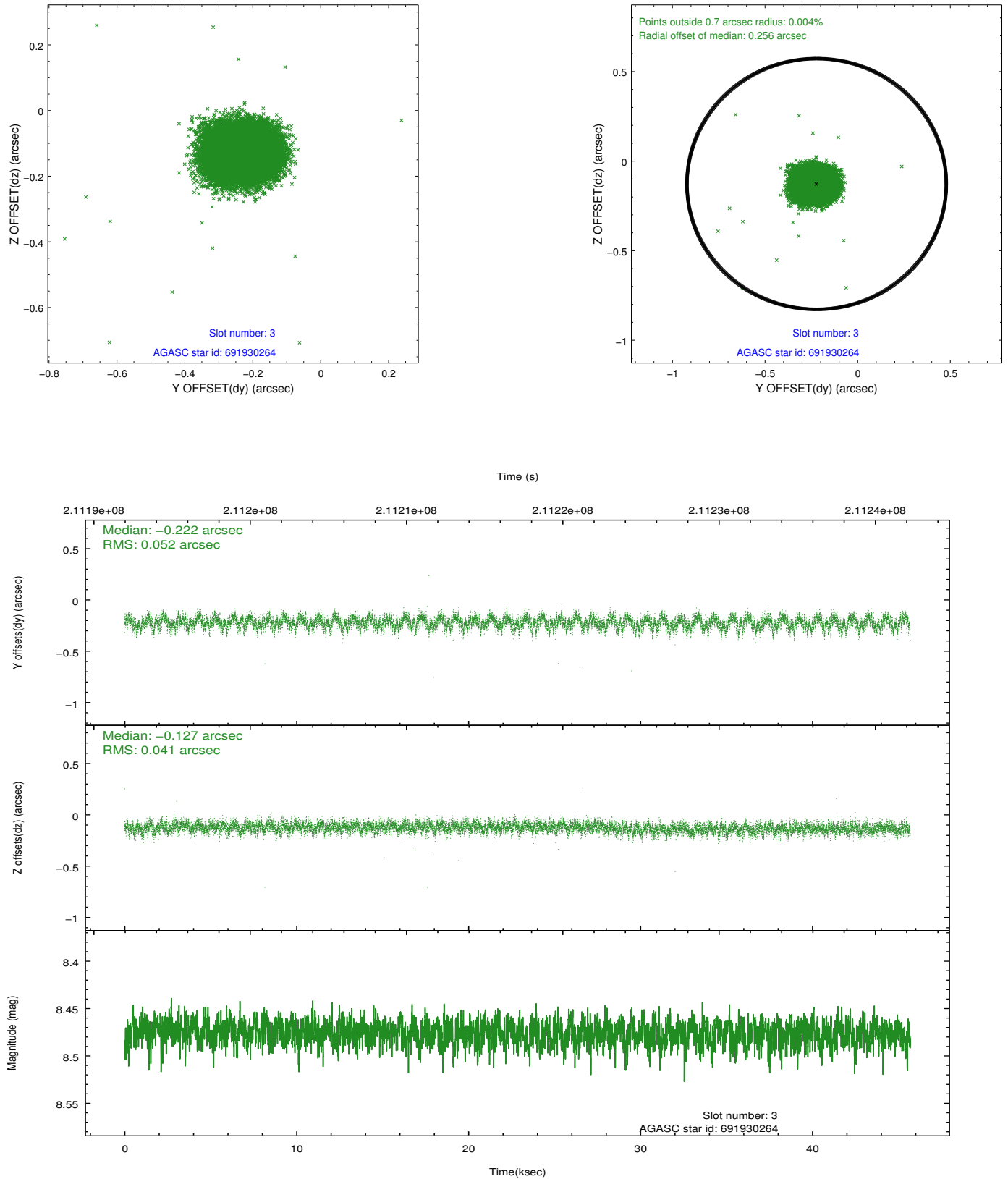
2.3 Aspect

Slot Statistics

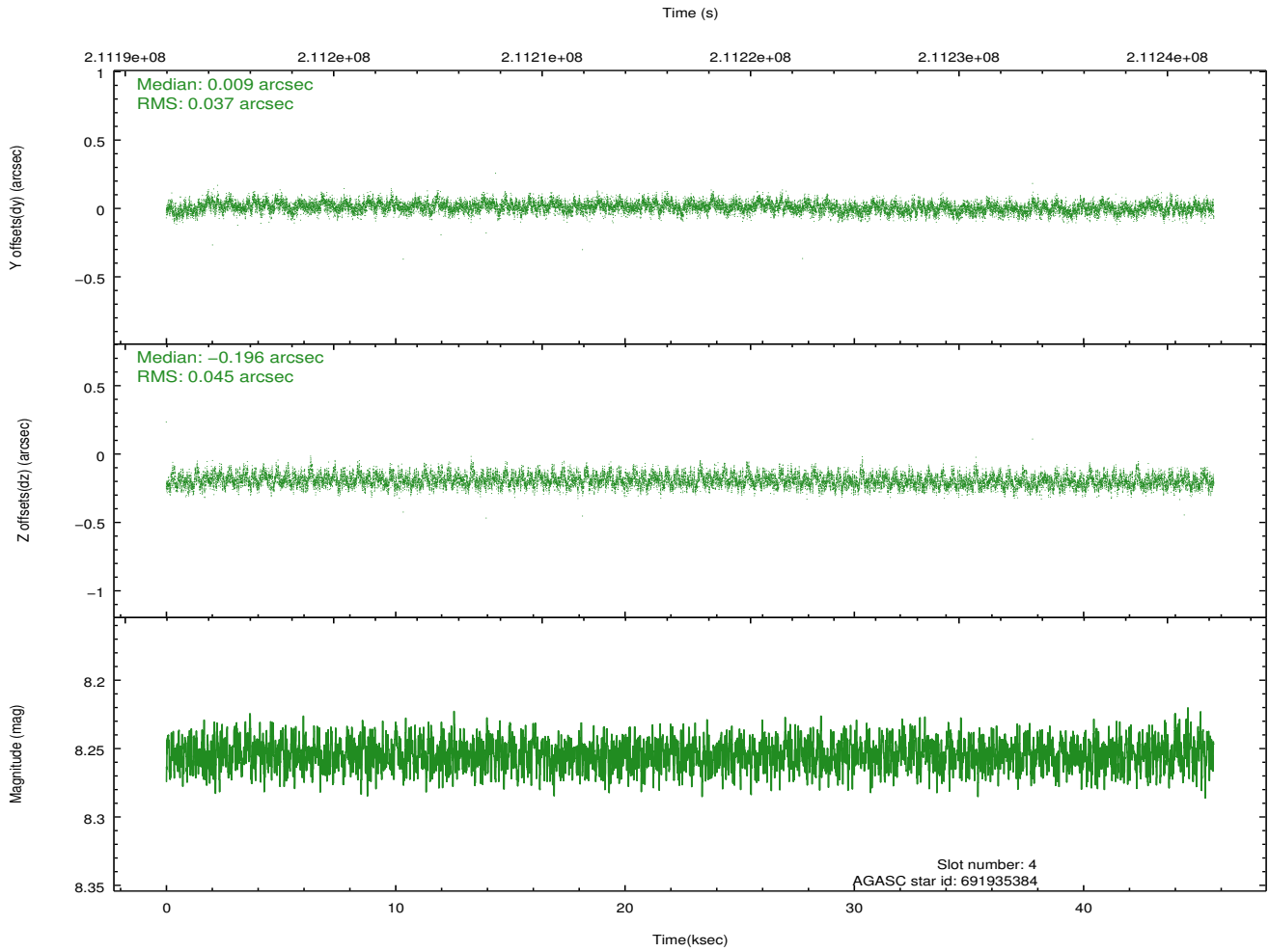
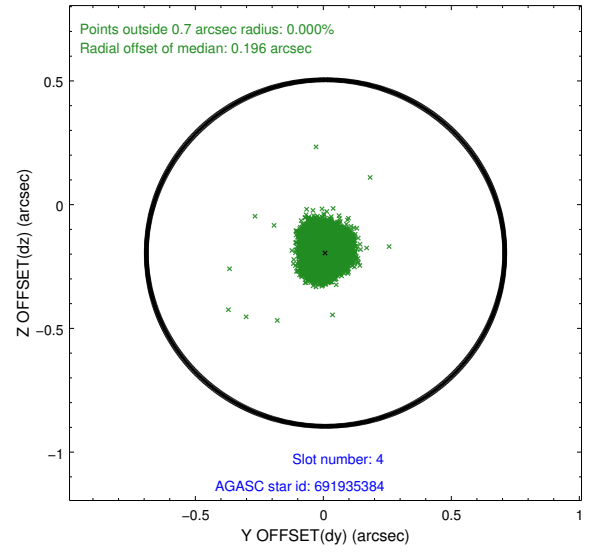
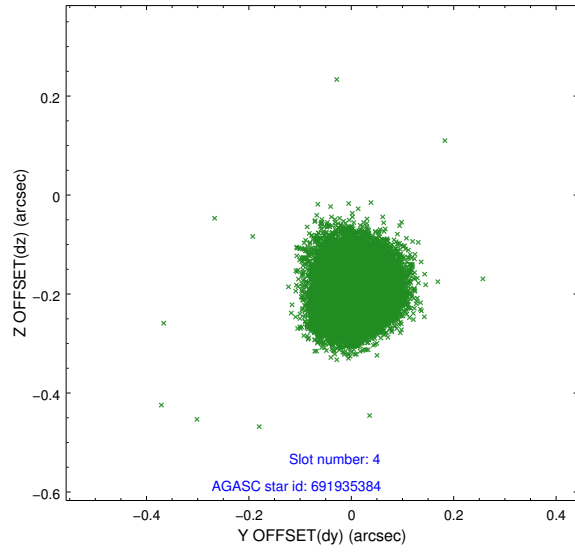
slot	status	id	mag	n_pts	med_dy	med_dz	dr1	dr2	ra	dec	mean_y	mean_z
0	FID	ACIS-I-1	7.24	11142	0.035	0.019	0.015	0.024	0.000000	0.000000	935.03	-831.68
1	FID	ACIS-I-5	7.23	11142	-0.177	0.056	0.012	0.020	0.000000	0.000000	-1813.29	1065.84
2	FID	ACIS-I-6	7.25	11142	0.049	-0.006	0.010	0.016	0.000000	0.000000	400.60	1710.28
3	GUIDE	691930264	8.48	22278	-0.222	-0.127	0.070	0.113	24.097108	-12.733000	457.82	1329.35
4	GUIDE	691935384	8.25	22285	0.009	-0.196	0.062	0.100	24.362037	-12.440919	1653.63	592.47
5	GUIDE	691935432	9.13	22274	-0.008	0.061	0.068	0.113	24.661372	-12.639758	1127.49	-565.70
6	GUIDE	691937960	9.80	22242	0.044	0.186	0.105	0.172	25.047145	-13.440657	-1485.70	-2386.60
7	GUIDE	691942320	9.44	22275	0.178	0.078	0.092	0.148	24.887668	-13.538925	-1928.34	-1896.01

2.4 Star Slots

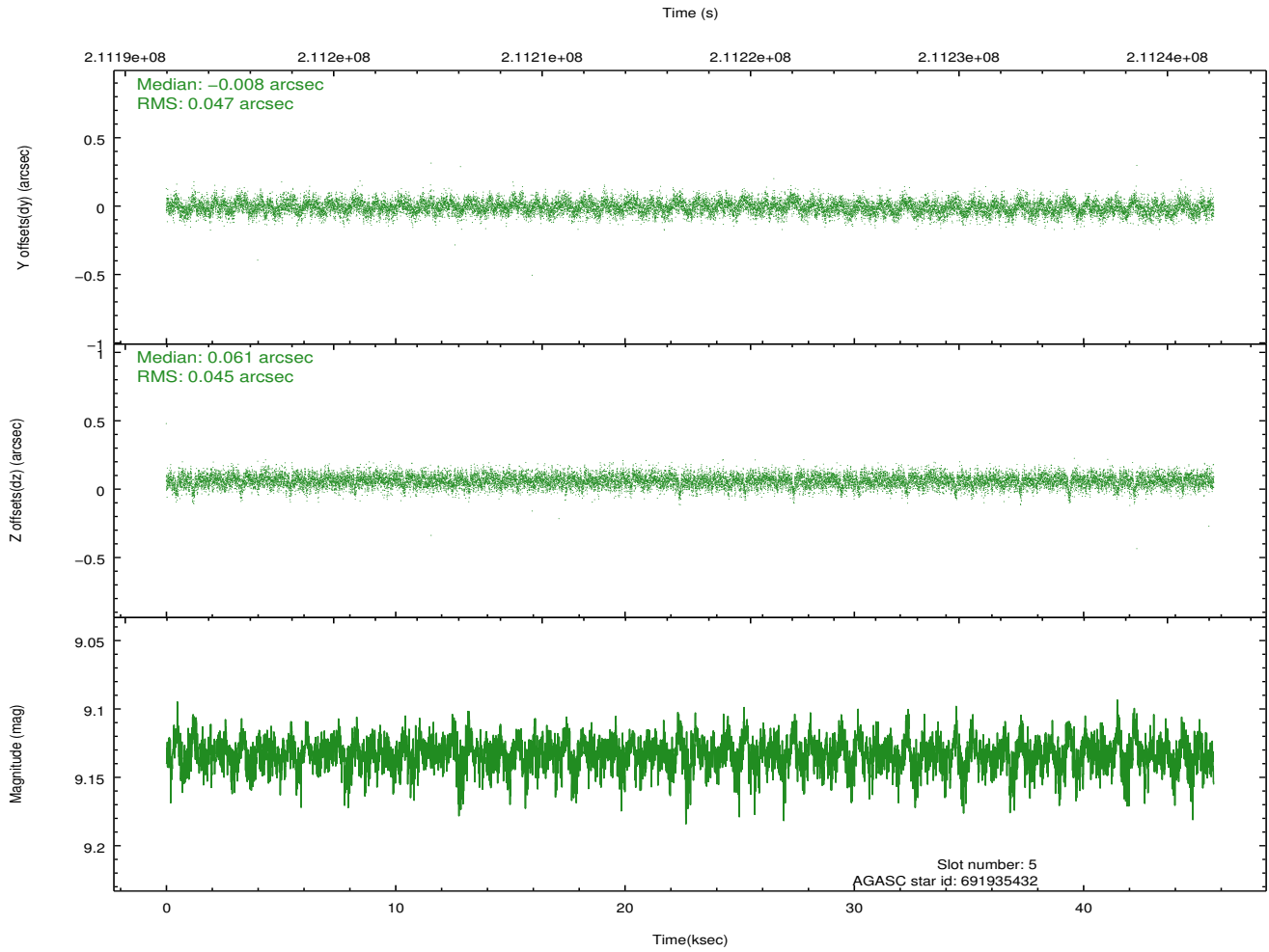
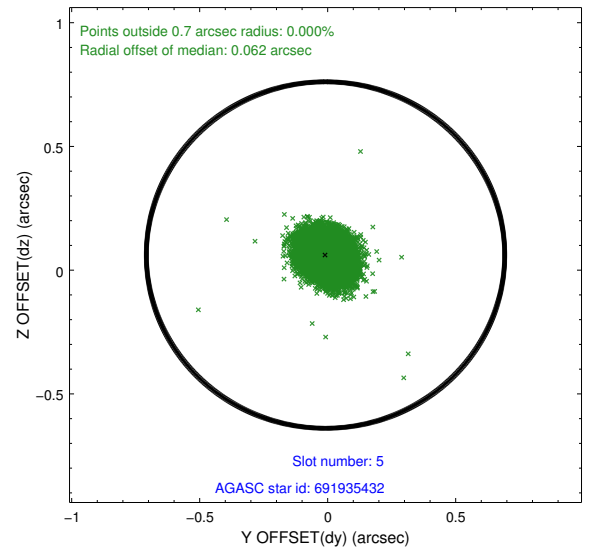
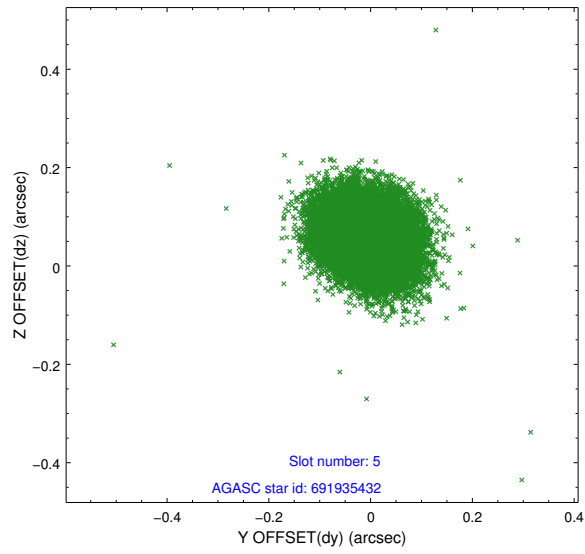
2.4.1 Slot 3



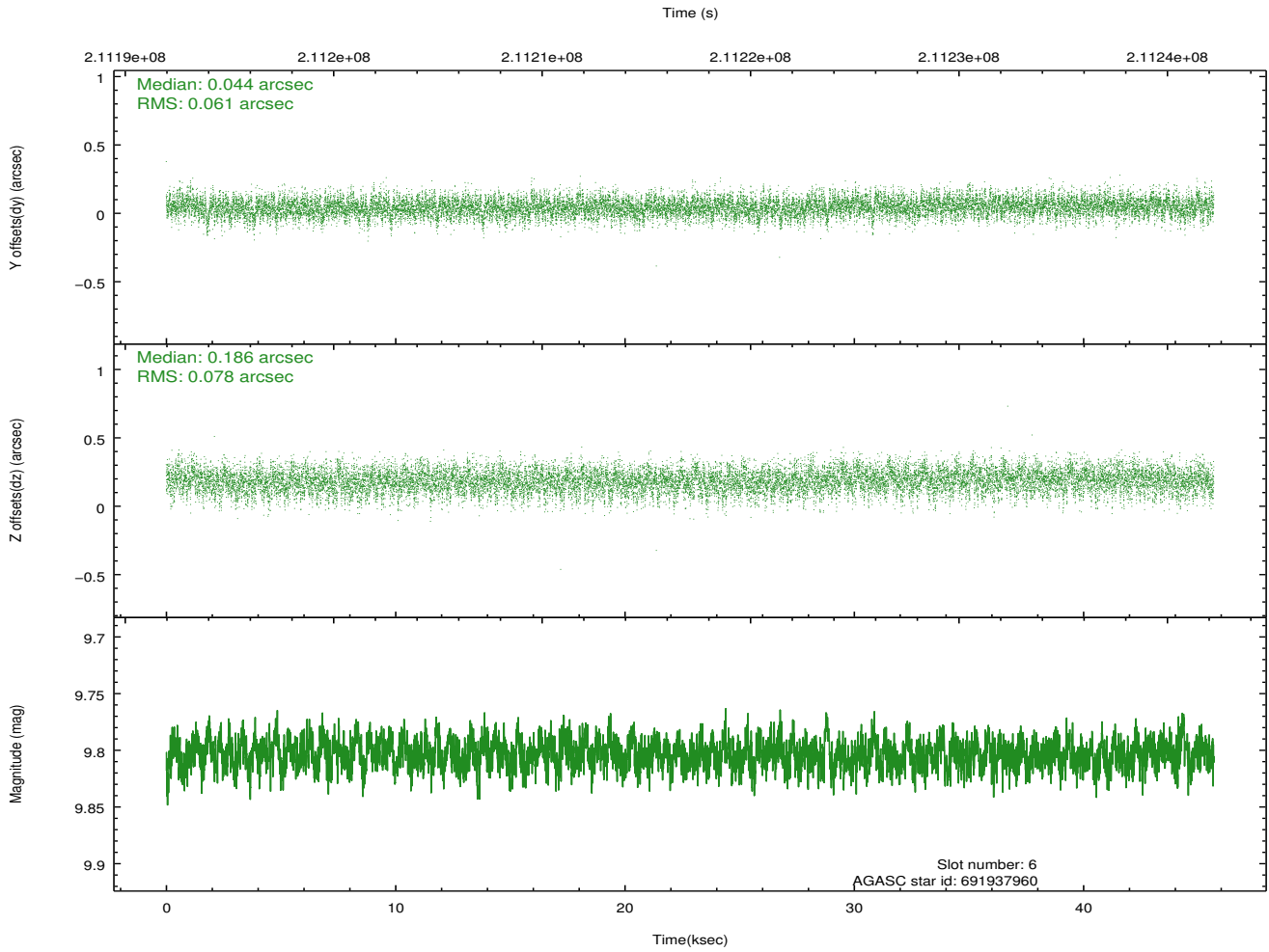
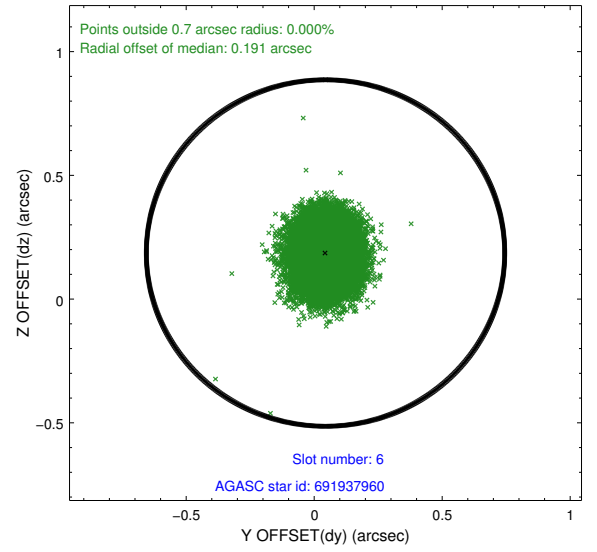
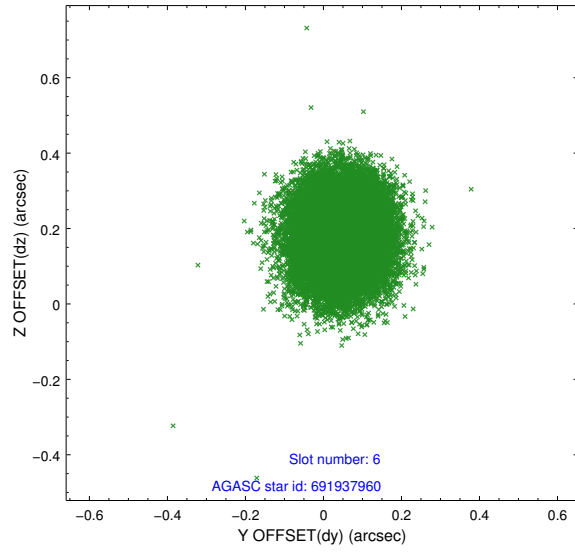
2.4.2 Slot 4



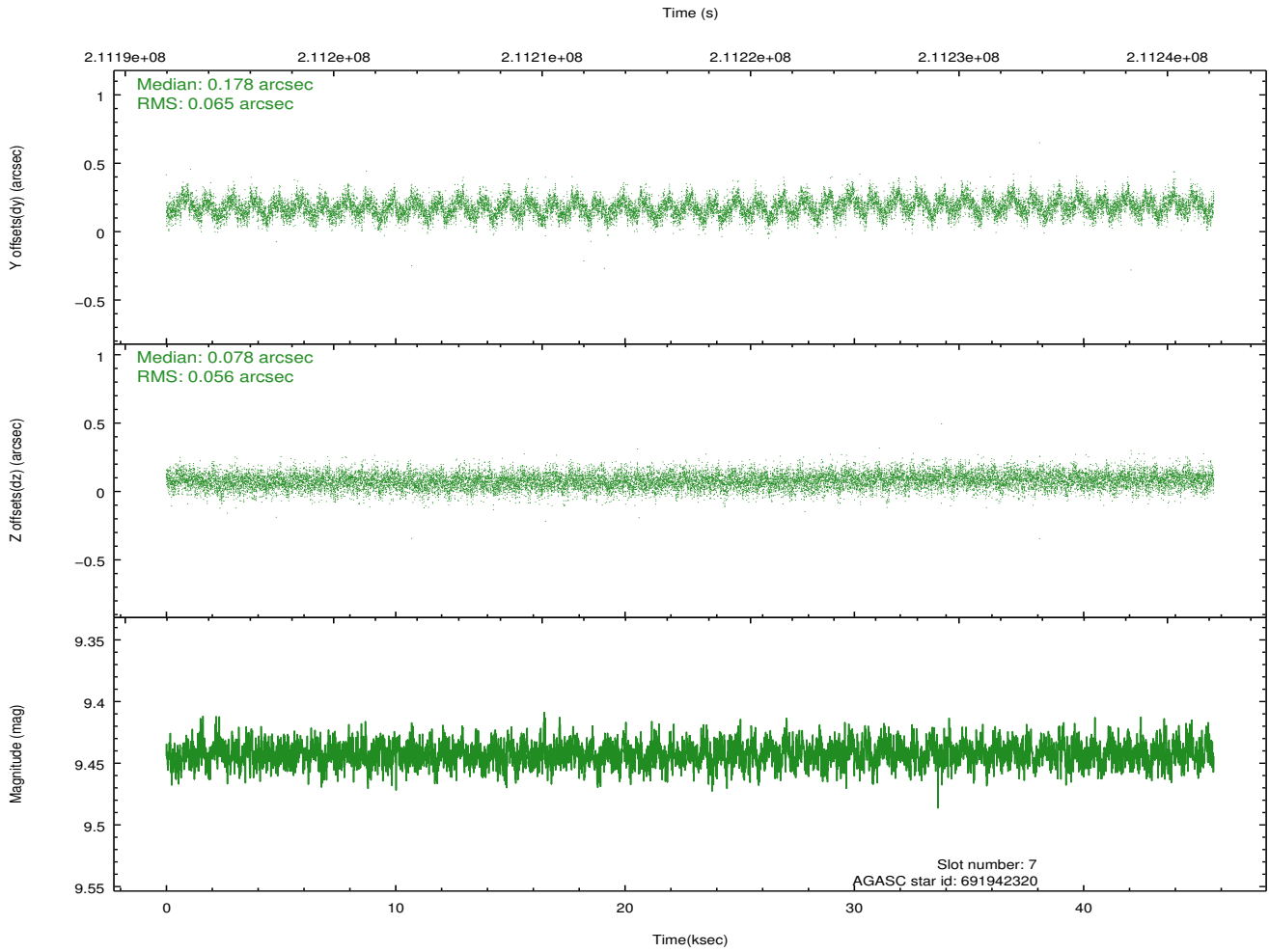
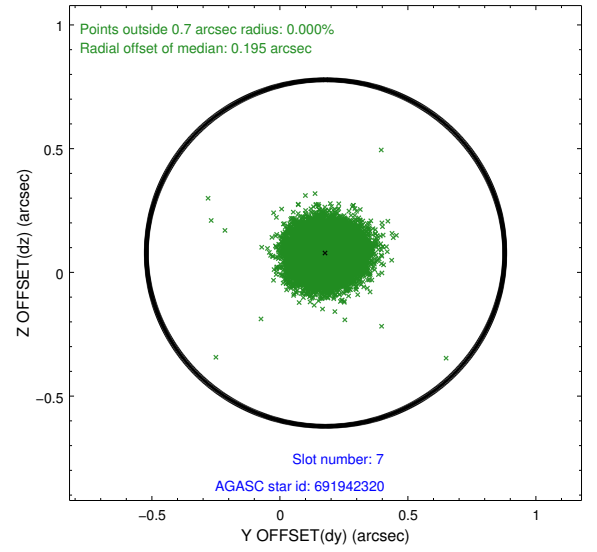
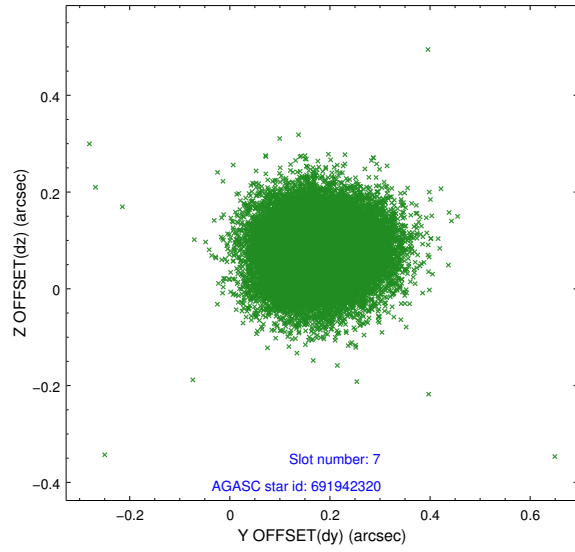
2.4.3 Slot 5



2.4.4 Slot 6

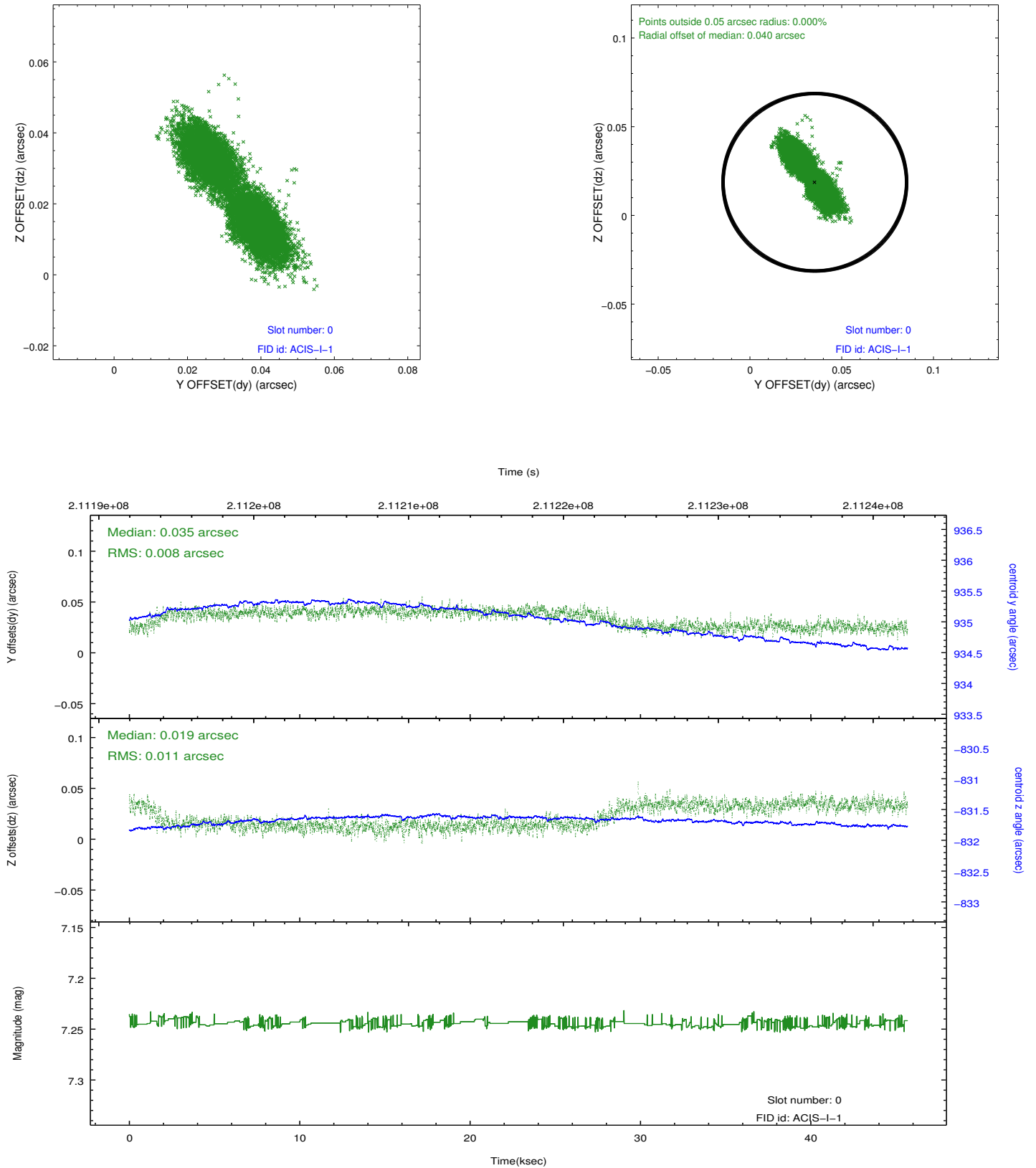


2.4.5 Slot 7

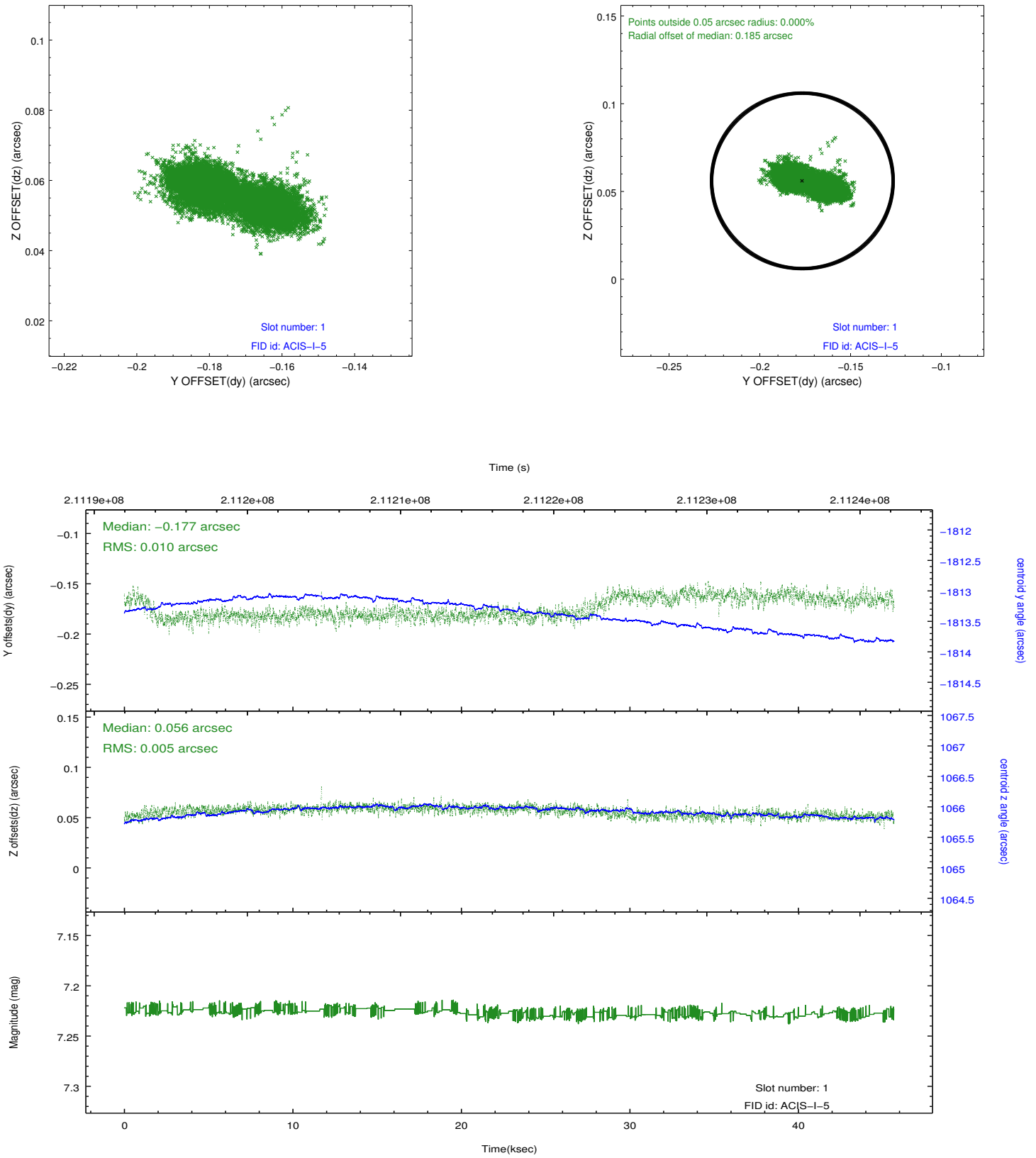


2.5 FID Slots

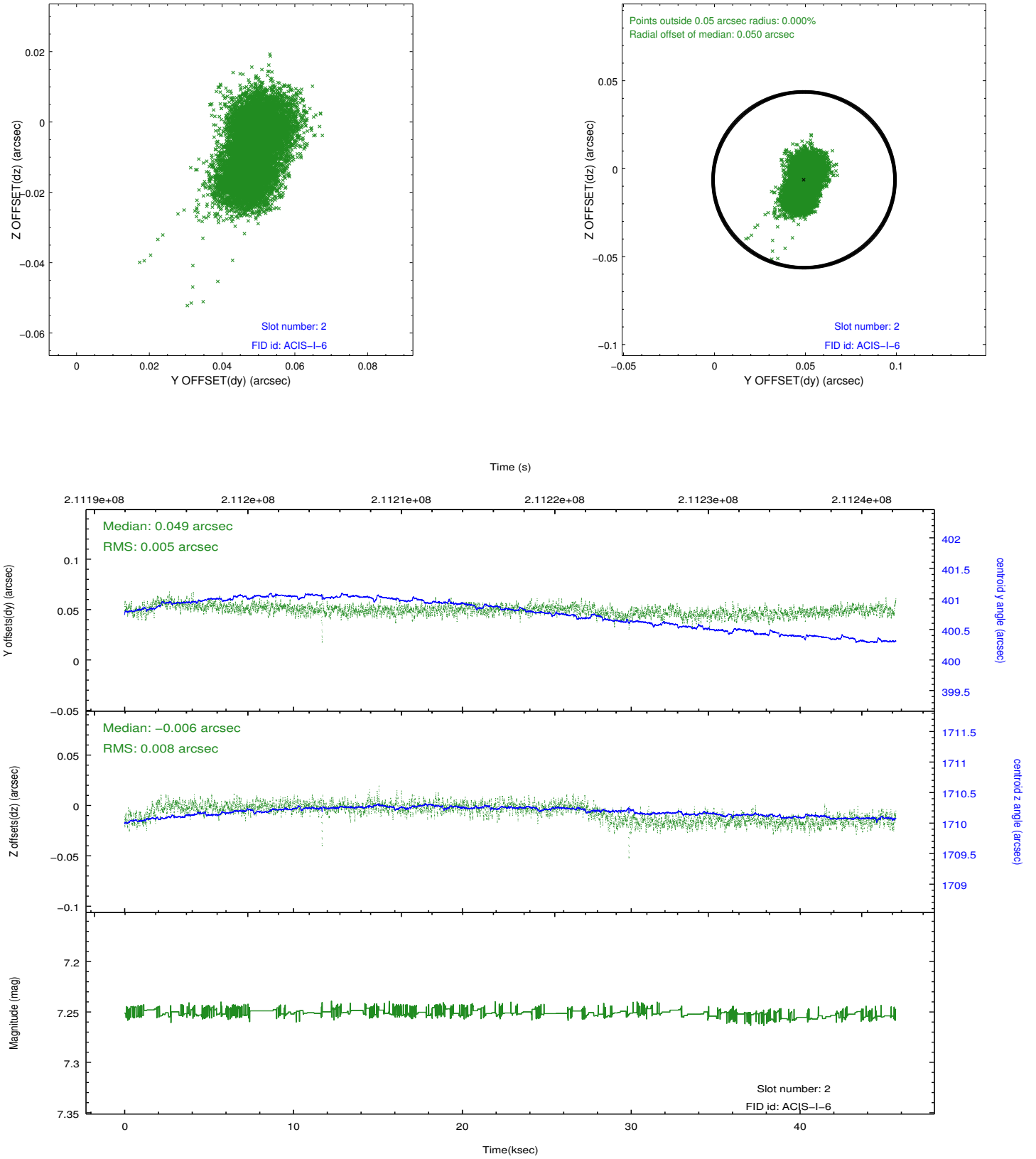
2.5.1 Slot 0



2.5.2 Slot 1



2.5.3 Slot 2



A Summary

A.1 Status

V&V Scientist	Beth Sundheim
V&V Date (YYYY-MM-DD)	2012.12.31
V&V Edition	1
V&V Disposition and Status	OK
V&V Charge Time	45.675

A.2 Comments