

# V&V Reference Report

## L2 ASCDS Version : 7.6.8

Observation 4827 - L2 Version 001  
Chandra X-Ray Center

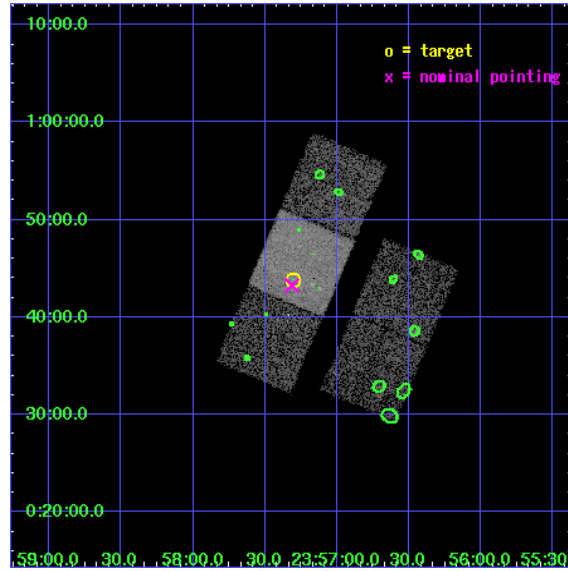
L2 Processing Date : Jun 26 2006

## Contents

<b>1</b>	<b>Front</b>	<b>2</b>
<b>2</b>	<b>OBI</b>	<b>3</b>
2.1	OBI . . . . .	3
2.1.1	Images . . . . .	3
2.1.2	Bias . . . . .	3
2.1.3	Parameters . . . . .	4
2.1.4	Events . . . . .	4
2.2	Compared Parameters . . . . .	5
2.3	Aspect . . . . .	6
2.4	Star Slots . . . . .	9
2.4.1	Slot 3 . . . . .	9
2.4.2	Slot 4 . . . . .	10
2.4.3	Slot 5 . . . . .	11
2.4.4	Slot 6 . . . . .	12
2.4.5	Slot 7 . . . . .	13
2.5	FID Slots . . . . .	14
2.5.1	Slot 0 . . . . .	14
2.5.2	Slot 1 . . . . .	15
2.5.3	Slot 2 . . . . .	16
<b>3</b>	<b>Point Sources</b>	<b>17</b>
<b>A</b>	<b>Summary</b>	<b>18</b>
A.1	Status . . . . .	18
A.2	Comments . . . . .	18

# 1 Front

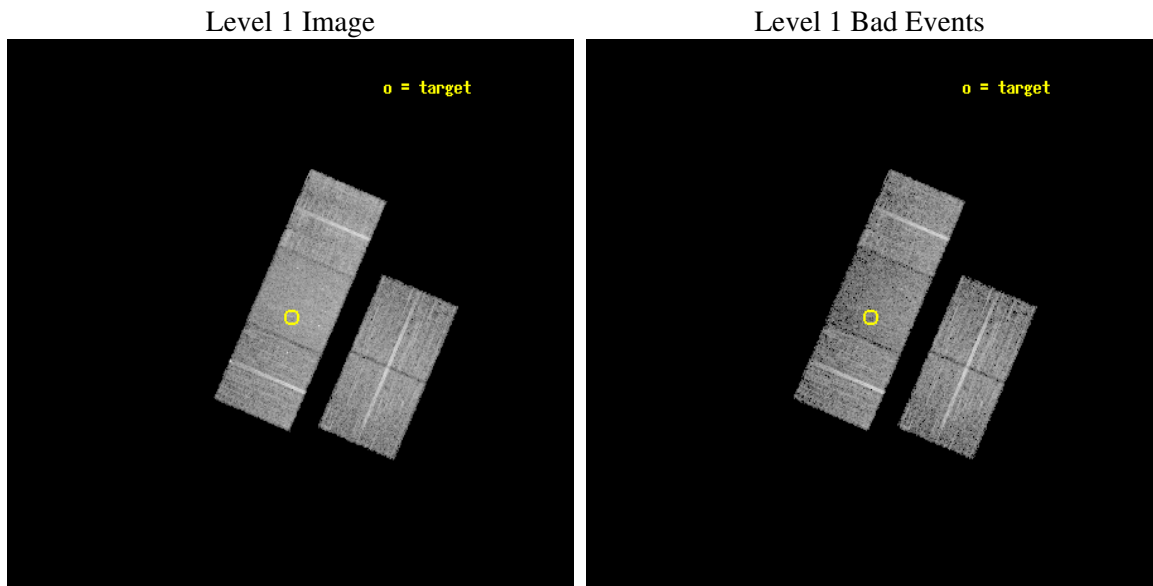
seq_num	700909
obs_id	4827
title	Destroying Degeneracy: Spanning the Luminosity Range for Radio-Quiet Quasars at $z=4$
observer	Dr. Jill Bechtold
object	SDS 2357+0043
dtcycle	0
cycle	P
ra_targ	359.32625
dec_targ	0.730556
ra_nom	359.32844360143
dec_nom	0.72113064904378
roll_nom	293.16519495619
revision	2
ontime	12821.599975348
livetime	12654.076332545
ontime2	12818.458995104
ontime3	12821.599975348
ontime6	12821.599975348
ontime7	12821.599975348
ontime8	12821.599975348
l2events	47538



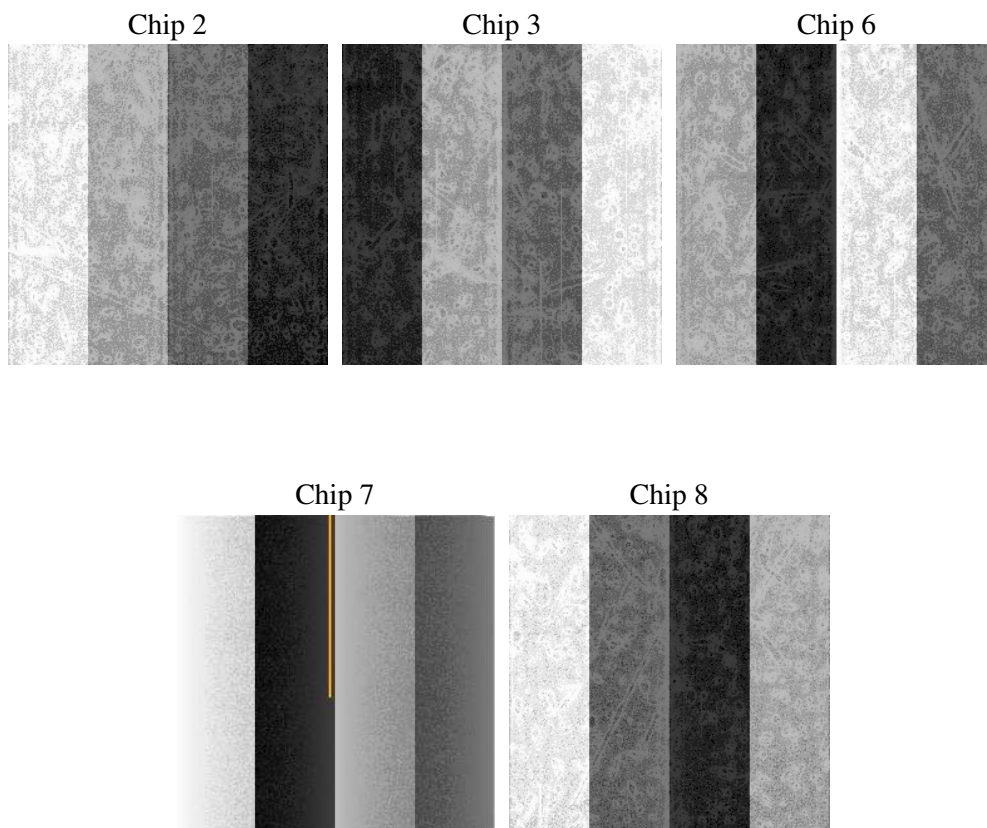
## 2 OBI

### 2.1 OBI

#### 2.1.1 Images



#### 2.1.2 Bias



### 2.1.3 Parameters

obi_num	1
ascdsver	7.6.8
caldbver	3.2.2
date	2006-06-26T22:41:38
revision	2

sched_exp_time	12716.000000
ontime	12827.879526228
ontime2	12824.738545984
ontime3	12827.879526228
ontime6	12827.879526228
ontime7	12827.879526228
ontime8	12827.879526228
llevents	292439

### 2.1.4 Events

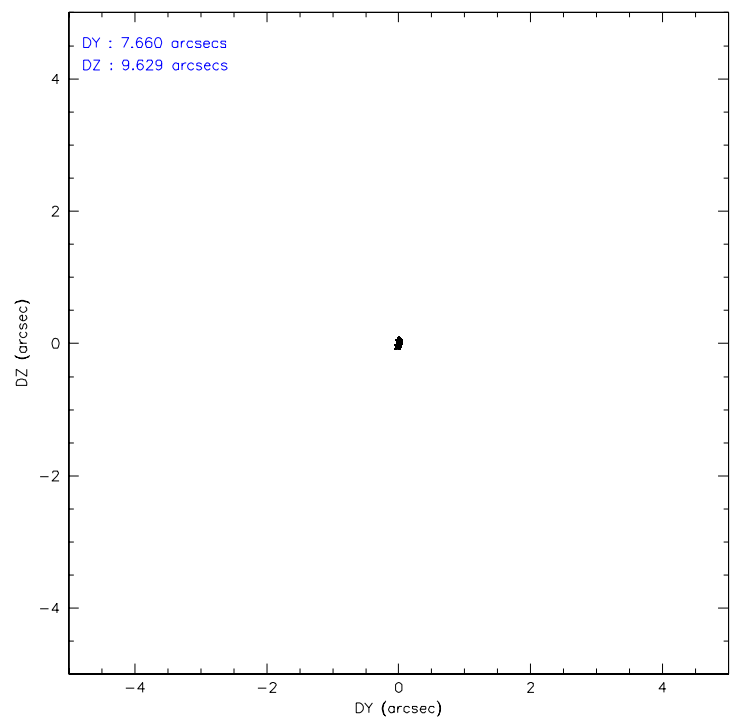
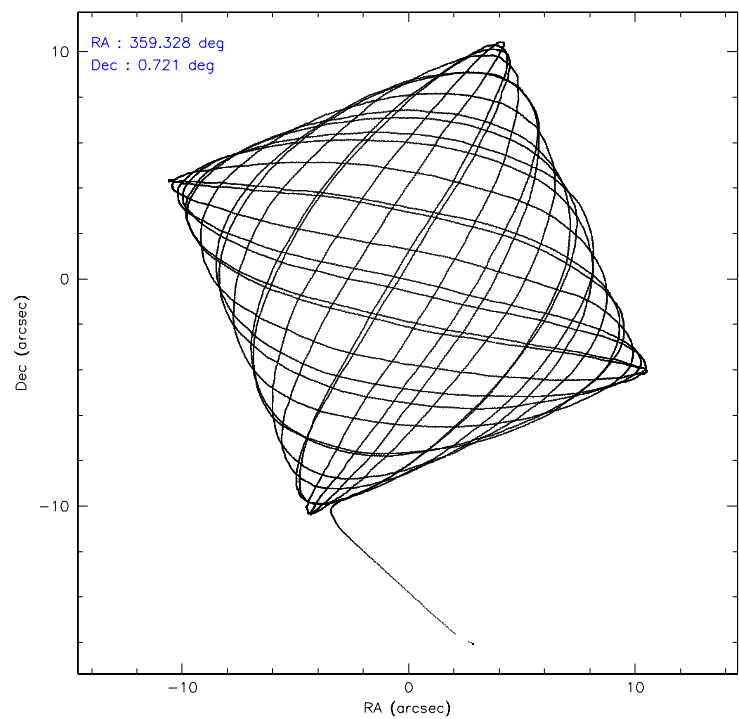
	ccd 2	ccd 3	ccd 6	ccd 7	ccd 8
level 1 events	53115	53662	53438	62284	69940
rejected events	47438	48319	46844	35756	52878
rejected %	89%	90%	87%	57%	75%

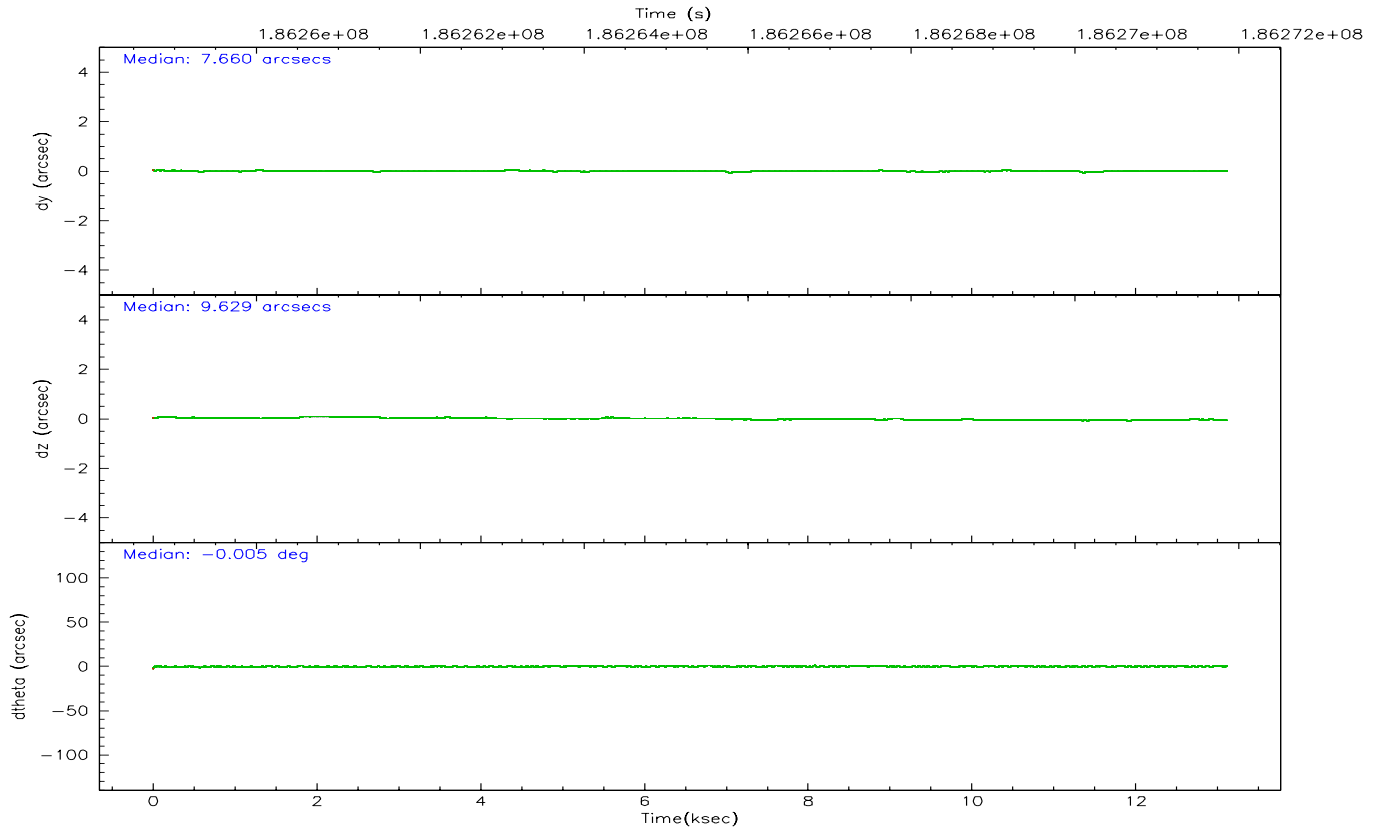
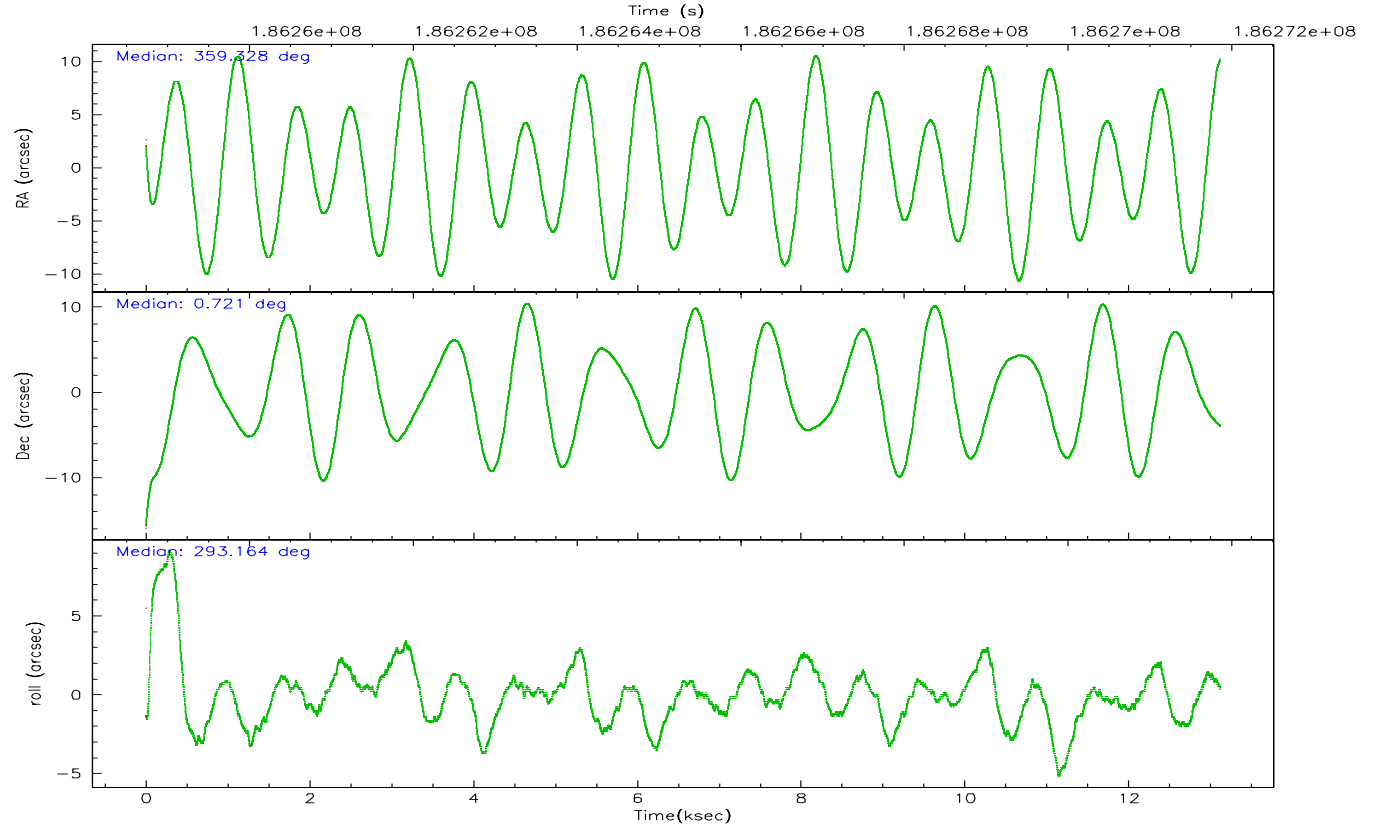
	ccd 2	ccd 3	ccd 6	ccd 7	ccd 8
grade 0 events	2255	1996	2594	1844	5372
	4%	3%	4%	2%	7%
grade 1 events	23	34	23	35	41
	0%	0%	0%	0%	0%
grade 2 events	1188	1083	1359	6588	3513
	2%	2%	2%	10%	5%
grade 3 events	641	684	710	1606	1954
	1%	1%	1%	2%	2%
grade 4 events	605	593	665	1549	1894
	1%	1%	1%	2%	2%
grade 5 events	1756	2170	2274	4704	3107
	3%	4%	4%	7%	4%
grade 6 events	991	987	1269	14952	4376
	1%	1%	2%	24%	6%
grade 7 events	45656	46115	44544	31006	49683
	85%	85%	83%	49%	71%

## 2.2 Compared Parameters

Parameter	Planned	Actual	Parameter	Planned	Actual
Instrument	ACIS	ACIS	Obspar format version number	6	6
Detector	ACIS-23678	ACIS-23678	Obspar file type	PREDICTED	ACTUAL
Grating	NONE	NONE	Obspar update status	NONE	UPDATED
Data mode	VFAINT	VFAINT	On-chip summing requested	N	N
Observation mode	POINTING	POINTING	Subarray requested	NONE	NONE
Pointing RA	359.306420	359.3284436014328	Alternating exposures requested	N	N
Pointing Dec	0.737162	0.7211306490437783	Primary exposure time	0.000000	3.1
Pointing Roll	293.008857	293.1651949561884			
SIM focus pos (mm)	-0.684267	-0.6828225247311905			
SIM defocus (mm)	0	0.001444936568705701			
SIM translation stage pos (mm)	-190.132523	-190.1425803651734			
SIM translation stage offset (mm)	0	0.01005778216563158			
Observation start time	186259138.184000	186258068.56577			
Observation start date	2003-11-26T18:37:54	2003-11-26T18:21:08			
Observation end time	186271854.184000	186272530.2914			
Observation end date	2003-11-26T22:09:50	2003-11-26T22:22:10			
Read mode	TIMED	TIMED			

## 2.3 Aspect





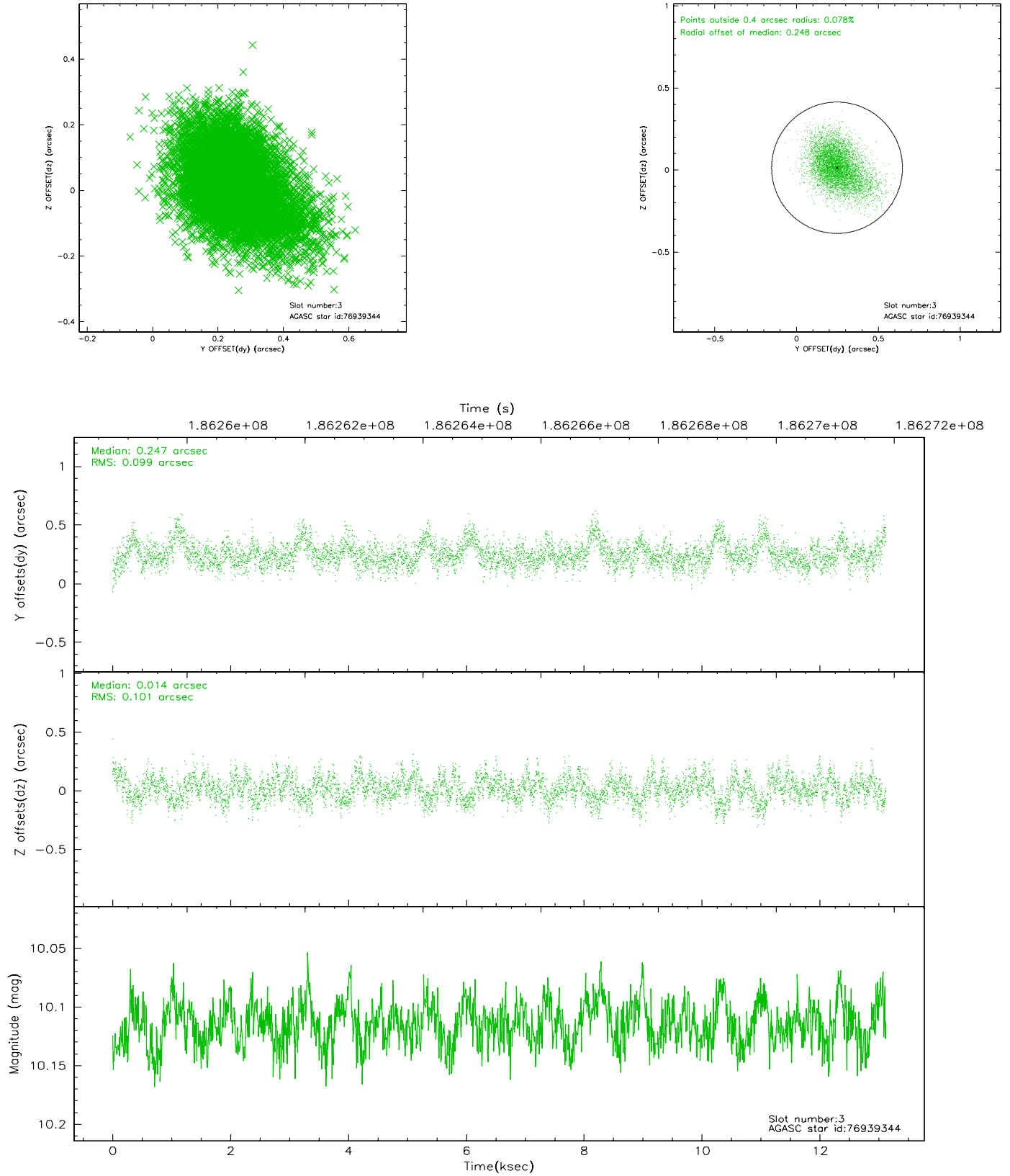
### Slot Statistics

slot	status	id	mag	n_pts	med_dy	med_dz	dr1	dr2	ra	dec	mean_y	mean_z
0	FID	ACIS-S-2	7.10	3201	-0.029	-0.001	0.005	0.009	0.000000	0.000000	-760.43	-1730.83
1	FID	ACIS-S-4	7.20	3201	0.033	0.017	0.006	0.010	0.000000	0.000000	2152.71	177.34
2	FID	ACIS-S-6	7.35	3201	-0.031	-0.009	0.007	0.011	0.000000	0.000000	401.98	815.10
3	GUIDE	76939344	10.11	6398	0.247	0.014	0.148	0.250	359.239870	0.159162	1822.52	-1033.60
4	GUIDE	76939888	9.79	6401	-0.105	0.097	0.103	0.170	358.971554	1.120175	-1739.72	-570.37
5	GUIDE	76943592	8.42	6399	-0.202	-0.019	0.061	0.098	359.136777	1.251082	-1941.67	161.44
6	GUIDE	76943648	10.02	6399	0.172	0.025	0.105	0.170	359.582888	0.324799	1755.68	336.15
7	GUIDE	76949368	8.97	6400	-0.115	-0.114	0.091	0.147	358.665972	0.772790	-1018.71	-2071.52

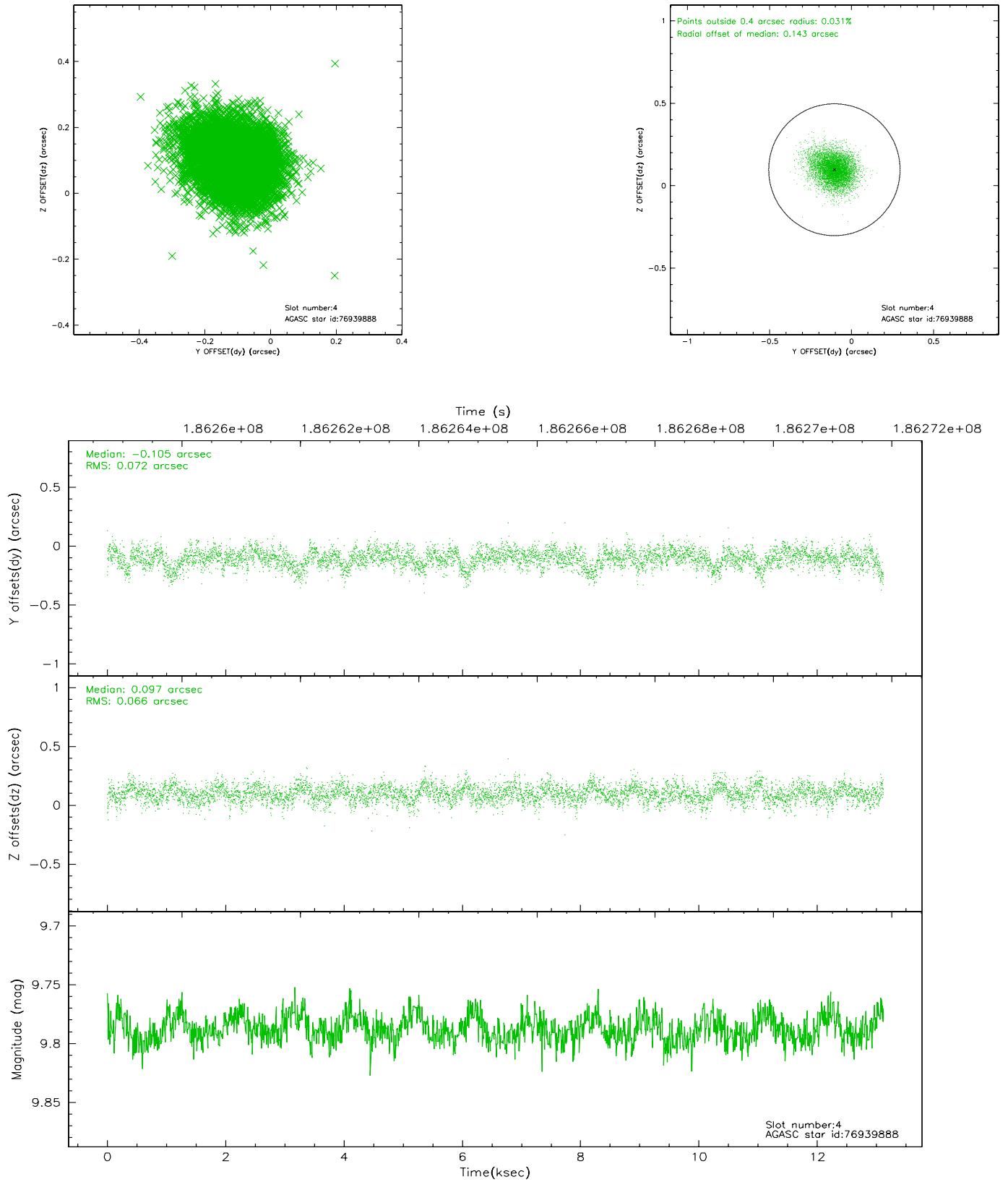


## 2.4 Star Slots

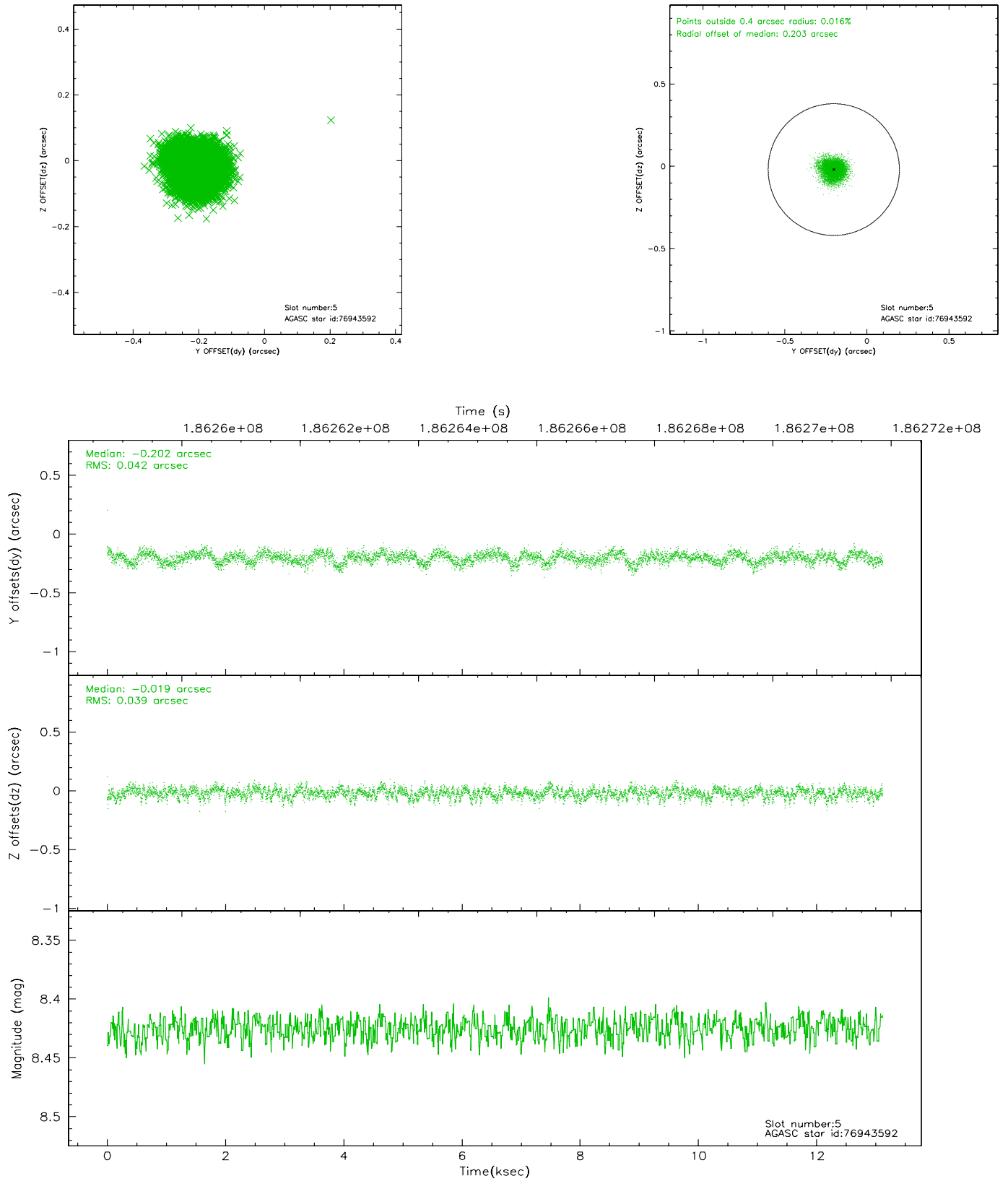
### 2.4.1 Slot 3



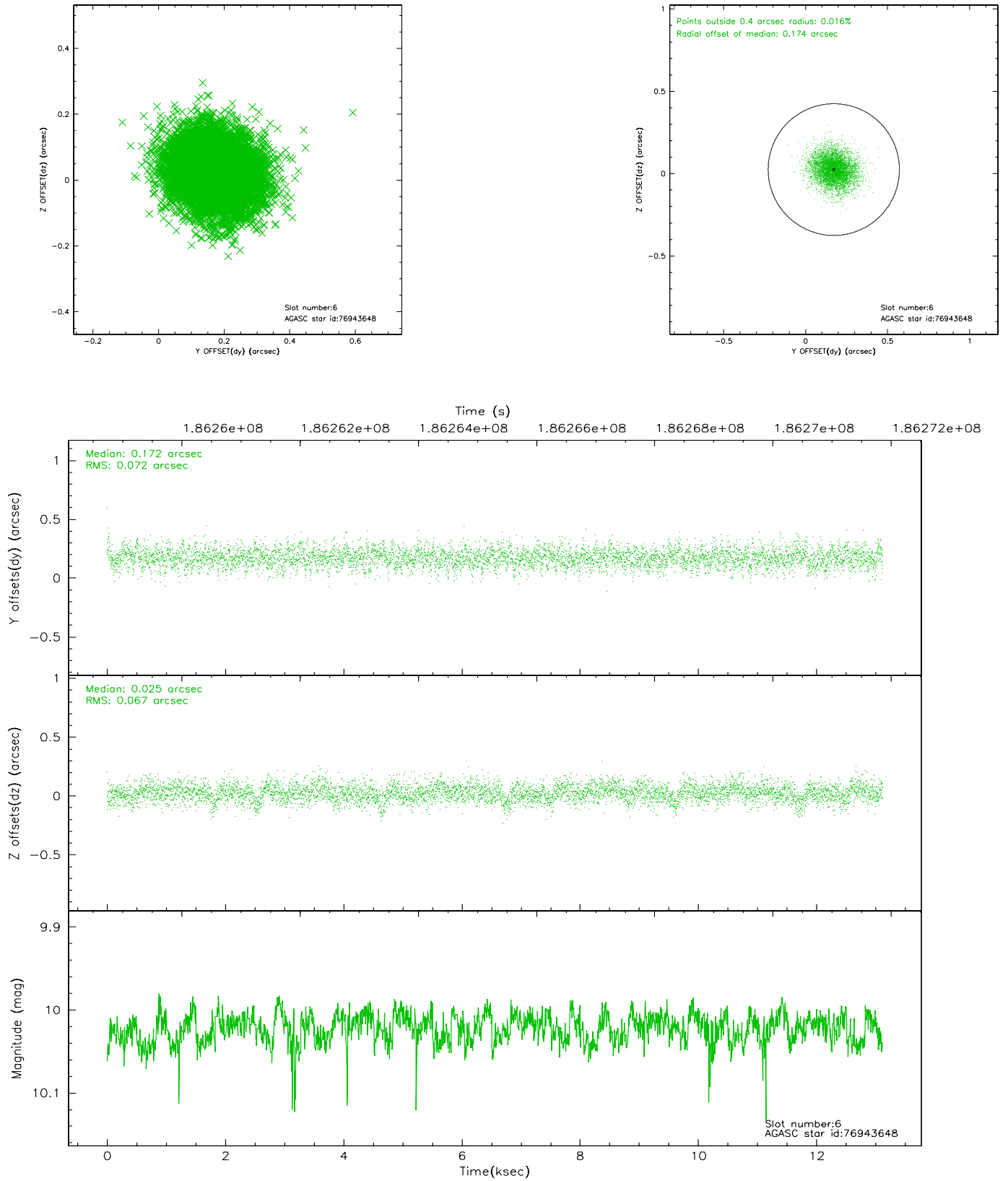
## 2.4.2 Slot 4



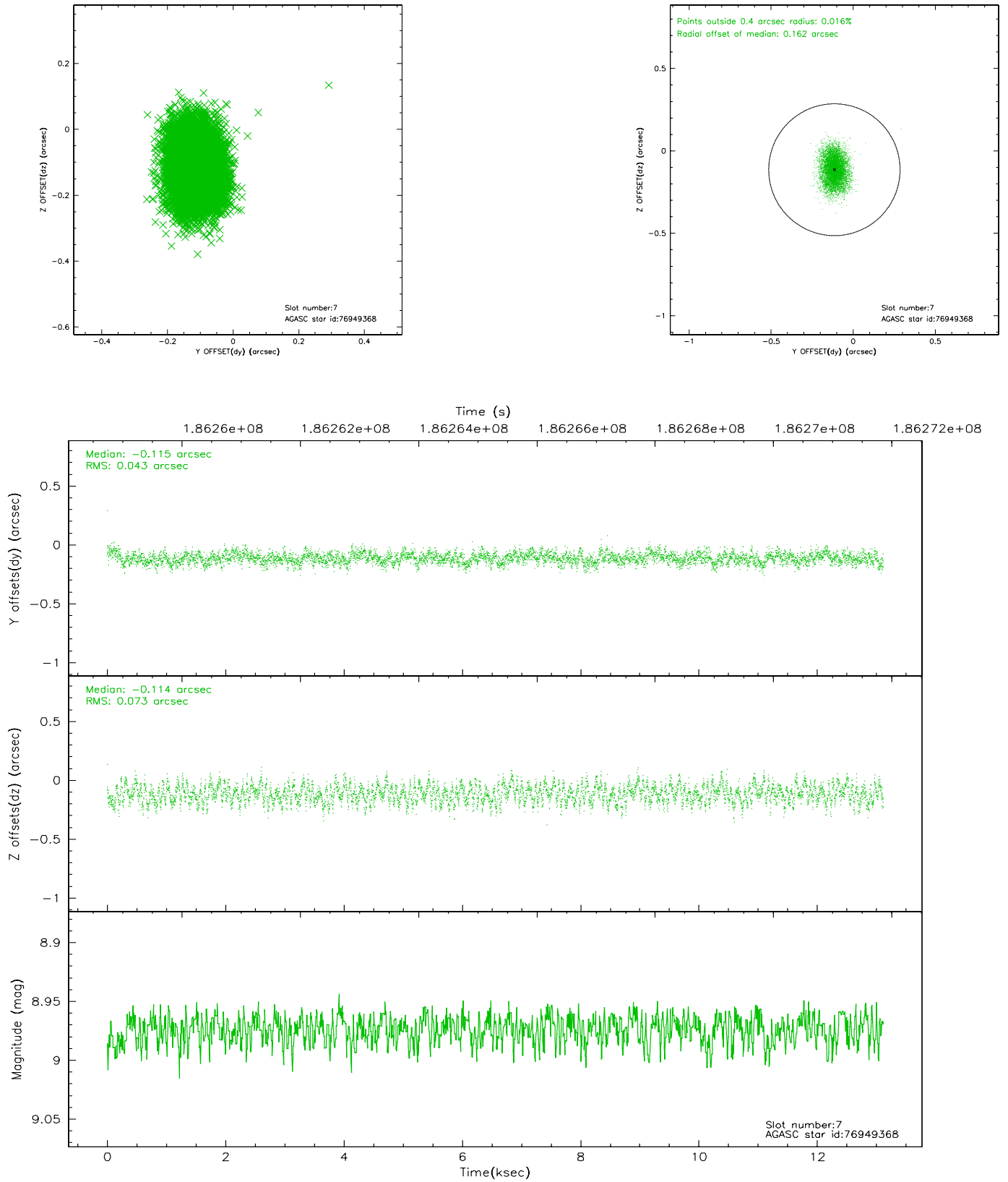
### 2.4.3 Slot 5



## 2.4.4 Slot 6

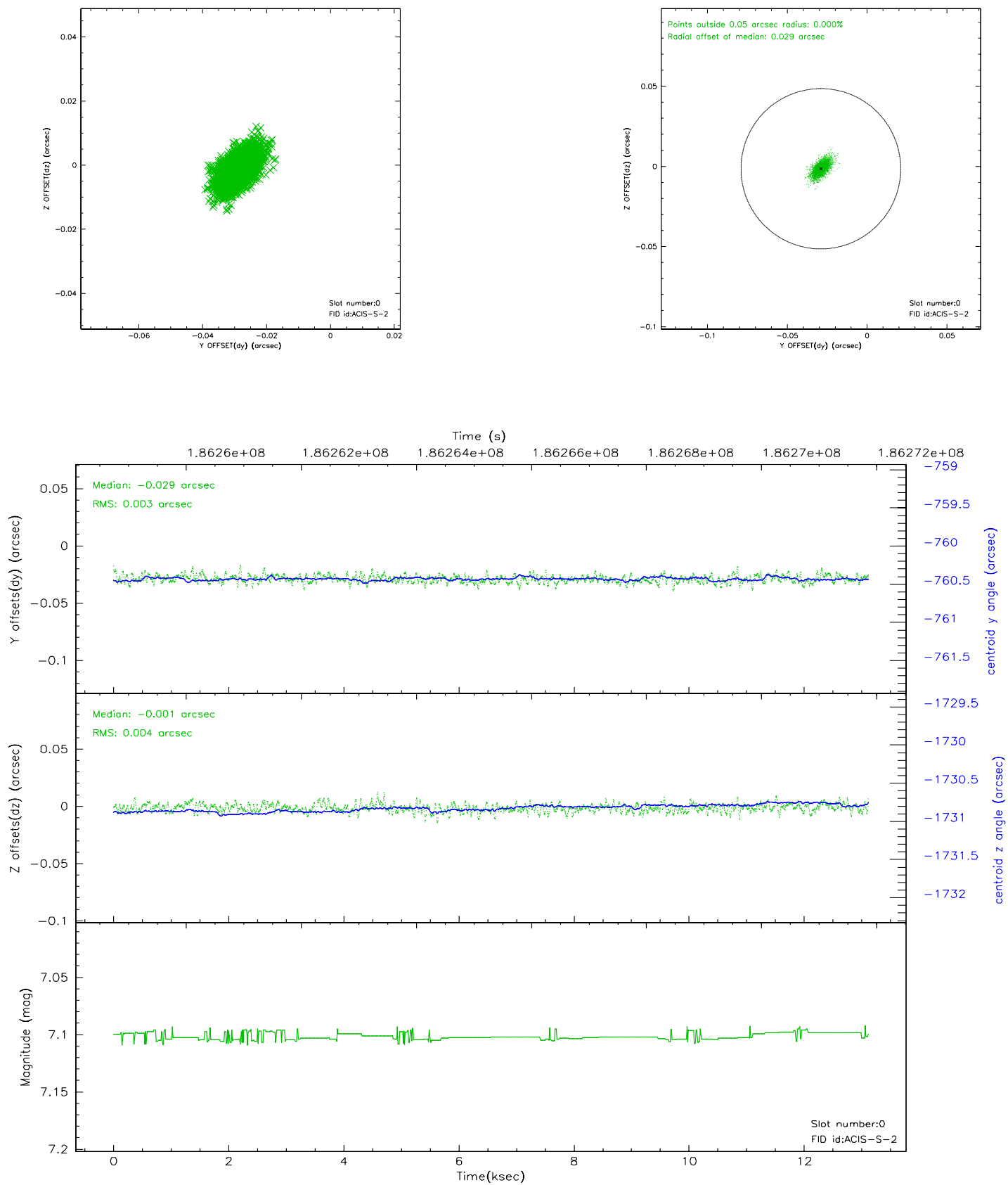


## 2.4.5 Slot 7

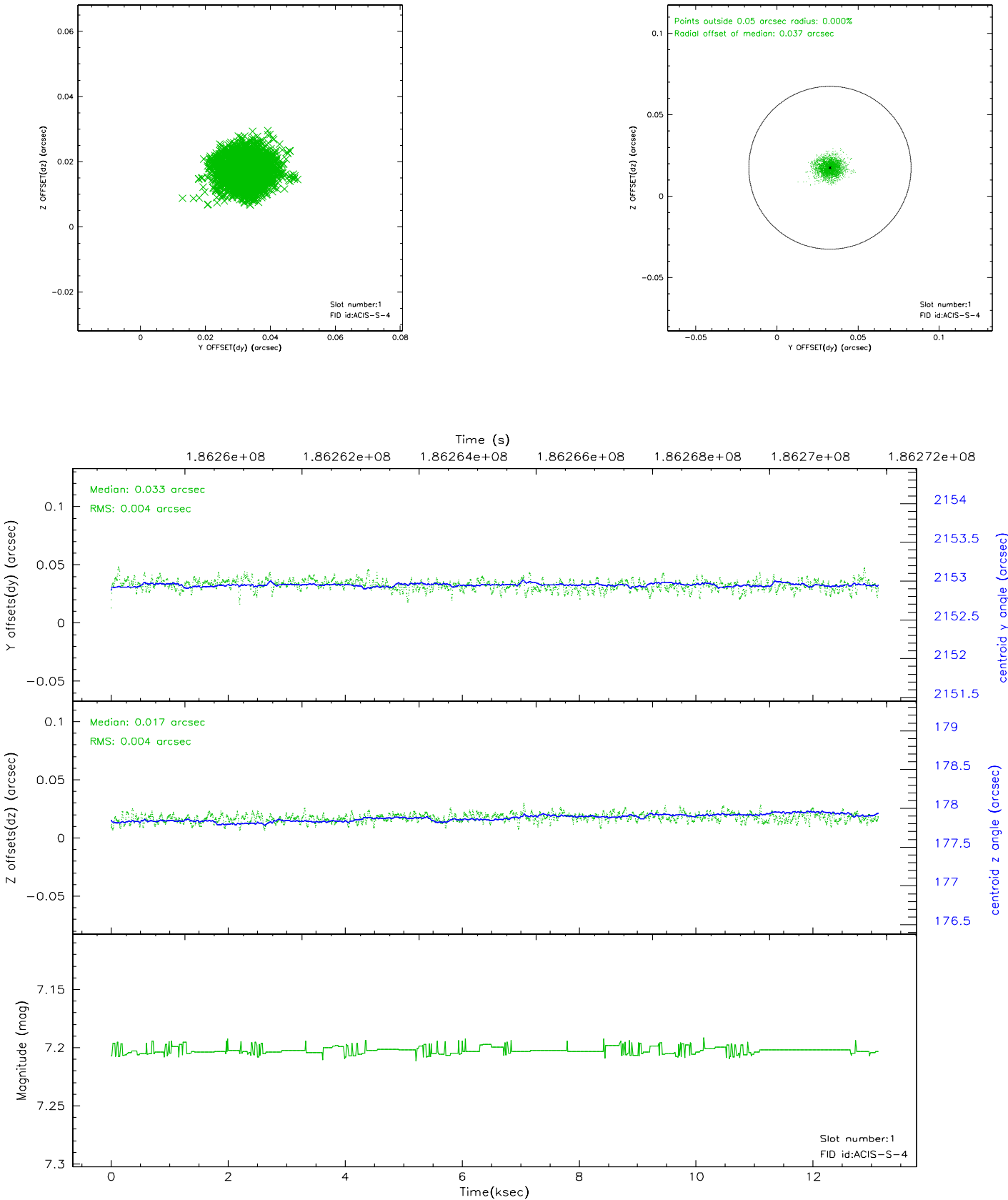


## 2.5 FID Slots

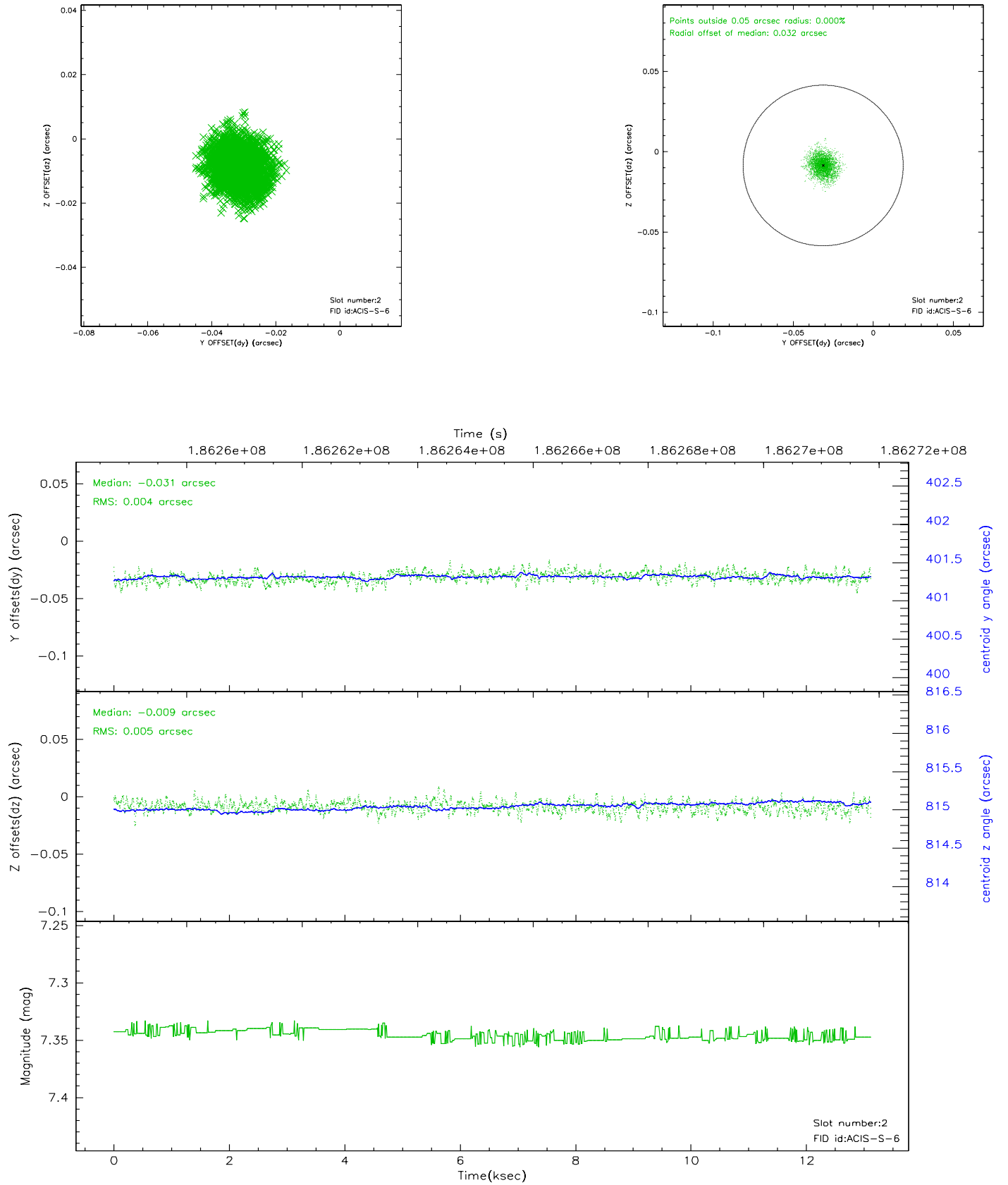
### 2.5.1 Slot 0



2.5.2 Slot 1

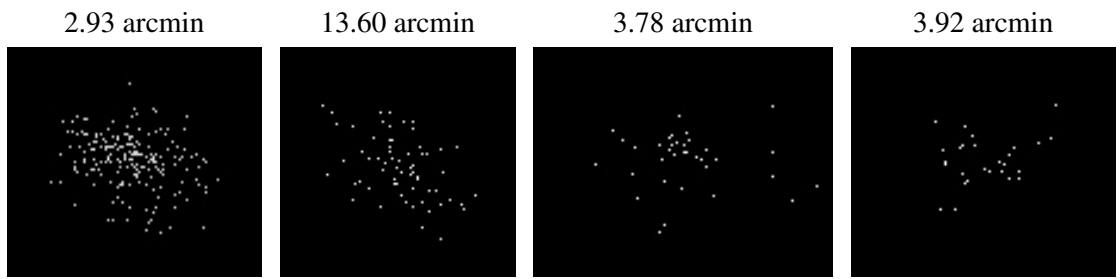


### 2.5.3 Slot 2





### 3 Point Sources



## A Summary

### A.1 Status

V&V Scientist	Jen Lauer
V&V Date (YYYY-MM-DD)	2006.06.27
V&V Edition	1
V&V Disposition and Status	OK
V&V Charge Time	12.824

### A.2 Comments