

V&V Reference Report

L2 ASCDS Version : 7.6.7.1

Observation 4717 - L2 Version 002
Chandra X-Ray Center

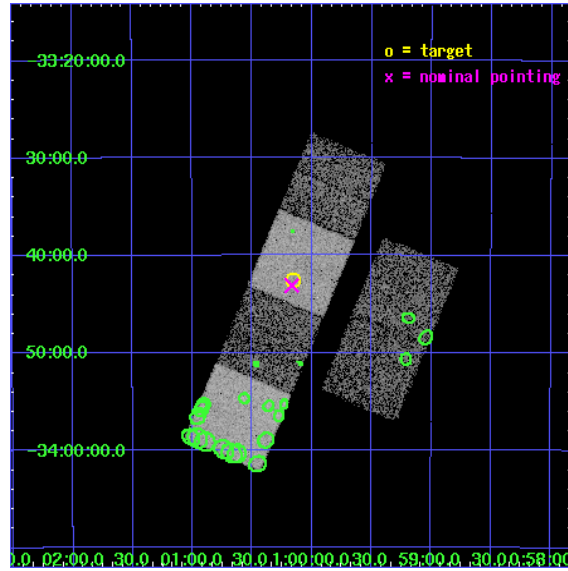
L2 Processing Date : Apr 7 2006

Contents

1	Front	2
2	OBI	3
2.1	OBI	3
2.1.1	Images	3
2.1.2	Bias	3
2.1.3	Parameters	4
2.1.4	Events	4
2.2	Compared Parameters	5
2.3	Aspect	6
2.4	Star Slots	9
2.4.1	Slot 3	9
2.4.2	Slot 4	10
2.4.3	Slot 5	11
2.4.4	Slot 6	12
2.4.5	Slot 7	13
2.5	FID Slots	14
2.5.1	Slot 0	14
2.5.2	Slot 1	15
2.5.3	Slot 2	16
3	Point Sources	17
A	Summary	18
A.1	Status	18
A.2	Comments	18

1 Front

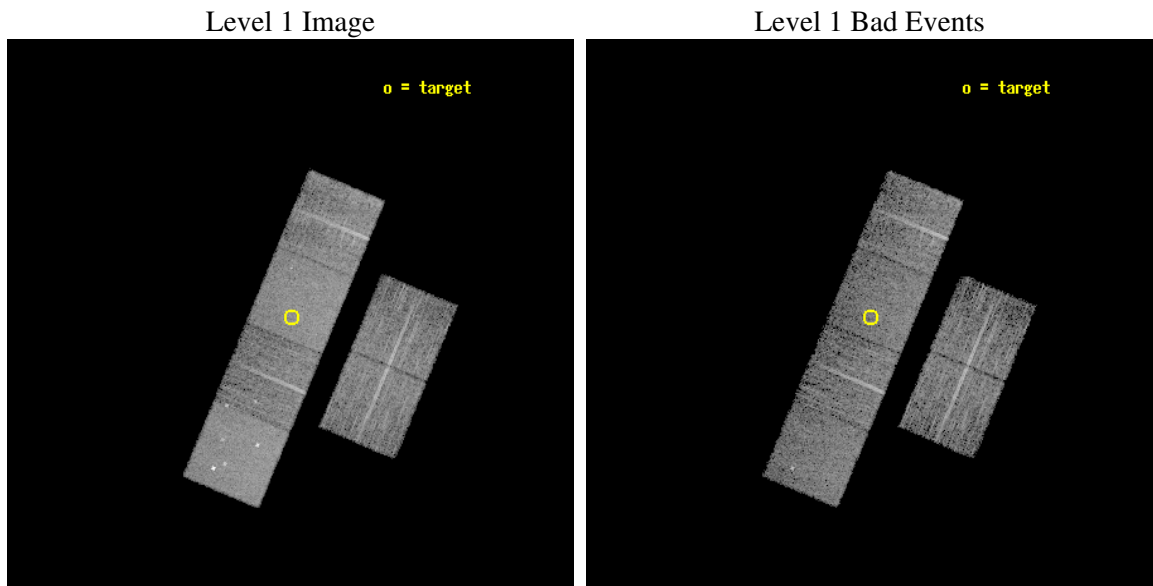
seq_num	600372
obs_id	4717
title	Using the Sculptor Dwarf Spheroidal Galaxy to Constrain X-ray Binary Production in Population II
observer	Dr. Thomas Maccarone
object	SCULPTOR DWARF SPHEROIDAL
dtcycle	0
cycle	P
ra_targ	15.039167
dec_targ	-33.708889
ra_nom	15.041616975075
dec_nom	-33.718281831444
roll_nom	292.62514623976
revision	2
ontime	6150.399977088
livetime	6072.5199092518
ontime2	6150.399977088
ontime3	6150.399977088
ontime5	6150.399977088
ontime6	6150.399977088
ontime7	6150.399977088
ontime8	6143.9181062579
l2events	71841



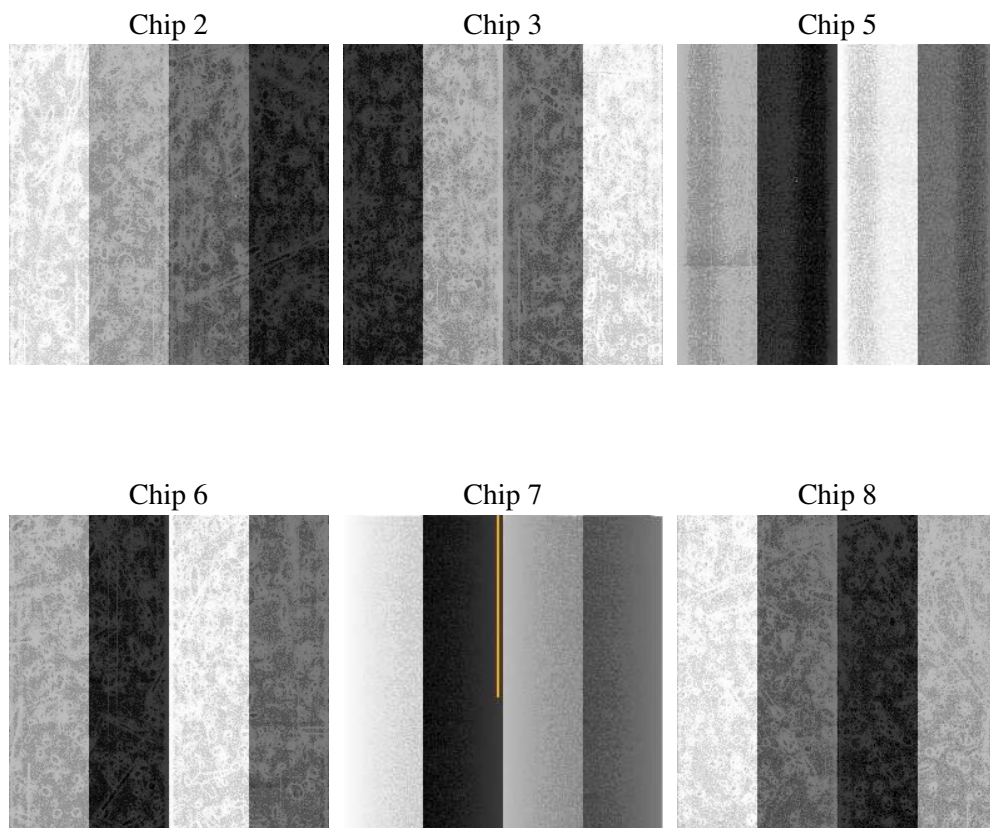
2 OBI

2.1 OBI

2.1.1 Images



2.1.2 Bias



2.1.3 Parameters

obi_num	0
ascdsver	7.6.7.1
caldsver	3.2.1
date	2006-04-07T15:09:33
revision	2

sched_exp_time	6000.000000
ontime	6349.129096359
ontime2	6349.129096359
ontime3	6349.129096359
ontime5	6349.129096359
ontime6	6349.129096359
ontime7	6349.129096359
ontime8	6342.647225529
l1events	338443

2.1.4 Events

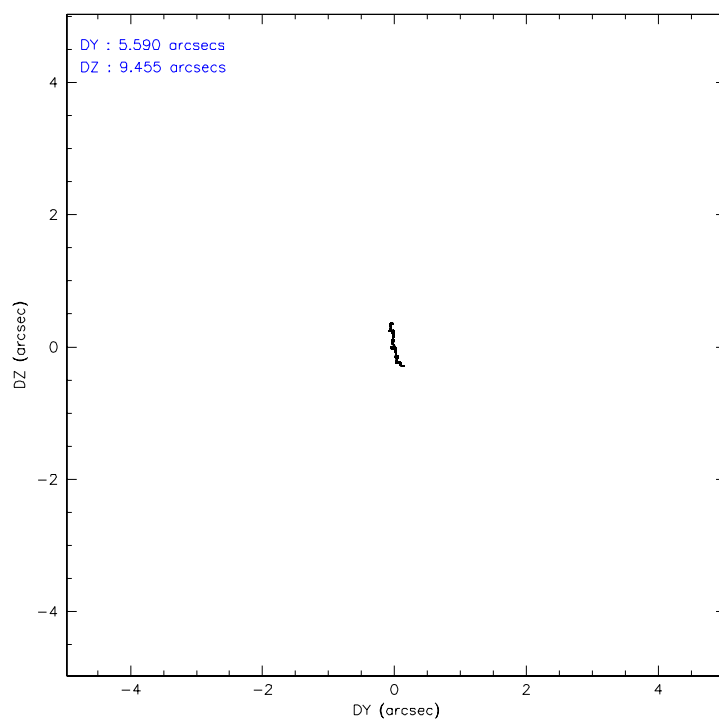
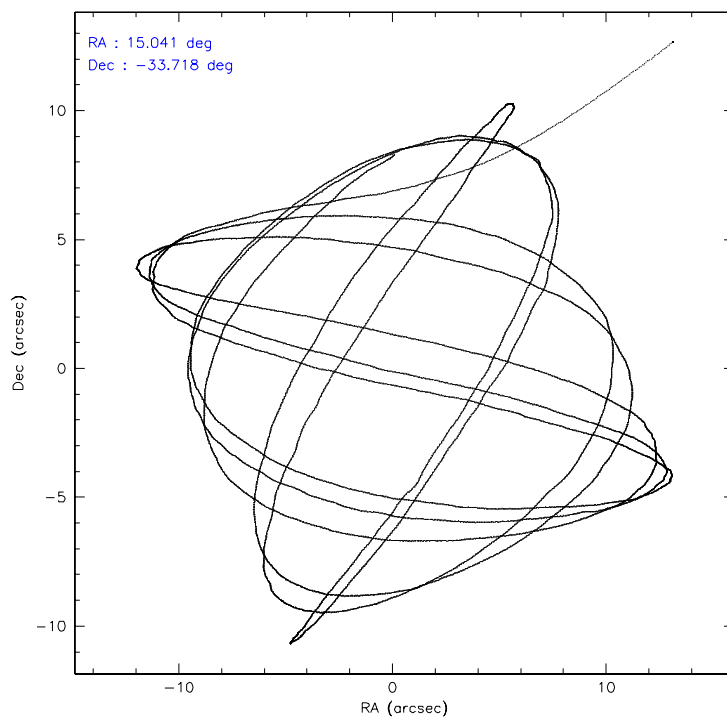
	ccd 2	ccd 3	ccd 5	ccd 6	ccd 7	ccd 8
level 1 events	48991	46499	72443	47454	64918	58138
rejected events	43594	41130	40826	41695	40627	45779
rejected %	88%	88%	56%	87%	62%	78%

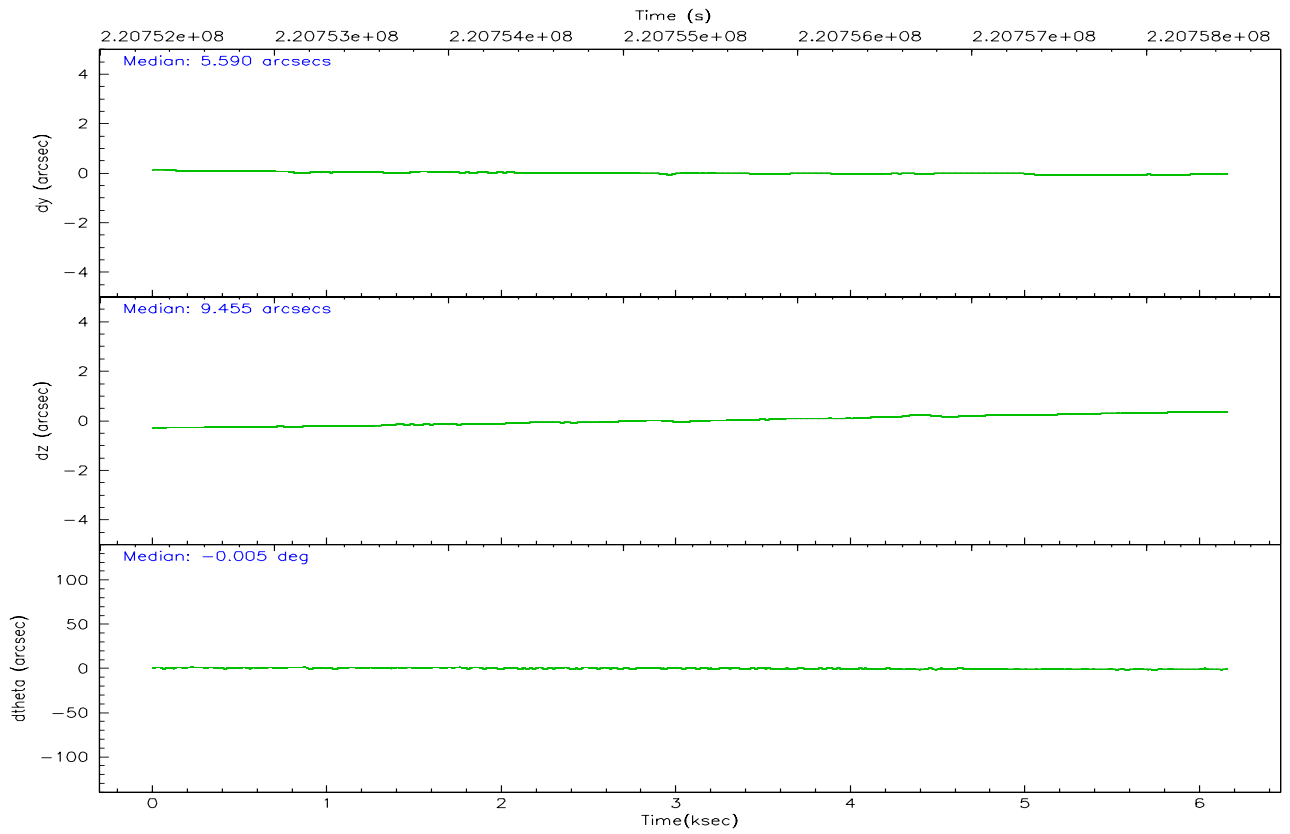
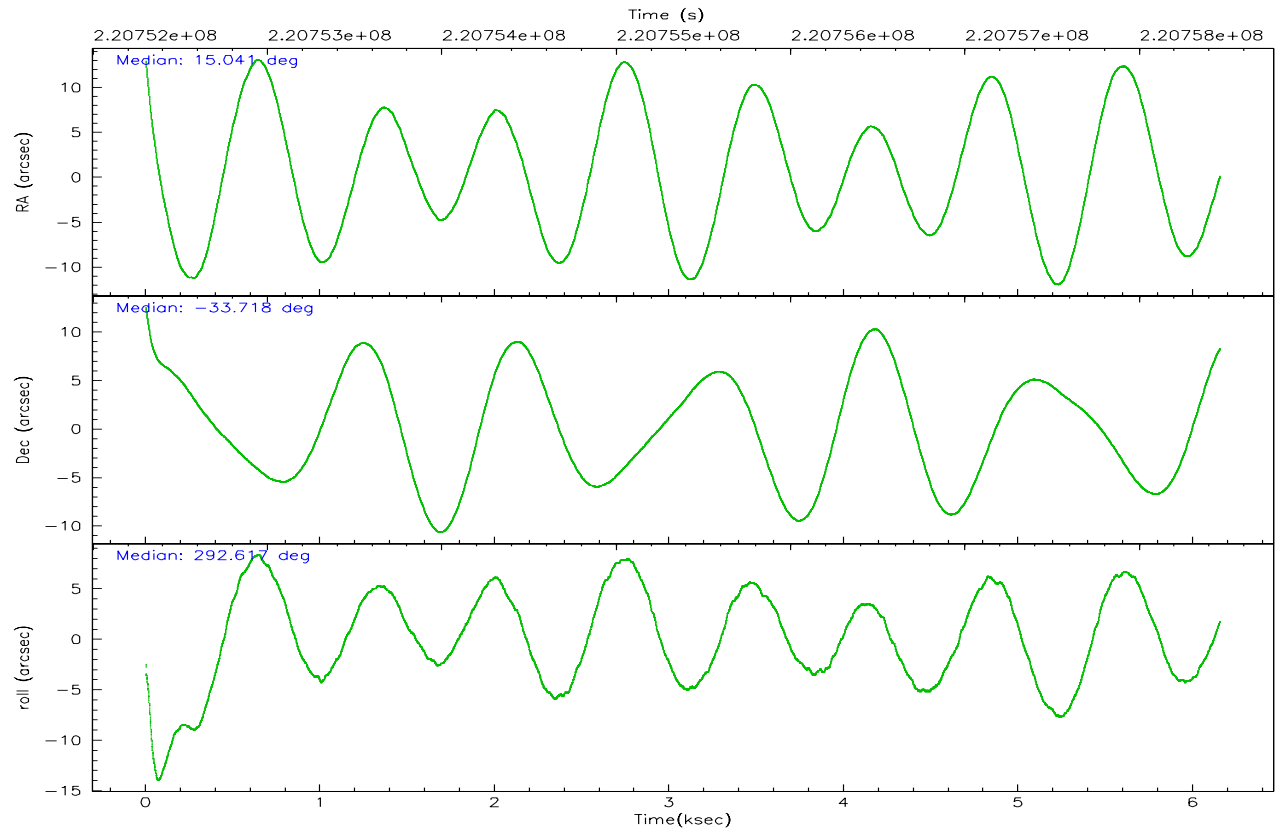
	ccd 2	ccd 3	ccd 5	ccd 6	ccd 7	ccd 8
grade 0 events	2472	2418	3700	2526	1535	4174
	5%	5%	5%	5%	2%	7%
grade 1 events	22	29	352	21	38	33
	0%	0%	0%	0%	0%	0%
grade 2 events	1130	1110	9770	1214	6269	2704
	2%	2%	13%	2%	9%	4%
grade 3 events	515	526	728	590	1217	1395
	1%	1%	1%	1%	1%	2%
grade 4 events	535	506	659	513	1195	1309
	1%	1%	0%	1%	1%	2%
grade 5 events	1869	2109	3413	2201	4188	2771
	3%	4%	4%	4%	6%	4%
grade 6 events	901	994	17802	1090	14866	3232
	1%	2%	24%	2%	22%	5%
grade 7 events	41547	38807	36019	39299	35610	42520
	84%	83%	49%	82%	54%	73%

2.2 Compared Parameters

Parameter	Planned	Actual	Parameter	Planned	Actual
Instrument	ACIS	ACIS	Obspar format version number	6	6
Detector	ACIS-235678	ACIS-235678	Obspar file type	PREDICTED	ACTUAL
Grating	NONE	NONE	Obspar update status	NONE	UPDATED
Data mode	VFAINT	VFAINT	On-chip summing requested	N	N
Observation mode	POINTING	POINTING	Subarray requested	NONE	NONE
Pointing RA	15.015413	15.04161697507487	Alternating exposures requested	N	N
Pointing Dec	-33.702092	-33.71828183144362	Primary exposure time	0.000000	3.2
Pointing Roll	292.453971	292.6251462397572			
SIM focus pos (mm)	-0.684267	-0.6828225247311905			
SIM defocus (mm)	0	0.001444936568705701			
SIM translation stage pos (mm)	-190.132523	-190.1400660498719			
SIM translation stage offset (mm)	0	0.00754346686406393			
Observation start time	220752463.184000	220751308.07918			
Observation start date	2004-12-30T00:06:39	2004-12-29T23:48:28			
Observation end time	220758463.184000	220759850.94207			
Observation end date	2004-12-30T01:46:39	2004-12-30T02:10:50			
Read mode	TIMED	TIMED			

2.3 Aspect



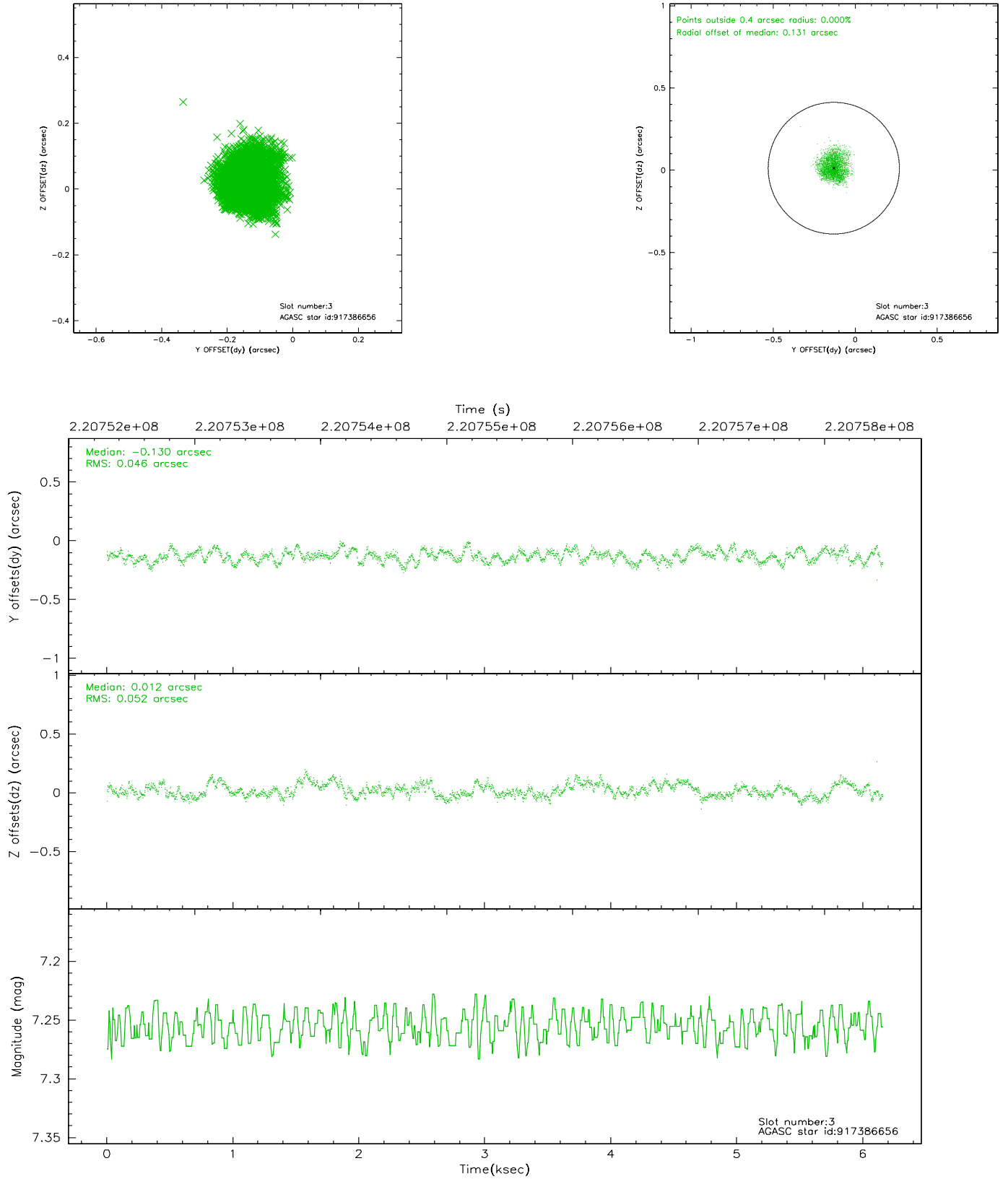


Slot Statistics

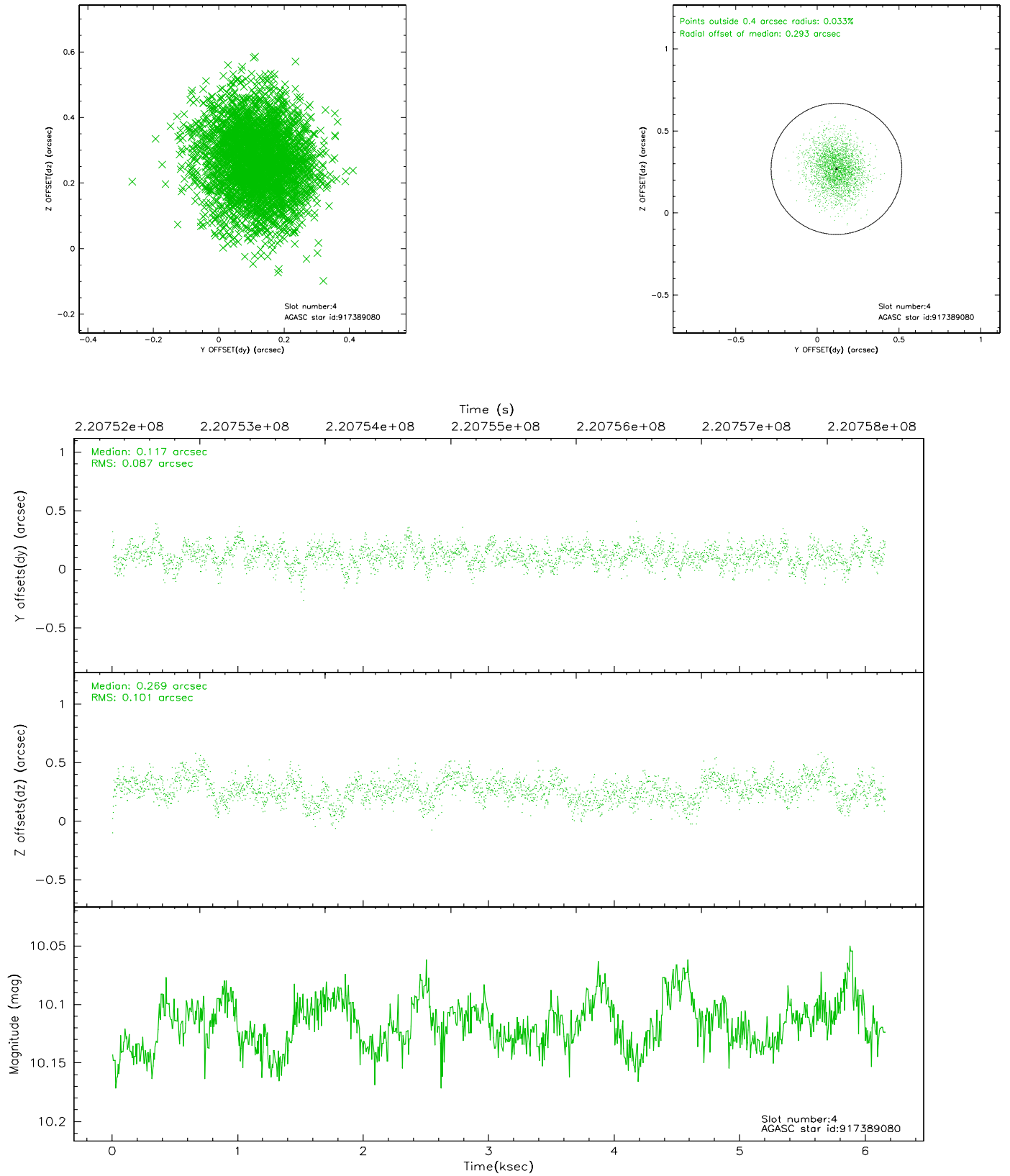
slot	status	id	mag	n_pts	med_dy	med_dz	dr1	dr2	ra	dec	mean_y	mean_z
0	FID	ACIS-S-2	7.10	1502	-0.059	-0.021	0.008	0.013	0.000000	0.000000	-758.35	-1730.74
1	FID	ACIS-S-4	7.20	1502	0.080	0.034	0.005	0.010	0.000000	0.000000	2154.61	176.84
2	FID	ACIS-S-5	7.23	1502	-0.052	-0.005	0.008	0.012	0.000000	0.000000	-1809.97	171.53
3	GUIDE	917386656	7.26	3004	-0.130	0.012	0.075	0.115	15.342124	-33.359890	-761.73	1378.12
4	GUIDE	917389080	10.12	3001	0.117	0.269	0.143	0.229	15.722484	-33.662555	684.48	2010.73
5	GUIDE	917389288	9.57	3003	-0.071	0.036	0.094	0.153	15.394706	-33.185862	-1278.63	1765.92
6	GUIDE	917650528	8.72	3003	-0.104	-0.132	0.085	0.141	14.274554	-33.869842	-279.99	-2279.57
7	GUIDE	917651048	9.65	3002	0.189	-0.185	0.099	0.161	14.655628	-34.424089	1996.79	-1981.28

2.4 Star Slots

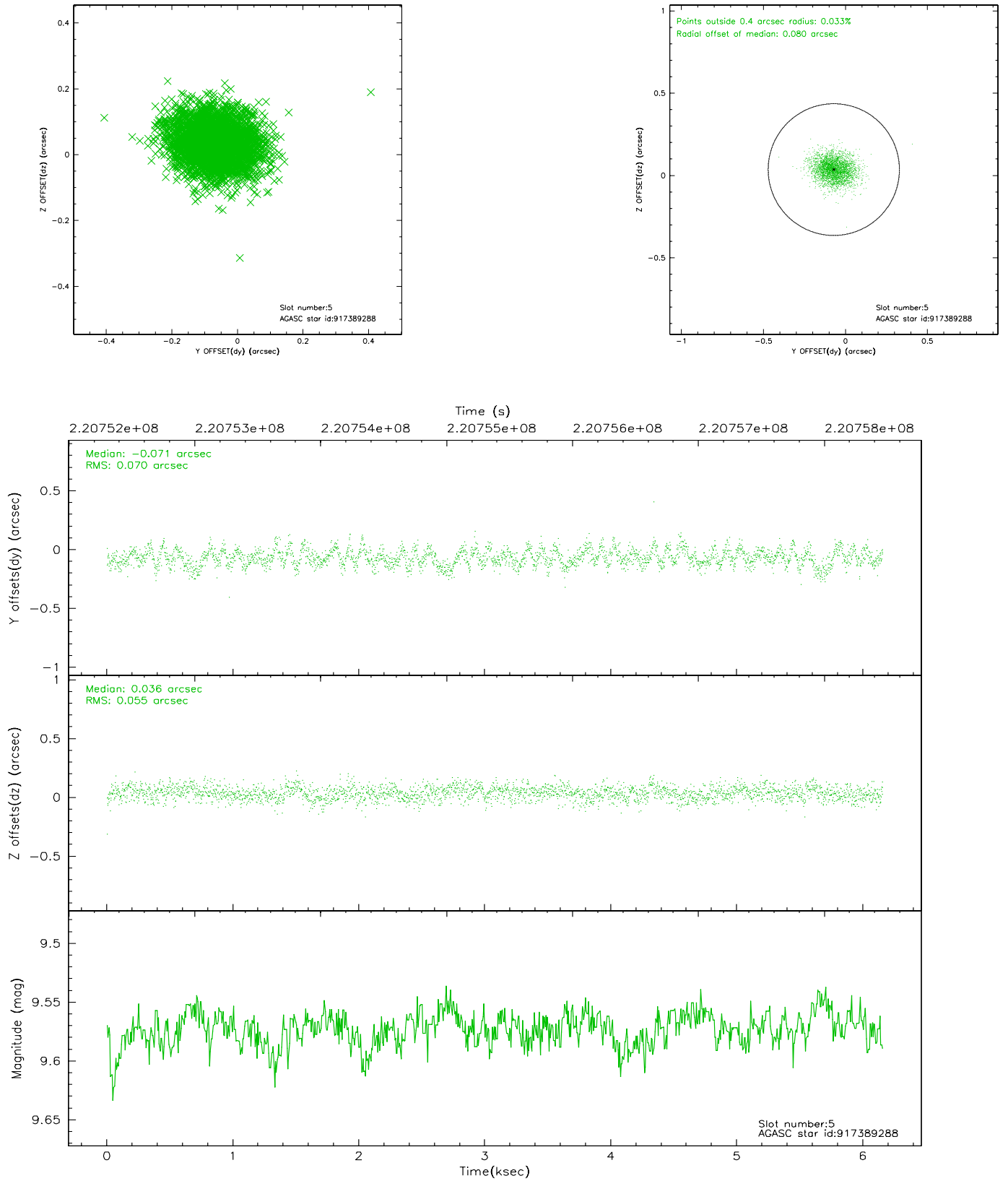
2.4.1 Slot 3



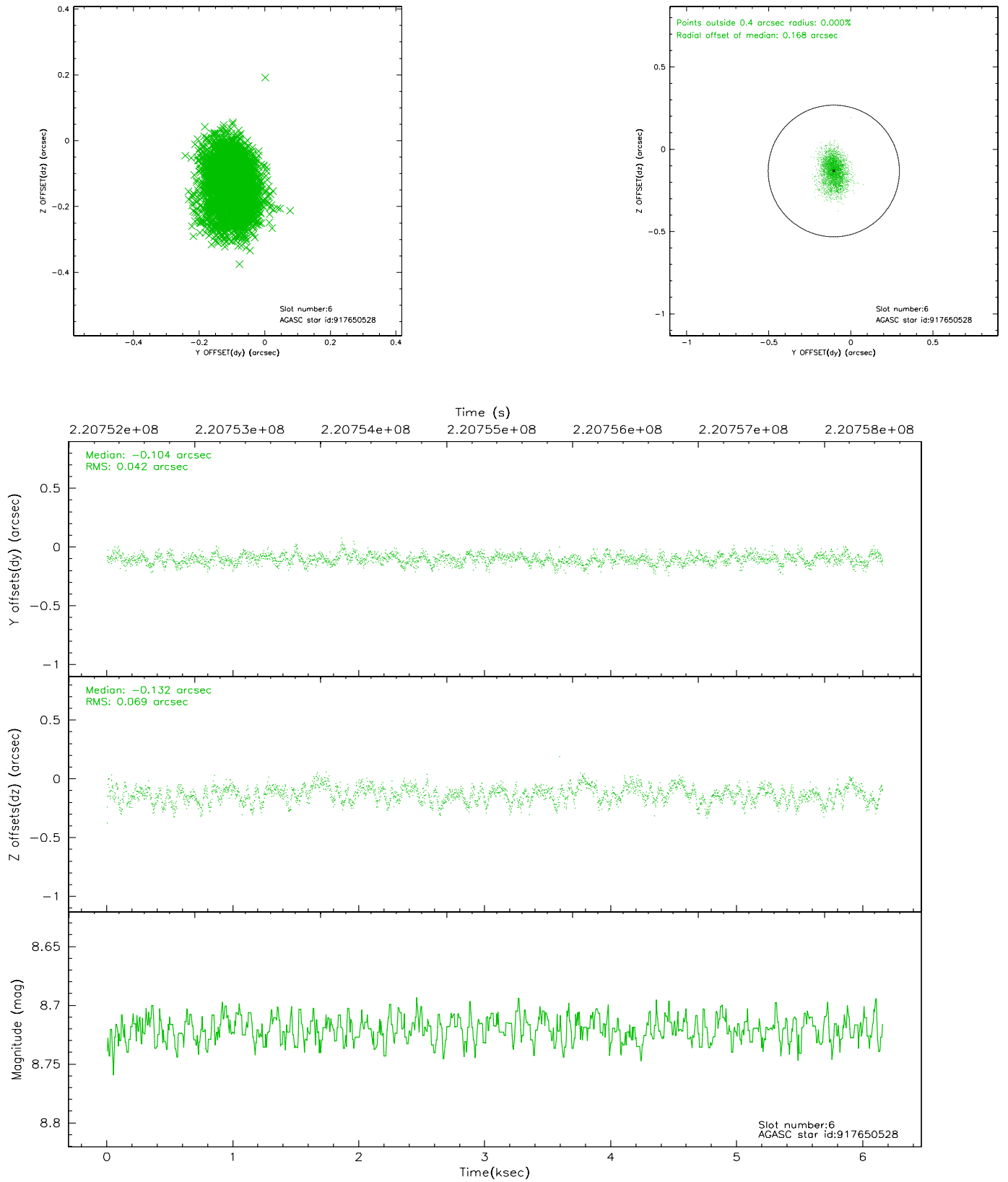
2.4.2 Slot 4



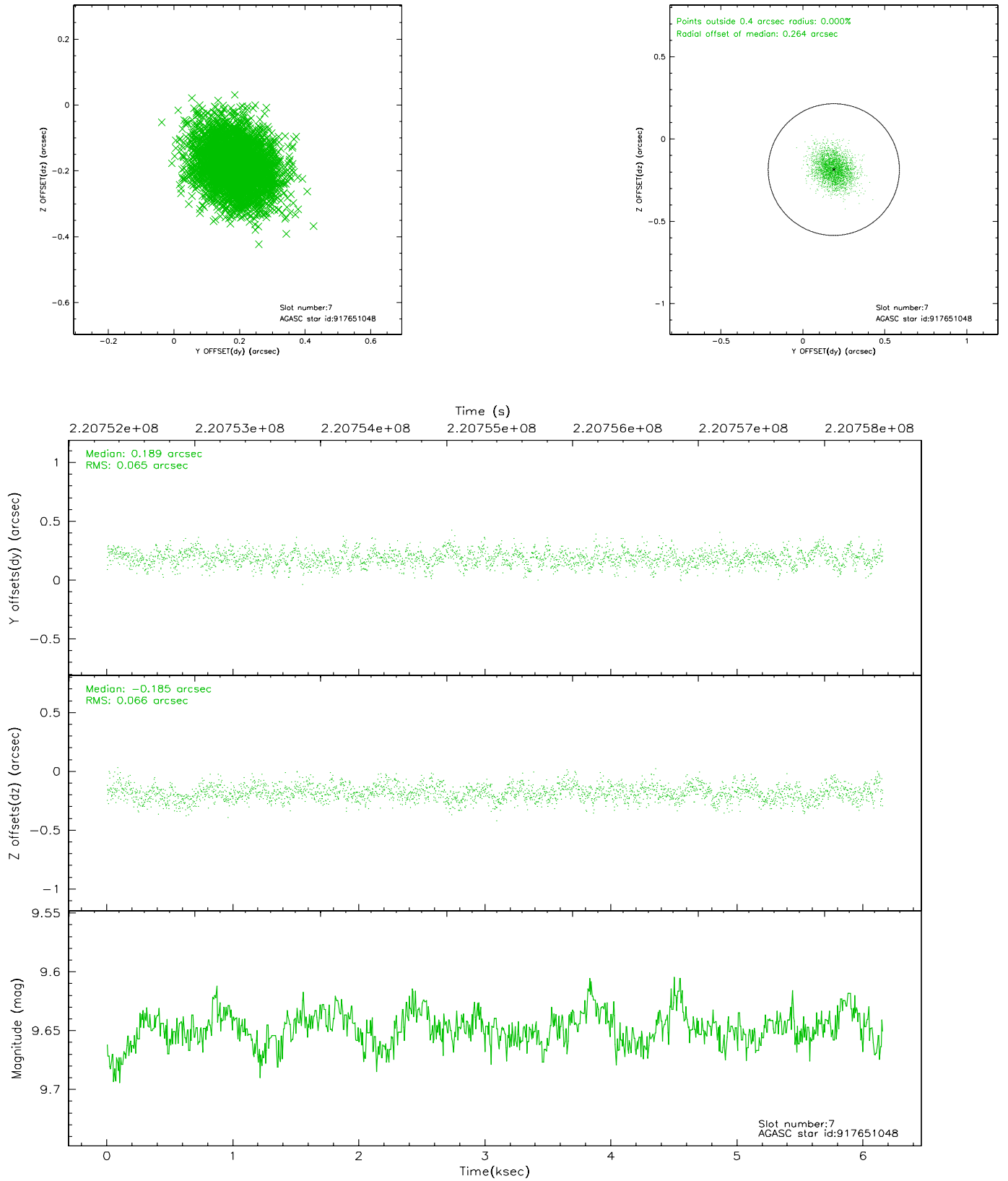
2.4.3 Slot 5



2.4.4 Slot 6

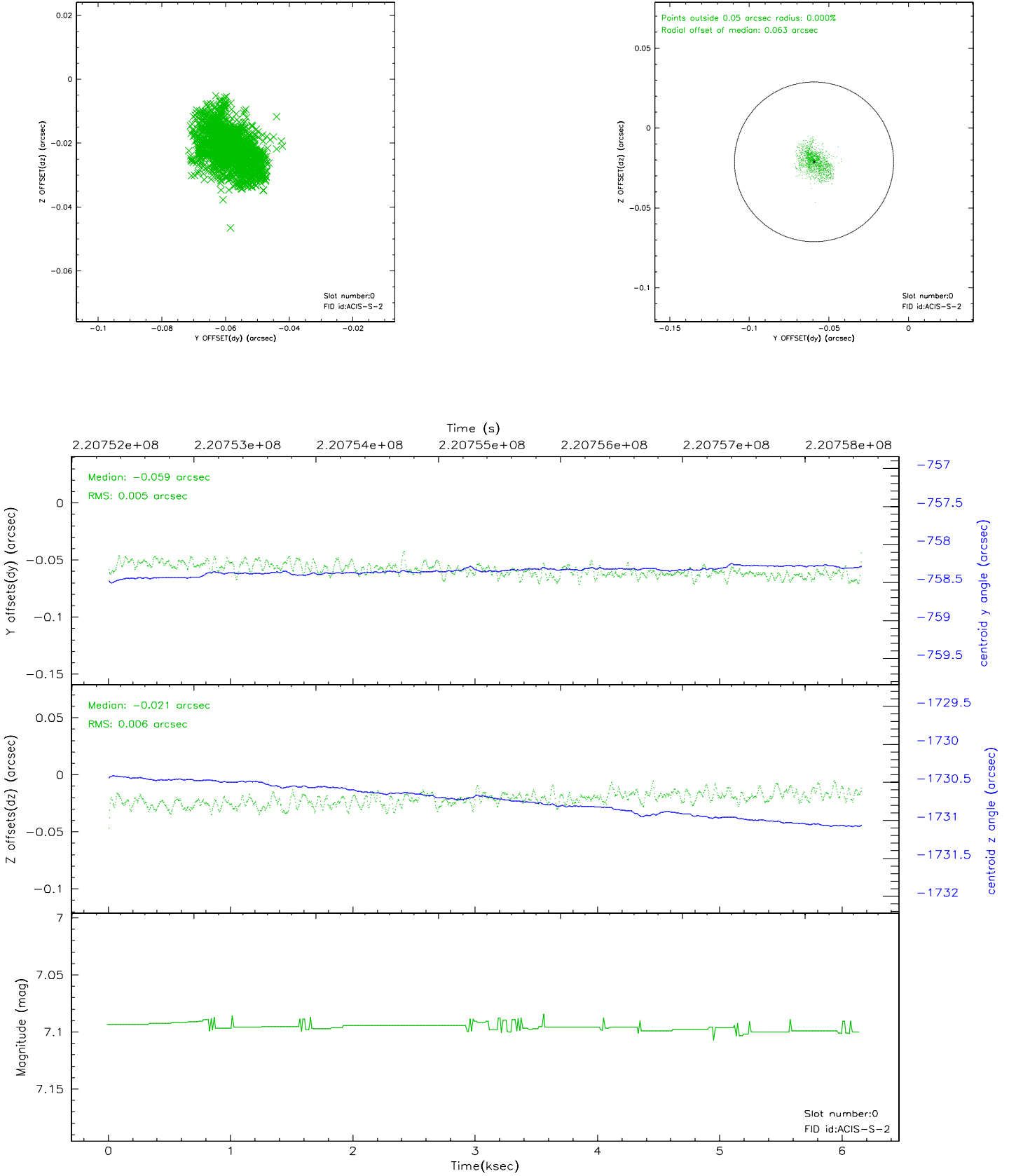


2.4.5 Slot 7

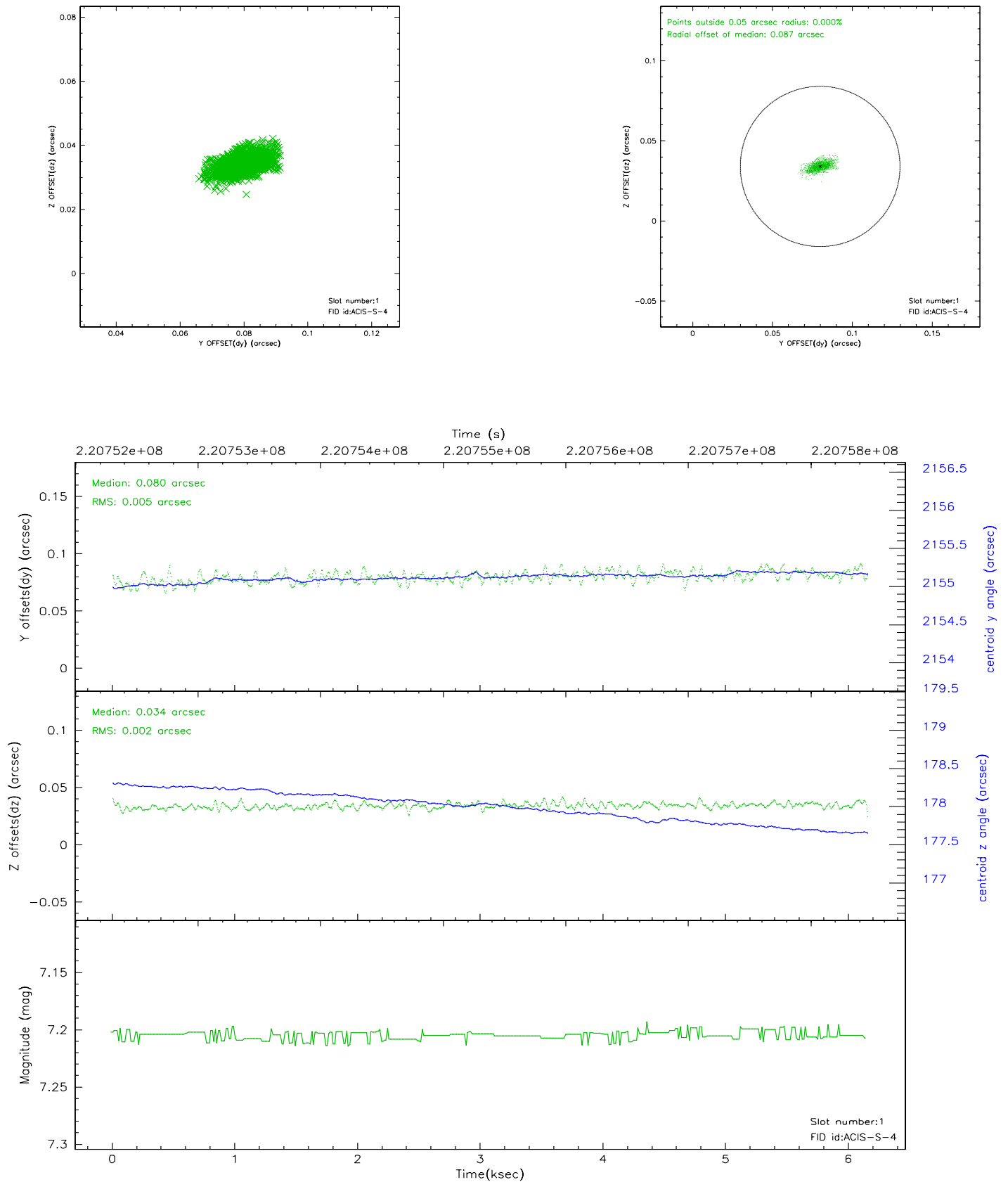


2.5 FID Slots

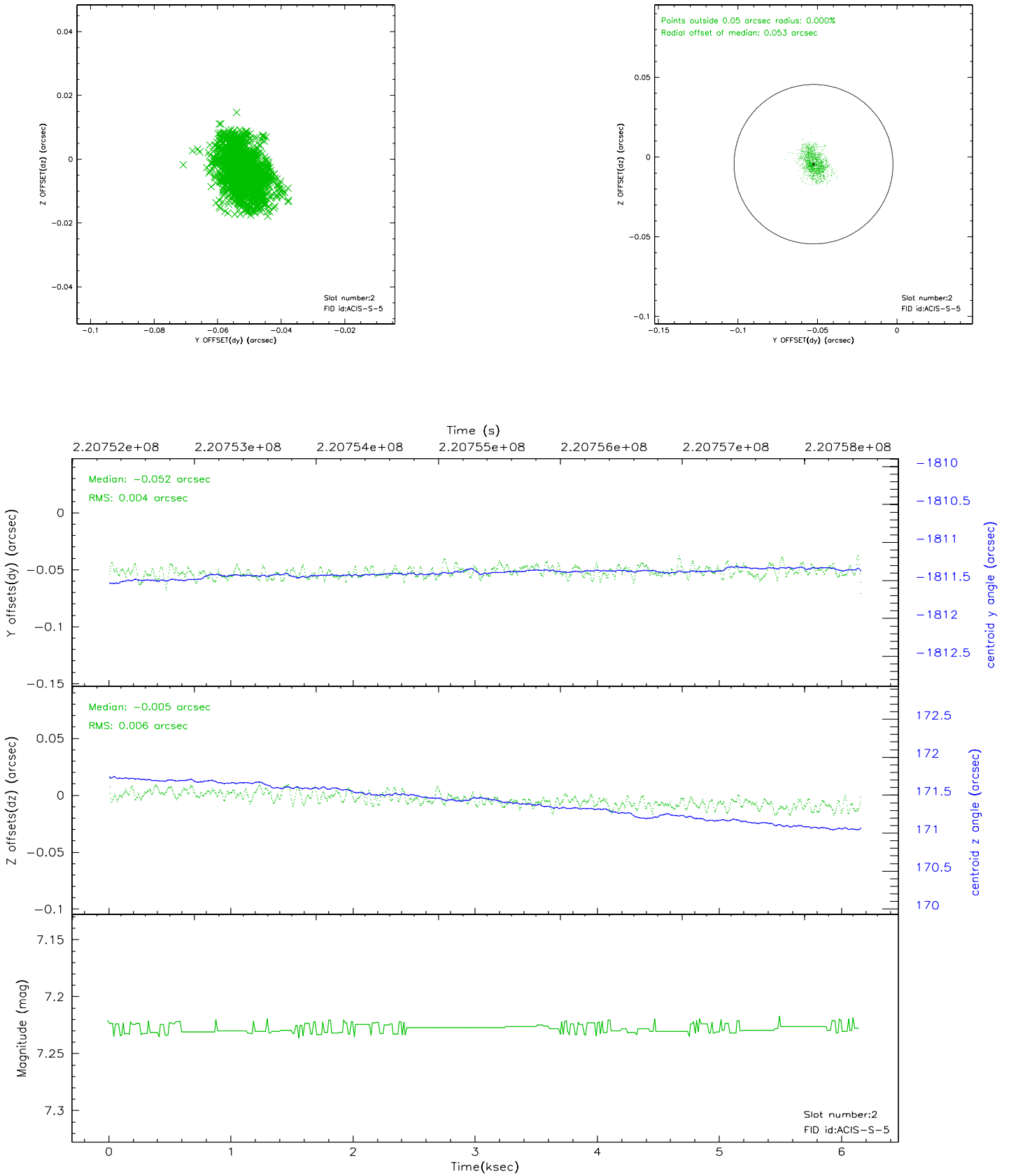
2.5.1 Slot 0



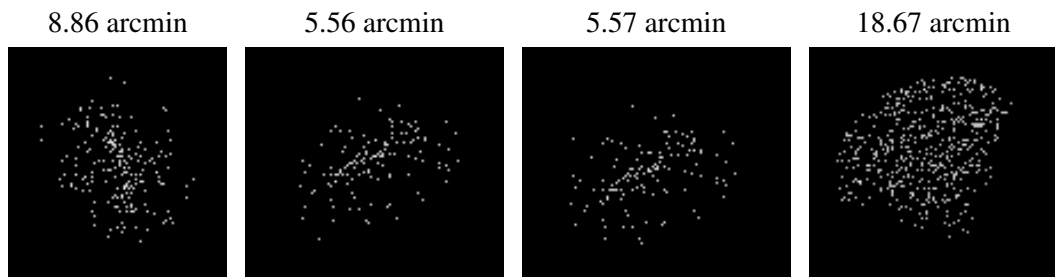
2.5.2 Slot 1



2.5.3 Slot 2



3 Point Sources



A Summary

A.1 Status

V&V Scientist	Beth Sundheim
V&V Date (YYYY-MM-DD)	2006.04.07
V&V Edition	1
V&V Disposition and Status	OK
V&V Charge Time	6.150399

A.2 Comments