

V&V Reference Report

L2 ASCDS Version : 8.5

Observation 4627 - L2 Version 3
Chandra X-Ray Center

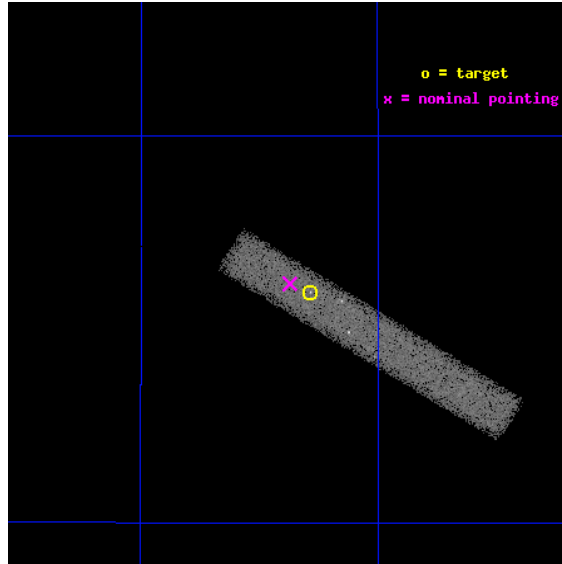
L2 Processing Date : Dec 7 2012

Contents

1	Front	2
2	OBI	3
2.1	OBI	3
2.1.1	Images	3
2.1.2	Bias	3
2.1.3	Parameters	4
2.1.4	Events	4
2.2	Compared Parameters	5
2.3	Aspect	6
2.4	Star Slots	9
2.4.1	Slot 3	9
2.4.2	Slot 4	10
2.4.3	Slot 5	11
2.4.4	Slot 6	12
2.4.5	Slot 7	13
2.5	FID Slots	14
2.5.1	Slot 0	14
2.5.2	Slot 1	15
2.5.3	Slot 2	16
A	Summary	17
A.1	Status	17
A.2	Comments	17

1 Front

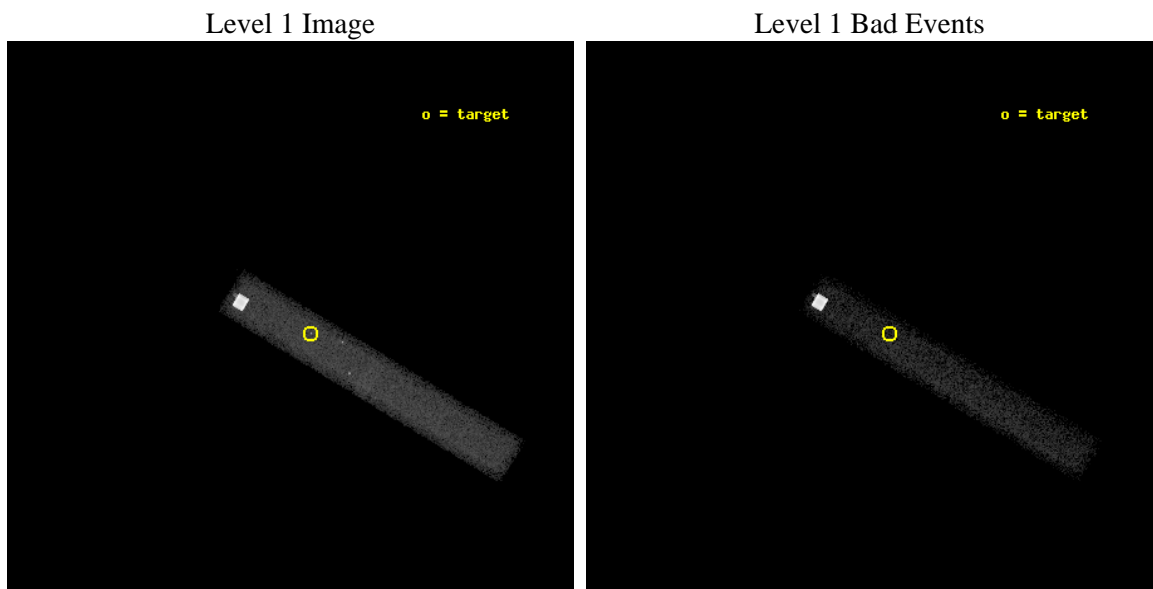
seq_num	500452	Sequence number
obs_id	4627	Observation id
title	Prompt Chandra Observations of Nearby Supernovae	Proposal title
observer	Prof. Walter Lewin	Principal investigator
object	SN 2004dj	Source name
dtcycle	0	
cycle	P	events from which exps? Prim/Second/Both
ra_targ	114.32125	Observer's specified target RA [deg]
dec_targ	65.599528	Observer's specified target Dec [deg]
ra_nom	114.34315795575	Nominal RA [deg]
dec_nom	65.602987930251	Nominal Dec [deg]
roll_nom	31.032908495836	Nominal Roll [deg]
revision	3	Processing version of data
ontime	45123.600672364	Sum of GTIs [s]
livetime	40924.723990898	Livetime [s]
ontime7	45123.600672364	Sum of GTIs [s]
l2events	28083	Number of level 2 events



2 OBI

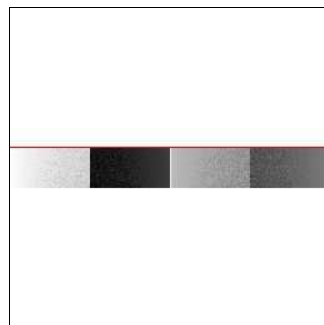
2.1 OBI

2.1.1 Images



2.1.2 Bias

Chip 7



2.1.3 Parameters

obi_num	0	Obi number	sched_exp_time	45000.000000	[s] Scheduled observation exposure time
ascdsver	8.5	Processing system revision	ontime	45123.600672364	Sum of GTIs [s]
caldsver	4.5.4	 	ontime7	45123.600672364	Sum of GTIs [s]
date	2012-12-07T01:09:36	Date and time of file creation	l1events	374252	Number of level 1 events
revision	3	Processing version of data			

2.1.4 Events

	ccd 7
level 1 events	374252
rejected events	344978
rejected %	92%

	ccd 7
grade 0 events	3445
	0%
grade 1 events	105144
	28%
grade 2 events	5911
	1%
grade 3 events	3873
	1%
grade 4 events	3844
	1%
grade 5 events	5803
	1%
grade 6 events	13077
	3%
grade 7 events	233155
	62%

2.2 Compared Parameters

Parameter	Planned	Actual	Parameter	Planned	Actual
Instrument	ACIS	ACIS	Obspar format version number	7	7
Detector	ACIS-7	ACIS-7	Obspar file type	PREDICTED	ACTUAL
Grating	NONE	NONE	Obspar update status	NONE	UPDATED
Data mode	FAINT	FAINT	Number of optional ACIS chips dropped	0	0
Observation mode	POINTING	POINTING	On-chip summing requested	N	N
[deg] Pointing RA	114.312013	114.3431579557501	Subarray requested	CUSTOM	1/8
[deg] Pointing Dec	65.578978	65.60298793025063	Subarray start row	449	449
[deg] Pointing Roll	30.904645	31.03290849583563	Subarray row count	128	128
[mm] SIM focus pos	-0.684267	-0.6828225247311905	Alternating exposures requested	N	N
[mm] SIM defocus	0	0.001444936568705701	[s] Primary exposure time	0.000000	0.4
[mm] SIM translation stage pos	-190.132523	-190.1400660498719			
[mm] SIM translation stage offset	0	0.00754346686406393			
[s] Observation start time (MET)	208423522.184000	208422025.32722			
Observation start date	2004-08-09T07:24:18	2004-08-09T07:00:25			
[s] Observation end time (MET)	208468522.184000	208469311.14182			
Observation end date	2004-08-09T19:54:18	2004-08-09T20:08:31			
Read mode	TIMED	TIMED			

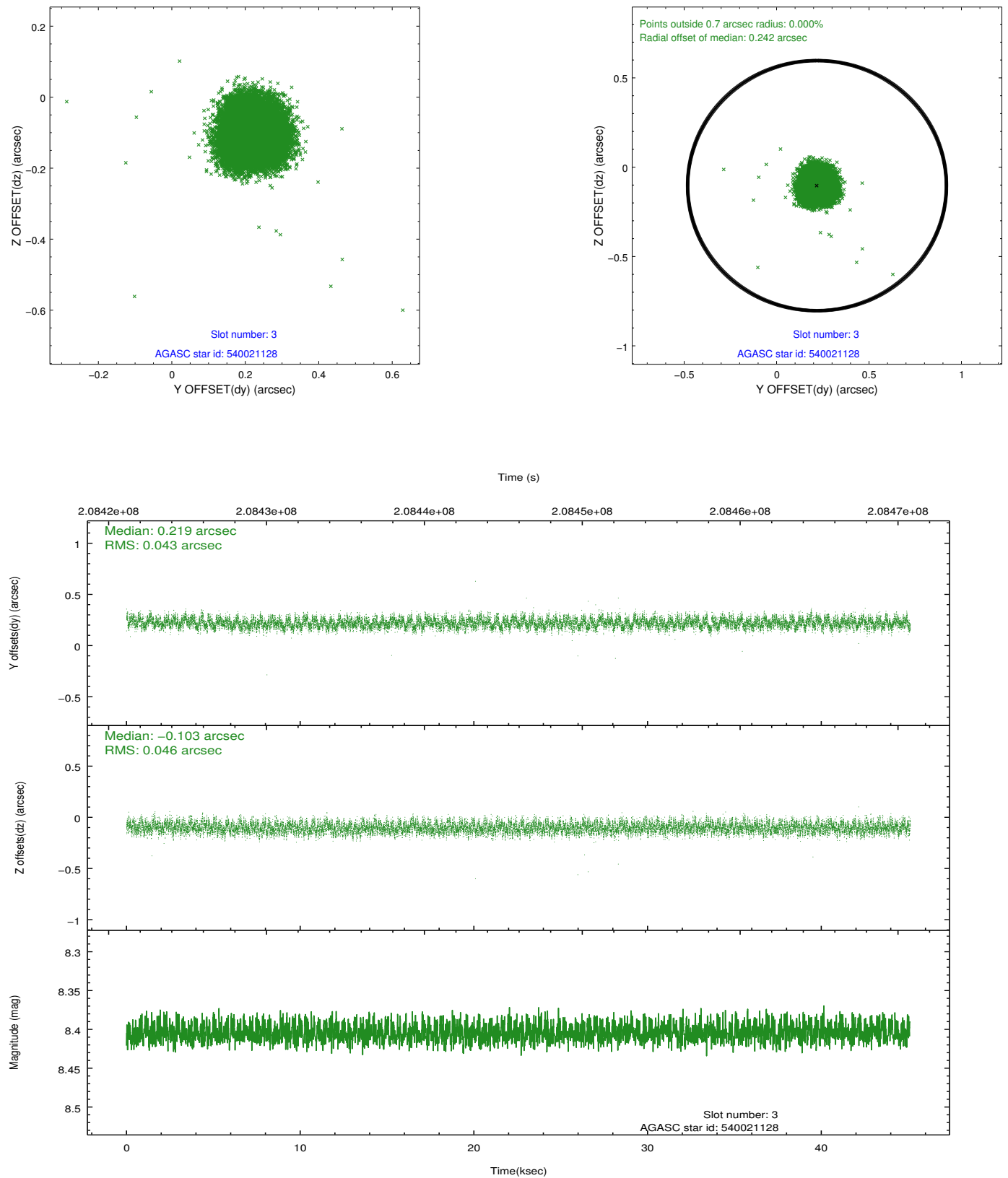
2.3 Aspect

Slot Statistics

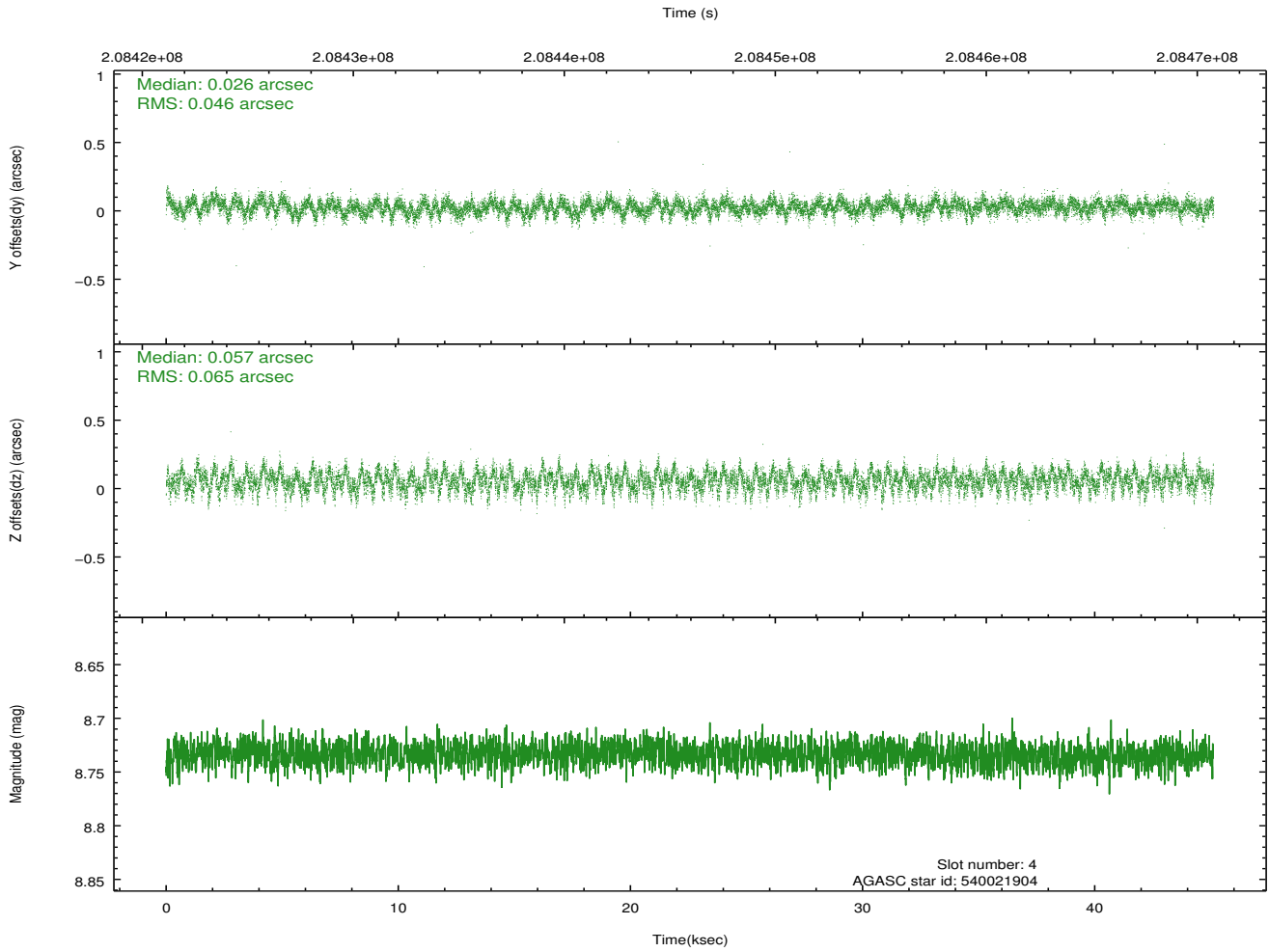
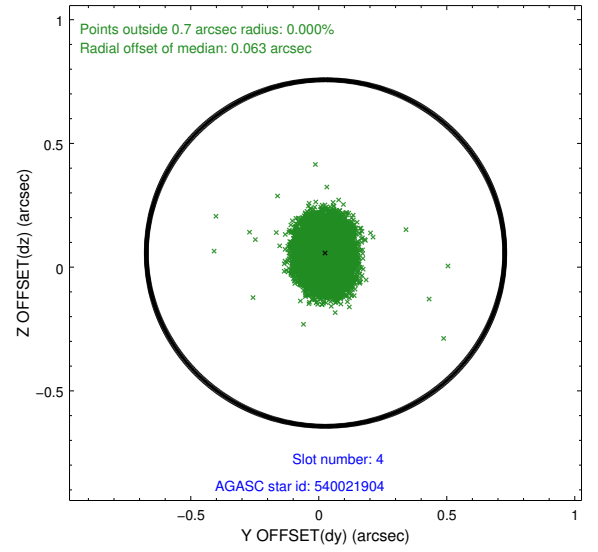
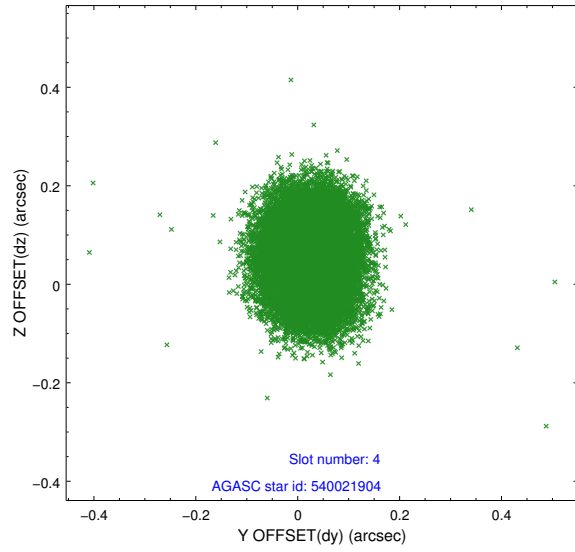
slot	status	id	mag	n_pts	med_dy	med_dz	dr1	dr2	ra	dec	mean_y	mean_z
0	FID	ACIS-S-1	7.18	11006	0.057	-0.036	0.008	0.015	0.000000	0.000000	937.21	-1728.22
1	FID	ACIS-S-2	7.10	11005	-0.029	0.022	0.007	0.011	0.000000	0.000000	-758.78	-1732.66
2	FID	ACIS-S-5	7.23	11006	-0.052	0.020	0.009	0.016	0.000000	0.000000	-1811.99	169.48
3	GUIDE	540021128	8.40	22002	0.219	-0.103	0.067	0.105	114.291258	65.330448	-485.73	-751.78
4	GUIDE	540021904	8.73	22002	0.026	0.057	0.085	0.138	114.203372	65.242134	-762.92	-956.26
5	GUIDE	540152256	7.77	22010	-0.213	0.145	0.056	0.092	116.023663	65.438119	1955.13	-1720.29
6	GUIDE	540543672	9.06	21998	0.005	-0.008	0.083	0.135	114.975339	66.278476	2120.40	1671.84
7	GUIDE	540541056	8.91	22006	-0.034	-0.087	0.067	0.108	114.633382	66.183962	1520.10	1629.94

2.4 Star Slots

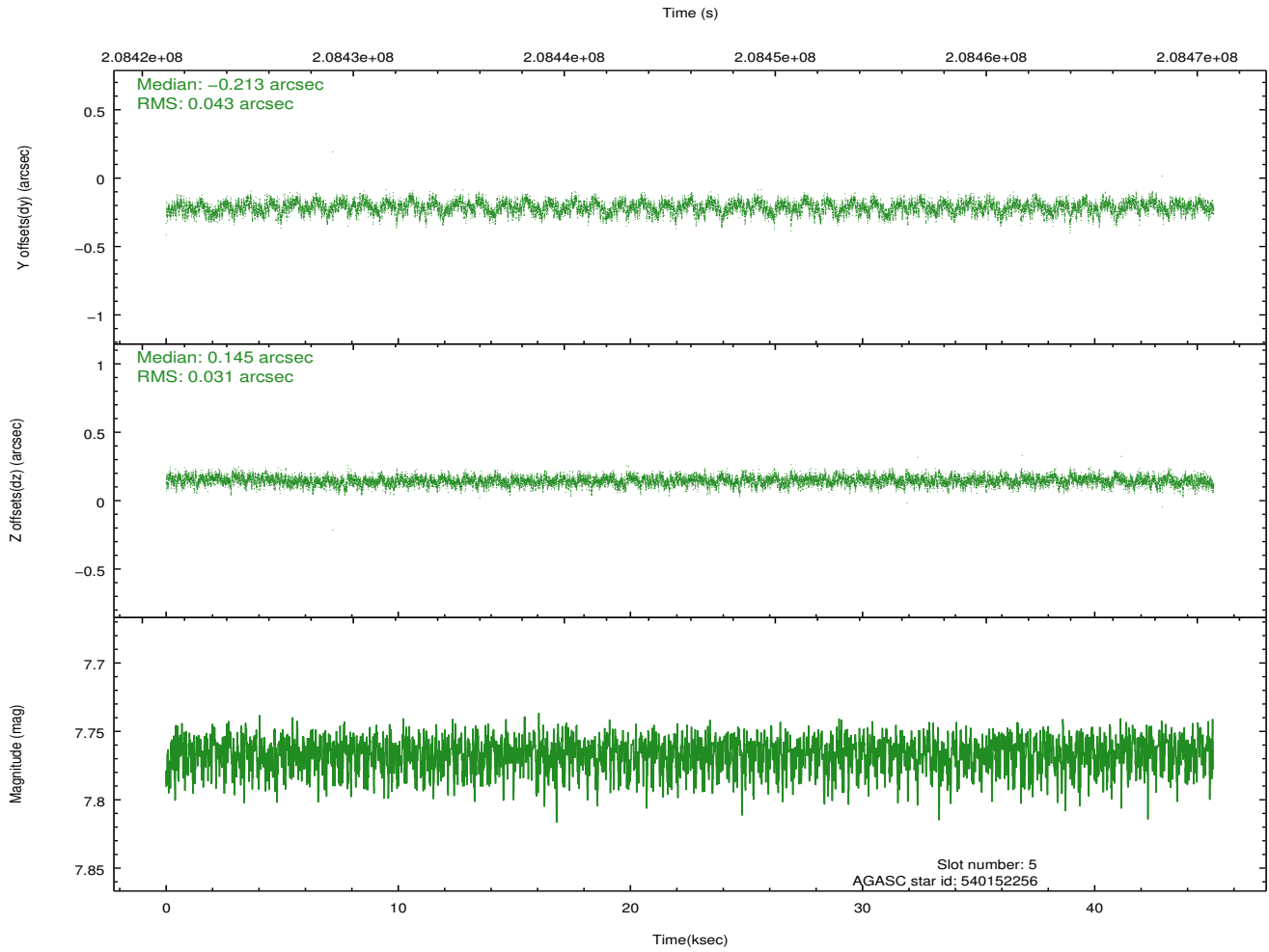
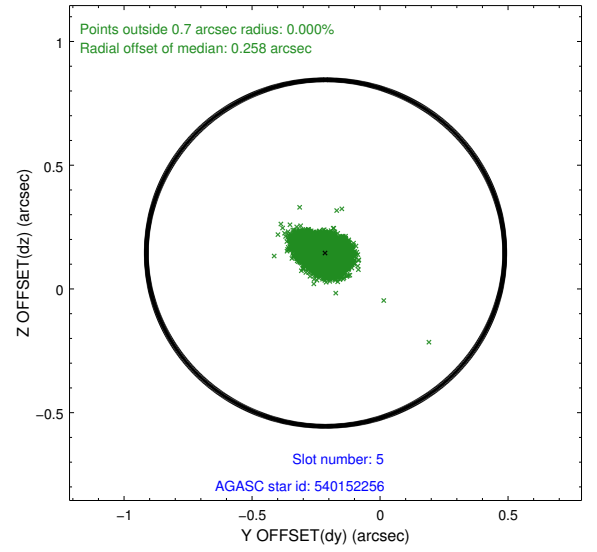
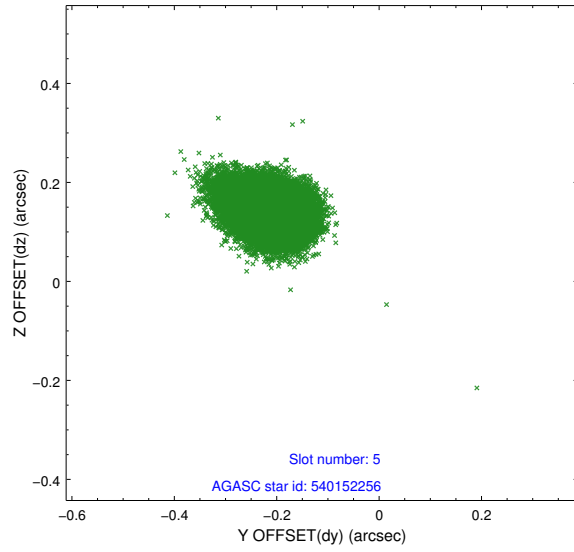
2.4.1 Slot 3



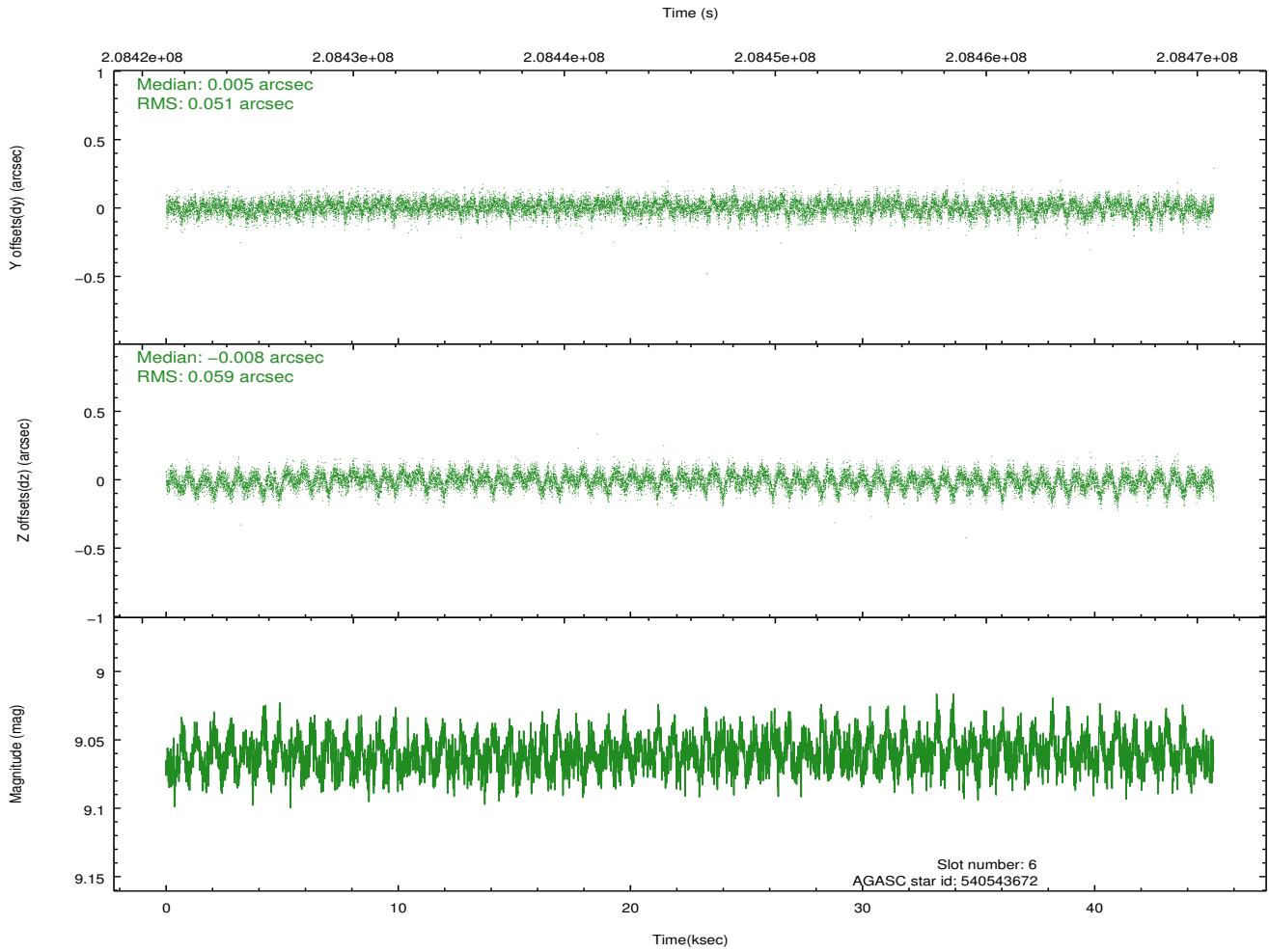
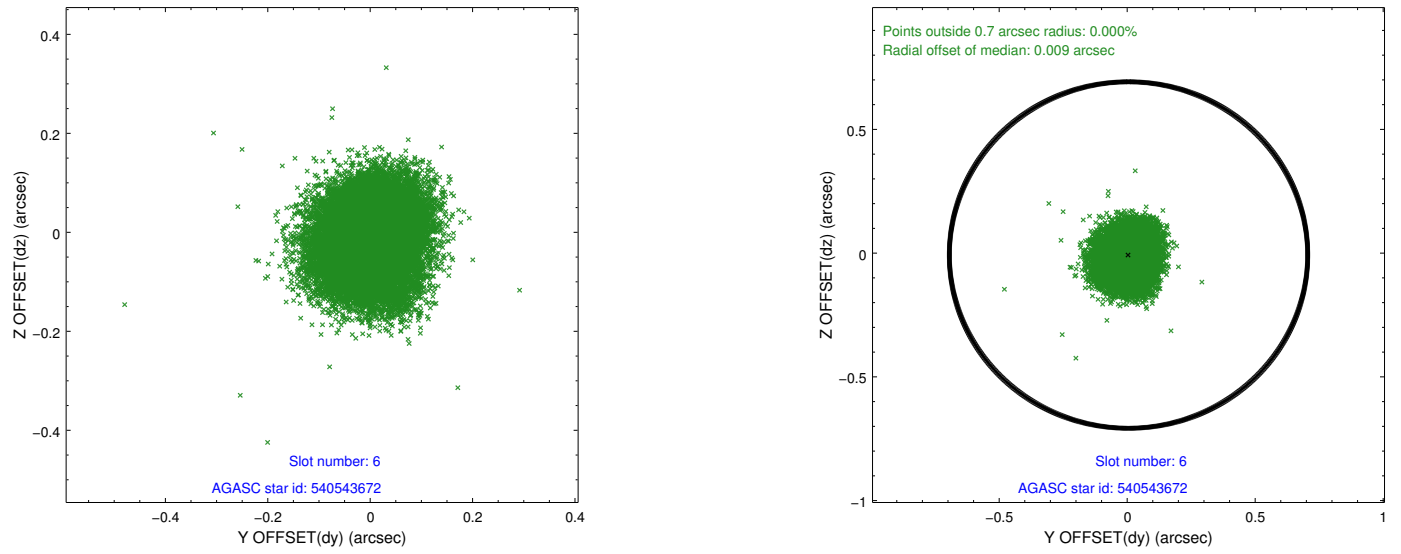
2.4.2 Slot 4



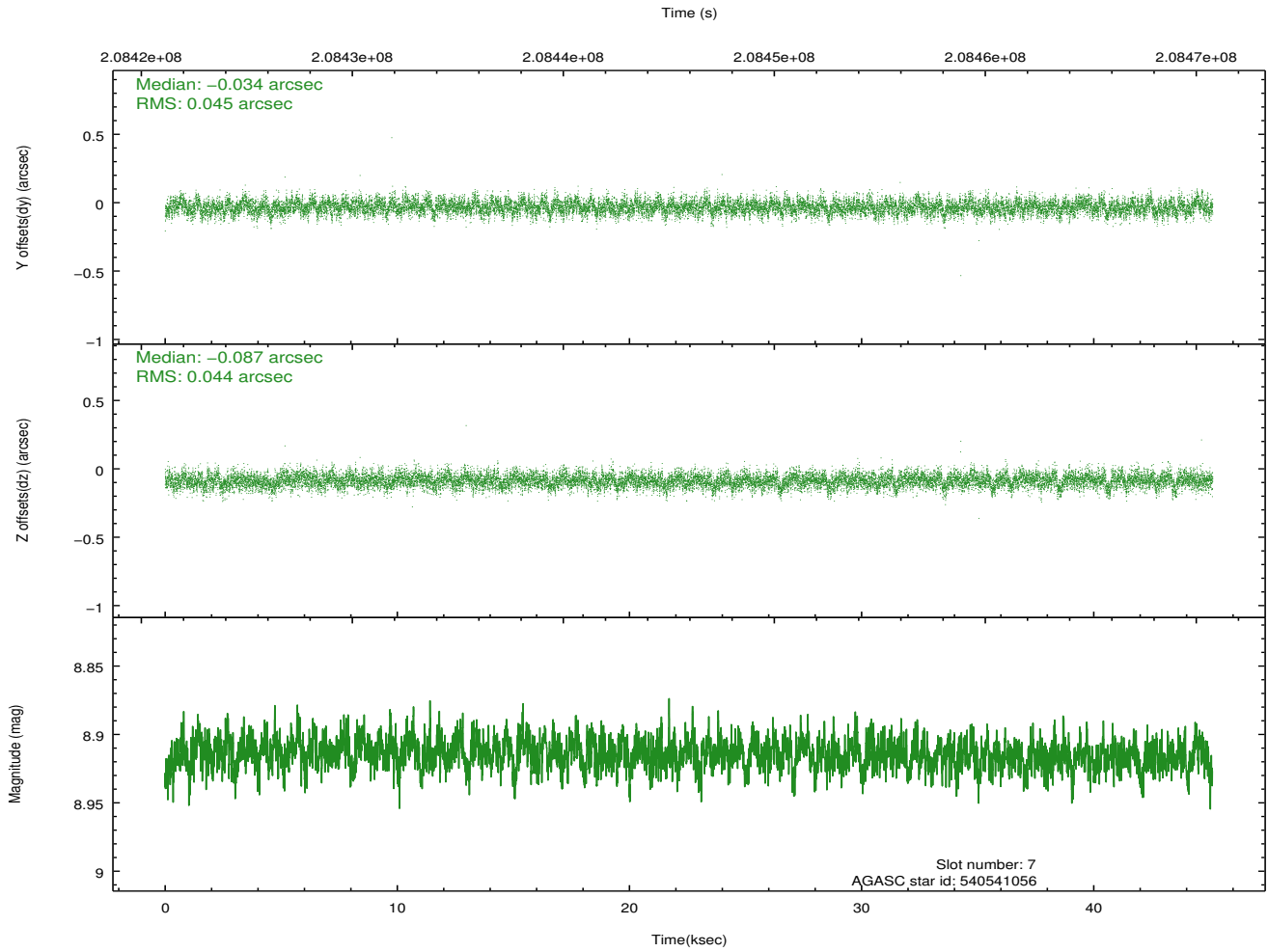
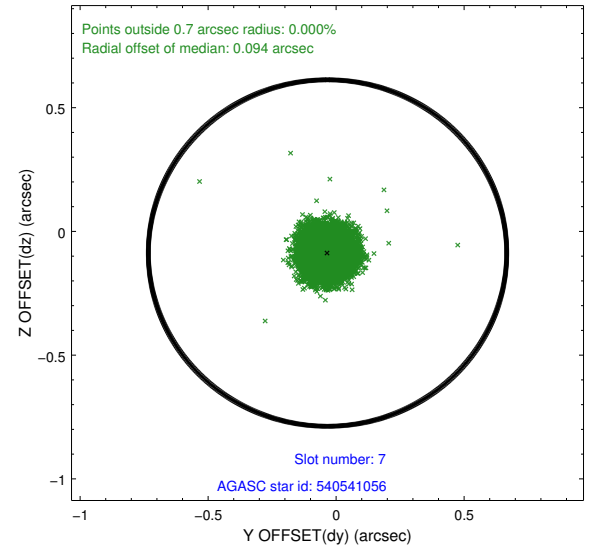
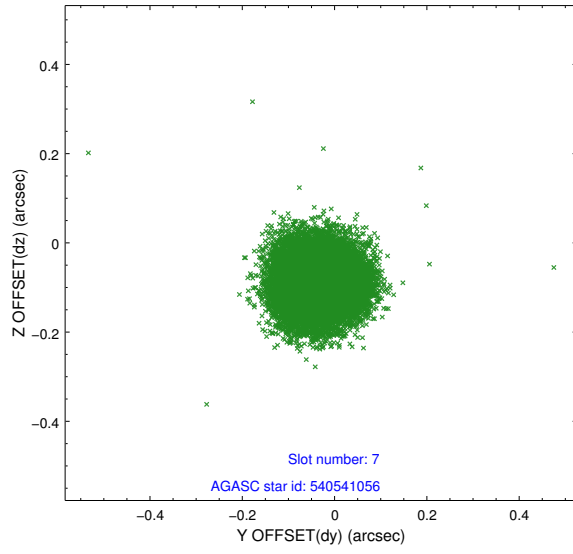
2.4.3 Slot 5



2.4.4 Slot 6

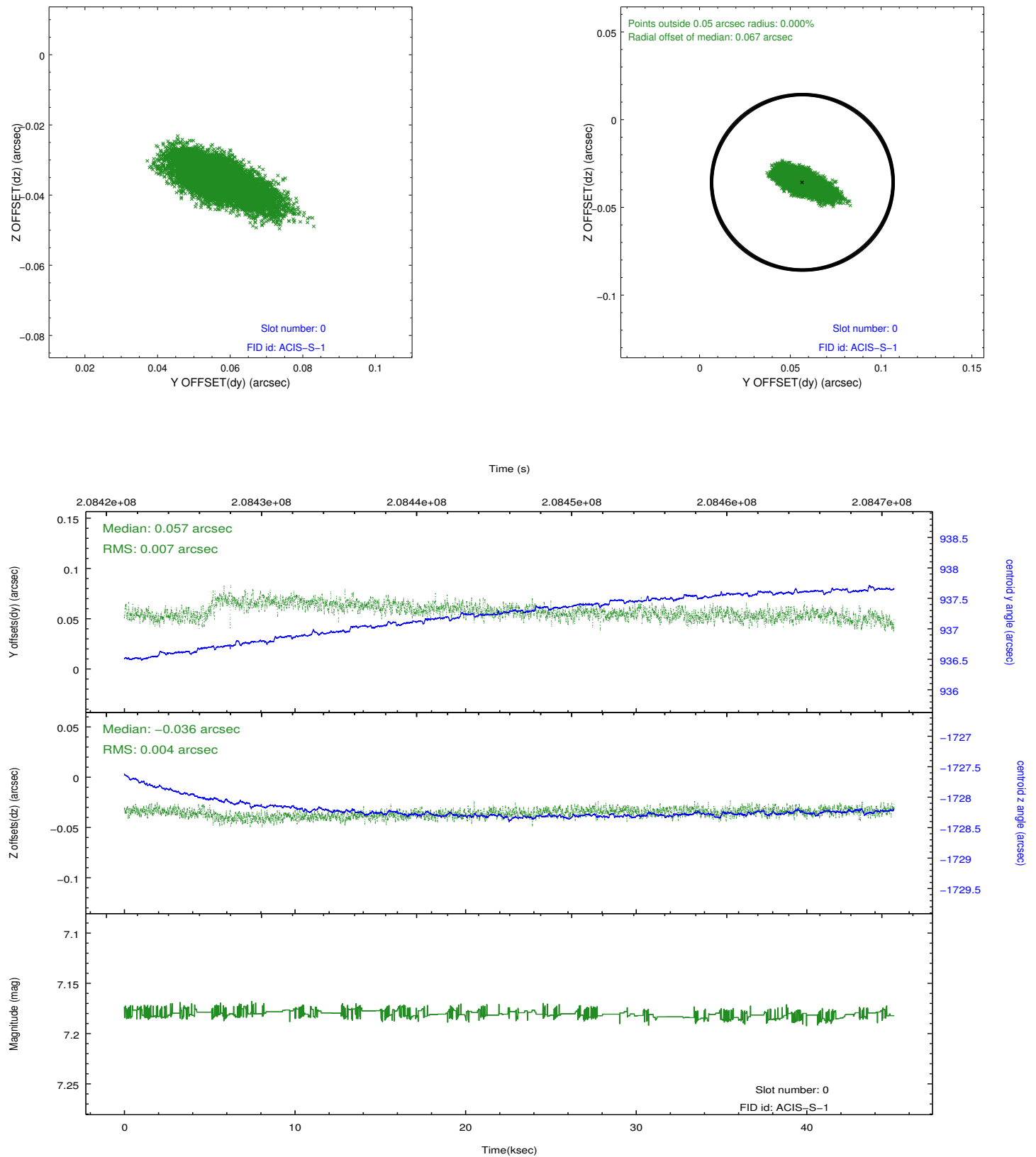


2.4.5 Slot 7

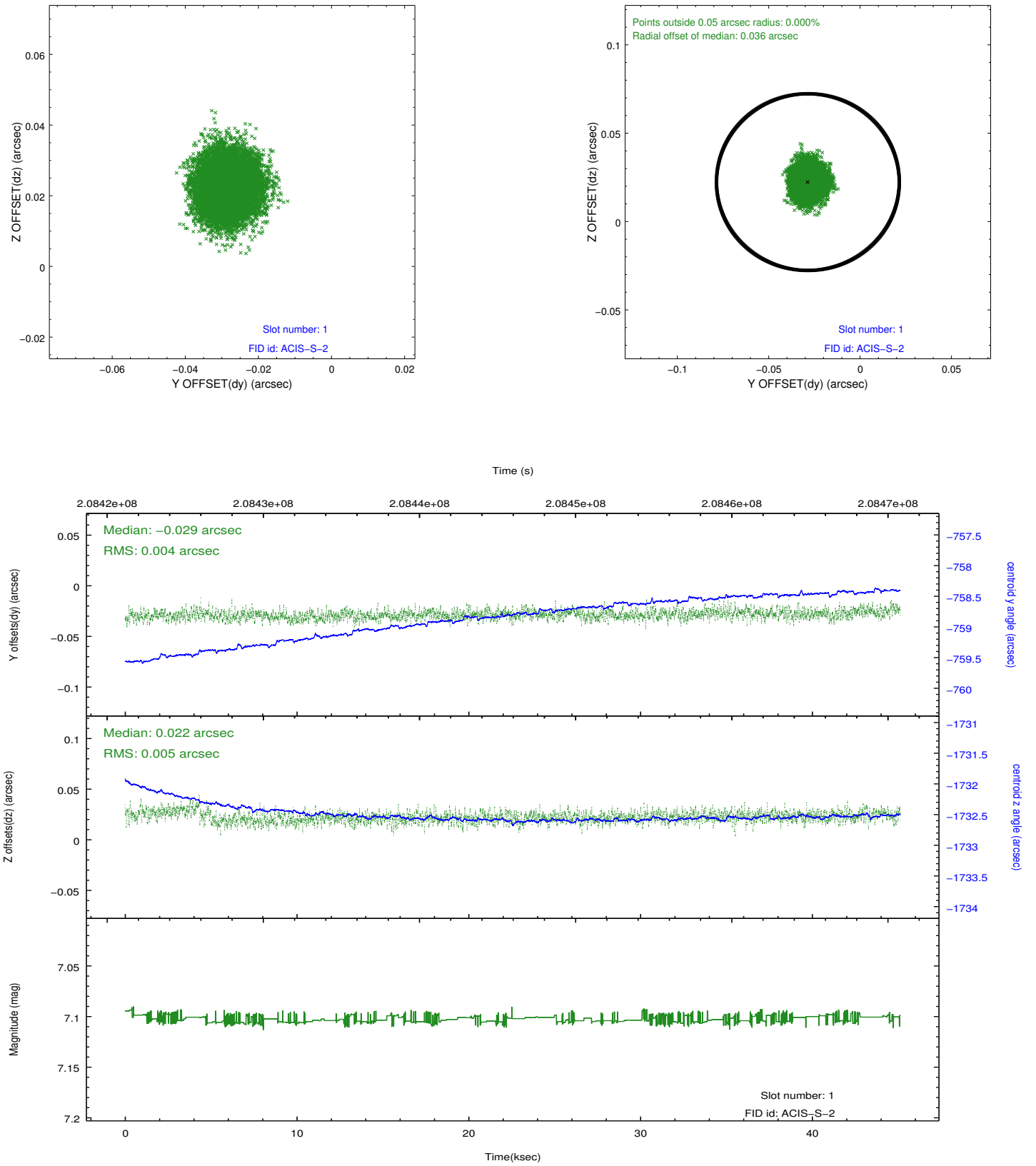


2.5 FID Slots

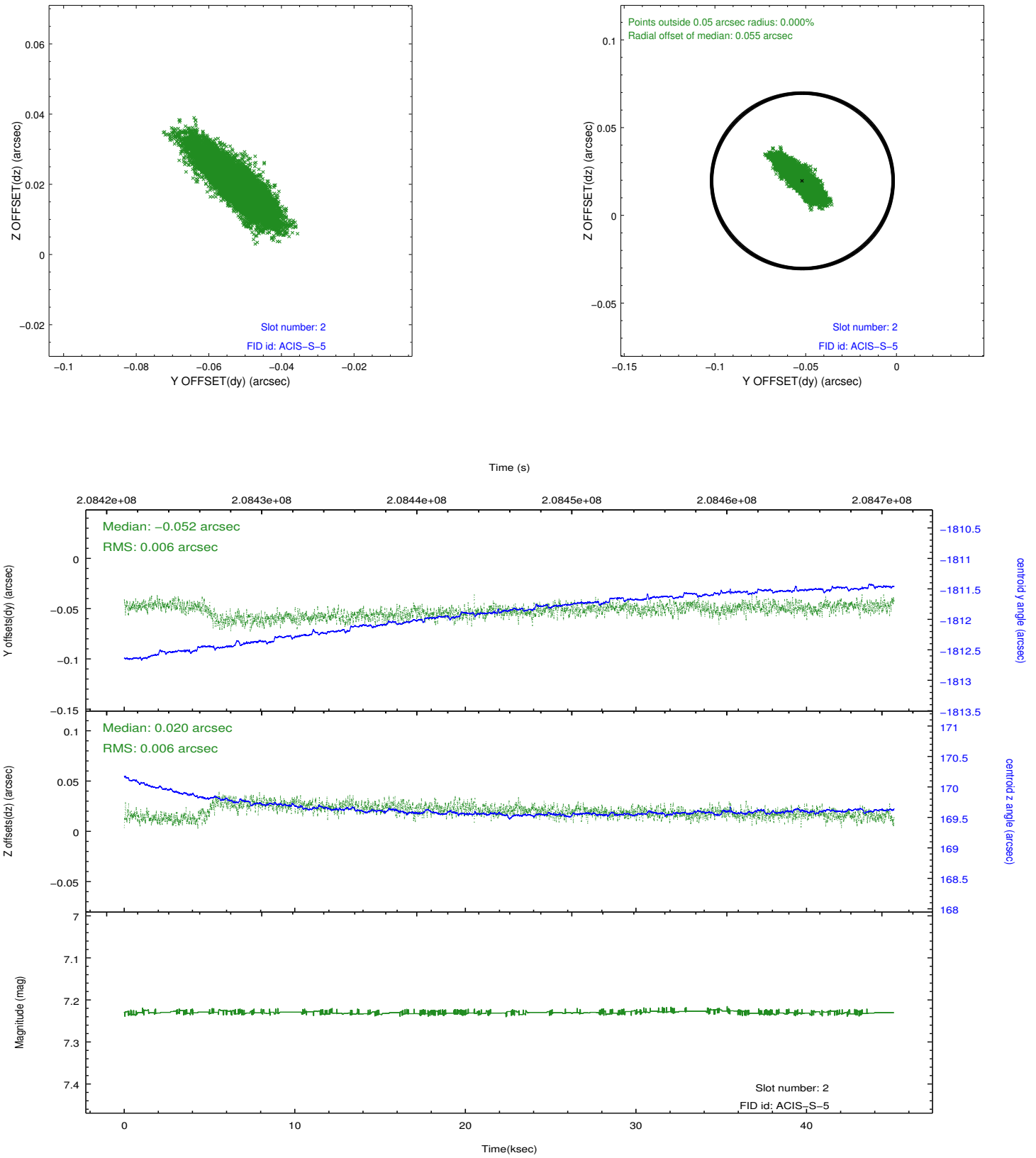
2.5.1 Slot 0



2.5.2 Slot 1



2.5.3 Slot 2



A Summary

A.1 Status

V&V Scientist	Jen Lauer
V&V Date (YYYY-MM-DD)	2012.12.21
V&V Edition	1
V&V Disposition and Status	OK
V&V Charge Time	45.123

A.2 Comments