

V&V Reference Report

L2 ASCDS Version : 8.4.5

Observation 4527 - L2 Version 4
Chandra X-Ray Center

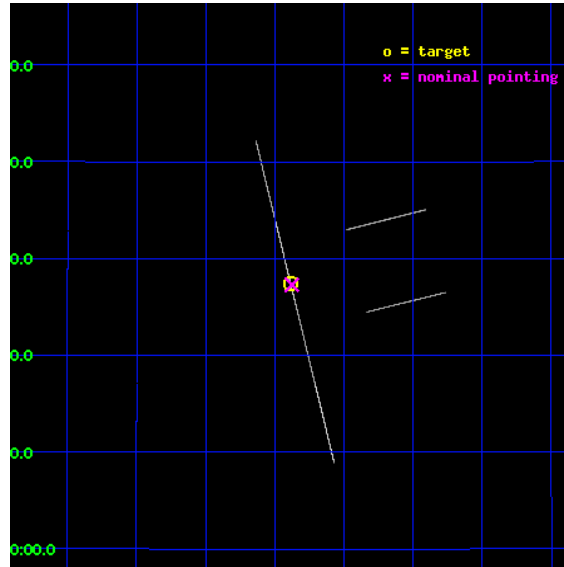
L2 Processing Date : Dec 1 2012

Contents

1	Front	2
2	OBI	3
2.1	OBI	3
2.1.1	Images	3
2.1.2	Parameters	4
2.1.3	Events	4
2.2	Compared Parameters	5
2.3	Aspect	6
2.4	Star Slots	9
2.4.1	Slot 3	9
2.4.2	Slot 4	10
2.4.3	Slot 5	11
2.4.4	Slot 6	12
2.4.5	Slot 7	13
2.5	FID Slots	14
2.5.1	Slot 0	14
2.5.2	Slot 1	15
2.5.3	Slot 2	16
A	Summary	17
A.1	Status	17
A.2	Comments	17

1 Front

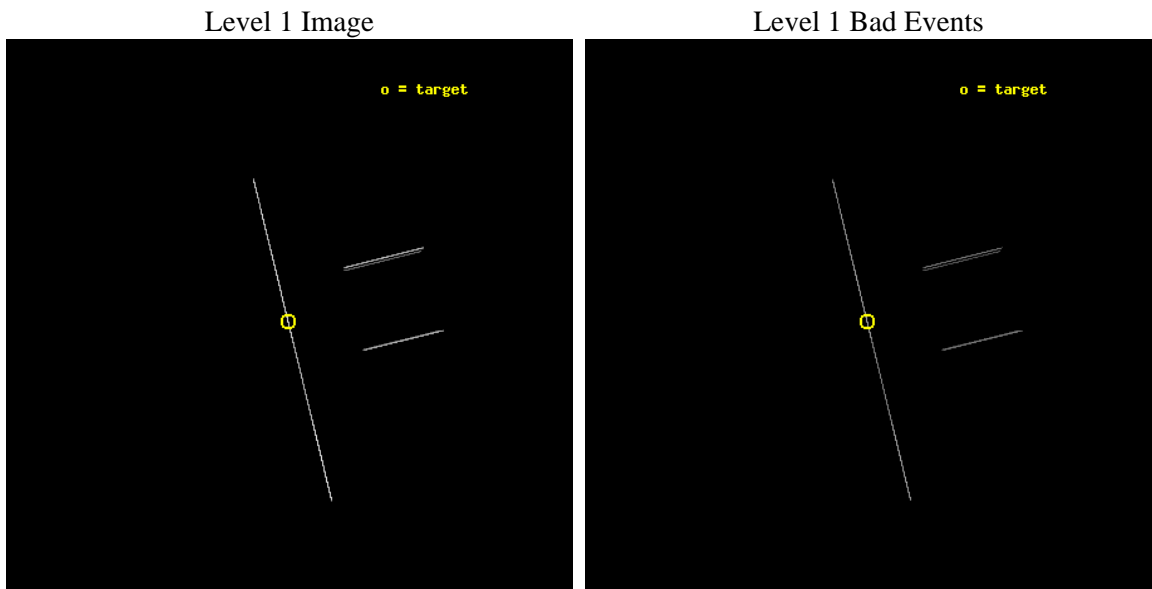
seq_num	300121	Sequence number
obs_id	4527	Observation id
title	Timing the Orbit of RX J0806.3+1527	Proposal title
observer	Dr. Tod Strohmayer	Principal investigator
object	RX J0806.3+1527	Source name
ra_targ	121.596667	Observer's specified target RA [deg]
dec_targ	15.458389	Observer's specified target Dec [deg]
ra_nom	121.59398689804	Nominal RA [deg]
dec_nom	15.454912323278	Nominal Dec [deg]
roll_nom	256.1249488286	Nominal Roll [deg]
revision	4	Processing version of data
ontime	10231.75	Sum of GTIs [s]
livetime	10191.782226562	Livetime [s]
ontime2	10231.75	Sum of GTIs [s]
ontime3	10231.75	Sum of GTIs [s]
ontime5	10231.75	Sum of GTIs [s]
ontime6	10231.75	Sum of GTIs [s]
ontime7	10231.75	Sum of GTIs [s]
ontime8	10231.75	Sum of GTIs [s]
l2events	135045	Number of level 2 events



2 OBI

2.1 OBI

2.1.1 Images



2.1.2 Parameters

obi_num	0	Obi number	sched_exp_time	10000.000000	[s] Scheduled observation exposure time
ascdsver	8.4.5	Processing system revision	ontime	10231.75	Sum of GTIs [s]
caldsver	4.5.2	 	ontime2	10231.75	Sum of GTIs [s]
date	2012-12-01T07:24:19	Date and time of file creation	ontime3	10231.75	Sum of GTIs [s]
revision	4	Processing version of data	ontime5	10231.75	Sum of GTIs [s]
			ontime6	10231.75	Sum of GTIs [s]
			ontime7	10231.75	Sum of GTIs [s]
			ontime8	10231.75	Sum of GTIs [s]
			l1events	199671	Number of level 1 events

2.1.3 Events

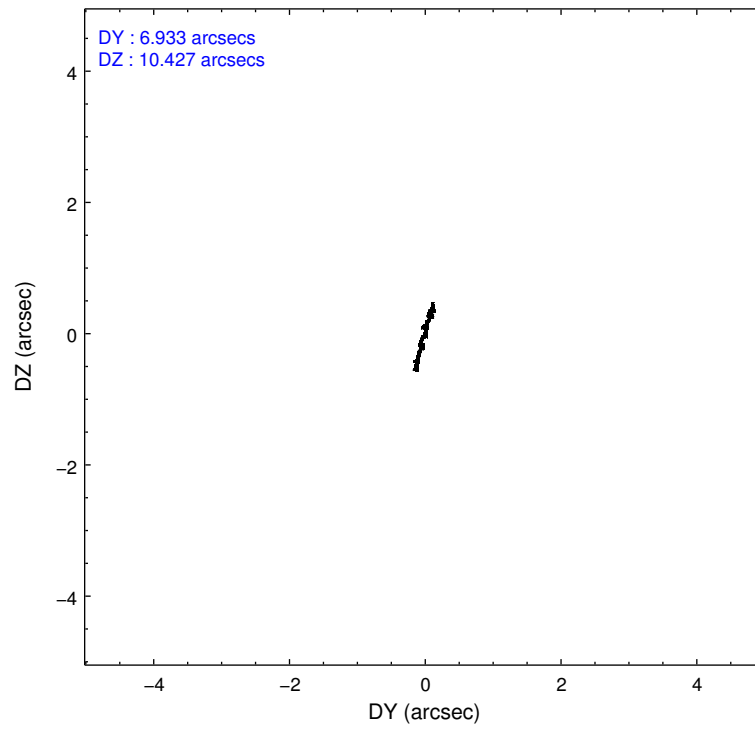
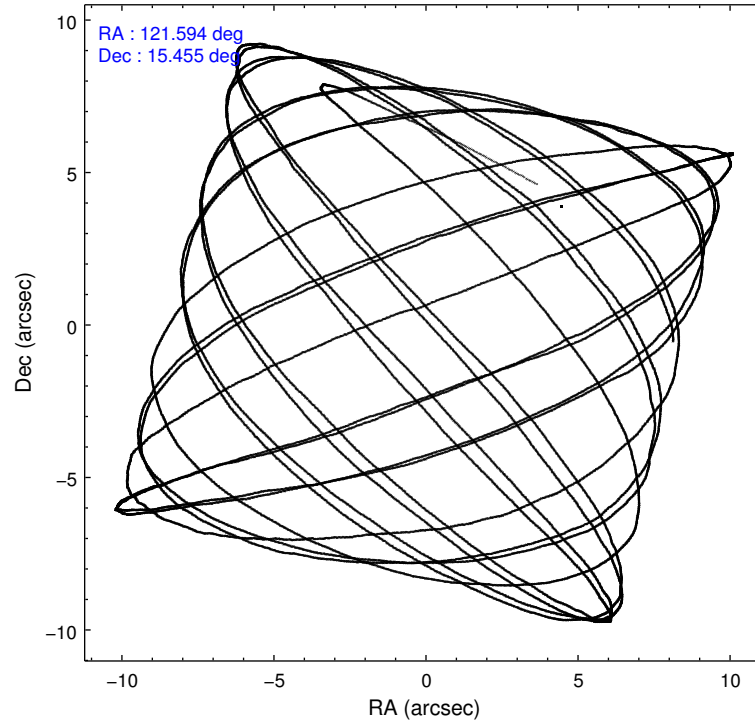
	ccd 2	ccd 3	ccd 5	ccd 6	ccd 7	ccd 8
level 1 events	15155	16514	63799	16735	53448	34020
rejected events	3613	3926	10675	4178	10514	6411
rejected %	23%	23%	16%	24%	19%	18%

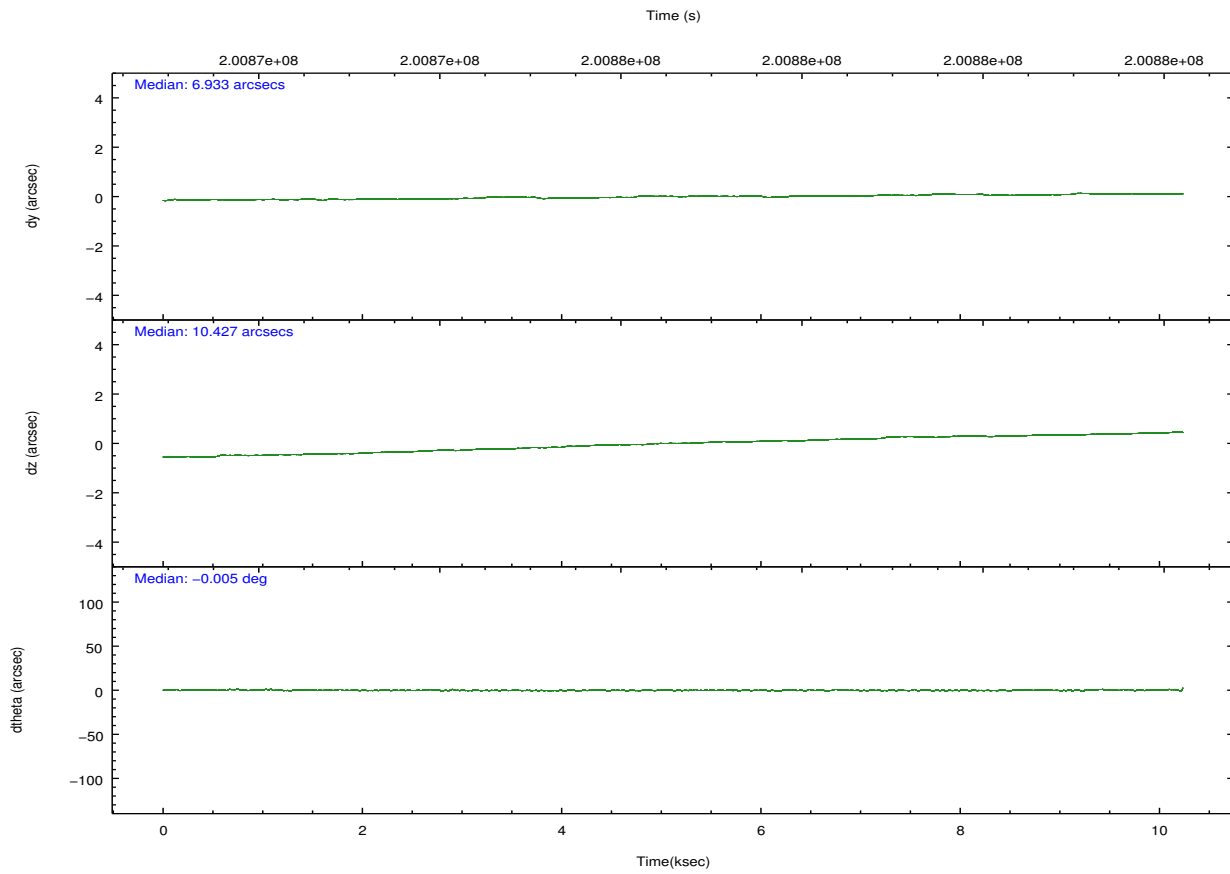
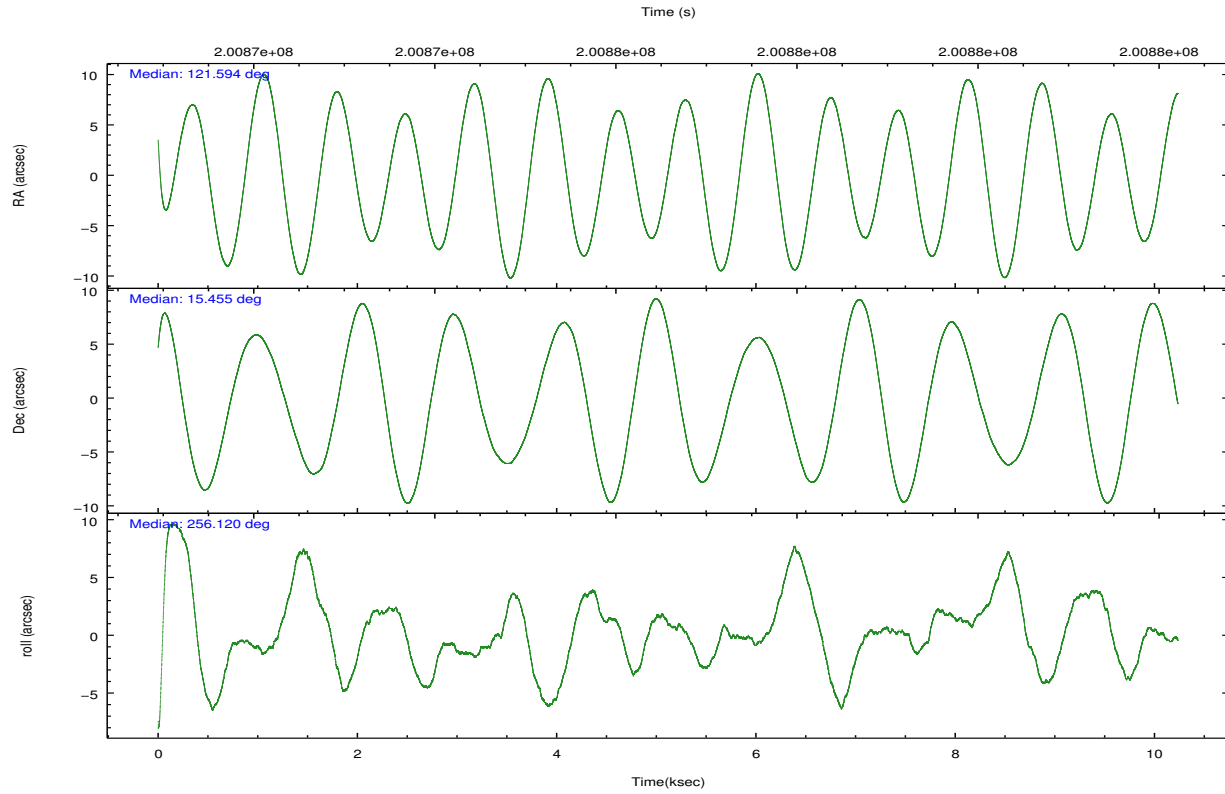
	ccd 2	ccd 3	ccd 5	ccd 6	ccd 7	ccd 8
grade 0 events	1542	1539	3953	1521	4048	5607
	10%	9%	6%	9%	7%	16%
grade 1 events	56	53	82	62	68	92
	0%	0%	0%	0%	0%	0%
grade 2 events	4736	5143	17255	5106	11935	9236
	31%	31%	27%	30%	22%	27%
grade 3 events	1579	1905	1191	1711	1772	3464
	10%	11%	1%	10%	3%	10%
grade 4 events	1562	1651	1167	1575	1750	3327
	10%	9%	1%	9%	3%	9%
grade 5 events	2741	2979	6404	3251	7637	4366
	18%	18%	10%	19%	14%	12%
grade 6 events	2939	3244	33747	3509	26238	7928
	19%	19%	52%	20%	49%	23%
grade 7 events	0	0	0	0	0	0
	0%	0%	0%	0%	0%	0%

2.2 Compared Parameters

Parameter	Planned	Actual	Parameter	Planned	Actual
Instrument	ACIS	ACIS	Obspar format version number	7	7
Detector	ACIS-235678	ACIS-235678	Obspar file type	PREDICTED	ACTUAL
Grating	NONE	NONE	Obspar update status	NONE	UPDATED
Data mode	CC33_GRADED	CC33_GRADED	Number of optional ACIS chips dropped	0	0
Observation mode	POINTING	POINTING	On-chip summing requested	N	N
[deg] Pointing RA	121.585760	121.5939868980439	Subarray requested	NONE	NONE
[deg] Pointing Dec	15.480948	15.45491232327805	Alternating exposures requested	N	N
[deg] Pointing Roll	255.970544	256.1249488285993	[s] Primary exposure time	0.000000	0
[mm] SIM focus pos	-0.684267	-0.6828225247311905			
[mm] SIM defocus	0	0.001444936568705701			
[mm] SIM translation stage pos	-190.132523	-190.1400660498719			
[mm] SIM translation stage offset	0	0.00754346686406393			
[s] Observation start time (MET)	200871693.184000	200870704.95513			
Observation start date	2004-05-13T21:40:29	2004-05-13T21:25:04			
[s] Observation end time (MET)	200881693.184000	200882687.20566			
Observation end date	2004-05-14T00:27:09	2004-05-14T00:44:47			
Read mode	CONTINUOUS	CONTINUOUS			

2.3 Aspect



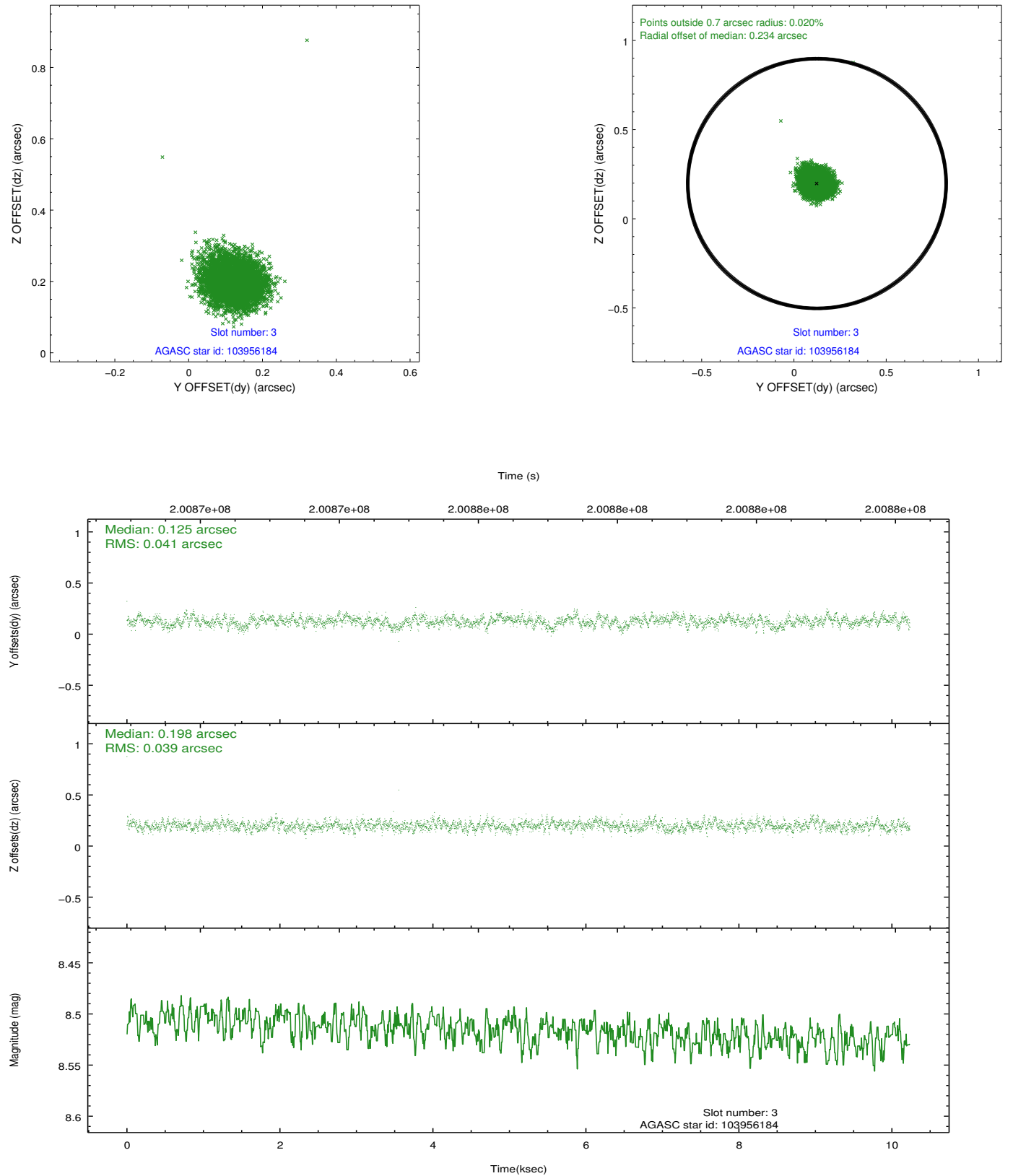


Slot Statistics

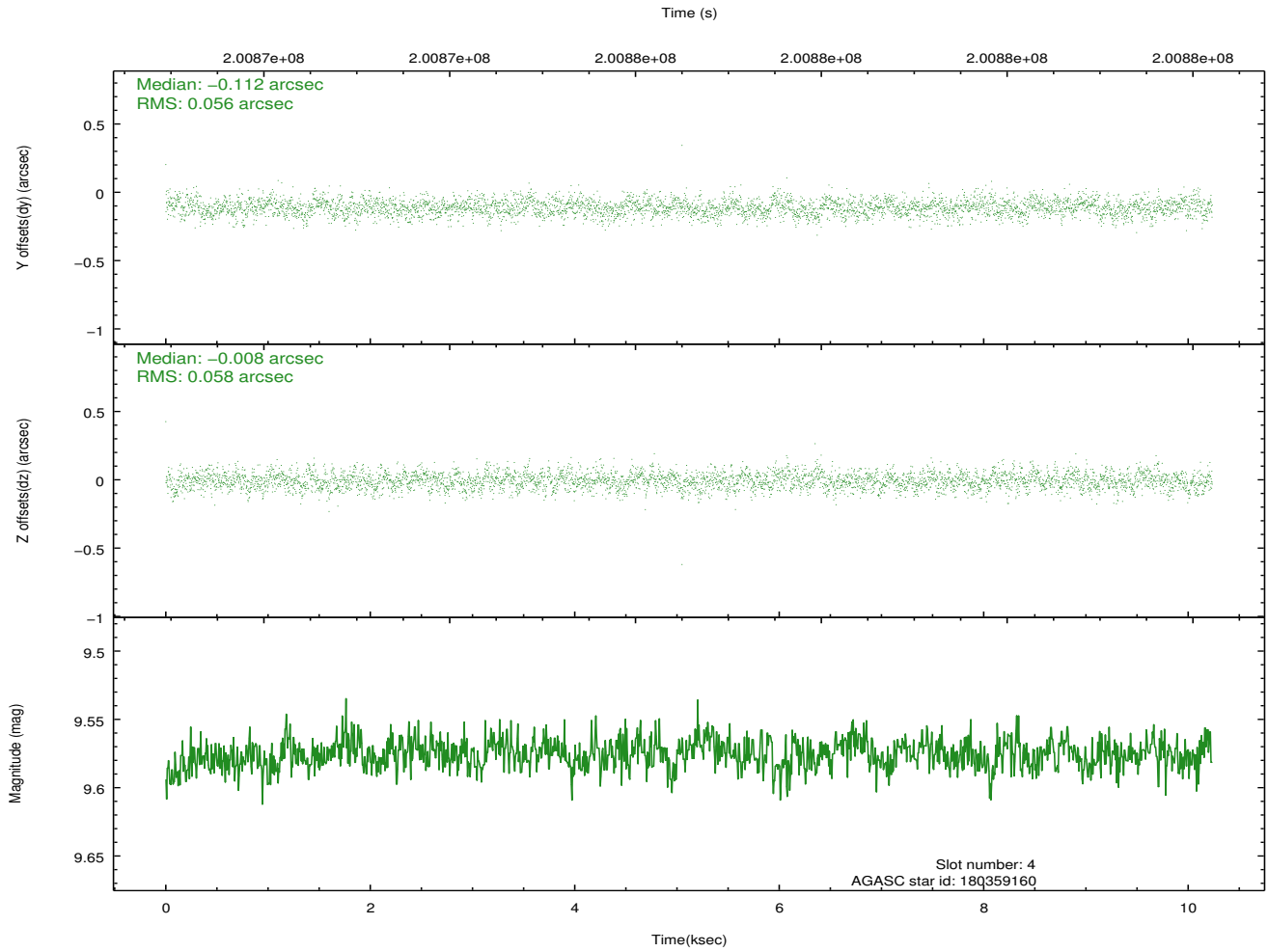
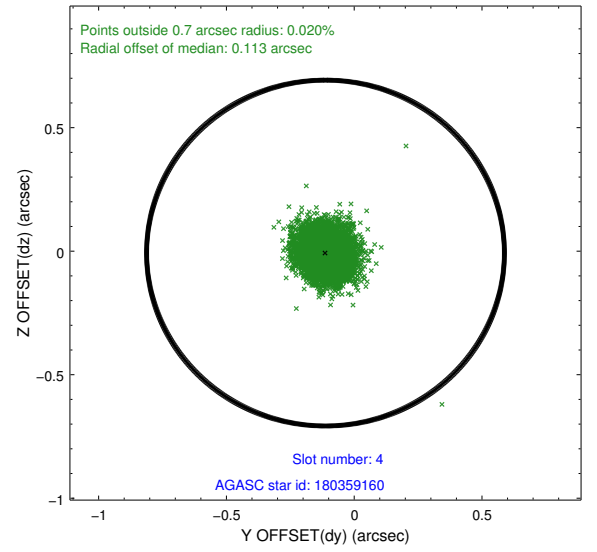
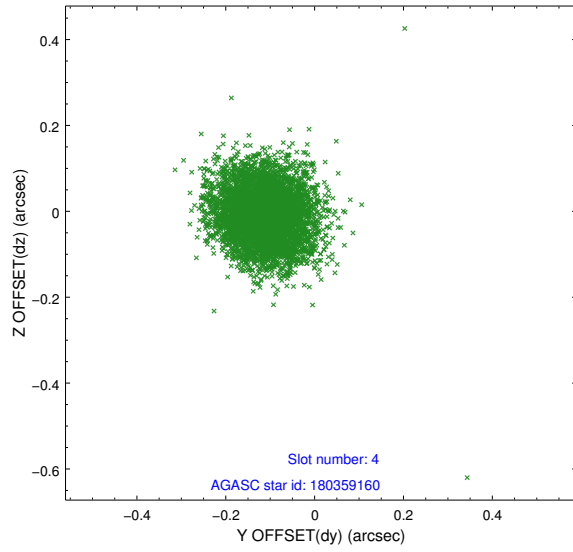
slot	status	id	mag	n_pts	med_dy	med_dz	dr1	dr2	ra	dec	mean_y	mean_z
0	FID	ACIS-S-2	7.10	2497	-0.051	-0.009	0.007	0.012	0.000000	0.000000	-759.68	-1731.67
1	FID	ACIS-S-4	7.20	2497	0.068	0.027	0.007	0.012	0.000000	0.000000	2153.44	176.37
2	FID	ACIS-S-5	7.23	2496	-0.049	-0.009	0.007	0.012	0.000000	0.000000	-1811.90	170.51
3	GUIDE	103956184	8.52	4994	0.125	0.198	0.060	0.095	122.093586	14.853591	1761.28	2262.01
4	GUIDE	180359160	9.58	4985	-0.112	-0.008	0.084	0.138	121.837257	16.020694	-2095.91	373.66
5	GUIDE	180367416	9.13	4985	-0.042	-0.106	0.090	0.139	120.920648	15.525818	399.33	-2277.95
6	GUIDE	180370112	8.39	4991	0.037	-0.146	0.079	0.117	121.144488	15.364256	779.32	-1385.38
7	GUIDE	180372496	7.92	4993	-0.009	0.063	0.047	0.075	121.745221	15.155380	1003.20	821.91

2.4 Star Slots

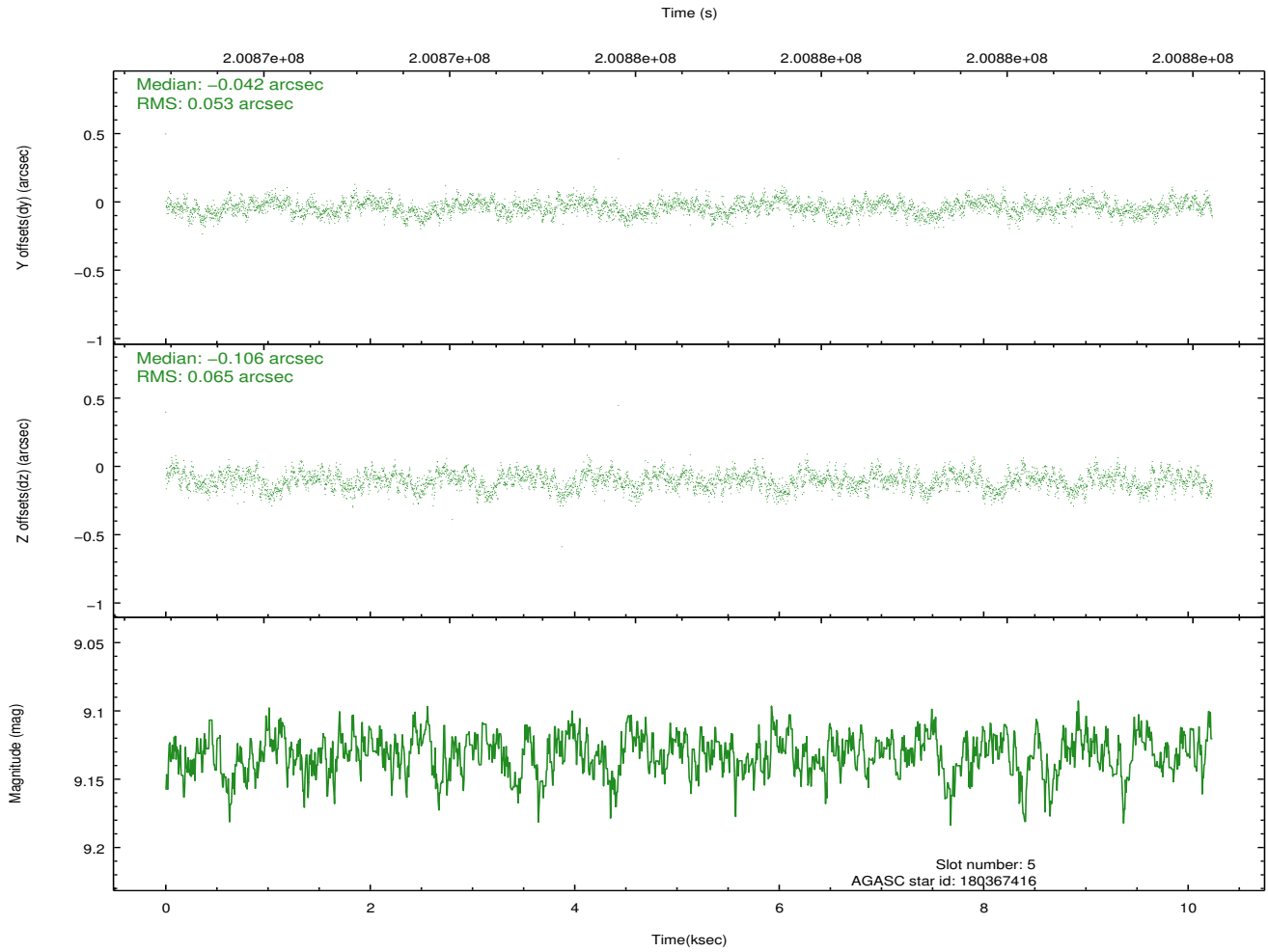
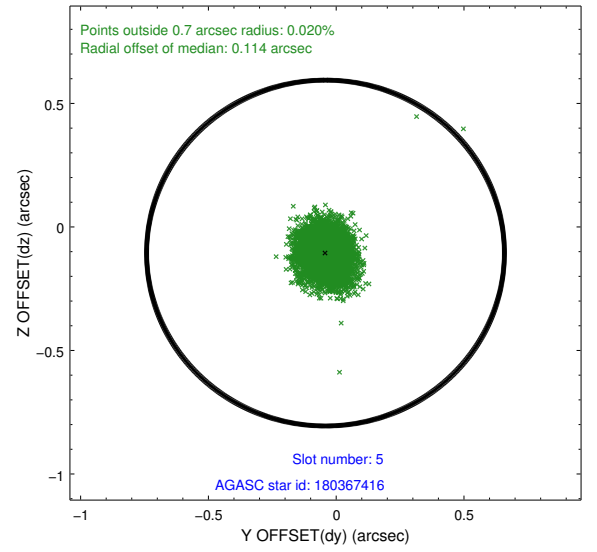
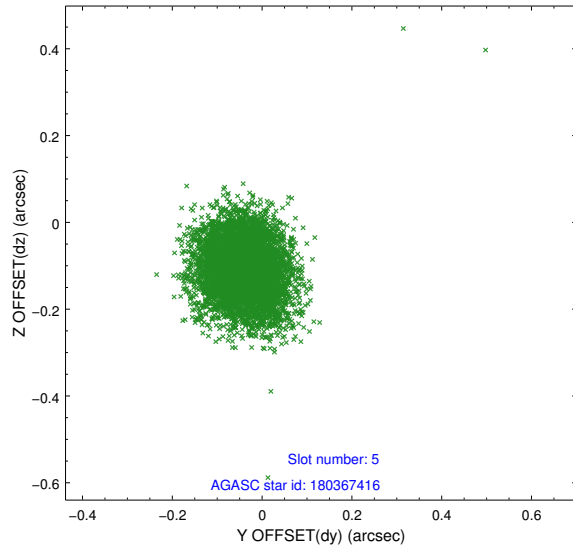
2.4.1 Slot 3



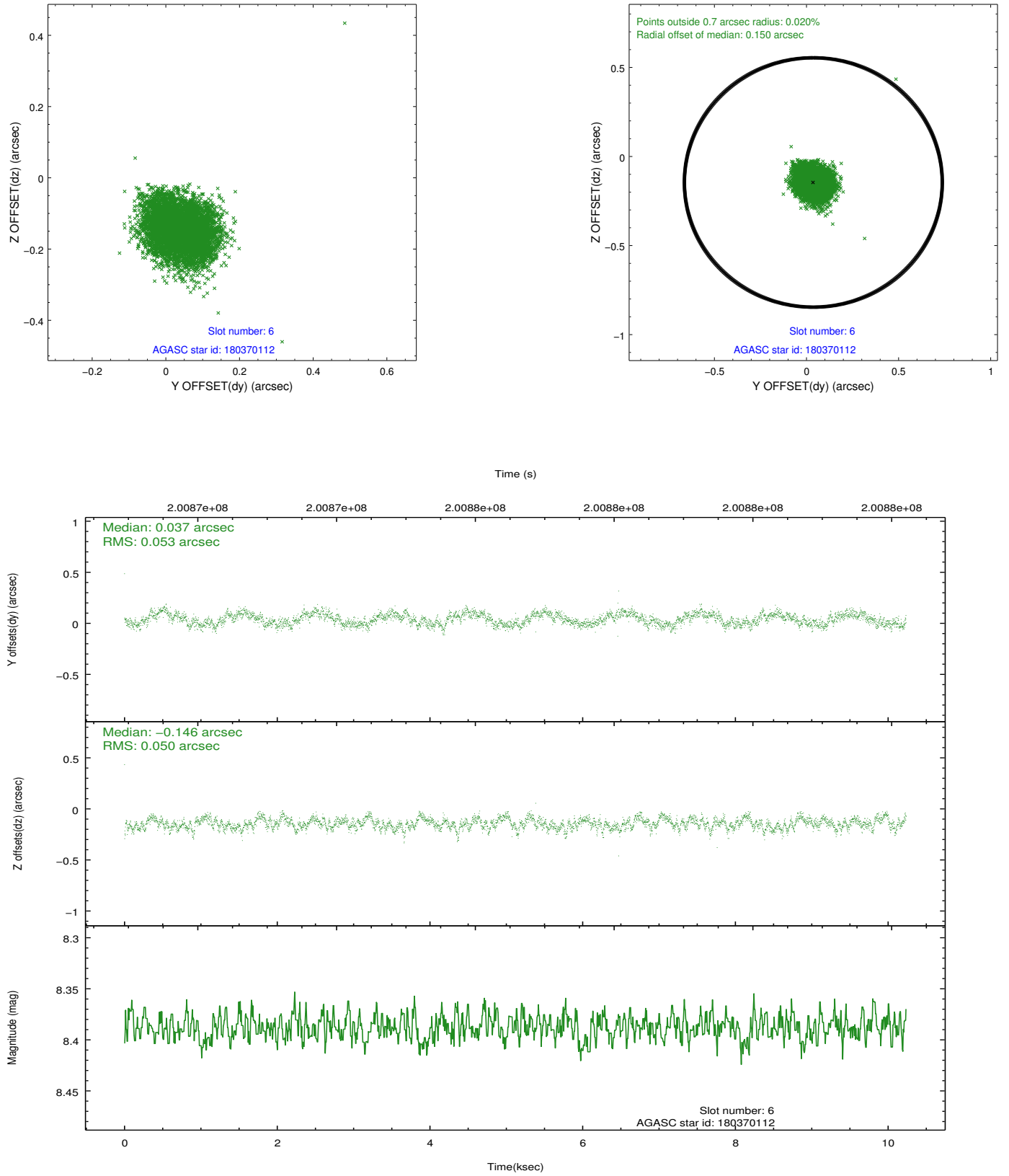
2.4.2 Slot 4



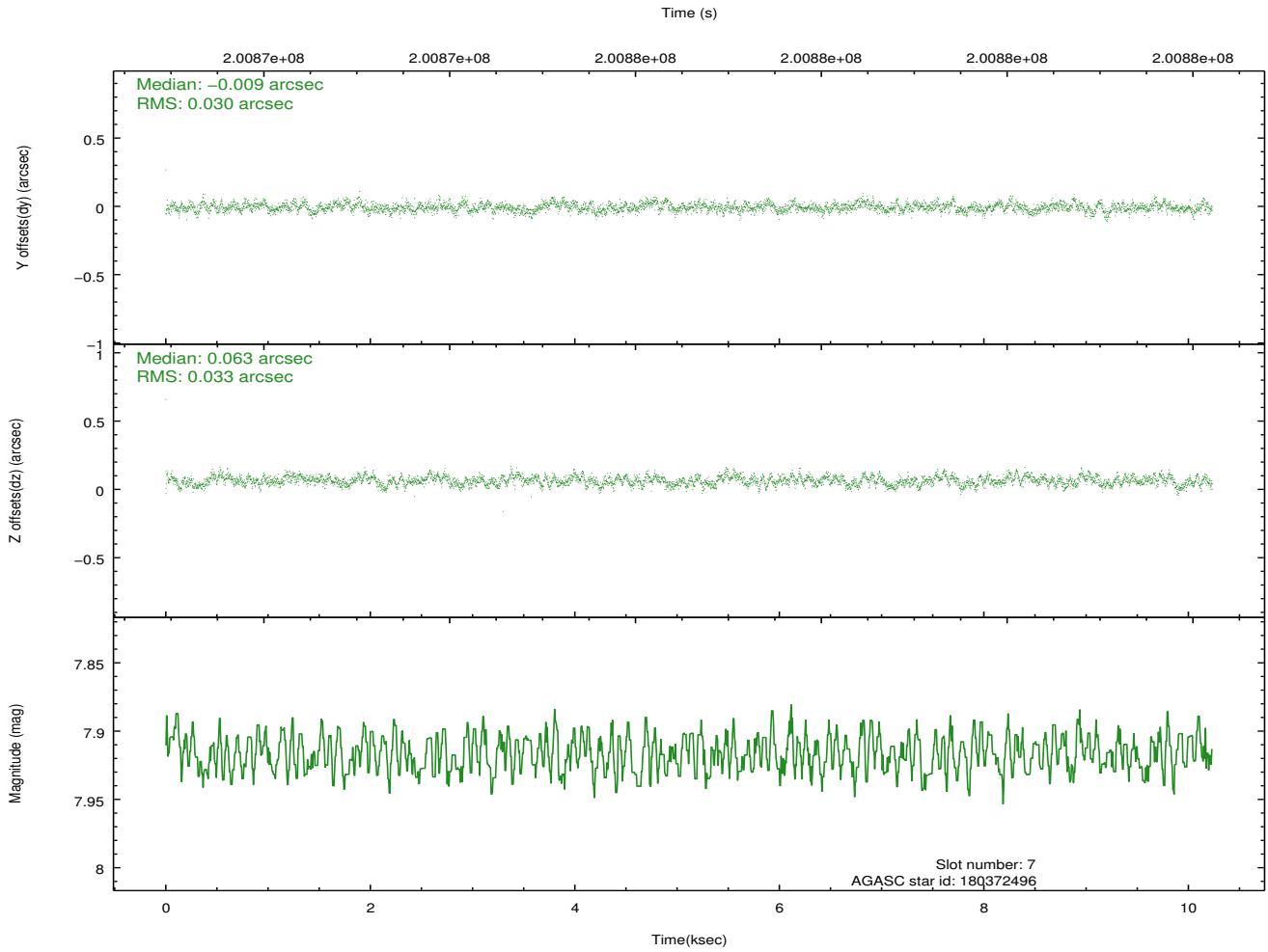
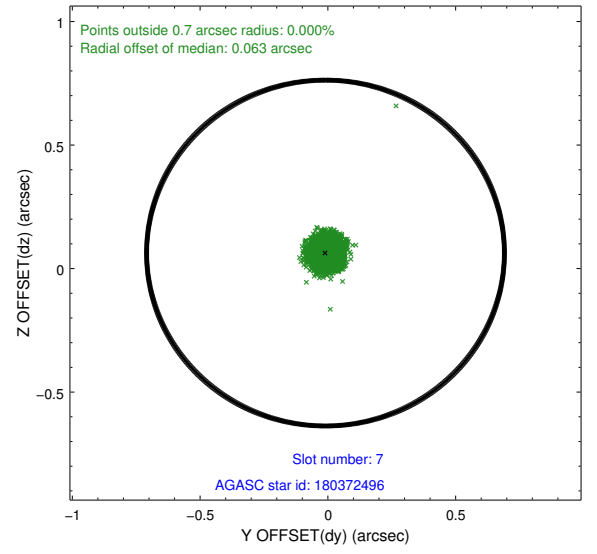
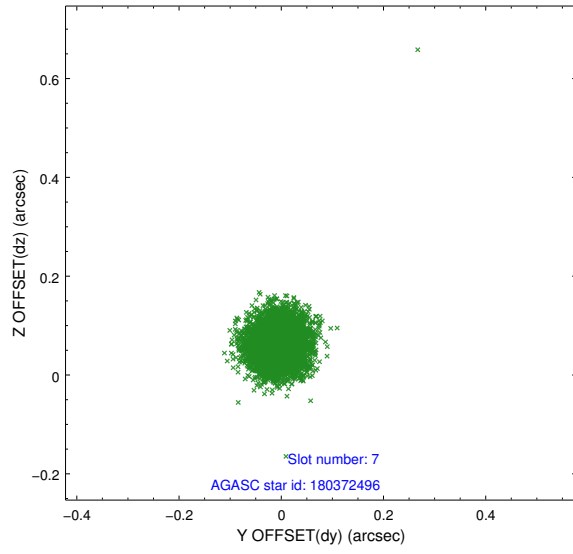
2.4.3 Slot 5



2.4.4 Slot 6

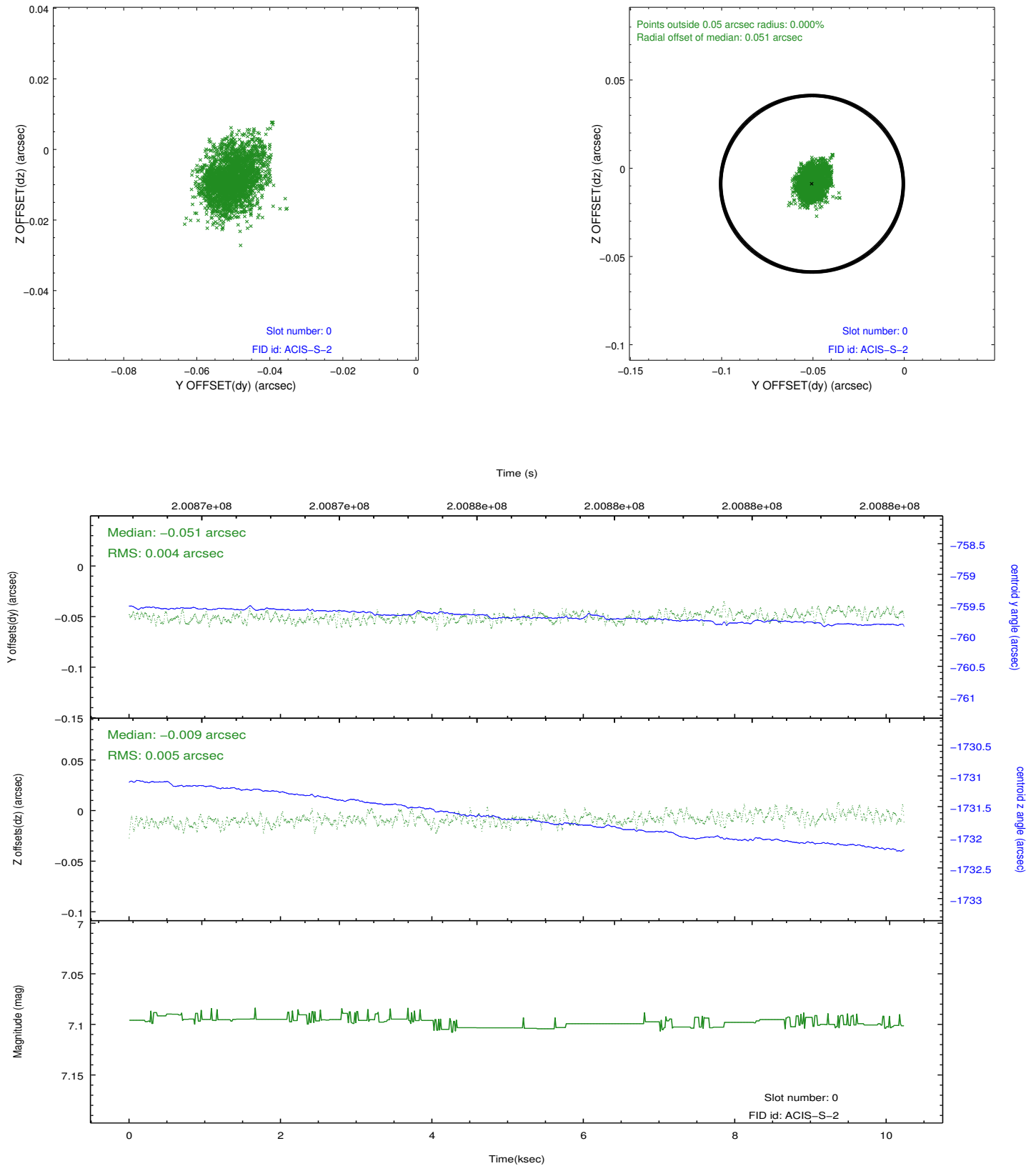


2.4.5 Slot 7

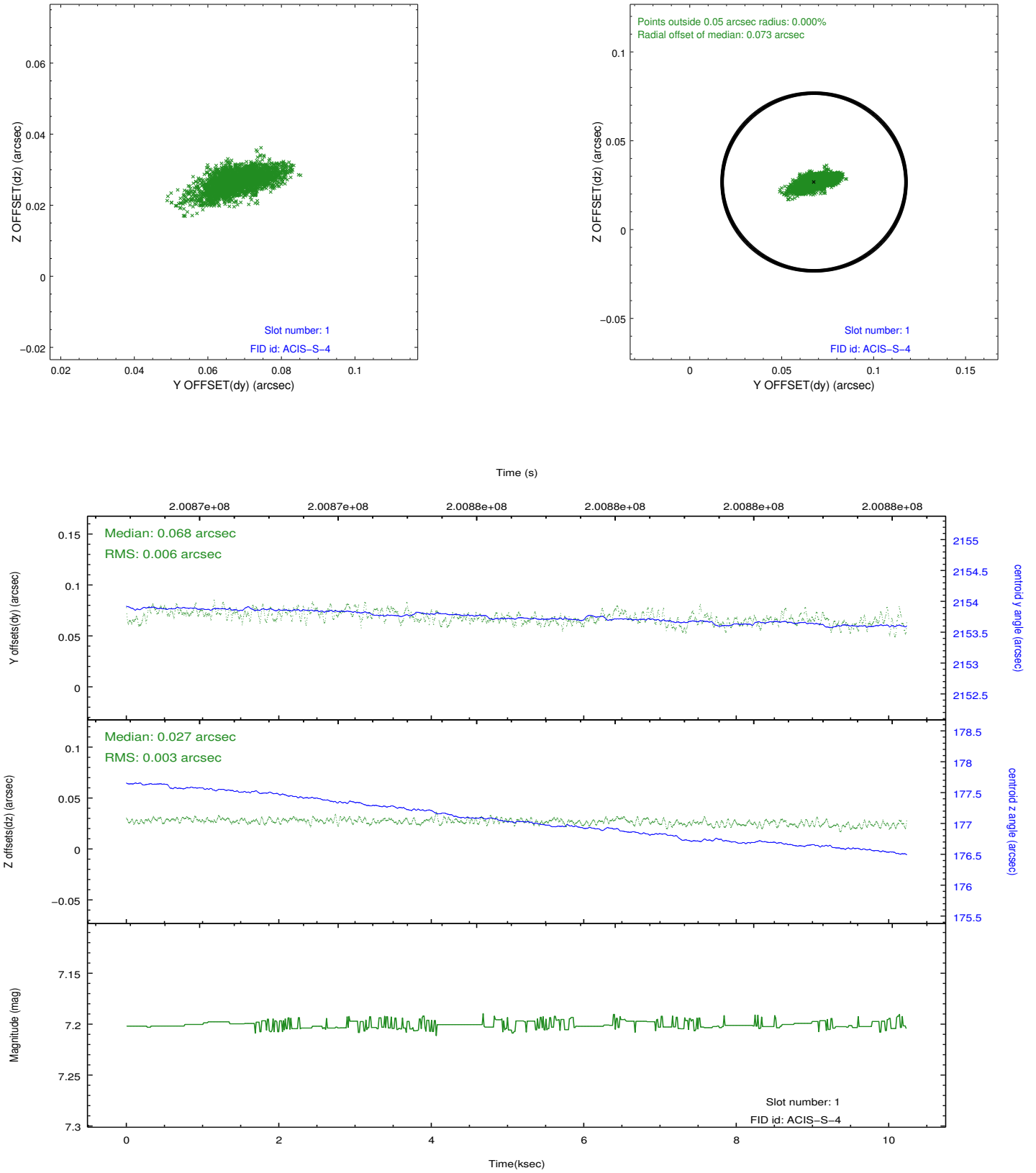


2.5 FID Slots

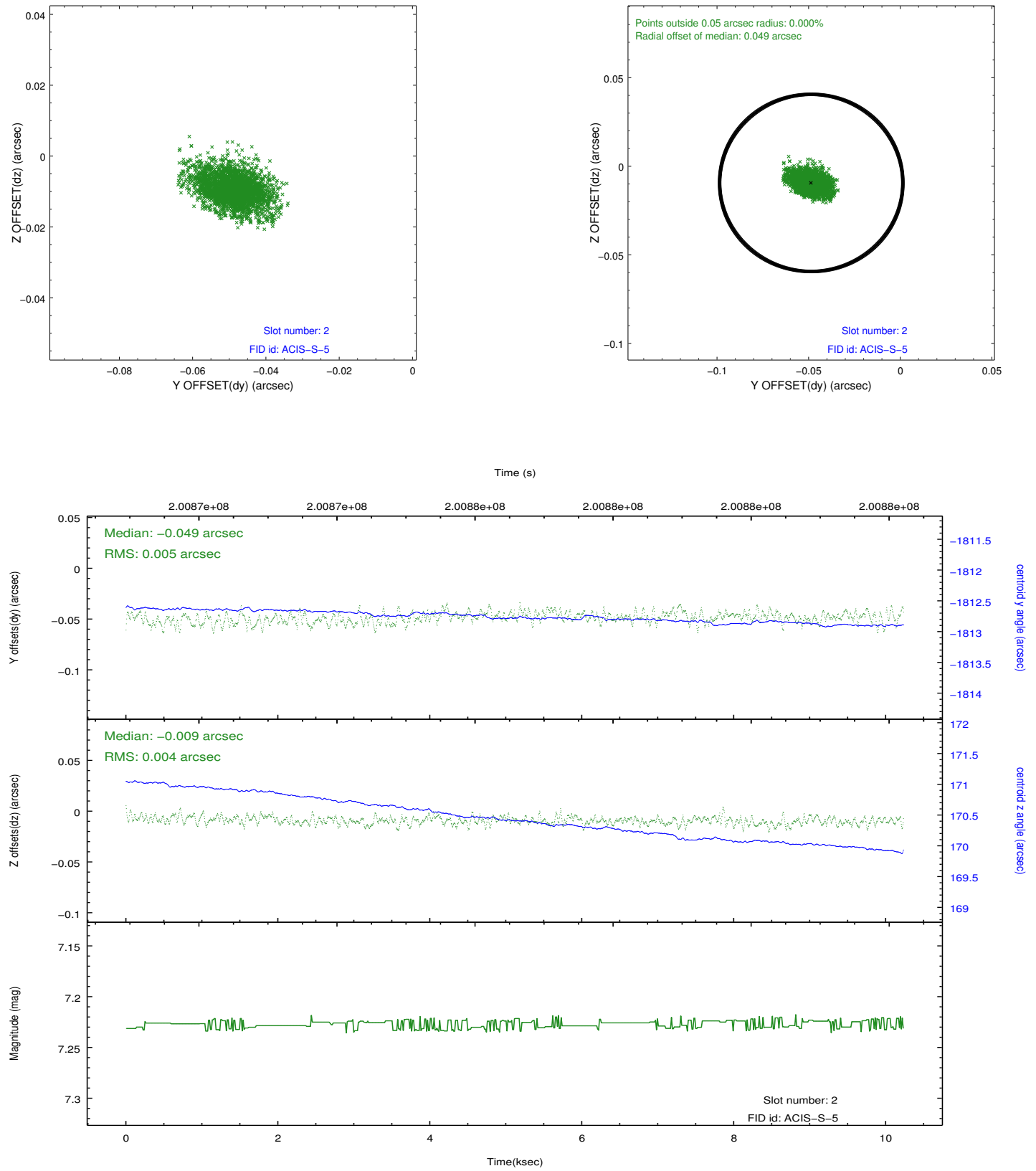
2.5.1 Slot 0



2.5.2 Slot 1



2.5.3 Slot 2



A Summary

A.1 Status

V&V Scientist	Joy Nichols
V&V Date (YYYY-MM-DD)	2012.12.27
V&V Edition	1
V&V Disposition and Status	OK
V&V Charge Time	10.234

A.2 Comments