

# V&V Reference Report

## L2 ASCDS Version : 7.6.8

Observation 4177 - L2 Version 001  
Chandra X-Ray Center

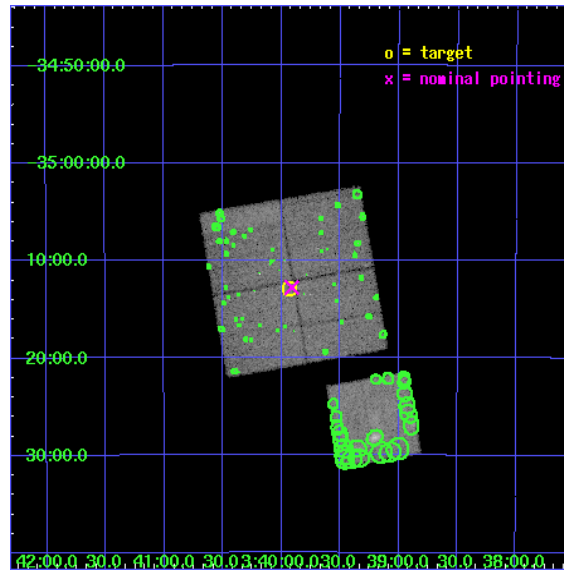
L2 Processing Date : Aug 3 2006

## Contents

<b>1</b>	<b>Front</b>	<b>2</b>
<b>2</b>	<b>OBI</b>	<b>3</b>
2.1	OBI . . . . .	3
2.1.1	Images . . . . .	3
2.1.2	Bias . . . . .	3
2.1.3	Parameters . . . . .	4
2.1.4	Events . . . . .	4
2.2	Compared Parameters . . . . .	5
2.3	Aspect . . . . .	6
2.4	Star Slots . . . . .	9
2.4.1	Slot 3 . . . . .	9
2.4.2	Slot 4 . . . . .	10
2.4.3	Slot 5 . . . . .	11
2.4.4	Slot 6 . . . . .	12
2.4.5	Slot 7 . . . . .	13
2.5	FID Slots . . . . .	14
2.5.1	Slot 0 . . . . .	14
2.5.2	Slot 1 . . . . .	15
2.5.3	Slot 2 . . . . .	16
<b>3</b>	<b>Point Sources</b>	<b>17</b>
<b>A</b>	<b>Summary</b>	<b>18</b>
A.1	Status . . . . .	18
A.2	Comments . . . . .	18

# 1 Front

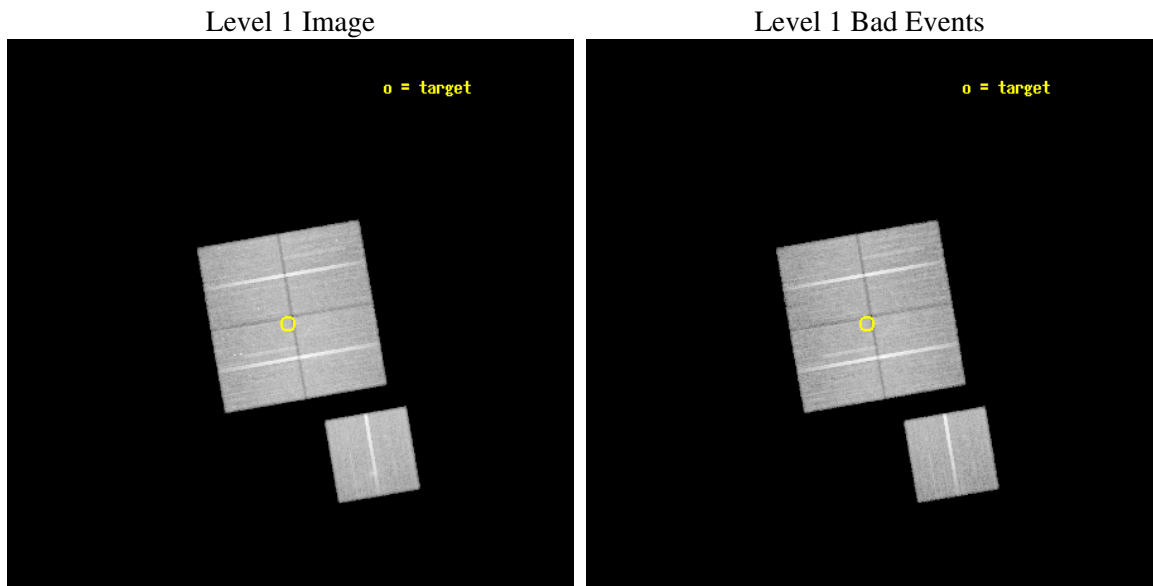
seq_num	800333
obs_id	4177
title	SURVEYING THE FORNAX CLUSTER OF GALAXIES
observer	Dr Caleb Scharf
object	FORNAX CLUSTER
dtcycle	0
cycle	P
ra_targ	54.9825
dec_targ	-35.2156
ra_nom	54.977741025903
dec_nom	-35.213096745682
roll_nom	170.20593946668
revision	2
ontime	47575.57710743
livetime	46953.967167891
ontime0	47578.717948139
ontime1	47572.43603766
ontime2	47584.999908507
ontime3	47575.57710743
ontime6	47578.717968017
l2events	162341



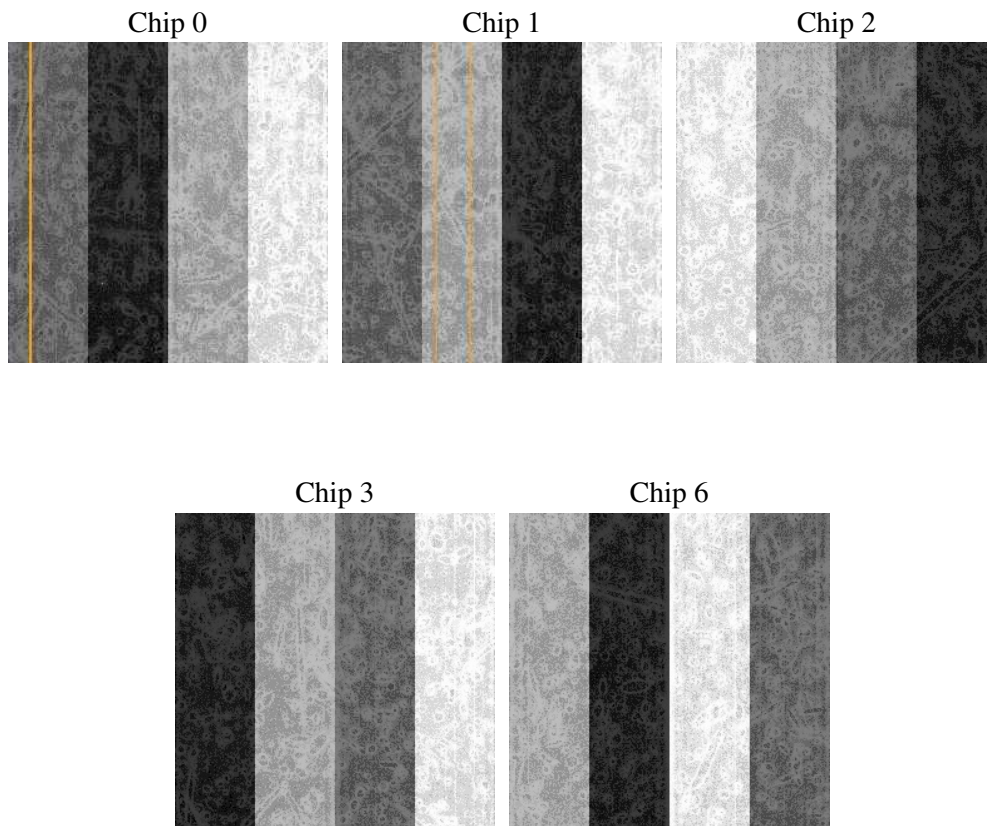
## 2 OBI

### 2.1 OBI

#### 2.1.1 Images



#### 2.1.2 Bias



### 2.1.3 Parameters

obi_num	1
ascdsver	7.6.8
caldsver	3.2.2
date	2006-08-03T07:54:14
revision	2

sched_exp_time	47816.618000
ontime	47583.037957042
ontime0	47586.178827643
ontime1	47579.896887273
ontime2	47592.460788012
ontime3	47583.037957042
ontime6	47586.17881763
l1events	1202324

### 2.1.4 Events

	ccd 0	ccd 1	ccd 2	ccd 3	ccd 6
level 1 events	229297	226783	255722	244184	246338
rejected events	194467	190654	217649	210166	201950
rejected %	84%	84%	85%	86%	81%

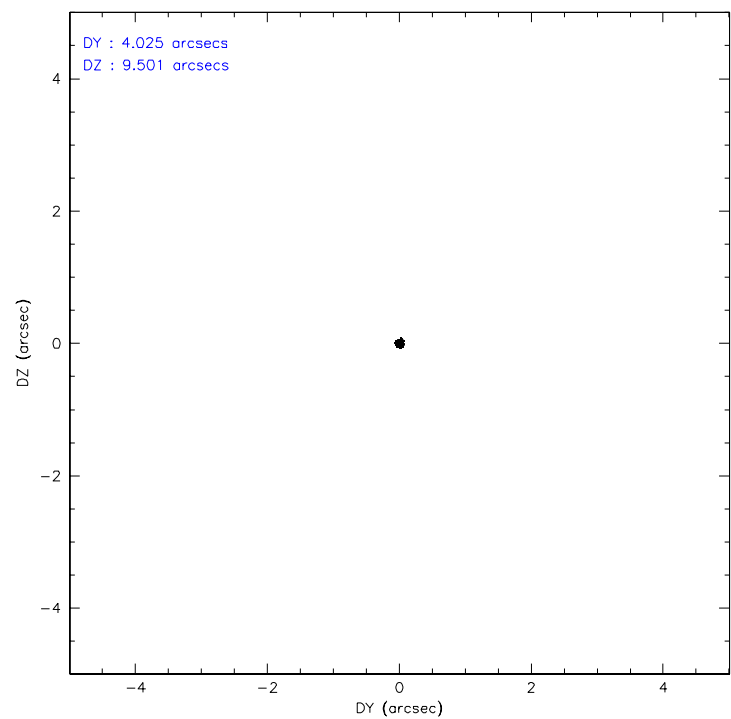
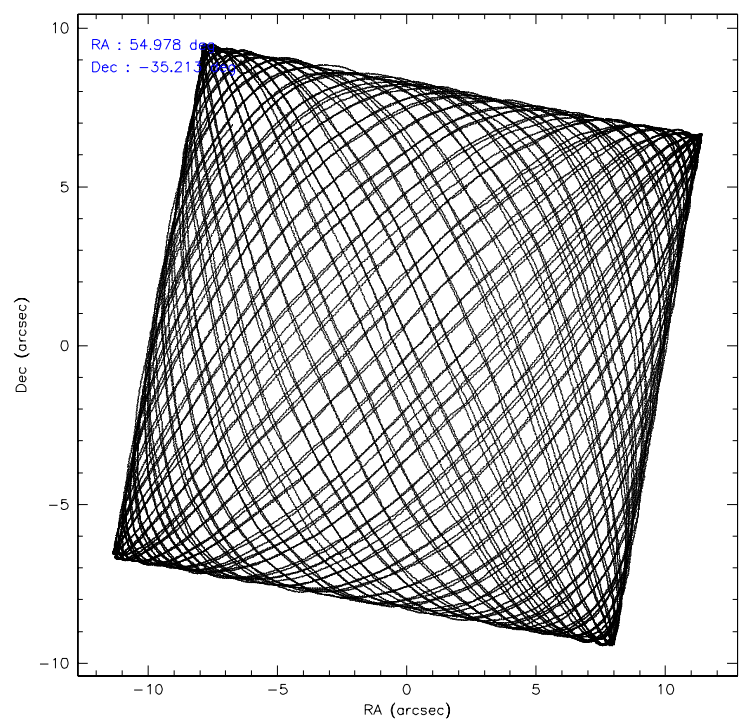
	ccd 0	ccd 1	ccd 2	ccd 3	ccd 6
grade 0 events	18071	18297	21286	18302	25654
	7%	8%	8%	7%	10%
grade 1 events	137	125	156	143	152
	0%	0%	0%	0%	0%
grade 2 events	6535	6378	6502	5702	6883
	2%	2%	2%	2%	2%
grade 3 events	2971	3136	2870	2740	3172
	1%	1%	1%	1%	1%
grade 4 events	2708	3130	2971	2748	3156
	1%	1%	1%	1%	1%
grade 5 events	7758	8346	7477	8839	8676
	3%	3%	2%	3%	3%
grade 6 events	4549	5193	4448	4533	5530
	1%	2%	1%	1%	2%
grade 7 events	186568	182178	210012	201177	193115
	81%	80%	82%	82%	78%

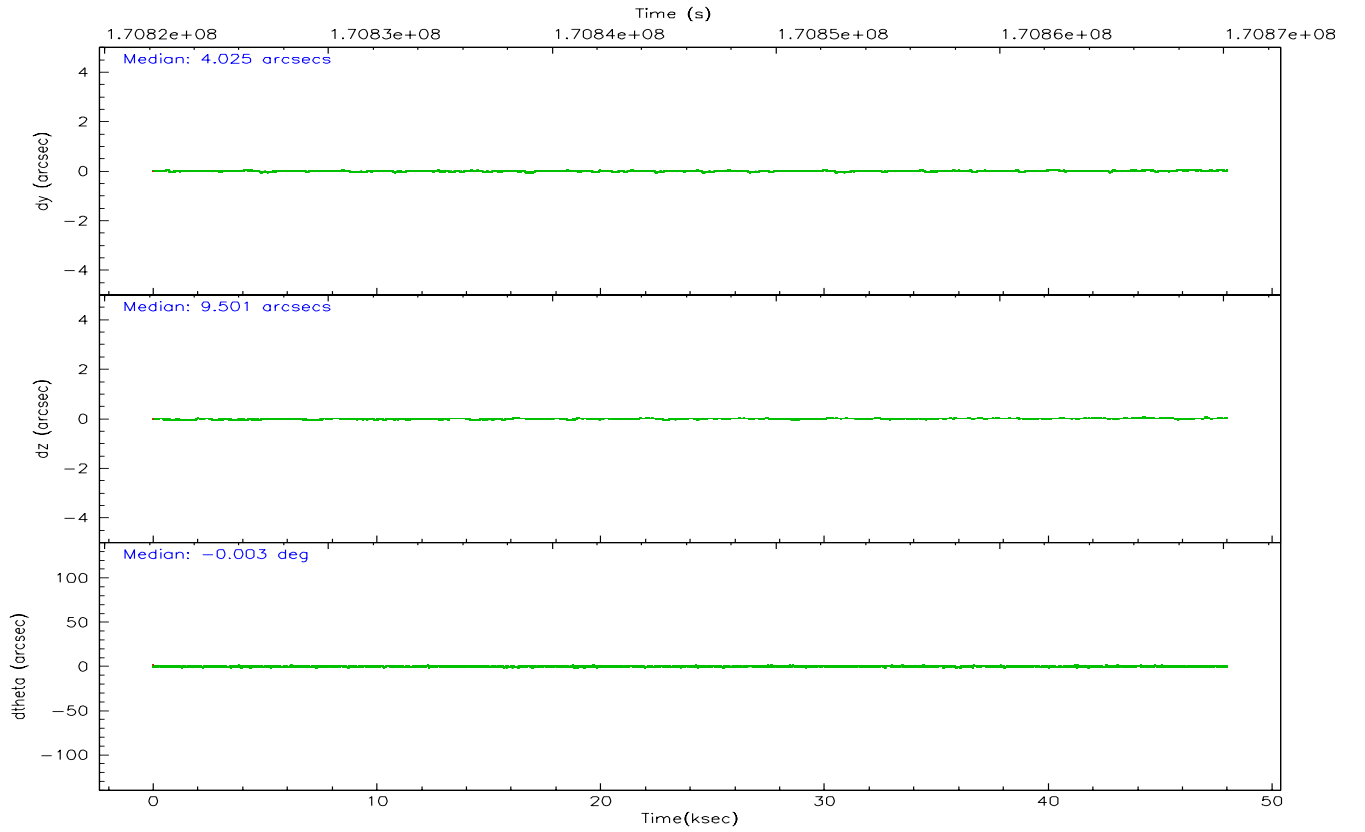
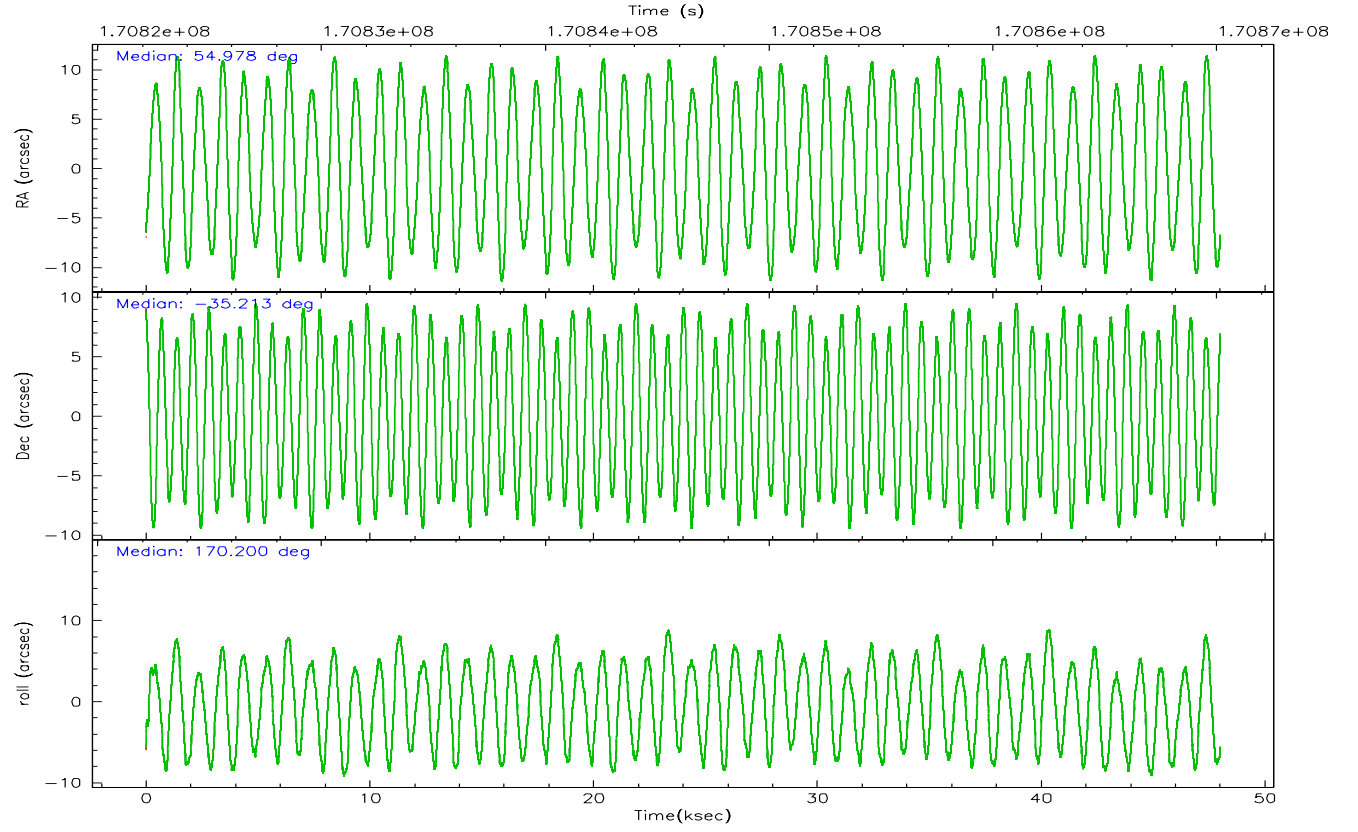


## 2.2 Compared Parameters

Parameter	Planned	Actual	Parameter	Planned	Actual
Instrument	ACIS	ACIS	Obspar format version number	6	6
Detector	ACIS-01236	ACIS-01236	Obspar file type	PREDICTED	ACTUAL
Grating	NONE	NONE	Obspar update status	NONE	UPDATED
Data mode	VFAINT	VFAINT	On-chip summing requested	N	N
Observation mode	POINTING	POINTING	Subarray requested	NONE	NONE
Pointing RA	55.009129	54.97774102590278	Alternating exposures requested	N	N
Pointing Dec	-35.203518	-35.21309674568236	Primary exposure time	0.000000	3.1
Pointing Roll	170.015353	170.2059394666784			
SIM focus pos (mm)	-0.782348	-0.7809083437167272			
SIM defocus (mm)	0	0.001439871863259334			
SIM translation stage pos (mm)	-233.592463	-233.5874344608287			
SIM translation stage offset (mm)	0	-0.005018542100998502			
Observation start time	170822344.184000	170821967.65466			
Observation start date	2003-06-01T02:38:00	2003-06-01T02:32:47			
Observation end time	170870160.184000	170870474.75671			
Observation end date	2003-06-01T15:54:56	2003-06-01T16:01:14			
Read mode	TIMED	TIMED			

### 2.3 Aspect



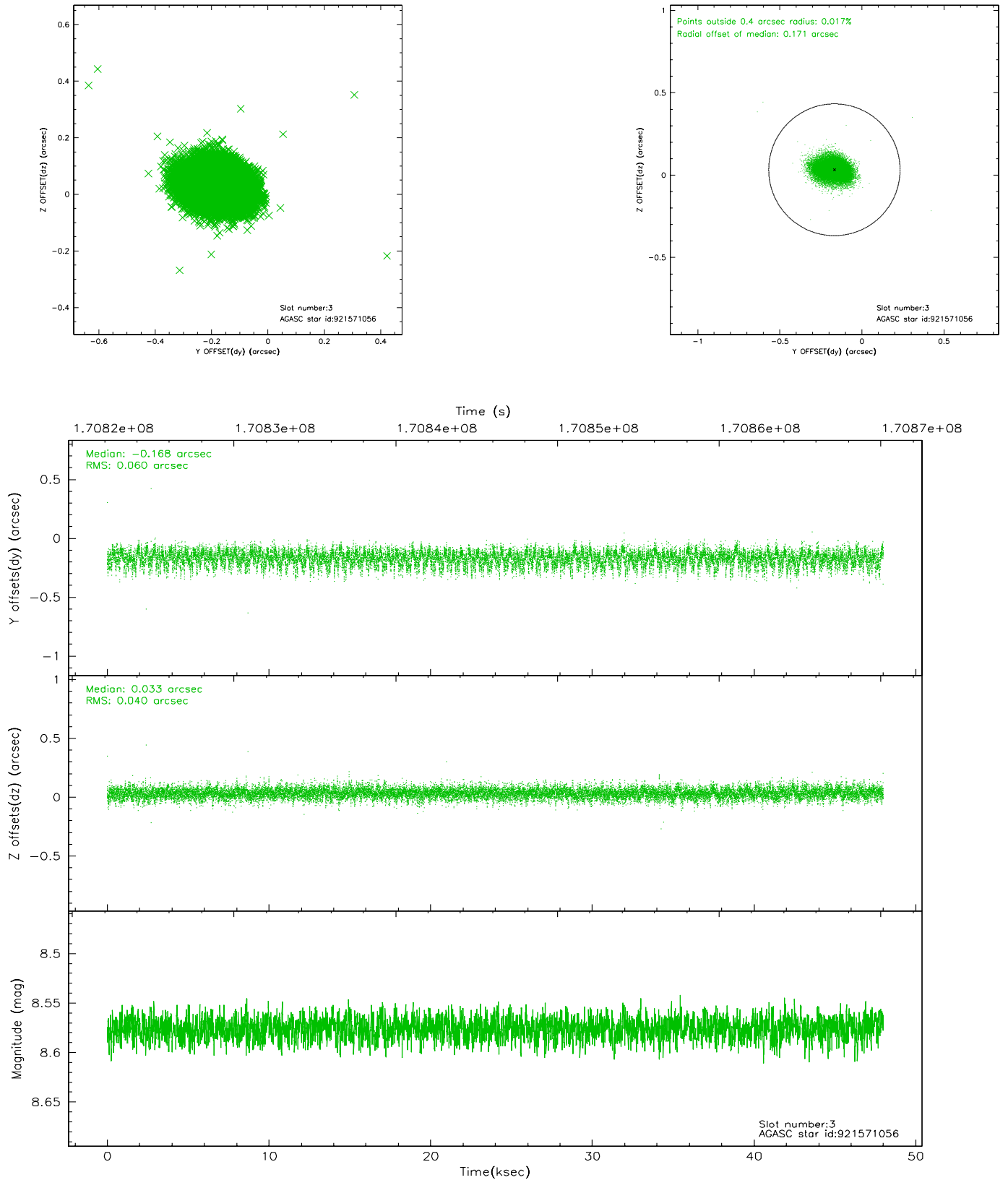


### Slot Statistics

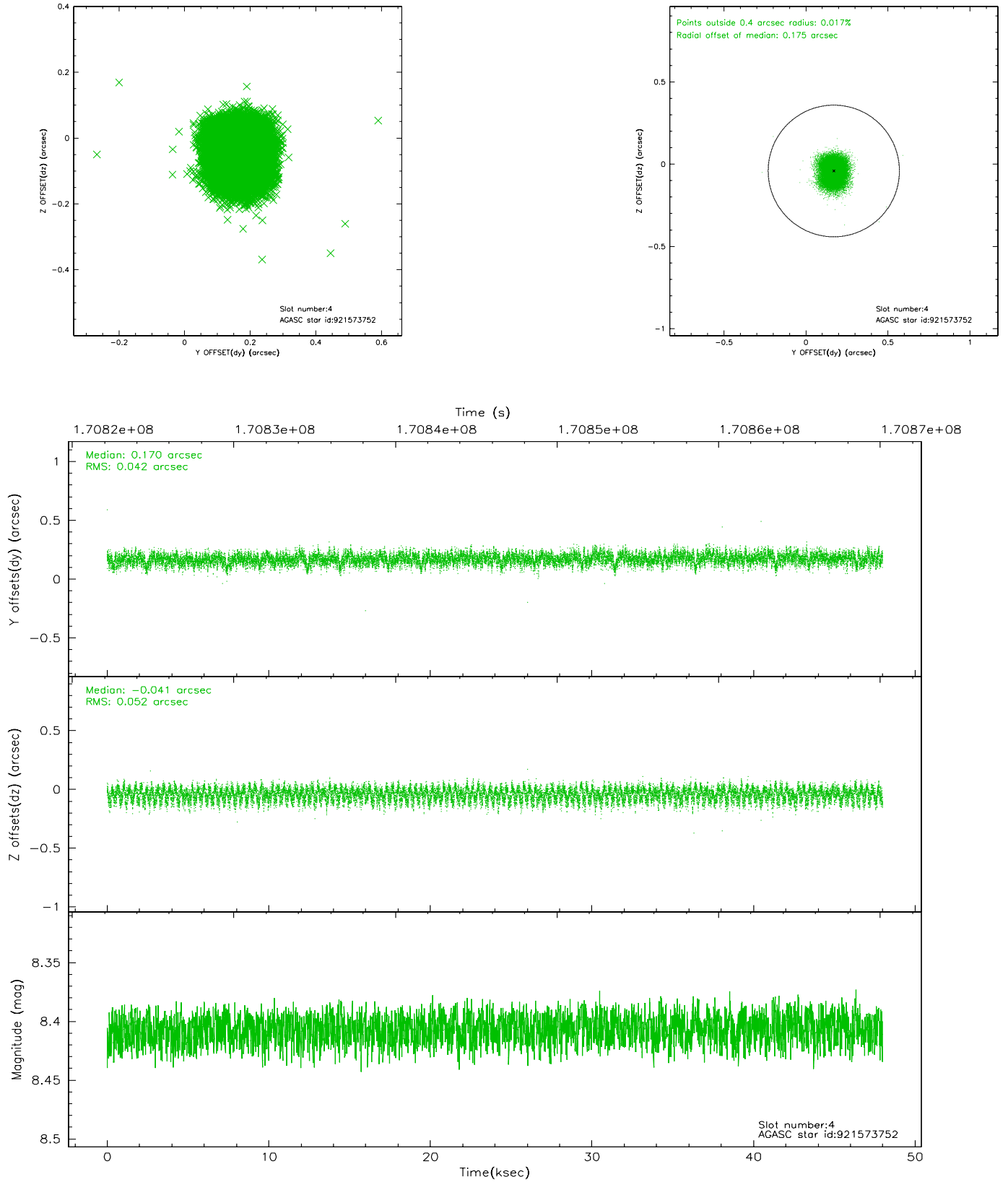
slot	status	id	mag	n_pts	med_dy	med_dz	dr1	dr2	ra	dec	mean_y	mean_z
0	FID	ACIS-I-1	7.24	11709	-0.027	0.055	0.008	0.014	0.000000	0.000000	935.72	-832.89
1	FID	ACIS-I-4	7.17	11710	0.032	-0.002	0.008	0.013	0.000000	0.000000	2155.80	1066.88
2	FID	ACIS-I-5	7.23	11710	-0.104	0.017	0.006	0.011	0.000000	0.000000	-1812.39	1064.69
3	GUIDE	921571056	8.58	23406	-0.168	0.033	0.076	0.127	54.339011	-34.649674	2299.39	-1612.61
4	GUIDE	921573752	8.41	23417	0.170	-0.041	0.071	0.113	55.297577	-34.906150	-652.64	-1200.78
5	GUIDE	921575528	7.97	23416	0.007	0.170	0.062	0.100	55.012292	-34.549755	399.27	-2318.81
6	GUIDE	921966544	7.91	23409	-0.025	-0.120	0.068	0.103	54.743508	-35.636012	495.47	1669.31
7	GUIDE	921970112	9.57	23368	0.021	-0.036	0.108	0.170	54.291262	-35.695592	1758.70	2116.48

## 2.4 Star Slots

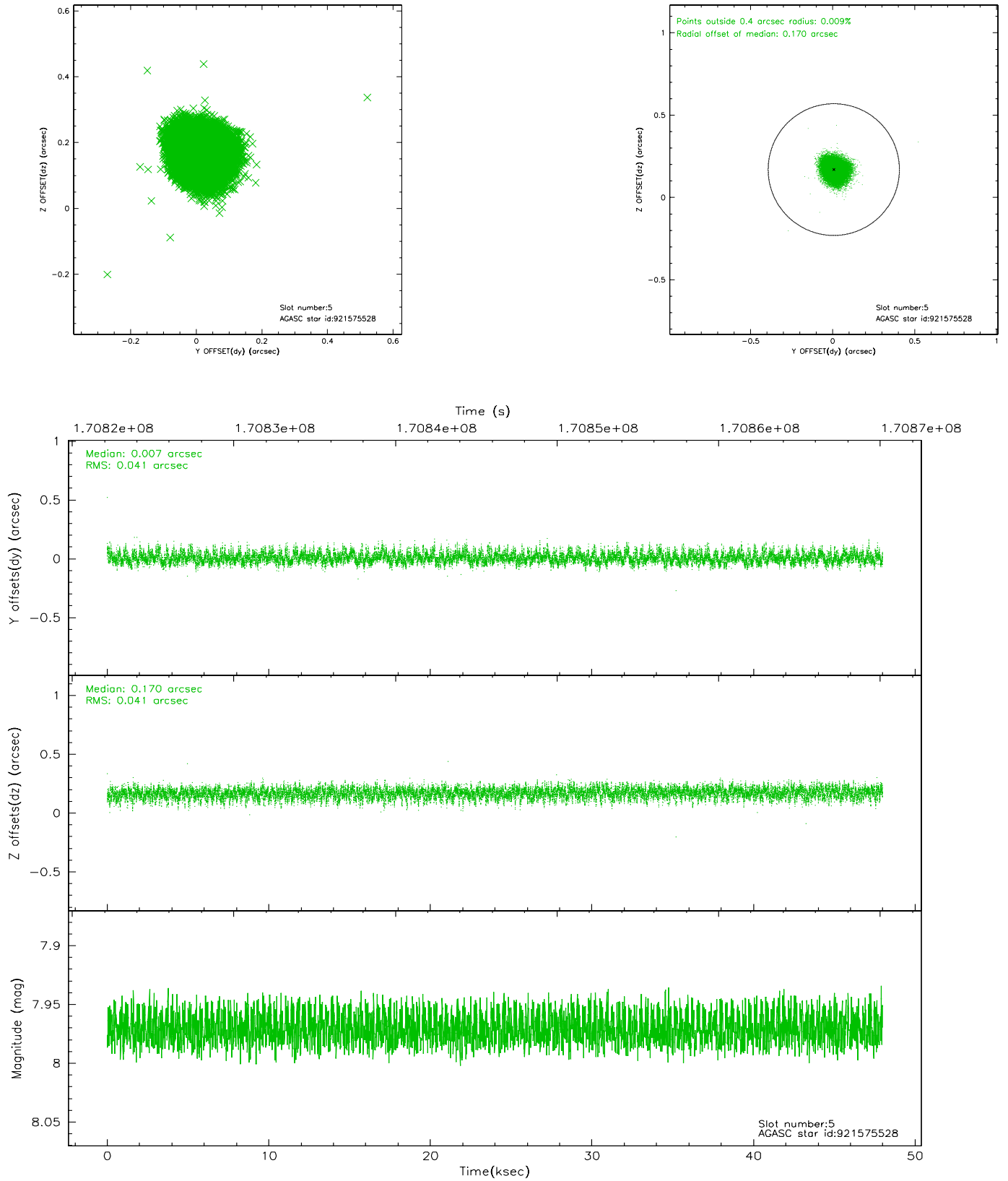
### 2.4.1 Slot 3



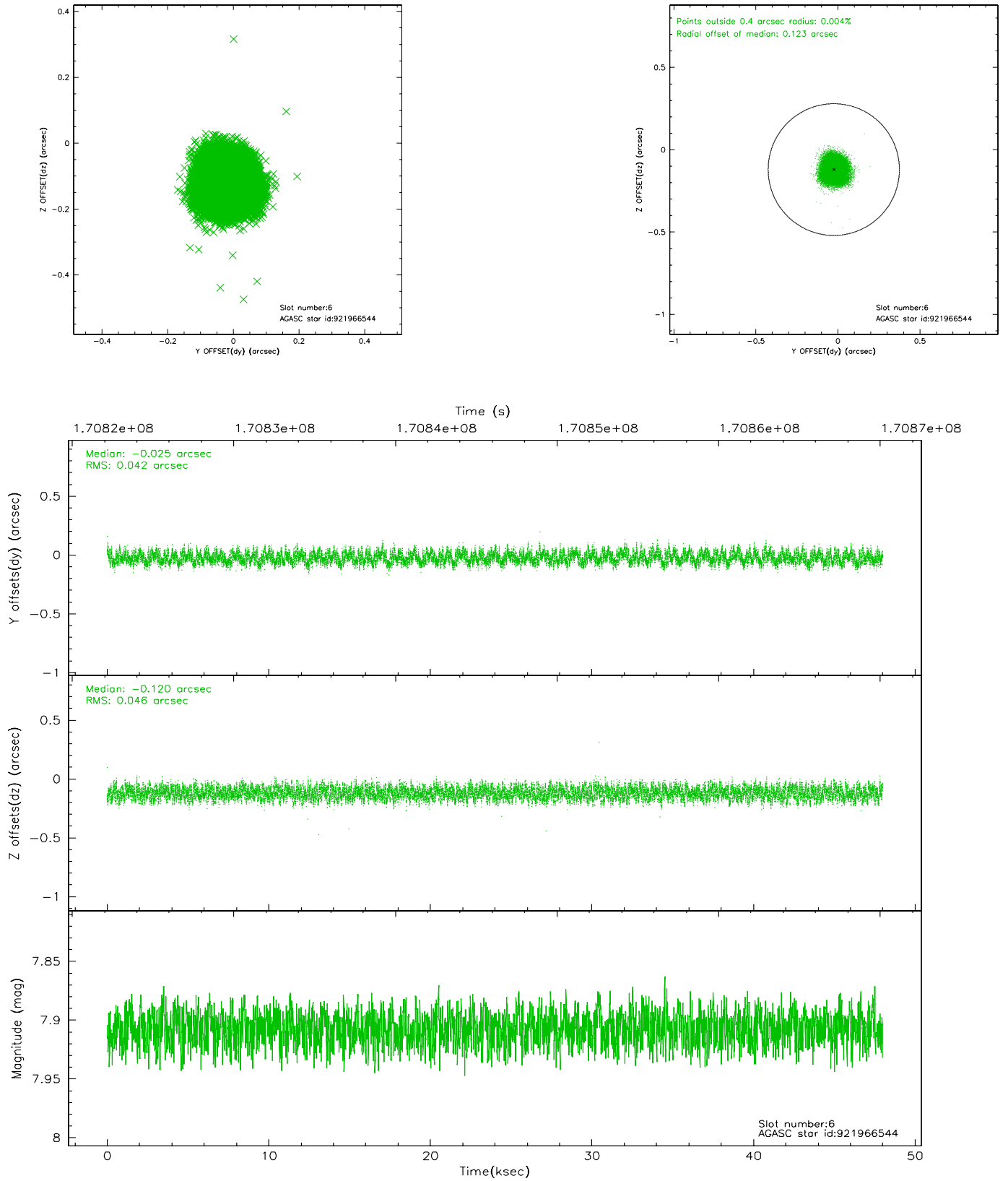
## 2.4.2 Slot 4



### 2.4.3 Slot 5

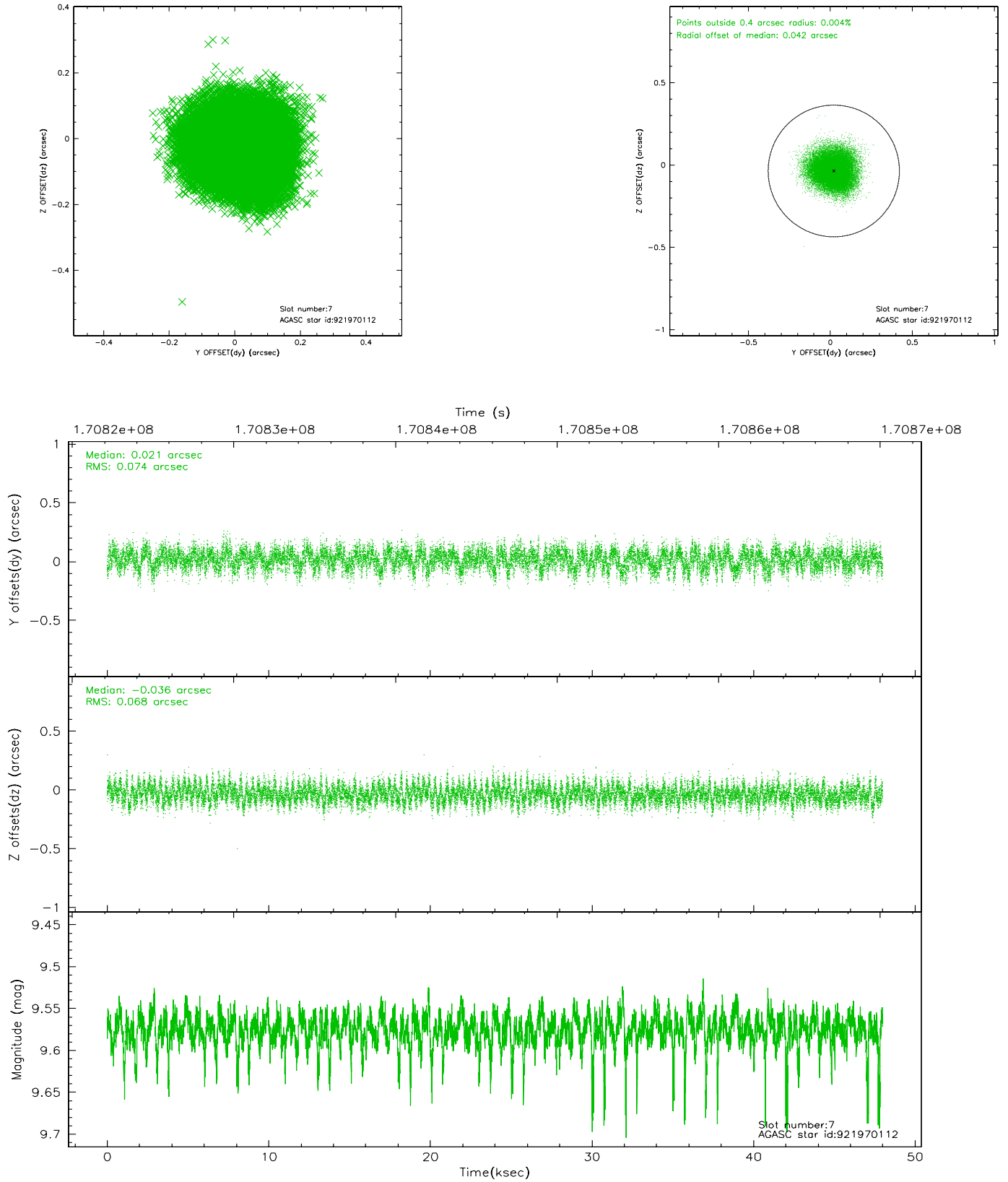


## 2.4.4 Slot 6



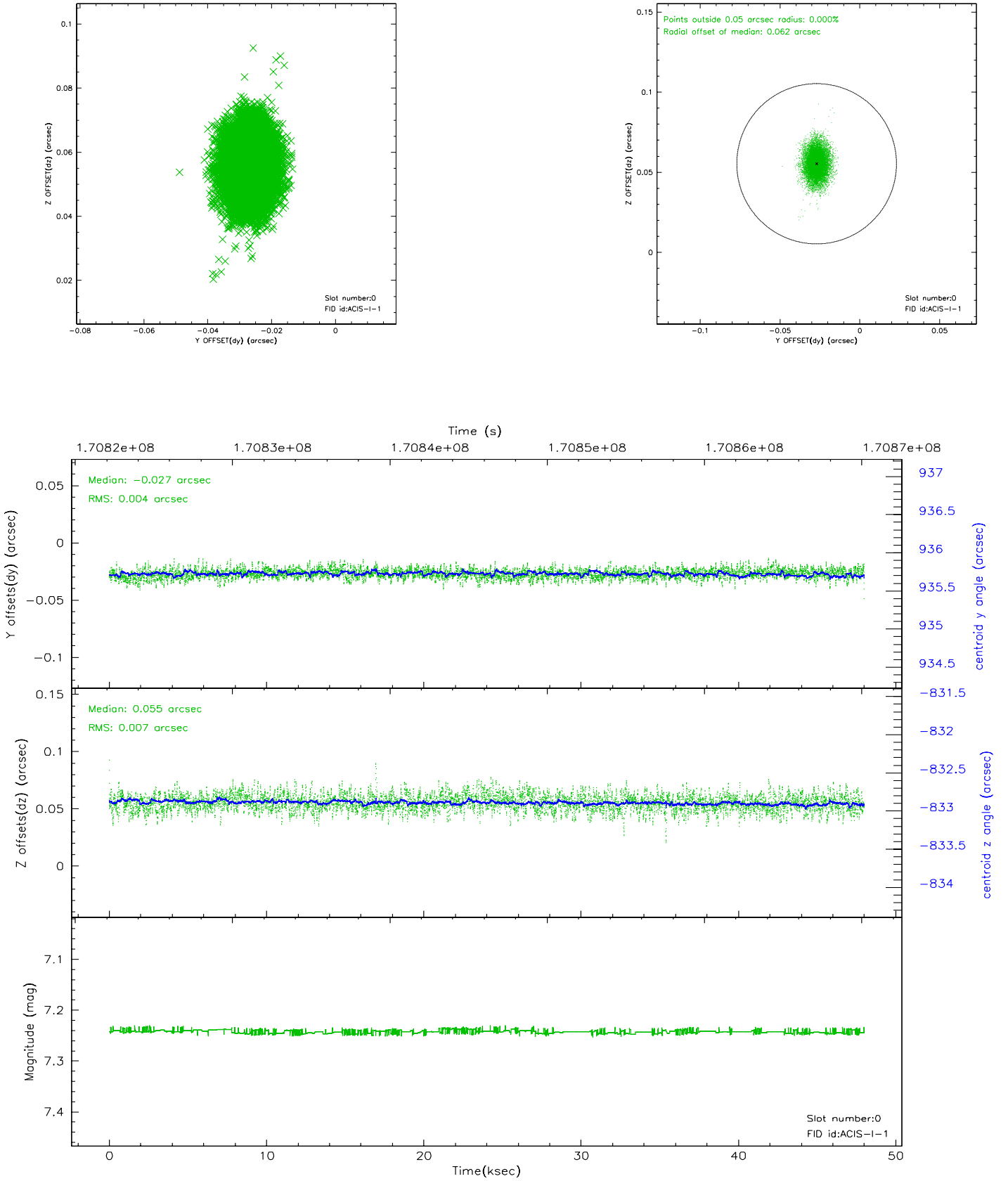


## 2.4.5 Slot 7

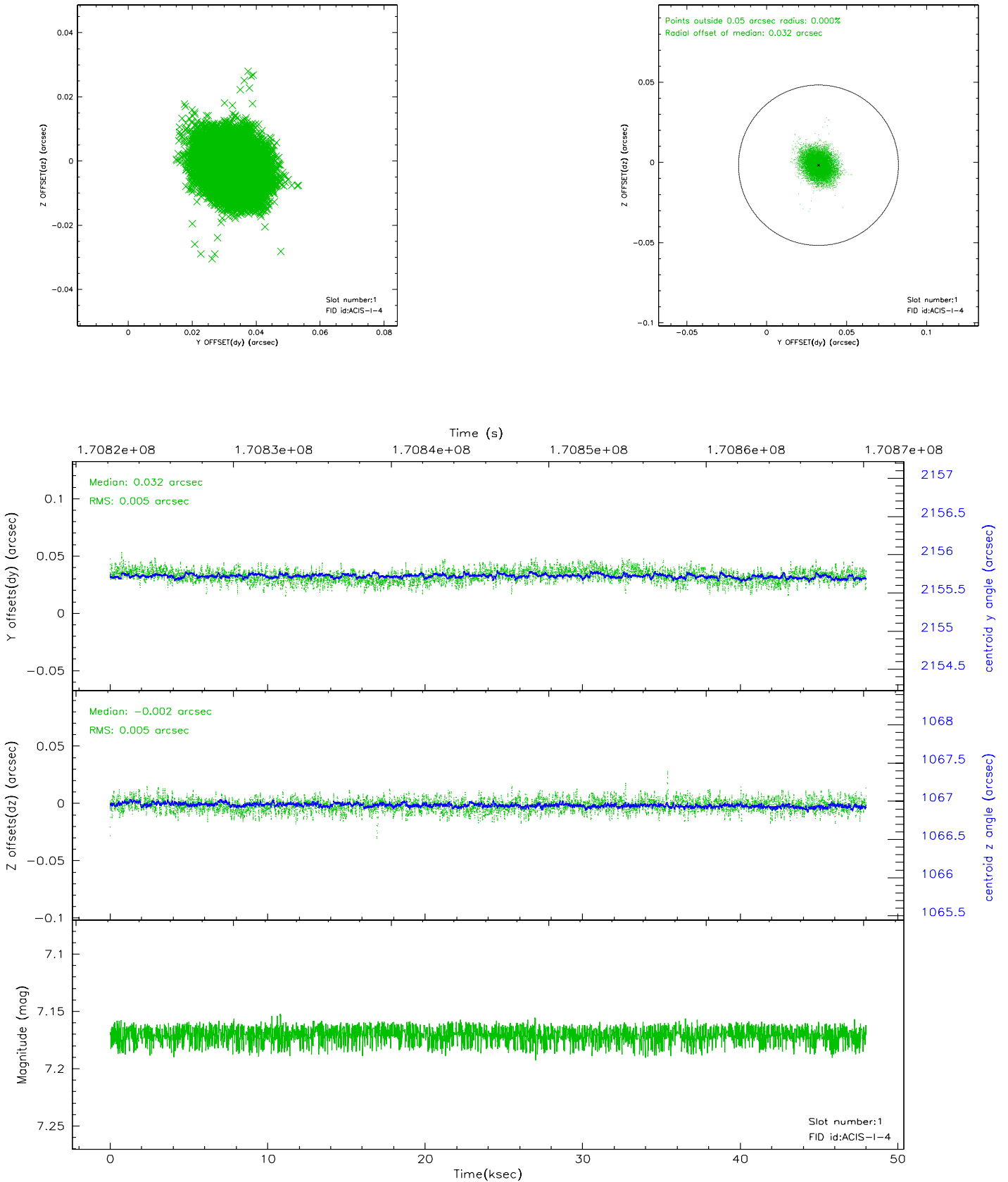


## 2.5 FID Slots

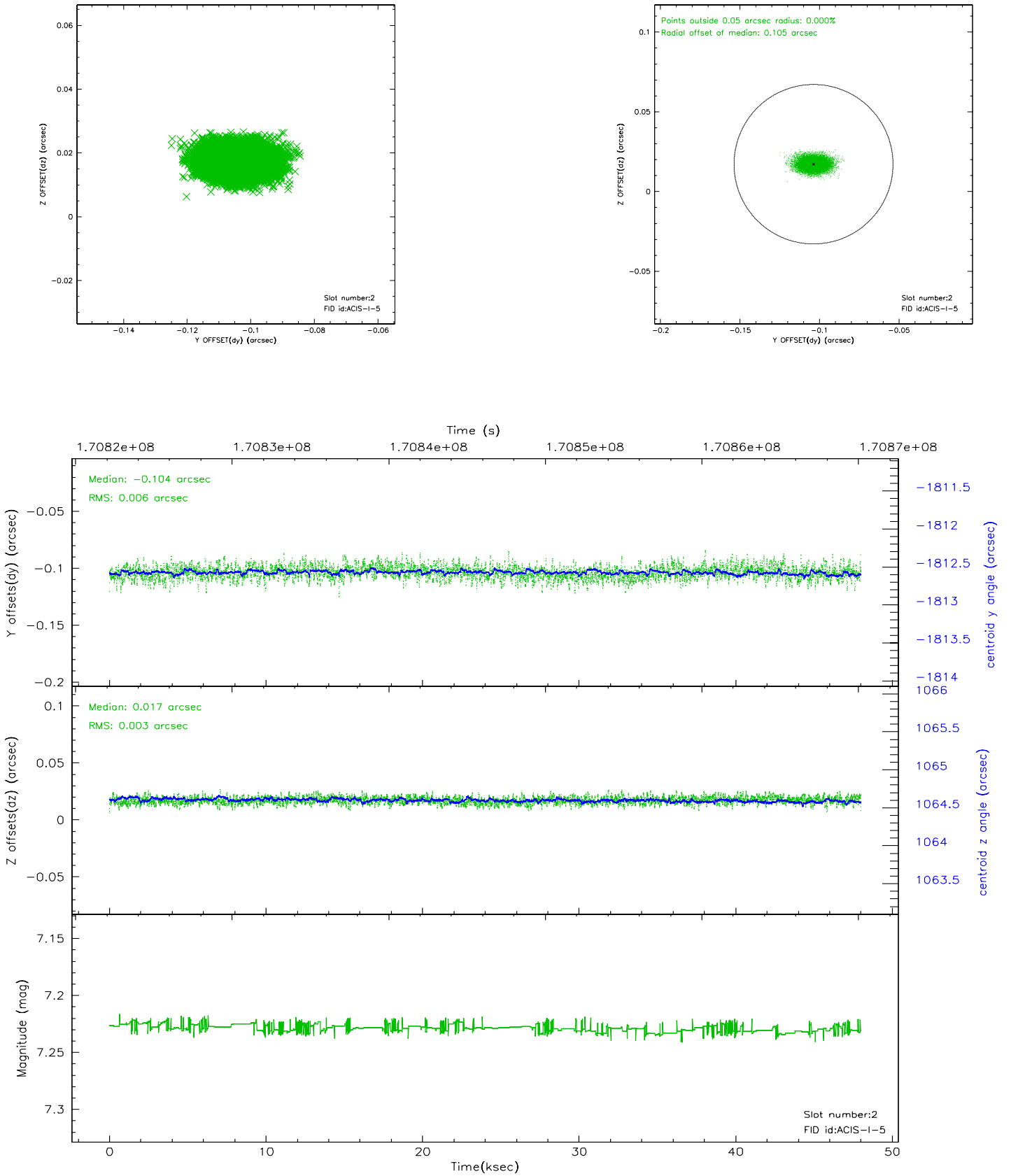
### 2.5.1 Slot 0



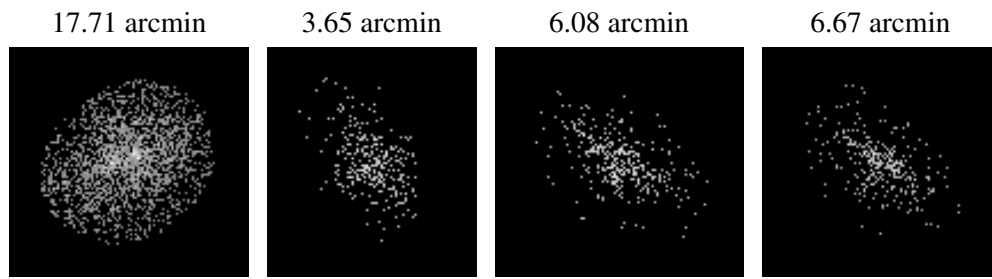
## 2.5.2 Slot 1



### 2.5.3 Slot 2



### 3 Point Sources



## A Summary

### A.1 Status

V&V Scientist	Beth Sundheim
V&V Date (YYYY-MM-DD)	2006.08.03
V&V Edition	1
V&V Disposition and Status	OK
V&V Charge Time	47.578

### A.2 Comments