

V&V Reference Report

L2 ASCDS Version : 7.6.8.1

Observation 4147 - L2 Version 001
Chandra X-Ray Center

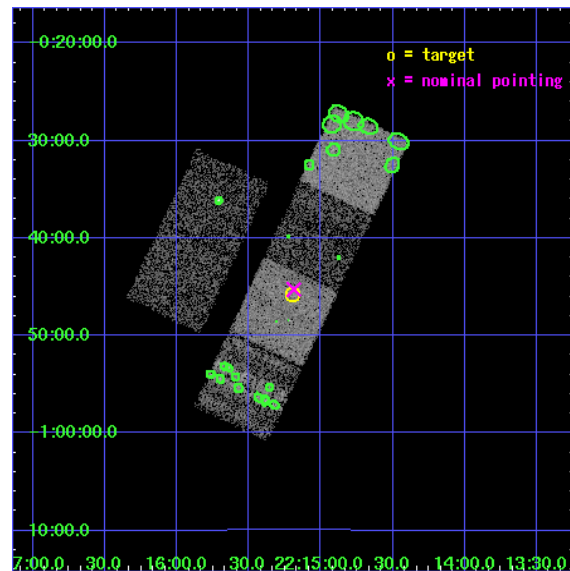
L2 Processing Date : Aug 8 2006

Contents

1	Front	2
2	OBI	3
2.1	OBI	3
2.1.1	Images	3
2.1.2	Bias	3
2.1.3	Parameters	4
2.1.4	Events	4
2.2	Compared Parameters	5
2.3	Aspect	6
2.4	Star Slots	9
2.4.1	Slot 3	9
2.4.2	Slot 4	10
2.4.3	Slot 5	11
2.4.4	Slot 6	12
2.4.5	Slot 7	13
2.5	FID Slots	14
2.5.1	Slot 0	14
2.5.2	Slot 1	15
2.5.3	Slot 2	16
3	Point Sources	17
A	Summary	18
A.1	Status	18
A.2	Comments	18

1 Front

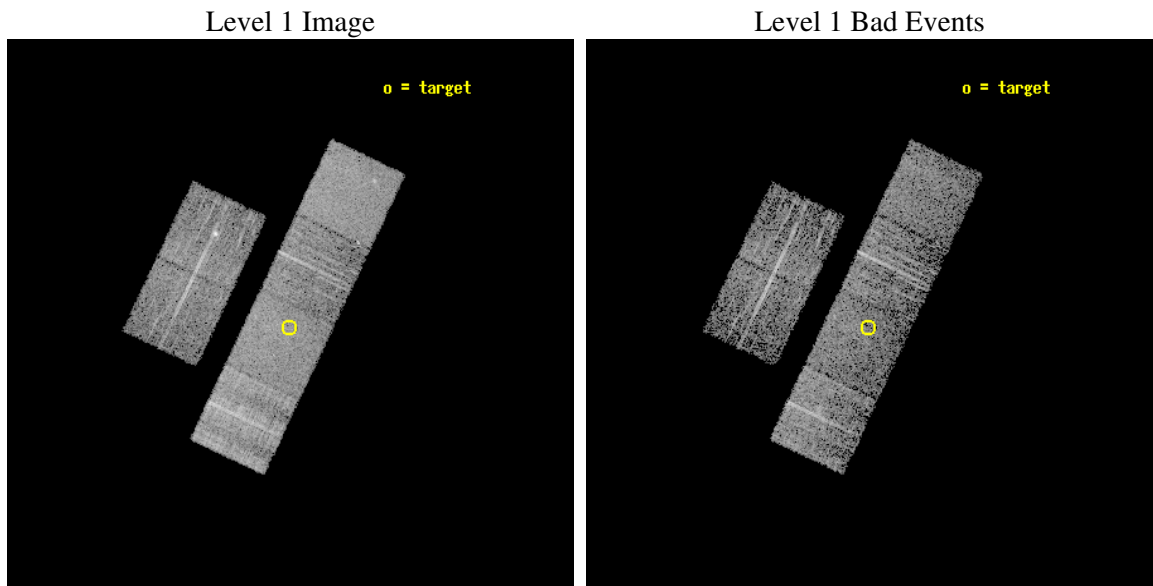
seq_num	700826
obs_id	4147
title	X-RAYS FROM BROAD ABSORPTION LINE QUASARS WITH EXTREME PROPERTIES
observer	Dr. Patrick Hall
object	SDSS J2215-0045
dtcycle	0
cycle	P
ra_targ	333.799583
dec_targ	-0.763861
ra_nom	333.79699583398
dec_nom	-0.75456303885114
roll_nom	115.45523173597
revision	2
ontime	4639.9999827147
livetime	4581.245509061
ontime2	4633.5181119144
ontime3	4639.9999827147
ontime5	4639.9999827147
ontime6	4636.758992523
ontime7	4639.9999827147
ontime8	4636.7591420114
l2events	48012



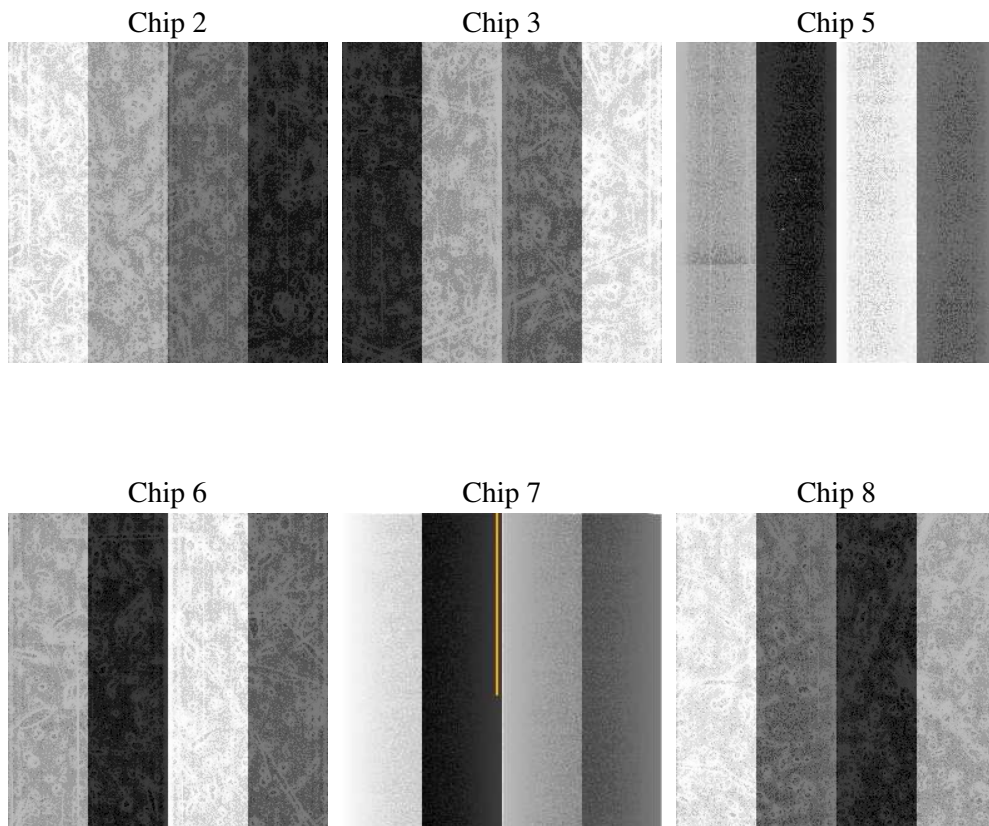
2 OBI

2.1 OBI

2.1.1 Images



2.1.2 Bias



2.1.3 Parameters

obi_num	0
ascdsver	7.6.8.1
caldsver	3.2.2
date	2006-08-08T22:21:02
revision	2

sched_exp_time	4886.000000
ontime	4644.3553771377
ontime2	4637.8735063374
ontime3	4644.3553771377
ontime5	4644.3553771377
ontime6	4641.114386946
ontime7	4644.3553771377
ontime8	4641.1144168675
l1events	213355

2.1.4 Events

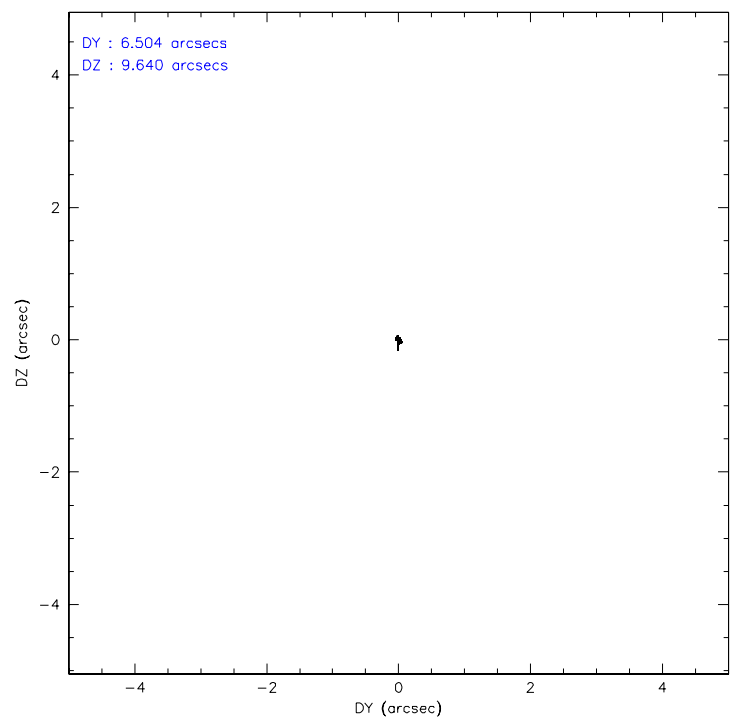
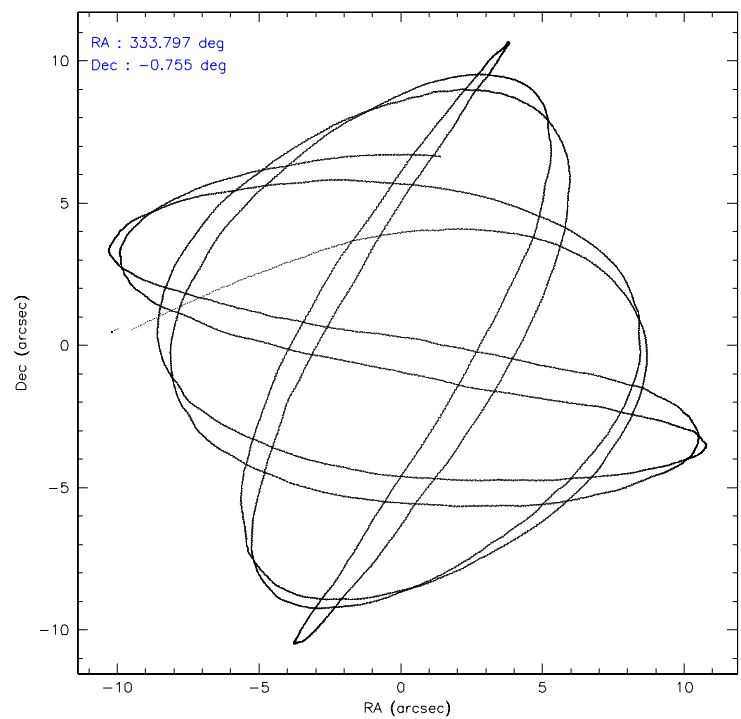
	ccd 2	ccd 3	ccd 5	ccd 6	ccd 7	ccd 8
level 1 events	30496	26823	40184	30692	36600	48560
rejected events	25660	22911	23025	26614	22568	31547
rejected %	84%	85%	57%	86%	61%	64%

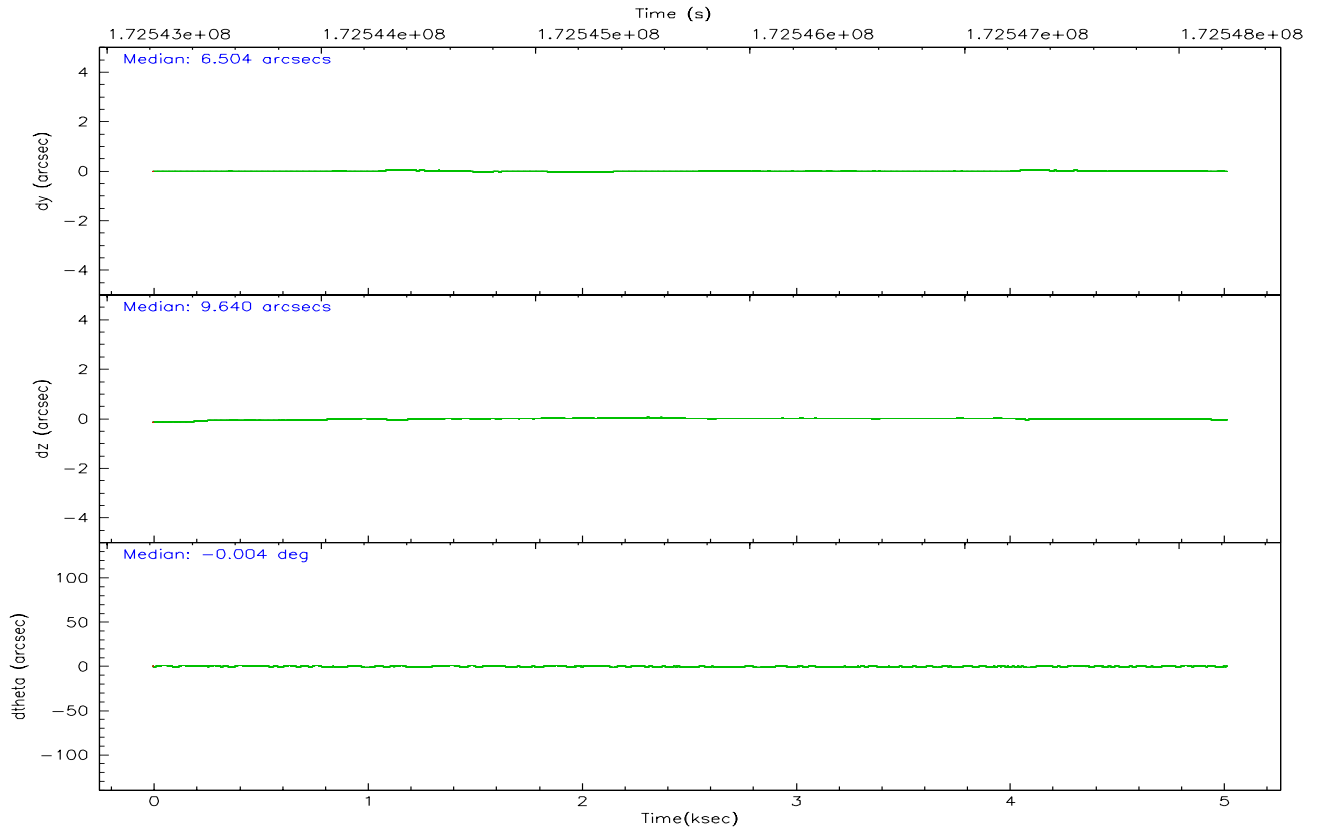
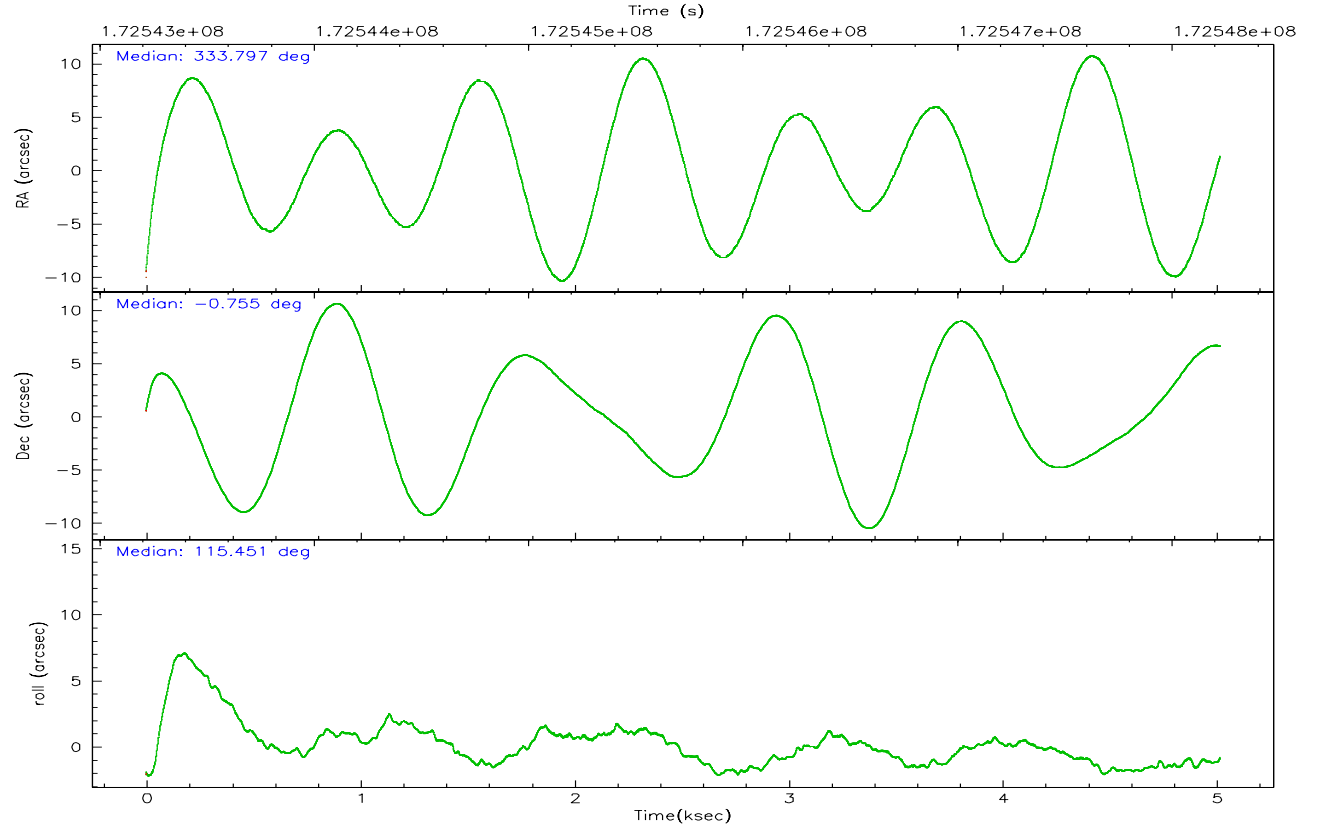
	ccd 2	ccd 3	ccd 5	ccd 6	ccd 7	ccd 8
grade 0 events	2407	1618	954	1670	853	5714
	7%	6%	2%	5%	2%	11%
grade 1 events	24	18	60	17	24	67
	0%	0%	0%	0%	0%	0%
grade 2 events	1004	904	5333	995	3521	2635
	3%	3%	13%	3%	9%	5%
grade 3 events	336	321	458	323	723	2703
	1%	1%	1%	1%	1%	5%
grade 4 events	383	316	476	321	705	2594
	1%	1%	1%	1%	1%	5%
grade 5 events	1048	1158	1928	1223	2314	1717
	3%	4%	4%	3%	6%	3%
grade 6 events	711	757	9964	774	8255	3376
	2%	2%	24%	2%	22%	6%
grade 7 events	24583	21731	21011	25369	20205	29754
	80%	81%	52%	82%	55%	61%

2.2 Compared Parameters

Parameter	Planned	Actual	Parameter	Planned	Actual
Instrument	ACIS	ACIS	Obspar format version number	6	6
Detector	ACIS-235678	ACIS-235678	Obspar file type	PREDICTED	ACTUAL
Grating	NONE	NONE	Obspar update status	NONE	UPDATED
Data mode	FAINT	FAINT	On-chip summing requested	N	N
Observation mode	POINTING	POINTING	Subarray requested	NONE	NONE
Pointing RA	333.819659	333.7969958339762	Alternating exposures requested	N	N
Pointing Dec	-0.769667	-0.75456303885114	Primary exposure time	0.000000	3.2
Pointing Roll	115.298921	115.4552317359717			
SIM focus pos (mm)	-0.684267	-0.6828225247311905			
SIM defocus (mm)	0	0.001444936568705701			
SIM translation stage pos (mm)	-190.132523	-190.1400660498719			
SIM translation stage offset (mm)	0	0.00754346686406393			
Observation start time	172543343.184000	172542333.87771			
Observation start date	2003-06-21T00:41:19	2003-06-21T00:25:33			
Observation end time	172548229.184000	172548949.74049			
Observation end date	2003-06-21T02:02:45	2003-06-21T02:15:49			
Read mode	TIMED	TIMED			

2.3 Aspect



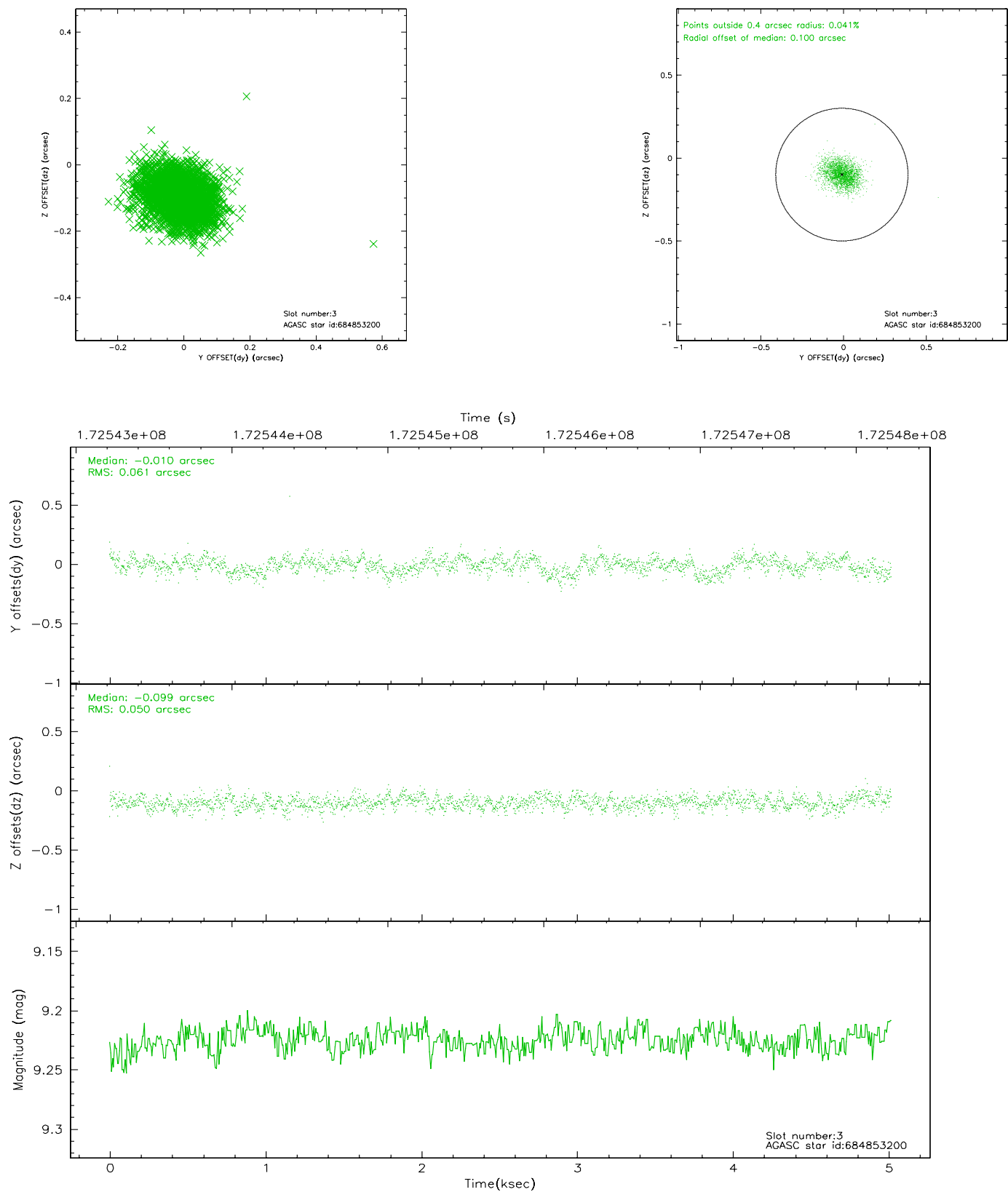


Slot Statistics

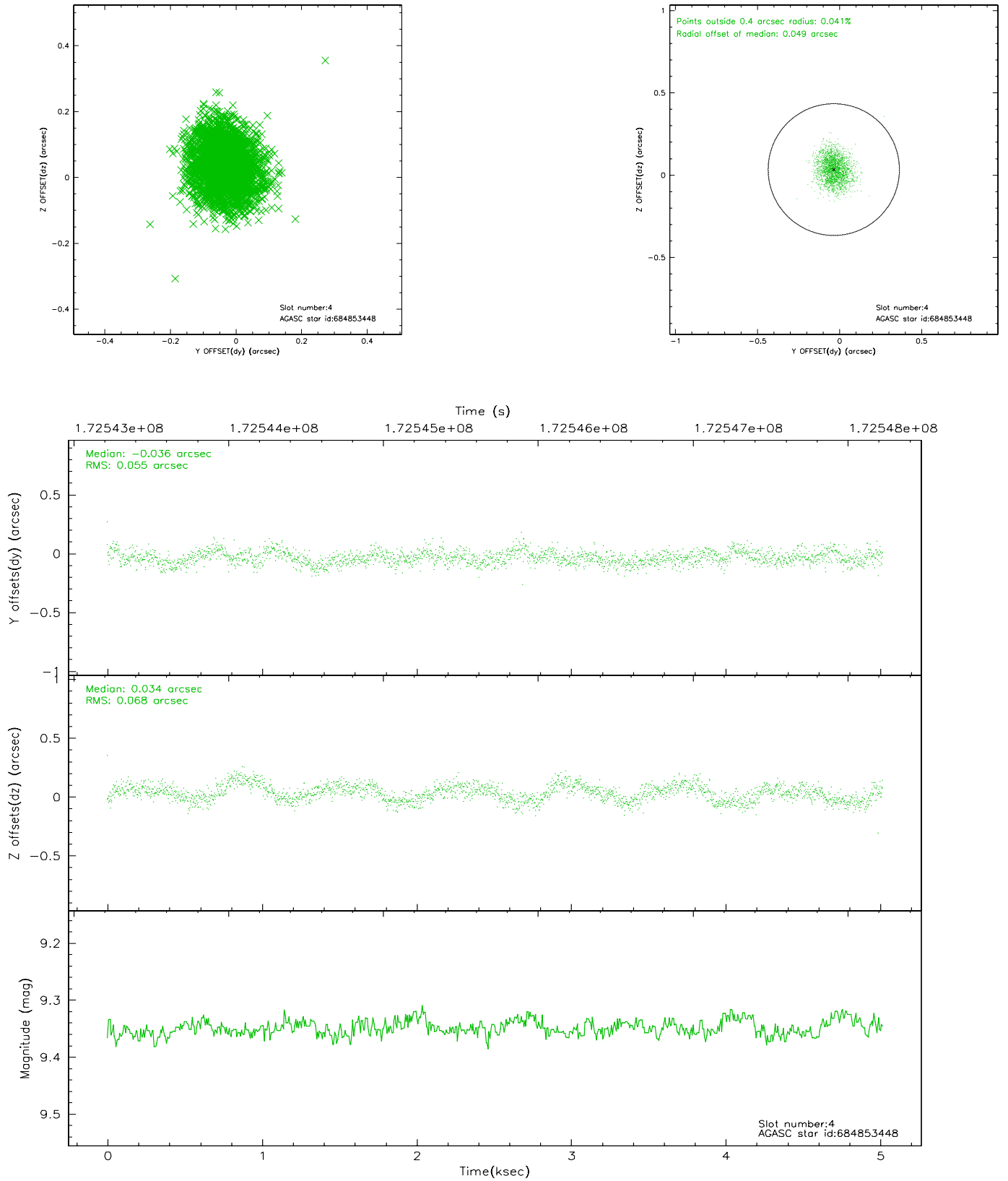
slot	status	id	mag	n_pts	med_dy	med_dz	dr1	dr2	ra	dec	mean_y	mean_z
0	FID	ACIS-S-2	7.10	1224	-0.034	-0.010	0.005	0.008	0.000000	0.000000	-759.26	-1730.89
1	FID	ACIS-S-4	7.21	1225	0.009	0.027	0.005	0.009	0.000000	0.000000	2153.49	176.41
2	FID	ACIS-S-6	7.35	1225	-0.003	-0.010	0.006	0.011	0.000000	0.000000	404.29	815.13
3	GUIDE	684853200	9.22	2449	-0.010	-0.099	0.083	0.137	333.536858	-0.658666	796.44	749.64
4	GUIDE	684853448	9.35	2445	-0.036	0.034	0.093	0.147	333.686956	-0.382363	1465.17	-163.58
5	GUIDE	684853480	9.23	2448	-0.074	-0.220	0.075	0.123	333.348189	-0.795562	641.60	1574.06
6	GUIDE	684859784	9.13	2448	0.154	0.182	0.086	0.135	334.538556	-1.122310	-2253.58	-1796.62
7	GUIDE	73279648	9.45	2444	-0.030	0.103	0.129	0.219	333.975275	0.037033	2385.69	-1748.04

2.4 Star Slots

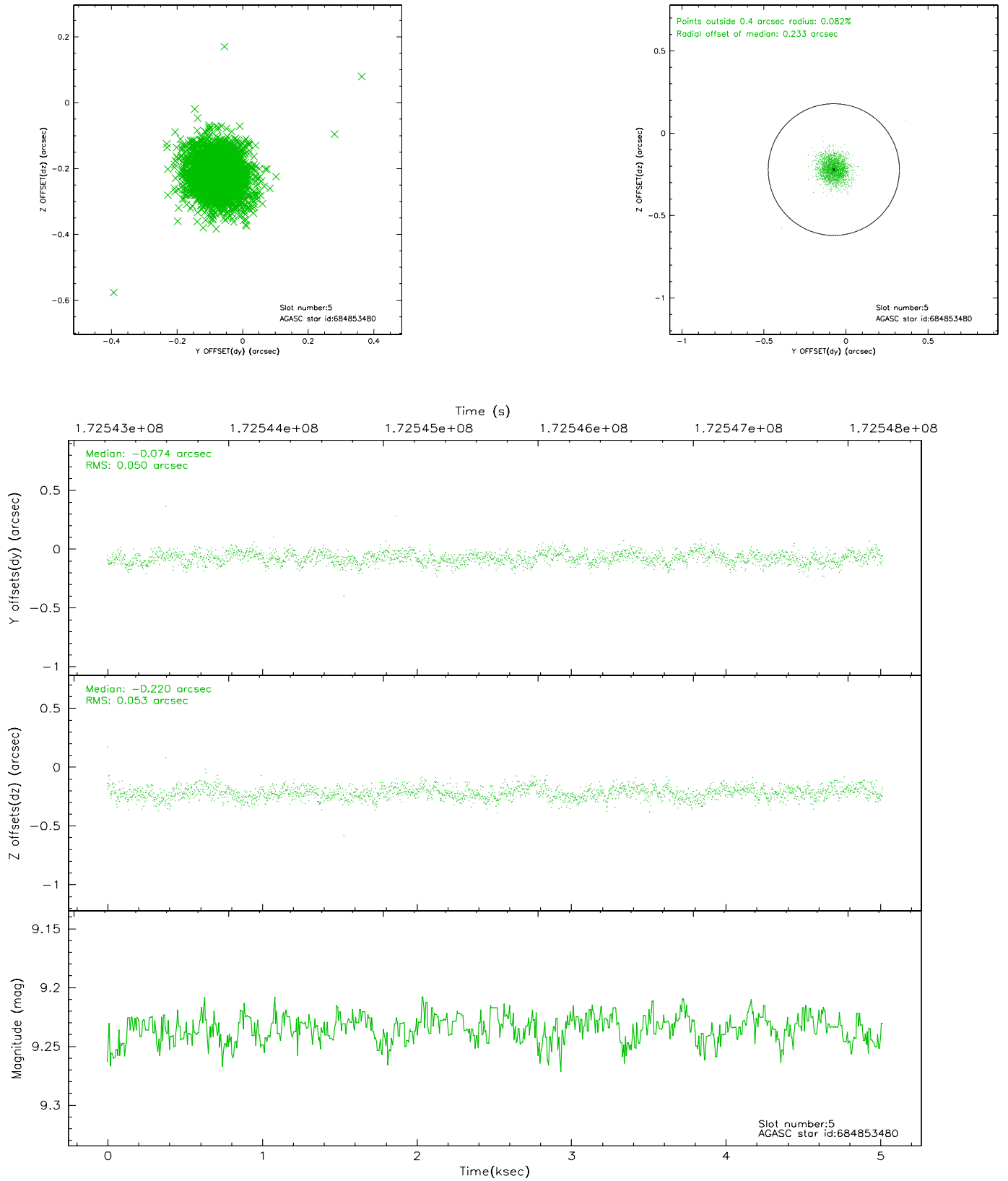
2.4.1 Slot 3



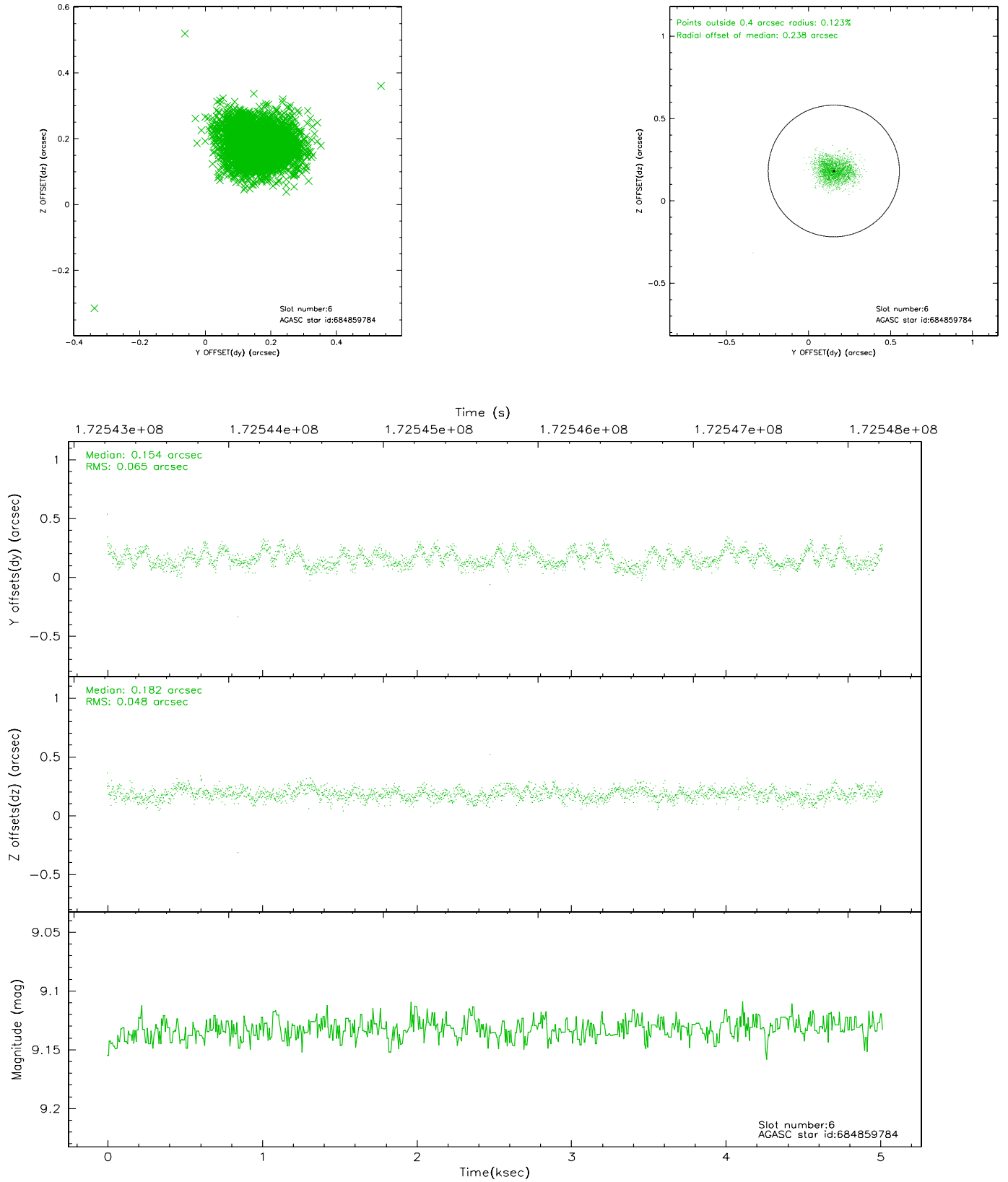
2.4.2 Slot 4



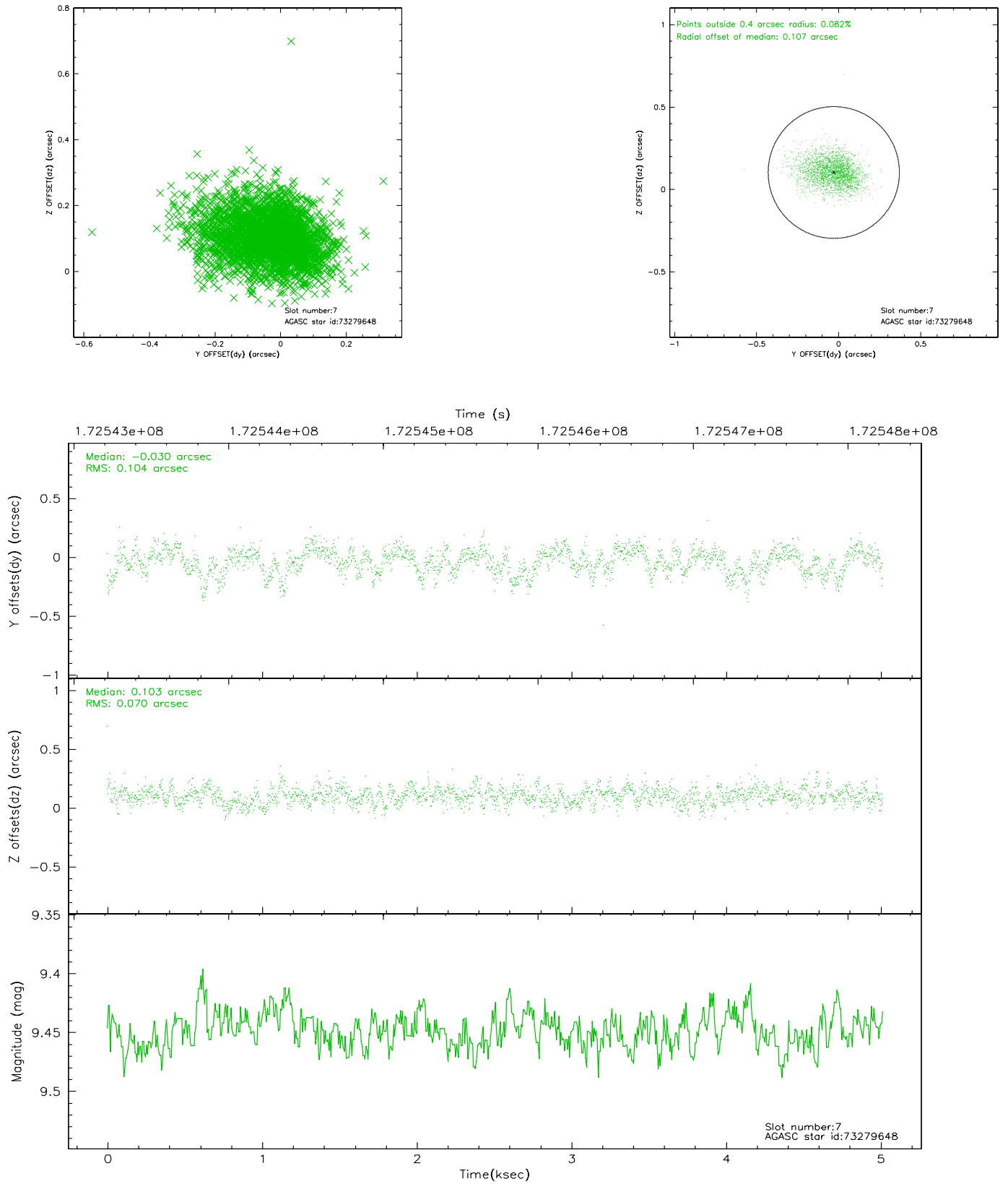
2.4.3 Slot 5



2.4.4 Slot 6

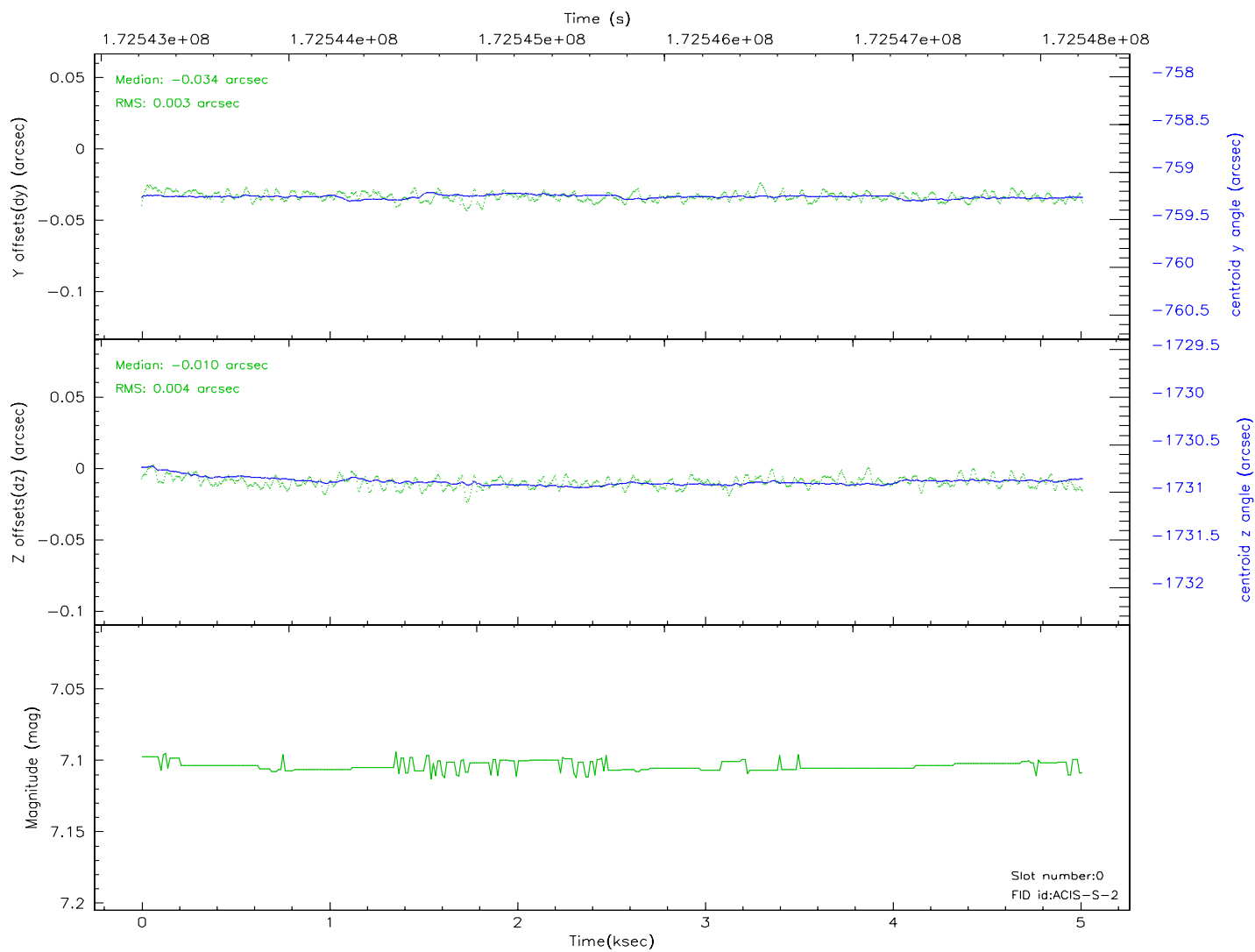
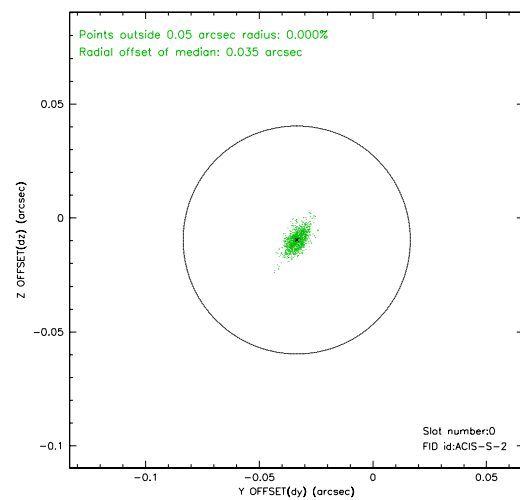
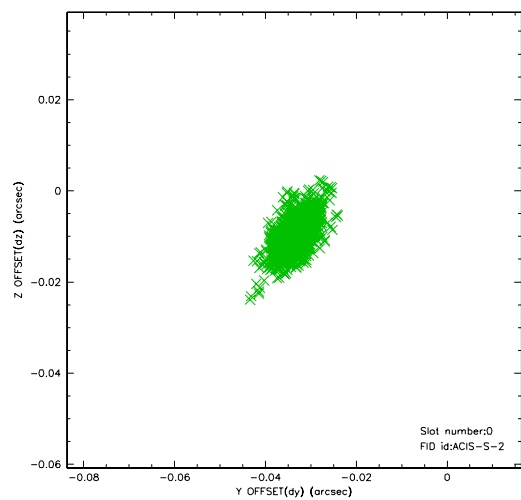


2.4.5 Slot 7

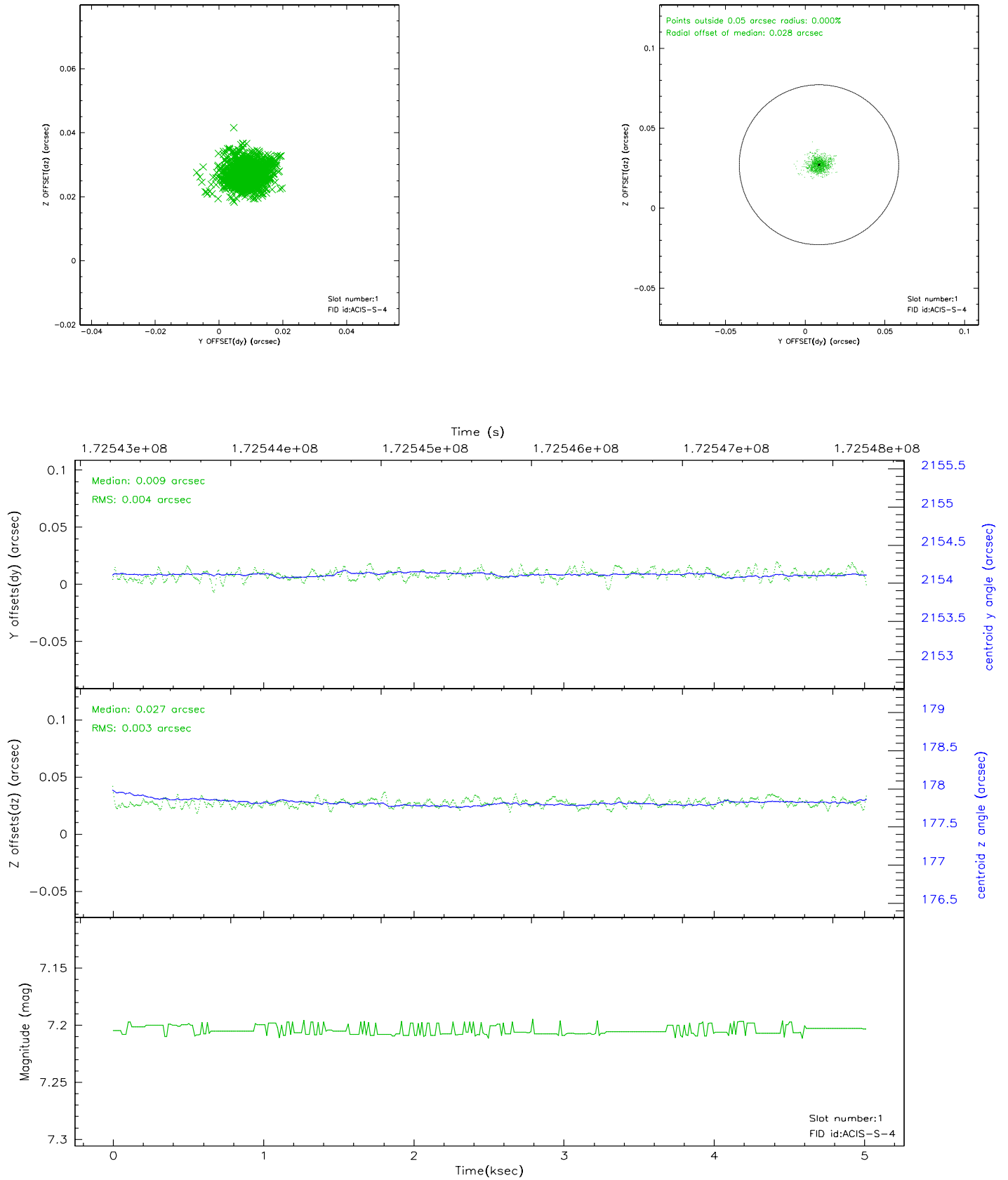


2.5 FID Slots

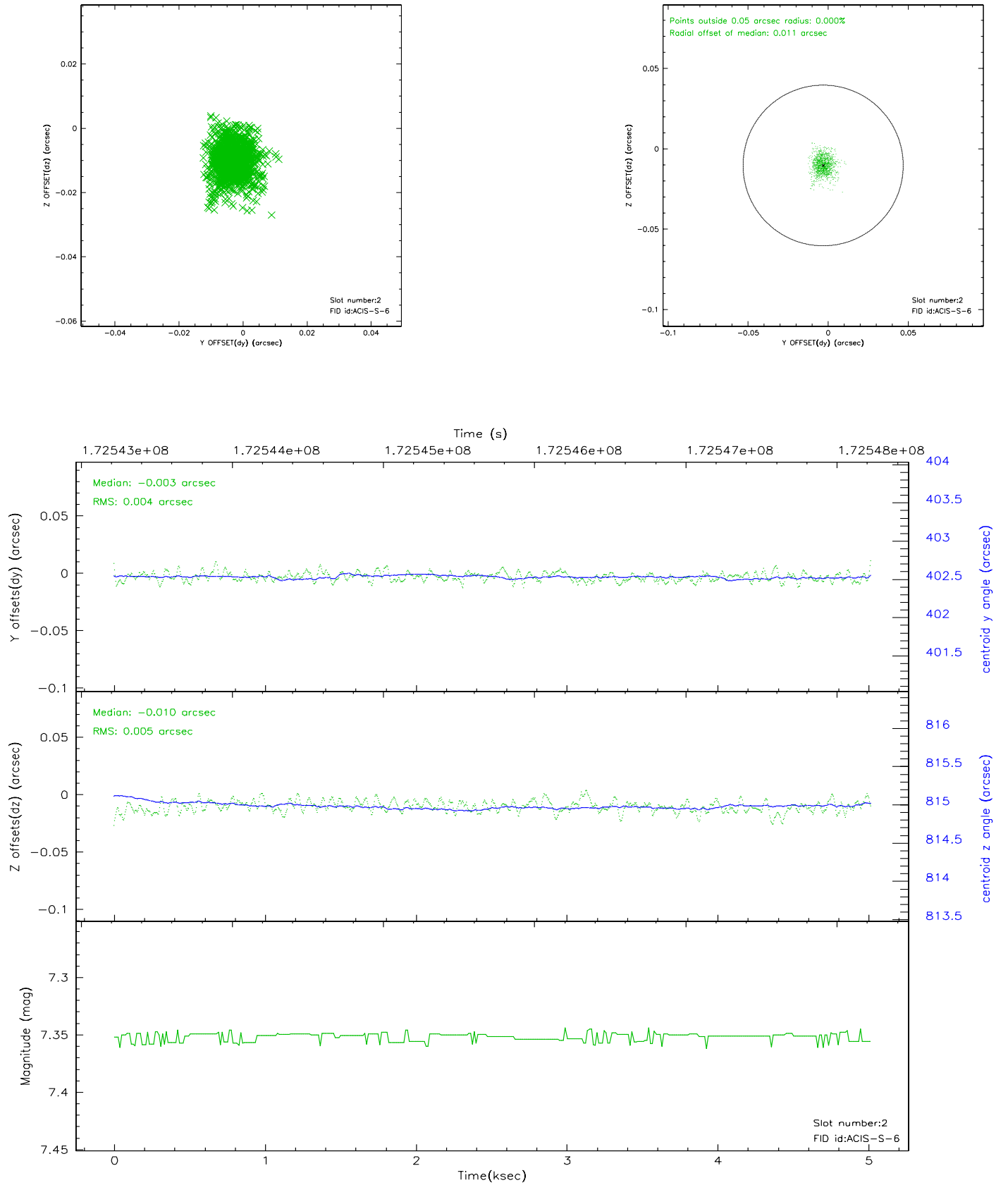
2.5.1 Slot 0



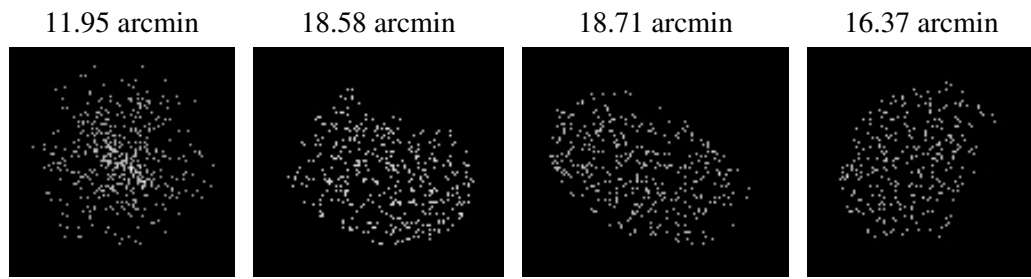
2.5.2 Slot 1



2.5.3 Slot 2



3 Point Sources



A Summary

A.1 Status

V&V Scientist	Jen Lauer
V&V Date (YYYY-MM-DD)	2006.08.09
V&V Edition	1
V&V Disposition and Status	OK
V&V Charge Time	4.643

A.2 Comments