

V&V Reference Report

L2 ASCDS Version : 7.6.8

Observation 4117 - L2 Version 001
Chandra X-Ray Center

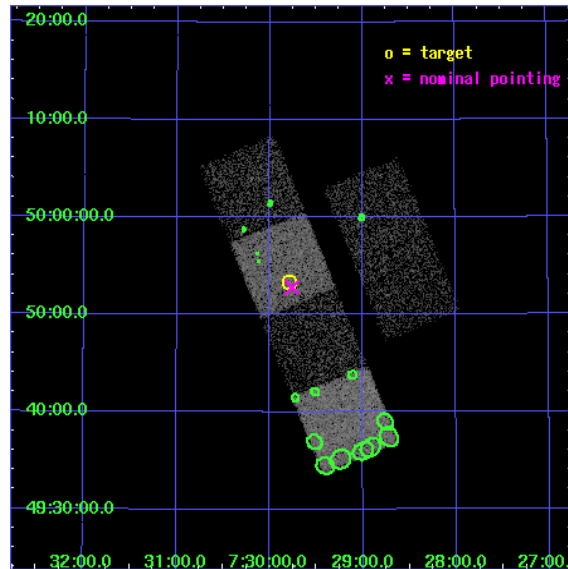
L2 Processing Date : Jul 22 2006

Contents

1	Front	2
2	OBI	3
2.1	OBI	3
2.1.1	Images	3
2.1.2	Bias	3
2.1.3	Parameters	4
2.1.4	Events	4
2.2	Compared Parameters	5
2.3	Aspect	6
2.4	Star Slots	9
2.4.1	Slot 3	9
2.4.2	Slot 4	10
2.4.3	Slot 5	11
2.4.4	Slot 6	12
2.4.5	Slot 7	13
2.5	FID Slots	14
2.5.1	Slot 0	14
2.5.2	Slot 1	15
2.5.3	Slot 2	16
3	Point Sources	17
A	Summary	18
A.1	Status	18
A.2	Comments	18

1 Front

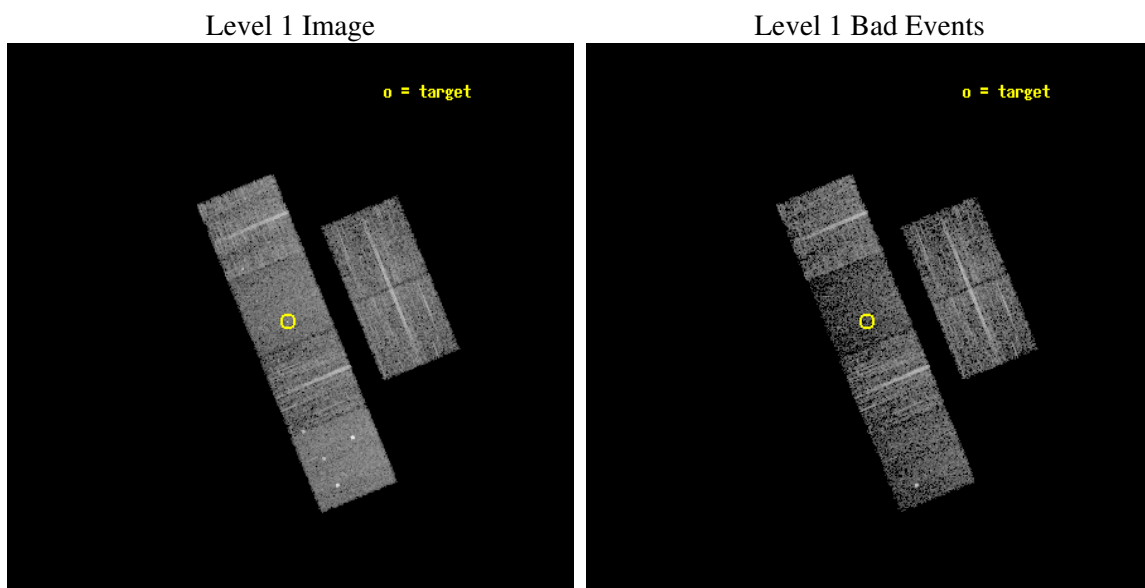
seq_num	700796
obs_id	4117
title	WHAT KIND OF JETS DOES NATURE MAKE? X-RAY CHARACTERIZATION OF THE FIRST FLAT SPECTRUM SAMPLE
observer	Dr. Giovanni Fossati
object	TXS 0726+499
dtcycle	0
cycle	P
ra_targ	112.448333
dec_targ	49.888083
ra_nom	112.44035193592
dec_nom	49.879892642855
roll_nom	247.68445859553
revision	2
ontime	5961.5999777913
livetime	5886.110609228
ontime2	5961.5999777913
ontime3	5961.5999777913
ontime5	5961.5999777913
ontime6	5955.1181170046
ontime7	5961.5999777913
ontime8	5961.5999777913
l2events	39308



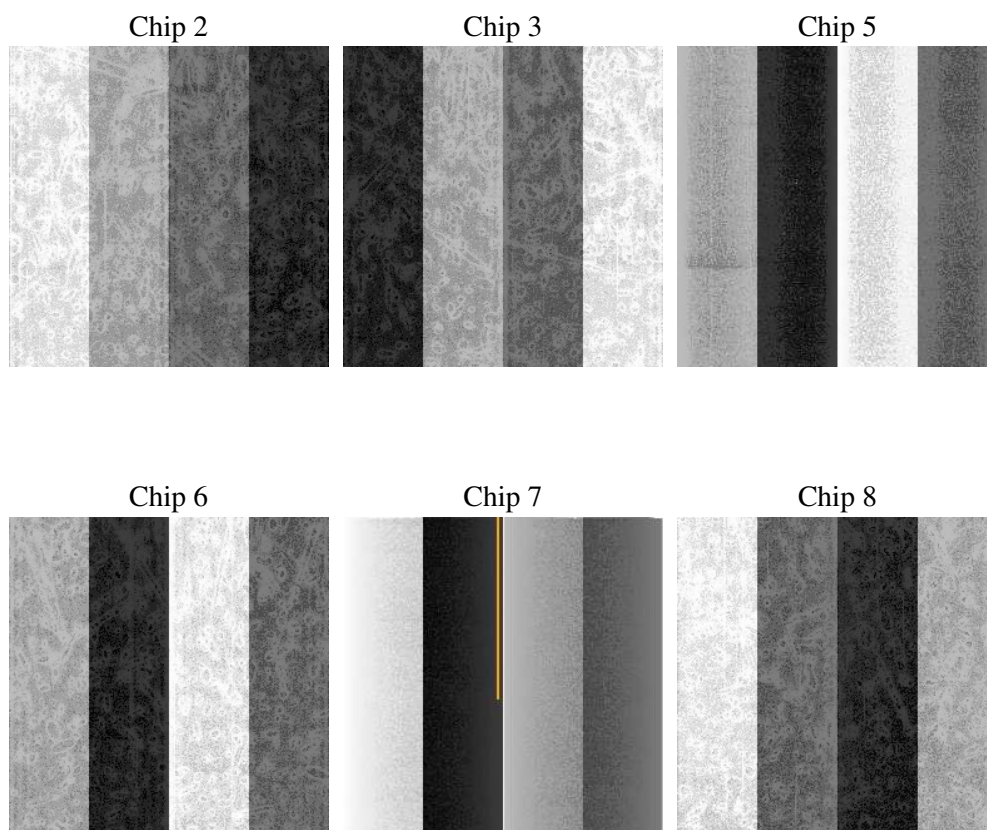
2 OBI

2.1 OBI

2.1.1 Images



2.1.2 Bias



2.1.3 Parameters

obi_num	0
ascdsver	7.6.8
caldbver	3.2.2
date	2006-07-22T20:42:56
revision	2

sched_exp_time	6000.000000
ontime	5966.6843614876
ontime2	5966.6843415499
ontime3	5966.6843415499
ontime5	5966.6843614876
ontime6	5960.2024807632
ontime7	5966.6843614876
ontime8	5966.6843614876
l1events	192286

2.1.4 Events

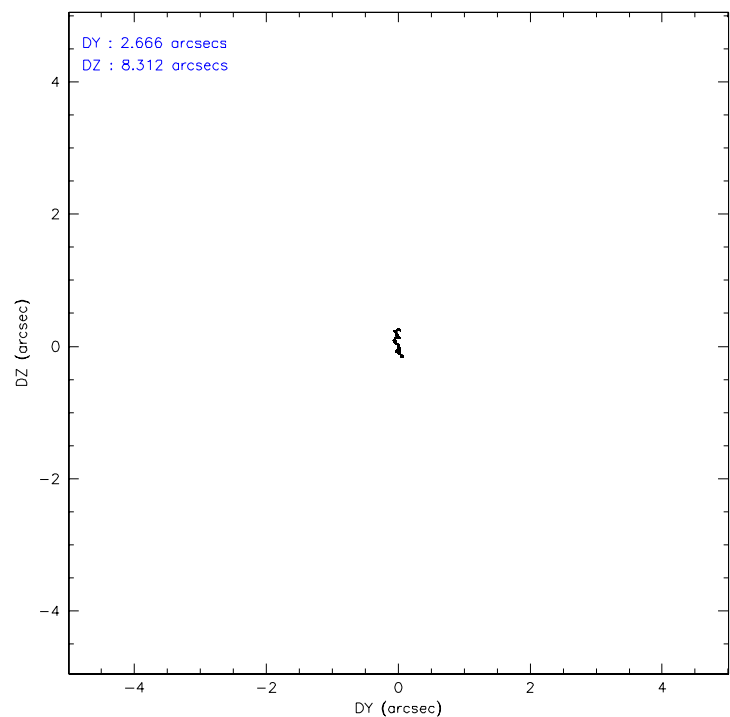
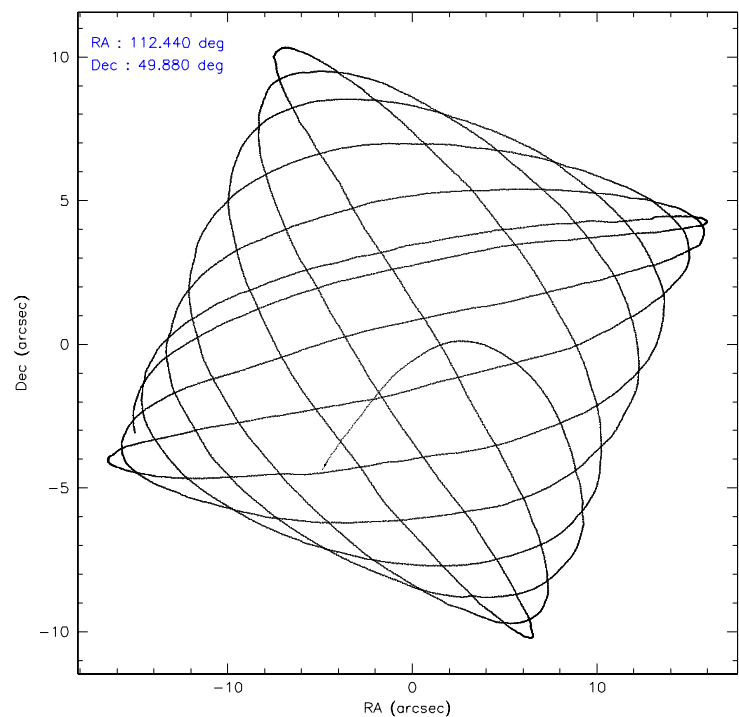
	ccd 2	ccd 3	ccd 5	ccd 6	ccd 7	ccd 8
level 1 events	31554	28043	37121	29813	27802	37953
rejected events	28807	25224	17946	26869	15027	29169
rejected %	91%	89%	48%	90%	54%	76%

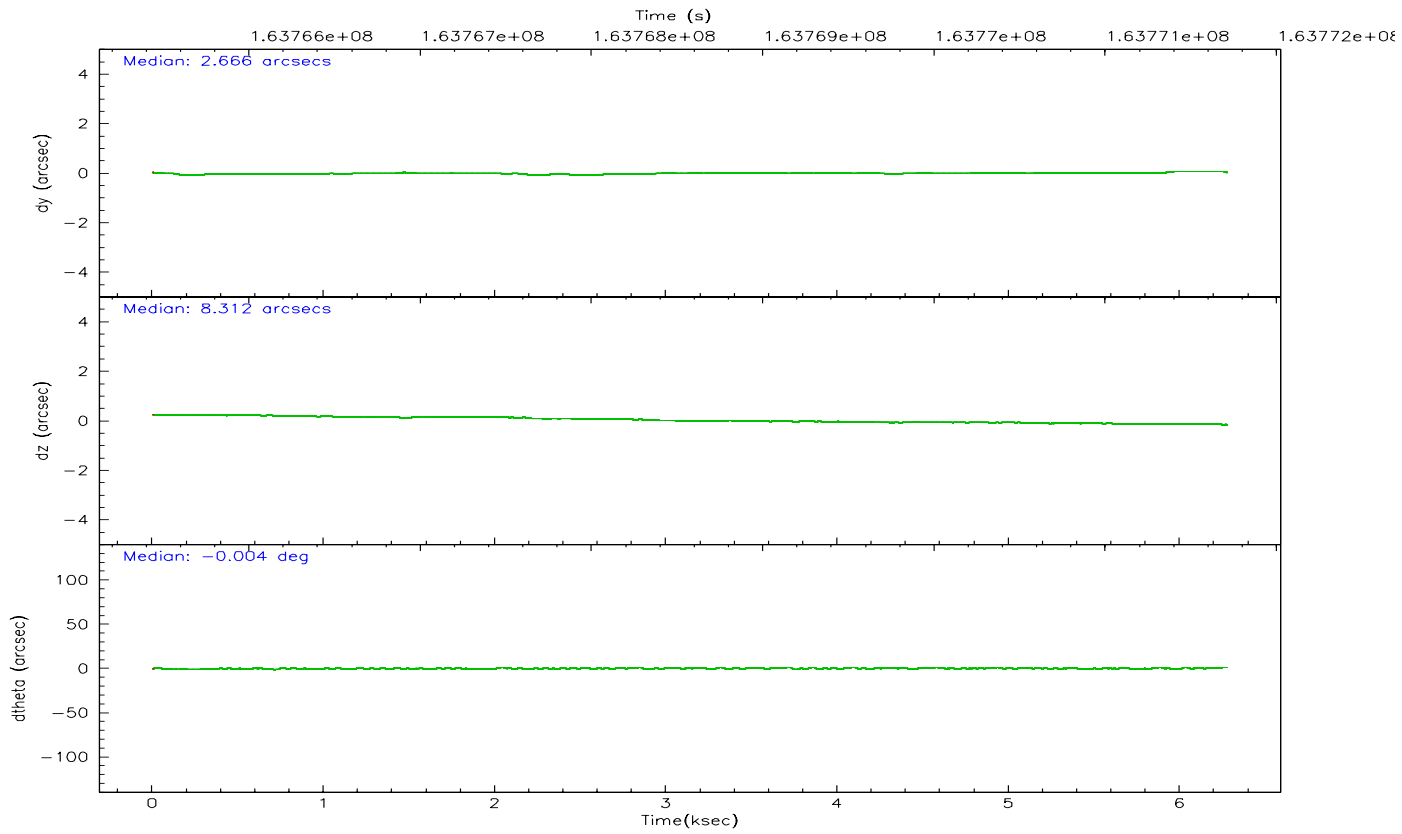
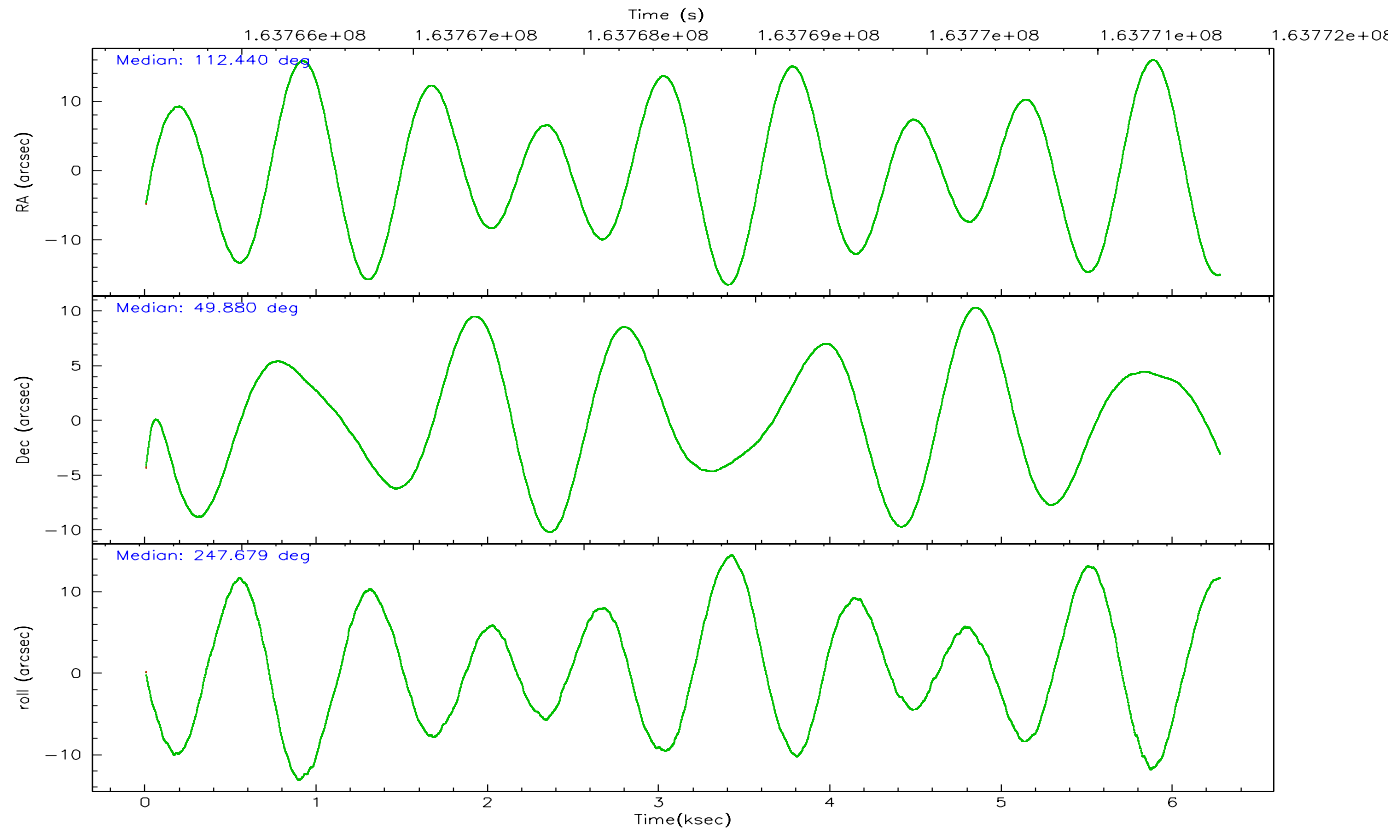
	ccd 2	ccd 3	ccd 5	ccd 6	ccd 7	ccd 8
grade 0 events	1039	1058	2148	1053	918	2552
	3%	3%	5%	3%	3%	6%
grade 1 events	14	14	36	14	15	20
	0%	0%	0%	0%	0%	0%
grade 2 events	621	583	5953	625	3231	1887
	1%	2%	16%	2%	11%	4%
grade 3 events	327	305	620	356	834	1039
	1%	1%	1%	1%	2%	2%
grade 4 events	320	352	528	354	811	990
	1%	1%	1%	1%	2%	2%
grade 5 events	860	880	2158	957	2247	1409
	2%	3%	5%	3%	8%	3%
grade 6 events	442	524	9955	557	6994	2321
	1%	1%	26%	1%	25%	6%
grade 7 events	27931	24327	15723	25897	12752	27735
	88%	86%	42%	86%	45%	73%

2.2 Compared Parameters

Parameter	Planned	Actual	Parameter	Planned	Actual
Instrument	ACIS	ACIS	Obspar format version number	6	6
Detector	ACIS-235678	ACIS-235678	Obspar file type	PREDICTED	ACTUAL
Grating	NONE	NONE	Obspar update status	NONE	UPDATED
Data mode	VFAINT	VFAINT	On-chip summing requested	N	N
Observation mode	POINTING	POINTING	Subarray requested	NONE	NONE
Pointing RA	112.434067	112.4403519359208	Alternating exposures requested	N	N
Pointing Dec	49.906856	49.8798926428545	Primary exposure time	0.000000	3.2
Pointing Roll	247.532630	247.6844585955321			
SIM focus pos (mm)	-0.684267	-0.6828225247311905			
SIM defocus (mm)	0	0.001444936568705701			
SIM translation stage pos (mm)	-190.132523	-190.1425803651734			
SIM translation stage offset (mm)	0	0.01005778216563158			
Observation start time	163765720.184000	163764712.69392			
Observation start date	2003-03-11T10:27:36	2003-03-11T10:11:52			
Observation end time	163771720.184000	163772465.28175			
Observation end date	2003-03-11T12:07:36	2003-03-11T12:21:05			
Read mode	TIMED	TIMED			

2.3 Aspect



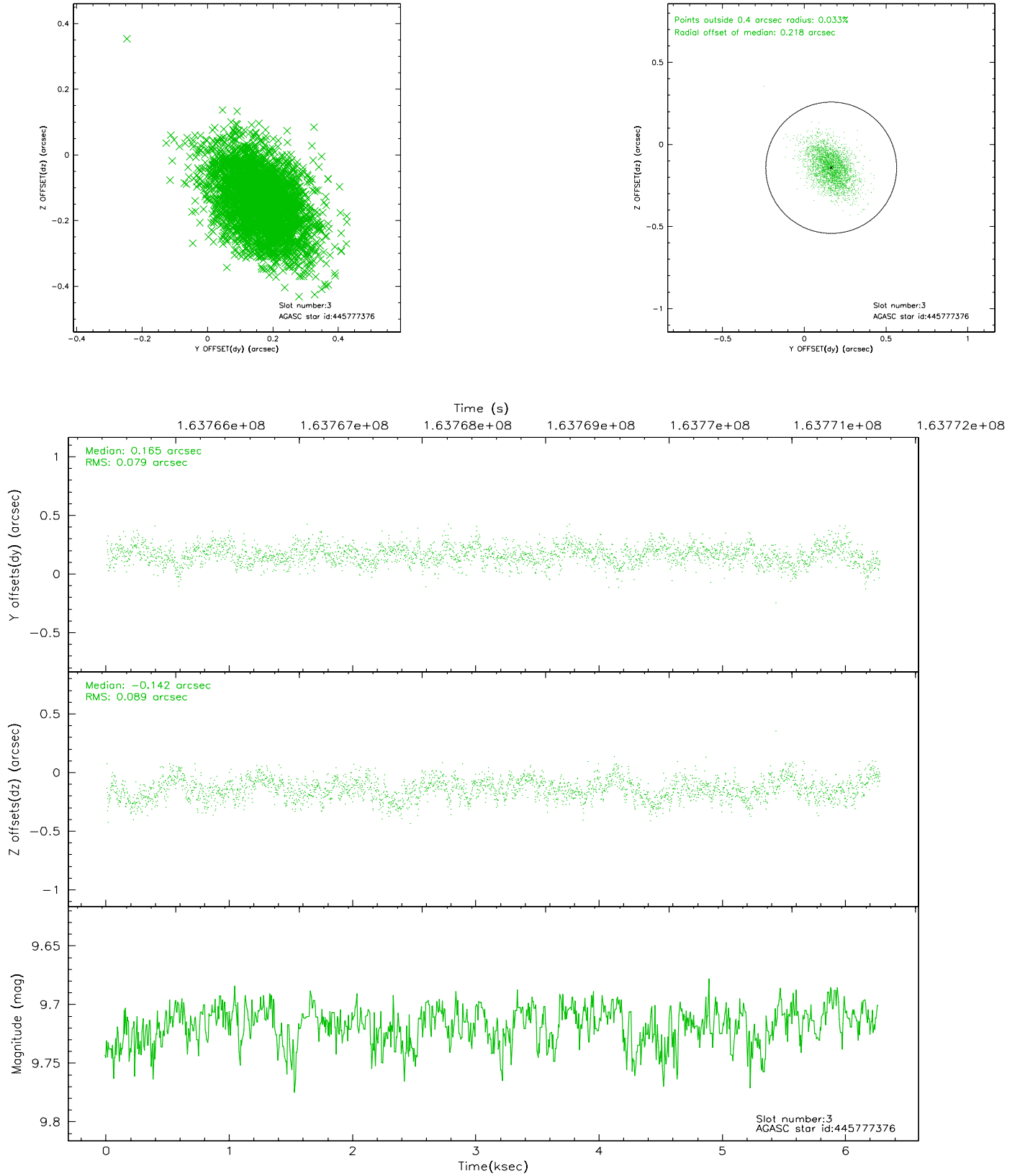


Slot Statistics

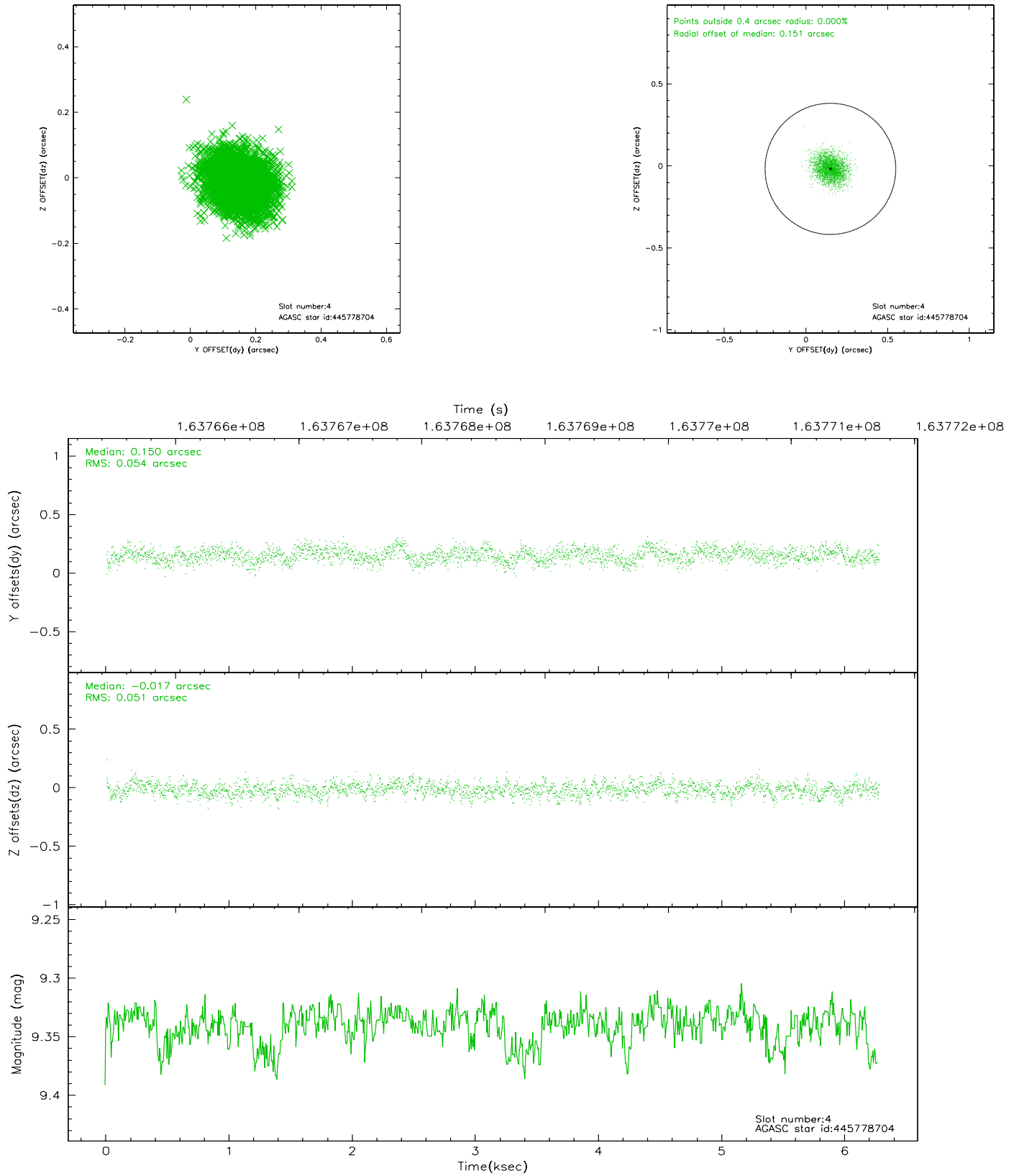
slot	status	id	mag	n_pts	med_dy	med_dz	dr1	dr2	ra	dec	mean_y	mean_z
0	FID	ACIS-S-2	7.11	1531	-0.011	0.010	0.007	0.011	0.000000	0.000000	-755.31	-1729.49
1	FID	ACIS-S-4	7.20	1531	-0.051	0.003	0.005	0.009	0.000000	0.000000	2157.51	178.01
2	FID	ACIS-S-5	7.24	1531	0.031	-0.004	0.006	0.010	0.000000	0.000000	-1806.90	172.76
3	GUIDE	445777376	9.72	3060	0.165	-0.142	0.125	0.211	111.422184	49.500134	2242.96	-1632.71
4	GUIDE	445778704	9.34	3058	0.150	-0.017	0.080	0.127	111.950387	49.446617	1961.23	-414.75
5	GUIDE	447217776	9.45	3061	-0.083	0.093	0.085	0.134	113.360537	50.161746	-1676.30	1618.70
6	GUIDE	445775944	9.73	3060	-0.136	-0.026	0.111	0.176	112.003381	50.607375	-1957.51	-1873.89
7	GUIDE	446831360	9.28	3059	-0.087	0.090	0.132	0.214	113.165215	49.501450	687.00	2133.69

2.4 Star Slots

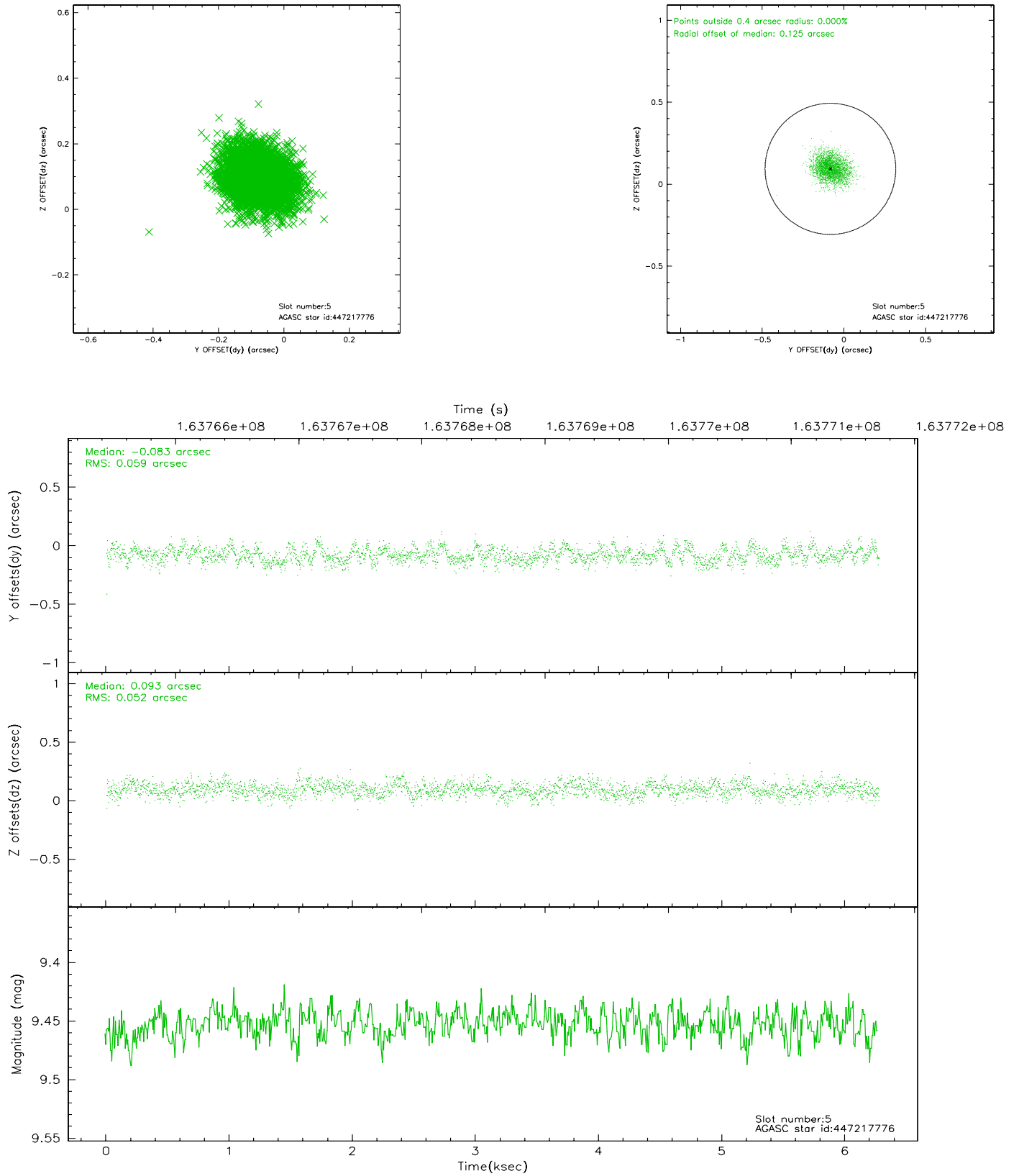
2.4.1 Slot 3



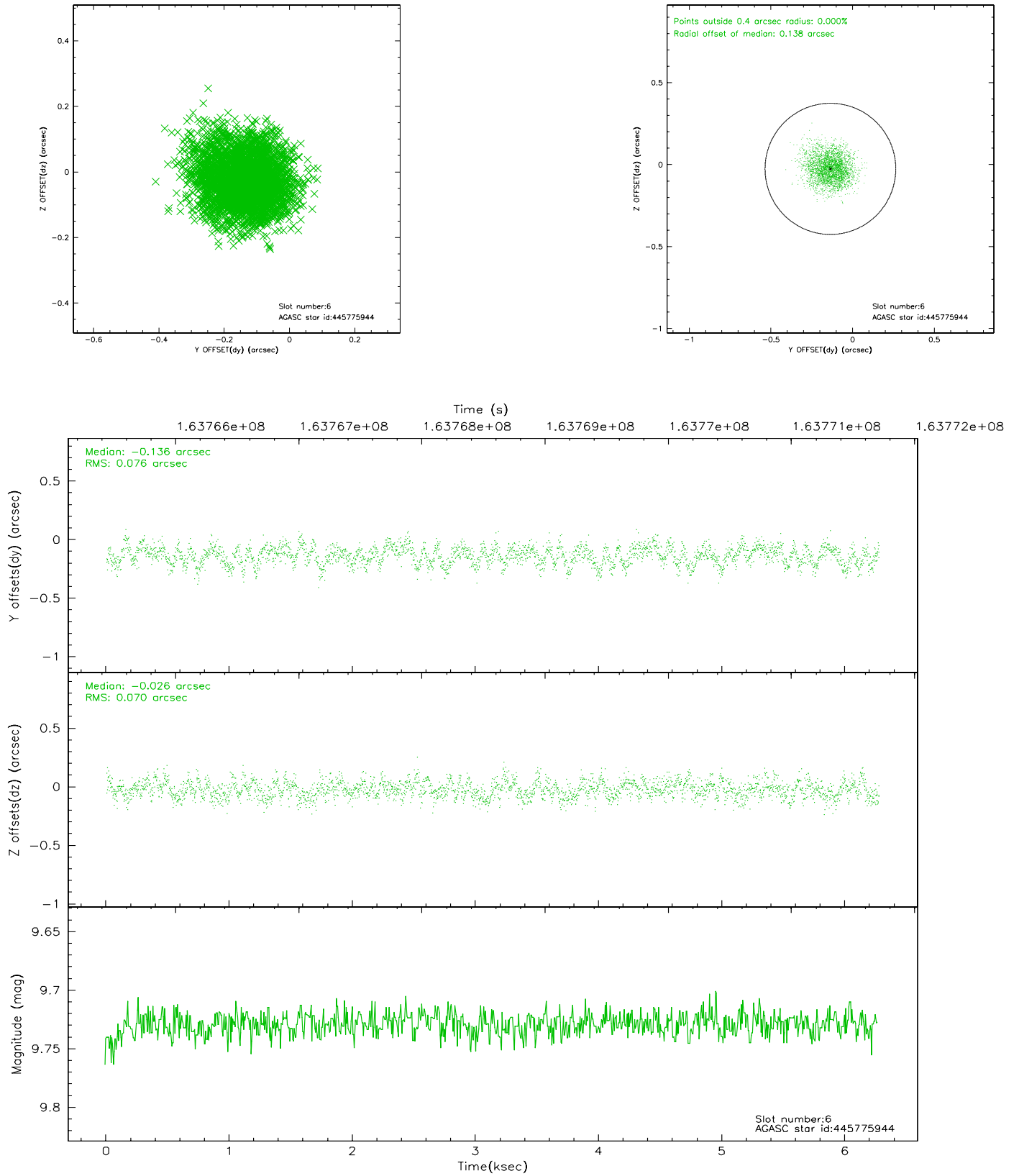
2.4.2 Slot 4



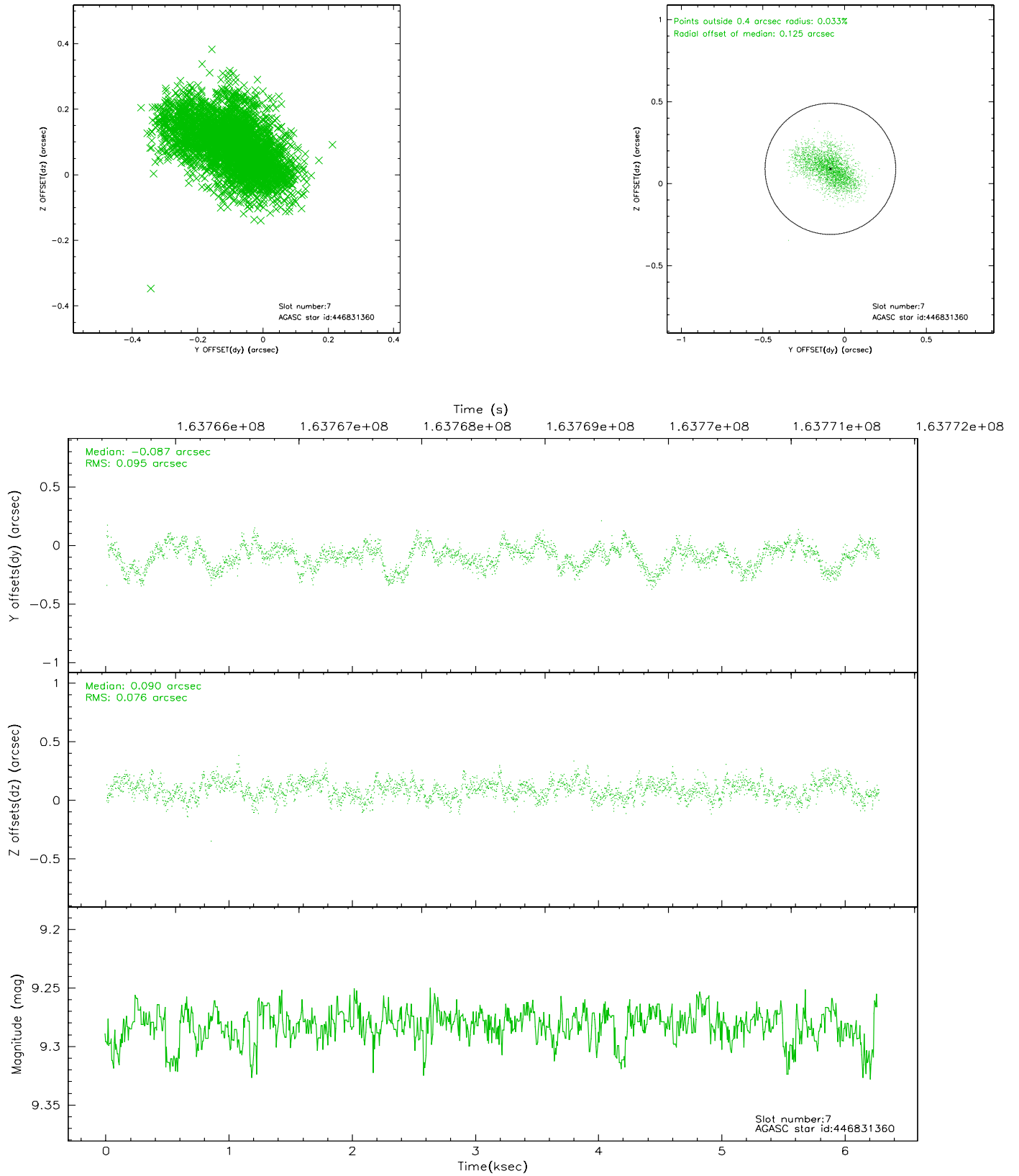
2.4.3 Slot 5



2.4.4 Slot 6

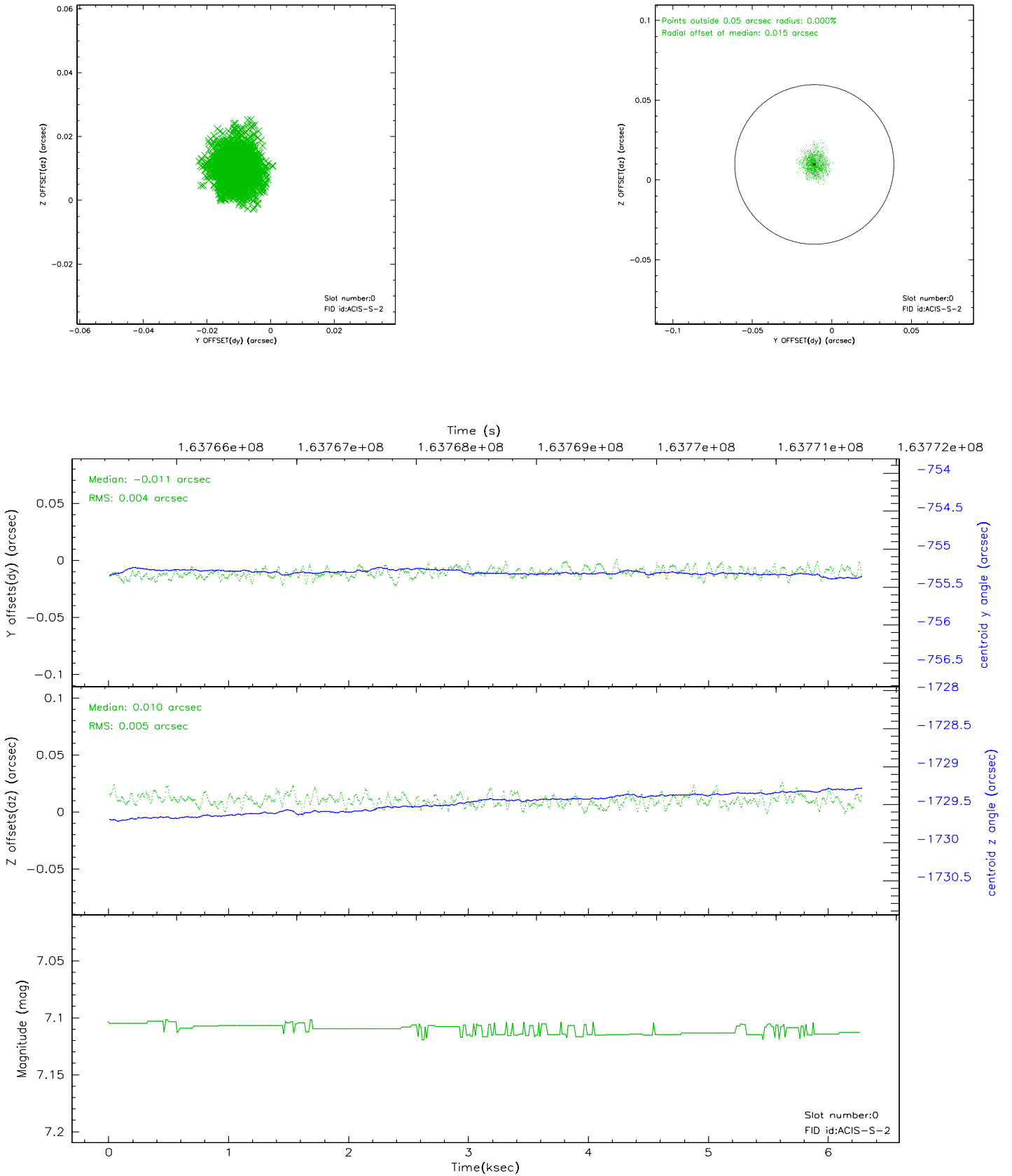


2.4.5 Slot 7

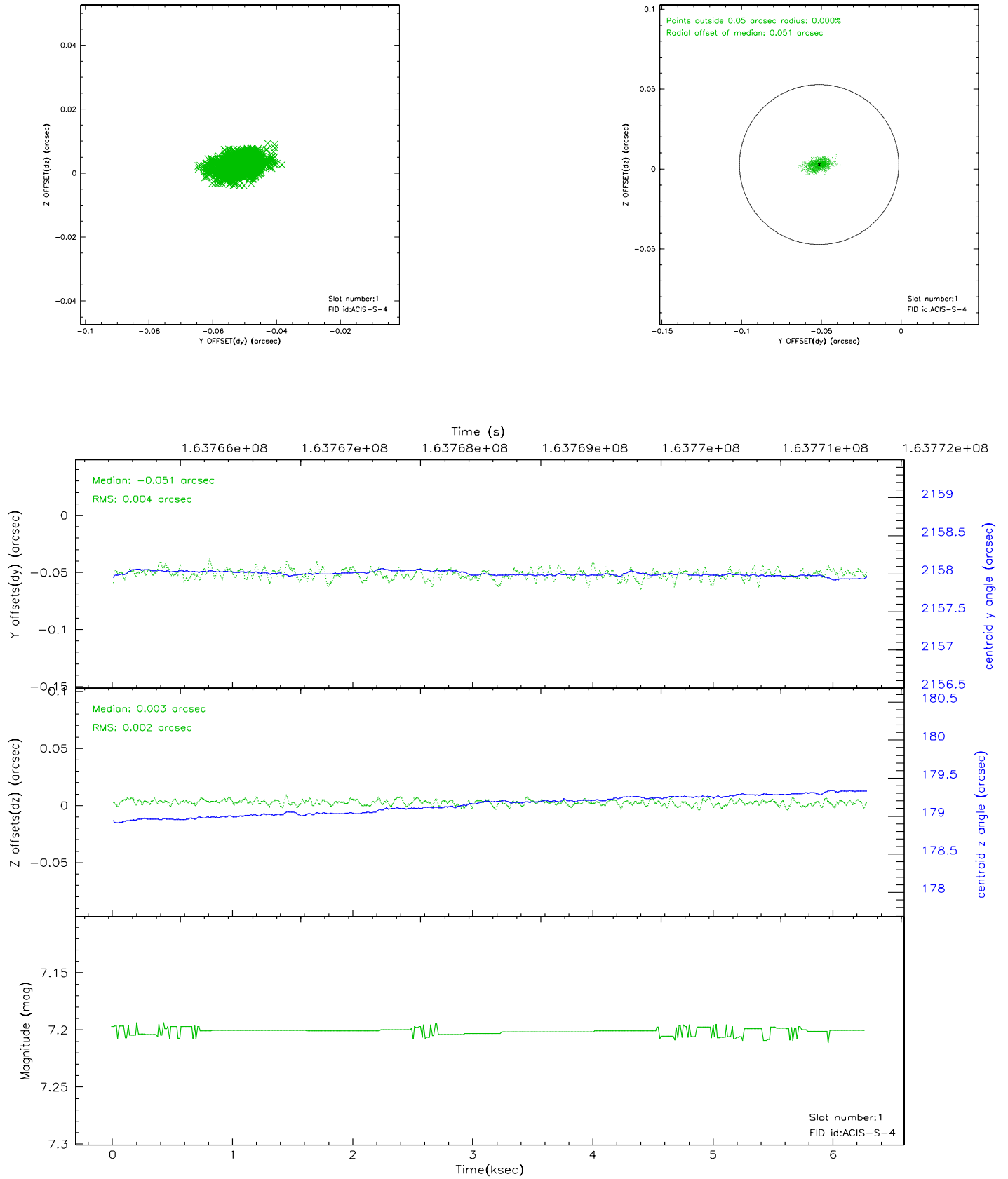


2.5 FID Slots

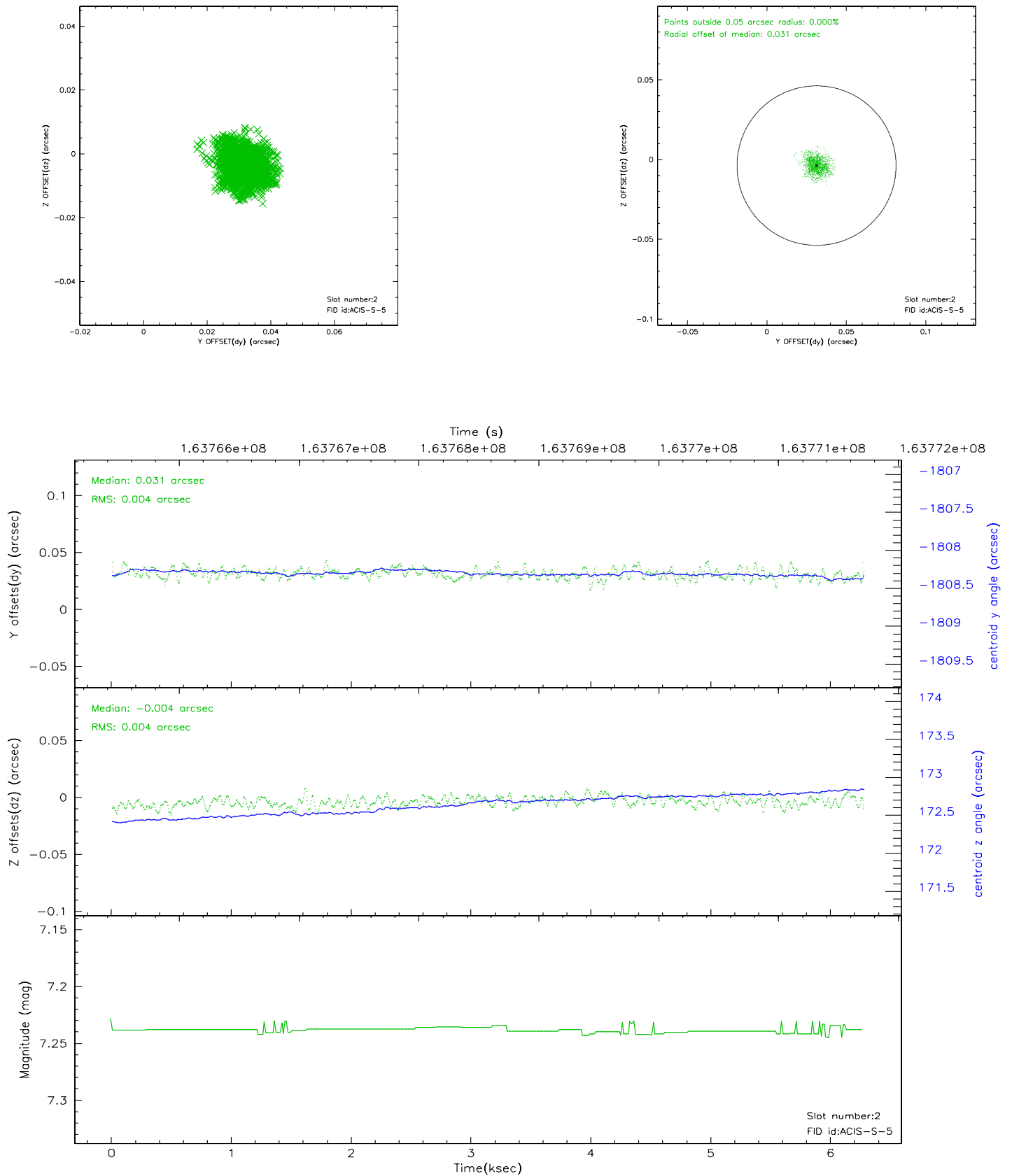
2.5.1 Slot 0



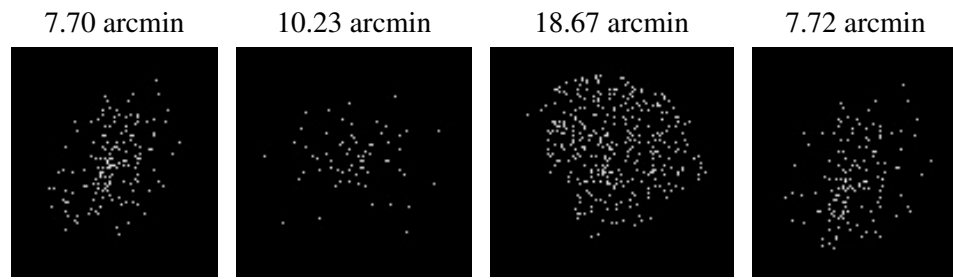
2.5.2 Slot 1



2.5.3 Slot 2



3 Point Sources



A Summary

A.1 Status

V&V Scientist	Beth Sundheim
V&V Date (YYYY-MM-DD)	2006.07.23
V&V Edition	1
V&V Disposition and Status	OK
V&V Charge Time	5.965

A.2 Comments